

Gawron Turgeon ARCHITECTS
 29 Black Point Road
 Scarborough, Maine 04074
 www.gawronturgeon.com
 207-883-6307 ext. 207-883-6361 fax

MAINE DEA
 312 CANCO ROAD
 PORTLAND, MAINE

REVISIONS

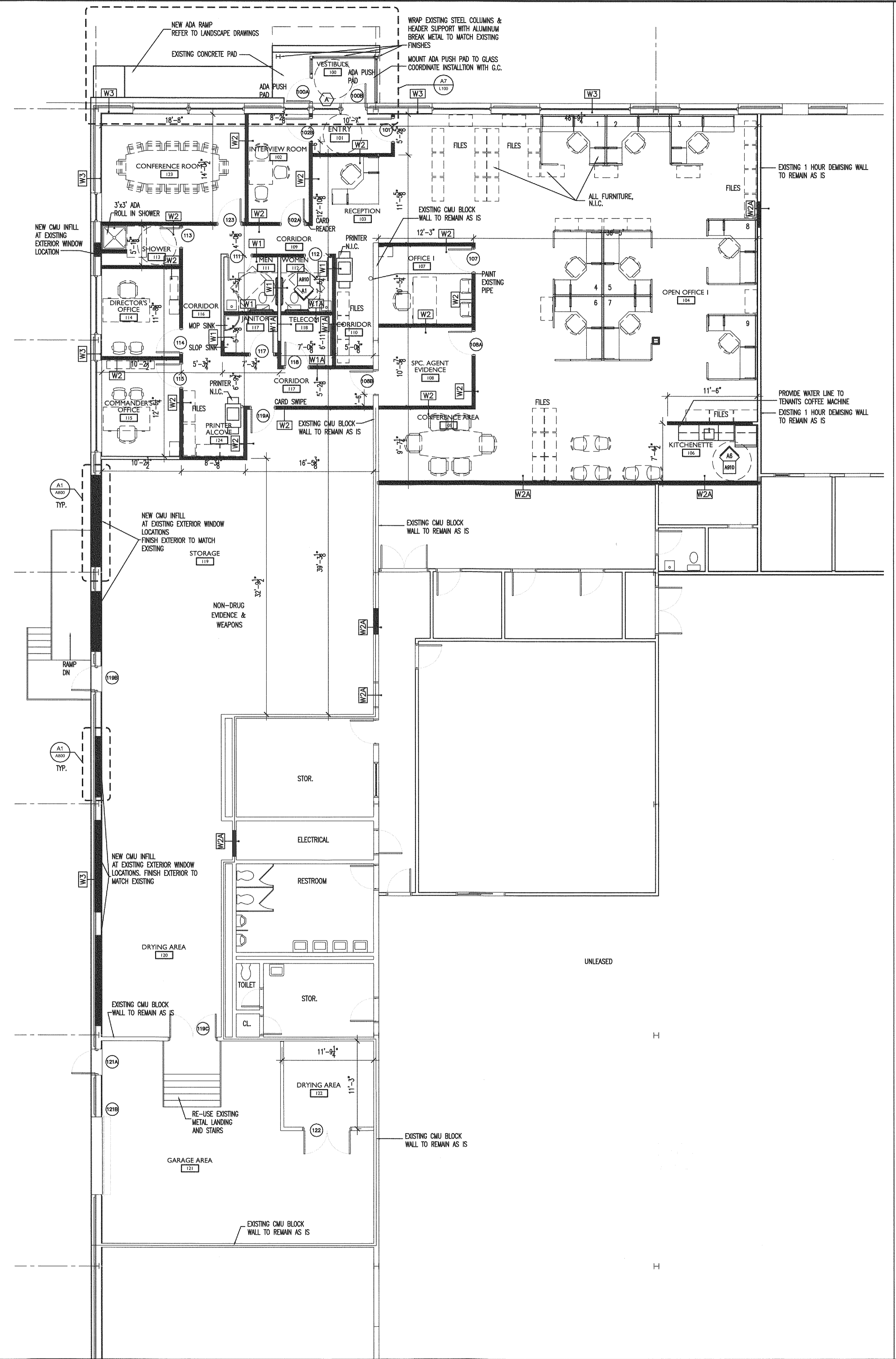
#	DATE	DESCRIPTION

DATE:	05-07-13
PROJECT #:	040113
DRAWN BY:	DLP
CHECKED BY:	SWG
DRAWING SCALE:	AS NOTED

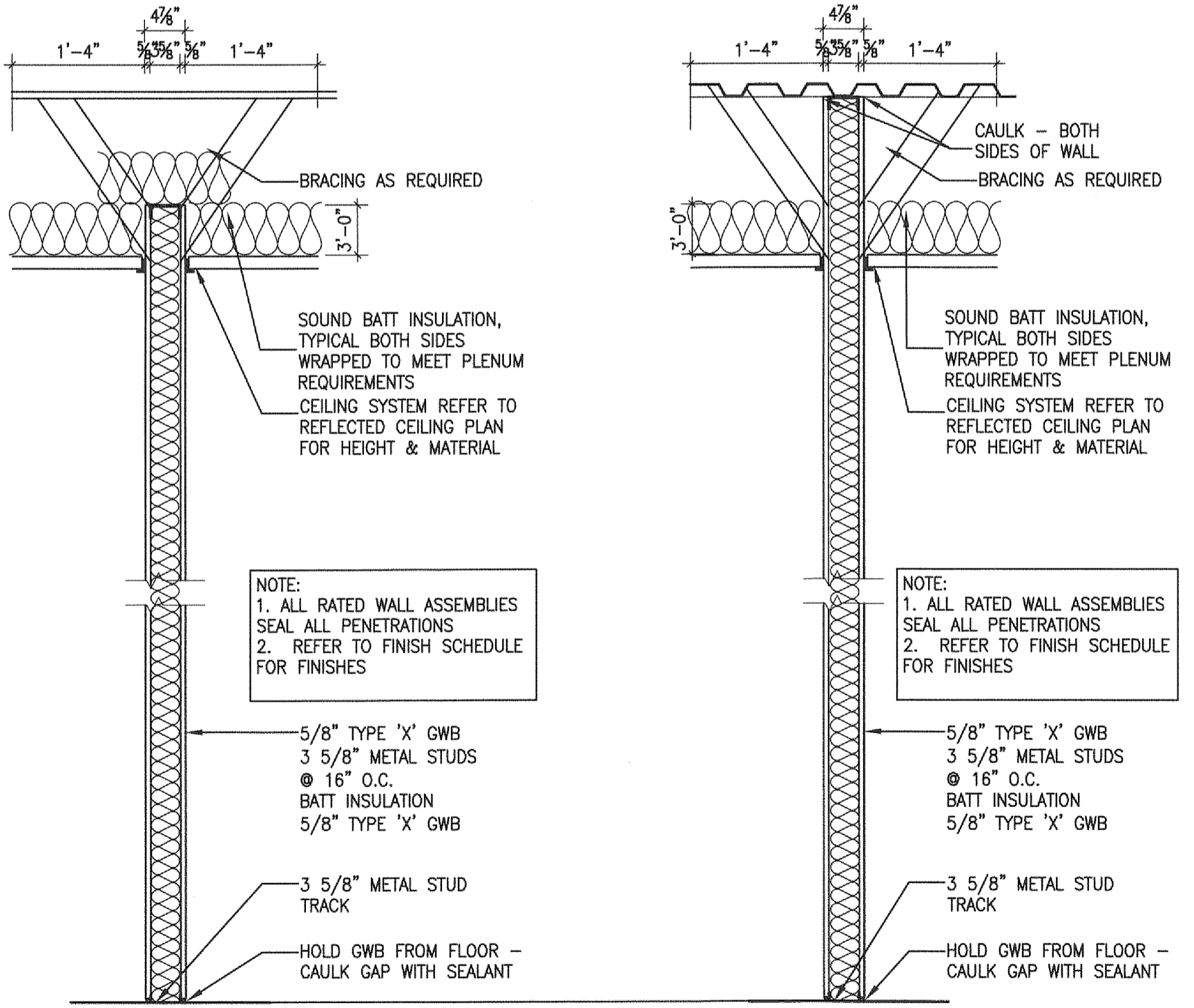
SHEET TITLE
 PARTIAL FLOOR PLAN
 PARTITION TYPES
 LEGEND/NOTES

A101

© COPYRIGHT 1985-2008
 REPRODUCTION OR USE OF THIS
 DOCUMENT WITHOUT WRITTEN
 PERMISSION OF GAWRON TURGEON
 ARCHITECTS IS PROHIBITED



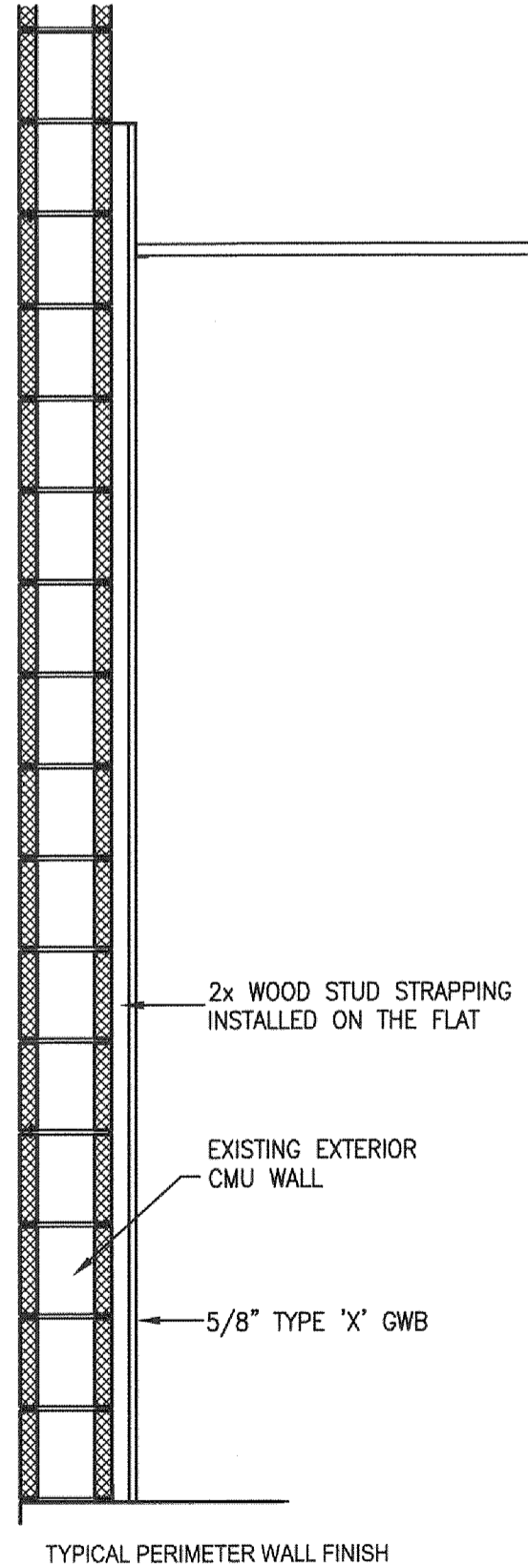
NOTE: PROVIDE NEW MOISTURE RESISTANT G.W.B. AT NEW BATHROOMS AND SHOWER ROOMS



W 1 WALL DETAIL (NON RATED)
 SCALE 3/4"=1'-0"

W 2 WALL DETAIL (NON RATED)
 SCALE 3/4"=1'-0"

W2A WALL DETAIL (1 HR. RATED)
 SCALE 3/4"=1'-0"



W 3 WALL DETAIL
 SCALE 3/4"=1'-0"

A9 PARTIAL FLOOR PLAN

1/8"=1'-0"

- NOTES:**
- G.C. TO INSTALL A 4'x8' PLYWOOD BACKERBOARD PAINTED BLACK AT TELECOM 118.
 - INSTALL THE FOLLOWING TOILET ACCESSORIES IN THE RESTROOMS.
 MENS:
 (1) 36" GRAB BAR - STAINLESS STEEL
 (1) 42" GRAB BAR - STAINLESS STEEL
 (1) PAPER TOWEL DISPENSER
 (1) LIQUID SOAP DISPENSER
 (1) TOILET TISSUE DISPENSER
 (1) 24x36 BEVELED EDGE MIRROR
 WOMENS:
 (1) 36" GRAB BAR - STAINLESS STEEL
 (1) 42" GRAB BAR - STAINLESS STEEL
 (1) PAPER TOWEL DISPENSER
 (1) LIQUID SOAP DISPENSER
 (1) TOILET TISSUE DISPENSER
 (1) 24x36 BEVELED EDGE MIRROR
 (1) SANITARY NAPKIN DISPENSER.
 G.C. TO INSTALL BLOCKING BEHIND ALL ACCESSORIES.
 - G.C. TO PROVIDE BLOCKING FOR ALL CABINETS.
 - G.C. TO INSTALL PERIMETER ROLLER SHADES AT ALL WINDOWS.
 MANUFACTURER: MANUAL FLEX SHADE - DRAPER. COLOR: OYSTER/BEIGE 3% OPENNESS FACTOR WITH ACCESSORY VALANCE AND ROLLER CHAIN.
 - ALL FURNITURE IS N.I.C. GENERAL CONTRACTOR TO COORDINATE POWER AND DATA ONLY. REFER TO STATE OF MAINE SPECIFICATIONS.
 - JANITOR 117: INSTALL A MOP AND BROOM HOLDER WITH UTILITY SHELF.
 - INSTALL THE FOLLOWING APPLIANCES IN KITCHENETTE 106:
 REFRIG. WHIRLPOOL GB2FDXW0
 MICROWAVE WHIRLPOOL WMC30516AW
 - ALL EXISTING CMU BLOCK TO BE PATCHED AS NECESSARY AND PAINTED.
 - TELECOM 118 ROOM TO HAVE A SPLIT SYSTEM A.C. WALL UNIT INSTALLED FOR COOLING.
 - WRAP ALL WINDOW HEAD, JAMB AND SILL W/1x WOOD - PTD.

LEGEND

- NEW WALL
- EXISTING WALL TO REMAIN

A18 LEGEND/NOTES

1/8"=1'-0"

A1 PARTITION TYPES

3/4"=1'-0"

13/2013/0011 - MAINE DEA - ARCHITECTURE & ENGINEERING CONSULTANTS, INC. 13/2013/0011 13/2013/0011