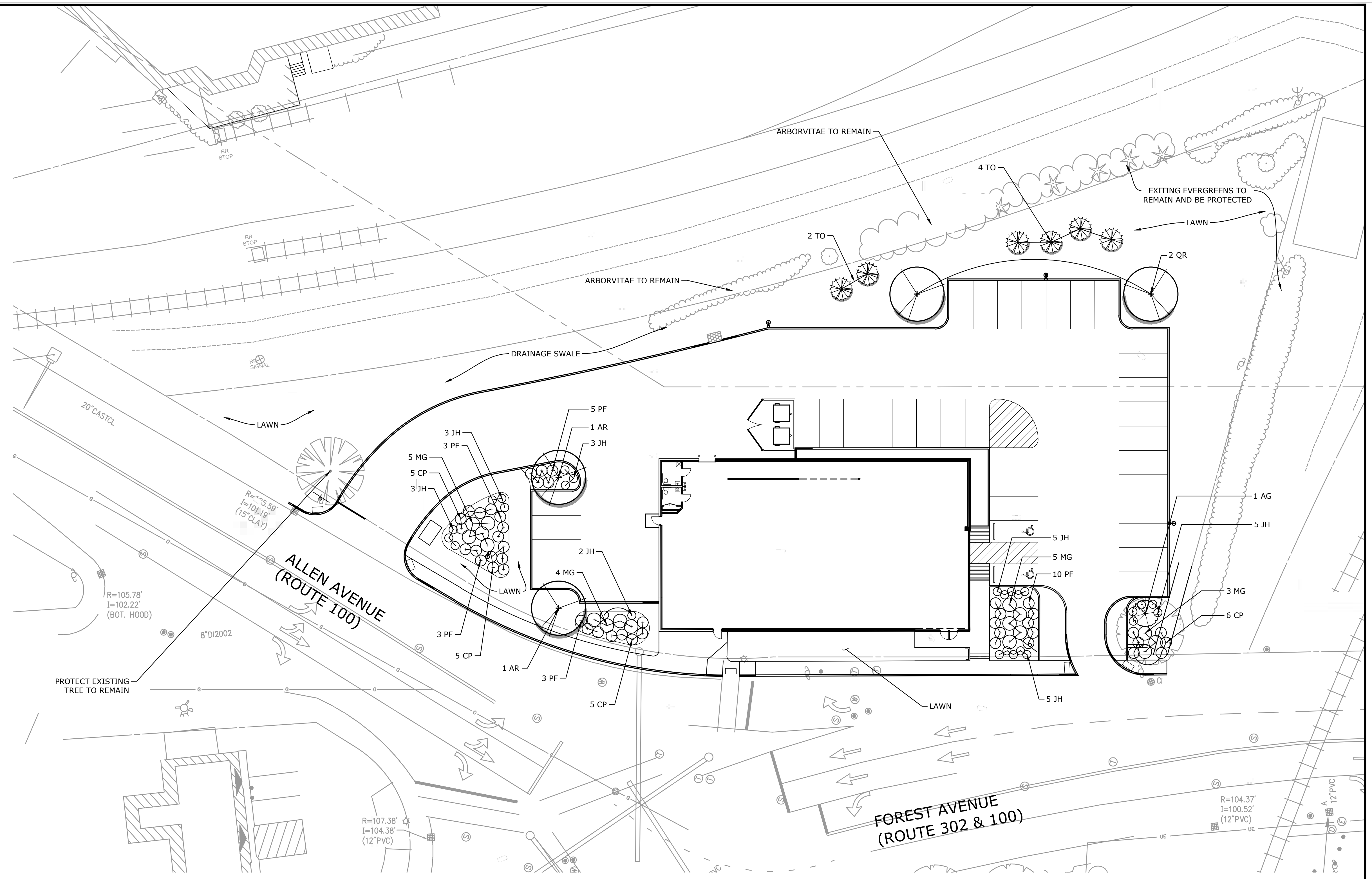
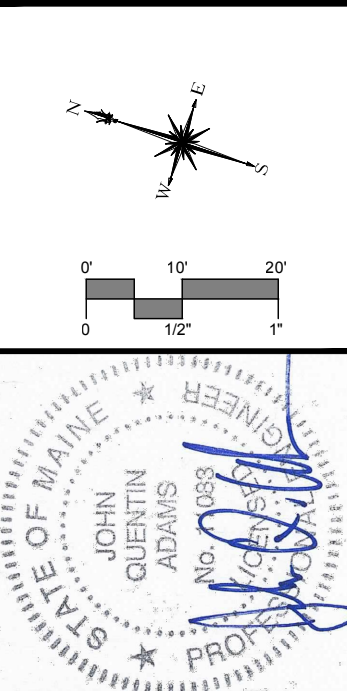


PLANTING NOTES

1. THE CONTRACTOR SHALL VERIFY THE LOCATION OF ALL UNDERGROUND UTILITIES PRIOR TO EXCAVATING PLANT PITS.
2. THE LANDSCAPE CONTRACTOR SHALL PROVIDE A 6" MINIMUM DEPTH OF TOPSOIL FOR ALL LAWN AREAS. WATER AS NECESSARY TO ESTABLISH TURF.
3. ALL PLANTING BEDS SHALL HAVE 12" MINIMUM DEPTH OF TOPSOIL.
4. THE LANDSCAPE CONTRACTOR SHALL PROVIDE A 4" MIN. DEPTH OF SHREDDED MULCH OVER ALL PLANTING BEDS AND TREE PLANTINGS. NO DYED MULCH.
5. ALL PLANT MATERIAL IS SUBJECT TO INSPECTION AND APPROVAL BY THE LANDSCAPE ARCHITECT PRIOR TO AND AFTER PLANTING.
6. PLANT SPECIES MAY BE ADJUSTED BASED ON AVAILABILITY AT TIME OF PLANTING. ALL PLANT MATERIAL SUBSTITUTIONS ARE SUBJECT TO REVIEW AND APPROVAL BY THE LANDSCAPE ARCHITECT.
7. ALL PLANT MATERIALS SHALL CARRY A FULL GUARANTEE FOR A PERIOD OF ONE YEAR FROM THE DATE OF ACCEPTANCE, TO INCLUDE PROMPT TREATMENT OR REMOVAL AND REPLACEMENT OF ANY PLANTS FOUND TO BE IN AN UNHEALTHY CONDITION BY THE LANDSCAPE ARCHITECT. ALL REPLACEMENTS SHALL BE OF THE SAME KIND AND SIZE OF PLANTS SPECIFIED IN THE PLANT LIST.
8. MAINTENANCE SHALL BEGIN IMMEDIATELY AFTER PLANTING AND SHALL CONTINUE UNTIL ACCEPTANCE BY THE LANDSCAPE ARCHITECT. MAINTENANCE SHALL INCLUDE WATERING, MULCHING, TIGHTENING & REPLACING OF GUYS, REPLACEMENT OF SICK OR DEAD PLANTS, RESETTling PLANTS TO PROPER GRADE OR UPRIGHT (PLUMB) POSITION, RESTORATION OF SAUCERS, AND ALL OTHER CARE NEEDED FOR PROPER GROWTH OF THE PLANTS.
9. WHERE A SIZE RANGE IS SPECIFIED AT LEAST 50% OF PLANTS PROVIDED SHALL BE OF THE LARGER SIZE.
10. CONTRACTOR TO REMOVE TREE STAKES AFTER ONE GROWING SEASON.
11. QUANTITY AND PLACEMENT OF PLANTS ARE APPROXIMATE AND ARE SUBJECT TO FINAL PLACEMENT IN THE FIELD BY THE DIRECTING LANDSCAPE ARCHITECT.



PLANT LIST						
TREES	QTY	KEY	BOTANICAL	COMMON	SIZE	COMMENTS
	2	AR	Acer rubrum 'Red Sunset'	Red Maple	3.0"-3.5" CAL	B&B
	1	AG	Amelanchier x grandiflora 'Robin Hill'	Robin Hill Serviceberry	8'-10' HT.	B&B, Multi-stem
	2	QR	Quercus rubra	Red Oak	3.0"-3.5" CAL	B&B
	6	TO	Thuja occidentalis 'Nigra'	Dark American Arborvitae	7'-8' ht	B&B
SHRUBS	QTY	KEY	BOTANICAL	COMMON	SIZE	COMMENTS
	21	CP	Comptonia peregrina	Sweet Fern	#2 CONT.	FULL & DENSE
	26	JH	Juniperus horizontalis	Creeping Juniper	#2 CONT.	FULL & DENSE
	17	MG	Myrica gale	Sweet Gale	#5 CONT.	FULL & DENSE
	24	PF	Potentilla fruticosa 'Dakota Sunspot'	Bush Cinquefoil	#3 CONT.	FULL & DENSE



MILONE & MACBROOM
 121 Middle Street
 Suite 201
 Portland, Maine 04101
 (207) 541-5644 Fax (207) 541-5648
 www.miloneandmacbroom.com

DESCRIPTION	DATE	BY

LANDSCAPE PLAN
 AUTOZONE STORE NO. 3879
 PORTLAND, MAINE
 FOREST AVE, ALLEN AVE
 PORTLAND, MAINE

KCF	BDK	KCF
DESIGNED	DRAWN	CHECKED
SCALE		
1"=20'		
DATE		
MARCH 16, 2016		
PROJECT NO.		
5464-04		
SHEET NO.		
11 OF 12		

L1.0