



Vanasse Hangen Brustlin, Inc.

Transportation
Land Development
Environmental Services

2 Bedford Farms Drive, Suite 200
Bedford, New Hampshire 03110
603.391.3900 • FAX 603.518.7495

Legend

- ① DRAIN MANHOLE
- ② CATCH BASIN
- ③ SEWER MANHOLE
- ④ ELECTRIC MANHOLE
- ⑤ TELEPHONE MANHOLE
- MANHOLE
- HH - HANDHOLE
- BOLLARD
- WATER GATE
- FIRE HYDRANT
- GAS GATE
- STREET SIGN
- LIGHT POLE
- UTILITY POLE
- GUY POLE
- GUY WIRE
- MONITORING WELL
- WELL

- F.F.E.=45.27' FINISHED FLOOR ELEVATION
- EOP EDGE OF PAVEMENT
- CC CONCRETE CURB
- VGC VERTICAL GRANITE CURB
- SGE SLOPED GRANITE EDGE
- BB BITUMINOUS BERM
- BY BITUMINOUS CURB
- DYL DOUBLE YELLOW LINE
- SWL SINGLE WHITE LINE
- GUARD RAIL-STEEL POST
- GUARD RAIL-WOOD POST
- CLF CHAIN LINK FENCE
- SF STOCKADE FENCE
- DLN DRAINAGE LINE
- S sewer line
- OW overhead wire
- E underground electric
- T telephone line
- G gas line
- W water line
- S stone wall
- T tree line

1	SURVEYED SNOW OBSCURED AREAS	2/22/16	GEJ
No.	Revision	Date	Apprv.

Designed by	Drawn by	Checked by
CAD checked by	Approved by	

Scale 1"=20' Date February 23, 2015

Proposed AutoZone #3879

1201 and 1207 Forest Avenue
Portland, Maine 04103

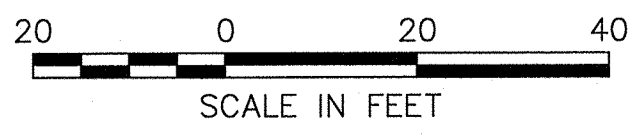
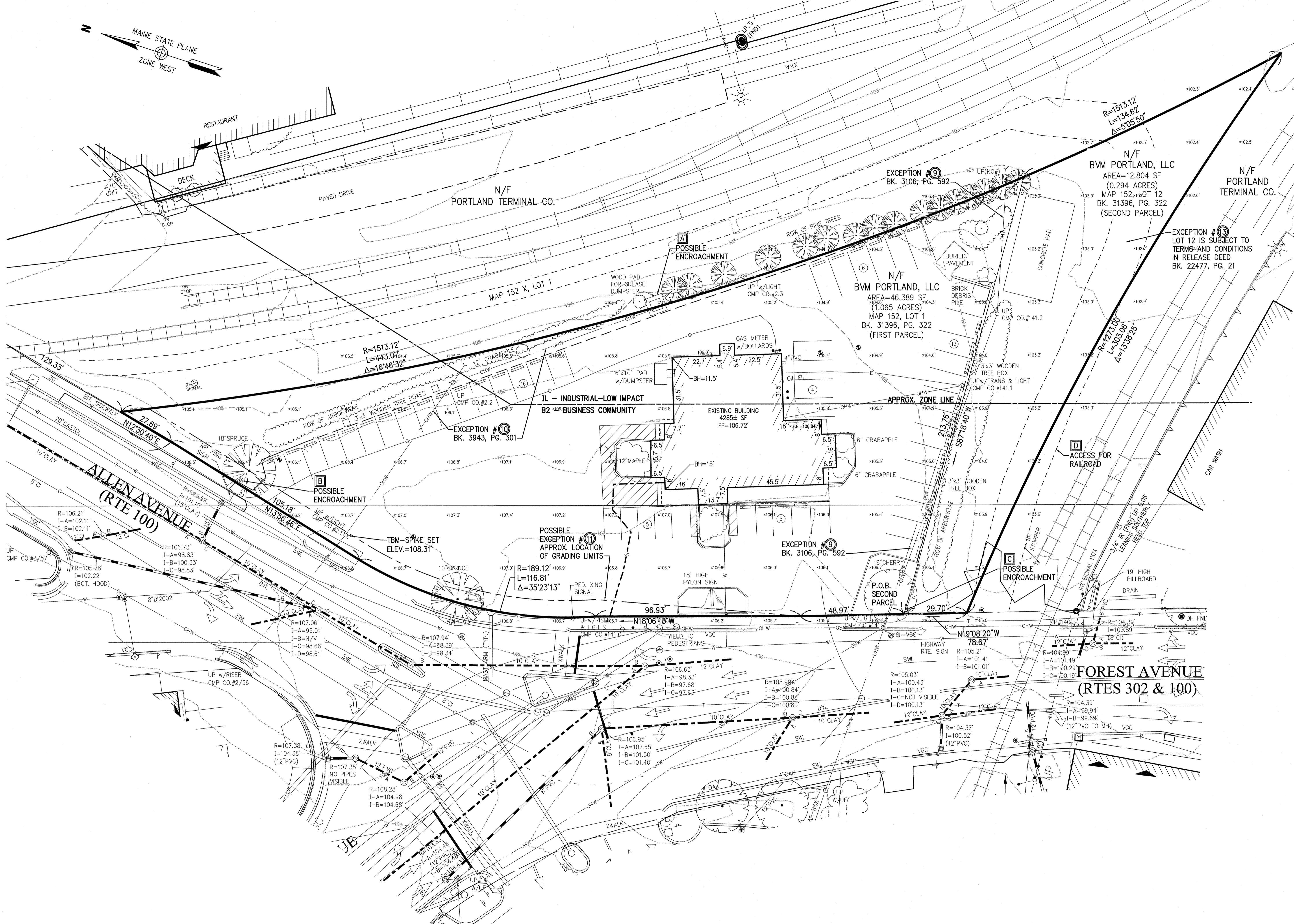
Issued for
ALTA/ACSM
Land Title Survey

Existing Conditions
Plan of Land

Drawing Title

STATE OF MAINE
GLEN E. JOHNSON
2490
PROFESSIONAL
LAND SURVEYOR

Sheet of 1 2
Project Number 52359.00



Sheet Wednesday, March 02, 2016 6:11:17 PM POUERITW Plotted Thursday, March 03, 2016 9:31:17 AM Cuetin, Paul