

**Foundation Plan**  
1/8" = 1'-0"

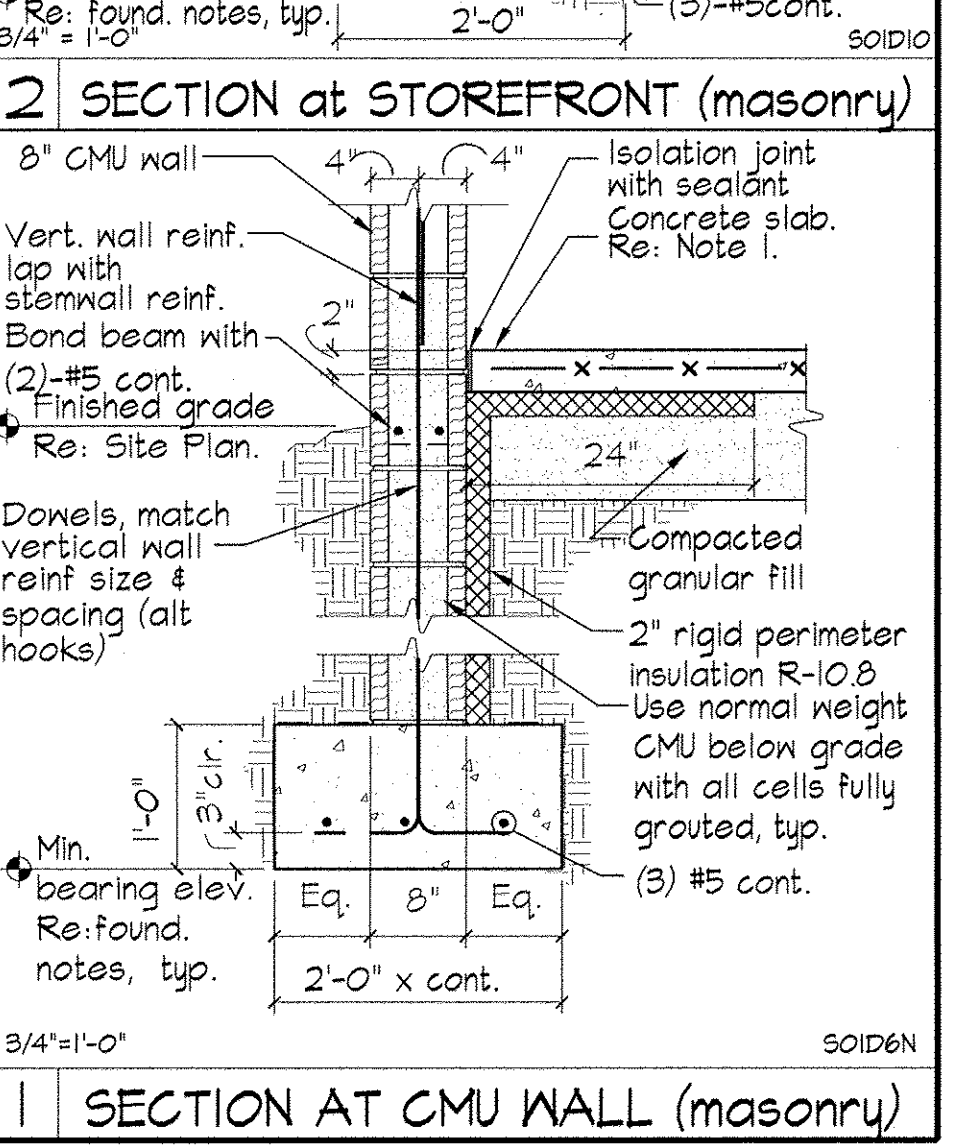
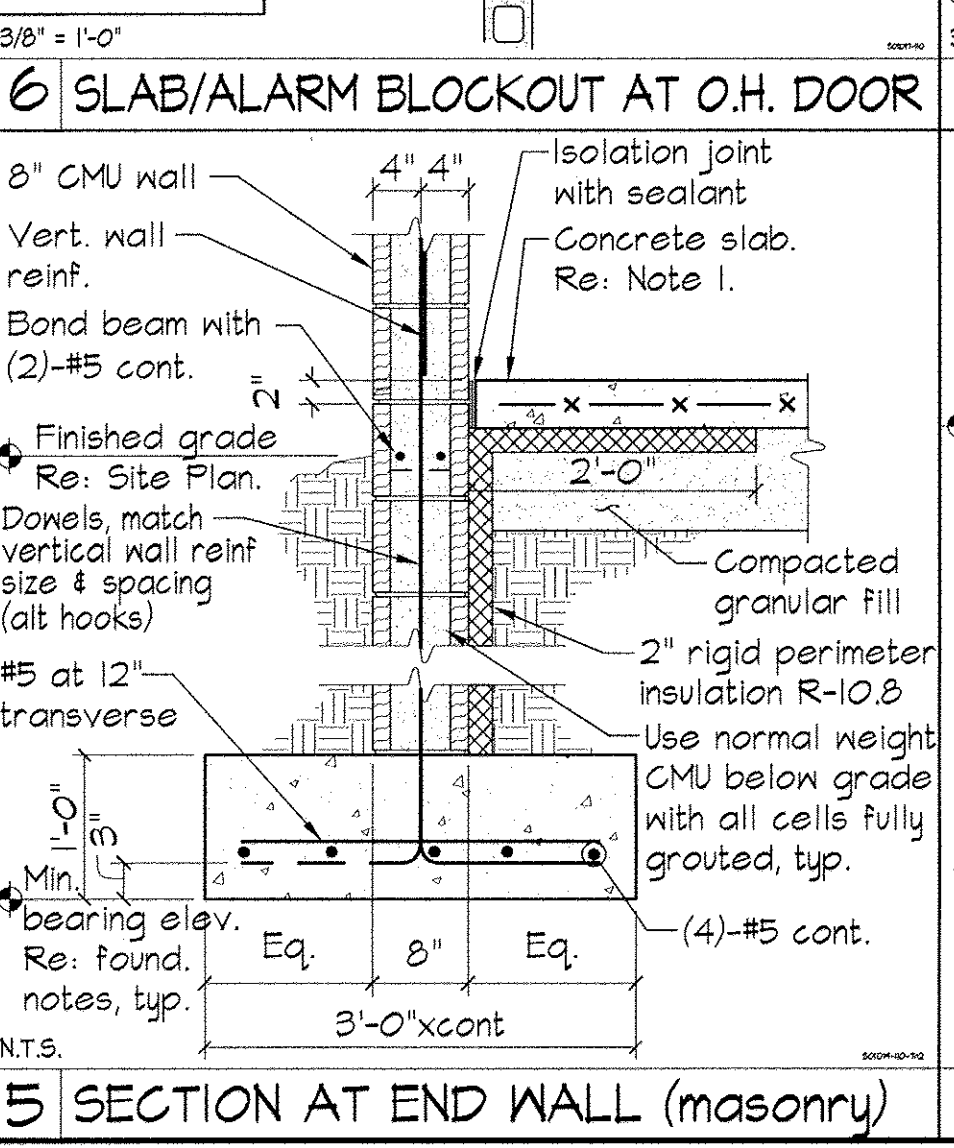
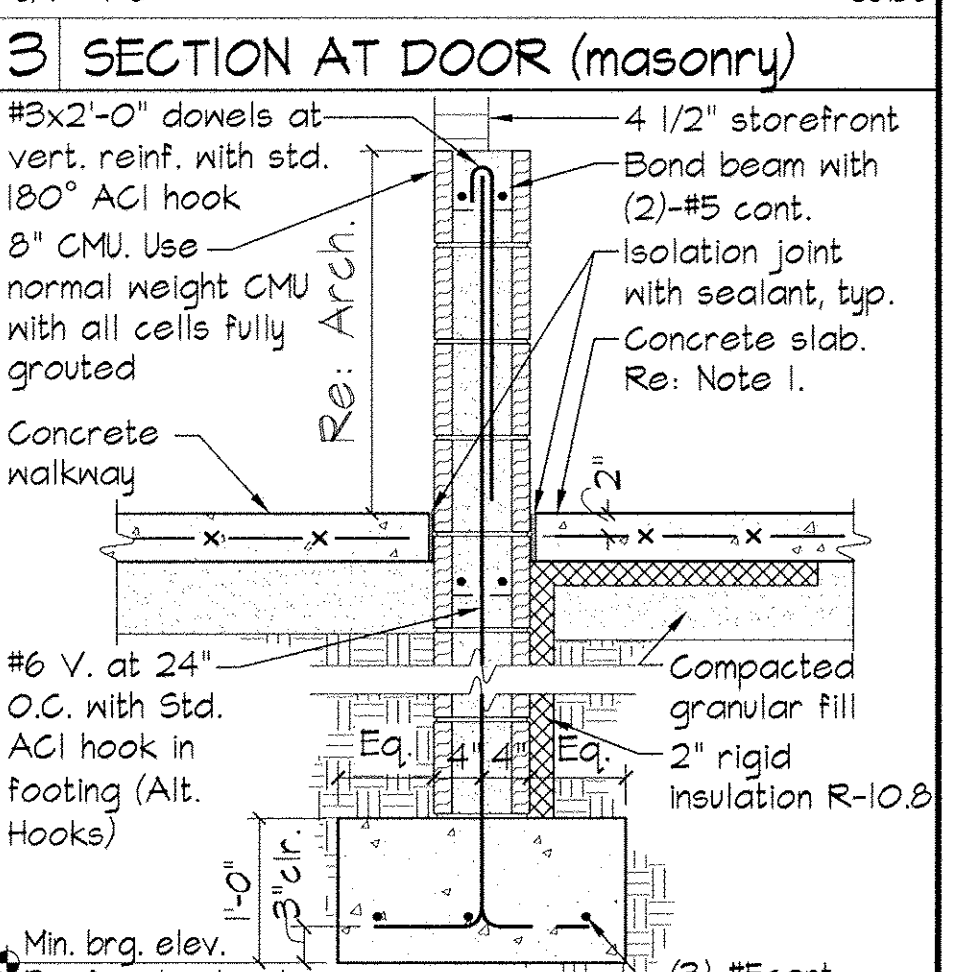
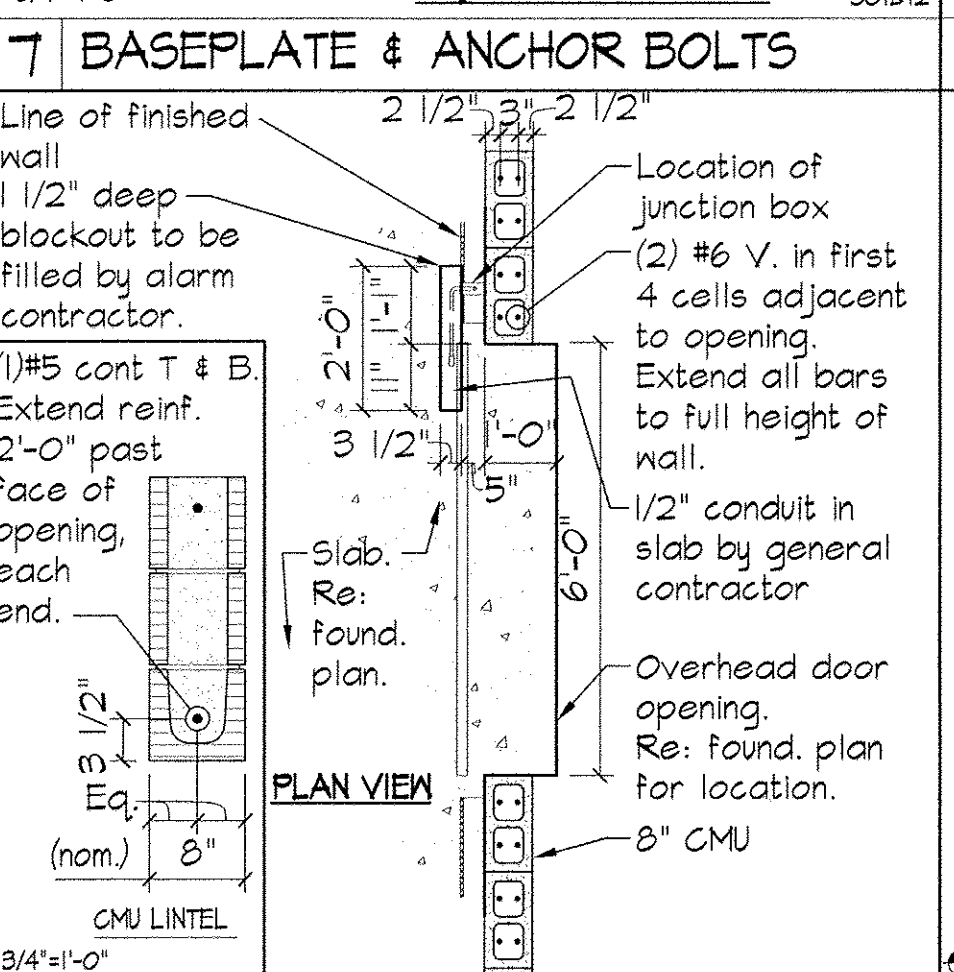
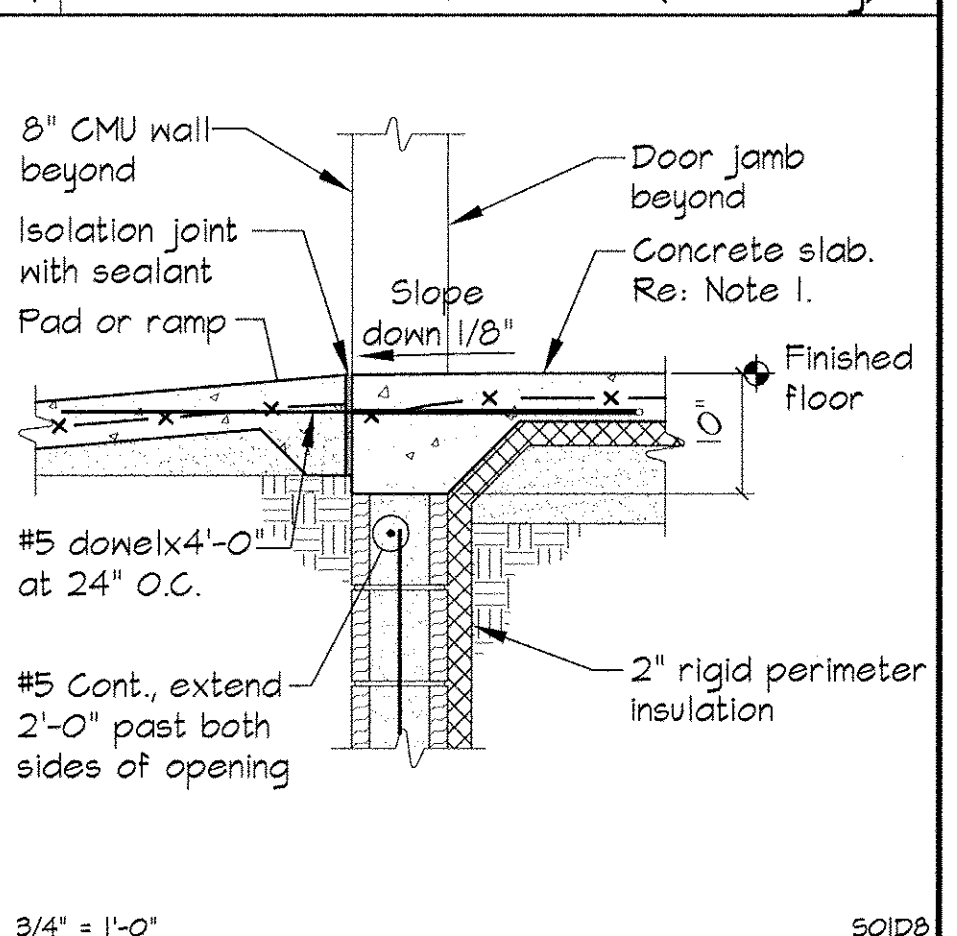
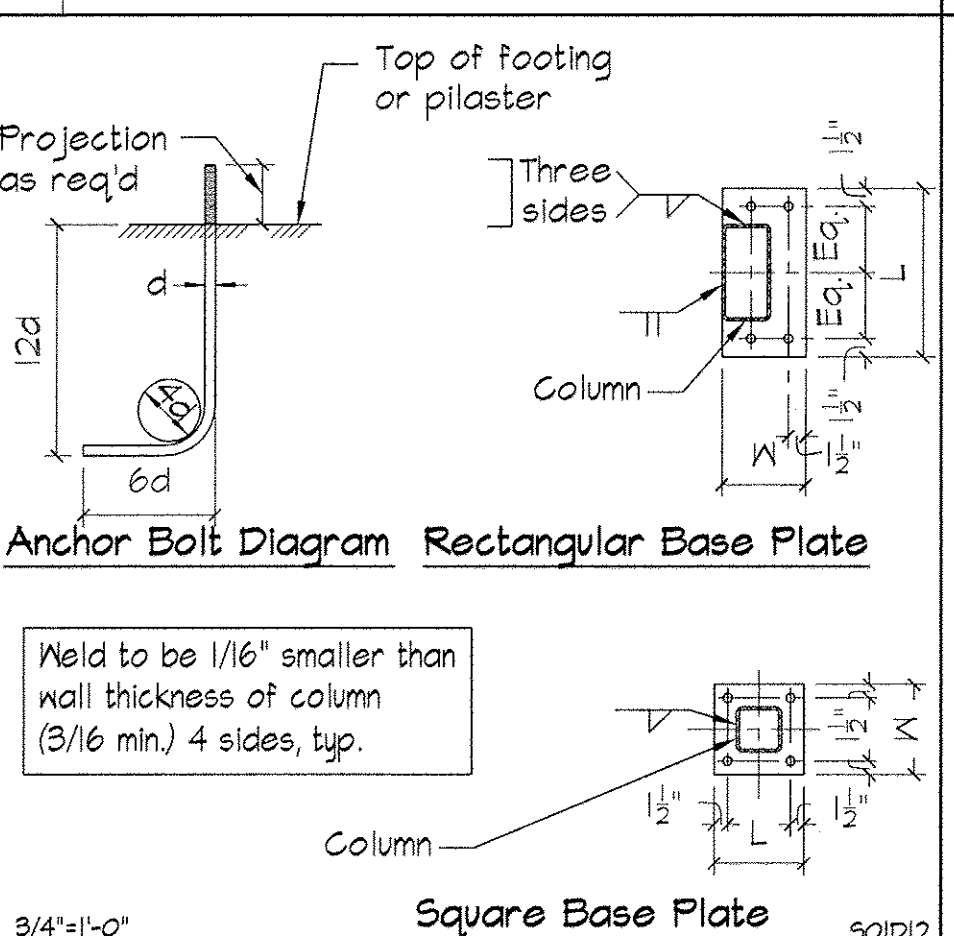
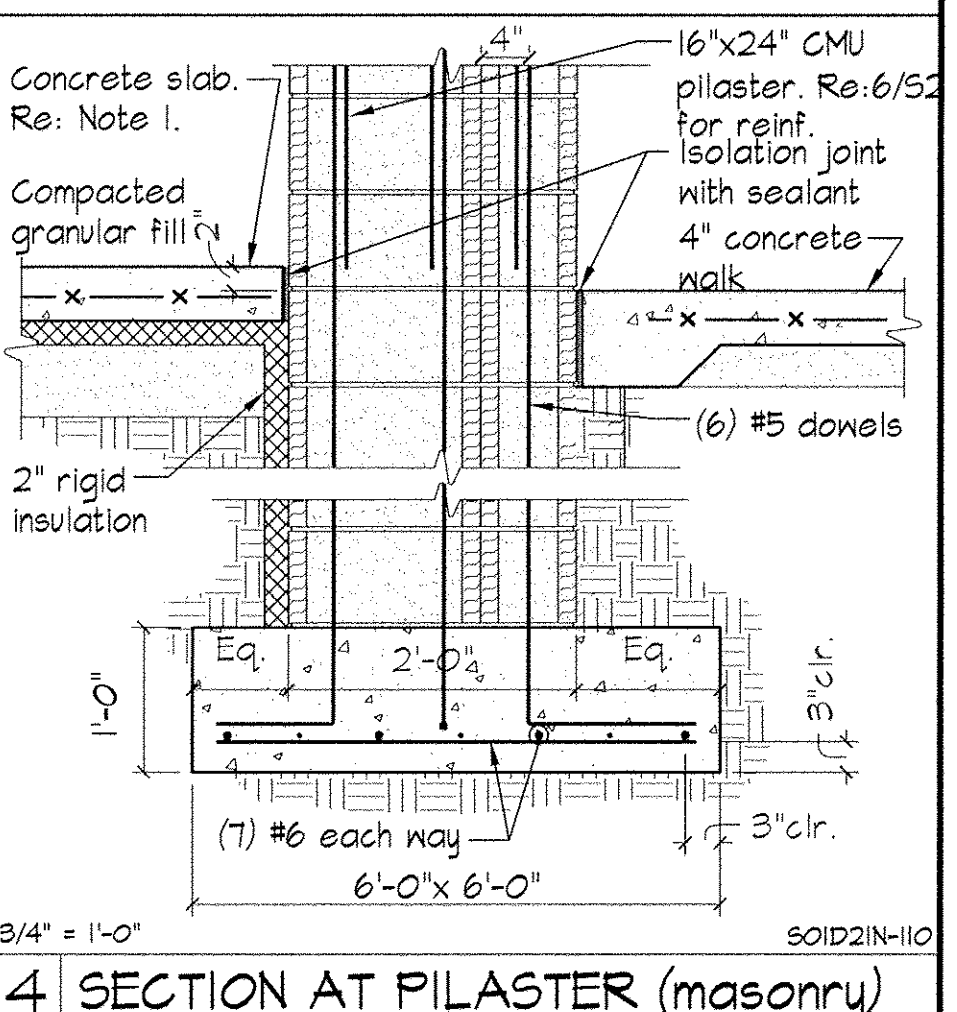
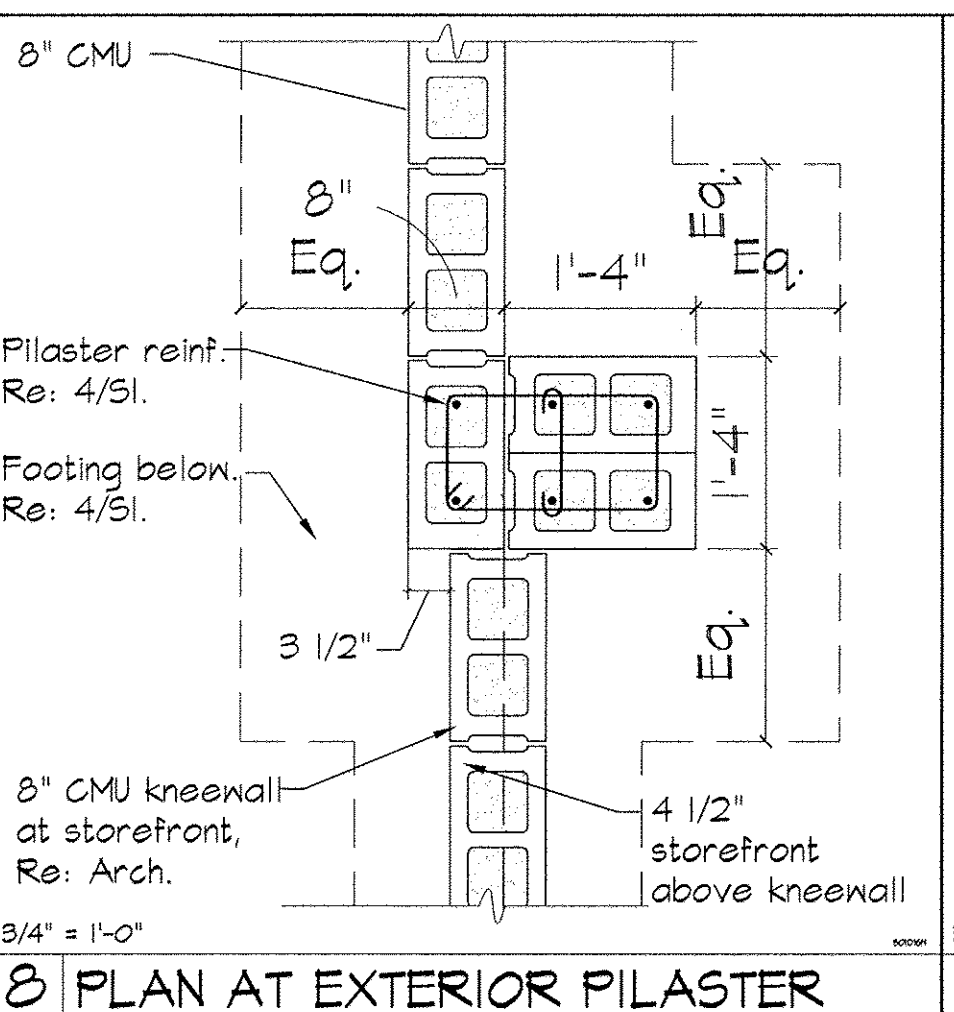
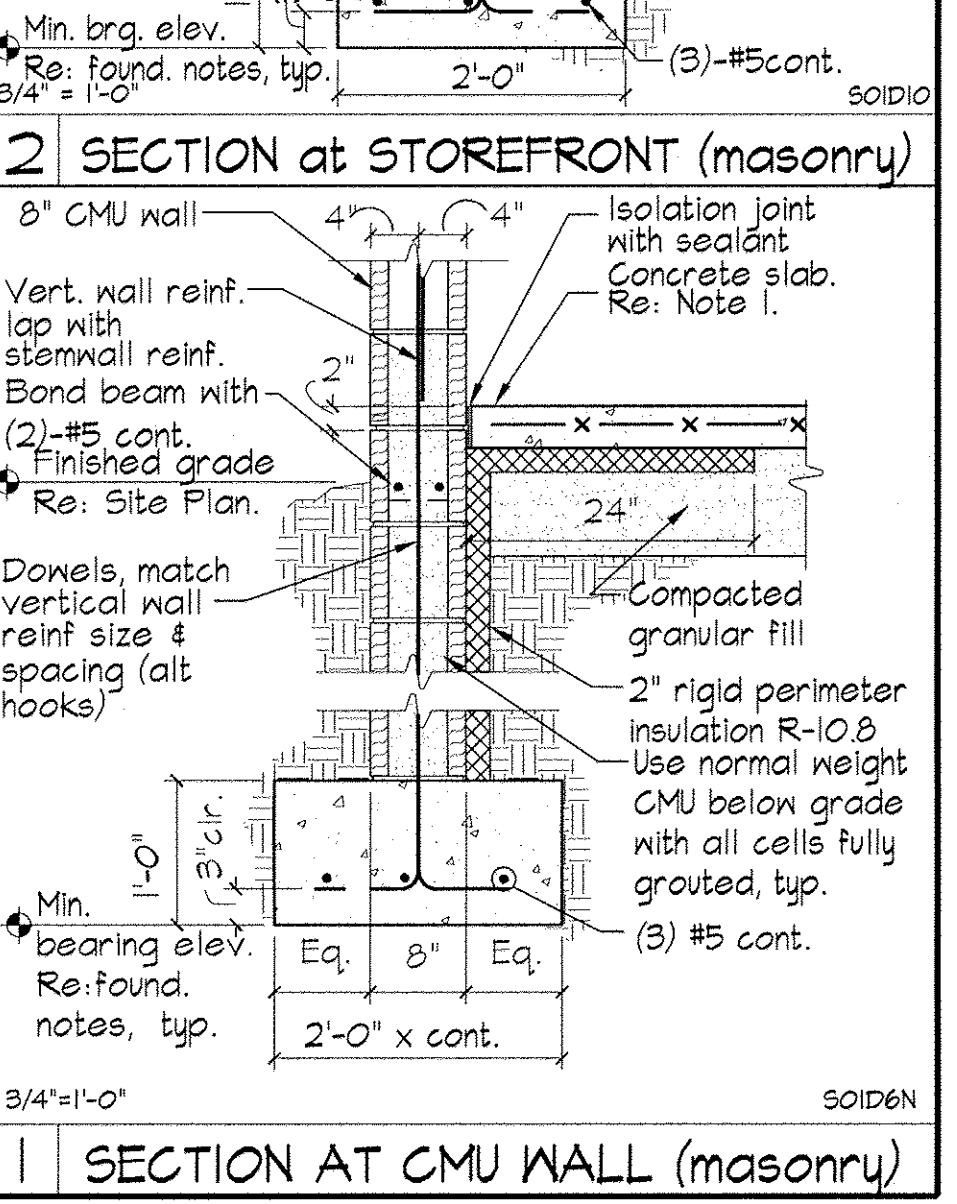
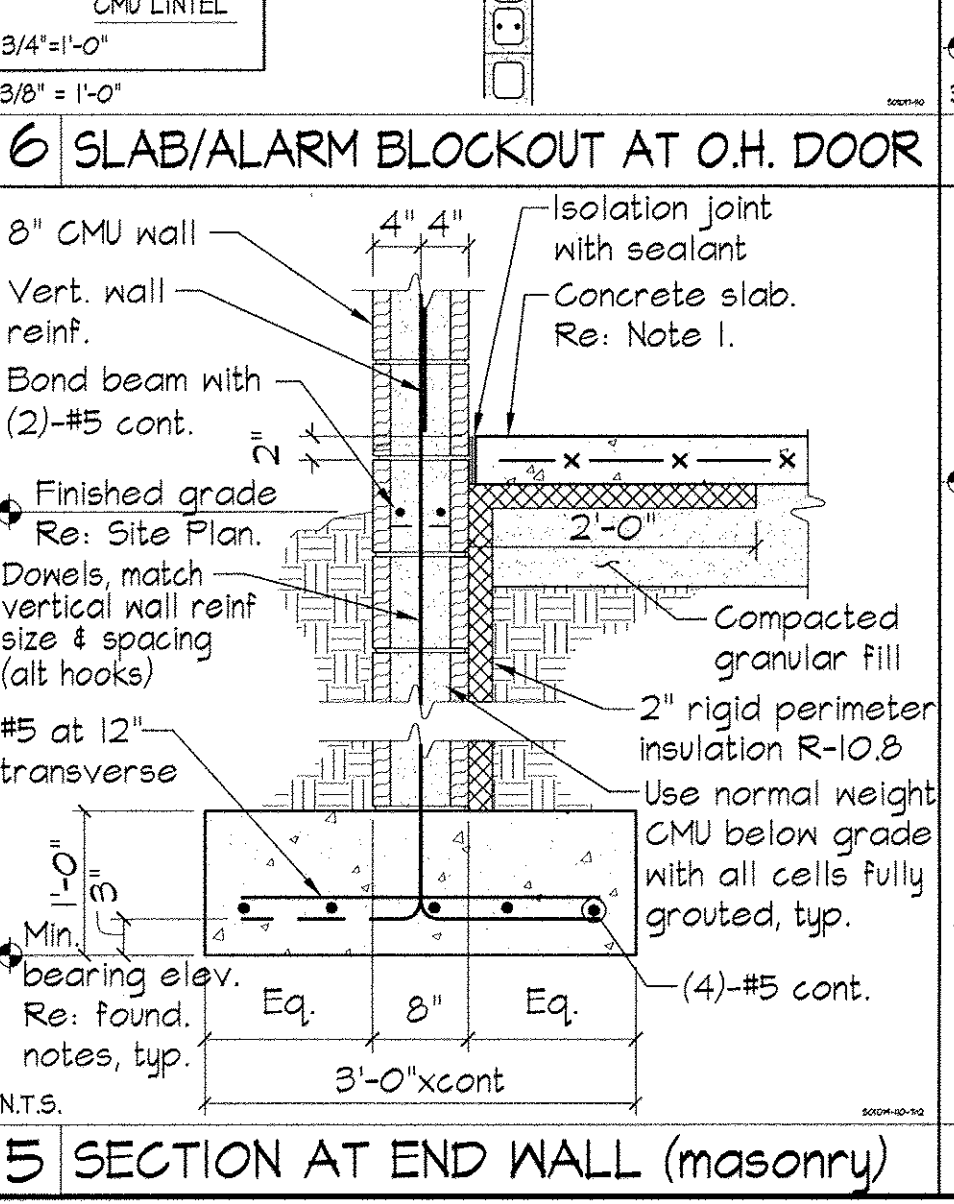
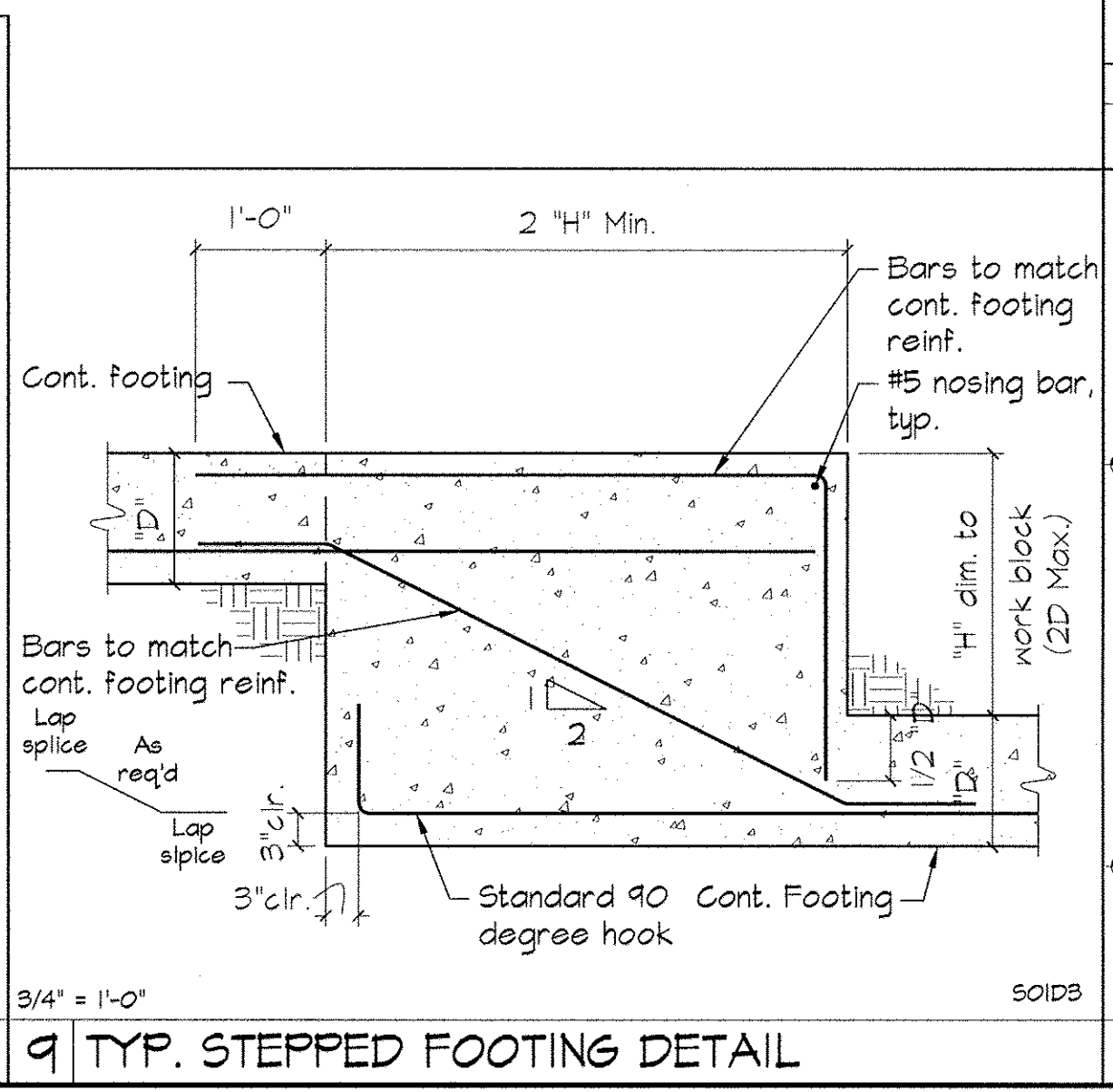
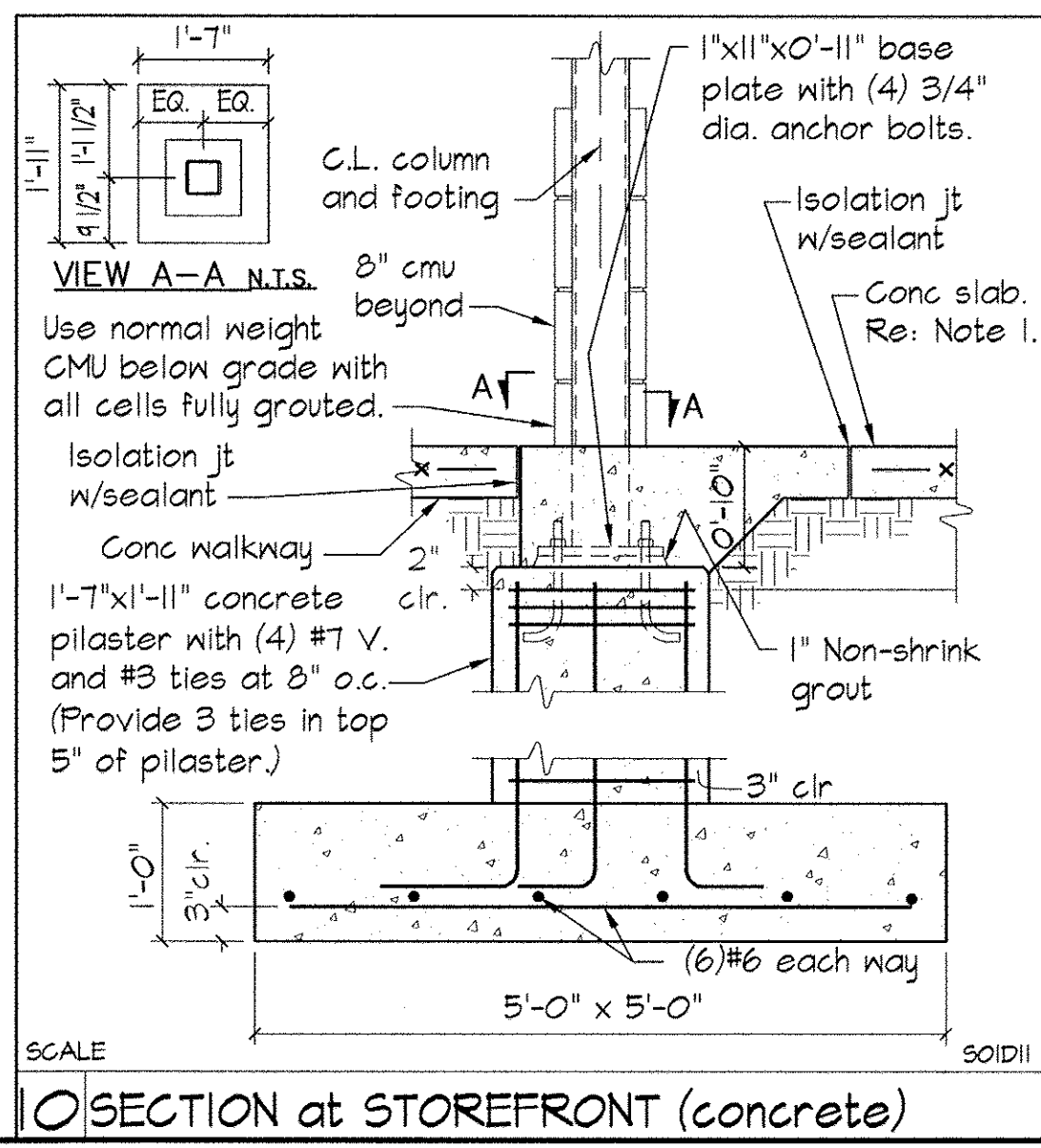
**NOTES:**  
1. 5" slab thickness with 6x6-WI.4xWI.4 W.W.F. or fiberglass. (See specifications for fiberglass requirements). Maintain mesh elevation at one half the thickness of the slab. Place slab over a 10 mil. polyethylene vapor barrier over compacted granular fill.  
2. Entire concrete foundation and slab, each to be poured at one time.  
3. For contraction joints, saw cut one quarter slab thickness, typical. Space equally as shown.

4. For footing sizes, see details.  
Contractor may carry masonry to the footing, or pour concrete stemwalls which ever is more economical.  
5. Miscellaneous concrete: 12"x12"x9" at all exterior clean outs.  
6. All exterior footings shall bear a minimum of 48" below adjacent exterior grade, and a maximum of 62" below finish floor slab.

7. Vertical reinforcing: Provide (1) #6 V. at 32" o.c. all walls. Provide (1) #6 V. at both ends. For 6'-0" M.O. see details. Extend jamb reinforcing full height of wall, typ.  
8. Horizontal reinforcing, typ.: 9ga Galvanized Ladder joint reinforcing spaced at 16" O.C. above grade, and 8" O.C. below grade and in parapets. Bond beams (2) #5 continuous (Re: wall sections and details for locations.)

9. Jamb reinforcing: For 3'-4" M.O., provide 24" jamb with 2-#6 V. per cell both ends. For 6'-0" M.O. see details. Extend jamb reinforcing full height of wall, typ.  
10. Lintel reinforcing: CMU block lintels. At 3'-4" door, provide 8" solid grouted lintel with (1) #5 cont. At 6'-0" door, provide 24" solid grouted lintel with (1) #5 cont., T & B. Re: details for reinf. and plans for door locations.

11. Re: site plans for sidewalks, handicap ramps, and other site specific conditions.  
12. Re: See Electrical sheets for conduit locations.

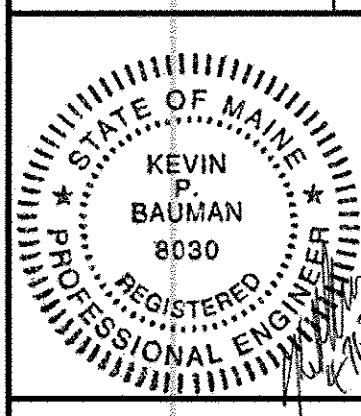


REVISIONS		
1	2	3
4	5	6

AutoZone Store No. 3879  
1207 FOREST AVE  
PORTLAND ME 04103  
ME 04103  
FOUNDATION PLAN AND DETAILS

**PJF PAUL J. FORD & COMPANY**  
250 E. Broad St. Ste 600 - Columbus, OH 43215  
Phone 614.221.6679 www.pauljford.com  
AS2716-0016

Designed By: P.R.D.  
Drawn By: A.A.G.



04/21/2016  
CUSTOM  
**S1**