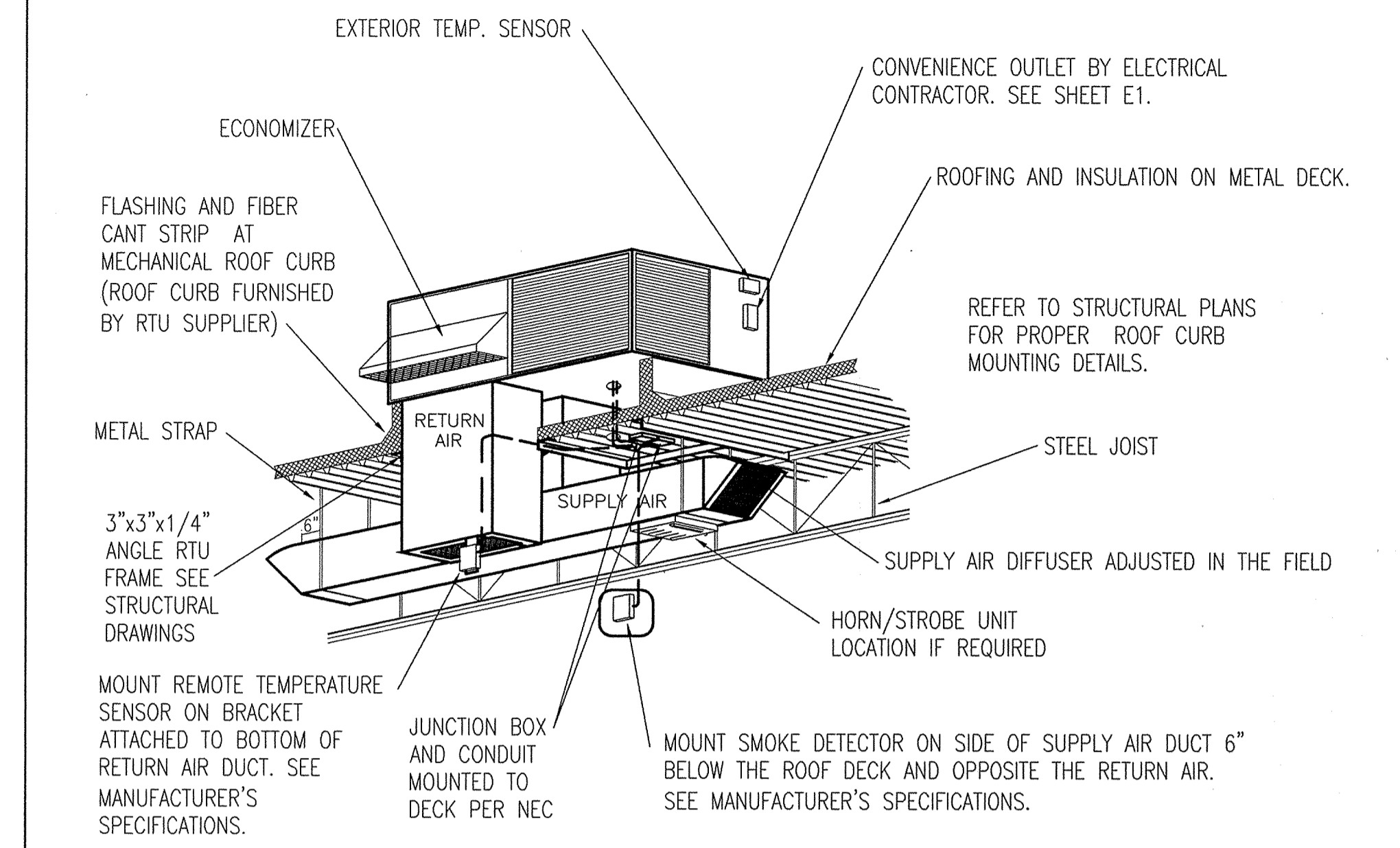
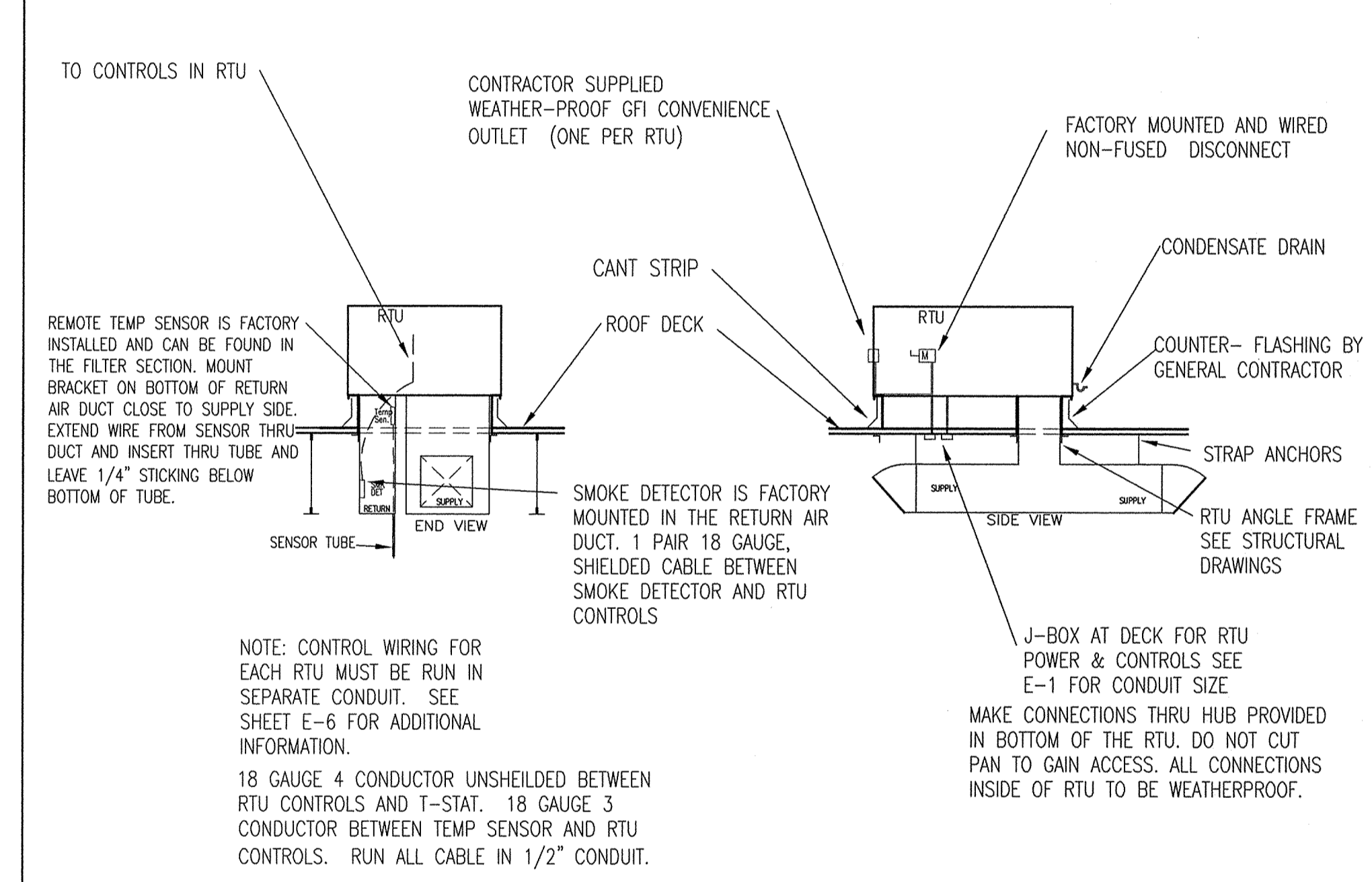


- PACKAGE DUCTWORK NOTES:
1. PACKAGE DUCTWORK IS FURNISHED BY AUTOZONE AND INSTALLED BY CONTRACTOR.
 2. THE BOTTOM OF THE DUCTS ARE TO BE NO LOWER THAN THE BOTTOM OF THE ROOF JOISTS.
 3. DUCTWORK IS 22ga. STEEL INTERNALLY INSULATED.
 4. DUCTWORK IS SHIPPED K/D DISASSEMBLED, CONTRACTOR TO ASSEMBLE IN THE FIELD.
 5. SUPPLY REGISTERS ARE SINGLE DEFLECTION WITH CURVED ADJUSTABLE BLADES.
 6. FACE BARS ON GRILLES ARE ADJUSTABLE TO CUSTOMIZE THE THROW AND PROFILE.
 7. GRILLES ARE DESIGNED TO THROW 24 FEET AT 450 CFM
 8. DUCT PACKAGE IS DESIGNED TO HANDLE 1600 - 2400 CFM WITH .03 STATIC PRESSURE DROP (ALL GRILLES).
 9. RETURN GRILL IS 1/2" STANDARD EXPANDED METAL WITH GASKET.

1/8" = 1'-0"
1 | DUCT LAYOUT



No Scale
4 | ROOFTOP UNIT - VIEW OF RTU



No Scale
5 | ROOF CURB

1. YORK ROOF TOP UNITS WILL BE FURNISHED TO THE JOB SITE ON A SCHEDULED DELIVERY BASIS. THE CURBS, DUCT DROP AND DUCT PACKAGES WILL COME SEPARATELY FROM A THIRD PARTY YORK VENDOR. ALL ITEMS MUST BE REQUESTED WITH A NEEDED DELIVERY DATE IN THE AFI SCHEDULE REQUEST FORM AND SENT TO THE VENDOR AS SOON AS THE JOB NTP'S.

2. ONCE CONSTRUCTION HAS COMMENCED IT WILL BE THE GENERAL CONTRACTOR'S RESPONSIBILITY TO STAY IN TOUCH WITH THE YORK CONTACT AND TO SCHEDULE THE ACTUAL DATE THE ROOF TOP UNIT ARE TO BE DELIVERED TO THE JOB SITE.

3. IT IS EXPECTED THAT WHEN UNITS ARE DELIVERED THEY WILL GO FROM TRUCK TO ROOF AND NOT BE LEFT ON THE GROUND. IF THE JOB SCHEDULE WILL NOT ACCOMMODATE THE ORIGINAL REQUESTED DELIVERY DATE THEN THE GENERAL CONTRACTOR MUST CALL YORK AND RESCHEDULE. UNITS ARE NOT TO BE LEFT ON THE GROUND WHERE THEY MAY BE SUBJECT TO DAMAGE.

4. WHEN UNITS ARRIVE THEY SHOULD BE INSPECTED FOR DAMAGE, AS THE AUTOZONE POLICY ONLY ALLOWS THE GENERAL CONTRACTOR 72 HOURS TO REPORT DAMAGE OR ANY PROBLEM, AFTER WHICH THE ISSUE BECOMES THE CONTRACTORS TO RESOLVE. IF THE DAMAGE IS SUPERFICIAL OR COSMETIC THEN THE UNITS SHOULD BE ACCEPTED, INSTALLED AND REPAIRED IN THE FIELD. IF THE DAMAGE AFFECTS THE OPERATION OF THE UNIT THEN IT SHOULD BE NOTED ON THE BILL OF LADING, NOTIFY YORK TO SCHEDULE A REPLACEMENT AND PICK-UP, AND NOTIFY THE AUTOZONE AFI MANAGER. SEE AUTOZONE AFI POLICY FOR ADDITIONAL INFORMATION.

5. CONTACTS:
TO SCHEDULE DELIVERY: SHAWNA STEPHENS 405-419-6272
TO REPORT DAMAGE: SHAWNA STEPHENS 405-419-6272
FOR TECHNICAL SUPPORT: LEROY BERRY 800-481-9738 OPTION 4
AUTOZONE AFI MANAGER: LEW ELLIS 901-495-8707

1. DOA (Dead on Arrival): LABOR ALLOWANCES APPLY ONLY TO THOSE SITUATIONS WHERE DEFECTS HAVE OCCURRED DIRECTLY AS A RESULT OF FACTORY WORKMANSHIP AND/OR MATERIALS. REIMBURSEMENT WILL NOT BE ALLOWED WHERE DAMAGE HAS BEEN SUSTAINED AS A RESULT OF MISAPPLICATION OR IMPROPER INSTALLATION.

2. FOR ALL DOA AND ANY OTHER WARRANTY ISSUES THE CONTRACTOR SHALL CALL THE YORK WARRANTY GROUP FOR INSTRUCTIONS ON HOW TO PROCEED. YORK WILL RESPOND TO ALL WARRANTY REQUESTS OR ISSUES WITHIN 24 HOURS. PROCEEDING WITH WORK IN ADVANCE OF NOTIFYING YORK MAY RESULT IN CONTRACTOR NOT BEING REIMBURSED FOR ALL OF HIS COSTS.

3. AS YORK HAS PRE ASSIGNED LABOR VALUES TO ALL PARTS OF THE ROOF TOP UNIT, CONTRACTOR MUST GET YORK'S CONCURRENCE IN THE CONTRACTOR'S ESTIMATED LABOR CHARGE TO DO THE WORK PRIOR TO COMMENCING, OR CONTRACTOR MUST AGREE TO YORK'S LABOR ALLOWANCE. PARTS WILL BE FURNISHED AT NO COST BY YORK, THEY MAY ASK CONTRACTOR TO RETURN THE DEFECTIVE PART AND CONTRACTOR MUST DO SO.

4. FOR EXPEDITED SERVICE CONTRACTOR SHOULD HAVE THE MODEL AND SERIAL NUMBER OF THE UNIT IN QUESTION PRIOR TO MAKING A CALL FOR WARRANTY SERVICE.

5. CONTACTS:
FOR WARRANTY ISSUES: JESSICA RIBBLE 800-481-9738 OPTION 4
FOR TECHNICAL SUPPORT: LEROY BERRY 800-481-9738 OPTION 4

1/8" = 1'-0" MHN03
2 | YORK HVAC NOTES

1/8" = 1'-0" MHN04
3 | YORK WARRANTY NOTES

MARK	MANUFACTURER MODEL NO.	SUPPLY AIR	MIN. O.S.A.	E.S.P.	COOLING DATA				HEAT INPUT			ELECTRICAL REQ. UNIT M.C.A. 208/3Ø/60Hz	BREAKER	ECONOMIZER	COIL COATING	UNIT WEIGHT	
					ENT. AIR D.B.	W.B.	TOTAL	SENSIBLE	EER	ENT. AIR D.B.	INPUT						OUTPUT
RTU-1	YORK ZYG08D2	3000 CFM	820 CFM	0.25 IN.	80	67	98,400 BTU	72,200 BTU	12.0	70	125,000 BTU	100,000 BTU	40.4	50	Required	No	990
RTU-2	YORK ZYG08D2	3000 CFM	820 CFM	0.25 IN.	80	67	98,400 BTU	72,200 BTU	12.0	70	125,000 BTU	100,000 BTU	40.4	50	Required	No	990

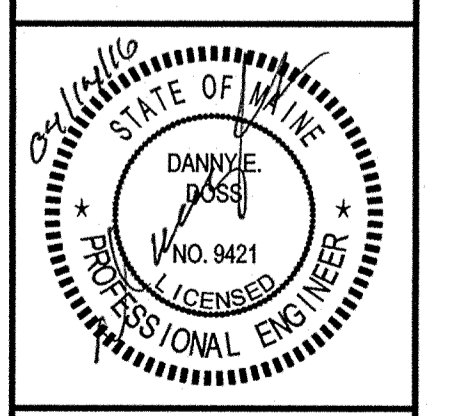
3/32" = 1'-0" MHC01
6 | ROOFTOP UNIT HEATING AND COOLING SCHEDULE

REVISIONS

1	2	3	4	5	6
---	---	---	---	---	---

AutoZone Store No. 3879
1207 FOREST AVE
PORTLAND ME 04103
HEATING AND COOLING

ENGINEER: DANNY E. DOSS P.E.
132 Kelley Drive
Rogers, Arkansas 72756
TEL: (479) 631-1712 FAX: (479) 631-1854
For Bidding & Contractor Information Contact:
McGraw - Hill Construction Tel. 615-884-1017
www.construction.com



04/04/16
7N2-R

M-1.1