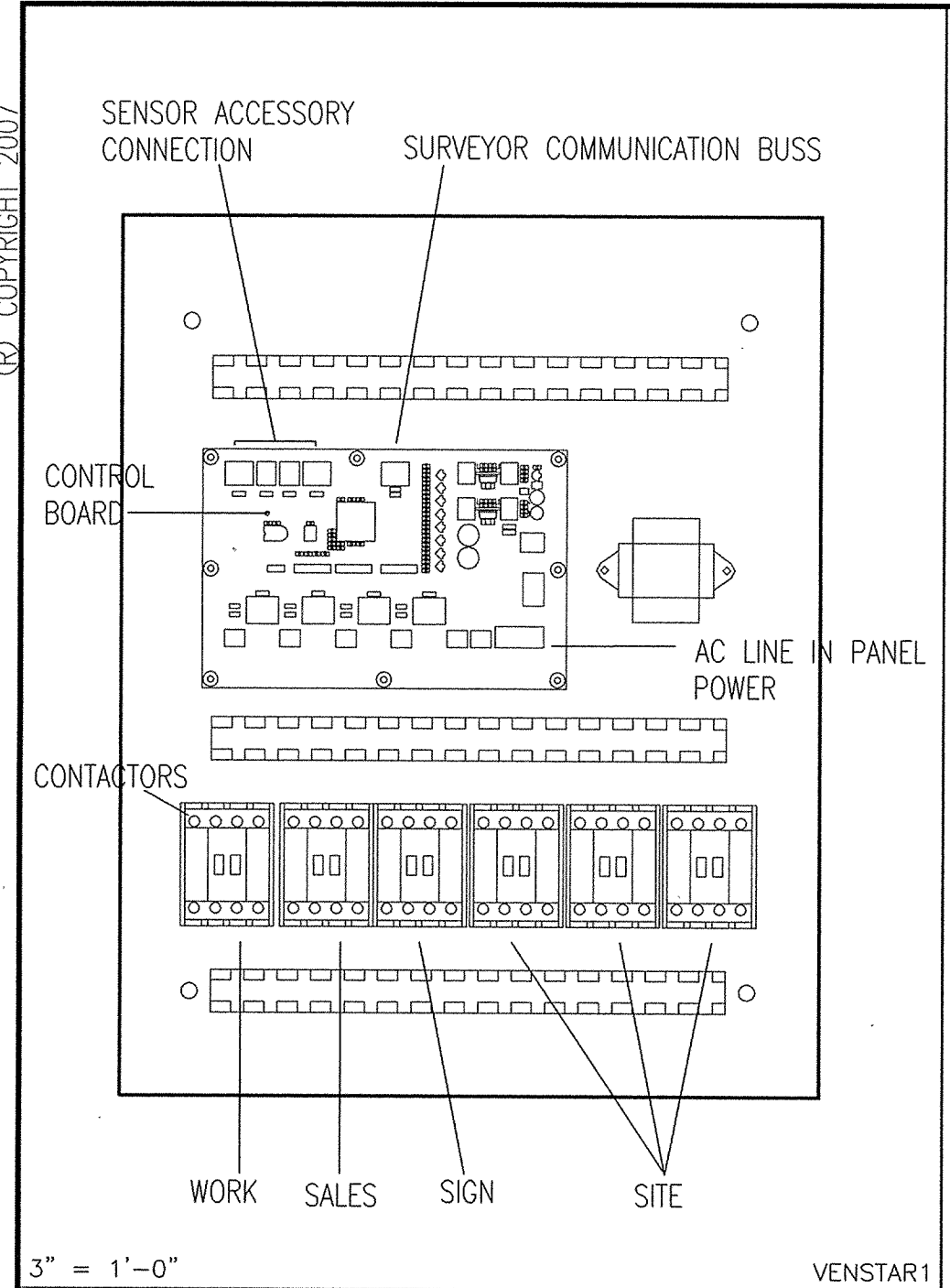
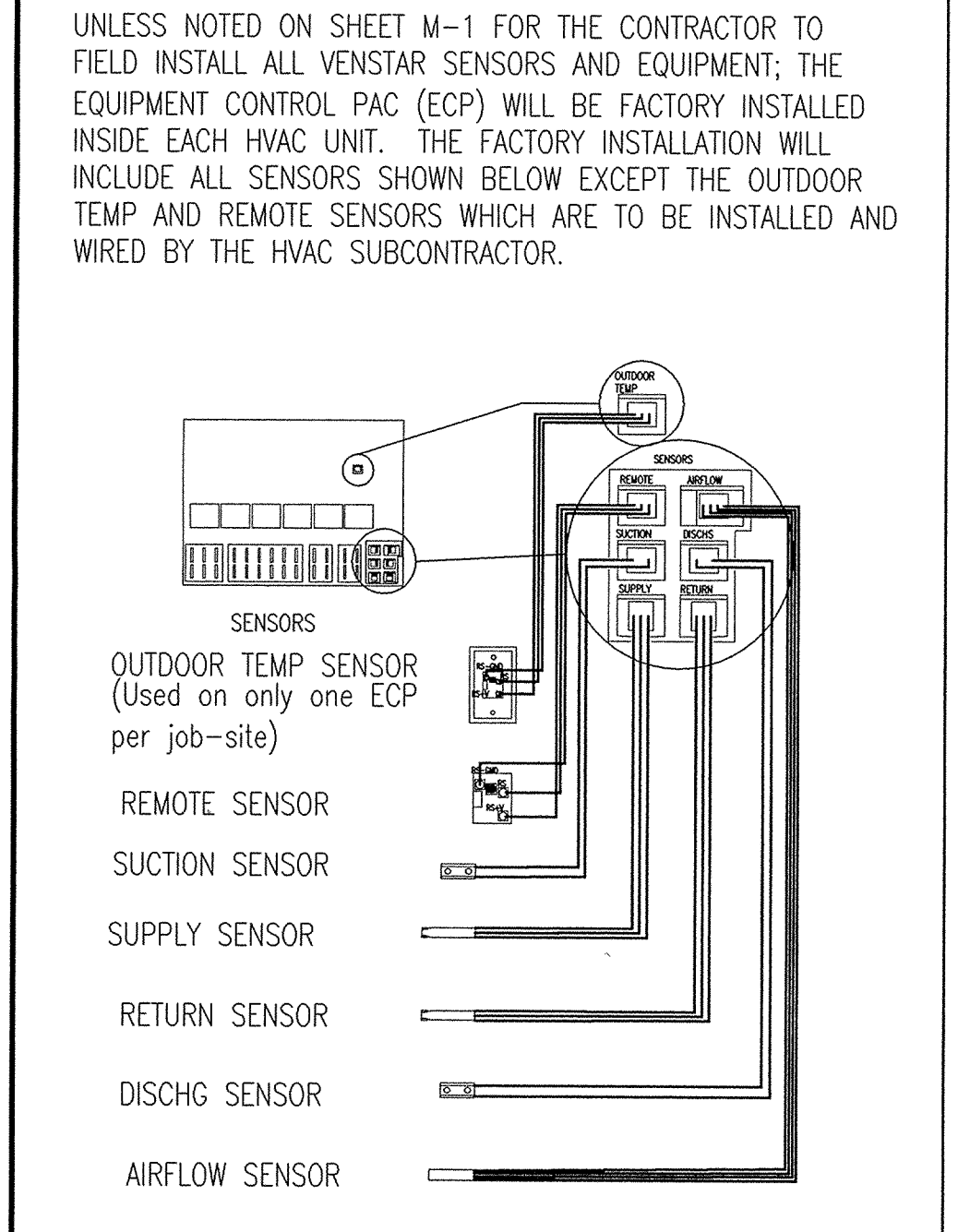


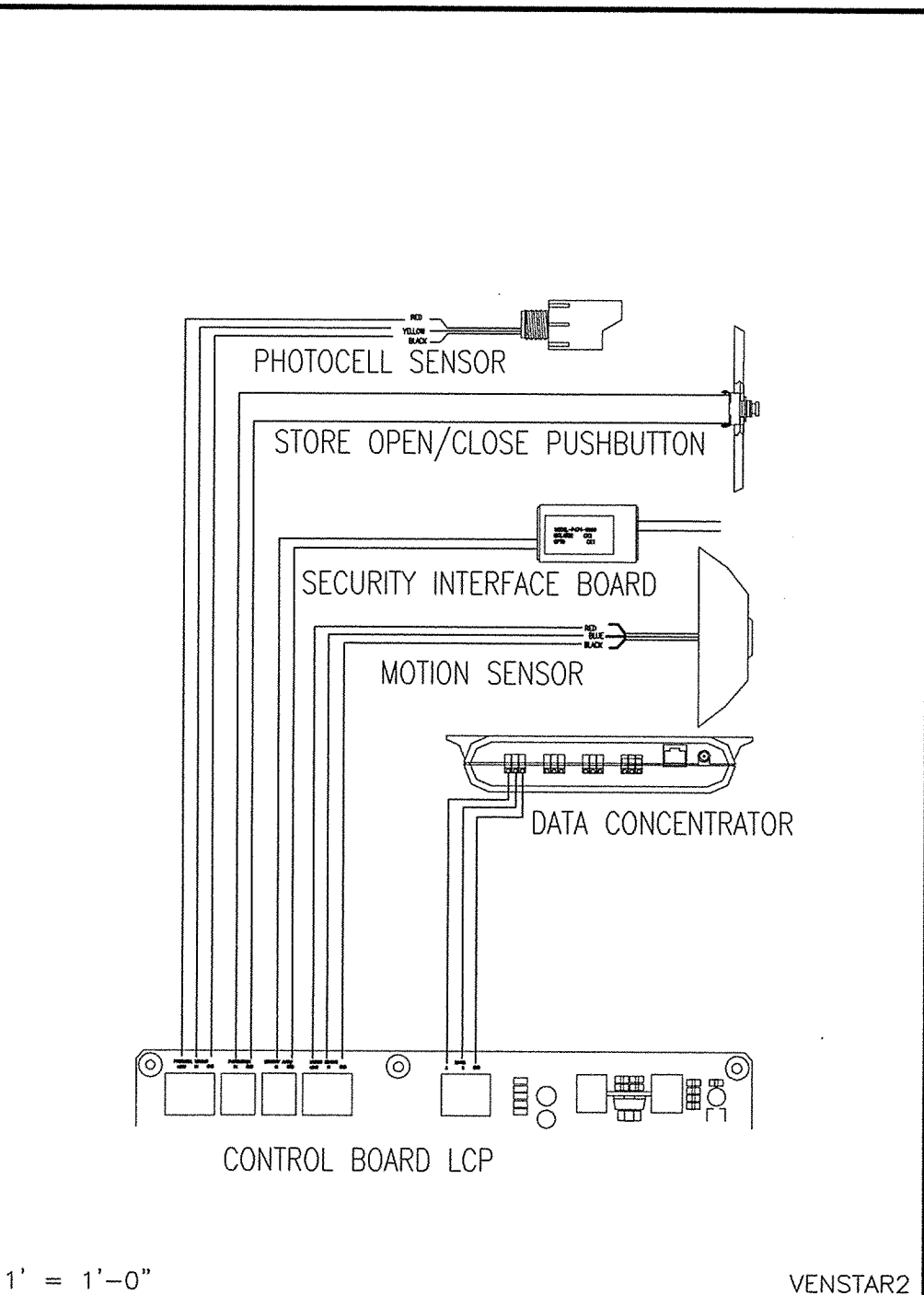
© COPYRIGHT 2007



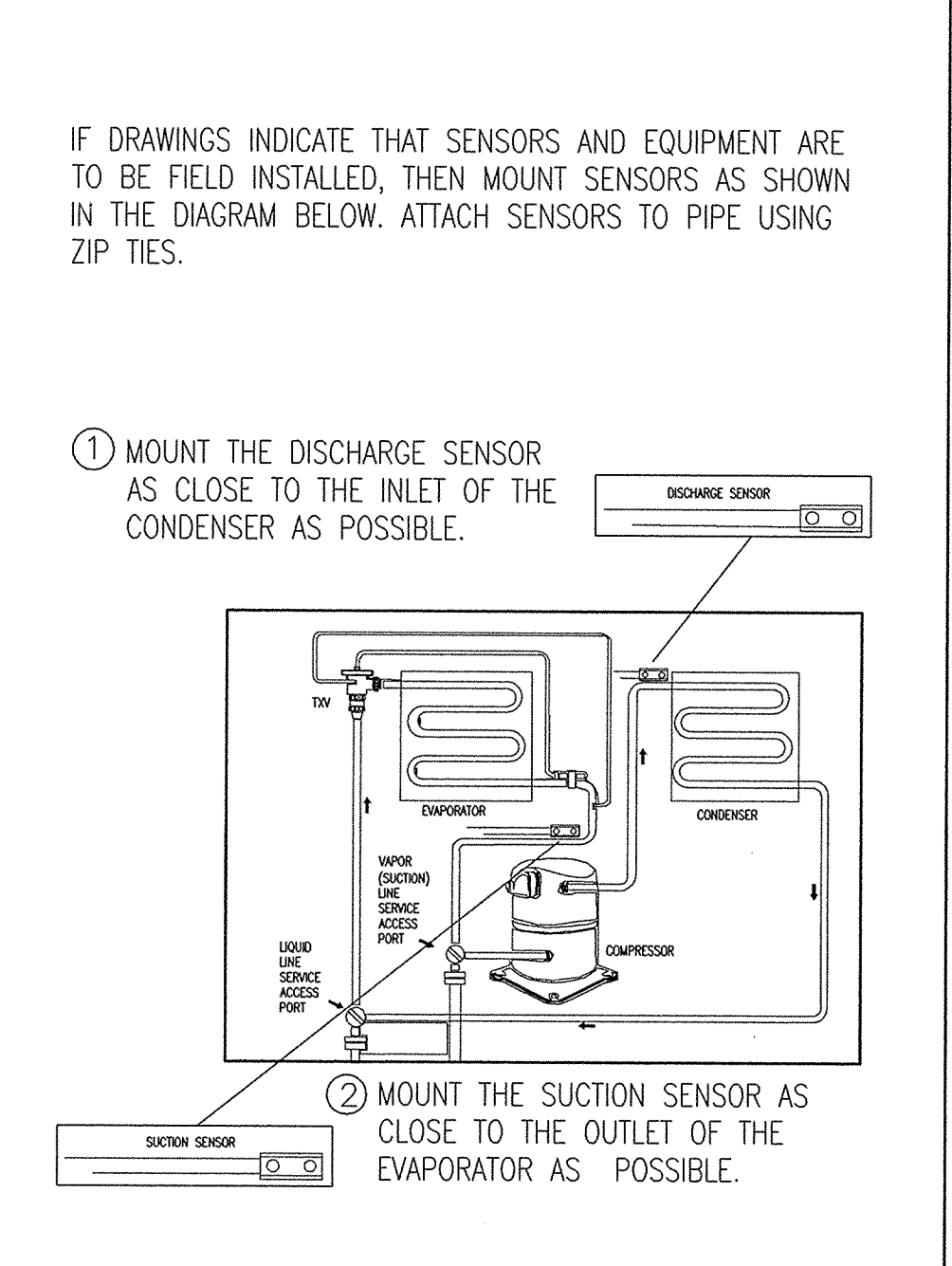
1 | LOCATION OF CONTROLS



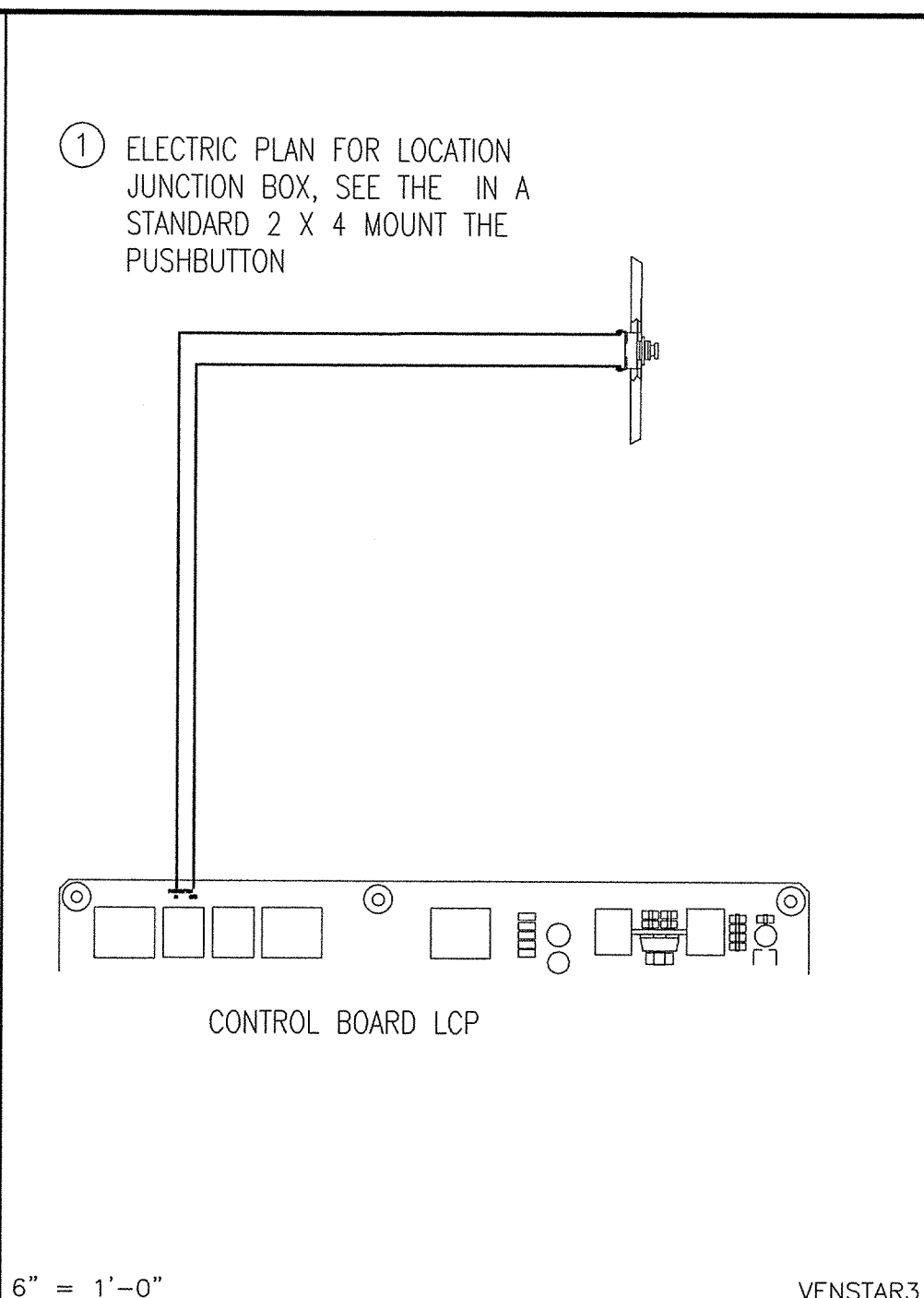
7 | ECP SENSOR CONNECTIONS



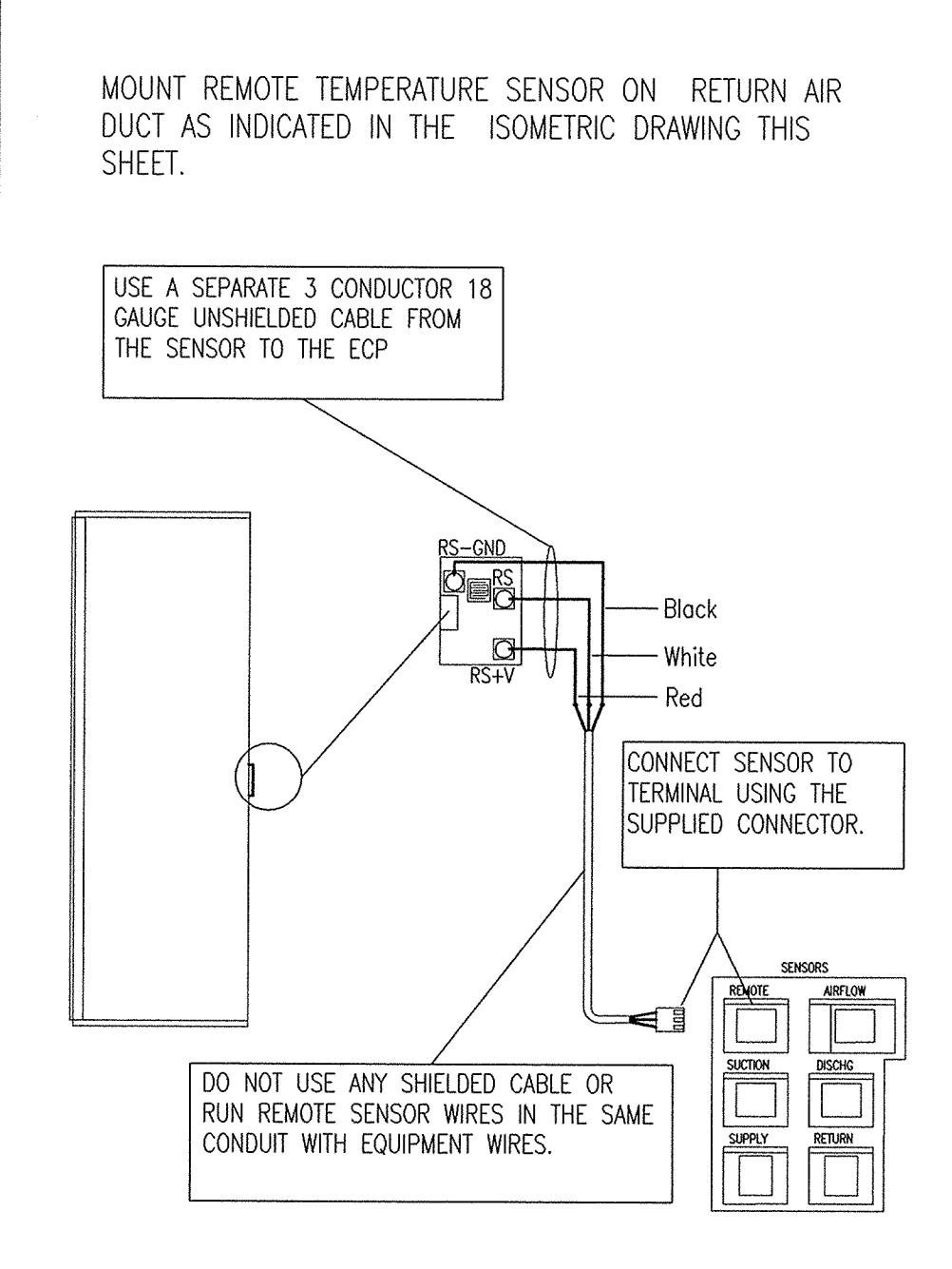
2 | WIRING DIAGRAM - LCP



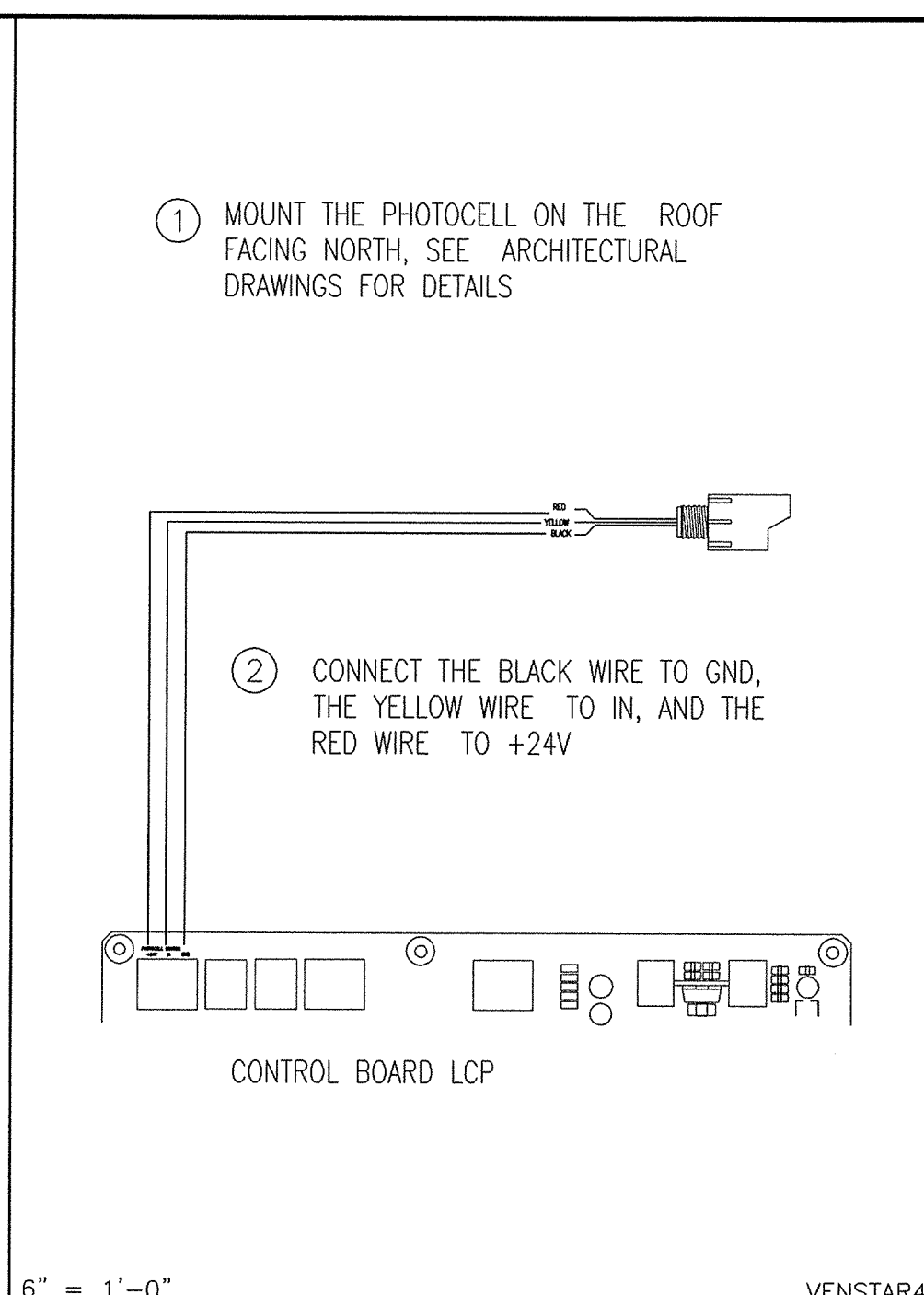
8 | LOCATION OF SENSORS



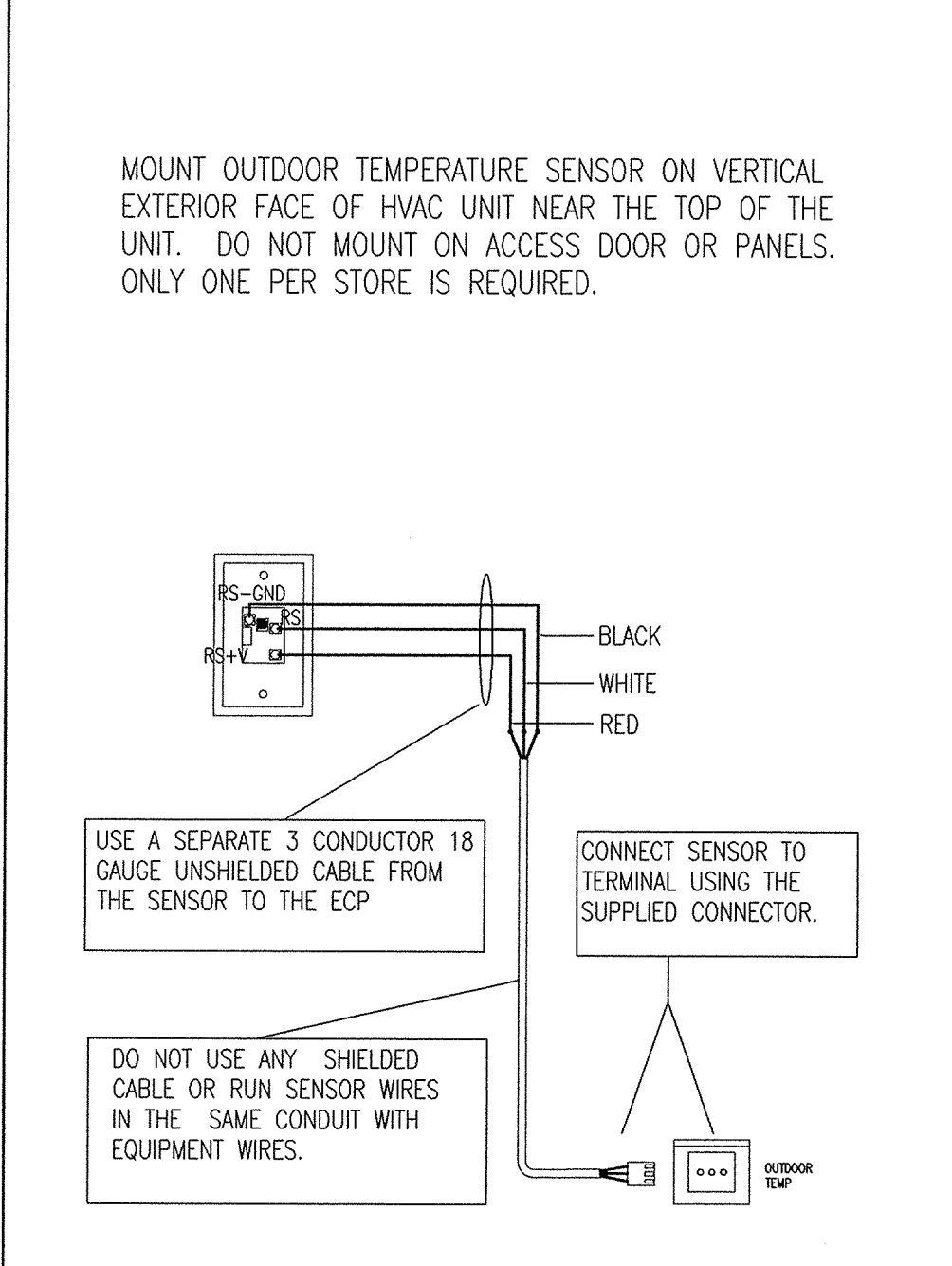
3 | OPEN / CLOSE BUTTON



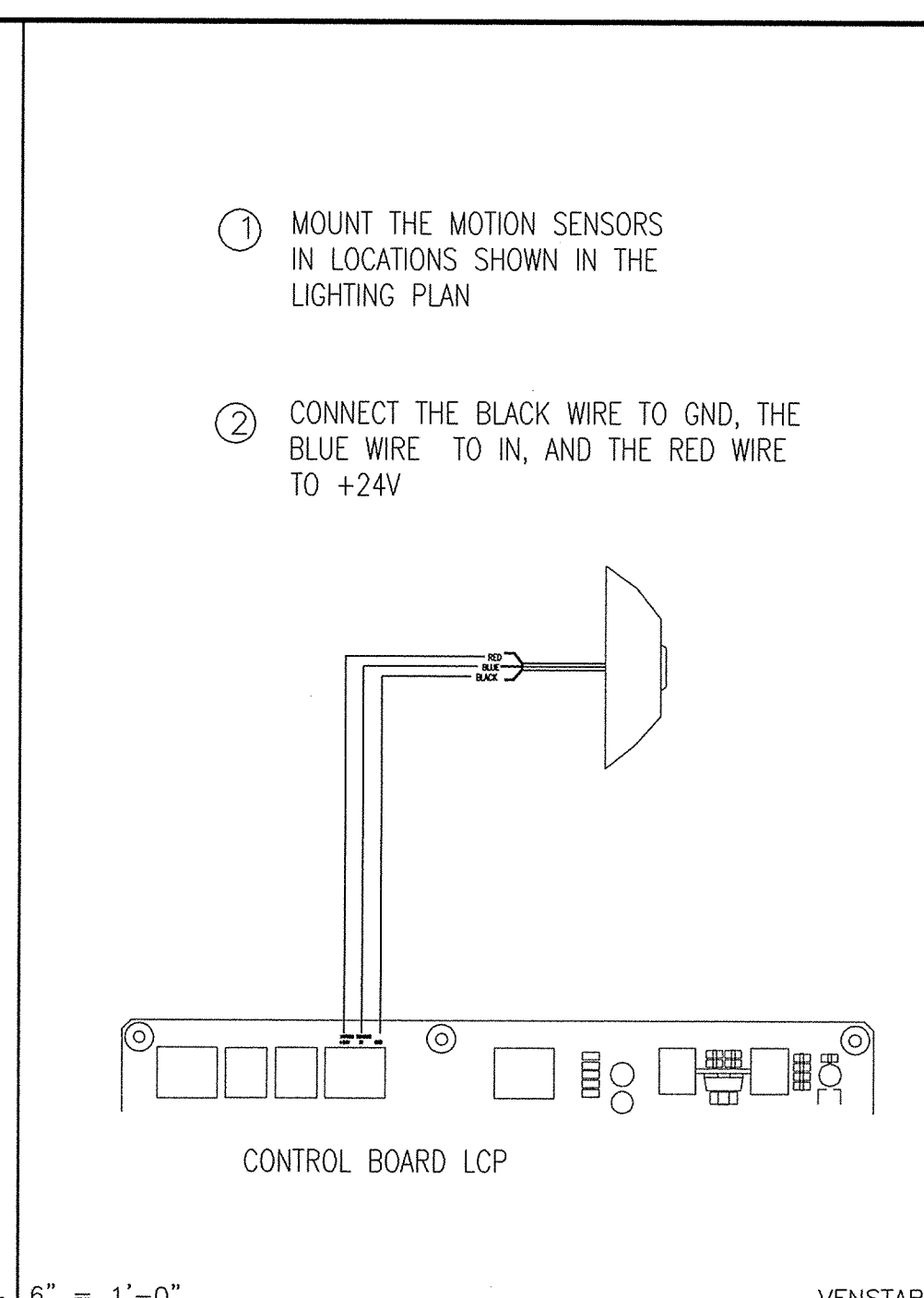
9 | LOCATION OF SENSORS



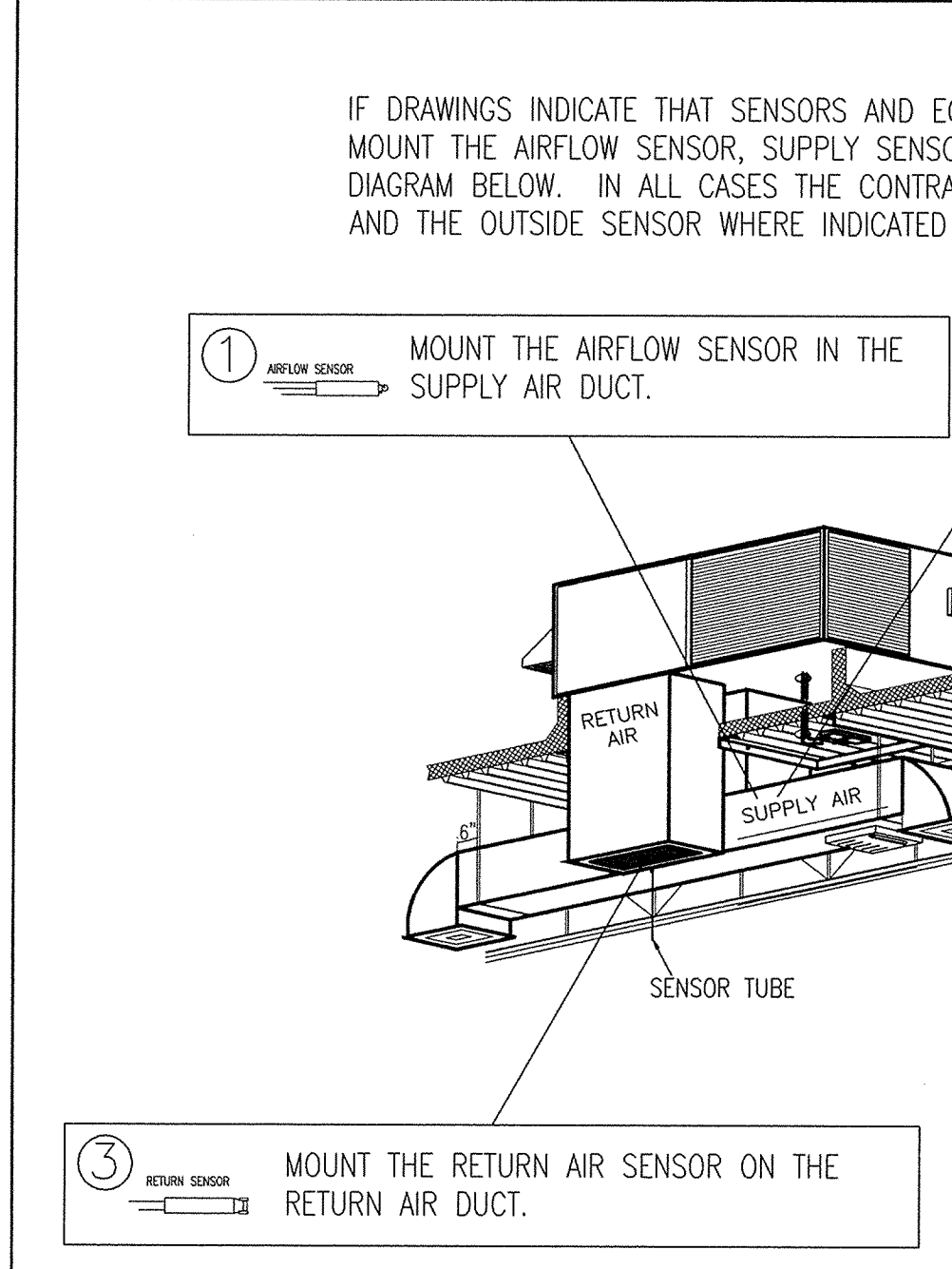
4 | PHOTOCELL SENSOR



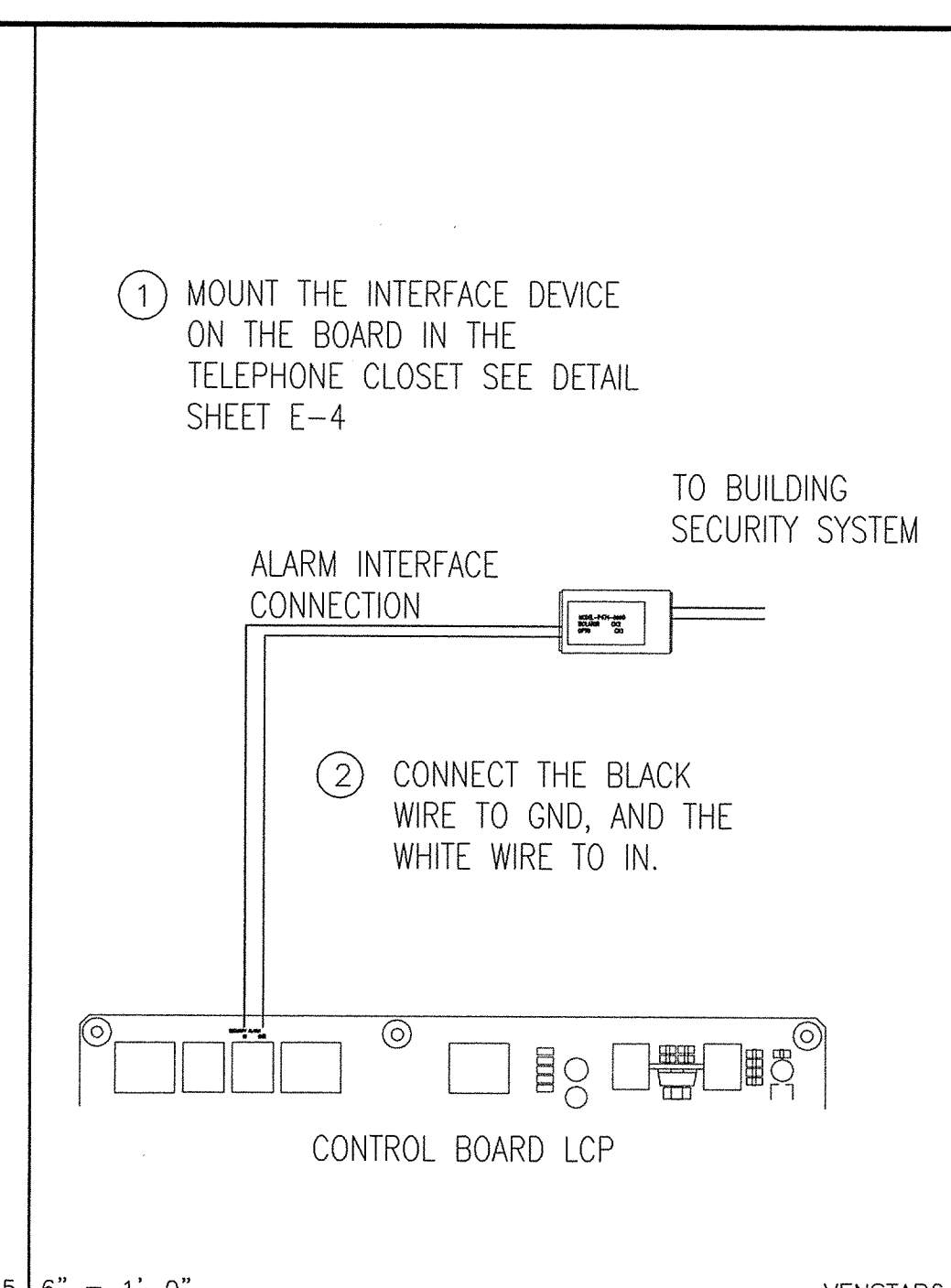
10 | LOCATION OF SENSORS



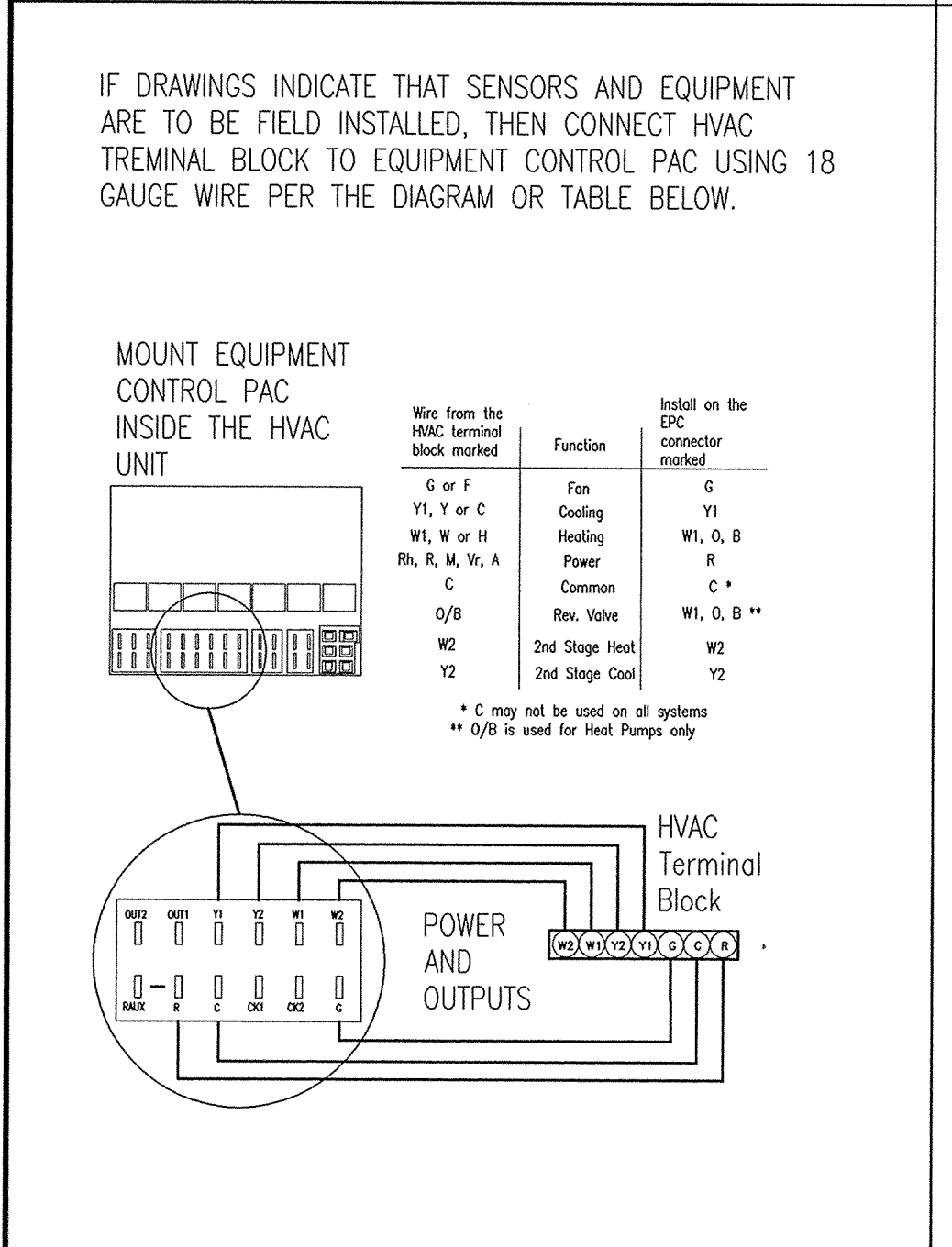
5 | MOTION SENSOR



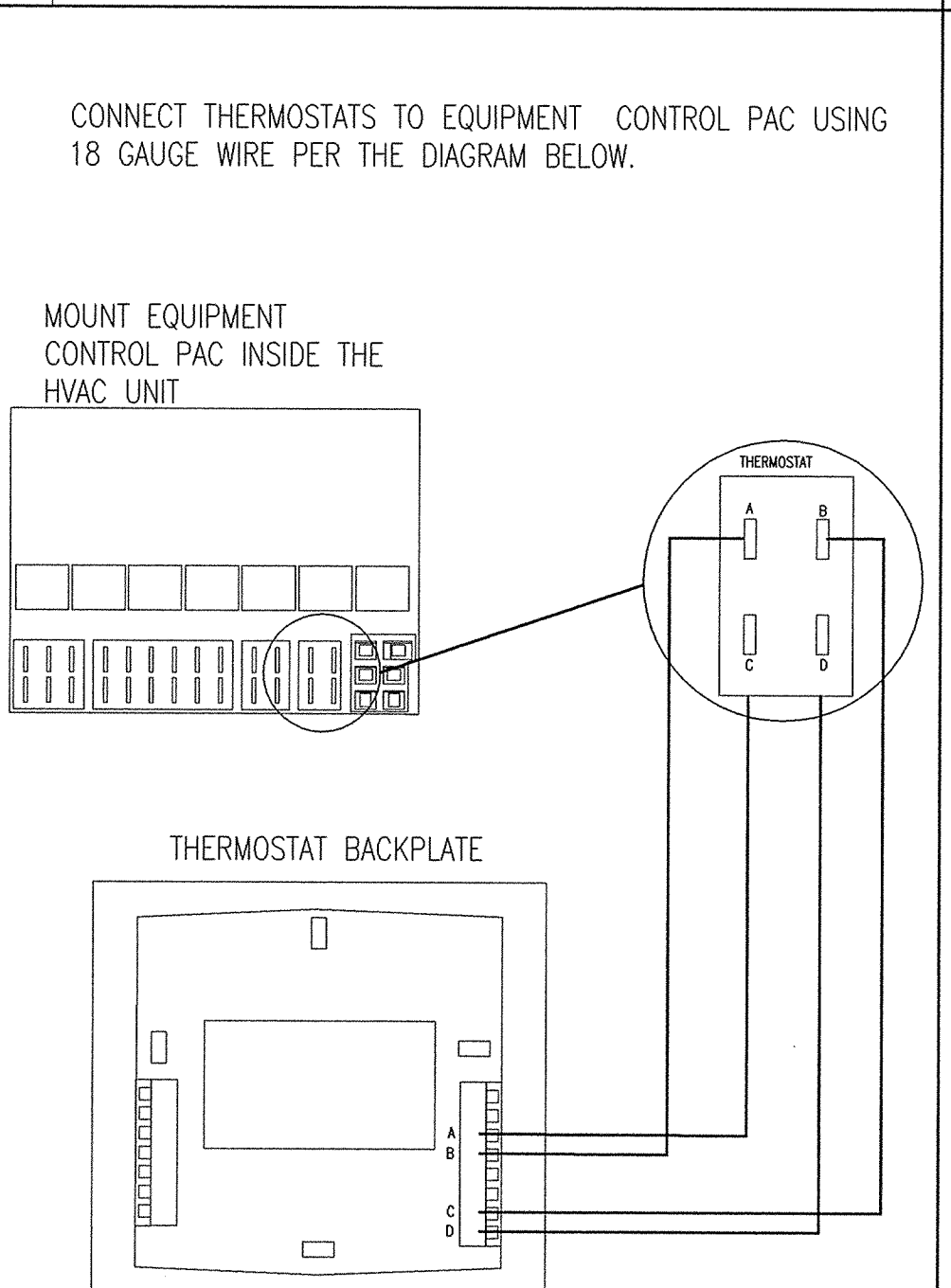
11 | SENSOR LOCATION



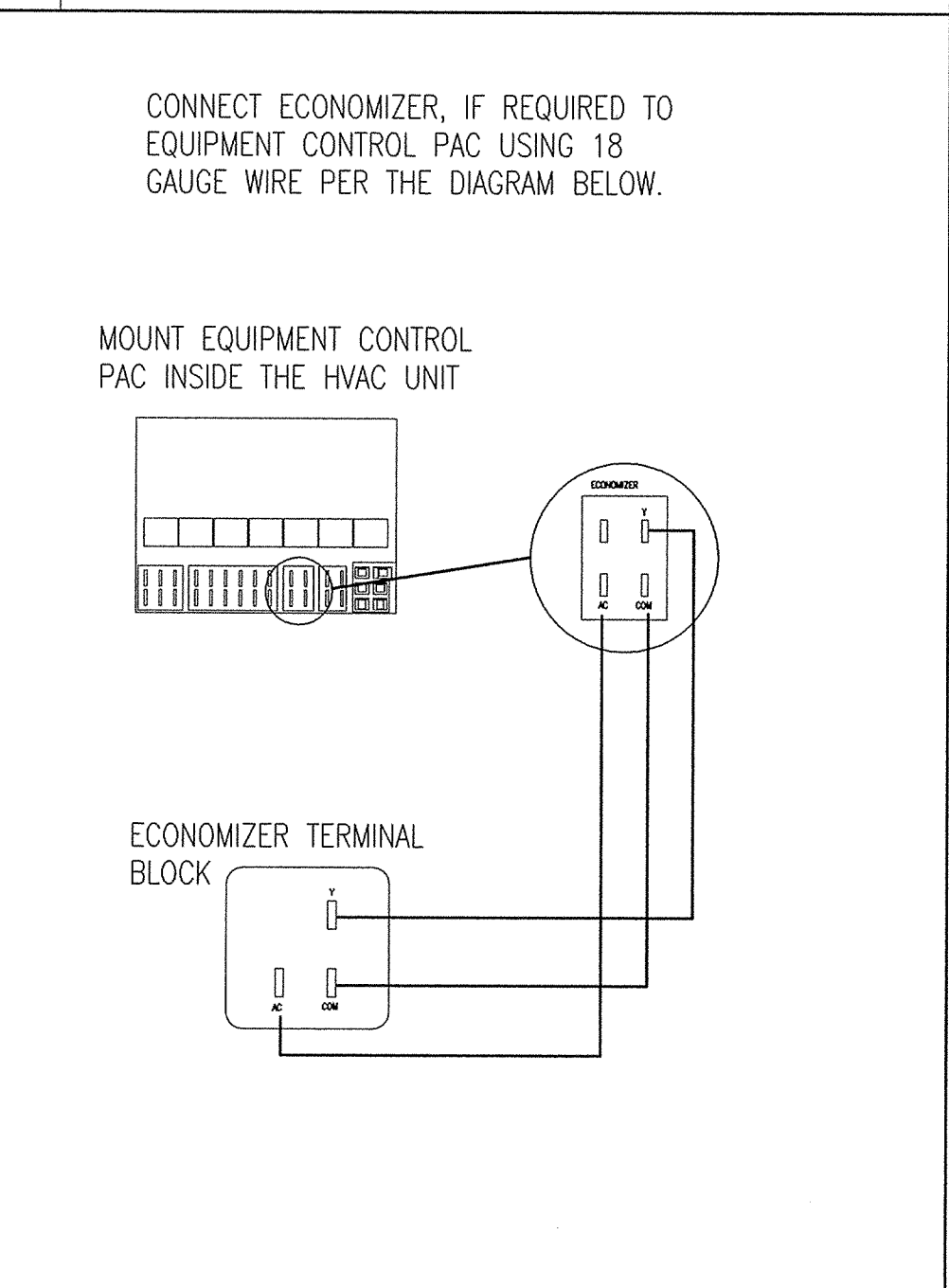
6 | ALARM INTERFACE



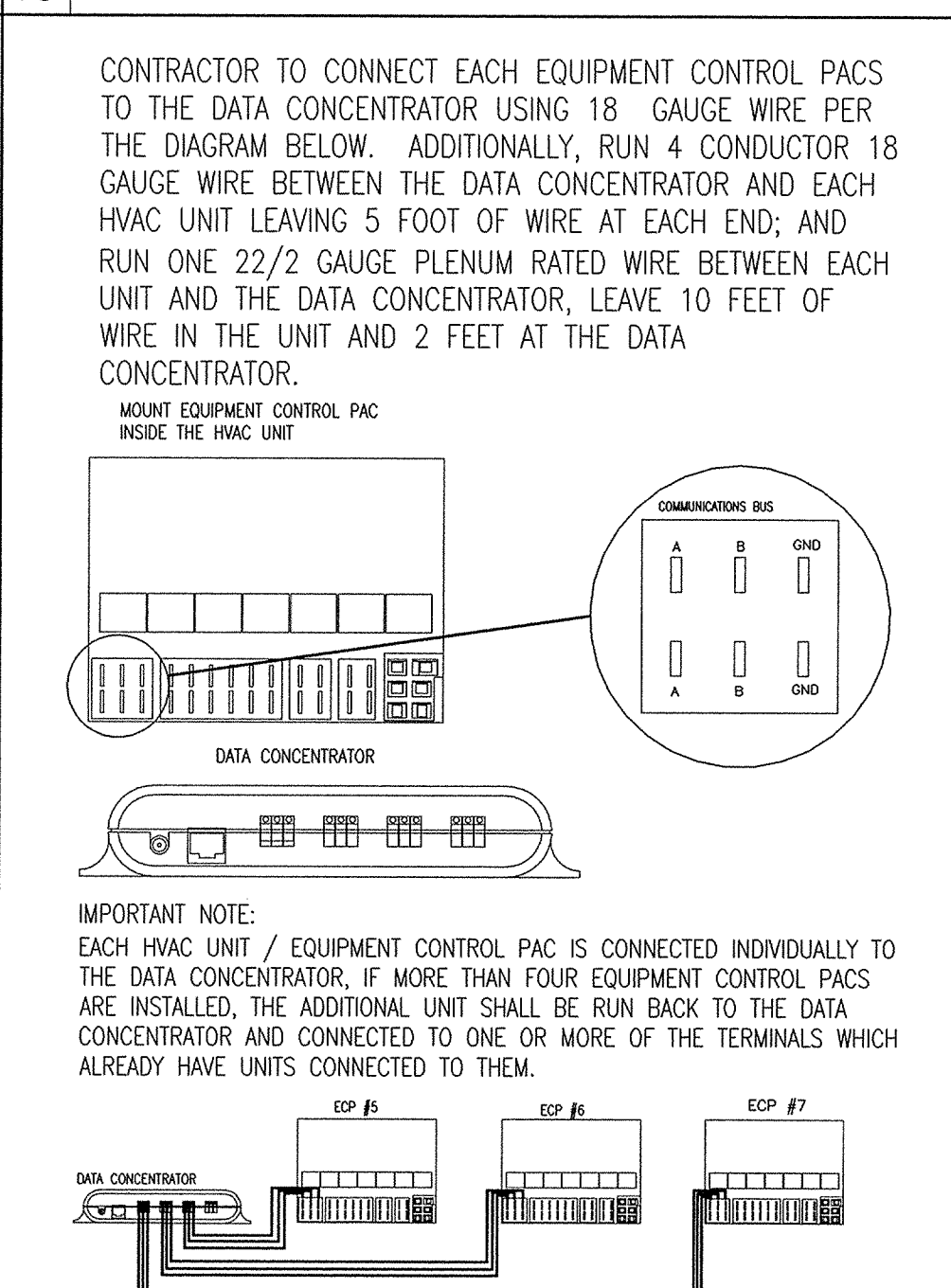
12 | HVAC CONNECTIONS



13 | THERMOSTAT CONNECTIONS



14 | ECONOMIZER CONNECTIONS



15 | CONCENTRATOR CONNECTIONS

VENSTAR CONTROL WIRING GENERAL NOTES - PROTOTYPE

- AUTOZONE WILL FURNISH VENSTAR LIGHTING AND HVAC CONTROL DEVICES AS INDICATED ON THIS SHEET, CONTRACTOR WILL FURNISH ALL OTHER MATERIAL AND LABOR REQUIRED TO COMPLETE THE INSTALLATION.
- UNLESS NOTED OTHERWISE ELSEWHERE IN THE DRAWINGS ROOF TOP UNITS WILL COME WITH FACTORY INSTALLED SUCTION, DISCHARGE, SUPPLY, RETURN AIR AND AIRFLOW SENSORS, AS WELL AS AN EQUIPMENT CONTROL PAC INSIDE THE UNIT. THE OUTDOOR TEMP. AND REMOTE TEMP. SENSORS ARE TO BE INSTALLED BY CONTRACTOR. MOUNT THE DATA CONCENTRATOR ON THE PHONE BOARD UPPER LEFT HAND SIDE ABOVE THE LOCAL PHONE COMPANY'S EQUIPMENT SPACE, AND MOUNT THE LIGHTING CONTROL UNIT AND THERMOSTATS ON THE WALL ABOVE THE ELECTRIC PANELS, ALL AS INDICATED ON DRAWINGS.
- ALL WIRING TO BE RUN IN 1/2" CONDUIT.
- FOLLOW VENSTAR INSTALLATION INSTRUCTIONS OUTLINED ON THIS SHEET. FOR ANY QUESTIONS OR CLARIFICATIONS CONTACT AUTOZONE'S PROJECT MANAGER.
- AUTOZONE'S VENDOR WILL RUN ONE CATAGORY 5 DATA CABLE FROM THE DATA CONCENTRATOR IN THE TELEPHONE CLOSET DOWN THROUGH THE POWER POLE IN THE MANAGER'S OFFICE AREA IN ORDER TO ACTIVATE THE COMMUNICATIONS.
- NORMALLY THE HVAC CONTRACTOR WILL INSTALL ALL HVAC SENSORS AND WIRING FOR SAME, AND THE ELECTRICAL CONTRACTOR WILL INSTALL LIGHTING CONTROL PANEL, ALL ACCESSORIES, DATA CONCENTRATOR AND DATA CABLE.
- CONTRACTOR MAY USE ONE OF THE CONTACTORS DEDICATED TO SIGNAGE FOR ADDITIONAL SITE LIGHT CIRCUITS IF NEEDED. CONTRACTOR WILL NEED TO CHANGE THE CONTACTORS CONNECTION ON THE CONTROL BOARD TO MATCH THE SITE LIGHT CONTACTORS.

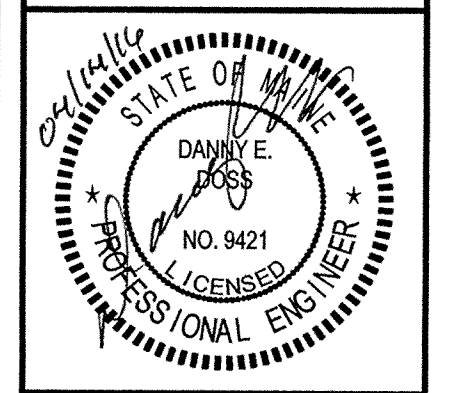
16 | CONTROL WIRING GENERAL NOTES

REVISIONS

1	REV1	4	REV4
2	REV2	5	REV5
3	REV3	6	REV6

AutoZone Store No. 3879
1207 FOREST AVE
PORTLAND ME 04103
VENSTAR HVAC AND LIGHTING CONTROL

ENGINEER: DANNY E. DOSS P.E.
132 Kelley Drive
Rogers, Arkansas 72756
TEL: (479) 631-1712 FAX: (479) 631-1854
For Bidding & Contractor Information Contact:
McGraw - Hill Construction Tel. 615-884-1017
www.construction.com



04/04/16
7N2-R
E-6