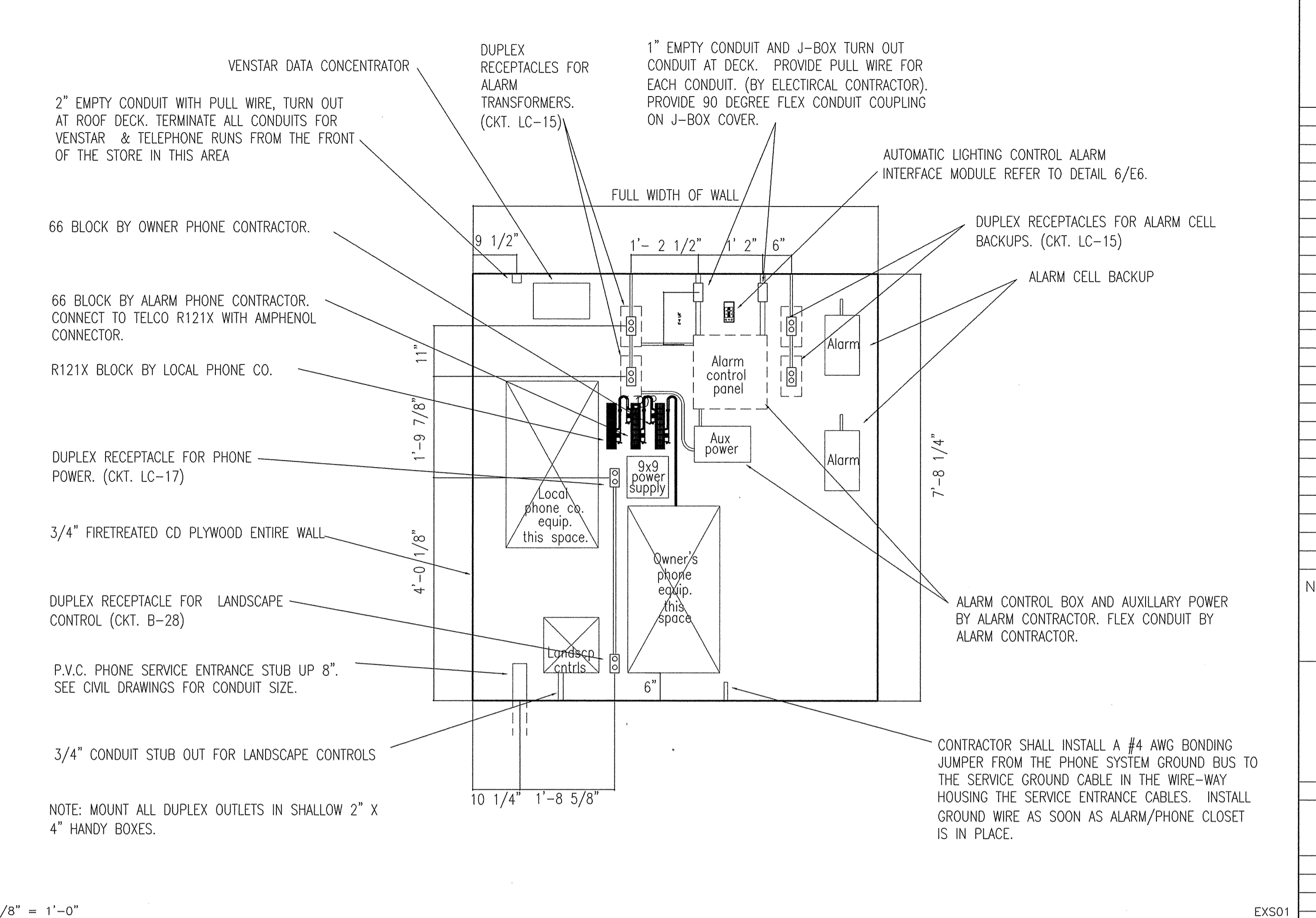
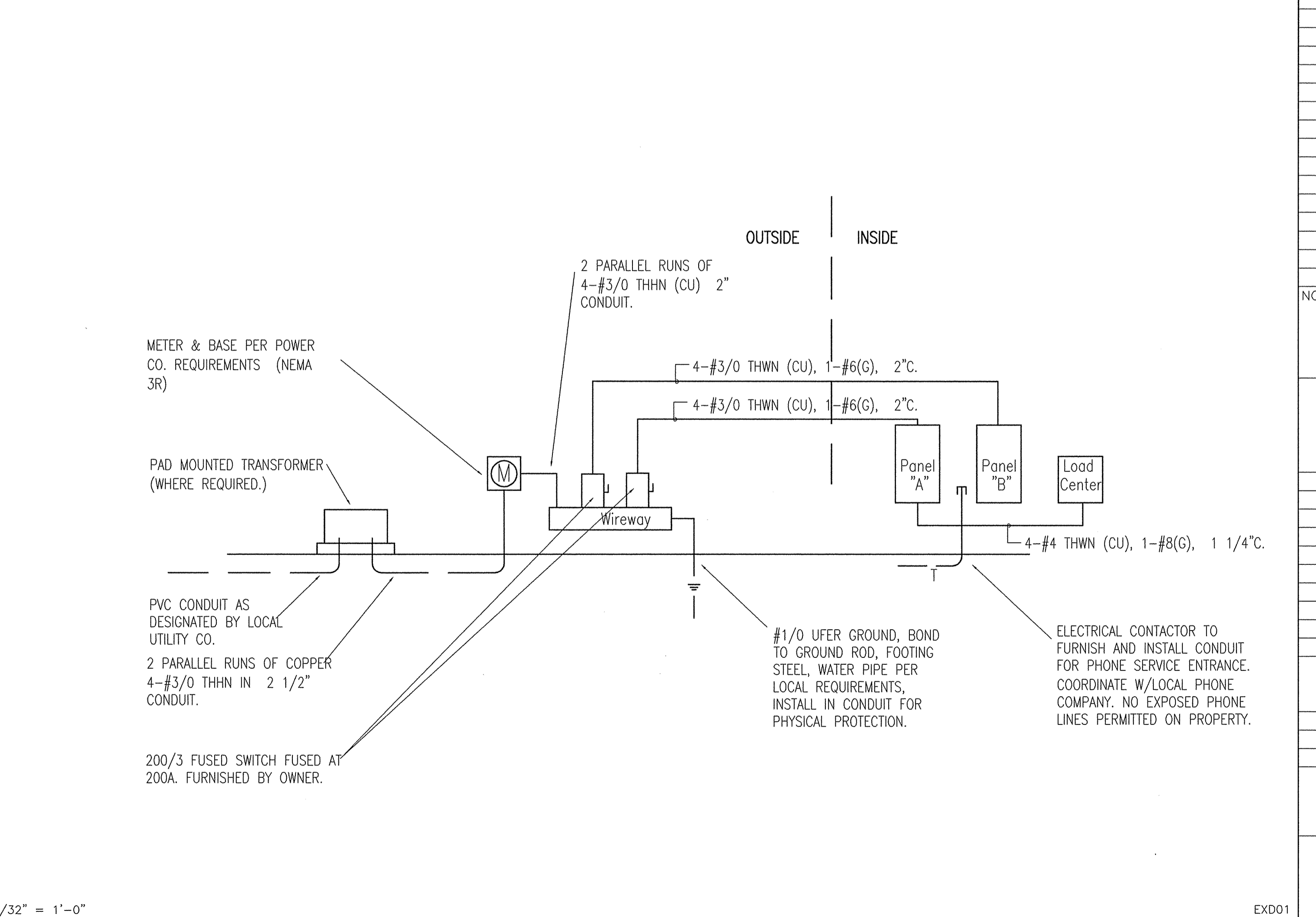


© COPYRIGHT 2007



5/8" = 1'-0"
 1 ALARM / PHONE BOARD REQUIREMENTS EXS01



3/32" = 1'-0"
 2 SCHEMATIC ONE LINE - ELECTRICAL SERVICE EXD01

7N2 PANEL - A LIGHTING MAIN LUGS ONLY														
VOLTS: 120/208 V.		MOUNTED: FLUSH										BUSSING: 225 AMPS		
PHASE: 3Ø		FEEDER: 200 AMPS										AIC RATING: 10,000 AIC		
WIRE: 4W														
LOAD	A	B	C	BKR	CK	CK	BKR	A	B	C	LOAD	A	B	C
FLUORESCENT LIGHTS	1526			20/1	1	2	20/1	356			FRONT WALL SIGN			
FLUORESCENT LIGHTS		1526			3	4			1635		FLUORESCENT LIGHTS			
FLUORESCENT LIGHTS			1744		5	6					FLUORESCENT LIGHTS			
FLUORESCENT LIGHTS	1580				7	8		872		1690	FLUORESCENT LIGHTS			
EXIT / EMERGENCY LIGHTS		75			9	10					SPACE			
FLUORESCENT LIGHTS			654		11	12					SPACE			
EXTERIOR BUILDING LIGHTS	220				13	14					SPACE			
SITE LIGHTS		209			15	16	20/1		256		SIDE WALL SIGN			
SITE LIGHTS	209		209		17	18	20/1			1224	PYLON SIGN			
SITE LIGHTS		209			19	20					SPACE			
SPACE					21	22	20/1		472		RESTROOM LIGHTS/FAN			
SPACE					23	24					SPACE			
WATER HEATER	1500			20/1	25	26					SPACE			
SPACE					27	28					SPACE			
SPACE					29	30					SPACE			
SPACE					31	32					SPACE			
SPACE					33	34					SPACE			
SPACE					35	36					SPACE			
SPACE					37	38	60/3	5568			LOAD CENTER			
SPACE					39	40			6188					
SPACE					41	42				5560				
LIGHTING TOTAL	3535	2019	2607					1228	2363	2914	LOADING TOTAL			
POWER TOTAL	1500	0	0					5568	6188	5560	POWER TOTAL			
PANEL TOTAL	5035	2019	2607					7052	8551	8474	PANEL TOTAL			

NOTES:
 AØ LIGHTING 4763 x 1.25 5954 +POWER 7068 TOTAL 13022 /120 = 108.5 A
 BØ LIGHTING 4382 x 1.25 5478 +POWER 6188 TOTAL 11666 /120 = 97.2 A
 CØ LIGHTING 5521 x 1.25 6901 +POWER 5560 TOTAL 12461 /120 = 103.8 A

7N2 PANEL - B POWER MAIN LUGS ONLY														
VOLTS: 120/208 V.		MOUNTED: FLUSH										BUSSING: 225 AMPS		
PHASE: 3Ø		FEEDER: 200 AMPS										AIC RATING: 10,000 AIC		
WIRE: 4W														
LOAD	A	B	C	BKR	CK	CK	BKR	A	B	C	LOAD	A	B	C
RTU-1	4848			50/3	1	2	50/3	4848			RTU-2			
7.5 ton		4848			3	4			4848		7.5 ton			
SPACE			4848		5	6				4848	SPACE			
SPACE					7	8					SPACE			
SPACE					9	10					SPACE			
RTU & EXT. RECEPT.	540			20/1	11	12					SPACE			
BATTERY CHARGER		1487			13	14					SPACE			
BATTERY CHARGER			1487		15	16					SPACE			
BATTERY CHARGER	1487				17	18					SPACE			
BATTERY CHARGER		1487			19	20	20/1	1500			H.P. MINI-TUNE			
BATTERY CHARGER			1487		21	22					SPACE			
ALC PANEL	480				23	24	20/1			800	TESTER ACCESSORIES			
SPACE					25	26		360			DRINKING FOUNTAIN			
BREAK ROOM REFRIG.			1500	20/1	27	28			360		LANDSCAPE CONTROL			
SPACE					29	30			900		GEN. RECEPT. (SALES)			
SPACE					31	32		1380			DRINK MACHINE			
SPACE					33	34					SPACE			
SPACE					35	36					SPACE			
SPACE					37	38					SPACE			
SPACE					39	40					SPACE			
SPACE					41	42					SPACE			
LIGHTING TOTAL	0	0	0					0	0	0	LOADING TOTAL			
POWER TOTAL	7355	7822	9322					8088	5208	6548	POWER TOTAL			
PANEL TOTAL	7355	7822	9322					8088	5208	6548	PANEL TOTAL			

NOTES:
 INSERT 20 AMP HIGH MAGNETIC BREAKER IN CIRCUIT B-20. BREAKER WILL COME WITH A YELLOW STICKER TO BE LEFT IN PLACE.
 AØ LIGHTING 0 x 1.25 0 +POWER 15443 TOTAL 15443 /120 = 128.7 A
 BØ LIGHTING 0 x 1.25 0 +POWER 13030 TOTAL 13030 /120 = 108.6 A
 CØ LIGHTING 0 x 1.25 0 +POWER 15870 TOTAL 15870 /120 = 132.3 A

7N2 LOAD CENTER ELECTRONICS MAIN LUGS ONLY														
VOLTS: 120/208 V.		MOUNTED: FLUSH										BUSSING: 100 AMPS		
PHASE: 3Ø		FEEDER: 100 AMPS										AIC RATING: 10,000 AIC		
WIRE: 4W														
LOAD	A	B	C	BKR	CK	CK	BKR	A	B	C	LOAD	A	B	C
CK. OUT REG. & PRN	1920			20/1	1	2					SPACE			
SPACE					3	4	20/1		1920		OFFICE TRAINING			
CCTV MONITOR			300	20/1	5	6					OFFICE IT EQUIPMENT			
POD #1	1920				7	8		928			EAS POST & ALARM			
EAS POST & ALARM		928			9	10			1820		OFFICE UPS			
POD #2			800	20/1	11	12				1820	COMMERCIAL			
SPACE					13	14		800			COMMERCIAL			
ALARM		720		20/1	15	16			800		COMMERCIAL			
TEL. CO.			720		17	18					SPACE			
SPACE					19	20					SPACE			
SPACE					21	22					SPACE			
SPACE					23	24					SPACE			
LIGHTING TOTAL											LOADING TOTAL			
POWER TOTAL	3840	1648	1820					1728	4540	3740	POWER TOTAL			
PANEL TOTAL	3840	1648	1820					1728	4540	3740	PANEL TOTAL			

LOAD TABULATION
 TOTAL LOAD AØ = PANEL "A" 108.5 A + PANEL "B" 128.7 A, TOTAL = 237.2 A
 TOTAL LOAD BØ = PANEL "A" 97.2 A + PANEL "B" 108.6 A, TOTAL = 205.8 A
 TOTAL LOAD CØ = PANEL "A" 103.8 A + PANEL "B" 132.3 A, TOTAL = 236.1 A
 SERVICE SIZE LARGEST PHASE = 237.2 + 25% OF LARGEST MOTOR (.25 x 20.5A = 5.1A) = 242.3 A

REVISIONS
 1 REV1
 2 REV2
 3 REV3
 4 REV4
 5 REV5
 6 REV6

AutoZone Store No. 3879
 1207 FOREST AVE
 PORTLAND ME 04103

ENGINEER: DANNY E. DOSS P.E.
 132 Kelley Drive
 Rogers, Arkansas 72756
 TEL: (479) 631-1712 FAX: (479) 631-1854
 For Bidding & Contractor Information Contact:
 McGraw - Hill Construction Tel. 615-884-1017
 www.construction.com

STATE OF ARKANSAS
 PROFESSIONAL ENGINEER
 No. 9421
 LICENSED
 DANNY E. DOSS

04/04/16

7N2-R

E-4