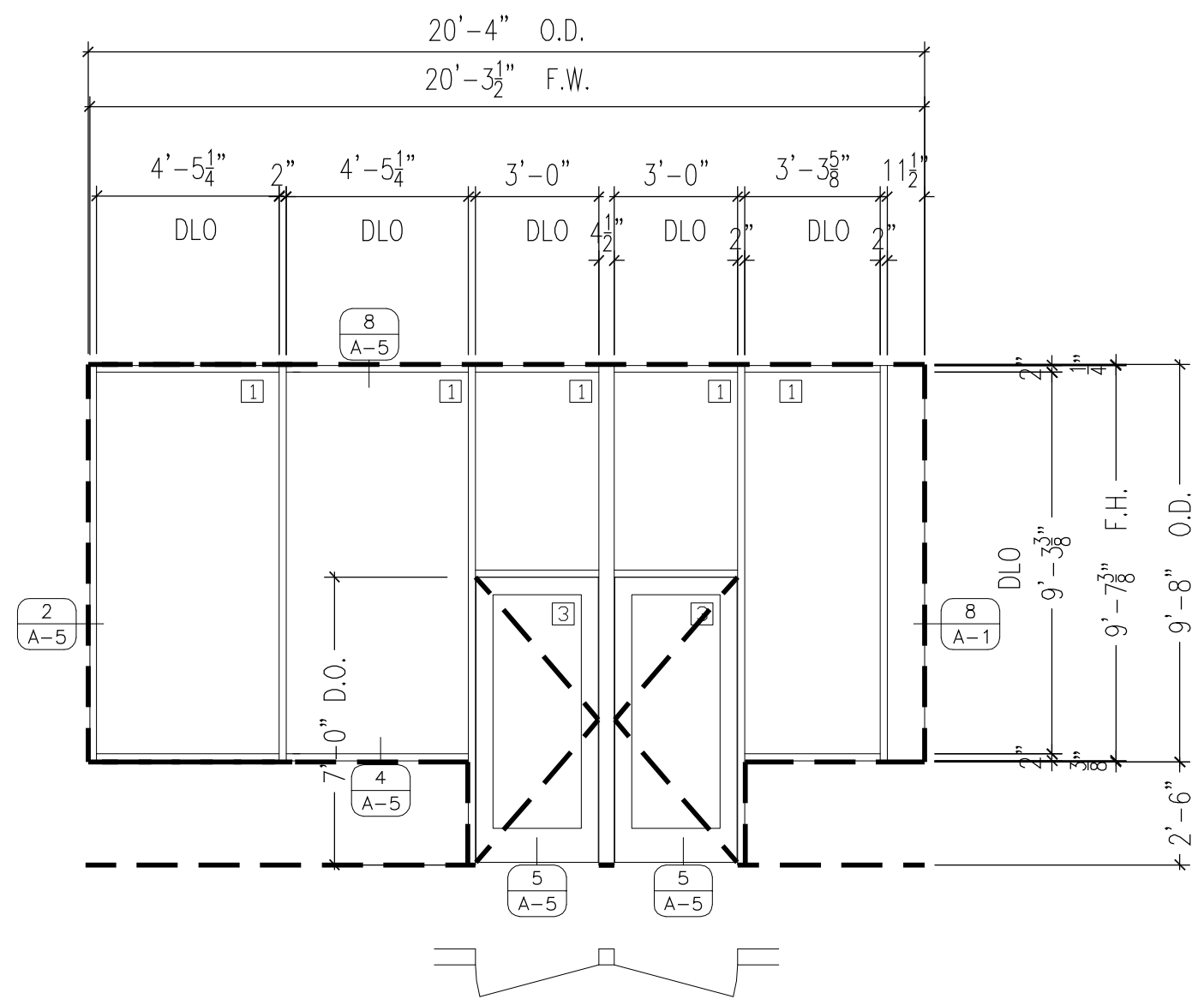
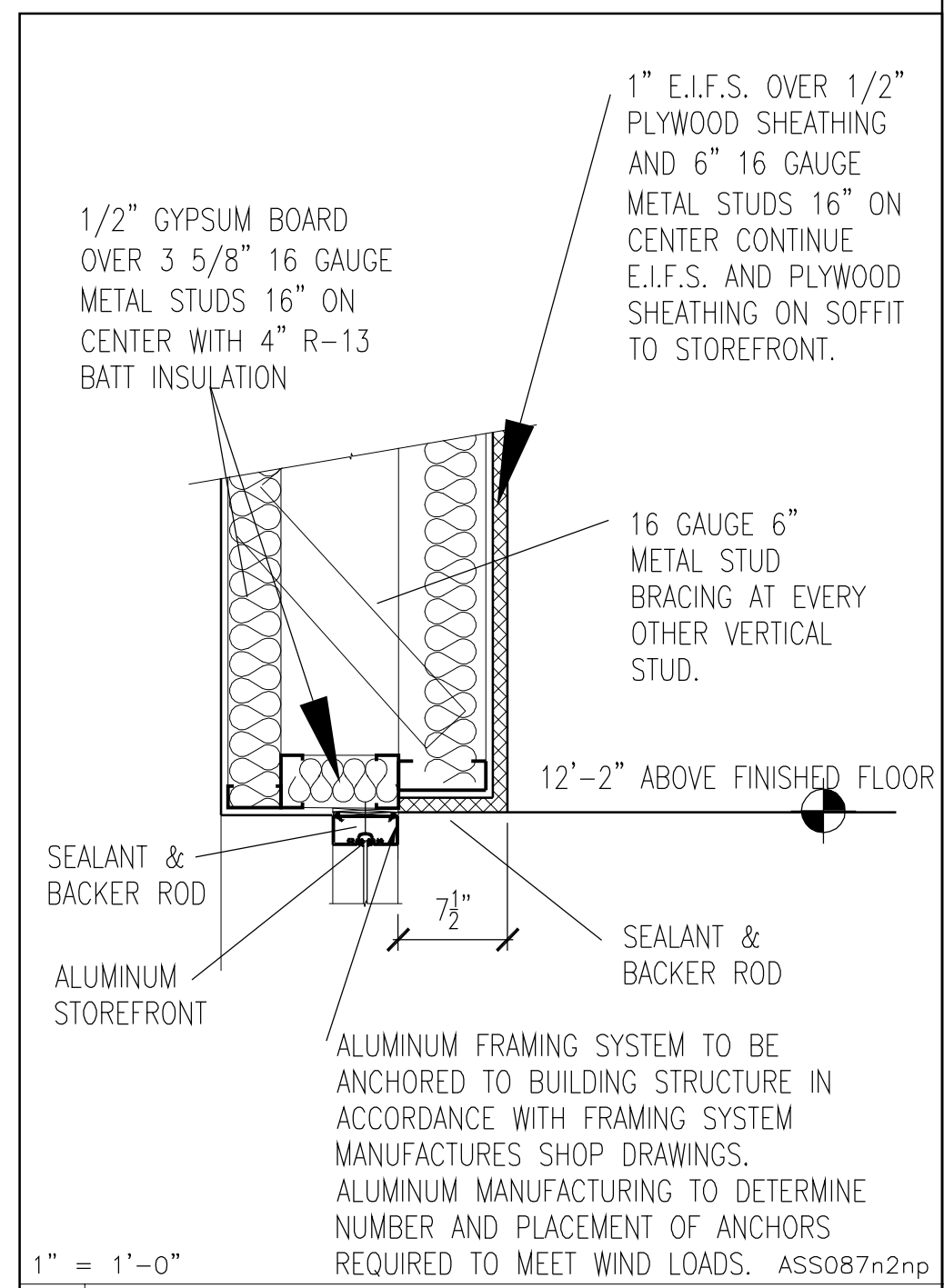


ELEVATION 1



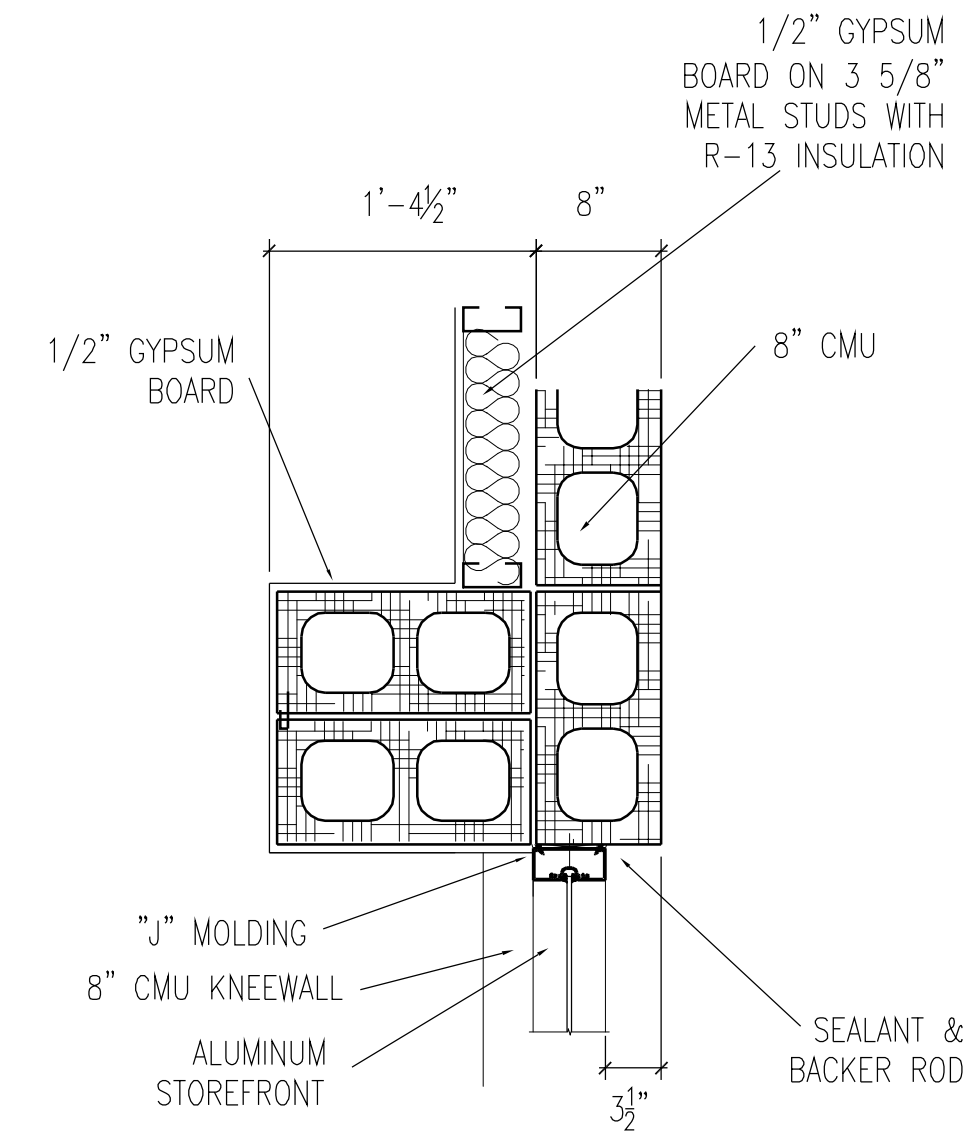
ELEVATION 2



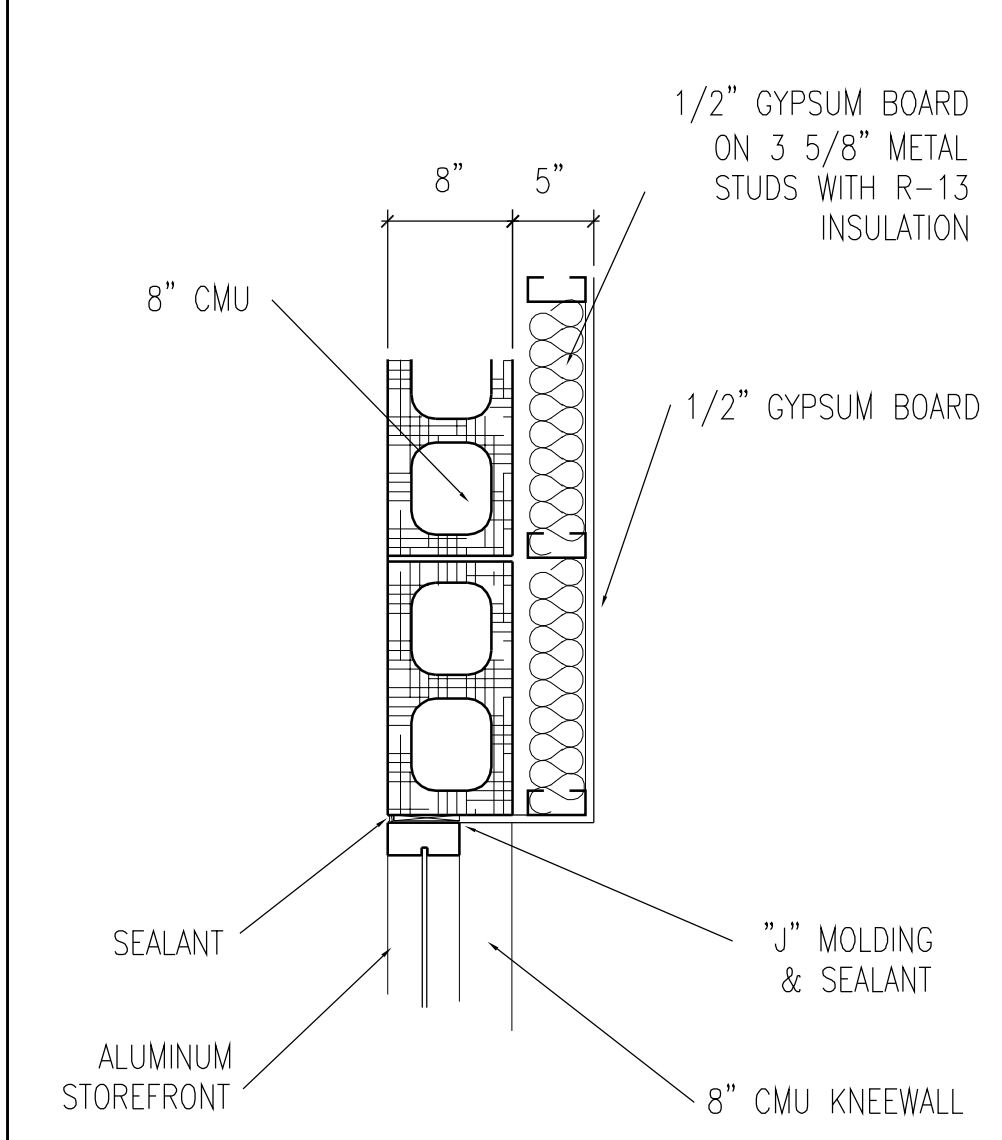
8 HEAD SECTION

- GLAZING SCHEDULE
- 1" INSULATED TEMPERED
 - ▣ 1" INSULATED
 - ▤ 1/4" TEMPERED
- FRAMING / DOOR FINISH
- DOORS - CLEAR ANODIZED
- FRAMING - 2"x 4 1/2" ALUMINUM PAINTED RED PPG UC45282XL w/ CLEAR TOP COAT

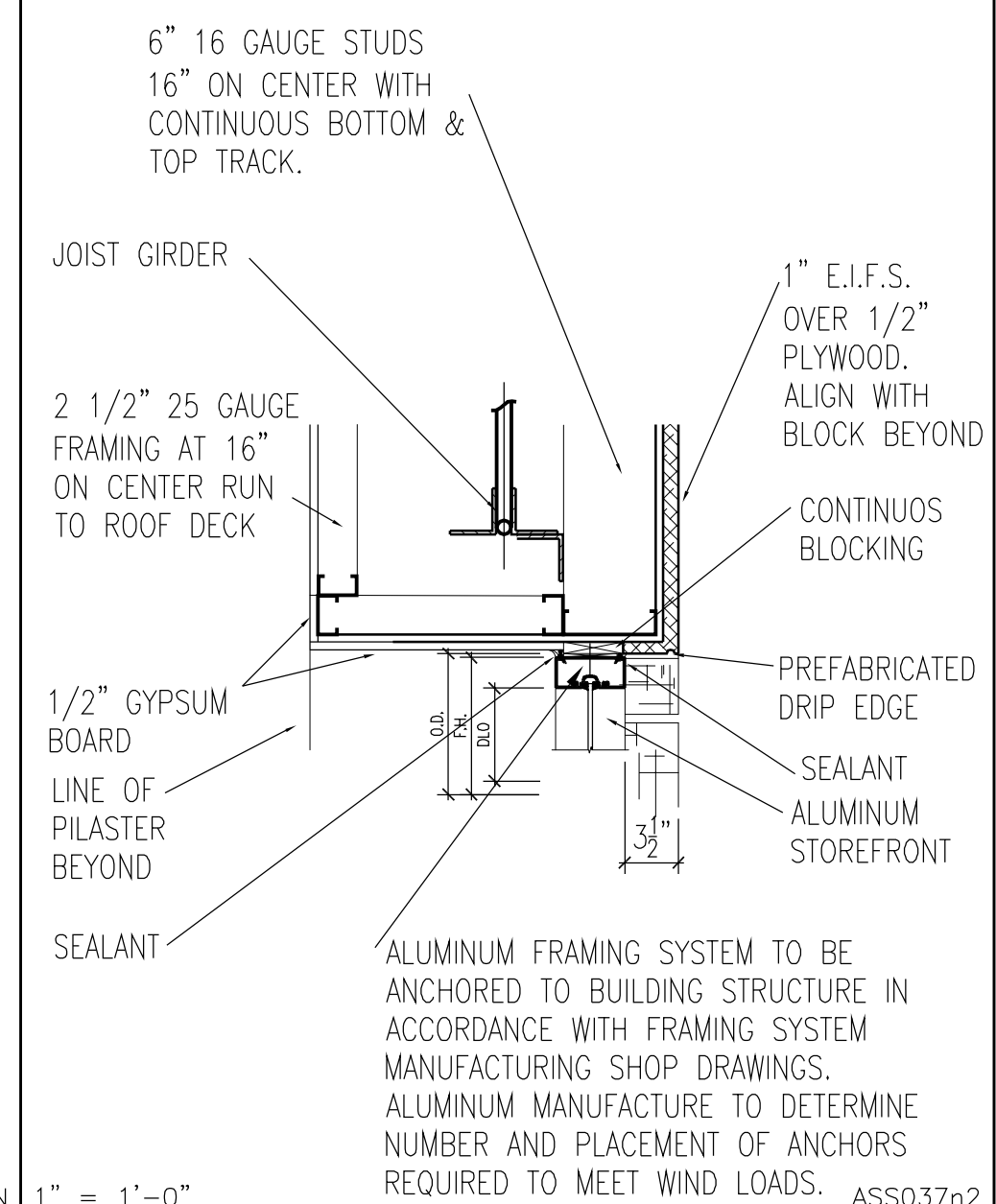
7 STOREFRONT ELEVATION



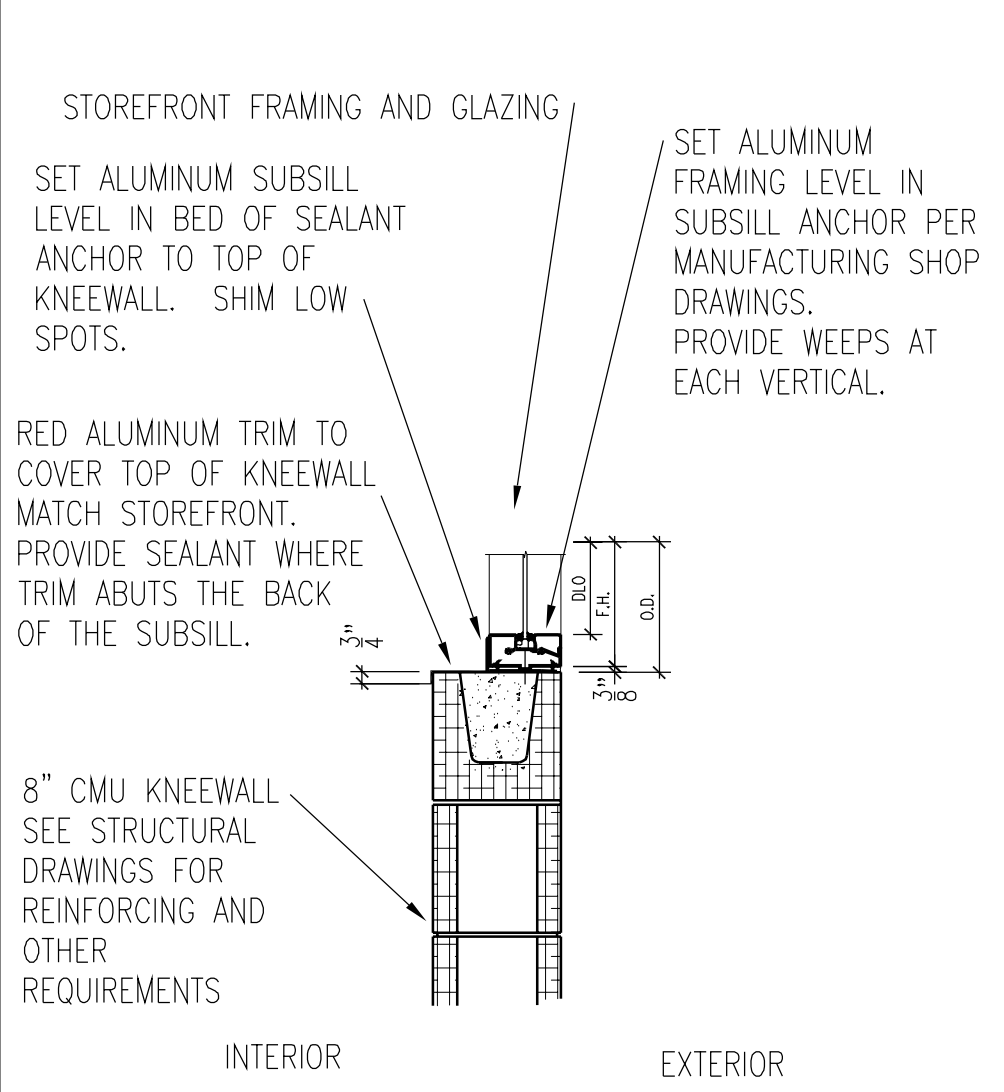
1" = 1'-0" ASS01N



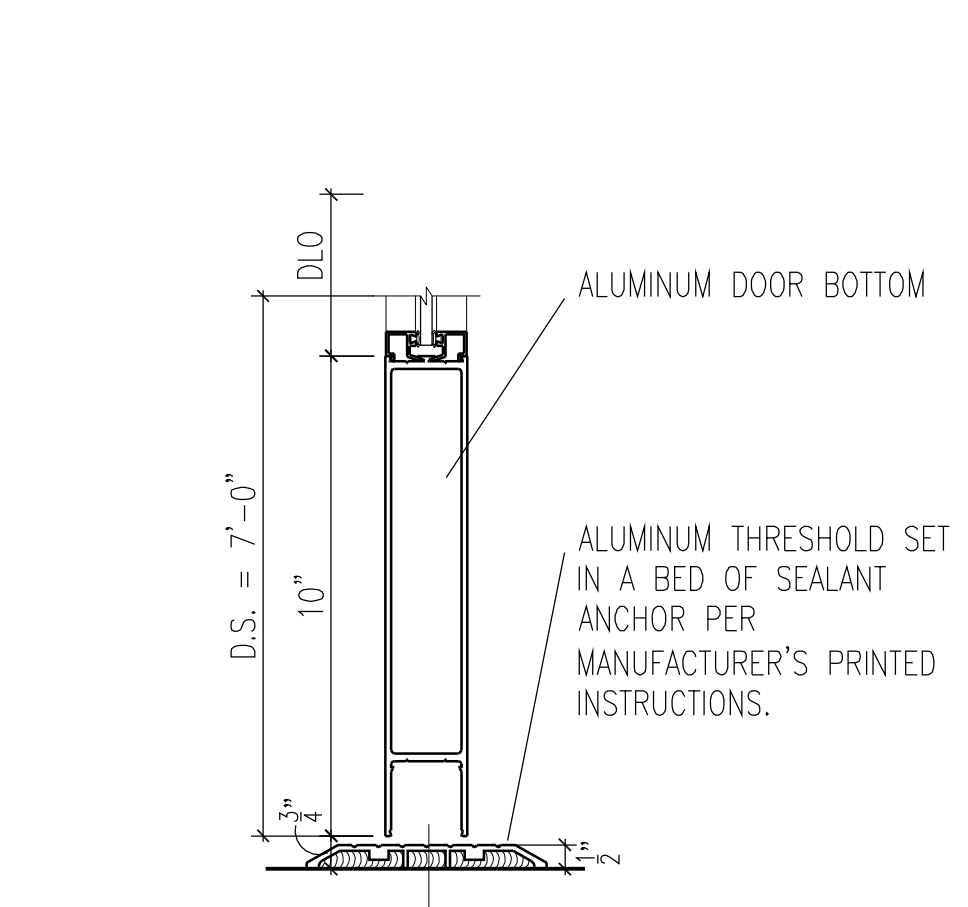
1" = 1'-0" ASS02N



1" = 1'-0" ASS037n2



1" = 1'-0" ASS04



3" = 1'-0" ASS05

- GENERAL NOTES
- STOREFRONT SHALL BE AS MANUFACTURED BY EITHER VISTAWALL ARCHITECTURAL PRODUCTS, YKK, OR U.S. ALUMINUM PRODUCTS AND SHALL BE 2" WIDE BY 4 1/2" DEEP. IMPACT FRAMING SHALL BE 2 1/2" WIDE BY 5" DEEP.
 - CONTRACTOR SHALL FIELD VERIFY ALL DIMENSIONS PRIOR TO BEGINNING FABRICATION OF THE FRAMING MEMBERS OR ORDERING GLASS. INSTALLATION SHALL CONFORM TO ALUMINUM MANUFACTURER'S PRINTED SHOP DRAWINGS AND INSTRUCTIONS.
 - STEEL CLIPS AND ANCHORS SHALL BE HOT ROLLED STEEL A-36 ALLOY WITH A MINIMUM OF ONE COAT OF ZINC CHROMATE PRIMER.
 - ALL FASTENERS SHALL BE ZINC OR CADMIUM PLATED OR NON-MAGNETIC STAINLESS STEEL. ALL FASTENERS IN EXPOSED AREAS ARE TO BE PAINTED TO MATCH FINISH OF ALUMINUM.
 - FINISH OF ALUMINUM CLADDING AND FORMED ALUMINUM SHAPES SHALL MATCH THE FINISH OF ADJACENT EXTRUDED ALUMINUM.
 - MITERING AND NOTCHING OF INTERIOR TRIM IS TO BE DONE IN THE FIELD.

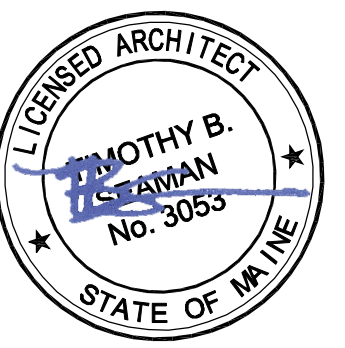
1" = 1'-0" ASS01

REVISIONS

1		
2		
3		
4		
5		
6		

AutoZone Store No. 3879
1207 FOREST AVE
PORTLAND ME 04103
STOREFRONT / VESTIBULE PLAN / DETAILS

ARCHITECTURAL GROUP INTERNATIONAL
15 West Seventh Street, Corvallis, KY 40311
P: 859-261-5400 F: 859-261-5590
www.igt-usa.com
design@igt-usa.com



04/04/16

7N2-R

A-5