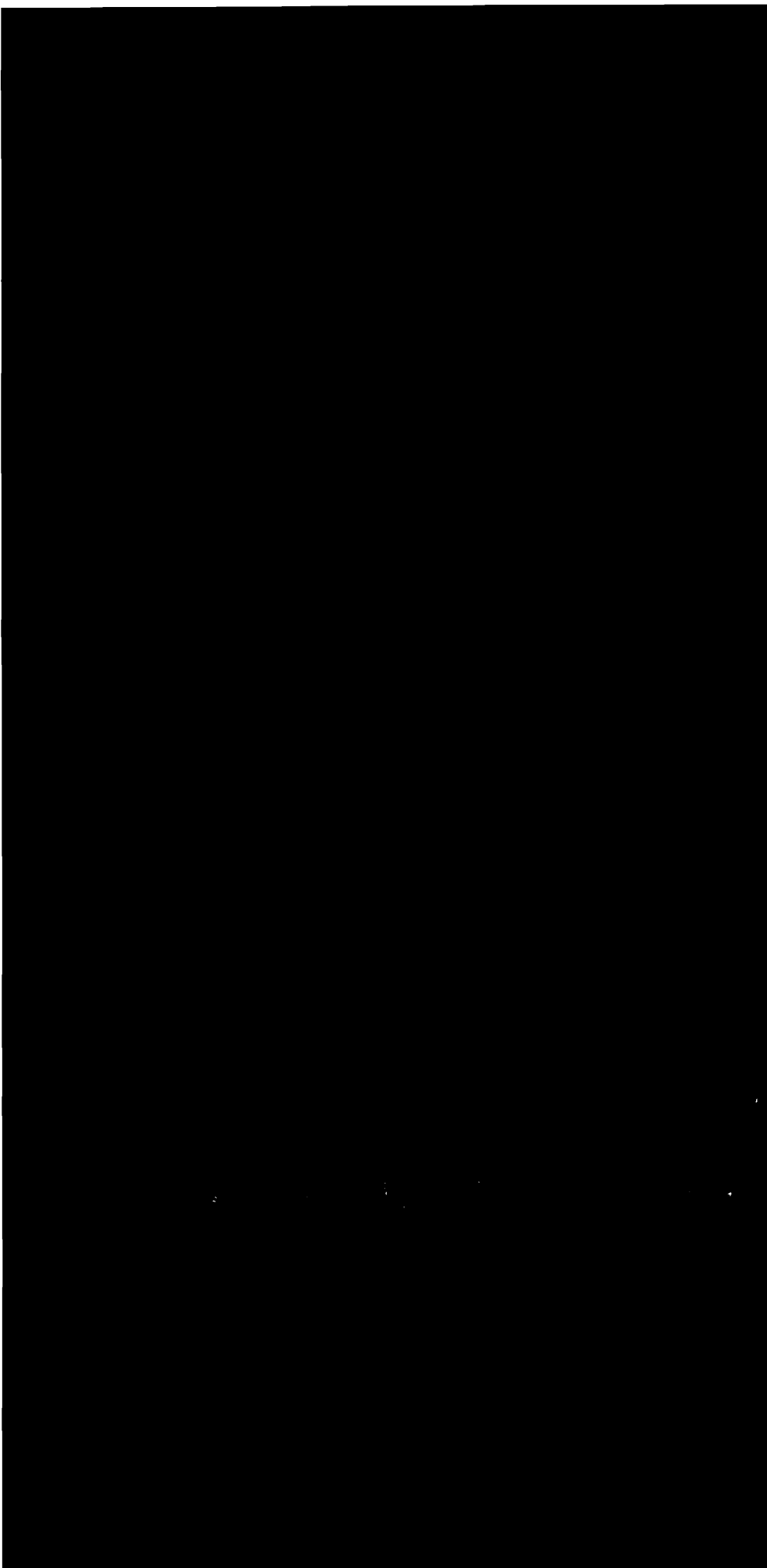


From: Marge Schmuckal
To: Barbara Barhydt ; Scott Hanson
Date: 3/23/2007 12:05:16 PM
Subject: UCU - but wait there's more

Adam Gilsdorf just walked in the door with some revised signage plans. The new signs meet the requirements of the sign ordinance. The free standing signs are less bulky, smaller in size and shorter in height. And the UCU signs on both sides of the building are the regular blue and yellow logo signs and a bit larger but meeting the ordinance.

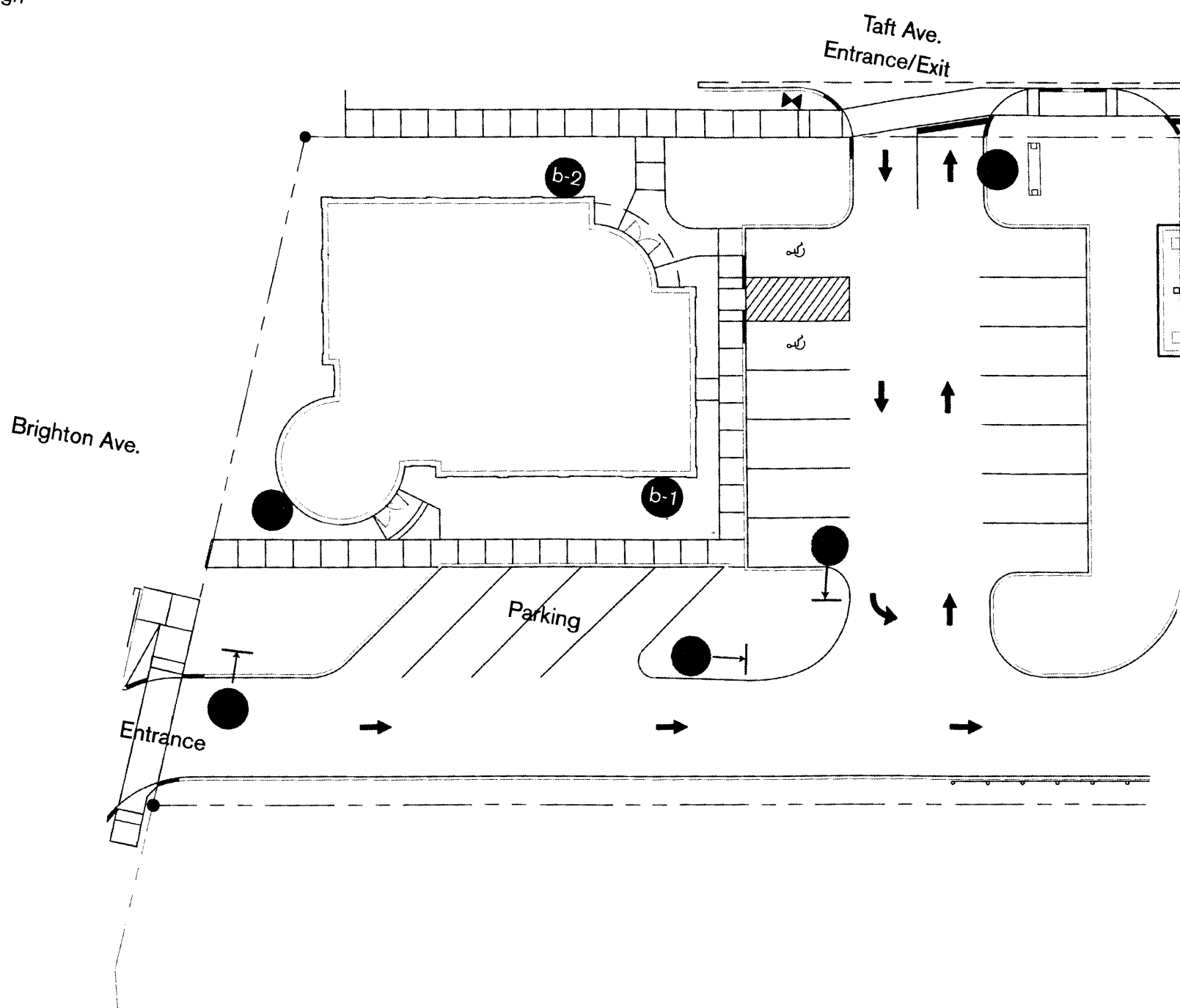
I told Adam to go up stairs and talk to Scott



27

EXTERIOR SIGN KEY

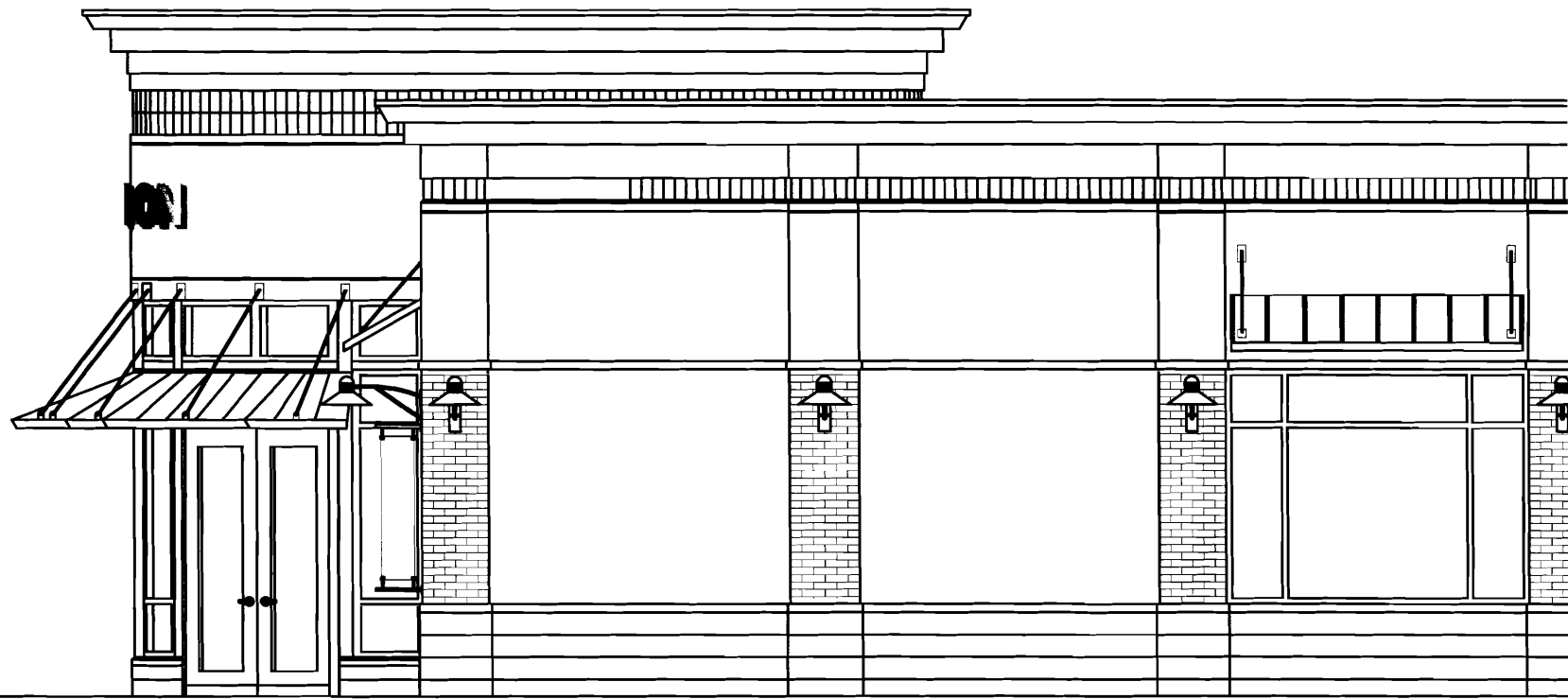
- Branding Primary
- b Branding Secondary
- Directional Signage
- ⊘ "Do Not Enter" Sign
- Traffic Flow



brandpartners

10 Main Street Rochester, NH 03839 Ph: 603.335.1400 Fx: 603.335.4542

University Credit Union
Exterior Signs

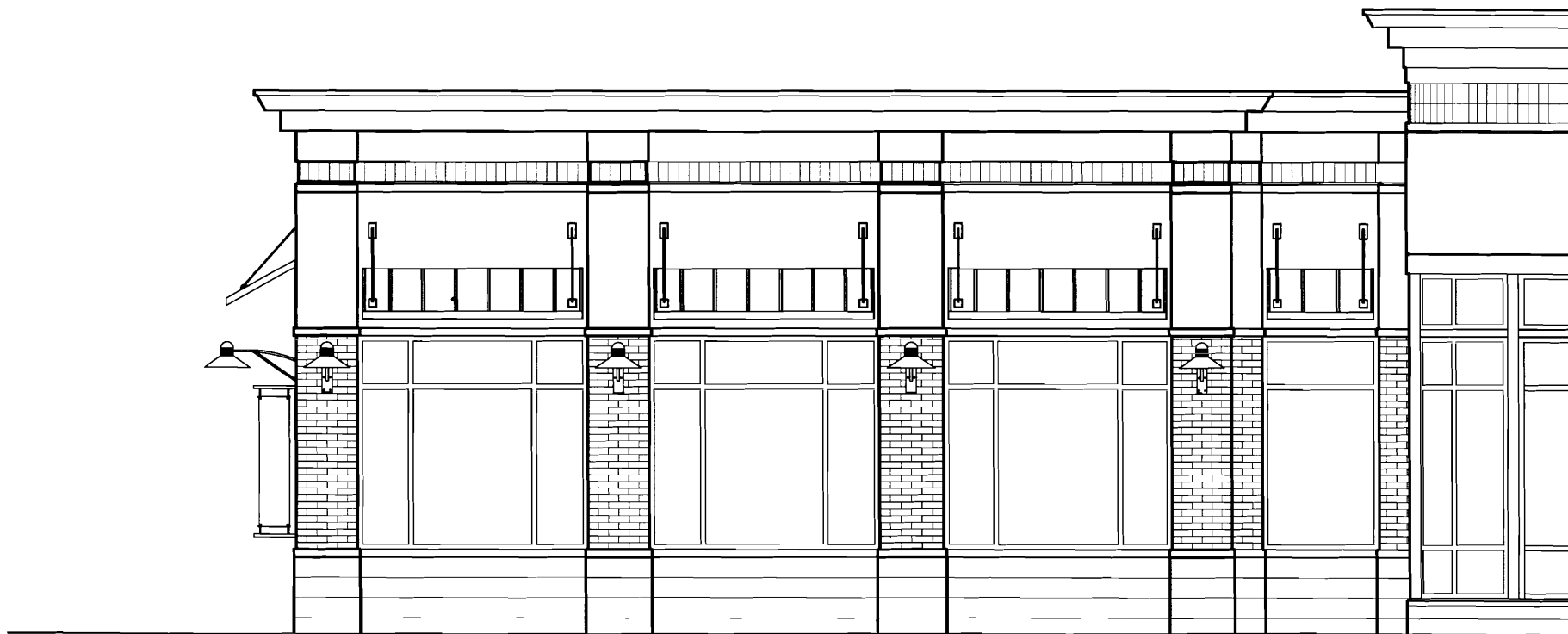


North Elevation

brandpartners

10 Main Street Rochester, NH 03839 Ph: 603.335.1400 Fx: 603.335.4542

University Credit Union
Exterior Signage Concepts



South Elevation

- B-1** RAISED LETTERS
2" back lit brushed aluminum letters
Total sq ft = 28 sq ft



East Elevation

b-2

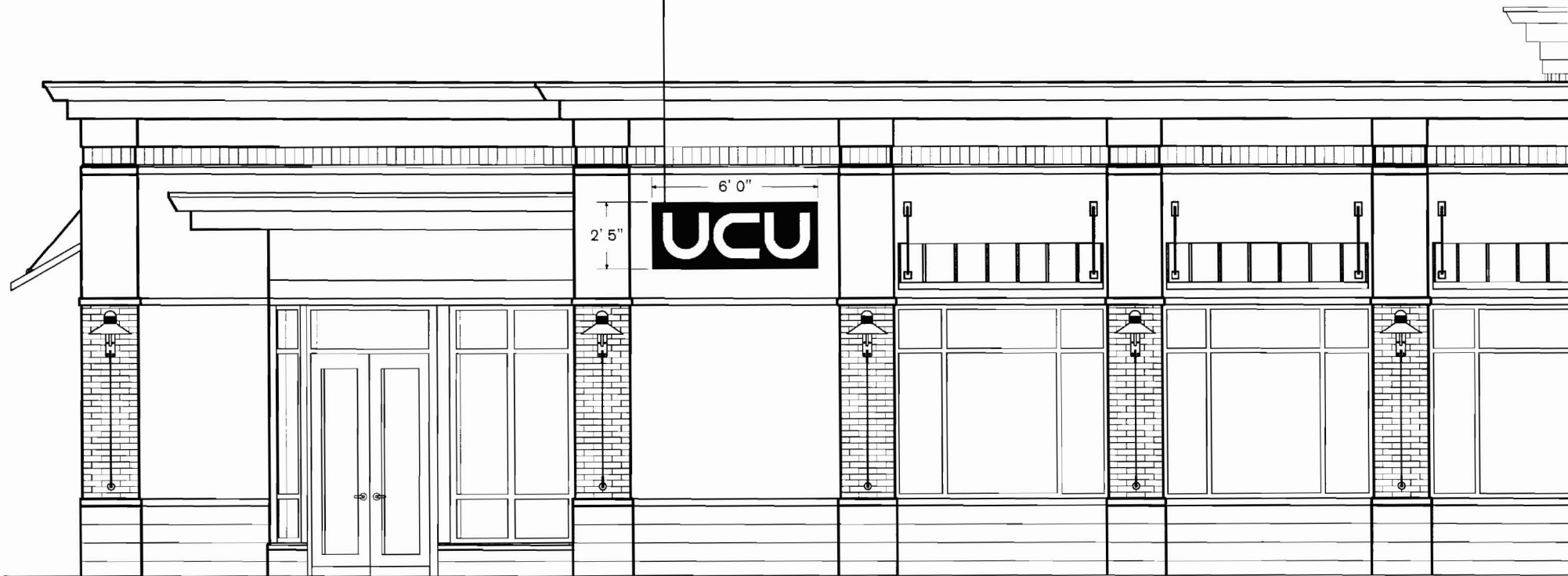
ILLUMINATED RAISED LOGO SIGN

internally lit painted acrylic sign

w/dimensional letters to match PMS

115 & 2748

Total Signage Area = 14.6 sq ft



West Elevation

B-2

Monument/ATM Sign

ARCHED TOP

1.5" thick curved cap painted to match PMS 2748

ARCHED CAP

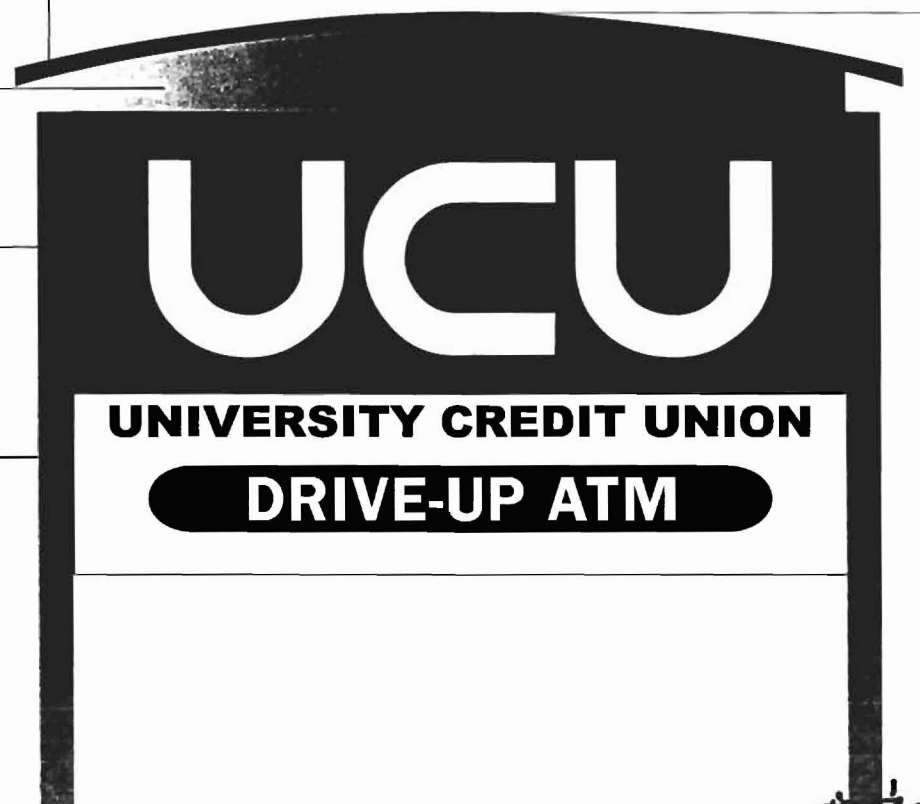
painted satin silver

ILLUMINATED LOGO

2 sided internally lit painted acrylic sign to match PMS 2748 & PMS 115 & white
Total sq ft = 18 sq ft per side

SIDE POSTS

3" sq painted satin silver



Front

5' 11"

brandpartners

10 Main Street Rochester, NH 03839 Ph: 603.335.1400 Fx: 603.335.4542

University Credit Union

Exterior Signage Concepts

ARCHED TOP

1.5" thick curved cap painted to match PMS 2748

ARCHED CAP

painted satin silver

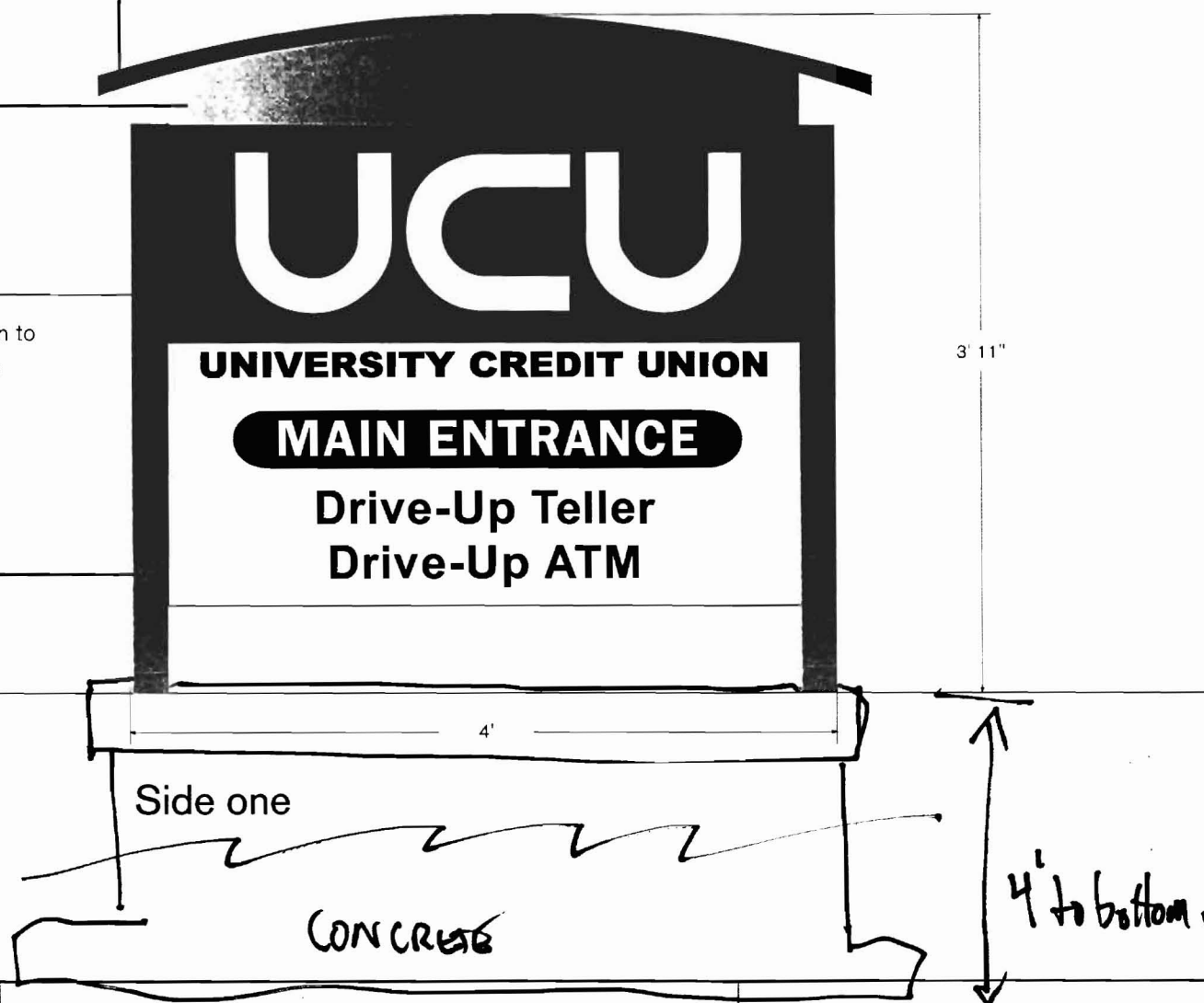
ILLUMINATED LOGO

2 sided internally lit painted acrylic sign to match PMS 2748 & PMS 115 & white

Total sq ft = 10 sq ft per side

SIDE POSTS

2.5" sq painted satin silver





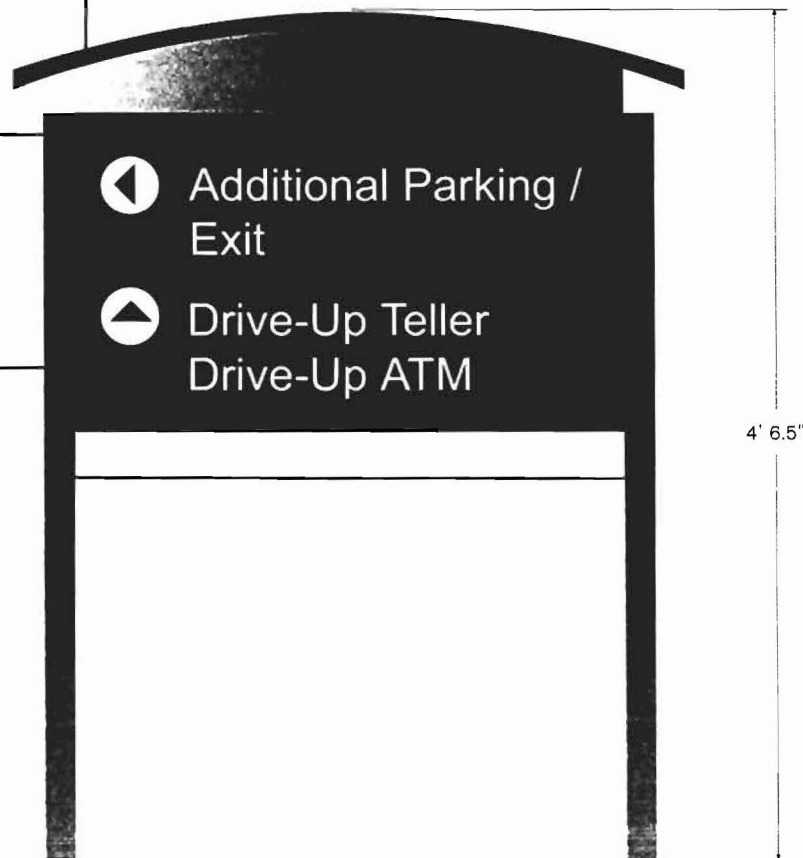
Directional Signage Concept A

Top View

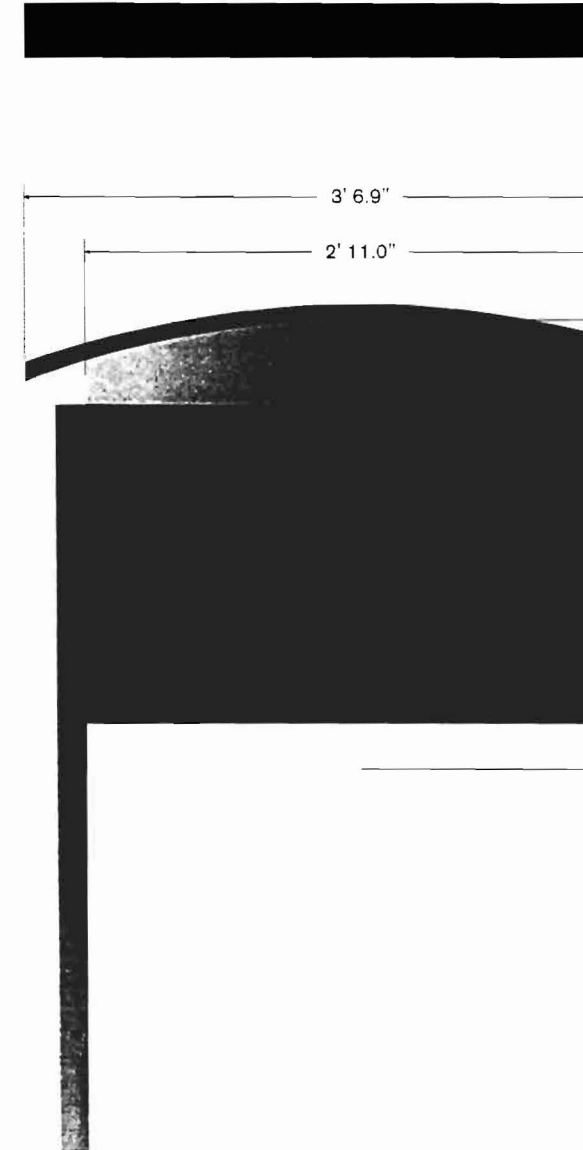
ARCHED TOP
1" thick curved cap painted to match PMS 2748

SIGN PANELS
painted to match satin silver, PMS 2748 & PMS 115 w/white reflective text and graphics

SIDE POSTS
2" sq painted satin silver



Front



Back



Directional Signage Concept A

Top View

ARCHED TOP

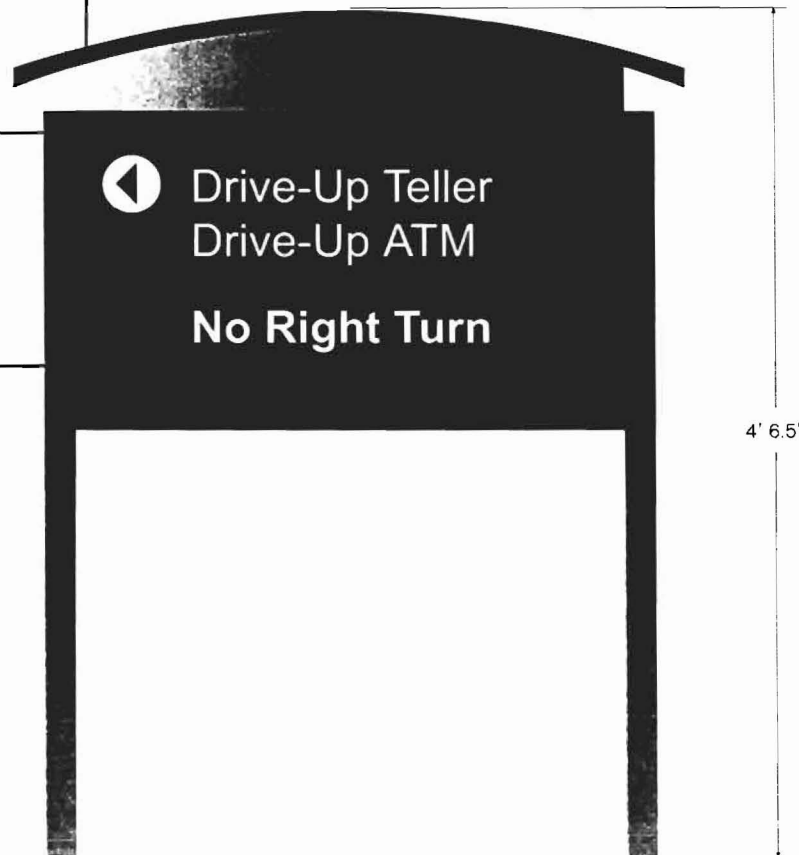
1" thick curved cap painted to match PMS 2748

SIGN PANELS

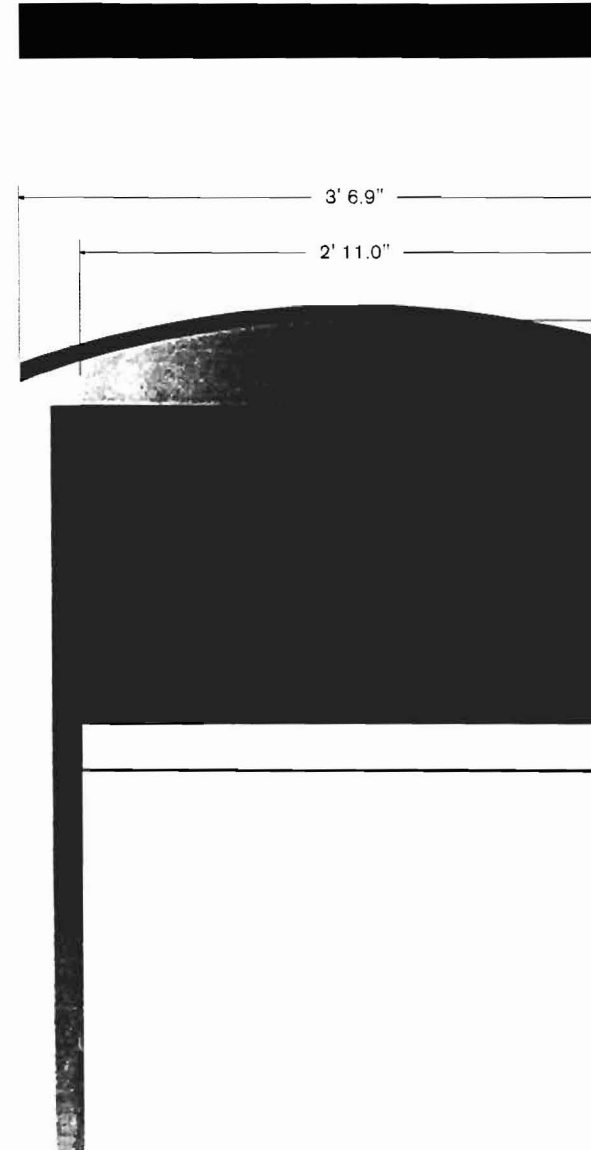
painted to match satin silver, PMS 2748 & PMS 115 w/white reflective text and graphics

SIDE POSTS

2" sq painted satin silver



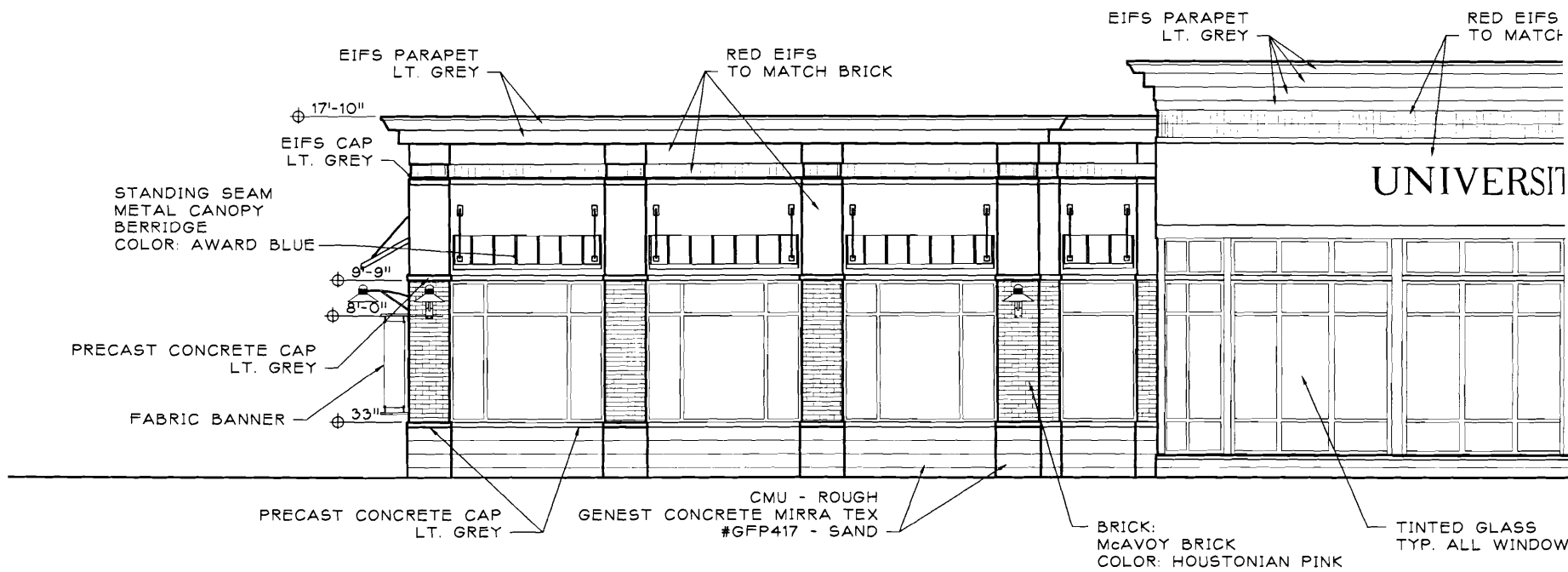
Front



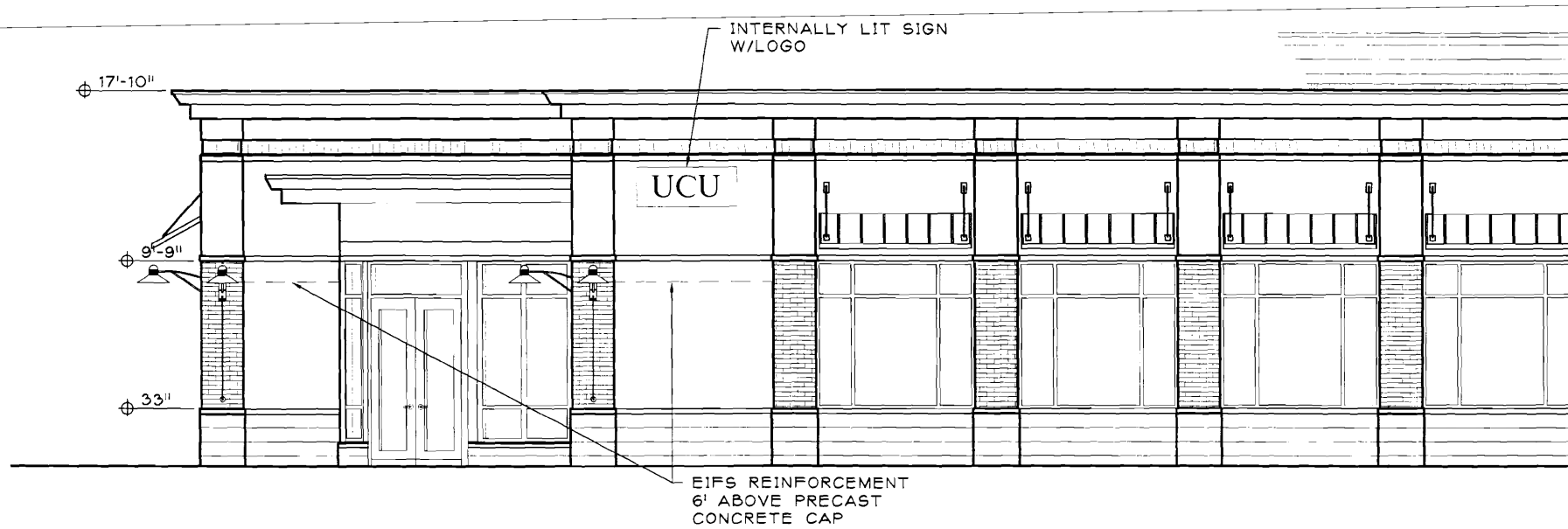
Back

BrandPartners

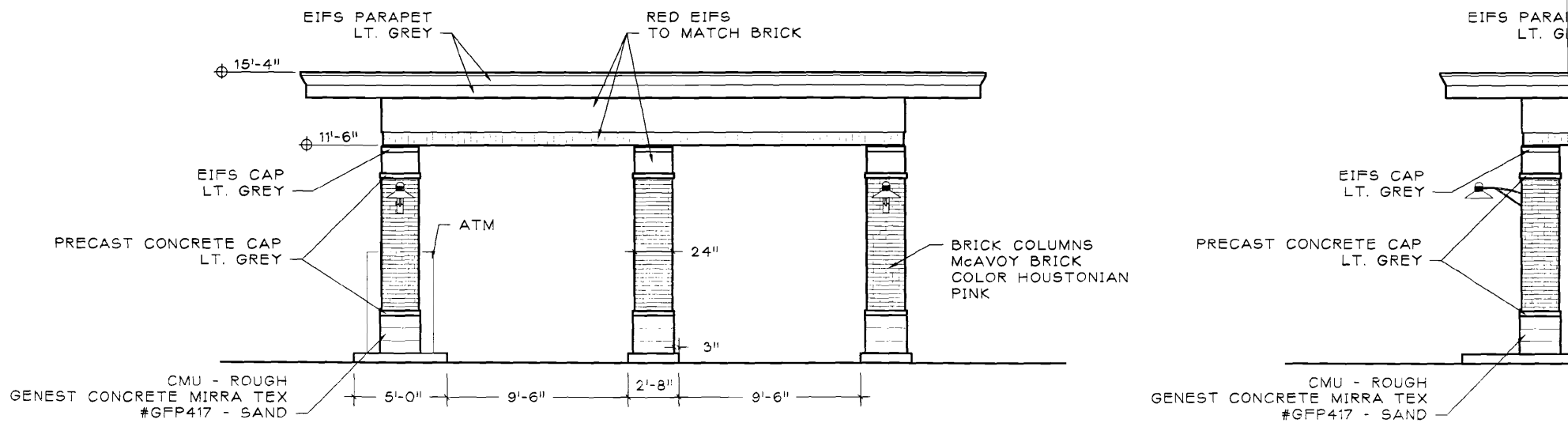
Information, material, and designs in this document are proprietary to and owned by BrandPartners Retail, Inc. and may not be disclosed to any third party, reproduced, posted on a global computer information network, or distributed in any way without the written consent from BrandPartners Retail, Inc.



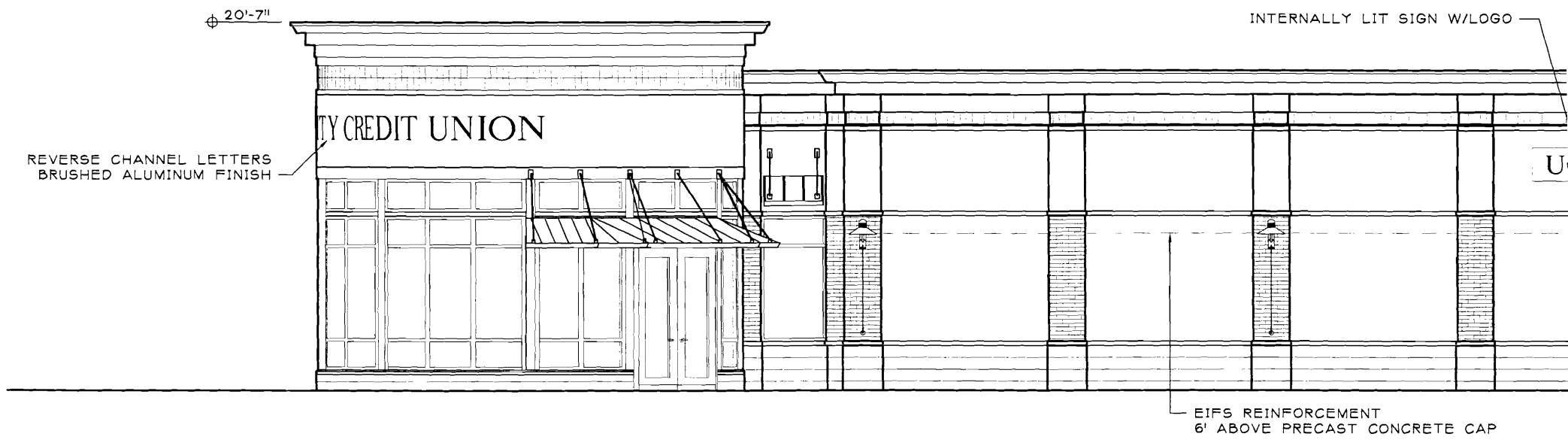
1 SOUTH ELEVATION - BRIGHTON AVE
A2.1 1/8"=1'-0"



1 WEST ELEVATION - TAFT AVE.
 A2.2a 1/8" = 1'-0"



2 DRIVE UP ELEVATION
 A2.2a 1/8" = 1'-0"



1
EAST ELEVATION
A2.3
1/8" = 1'-0"



EIFS REINFORCEMENT
6' ABOVE PRECAST CONCRETE

1
A2.4

NORTH ELEVATION — ENTRANCE

1/8" = 1'-0"

