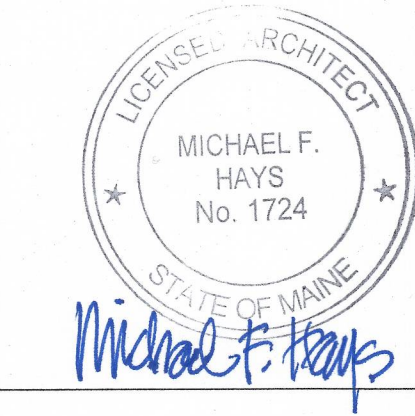
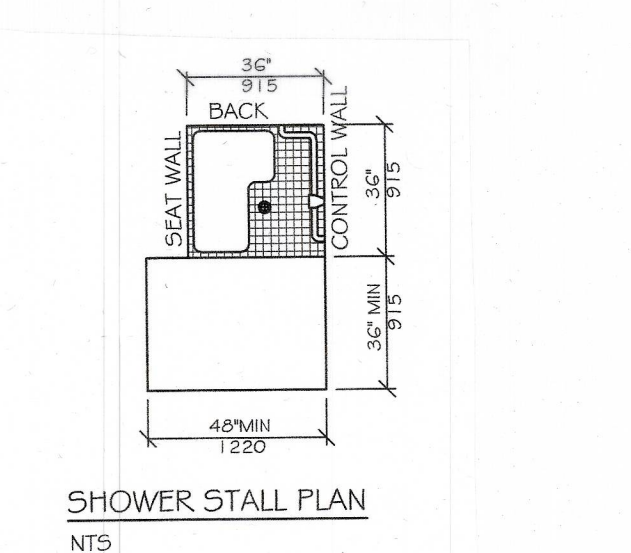
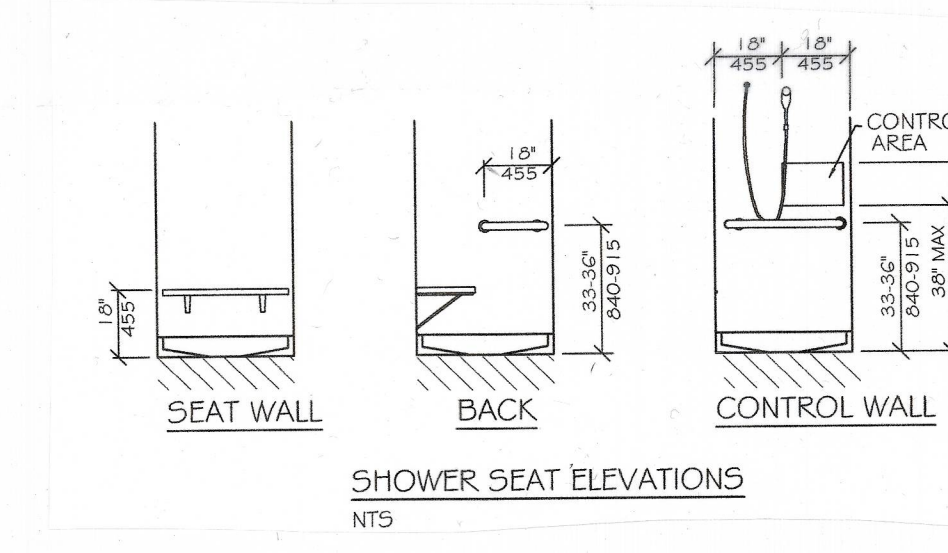
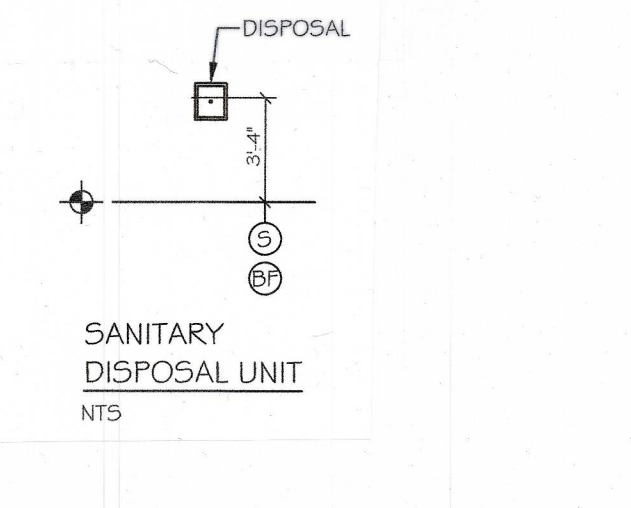
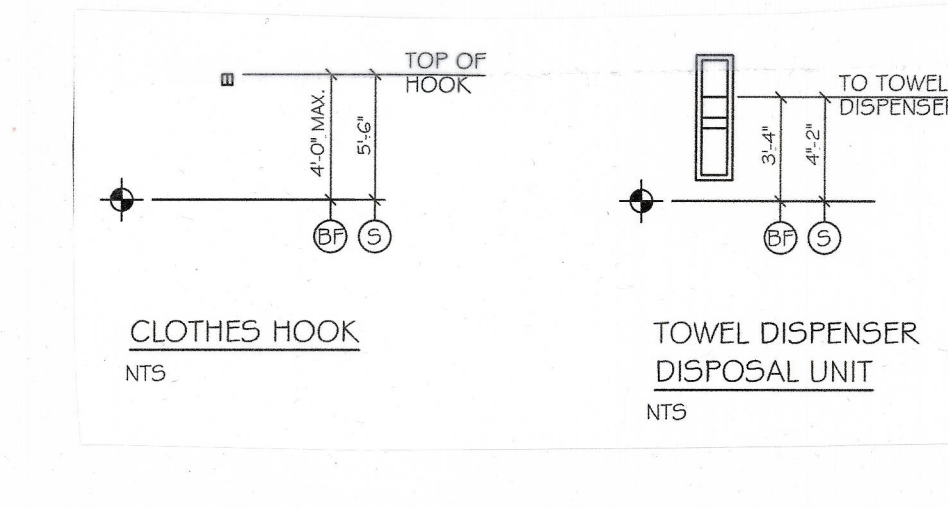
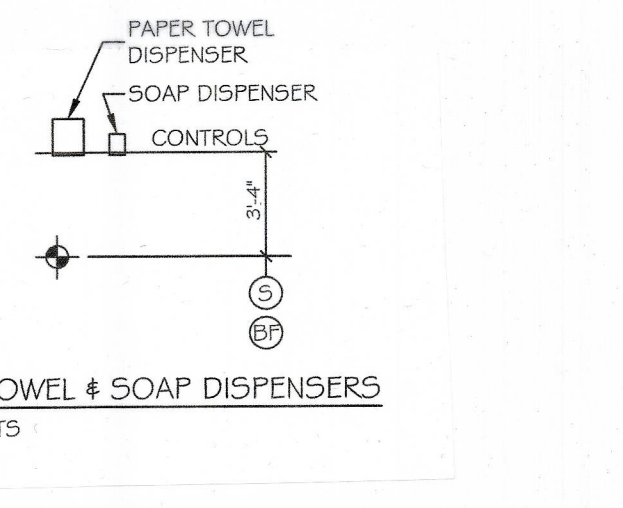
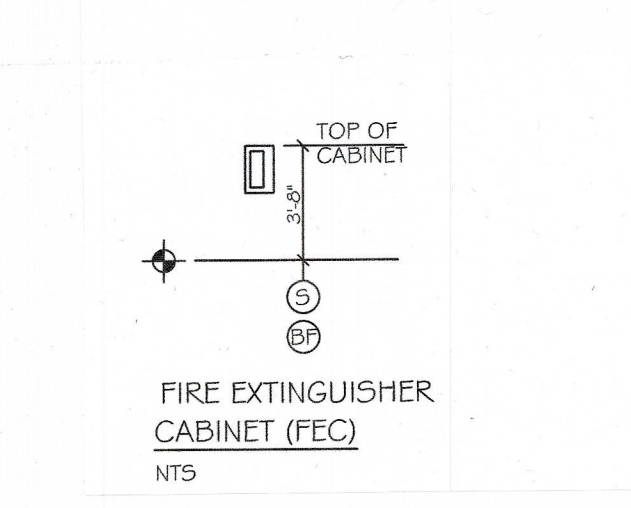
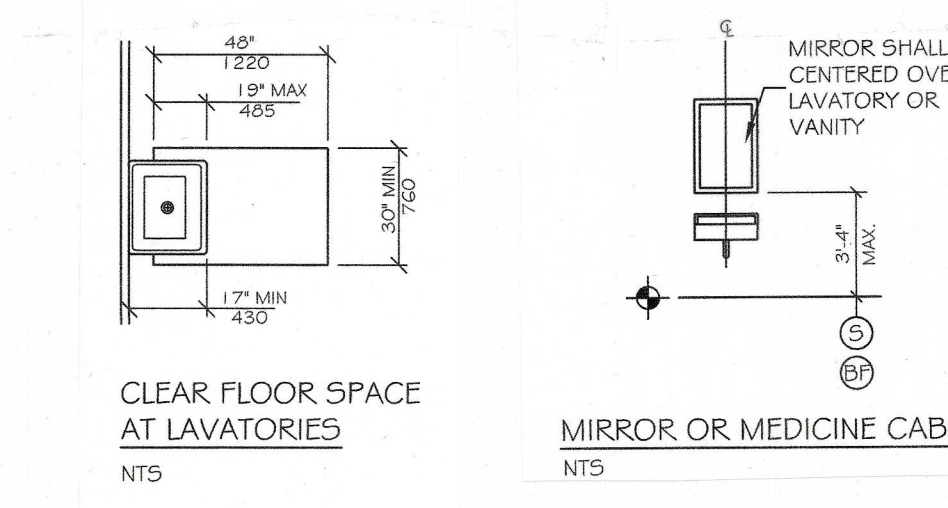
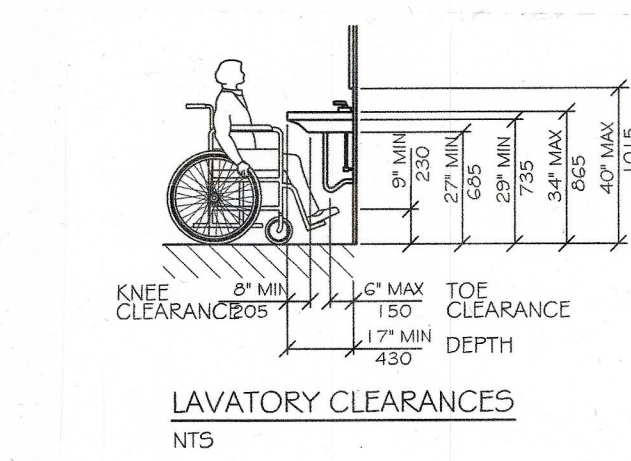
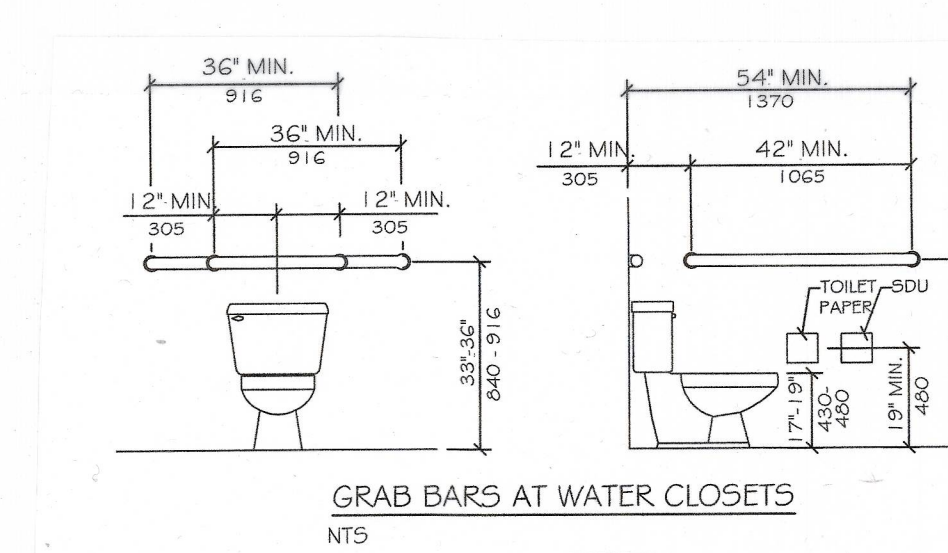
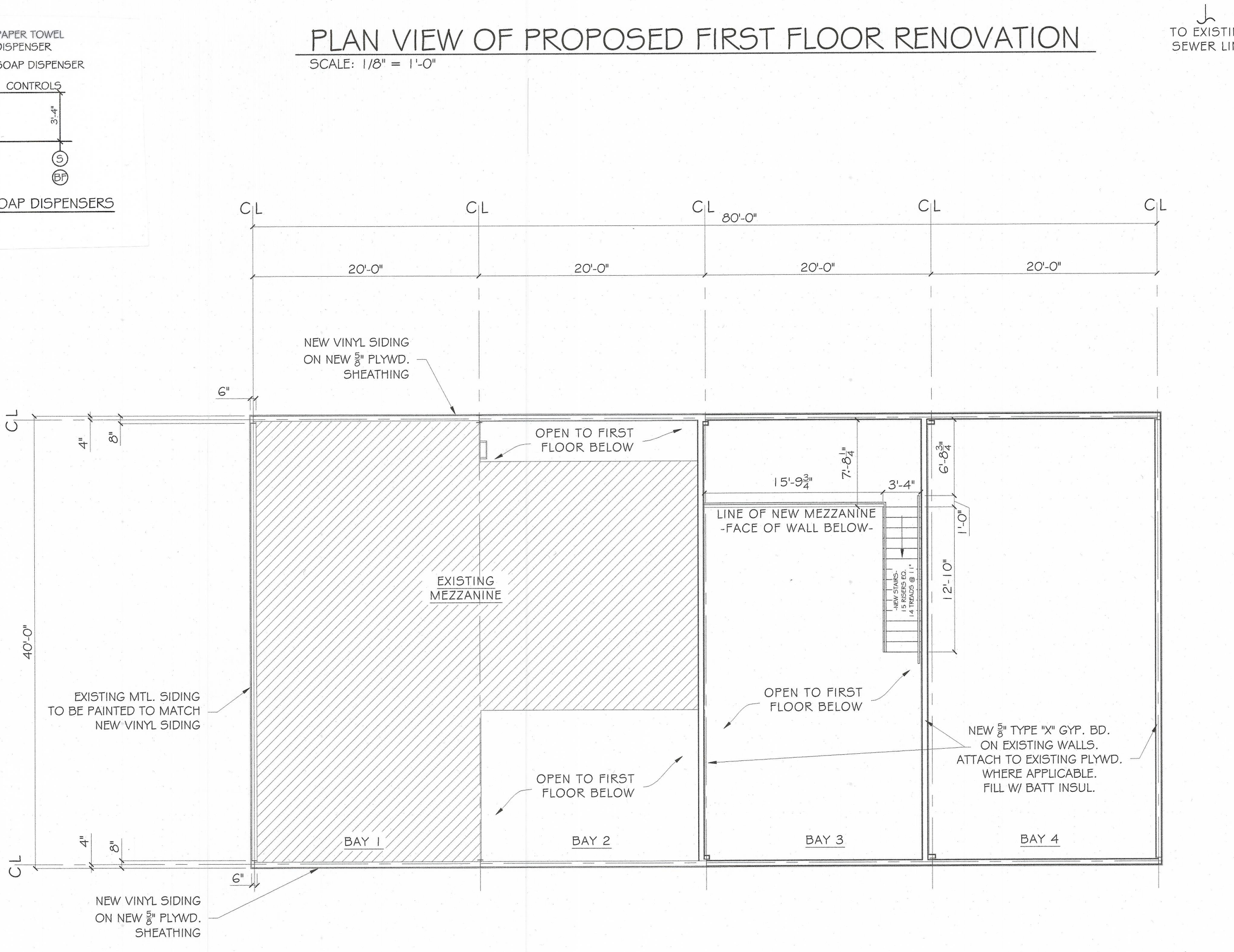
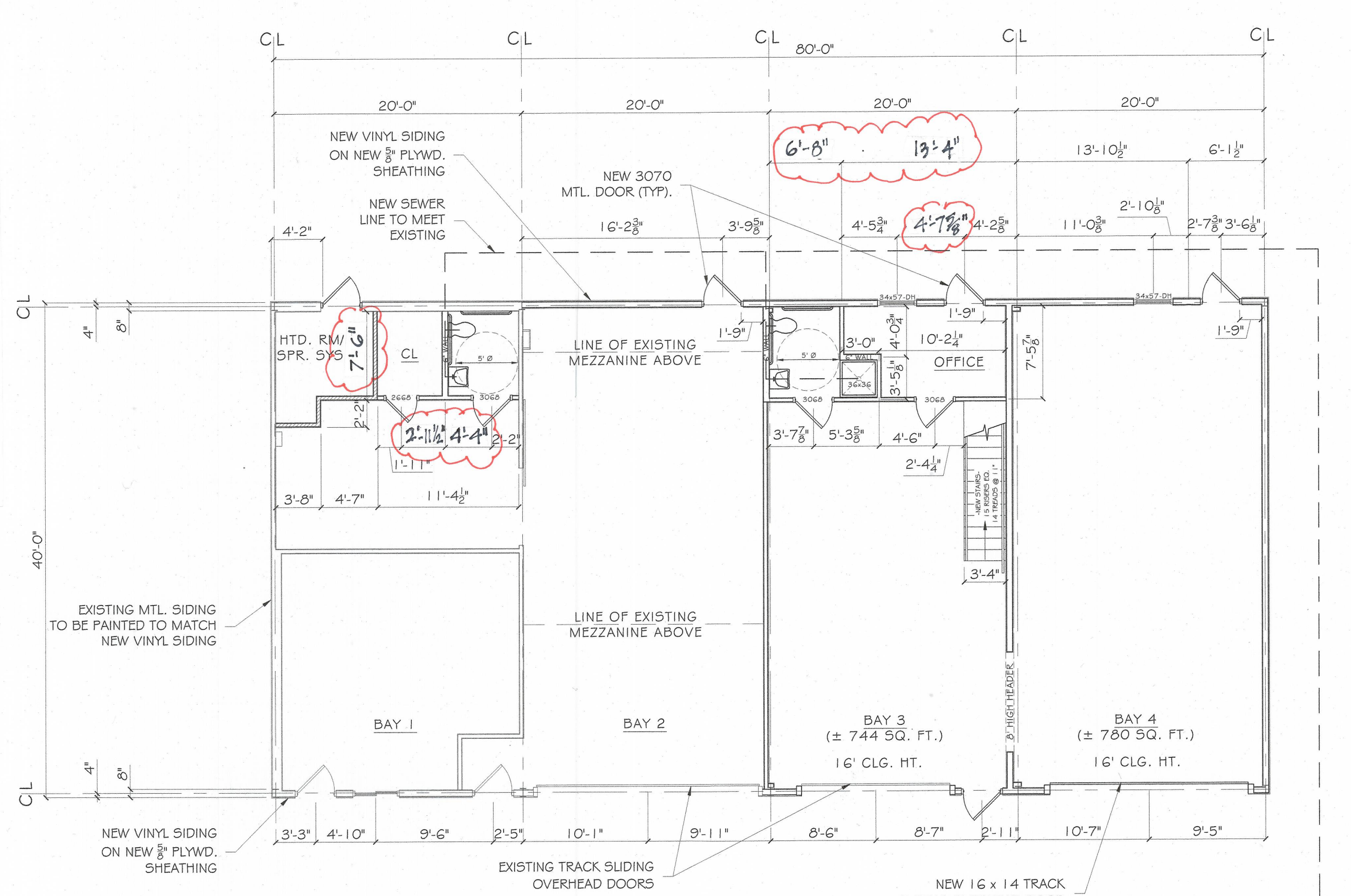


ACCESSIBILITY ACCESSORY MOUNTING HEIGHTS

GRAB BARS	33"-36"
TOILET PAPER HOLDER	19" MIN
TOWEL BAR/PAPER TOWEL DISPENSER	48" MAX
BUILT IN PAPER TOWEL DISPENSER	48" MAX
SOAP DISPENSERS AT WALL	48" MAX
SANITARY DISPOSAL UNIT	19" MAX
MIRROR (BOTTOM)	48" MAX
SHELVES/STORAGE	48" MAX
ELECTRICAL SWITCHES/OUTLETS	48" MAX
COAT HOOKS/ROCKERS	60" MAX
SIGNAGE (TO BRAILLE COMPONENT)	60" MAX

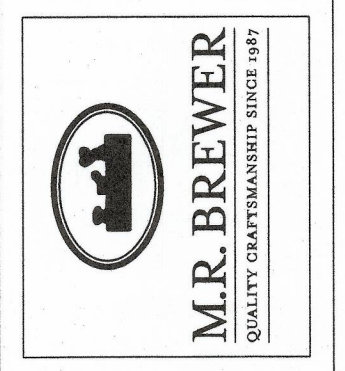
ACCESSIBILITY GENERAL NOTES

- DOORWAYS SHALL HAVE A MINIMUM CLEAR WIDTH OF 32" WITH THE DOOR OPEN 90 DEGREES, MEASURED BETWEEN THE FACE OF THE DOOR AND THE OPPOSITE STOP.
- ALL DOORS SHALL HAVE LEVER HANDLE HARDWARE, EXCEPT AT SECURED STORAGE ROOMS, MECHANICAL ROOMS, AND ELEVATOR MACHINE ROOMS.
- ALL CLOSERS SHALL BE SLB PULL MAXIMUM AT DOORS EQUIPPED WITH LEVER HANDLE HARDWARE.
- ALL DOORS WITH CLOSERS SHALL HAVE 18" CLEAR DISTANCE FROM THE LATCHSIDE OF THE OPENING TO ANY ADJACENT WALL OR OBSTRUCTION ON THE FULL SIDE OF THE OPENING.
- ALL DOORS WITH CLOSERS SHALL HAVE 12" CLEAR DISTANCE FROM THE LATCHSIDE OF THE OPENING TO ANY ADJACENT WALL OR OBSTRUCTION ON THE PUSH SIDE OF THE OPENING.
- ALL SIGNAGE SHALL BE MOUNTED 60" AFF TO BRAILLE COMPONENT AT LATCH-SIDE WALL OF DOORS AND OPENINGS.
- COMPLY WITH 2010 EDITION OF THE AMERICANS WITH DISABILITIES ACT.



JANUARY 19, 2011
REVISED FOR ADA
COMPLIANCE AT
NEW TOILET ROOMS -
DIMENSIONS &
ADA DETAIL

COPYRIGHT: reuse or reproduction of the contents of this document is not permitted without written permission of M.R. Brewer, Inc.



No.	DESCRIPTION	BY	DATE
		HEA	

SHEET TITLE:

PROJECT DESCRIPTION:
BELL STREET RENOVATION

DRAWINGS PROVIDED BY:
M.R. BREWER, Inc.
91 Bell Street, Portland, Maine 04101
T. 207.797.7534 F. 207.797.0973
www.mrbrewer.com

JOB No:

DATE: DEC. 22, 2016

SCALE: AS NOTED

SHEET: 1 OF 1