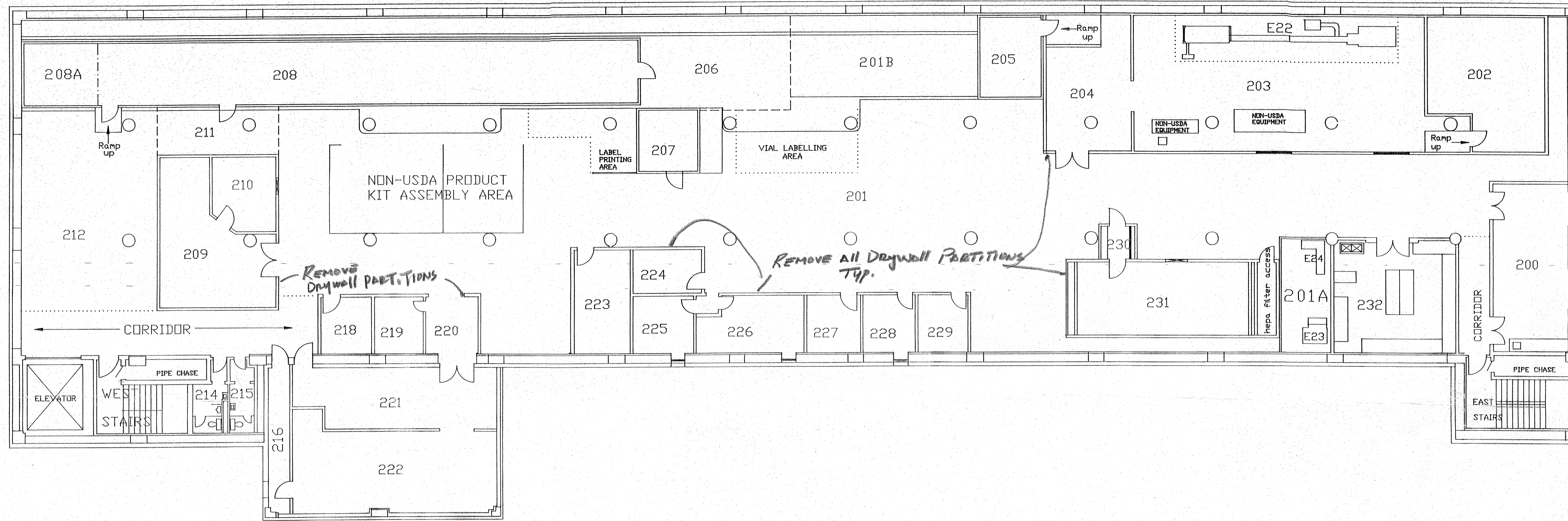
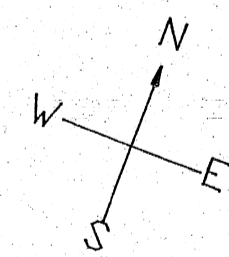


SECOND FLOOR PLAN



- NOTES:**
- All DRYWALL PARTITIONS TO BE REMOVED
 - All ACOUSTICAL CEILING TO BE REMOVED
 - All FLOORING TO BE REMOVED (INLaid)
 - REMOVE ALL LIGHT FIXTURES
 - REMOVE ALL DUCT WORK



BINAX, INC.
 Est. No. 330
 217 Read St.
 Portland, ME 04103
 Date: 11/7/95

Scale: 3/32" = 1 Foot

Supersedes: 3/25/94

Signed: _____
 Title: _____