

MAGNETIC

N

FRYE STREET

EROSION CONTROL  
BLANKET ON 3:1  
SLOPES (TYP.)

INV. = 66.0  
RIPRAP APRON  
INV/OUT = 13.5

CHECKDAM  
(TYP.)  
RIP  
INV,  
RIP  
SWL

EMERGENCY  
SPILLWAY  
TOP OF SPILLWAY  
EL. = 71.5

6" UD  
INV. = 66.0  
RIPRAP  
INV/IN  
= 69.5

BITUMINOUS  
SIDEWALK TO  
BE REMOVED

RIPRAP  
INV/OUT  
= 67.54  
6" UD  
RIPRAP OUTLET  
INV. = 66.0

INSTALL 90D 8"  
WIDE ALONG WALL

4'-HIGH GREEN  
VINYL-COATED  
CHAIN-LINK FENCE  
ALONG TOP OF WALL

15" CULVERT  
L = 25'  
S = 0.006  
INV/IN = 60.65

6" UD  
S = 0.00

12" SD  
L = 132  
S = 0.015

8" S  
L = 30'  
S = 0.0206  
SMH-7  
RIM = 82.0

8" S  
L = 30'  
S = 0.0206  
SMH-7  
RIM = 82.0

1250 GAL.  
GREASE  
TRAP  
INV/OUT  
= 76.67

8" RD  
L = 195  
S = 0.005  
CB-3A  
RIM = 81.5  
INV/IN = 76.90  
INV/OUT = 76.51  
2% TYP.

8" RD  
L = 50  
S = 0.005

12" SD  
L = 72  
S = 0.005

15" SD  
L = 120  
S = 0.067

8" RD  
L = 70  
S = 0.018

12" SD  
L = 81.0  
S = 0.067

8" RD  
L = 70  
S = 0.018

8" RD  
L = 70  
S = 0.018

8" RD  
L = 70  
S = 0.018

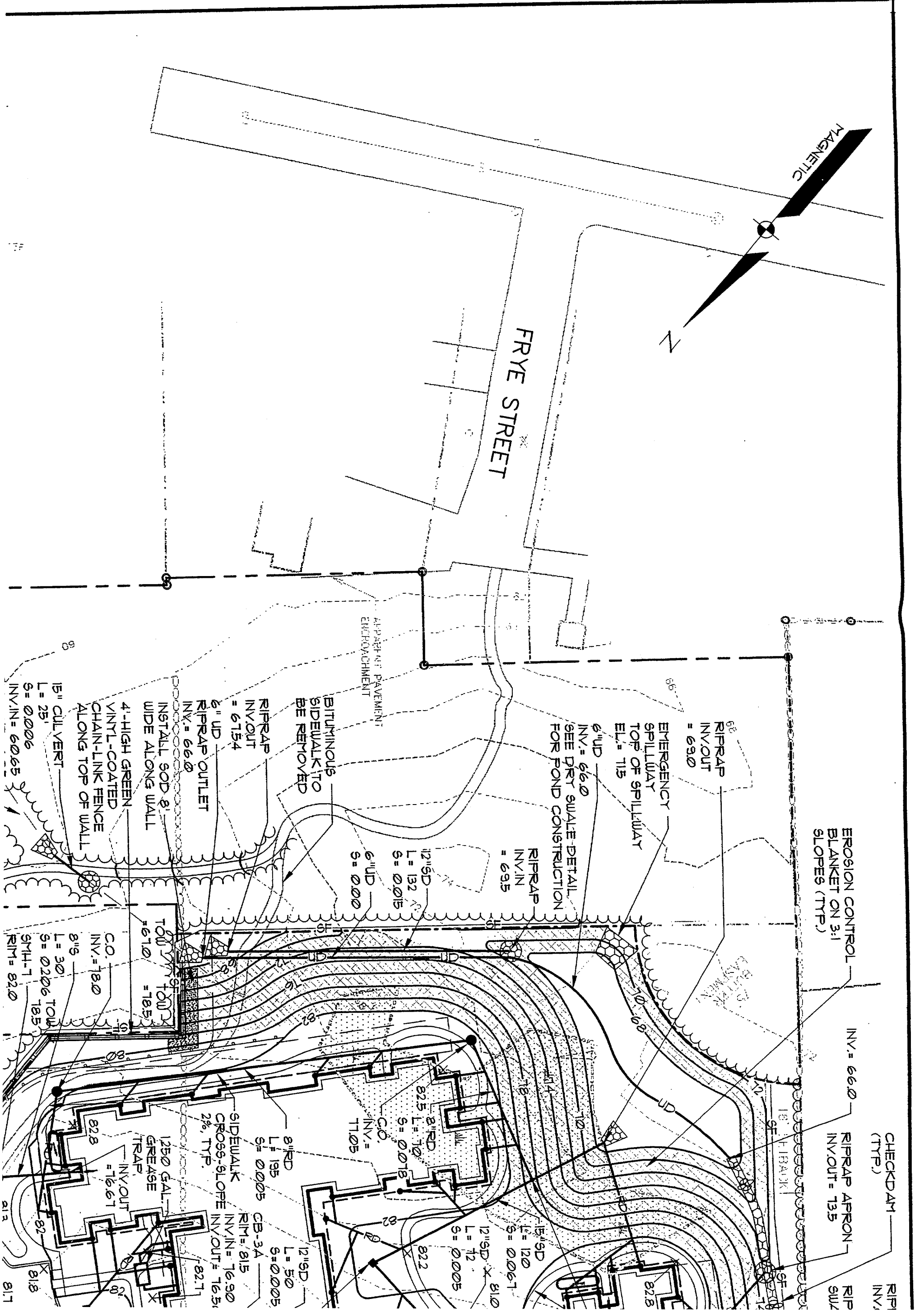
8" RD  
L = 70  
S = 0.018

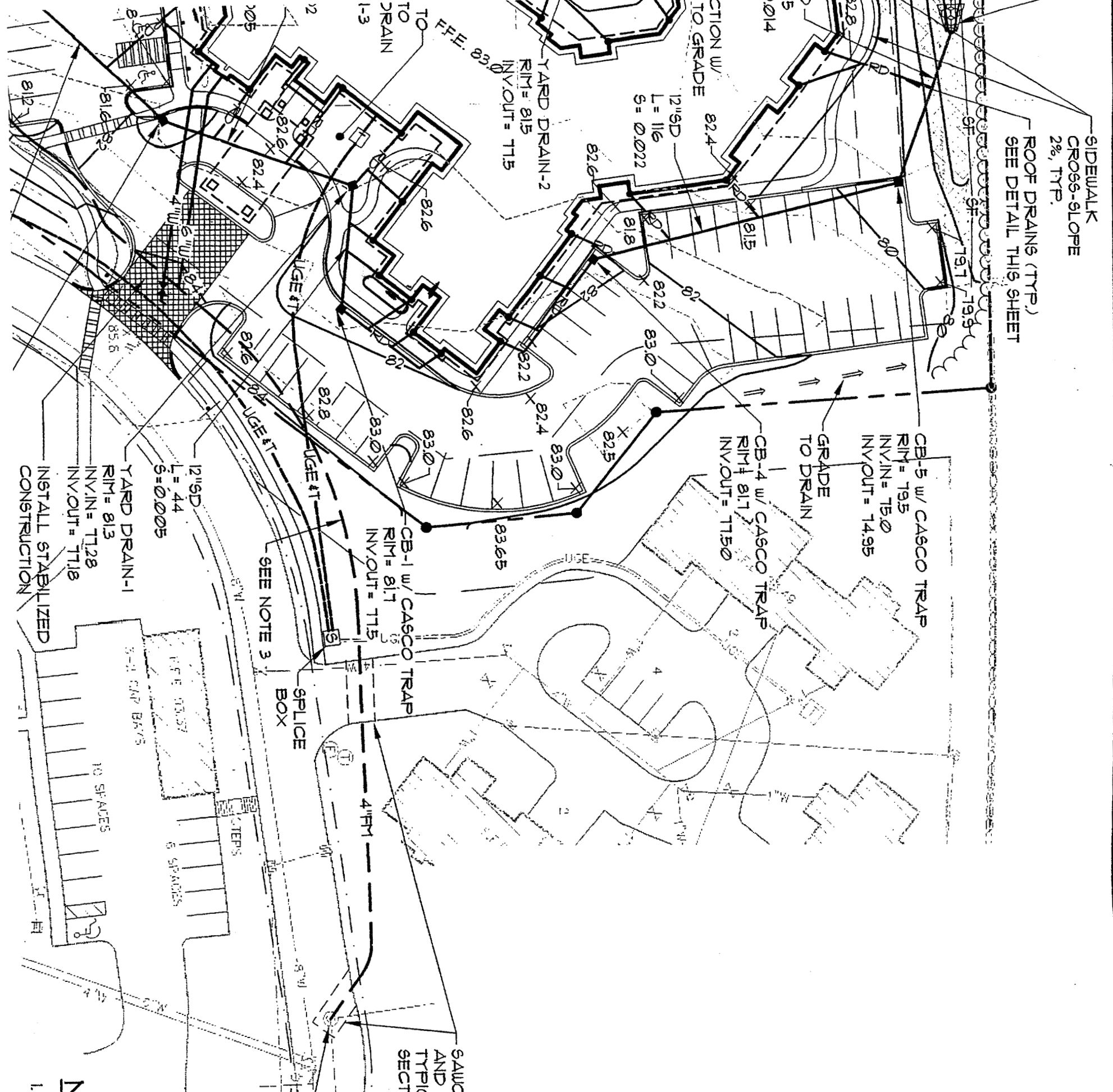
8" RD  
L = 70  
S = 0.018

8" RD  
L = 70  
S = 0.018

8" RD  
L = 70  
S = 0.018

8" RD  
L = 70  
S = 0.018





**LEGEND**

EXISTING	DESCRIPTION	PROPOSED
---	PROPERTY/ROW	---
○	IRON PIPE/ROD	●
▭	BUILDING	▭
▨	WETLANDS	▨
▧	EDGE WETLAND SIGN	▧
▩	ROCK OUTCROP	▩
▪	EDGE PAVEMENT	▪
▬	GRAVEL ROAD	▬
▮	CURBLINE	▮
⊙	TEST PIT	⊙ TP-1
---	CONTOURS	---
---	WATER	---
---	SEWER	---
---	STORM DRAIN	---
---	UNDERGROUND ELEC. & TEL.	---
---	GATE VALVE	---
---	LIGHT POLE	---
---	UTILITY POLE	---
---	HYDRANT	---
---	CATCH BASIN	---
---	MANHOLE	---
---	SPOT GRADE	---
---	STONE WALL	---
---	SILT FENCE	---
---	RIPRAP	---

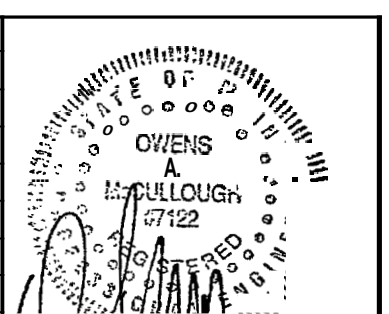
SAWCUT PAVEMENT AND REPAIR TO TYPICAL ROAD SECTION DETAIL

EXISTING MANHOLE REBUILD BRICK CHANNEL FOR FORCE MAIN TERMINUS NEW INV. = 75.75±

**NOTES:**

- COORDINATE GRADES AT BUILDING WITH

10-05-04	REVISED GRADES AT COTTAGE UNITS PER FIELD CONDITIONS
06-15-04	REVISED PER PLANNING BOARD APPROVAL
04-14-04	REVISED PER ENGINEERING REVIEW COMMENTS
03-05-04	ISSUED FOR CITY REVIEW
ATE:	STATUS:



LEE STREET

DRAINAGE

LIMIT DISTURBANCE  
TRENCH WORK TO  
10' WIDE AT WETLAND  
CROSSING

DRAINAGE WAY

EROSION CONTROL  
BLANKET ON 3:1  
SLOPES (TYP.)

6" S  
L = 129  
S = 0.0005  
SMH-6  
RIM = 675  
INV.IN = 6180  
INV.OUT = 6170

LEVEL SPREADER  
#2 (21" LIP)  
INV.OUT = 65.83

15" SD  
L = 10  
S = 0.071

DMH-2  
RIM = 76.2  
INV.IN = 71.31  
INV.OUT = 71.21

15" SD  
L = 48  
S = 0.0005

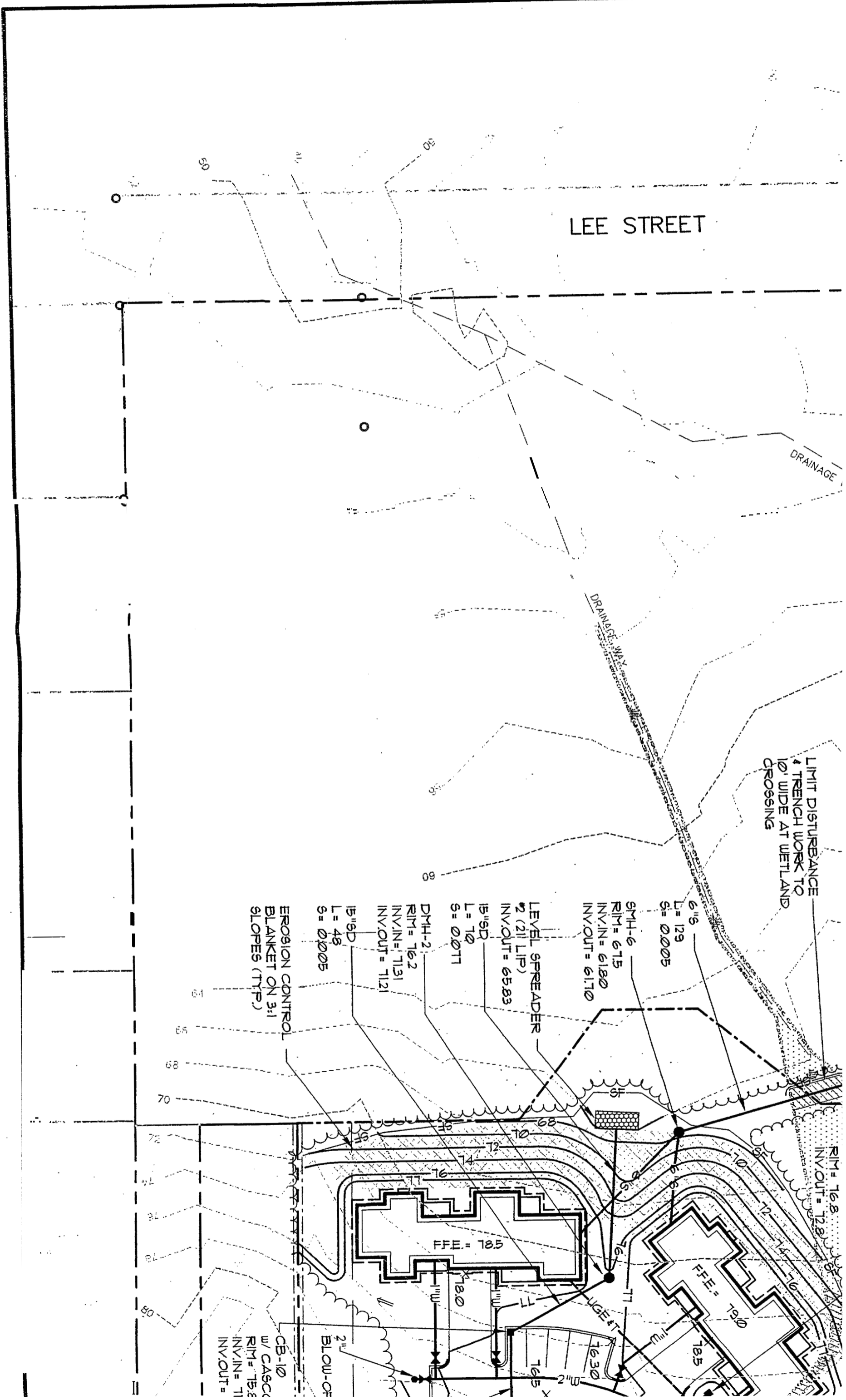
RIM = 76.8  
INV.OUT = 72.8

FFE = 79.0

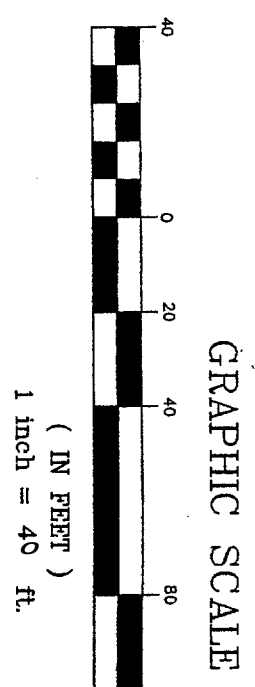
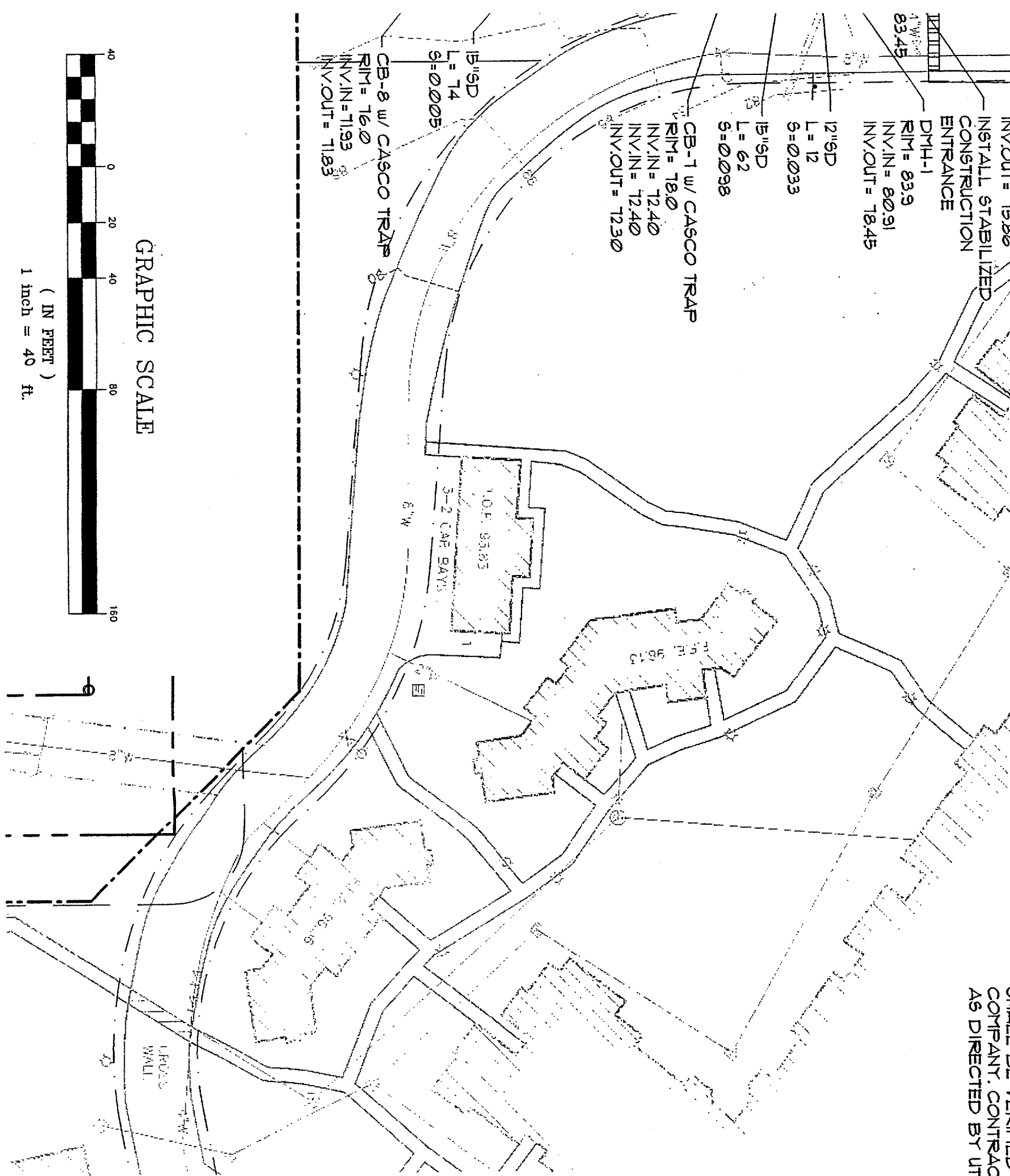
FFE = 78.5

2" BLOW-OFF

CB-10  
w/ CASCC  
RIM = 75.8  
INV.IN = 71  
INV.OUT =



COMPANY, CONTRACTOR SHALL MAKE CHANGES AS DIRECTED BY UTILITIES.



149 B 001

**GRADING, DRAINAGE & UTILITY PLAN**  
OF:  
**PORTLAND ASSISTED LIVING FACILITY - PHASE II**  
CANCO ROAD  
PORTLAND, MAINE  
FOR:  
**XL MGMT. CO., LLC & HOLIDAY RETIREMENT CORP.**  
2250 MCGILCHRIST ST. SE, SUITE 200  
SALEM, OREGON 97302

DATE	SCALE
11-30-03	1"=40'

**SHEET 4 OF 13**

**Sebago Technic**  
Engineering Expertise You Can Build  
One Chabot Street  
Westbrook, Me 04098-1339  
Tel (207) 856-0277

PROJECT NO.	FIELD BOOK	DESIGN
96592-P2		SAG