

DRAWINGS ARE PROVIDED BY REID TOZIER AS A SERVICE TO HIS CUSTOMERS. REID TOZIER IS NOT RESPONSIBLE FOR THE ACCURACY OF THE INFORMATION PRESENTED IN THESE DRAWINGS. REID TOZIER IS NOT A LICENSED ARCHITECT OR REGISTERED ARCHITECT AND SHOULD NOT BE USED AS A BASIS FOR CONSTRUCTION. REID TOZIER SUGGESTS THAT HIS CUSTOMERS SEEK THE SERVICES OF A LICENSED OR REGISTERED ARCHITECT TO OBTAIN TECHNICAL BLUE PRINTS IF THE CUSTOMER DESIRES TO PROCEED FURTHER. THESE DRAWINGS ARE NOT TO BE USED AS A BASIS FOR CONSTRUCTION AND REID TOZIER DISCLAIMS ANY RESPONSIBILITY IF THEY ARE SO USED.

REVISIONS:
 REVISION #1 - 6/24/14

DATE: MAY 5, 2014

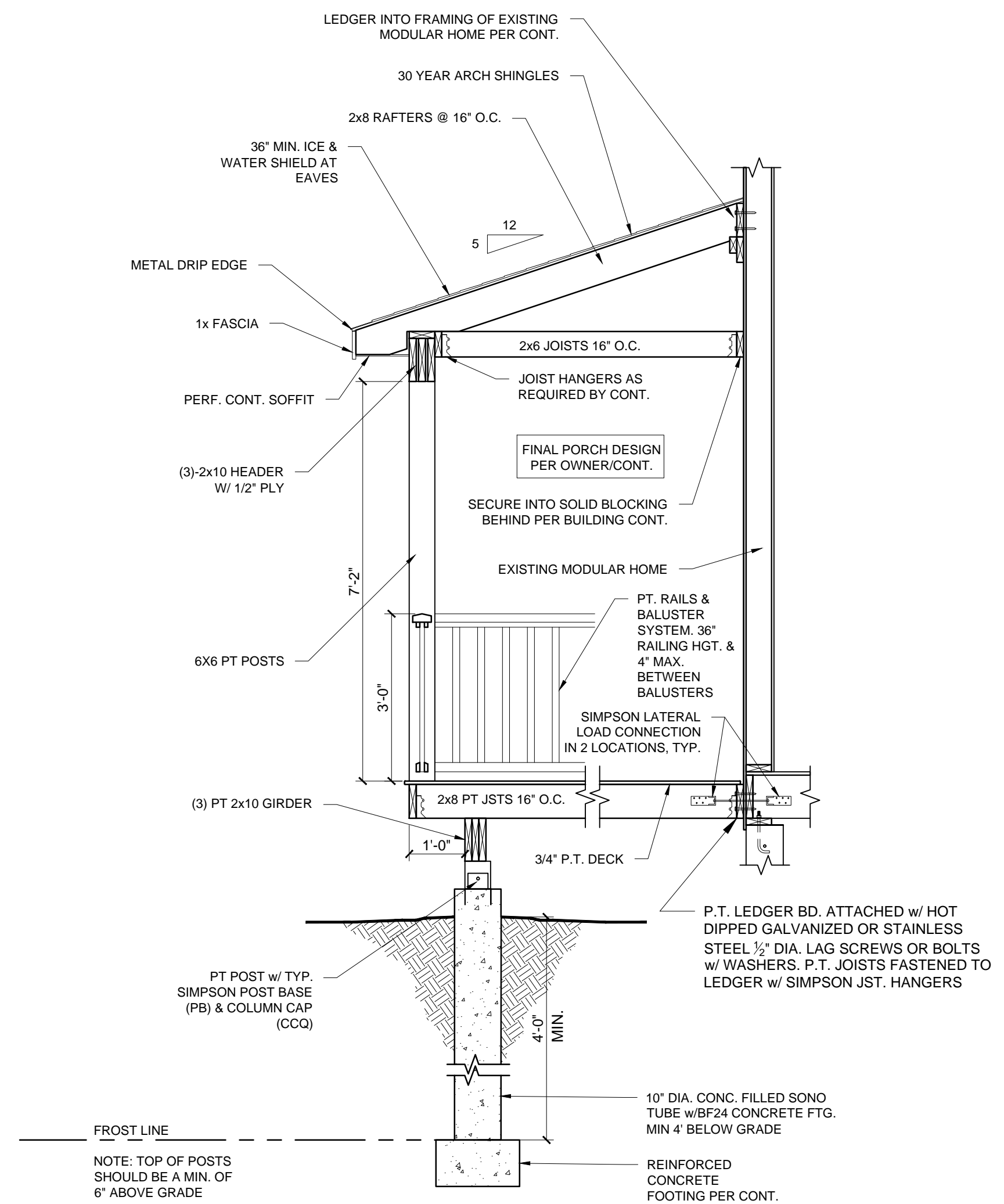
PROJECT No.

DRAWN BY:

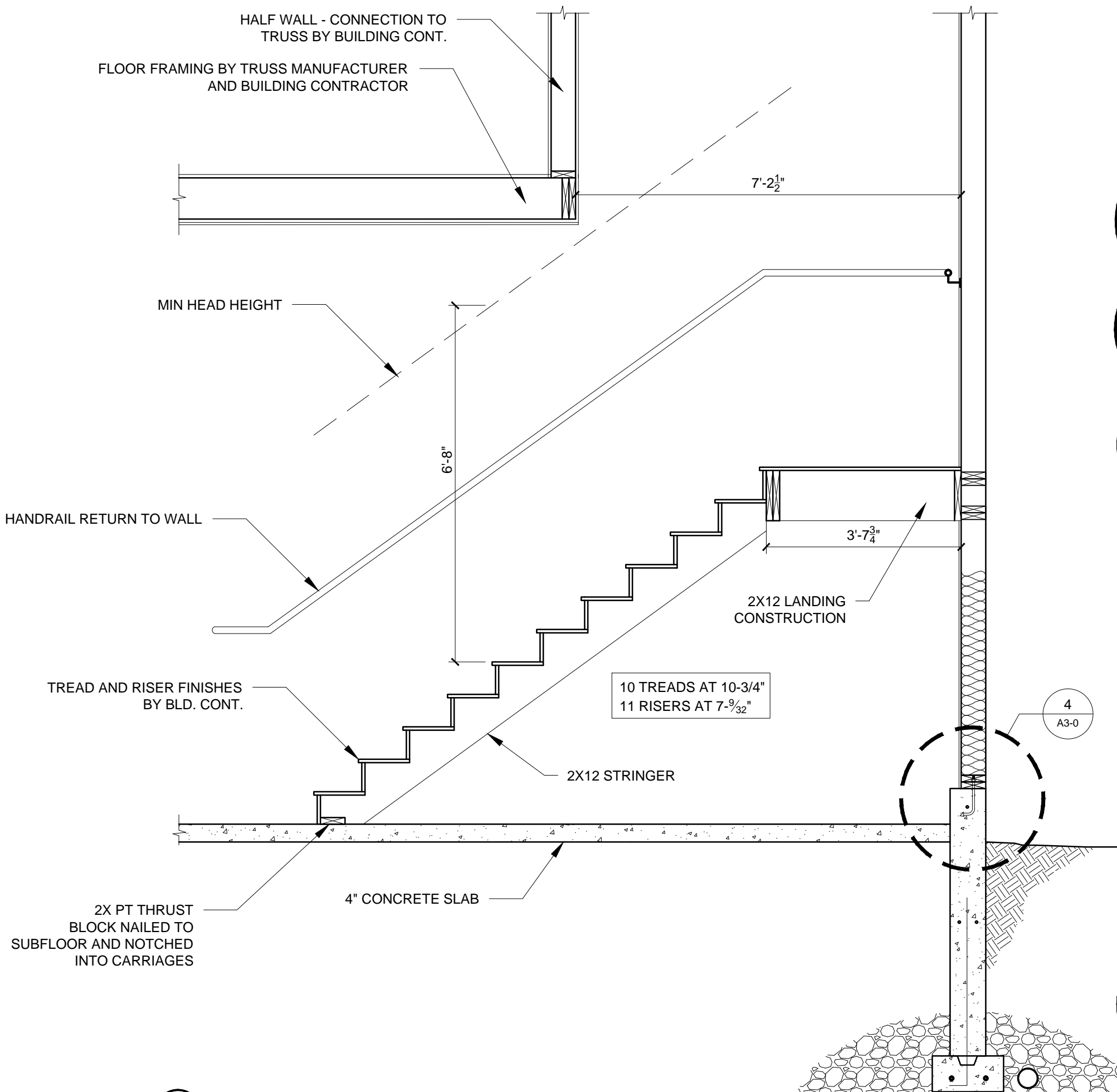
CHECKED BY:

SCALE: AS NOTED

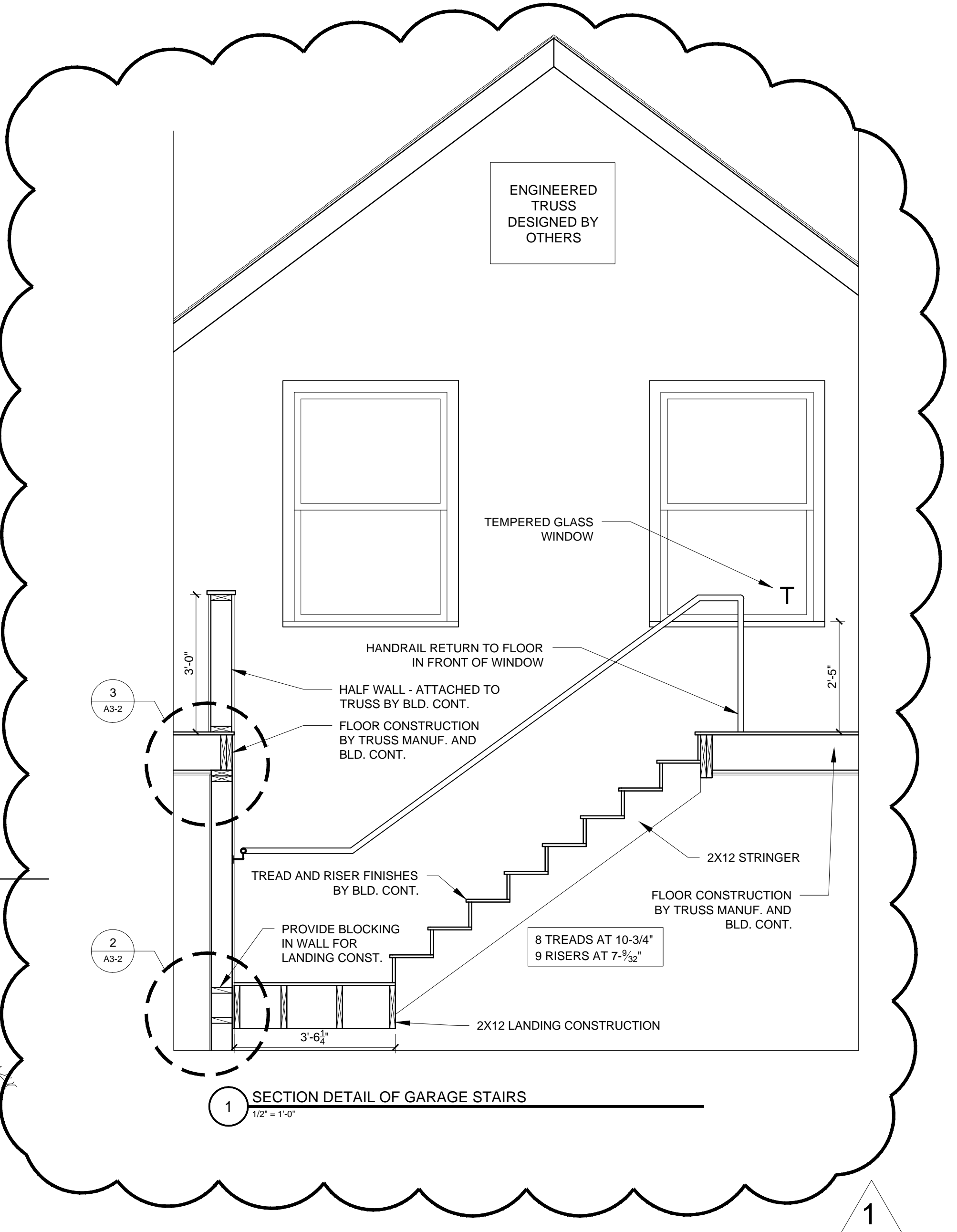
SHEET TITLE:
DETAILS



3 SECTION DETAIL OF SCREENED IN PORCH
 1/2" = 1'-0"



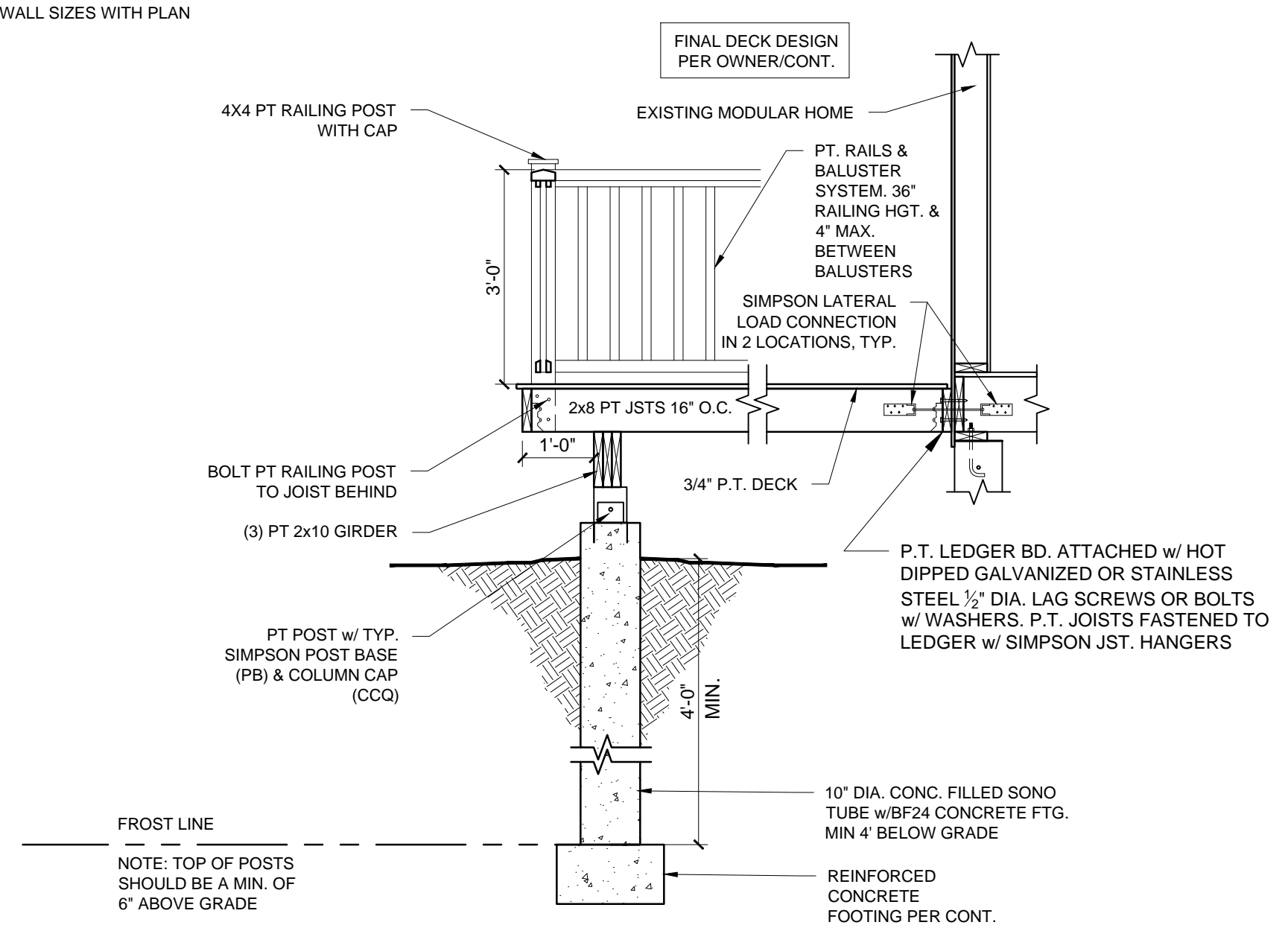
2 SECTION DETAIL OF GARAGE STAIRS
 1/2" = 1'-0"



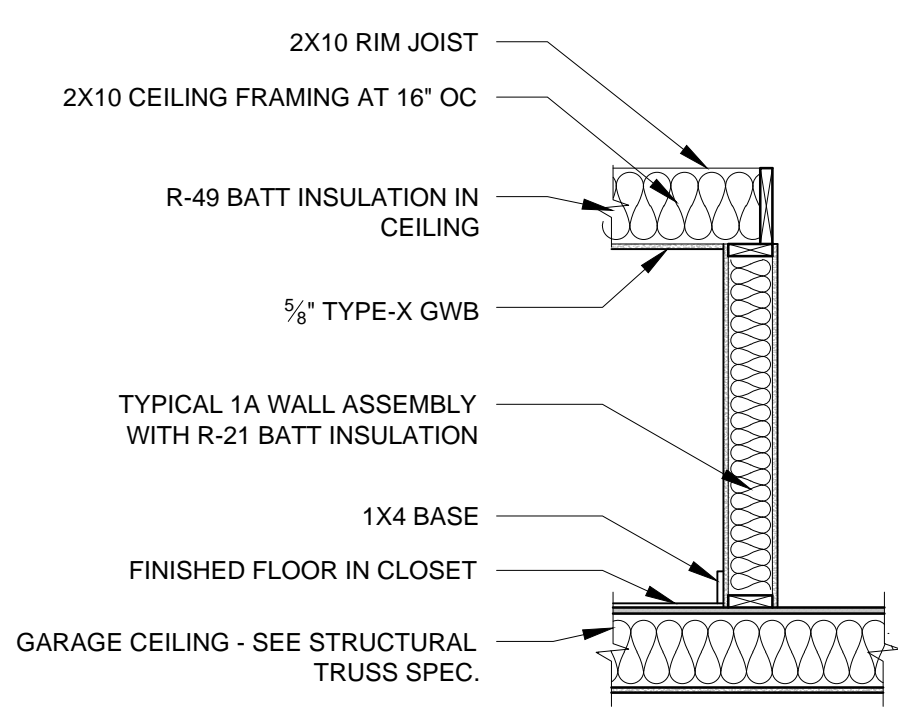
1 SECTION DETAIL OF GARAGE STAIRS
 1/2" = 1'-0"

NOTE:

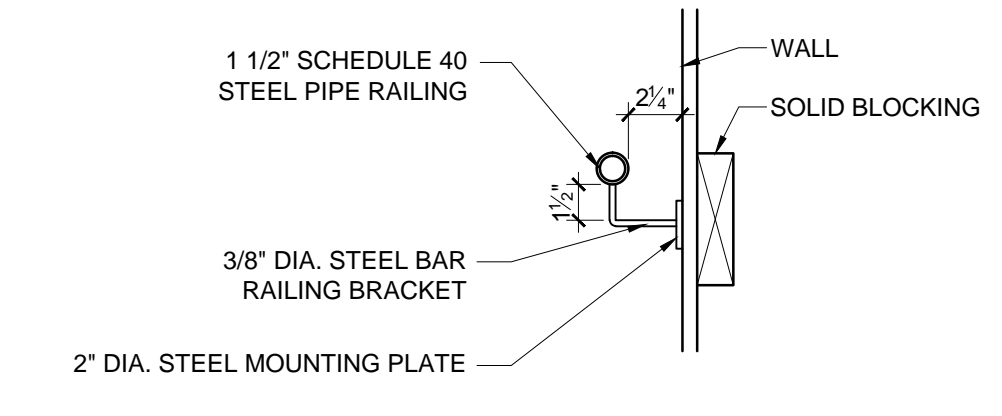
1. THE GROUND IMMEDIATELY ADJACENT TO THE FOUNDATION SHALL BE SLOPED AWAY FROM THE BUILDING AT A SLOPE OF 1/2" VERTICAL TO 12" HORIZONTAL FOR A MINIMUM DISTANCE OF 8'-0". THIS CONDITION SHALL EXIST AFTER SETTLEMENT OF BACKFILL HAS OCCURRED.
2. SUBSTITUTE FLR JOISTS AND STUD WALL SIZES WITH PLAN CALL OUT



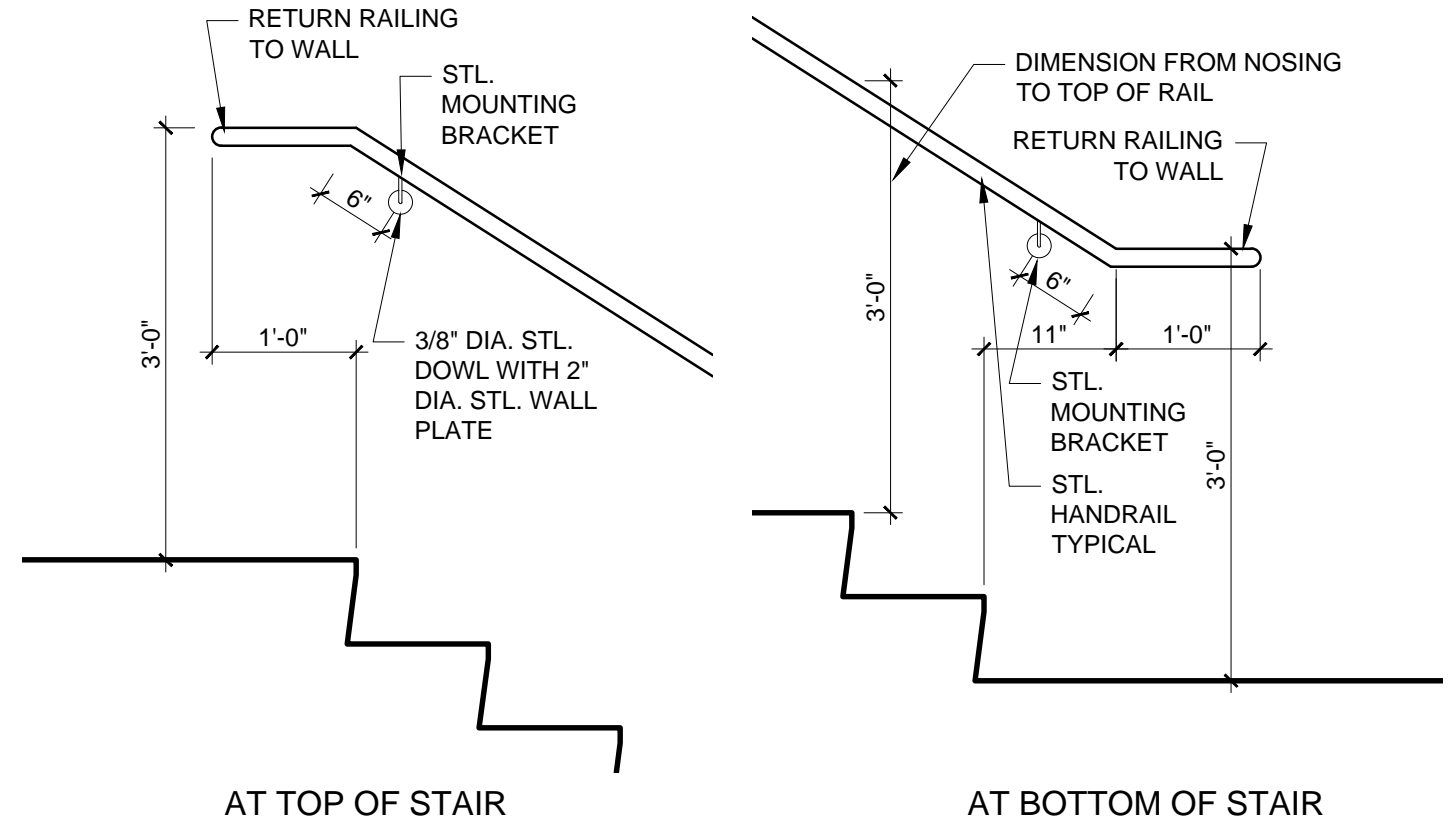
7 SECTION DETAIL DECK WITH RAILING
 1/2" = 1'-0"



6 SECTION DETAIL OF CLOSET IN GARAGE
 1/2" = 1'-0"



5 TYPICAL RAILING DETAILS
 1-1/2" = 1'-0"



4 TYPICAL RAILING DETAILS
 3/4" = 1'-0"

