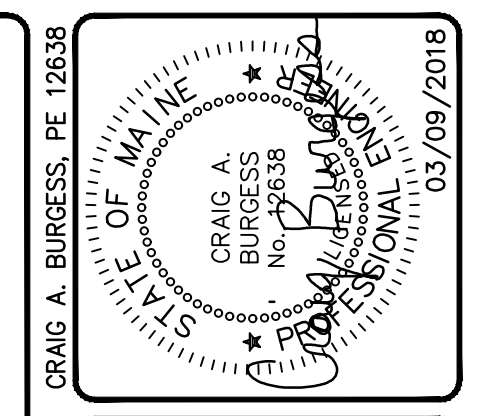
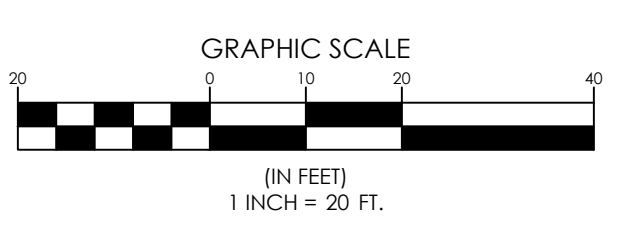




- ### UTILITY DEMOLITION NOTES
- PROTECT EXISTING BOUNDARY LINE MONUMENTATION. IF DISTURBED, EXISTING MONUMENTATION TO BE RESET BY A PROFESSIONAL LAND SURVEYOR.
 - UTILITY DEMOLITION SHALL BE COMPLETED IN COORDINATION WITH NEW INFRASTRUCTURE AND STRUCTURES. CONTRACTOR SHALL ENSURE EXISTING SURFACE DRAINAGE IS MAINTAINED DURING CONSTRUCTION.
 - EXISTING STORM DRAINAGE INFRASTRUCTURE IS TO REMAIN ACTIVE DURING CONSTRUCTION AND UPON COMPLETION OF PROJECT. DEMOLITION/CONSTRUCTION ACTIVITIES SHALL NOT INTERFERE OR IMPEDE EXISTING FLOWS. CONTRACTOR SHALL PROVIDE BYPASS PUMPING AS REQUIRED DURING NEW CONSTRUCTION. DAMAGE TO EXISTING INFRASTRUCTURE SHALL BE REPAIRED BY CONTRACTOR AT THEIR EXPENSE.
 - PROTECT EXISTING UTILITIES UNLESS NOTED OTHERWISE.
 - DEMOLITION SHOWN IS FOR MAJOR SITE ELEMENTS TO BE DEMOLISHED. OTHER MINOR DEMOLITION MAY BE REQUIRED AS PART OF CONSTRUCTION AND SHALL BE CONSIDERED INCIDENTAL TO THE COST OF CONSTRUCTION. COORDINATE ALL DEMOLITION WORK WITH SITE DRAWINGS.
 - PRIOR TO ANY DEMOLITION, THE CONTRACTOR SHALL SUBMIT A SEQUENCE OF DEMOLITION PLAN TO THE OWNER. THIS PLAN SHALL DEPICT LOCATIONS OF PROPOSED TERMINATIONS AND ANY TEMPORARY SERVICES THAT WILL BE NEEDED.

- ### DEMOLITION KEY
- | | |
|---|---------------------------|
| 1 | SAW CUT PAVEMENT |
| 2 | REMOVE ASPHALT PAVEMENT |
| 3 | REMOVE DRAINAGE PIPE |
| 4 | REMOVE DRAINAGE STRUCTURE |
| 5 | REMOVE BOLLARD |
| 6 | REMOVE RETAINING WALL |
| 7 | REMOVE CONCRETE PAD |

- ### LEGEND
- EXISTING
- PROPERTY LINE/R.O.W.
 - ABUTTER LINE/R.O.W.
 - DEED LINE/R.O.W.
 - TIE LINE
 - EASEMENT
 - CENTERLINE
 - MONUMENT
 - IRON PIPE/ROD
 - C1/L1 DEED CALL
 - C1/L1 CURVE/LINE NO.
 - ⊠ BENCHMARK WITH ELEVATION
 - ▨ BUILDING
 - ▨ DECK/STEPS/OVERHANG
 - B-1 BORING
 - EDGE WETLAND
 - WETLANDS
 - STREAM
 - EDGE PAVEMENT
 - EDGE CONCRETE
 - PAVEMENT PAINT
 - EDGE GRAVEL
 - CURB LINE
 - EDGE OF WATER
 - TREELINE
 - CONTOURS
 - X120.00 SPOT GRADE
 - CHAIN LINK FENCE
 - X BARB WIRE FENCE
 - STOCKADE FENCE
 - GUARD RAIL
 - STONE WALL
 - RETAINING WALL
 - DECIDUOUS TREE
 - CONIFEROUS TREE
 - BOLLARD
 - SIGN
 - GAS
 - GAS GATE VALVE
 - GAS METER
 - GAS MANHOLE
 - WATER
 - WATER GATE VALVE
 - WATER SHUT OFF
 - HYDRANT
 - WATER MANHOLE
 - POTABLE WELL
 - SANITARY SEWER
 - FORCE MAIN
 - SANITARY MANHOLE
 - STORM DRAIN
 - UNDER DRAIN
 - DRAINAGE MANHOLE
 - CATCH BASIN
 - FIELD INLET
 - STEAM LINE
 - OHU OVERHEAD UTILITY
 - UNDERGROUND UTILITY
 - TRANSFORMER PAD
 - ELECTRICAL MANHOLE
 - TELEPHONE MANHOLE
 - LIGHT POLE
 - UTILITY POLE
 - GUY WIRE
 - RIPRAP



DESIGNED	CHECKED
KJR	CAB
A CAB 03/09/18 ISSUE TO CITY - LEVEL II SITE ALTERATION REV. BY: DATE: STATUS: THIS PLAN SHALL NOT BE MODIFIED WITHOUT WRITTEN PERMISSION FROM SEBAGO TECHNICS, INC. ANY ALTERATIONS AUTHORIZED OR OTHERWISE, SHALL BE AT THE USER'S SOLE RISK AND WITHOUT LIABILITY TO SEBAGO TECHNICS, INC.	

SEBAGO TECHNICS
 WWW.SEBAGO-TECHNICS.COM
 75 John Roberts Rd.
 Suite 404E
 South Portland, ME 04106
 Tel: 207-200-2100

DEMOLITION PLAN
 OF:
 CITY OF PORTLAND PUBLIC WORKS
 250 CANCO ROAD
 PORTLAND, MAINE
 FOR:
 CITY OF PORTLAND, DEPARTMENT OF
 212 CANCO ROAD
 PORTLAND, MAINE 04101

CRAIG A. BURGESS, PE 12638
 15056EN03.dwg, TAB: DEMO