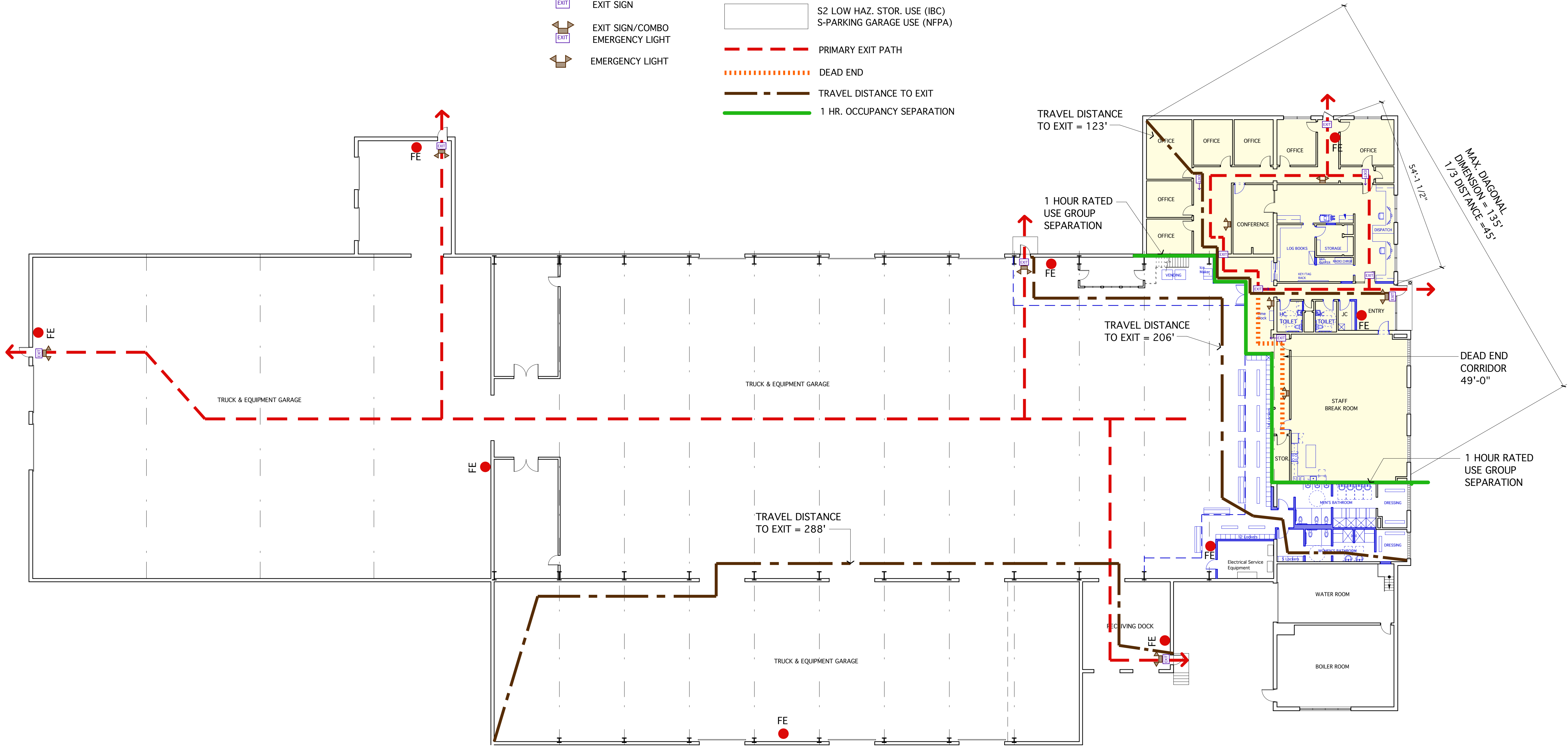




LEGEND

- FIRE EXTINGUISHER (REQUIRED EVERY 75')
- EXIT EXIT SIGN
- EXIT EXIT SIGN/COMBO EMERGENCY LIGHT
- EXIT EMERGENCY LIGHT
- BUSINESS USE
- S2 LOW HAZ. STOR. USE (IBC) S-PARKING GARAGE USE (NFPA)
- PRIMARY EXIT PATH
- DEAD END
- TRAVEL DISTANCE TO EXIT
- 1 HR. OCCUPANCY SEPARATION



CITY OF
PORTLAND
DEPT. OF
PUBLIC WORKS

INTERIOR
RENOVATIONS

Canco Road
Portland, Maine

REVISIONS

PERMIT DOCUMENTS
FEBRUARY 25, 2016

LIFE SAFETY PLAN

Scale: As Noted

LS 1.1

LIFE SAFETY PLAN
Not To Scale