

Structural Engineering:  
**STRUCTURAL INTEGRITY CONSULTING ENGINEERS, INC.**

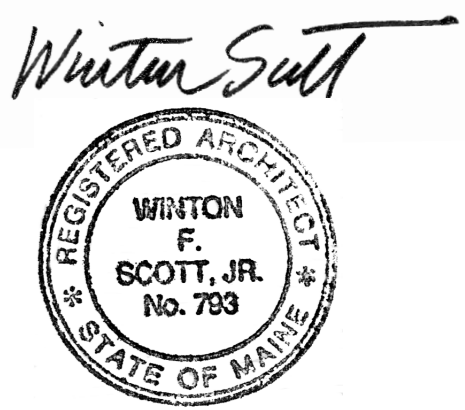
46 Forest Avenue  
 Portland, ME 04101  
 T. 207.774.4614  
 structuralinteg.com

HVAC & Plumbing Engineering:  
**HOLBROOK ENGINEERING, LLC**

T. 207.283.9127  
 holbrookengineering.com

Electrical Engineering:  
**SWIFT CURRENT ENGINEERING SERVICES**

Royal River Center, Unit 8B  
 10 Forest Falls Drive  
 Yarmouth, ME 04096  
 T. 207.847.9280



**CITY OF PORTLAND DEPARTMENT HEADQUARTERS:**

-Parks, Recreation & Facilities  
 -Public Works

**RENOVATION PROJECT**  
 212 Canco Road,  
 Portland

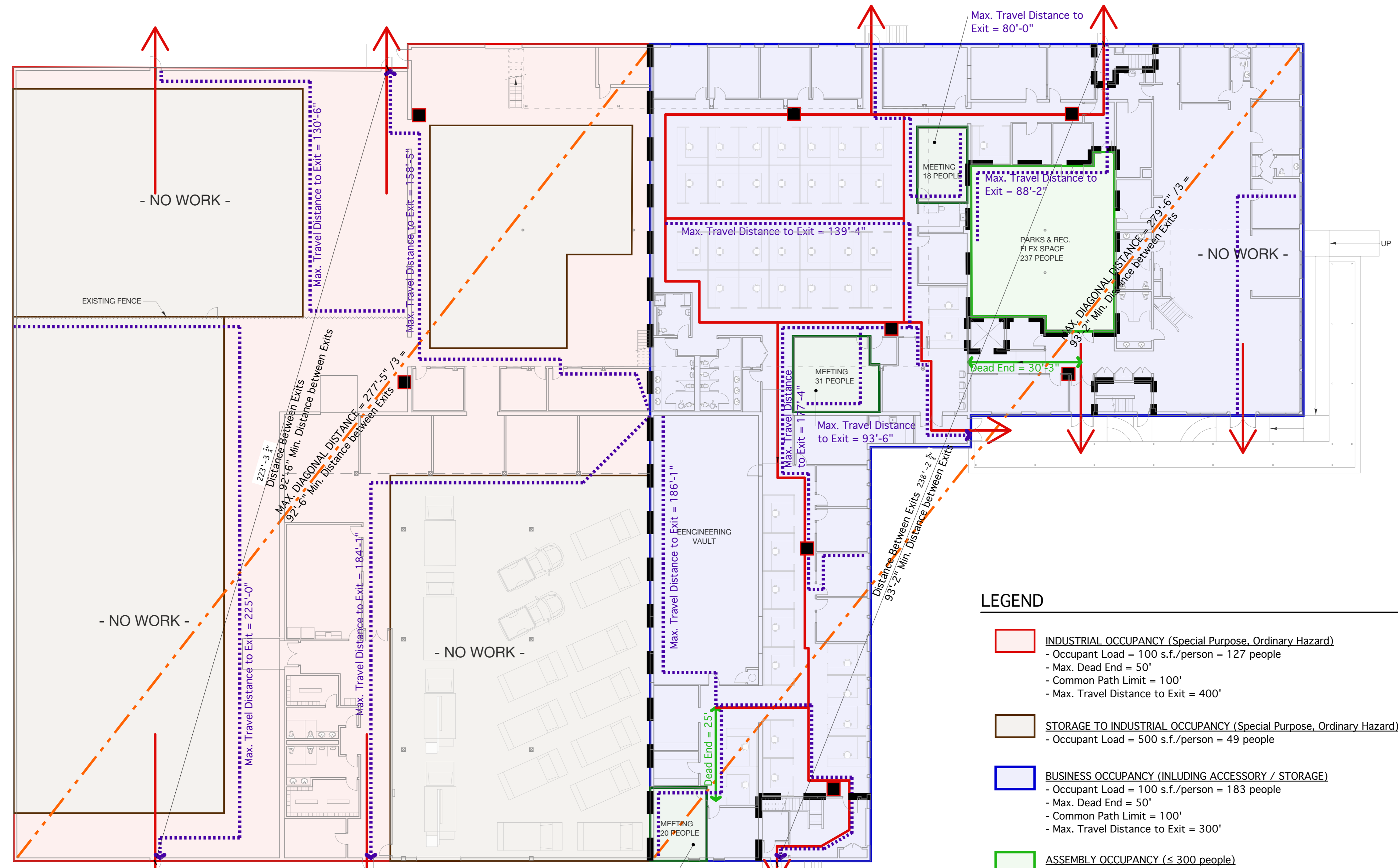
**REVIEW SET NOT FOR CONSTRUCTION**

Scale: 1/16" = 1'-0"

**LIFE SAFETY PLAN FIRST FLOOR**

**A0.3**

March 12, 2018



**LEGEND**

- INDUSTRIAL OCCUPANCY (Special Purpose, Ordinary Hazard)**  
 - Occupant Load = 100 s.f./person = 127 people  
 - Max. Dead End = 50'  
 - Common Path Limit = 100'  
 - Max. Travel Distance to Exit = 400'
  - STORAGE TO INDUSTRIAL OCCUPANCY (Special Purpose, Ordinary Hazard)**  
 - Occupant Load = 500 s.f./person = 49 people
  - BUSINESS OCCUPANCY (INCLUDING ACCESSORY / STORAGE)**  
 - Occupant Load = 100 s.f./person = 183 people  
 - Max. Dead End = 50'  
 - Common Path Limit = 100'  
 - Max. Travel Distance to Exit = 300'
  - ASSEMBLY OCCUPANCY (<= 300 people)**  
 - Occupant Load = 7 s.f./person = 237 people  
 - Max. Dead End = 20'  
 - Common Path Limit = 20'(over 50 people)  
 - Max. Travel Distance to Exit = 250'
  - ASSEMBLY OCCUPANCY (<= 300 people)**  
 - Occupant Load = 15 s.f./person = 69 people  
 - Max. Dead End = 20'  
 - Common Path Limit = 20'(over 50 people)  
 - Max. Travel Distance to Exit = 250'
  - ← **PRIMARY EXIT PATH**
  - ↔ **DEAD END LENGTH**
  - - - **MAX. DIAGONAL DISTANCE of AREA SERVED BY MORE THAN 1 EXIT**
  - ⋯ **MAX. TRAVEL DISTANCE TO EXIT PATH**
  - 1 HOUR FIRE RATED SEPARATION (EXIST. STAIRS ASSUMED TO BE 1-HOUR)**
  - **FIRE EXTINGUISHER LOCATION (REQUIRED EVERY 75' & AT STAIRS)**
- NOTE: ENGINEERING VAULT IS 4-HOUR FIRE RATED PER HISTORIC ARCHIVING REQUIREMENTS

