



5 Milk Street, Portland, ME 04101  
207.774.4811 | wintonscott.com

Structural Engineering:  
STRUCTURAL INTEGRITY CONSULTING ENGINEERS, INC.

46 Forest Avenue  
Portland, ME 04101  
T. 207.774.4614  
structuralinteg.com

HVAC & Plumbing  
Engineering:  
HOLBRICK ENGINEERING, LLC

52 Heath Road  
Saco, ME 04072  
T. 207.283.9127  
aholbrick@maine.rr.com

Electrical Engineering:  
SWIFT CURRENT ENGINEERING SERVICES

Royal River Center, Unit 8B  
10 Forest Falls Drive  
Yarmouth, ME 04096  
T. 207.847.9280

CITY OF PORTLAND  
DEPARTMENT  
HEADQUARTERS:

-Parks, Recreation &  
Facilities  
-Public Works

RENOVATION PROJECT  
212 Conco Road,  
Portland

REVIEW SET  
NOT FOR CONSTRUCTION

Scale: AS NOTED

ELECTRICAL POWER &  
SYSTEMS PLAN -  
(PARTIAL) FIRST  
FLOOR

E1.0

March 12, 2018

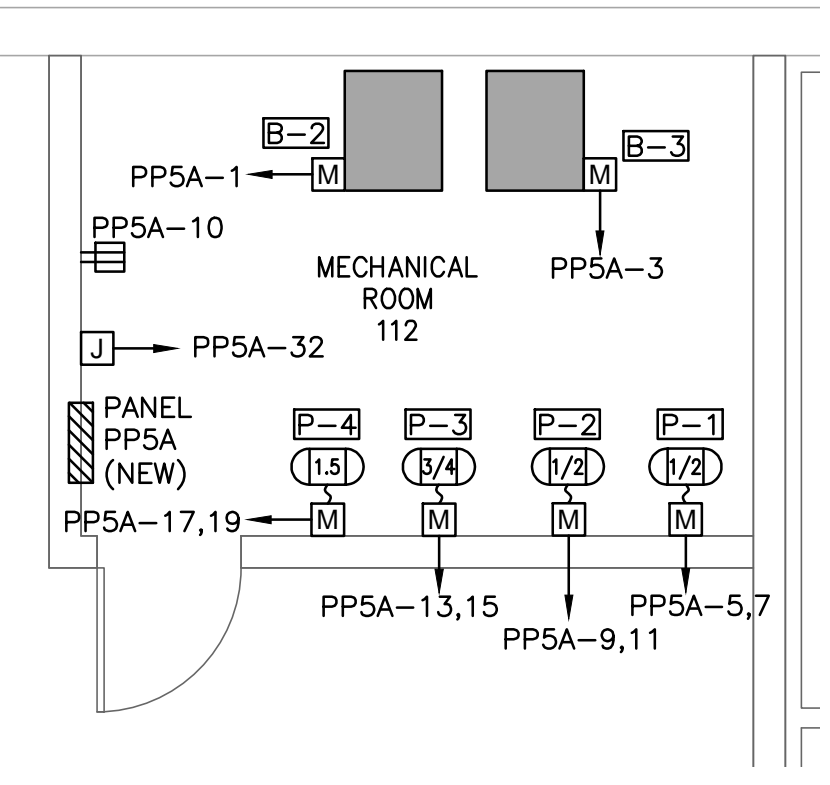
NOTES:

1. SEE E0.0 FOR LEGEND, ABBREVIATIONS AND GENERAL NOTES.

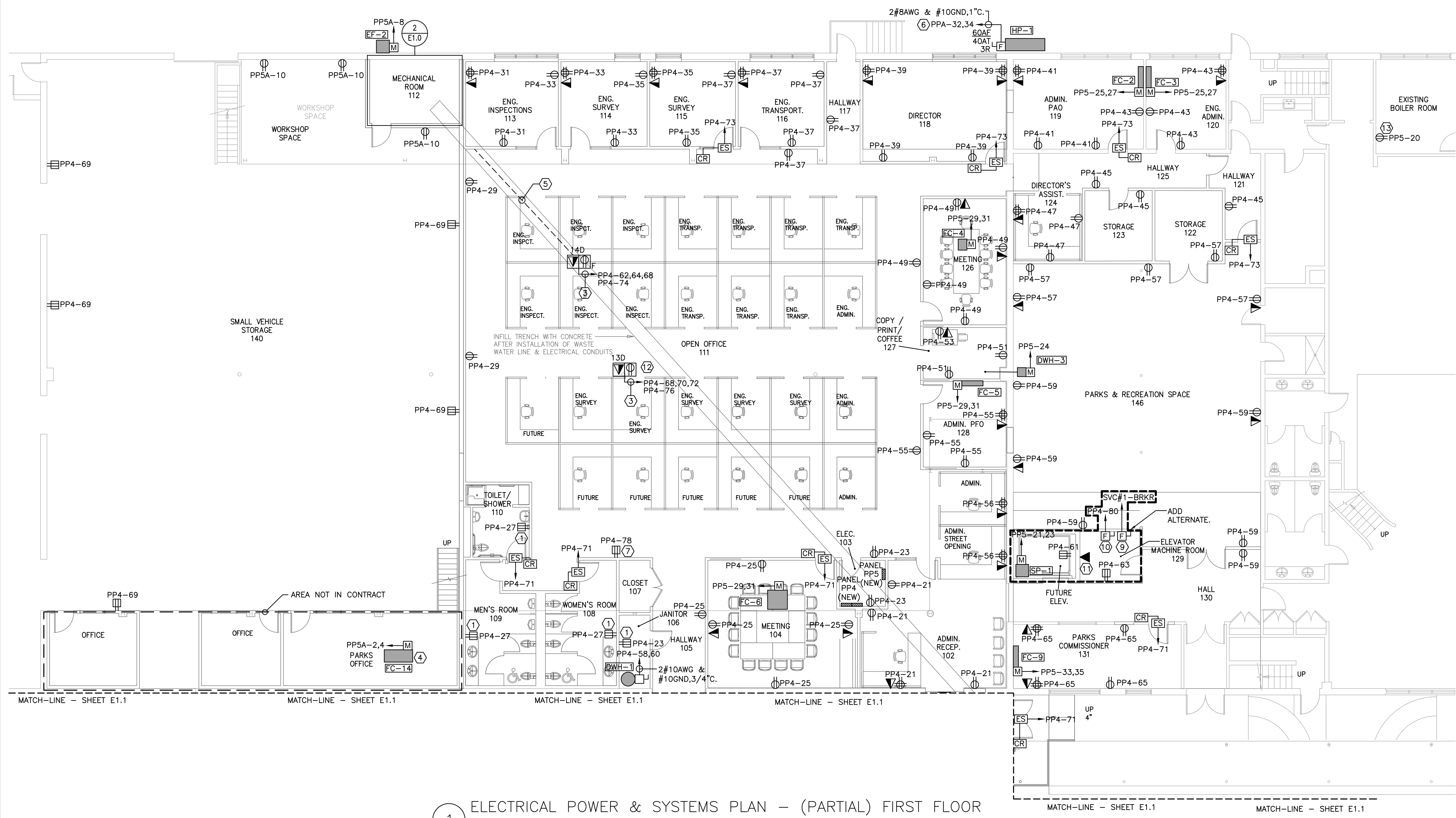
KEYED NOTES:

- ① MOUNT 42" AFF.
- ② MOUNT 6" ABOVE COUNTERTOP. COORDINATE WITH BACKPLASH.
- ③ WIRING TO BE 6#12AWG & #12GND.
- ④ EQUIPMENT SHOWN AS PART OF NEW WORK.
- ⑤ POWER AND DATA CABLING SHALL TRAVEL DOWN WALL AND RUN UNDER SLAB TO STUB UP AT MODULAR FURNITURE. COORDINATE CONNECTION WITH FURNITURE SUPPLIED.
- ⑥ FURNISH NEW 40 AMP 2-POLE HACR-TYPE BREAKER. MATCH SAME PART TYPE AND KAIC RATING AS OTHER BREAKERS IN THE PANEL. BREAKER LOCATED IN EXISTING PANEL PPA LOCATED IN EXISTING 2ND FLOOR ELECTRICAL ROOM. DOCUMENT NEW CIRCUIT ON PANEL SCHEDULE.
- ⑦ DEDICATED BOTTLE FILLER/WATER COOLER RECEPTACLE. COORDINATE MOUNTING LOCATION WITH WATER COOLER.
- ⑧ NOT USED.
- ⑨ ELEVATOR MACHINE DISCONNECT. LOCATE IN ROOM AS PER MANUFACTURER'S INSTRUCTIONS.
- ⑩ ELEVATOR CAB LIGHT DISCONNECT. LOCATE IN ROOM AS PER MANUFACTURER'S INSTRUCTIONS.
- ⑪ FURNISH ANALOG PHONE LINE AS REQUIRED BY ELEVATOR MANUFACTURER.
- ⑫ COORDINATE ELECTRICAL FEED FROM EXISTING BUILDING COLUMN. COORDINATE CONNECTION WITH FURNITURE SUPPLIED.
- ⑬ DEDICATED CIRCUIT FOR FIRE ALARM NAC CONTROLLER.

ADD ALTERNATE.



2 ELECTRICAL DETAIL - MECH. ROOM 112  
SCALE: 1/4"=1'



1 ELECTRICAL POWER & SYSTEMS PLAN - (PARTIAL) FIRST FLOOR  
SCALE: 1/8"=1'

