

NOTES:

1. SEE E0.0 FOR LEGEND, ABBREVIATIONS AND GENERAL NOTES.

DEMOLITION KEYED NOTES:

- ① REMOVE WIRING BACK TO POWER PANEL FOR THE MECHANICAL AND PLUMBING EQUIPMENT TO BE REMOVED. REFERENCE DRAWINGS M1.1 AND P1.1.



5 Milk Street, Portland, ME
04101
207.774.4811 |
wintonscott.com

Structural Engineering:
STRUCTURAL INTEGRITY
CONSULTING ENGINEERS, INC.

46 Forest Avenue
Portland, ME 04101
T. 207.774.4614
structuralinteg.com

HVAC & Plumbing
Engineering:
HOLBRICK ENGINEERING, LLC

52 Heath Road
Saco, ME 04072
T. 207.283.9127
aholbrick@maine.rr.com

Electrical Engineering:
SWIFT CURRENT ENGINEERING
SERVICES

Royal River Center, Unit 8B
10 Forest Falls Drive
Yarmouth, ME 04096
T. 207.847.9280

CITY OF PORTLAND
DEPARTMENT
HEADQUARTERS:

- Parks, Recreation & Facilities
- Public Works

RENOVATION PROJECT

212 Canco Road,
Portland

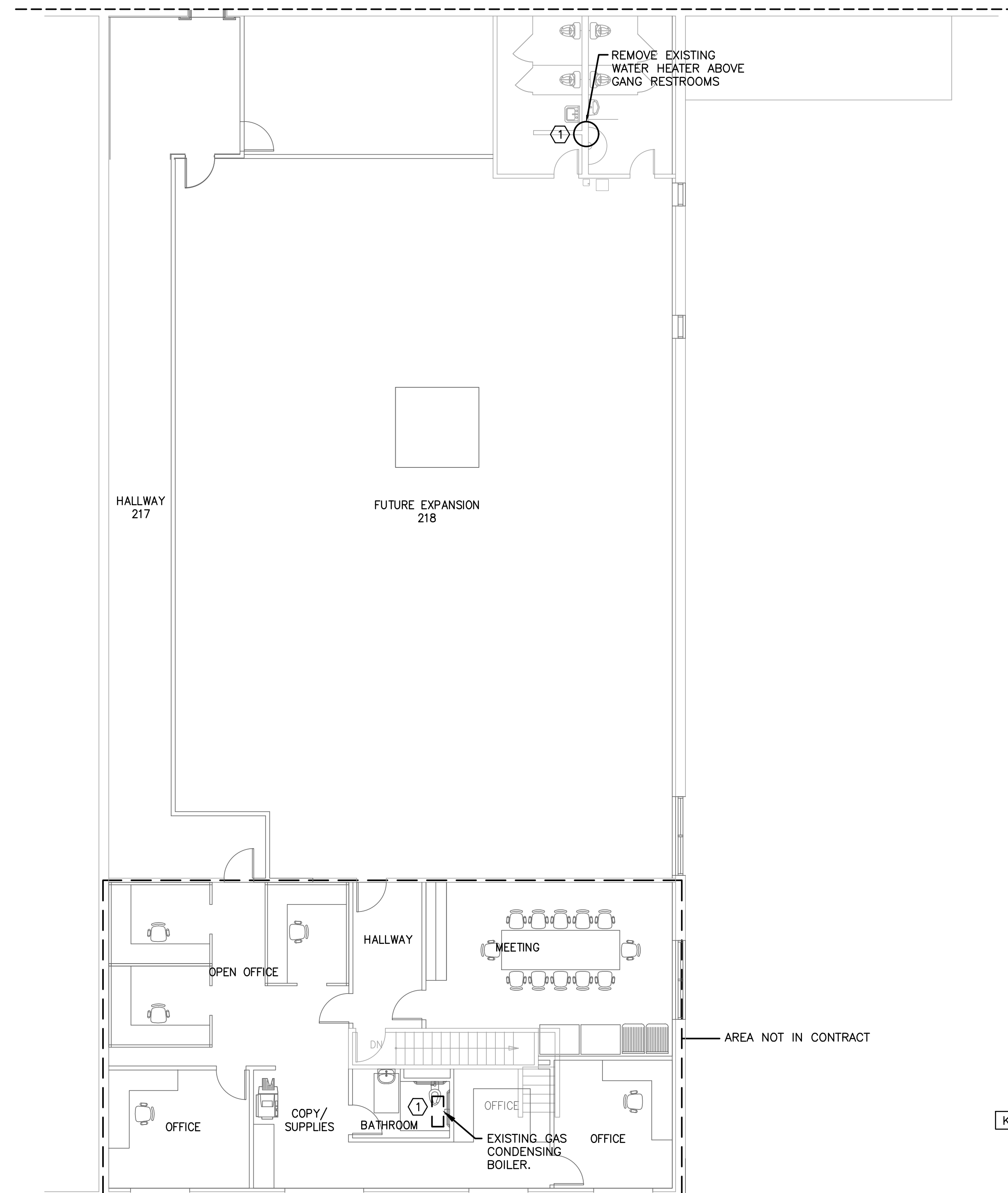
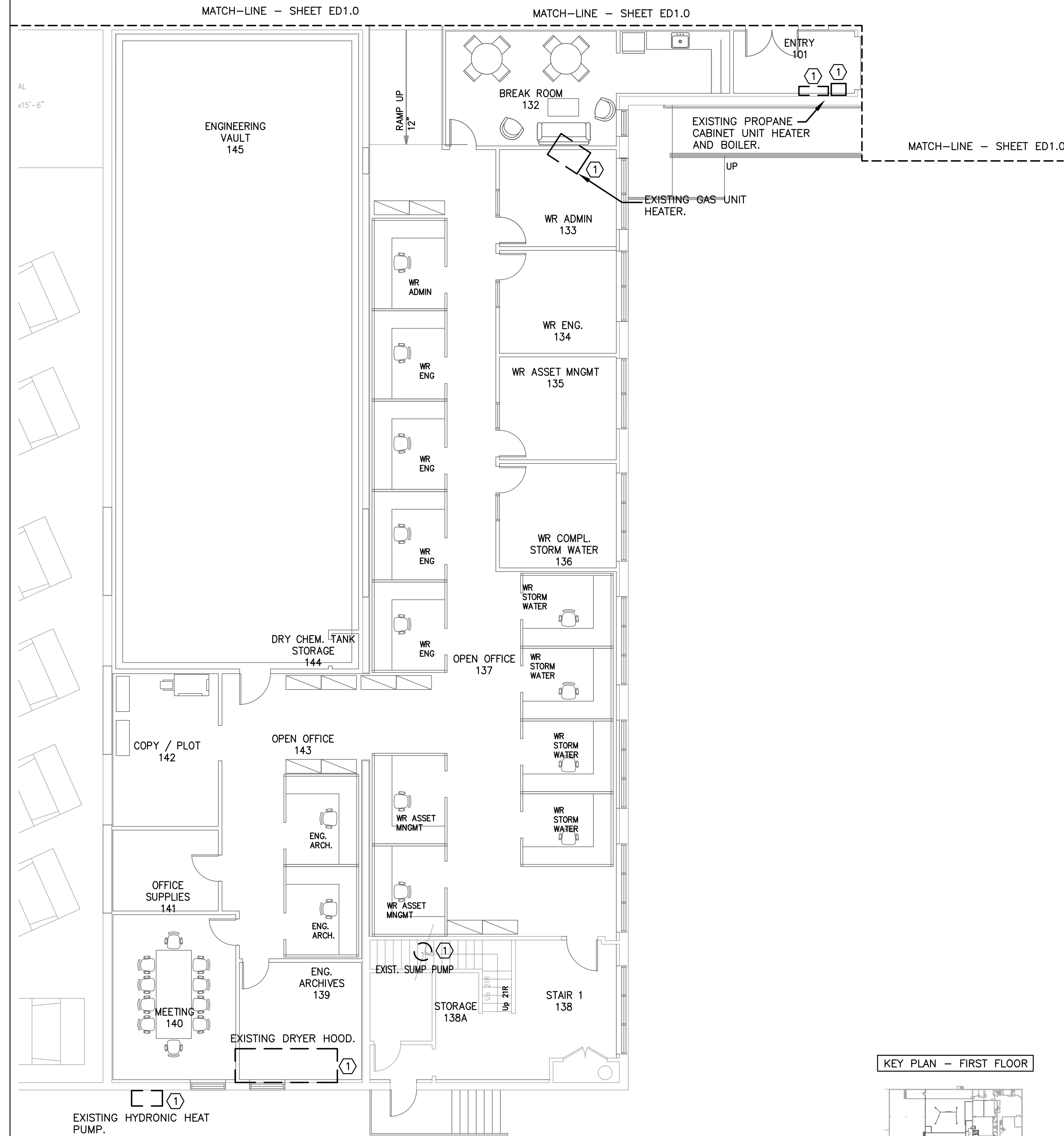
REVIEW SET
NOT FOR CONSTRUCTION

Scale: AS NOTED

ELECTRICAL
DEMOLITION PLAN -
(PARTIAL) FIRST
FLOOR

ED1.1

March 12, 2018



① ELECTRICAL DEMOLITION PLAN - (PARTIAL) FIRST FLOOR
SCALE: 1/8"=1'

② ELECTRICAL DEMOLITION PLAN - (PARTIAL) SECOND FLOOR
SCALE: 1/8"=1'