

5 Milk Street, Portland, ME 04101
207.774.4811 | wintonsscott.com

Structural Engineering:
STRUCTURAL INTEGRITY
CONSULTING ENGINEERS, INC.

46 Forest Avenue
Portland, ME 04101
T. 207.774.4614
structuralinteg.com

HVAC & Plumbing Engineering:
HOLBROOK ENGINEERING, LLC

52 Heath Rd
Saco, ME 04072
T. 207.283.9127
holbrookengineering.com

Electrical Engineering:
SWIFT CURRENT
ENGINEERING SERVICES

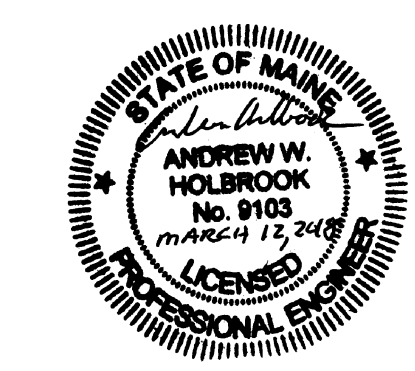
Royal River Center, Unit 8B
10 Forest Falls Drive
Yarmouth, ME 04096
T. 207.847.9280

CITY OF PORTLAND
DEPARTMENT
HEADQUARTERS:

-Parks, Recreation &
Facilities
-Public Works

RENOVATION PROJECT

212 Conco Road,
Portland



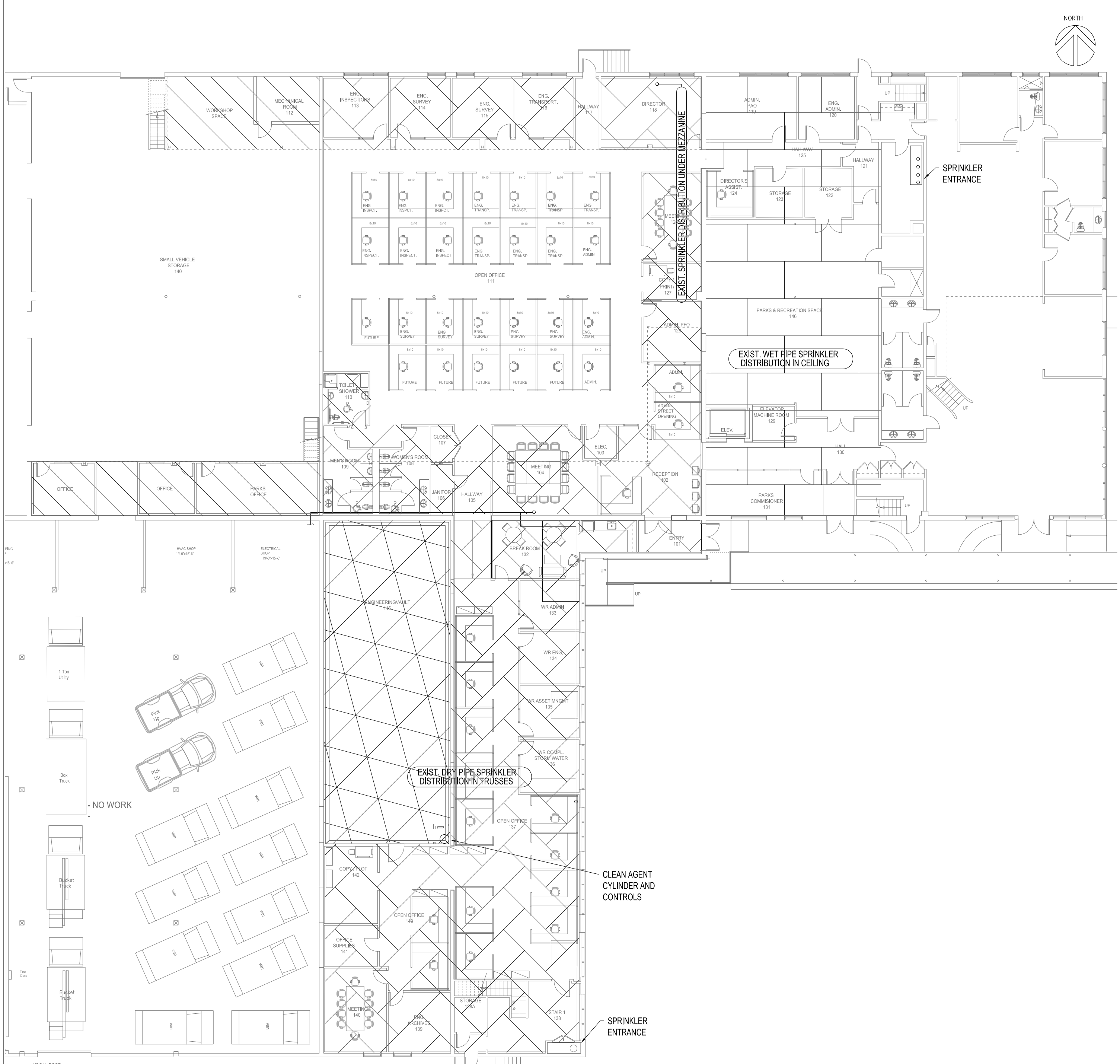
REVIEW SET

Scale: 1/16" = 1'-0"

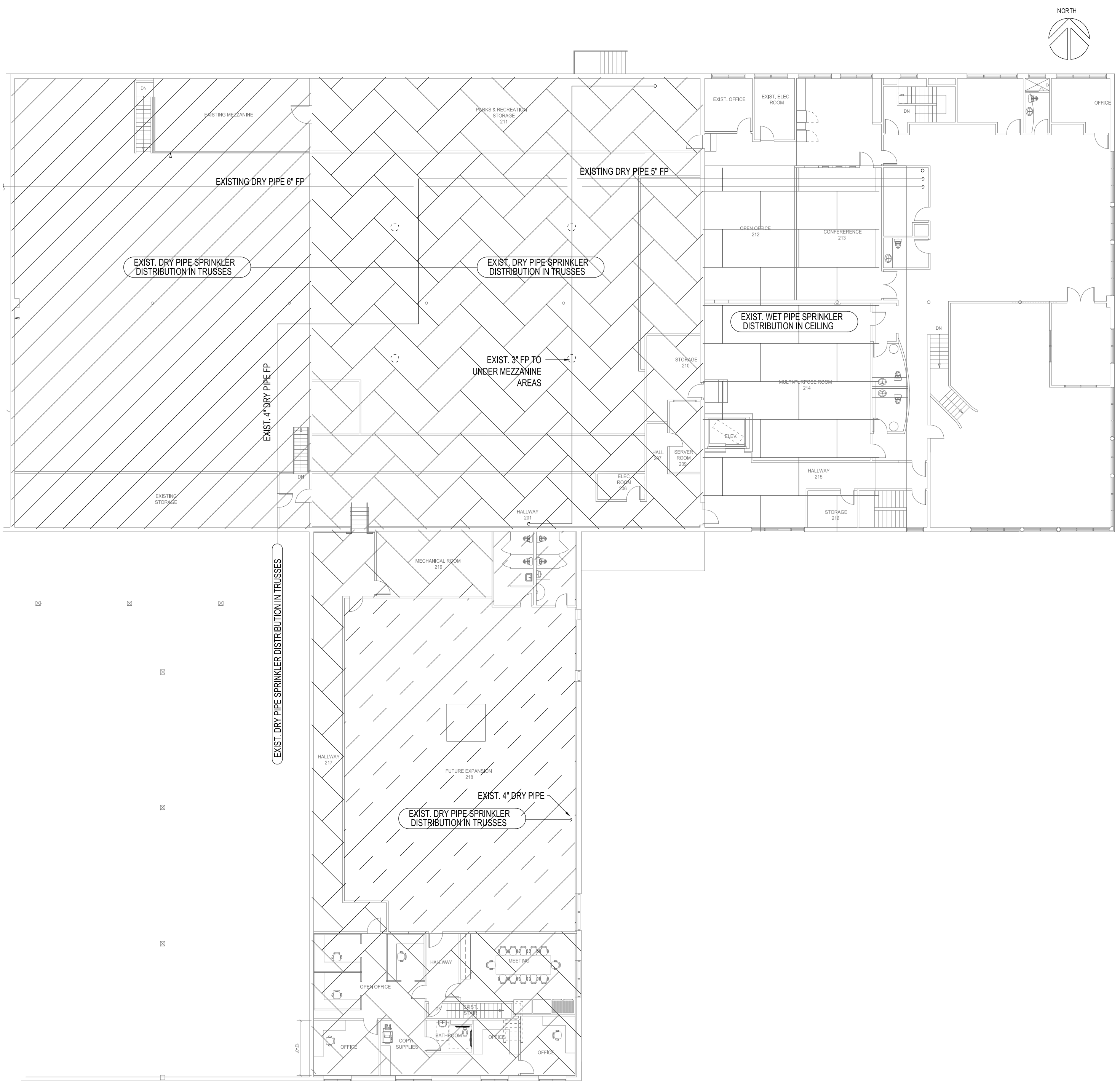
FIRE PROTECTION NOTES,
ABBREVIATIONS, SYMBOLS
AND AREA PLANS

FP1.0

March 7, 2018



FIRST FLOOR FIRE PROTECTION - COVERAGE AREAS
SCALE: 1/16"=1'-0"

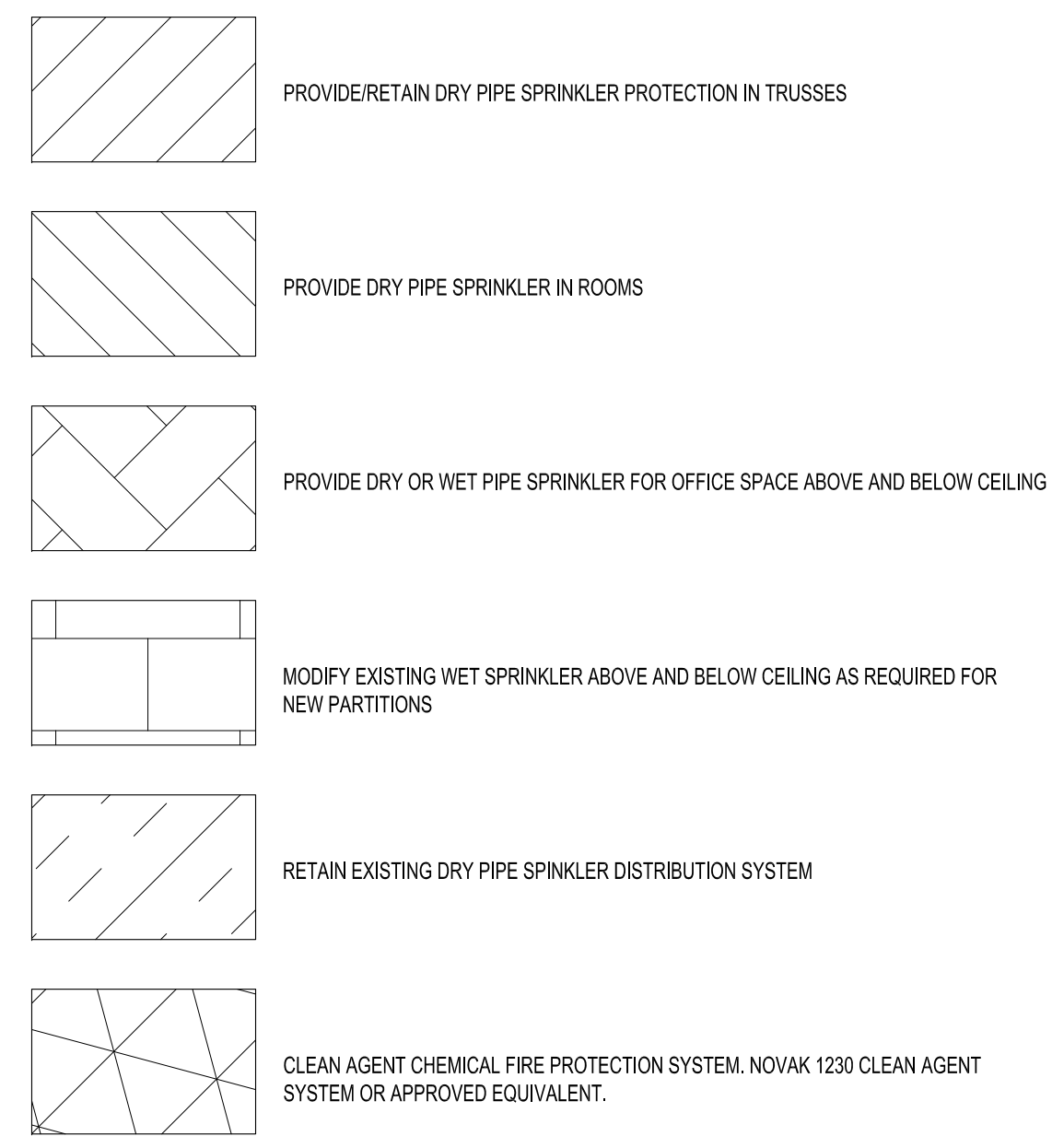


SECOND FLOOR FIRE PROTECTION - COVERAGE AREAS
SCALE: 1/16"=1'-0"

FIRE PROTECTION NOTES

- 1. THIS DRAWING INDICATES THE FIRE PROTECTION AREAS AND EXTENT OF COVERAGE. IT IS NOT A DESIGN DRAWING. THE FIRE PROTECTION CONTRACTOR IS RESPONSIBLE FOR A COMPLETE FIRE PROTECTION DESIGN AND INSTALLATION IN ACCORDANCE WITH THE MAINE STATE FIRE MARSHAL RULES AND REQUIREMENTS.
- 2. SEE PROJECT SPECIFICATIONS FOR ADDITIONAL MATERIAL, CONSTRUCTION, WORKMANSHIP, TESTING AND COMMISSIONING REQUIREMENTS. WHERE A CONFLICT EXISTS BETWEEN THE PROJECT DOCUMENTS AND THE RELEVANT CODES THE MORE STRINGENT REQUIREMENT SHALL APPLY.
- 3. ALL FIRE PROTECTION WORK TO BE DONE IN ACCORDANCE WITH THE GENERAL CONTRACTORS PHASING PLAN.
- 4. ALL FIRE PROTECTION WORK TO BE DONE IN ACCORDANCE WITH THE LATEST EDITIONS OF NFPA 101, NFPA 13 AND THE REQUIREMENTS OF THE MAINE STATE FIRE MARSHALS OFFICE.
- 5. FIRE PROTECTION CONTRACTOR SHALL ENGAGE THE PORTLAND WATER DISTRICT TO PERFORM A FLOW TEST AT THE NEAREST FIRE HYDRANT FOR DETERMINING WATER SUPPLY CAPABILITY.
- 6. MAINTAIN FIRE PROTECTION SERVICES TO SPACES OUTSIDE OF THE PROJECT SCOPE. COORDINATE TIMING AND DURATION WITH GENERAL CONTRACTOR AND BUILDING OWNER WHEN SYSTEM SHUTDOWNS ARE REQUIRED.
- 7. INSTALL ALL FIRE PROTECTION EQUIPMENT IN ACCORDANCE WITH THE MANUFACTURER'S RECOMMENDATIONS. WHERE CONFLICTS EXIST BETWEEN PROJECT DOCUMENTS AND MANUFACTURER'S RECOMMENDATIONS THE MORE STRINGENT REQUIREMENT SHALL APPLY.
- 8. CONFIRM ANY EQUIPMENT OR SYSTEMS TO BE REMOVED WITH THE OWNER BEFORE COMMENCING DEMOLITION.
- 9. DISPOSE OF REMOVED EQUIPMENT AND MATERIAL IN ACCORDANCE WITH STATE AND LOCAL REGULATIONS.
- 10. THE FIRE PROTECTION CONTRACTOR IS RESPONSIBLE FOR THE REPAIR OR REPLACEMENT OF ANY DAMAGE CAUSED BY THE FIRE PROTECTION CONTRACTOR TO ANY NEW OR EXISTING BUILDING SYSTEMS.
- 11. COORDINATE NEW INSTALLATIONS WITH THE GENERAL CONTRACTOR, STRUCTURAL, ELECTRICAL AND ARCHITECTURAL DESIGN. CONSULT STRUCTURAL ENGINEER BEFORE ANY MODIFICATIONS TO STRUCTURAL MEMBERS.
- 12. ALL MATERIALS USED FOR THE INSTALLATION OF THE FIRE PROTECTION SYSTEM SHALL BE CERTIFIED FOR USE IN SUCH SYSTEMS.
- 13. PROVIDE OFFSETS AS REQUIRED TO ROUTE PIPING AROUND OTHER BUILDING SYSTEMS AND EQUIPMENT.
- 14. MOST INTERIOR PARTITIONS ARE FULL HEIGHT. SEAL PENETRATIONS THROUGH PARTITIONS FOR SOUND. SEAL FIRE RATED PARTITIONS IN ACCORDANCE WITH UL APPROVED ASSEMBLY FOR THE ASSOCIATED FIRE RATINGS.
- 15. TIE-IN LOCATIONS TO EXISTING SYSTEMS ARE APPROXIMATE. FIRE PROTECTION CONTRACTOR TO DETERMINE EXACT TIE-IN LOCATION.
- 16. SEE DETAILS FOR TYPICAL INSTALLATIONS NOT SHOWN ON THE FIRE PROTECTION PLANS.
- 17. ALL FIRE PROTECTION PIPING IS TO BE CONCEALED IN WALLS, FLOORS AND CEILINGS UNLESS NOTED OTHERWISE. PROVIDE ACCESS PANELS WHERE REQUIRED.
- 18. COORDINATE WALL AND FLOOR PENETRATIONS WITH THE GENERAL CONTRACTOR.
- 19. INFILL AND PATCH EXISTING FIRE PROTECTION PENETRATIONS THAT ARE ABANDONED UNDER THIS PROJECT.
- 20. CEILING SPRINKLER HEADS SHALL BE RECESSED, COLOR WHITE IN EXPOSED FINISHED LOCATIONS, CEILING SPACES, FUTURE EXPANSION SPACE, MECHANICAL, SMALL VEHICLE, JANITOR AND ELEVATOR ROOMS FIRE PROTECTION CONTRACTOR MAY USE EXPOSED SPRINKLER HEADS.

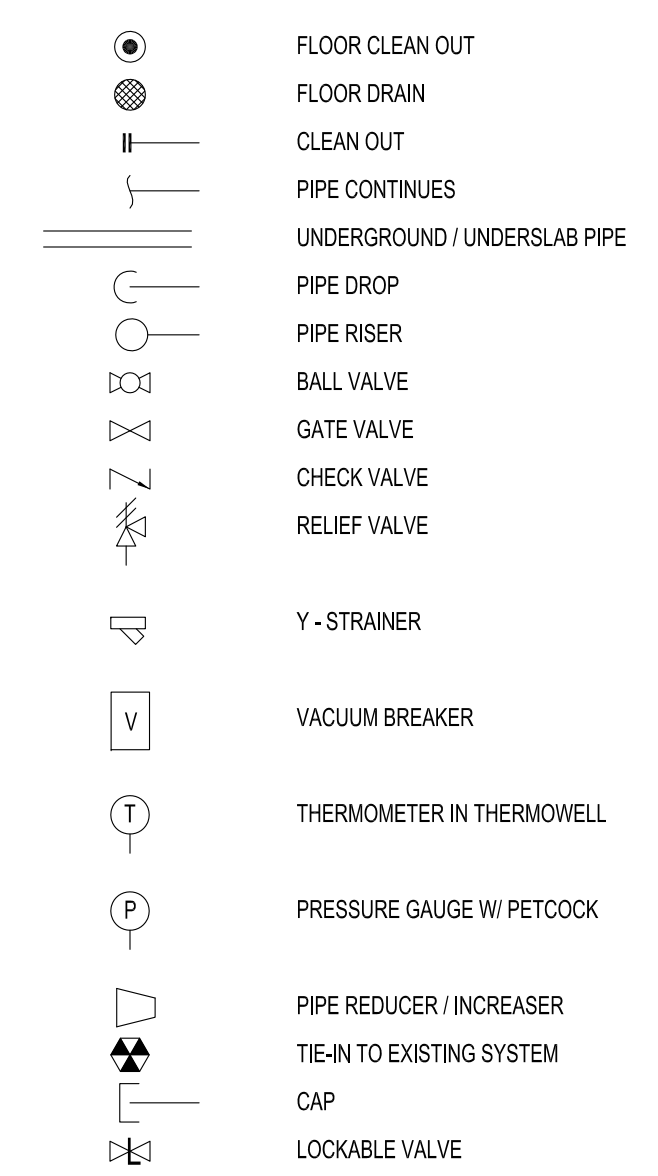
LEGEND



ABBREVIATIONS

AFF	ABOVE FLOOR FACE
BFF	BELOW FLOOR FACE
BTU	BRITISH THERMAL UNIT
BHP	BRAKE HORSEPOWER
CFM	CUBIC FEET PER MINUTE
CO	CLEAN OUT
DB	DRY BULB
F	DEGREE FAHRENHITE
FPW	FIRE PROTECTION WATER
MBH	1000 BTU PER HOUR
NTS	NOT TO SCALE
OA	OUTSIDE AIR
PEX	CROSS LINKED POLYETHYLENE
RPZ	REDUCED PRESSURE ZONE BACKFLOW PREVENTER
SP	STATIC PRESSURE
TSP	TOTAL STATIC PRESSURE
WB	WET BULB
WC	WATER COLUMN

SYMBOLS



STATE FIRE MARSHAL REVIEW
03/22/2018