

FINISH SCHEDULE

Room Name	Floor	Base	Walls	Ceiling	Remarks
Entry 101	Entry mat	4" rubber	Ptd GWB	ACT	
Reception 102	Carpet	4" rubber	Ptd GWB	ACT	
Electrical 103	Exist. Conc.	4" rubber	Ptd GWB	PTD Struct	
Meeting 104	Carpet	4" rubber	Ptd GWB	ACT	
Hallway 105	Carpet	4" rubber	Ptd GWB	ACT	
Janitor's 106	Exist. Conc.	4" rubber	Ptd GWB	PTD Struct	
Closet 107	Carpet	4" rubber	Ptd GWB	PTD GWB	
Women's Room 108	CT	4" CT	Ptd GWB	ACT	
Men's Room 109	CT	4" CT	Ptd GWB	ACT	
Toilet / Shower 110	CT	4" CT	Ptd GWB	MR-ACT	
Open Office 111	Carpet	4" rubber	Ptd GWB	ACT	
Mechanical 112	Exist. Conc.	no base	CMU	PTD Struct	
Office 113	Carpet	4" rubber	Ptd GWB	ACT	
Office 114	Carpet	4" rubber	Ptd GWB	ACT	
Office 115	Carpet	4" rubber	Ptd GWB	ACT	
Office 116	Carpet	4" rubber	Ptd GWB	ACT	
Hallway 117	Carpet	4" rubber	Ptd GWB	ACT	
Office 118	Carpet	4" rubber	Ptd GWB	ACT	
Office 119	Carpet	4" rubber	Ptd GWB	Exist. ACT	
Office 120	Carpet	4" rubber	Ptd GWB	Exist. ACT	
Hallway 121	Carpet	4" rubber	Ptd GWB	Exist. ACT	
Storage 122	Carpet	4" rubber	Ptd GWB	Exist. ACT	
Storage 123	Carpet	4" rubber	Ptd GWB	Exist. ACT	
Open Office 124	Carpet	4" rubber	Ptd GWB	Exist. ACT	
Hallway 125	Carpet	4" rubber	Ptd GWB	Exist. ACT	
Meeting 126	Carpet	4" rubber	Ptd GWB	ACT	
Copy / Print 127	VCT	4" rubber	Ptd GWB	ACT	
Office 128	Carpet	4" rubber	Ptd GWB	ACT	
Elevator Machine Room 129	VCT	4" rubber	Ptd GWB	PTD GWB	
Hall 130	Carpet	4" rubber	Ptd GWB	Exist. ACT	
Office 131	Carpet	4" rubber	Ptd GWB	Exist. ACT	
Break Room 132	VCT	4" rubber	Ptd GWB	ACT	
Office 133	Carpet	4" rubber	Ptd GWB	ACT	
Office 134	Carpet	4" rubber	Ptd GWB	ACT	
Office 135	Carpet	4" rubber	Ptd GWB	ACT	
Office 136	Carpet	4" rubber	Ptd GWB	ACT	
Open Office 137	Carpet	4" rubber	Ptd GWB	ACT	
Stair 1 138	Exist. Conc.	Exist. rubber	Patch & paint exist. GWB	Exist. ACT	
Storage 138A	Exist. Conc.	4" rubber	Patch & paint exist. GWB	Ptd GWB	
Office 139	Carpet	4" rubber	Ptd GWB	ACT	
Meeting 140	Carpet	4" rubber	Ptd GWB	ACT	
Office Supplies 141	Carpet	4" rubber	Ptd GWB	ACT	
Copy / Plot 142	Carpet	4" rubber	Ptd GWB	ACT	
Open Office 143	Carpet	4" rubber	Ptd GWB	ACT	
Dry Chemical Tank Storage 144	Exist. Conc.	4" rubber	Ptd GWB / precast conc.	Precast conc.	
Engineering Vault 145	Carpet	4" rubber	Precast conc.	Precast conc.	
Parks & Recreation Space 146	Carpet	4" rubber	Ptd GWB	Exist. ACT	

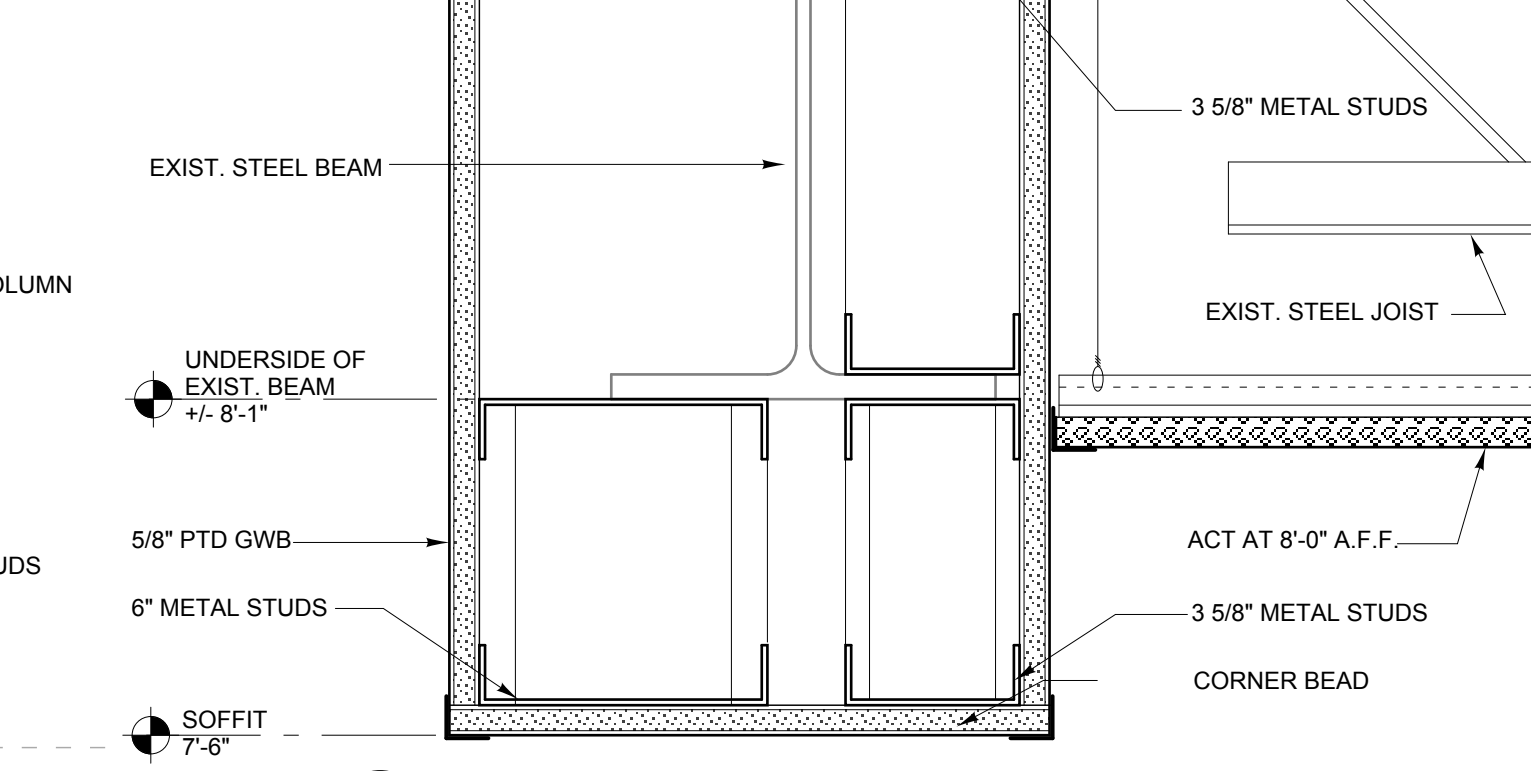
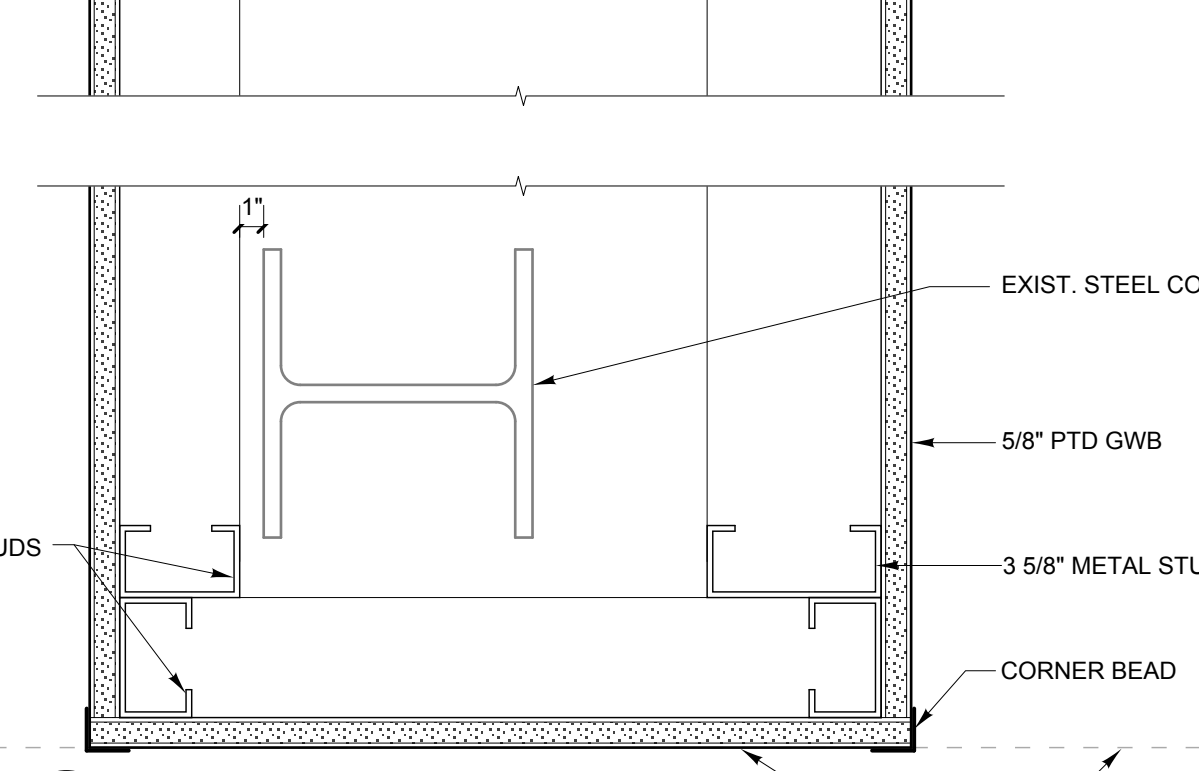
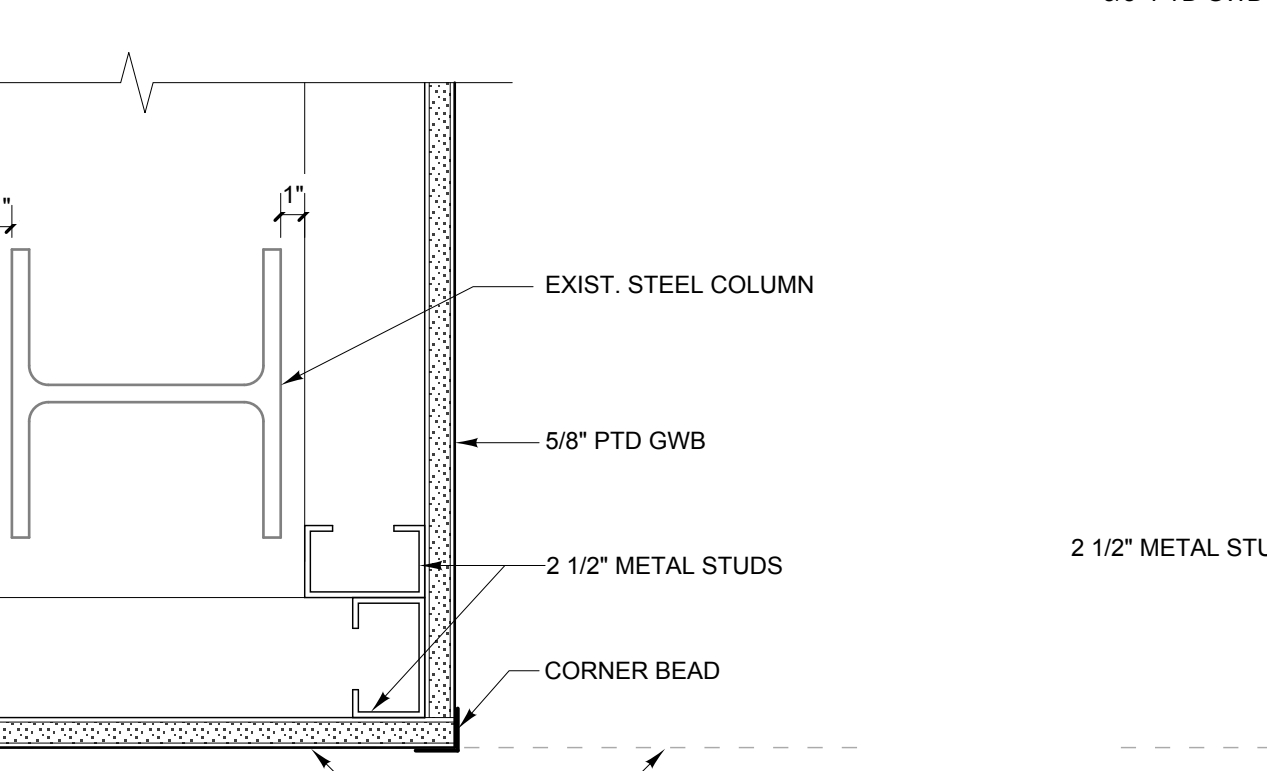
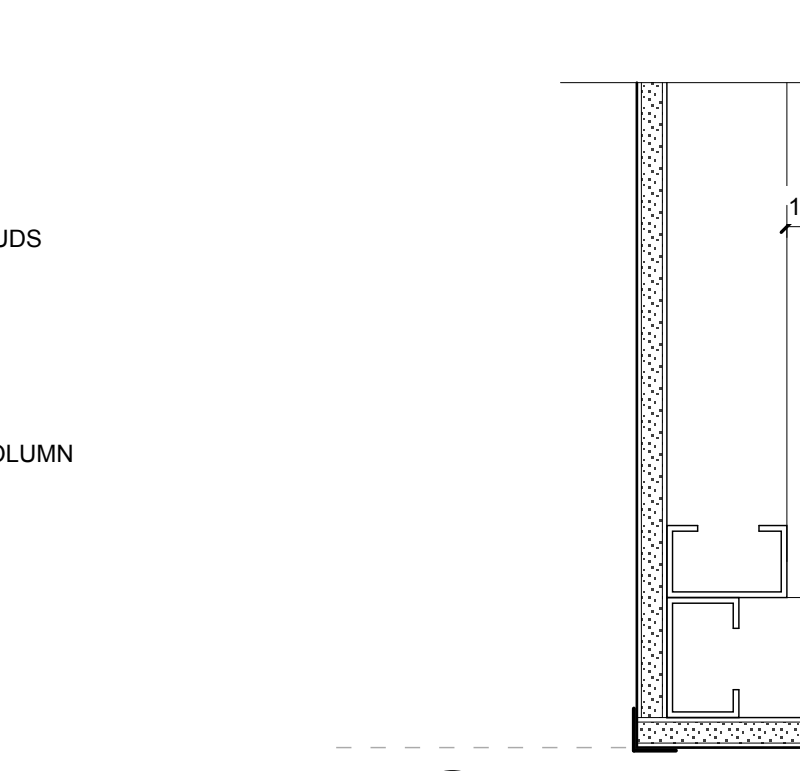
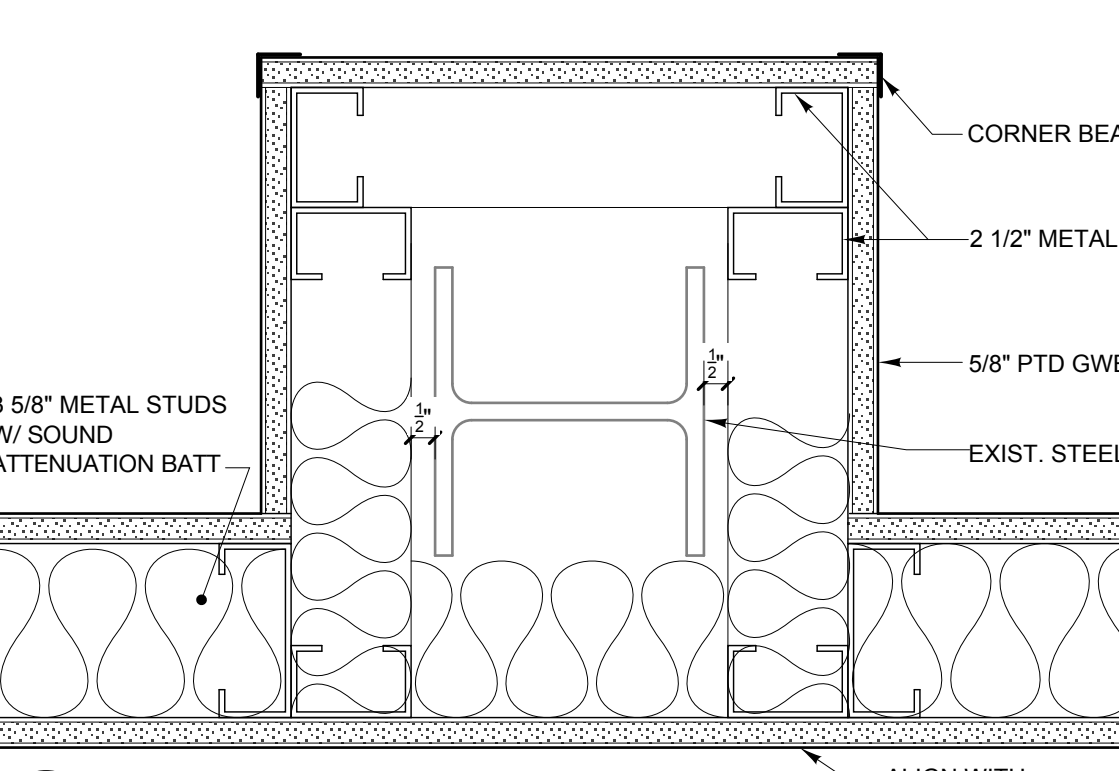
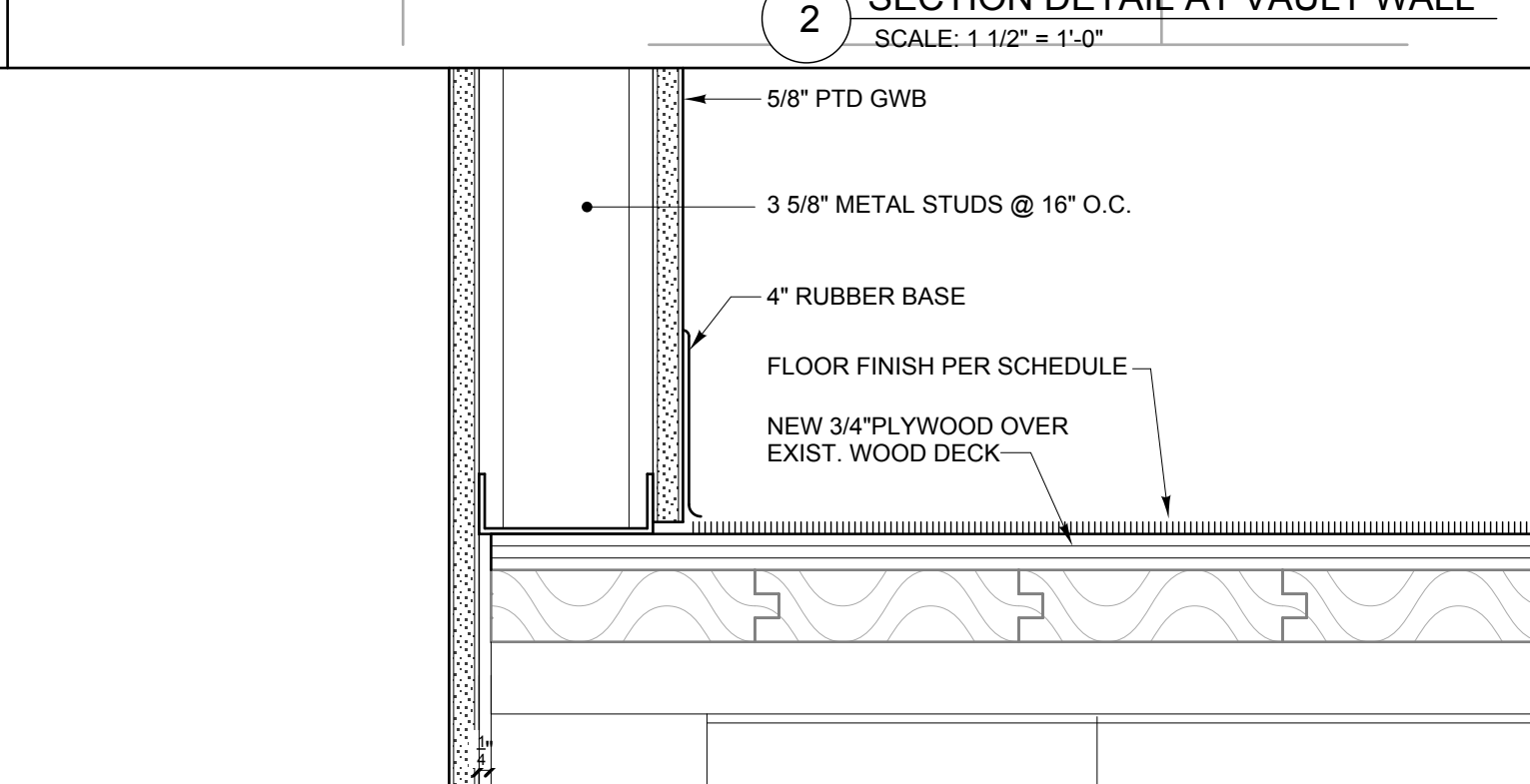
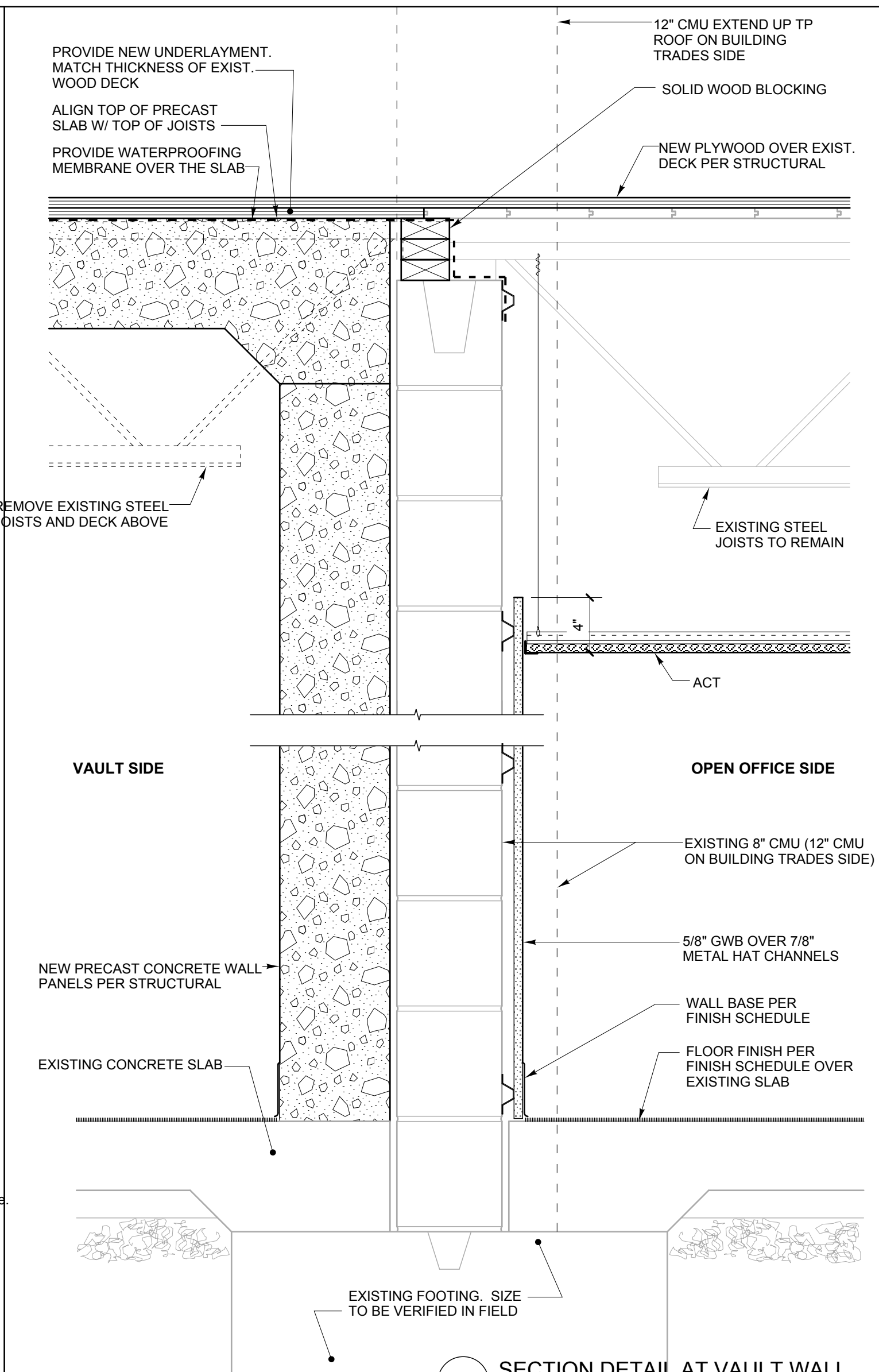
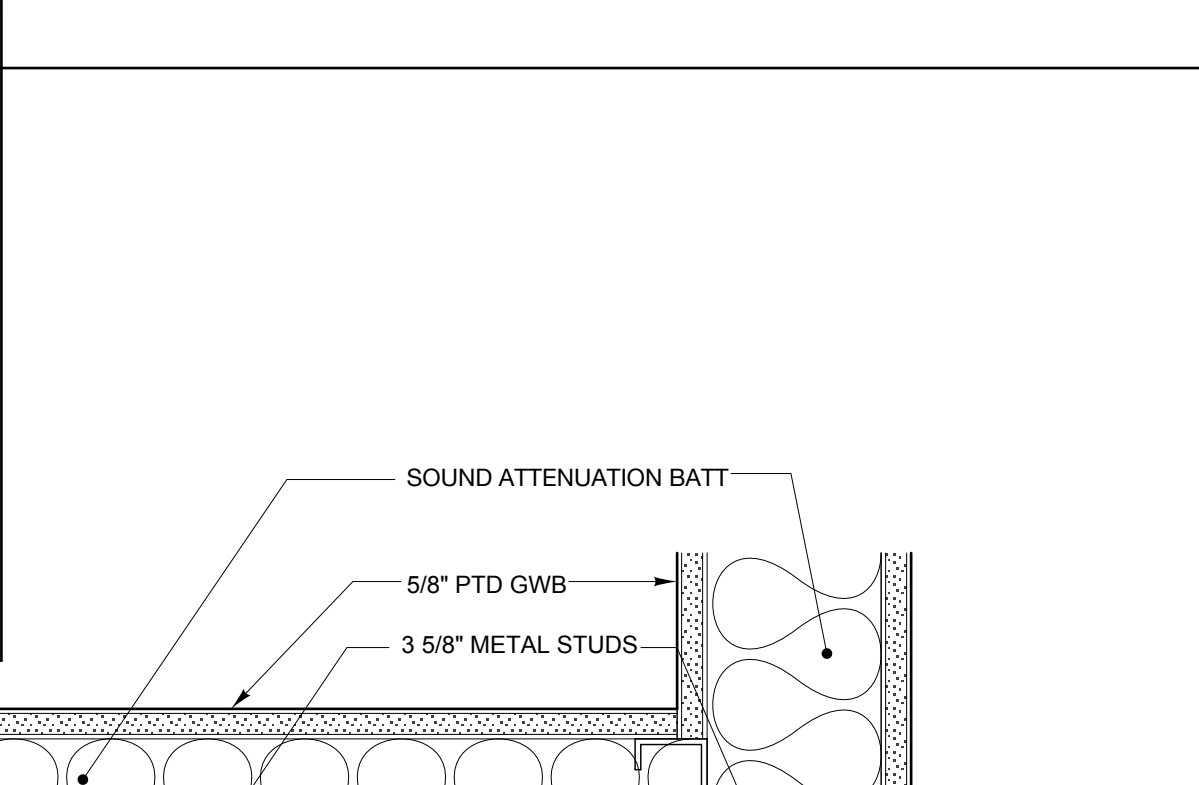
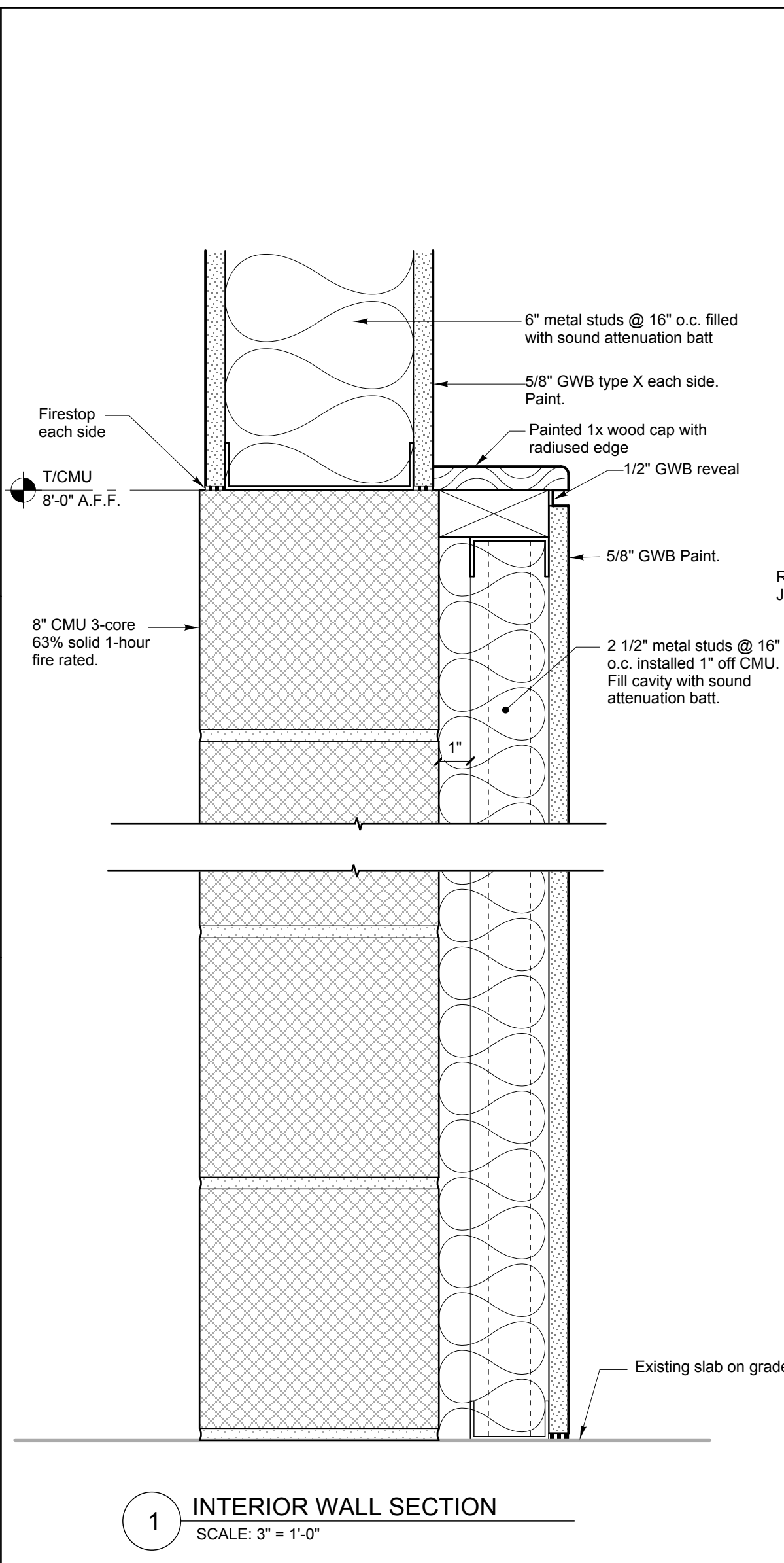
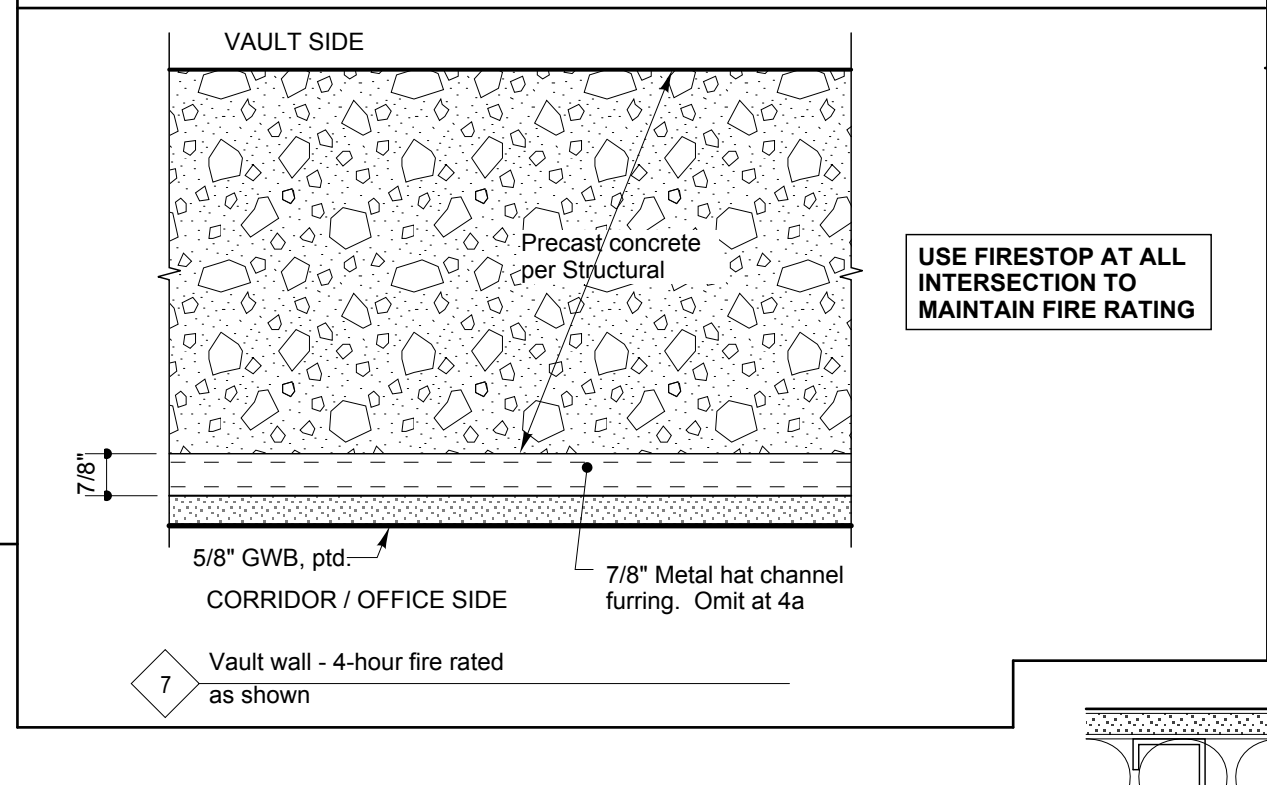
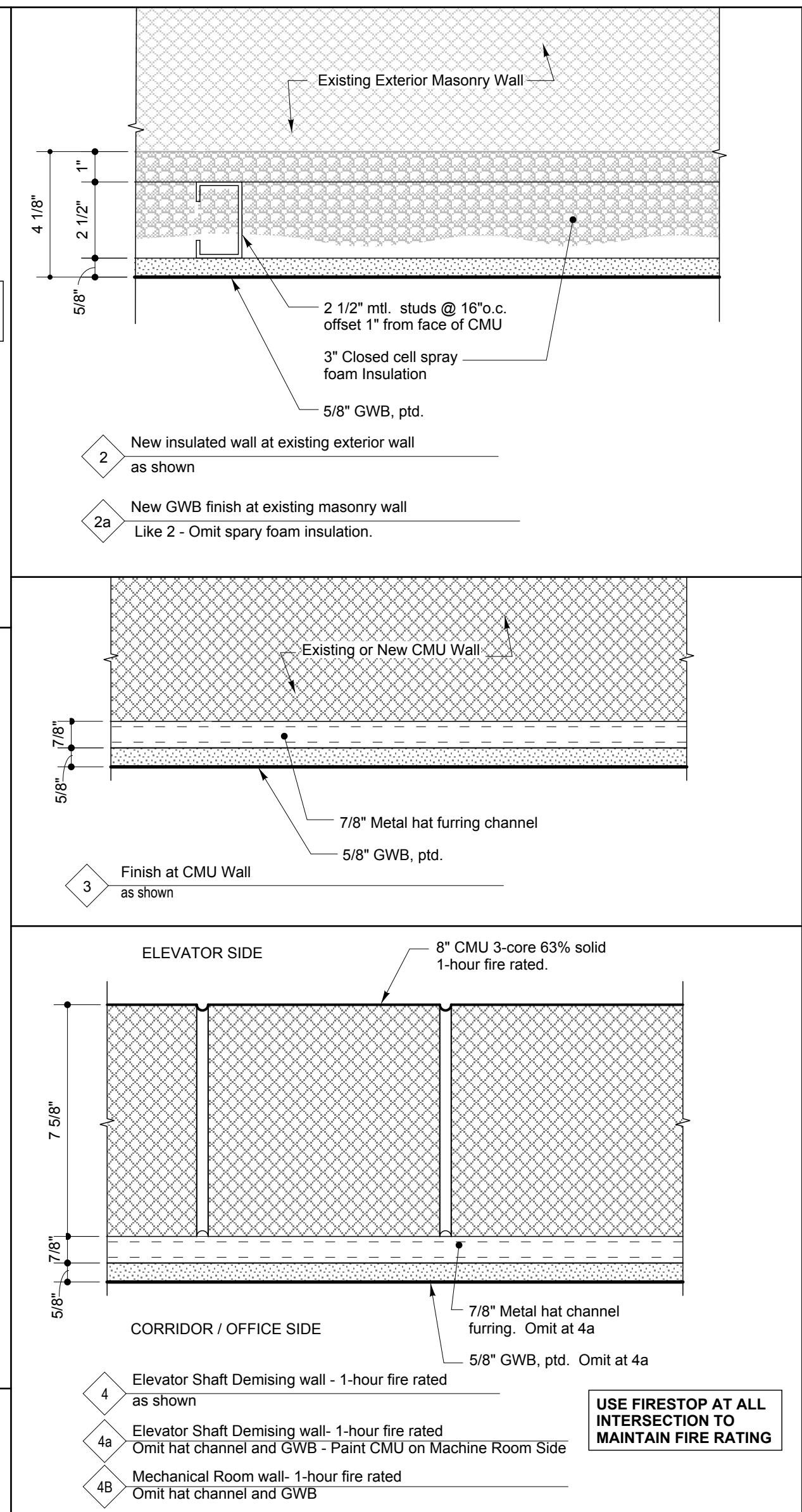
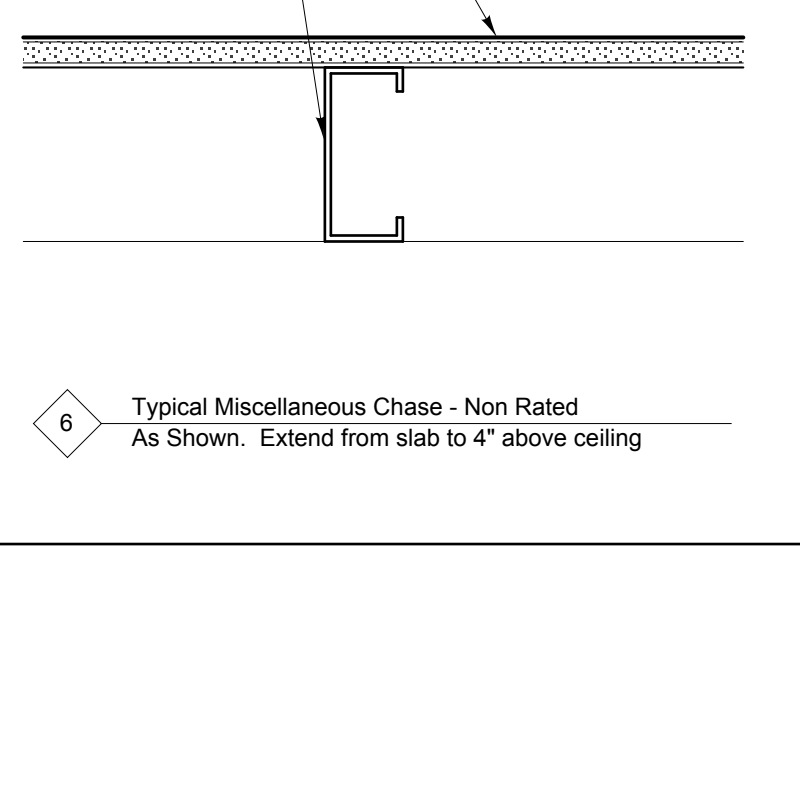
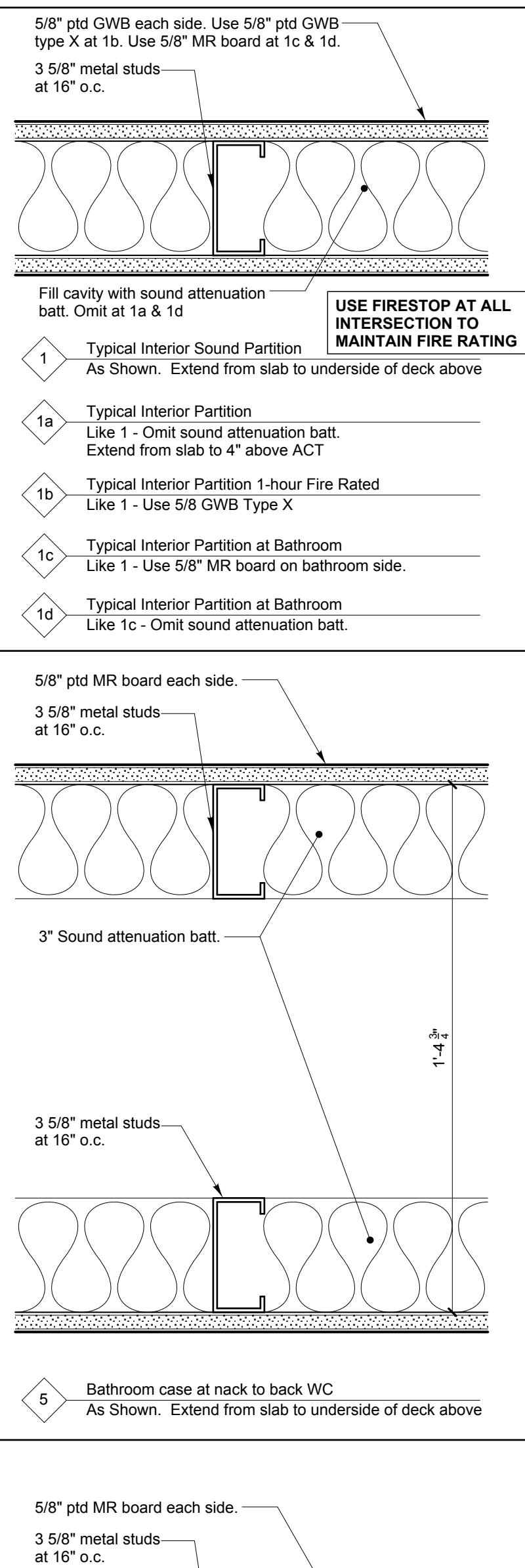
SECOND FLOOR

Room Name	Floor	Base	Walls	Ceiling	Remarks
Hallway 201	Carpet	4" rubber	Ptd GWB	ACT	
Electrical Room 206	VCT	4" rubber	Ptd GWB	PTD Struct	
Hall 207	Carpet	4" rubber	Ptd GWB	ACT	
Server Room 209	Exist.	Exist.	Exist.	Exist.	
Storage 210	VCT	4" rubber	Ptd GWB	PTD Struct	
Storage 211	VCT	4" rubber	Ptd GWB	PTD Struct	
Open Office 212	Exist. Carpet	4" rubber on new wall	Ptd GWB	Exist. ACT	
Conference 213	Exist. Carpet	4" rubber on new wall	Ptd GWB	Exist. ACT	
Multi-Purpose Room 214	Exist. Carpet	4" rubber on new wall	Ptd GWB	Exist. ACT	
Hallway 215	Exist. Carpet	4" rubber on new wall	Ptd GWB	Exist. ACT	
Storage 216	Exist. Carpet	4" rubber on new wall	Ptd GWB	Exist. ACT	
Hallway 217	Carpet	4" rubber	Ptd GWB	ACT	
Future Expansion 218			No finish		
Mechanical Room 219	VCT	4" rubber	Ptd GWB	PTD Struct	

ABBREVIATIONS

- CT Ceramic Tile
- GWB Gypsum Wall Board
- ACT Acoustical Ceiling Tile
- MR-ACT Moisture Resistant Acoustical Ceiling Tile
- SWC Suspended Wood Ceiling
- PTD Painted

PARTITION TYPES



WSA
WINTON SCOTT ARCHITECTS
5 Milk Street, Portland, ME 04101
207.774.4811 | wintonscott.com

Structural Engineering:
STRUCTURAL INTEGRITY CONSULTING ENGINEERS, INC.
46 Forest Avenue
Portland, ME 04101
T. 207.283.9127
structuralinteg.com

HVAC & Plumbing Engineering:
HOLBROOK ENGINEERING, LLC
52 Heath Road
Saco, ME 04072
T. 207.283.9127
holbrookengineering.com

Electrical Engineering:
SWIFT CURRENT ENGINEERING SERVICES
Royal River Center, Unit 8B
10 Forest Falls Drive
Yarmouth, ME 04096
T. 207.847.9280

Winton Scott
REGISTERED ARCHITECT
WINTON F. SCOTT, JR.
No. 793
STATE OF MAINE

CITY OF PORTLAND DEPARTMENT HEADQUARTERS:
-Parks, Recreation & Facilities
-Public Works
RENOVATION PROJECT
212 Canco Road, Portland

REVIEW SET NOT FOR CONSTRUCTION

FINISH SCHEDULE & PARTITION TYPES

A6.1