

Structural Engineering:
STRUCTURAL INTEGRITY CONSULTING ENGINEERS, INC.

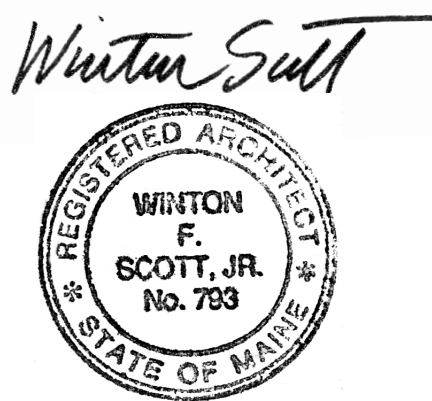
46 Forest Avenue
 Portland, ME 04101
 T. 207.774.4614
 structuralinteg.com

HVAC & Plumbing Engineering:
HOLBROOK ENGINEERING, LLC

T. 207.283.9127
 holbrookengineering.com

Electrical Engineering:
SWIFT CURRENT ENGINEERING SERVICES

Royal River Center, Unit 8B
 10 Forest Falls Drive
 Yarmouth, ME 04096
 T. 207.847.9280



CITY OF PORTLAND DEPARTMENT HEADQUARTERS:

-Parks, Recreation & Facilities
 -Public Works

RENOVATION PROJECT

212 Canco Road,
 Portland

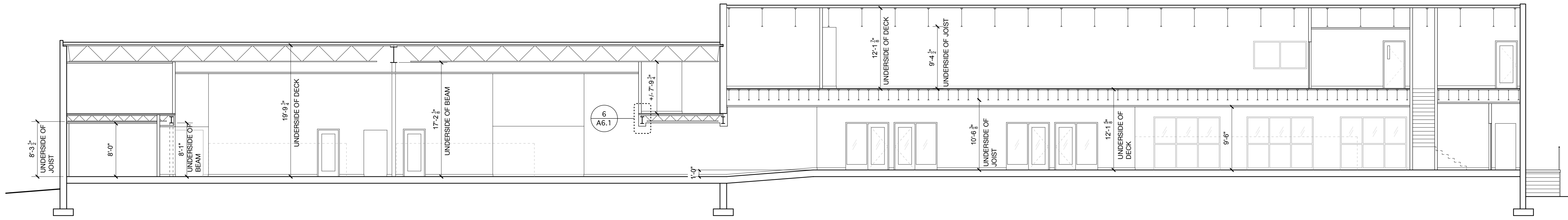
REVIEW SET NOT FOR CONSTRUCTION

Scale: 1/8" = 1'-0"

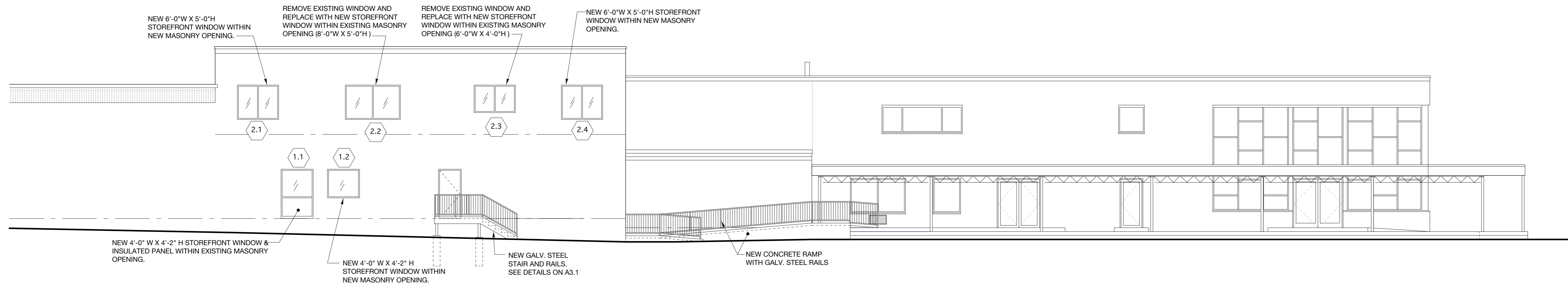
BUILDING SECTION & ELEVATIONS

A2.1

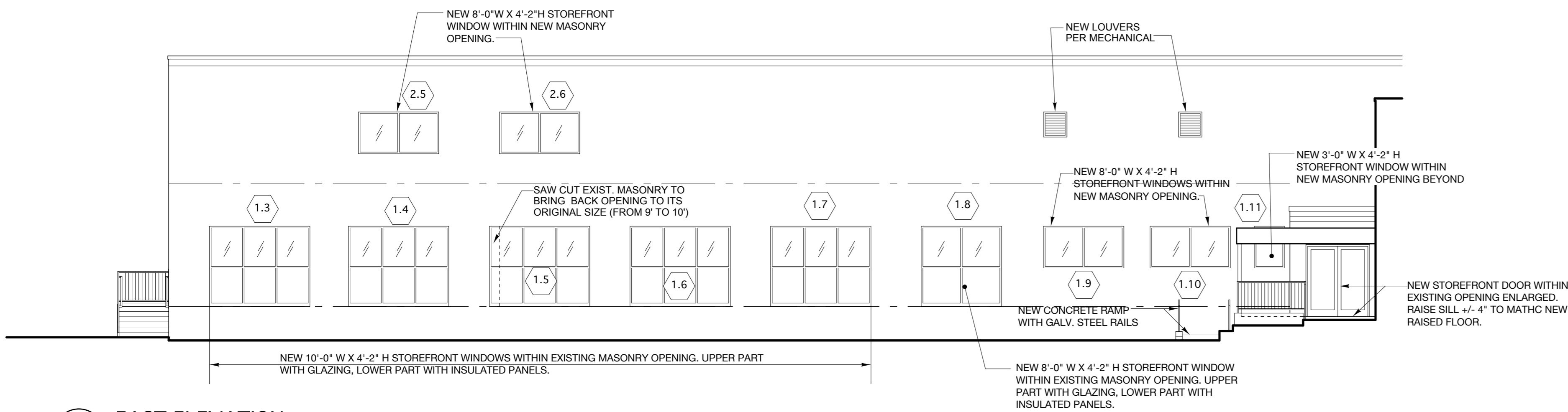
March 12, 2018



1 BUILDING SECTION
 1/8" = 1'-0"



2 SOUTH ELEVATION
 1/8" = 1'-0"



3 EAST ELEVATION
 1/8" = 1'-0"