

Structural Engineering:  
**STRUCTURAL INTEGRITY CONSULTING ENGINEERS, INC.**

46 Forest Avenue  
Portland, ME 04101  
T. 207.774.4614  
structuralinteg.com

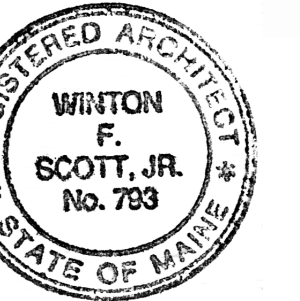
HVAC & Plumbing Engineering:  
**HOLBROOK ENGINEERING, LLC**

52 Heath Road  
Saco, ME 04072  
T. 207.283.9127  
holbrookengineering.com

Electrical Engineering:  
**SWIFT CURRENT ENGINEERING SERVICES**

Royal River Center, Unit 8B  
10 Forest Falls Drive  
Yarmouth, ME 04096  
T. 207.847.9280

*Winton Scott*



**CITY OF PORTLAND DEPARTMENT HEADQUARTERS:**

**-Parks, Recreation & Facilities  
-Public Works**

**RENOVATION PROJECT**

212 Canco Road,  
Portland

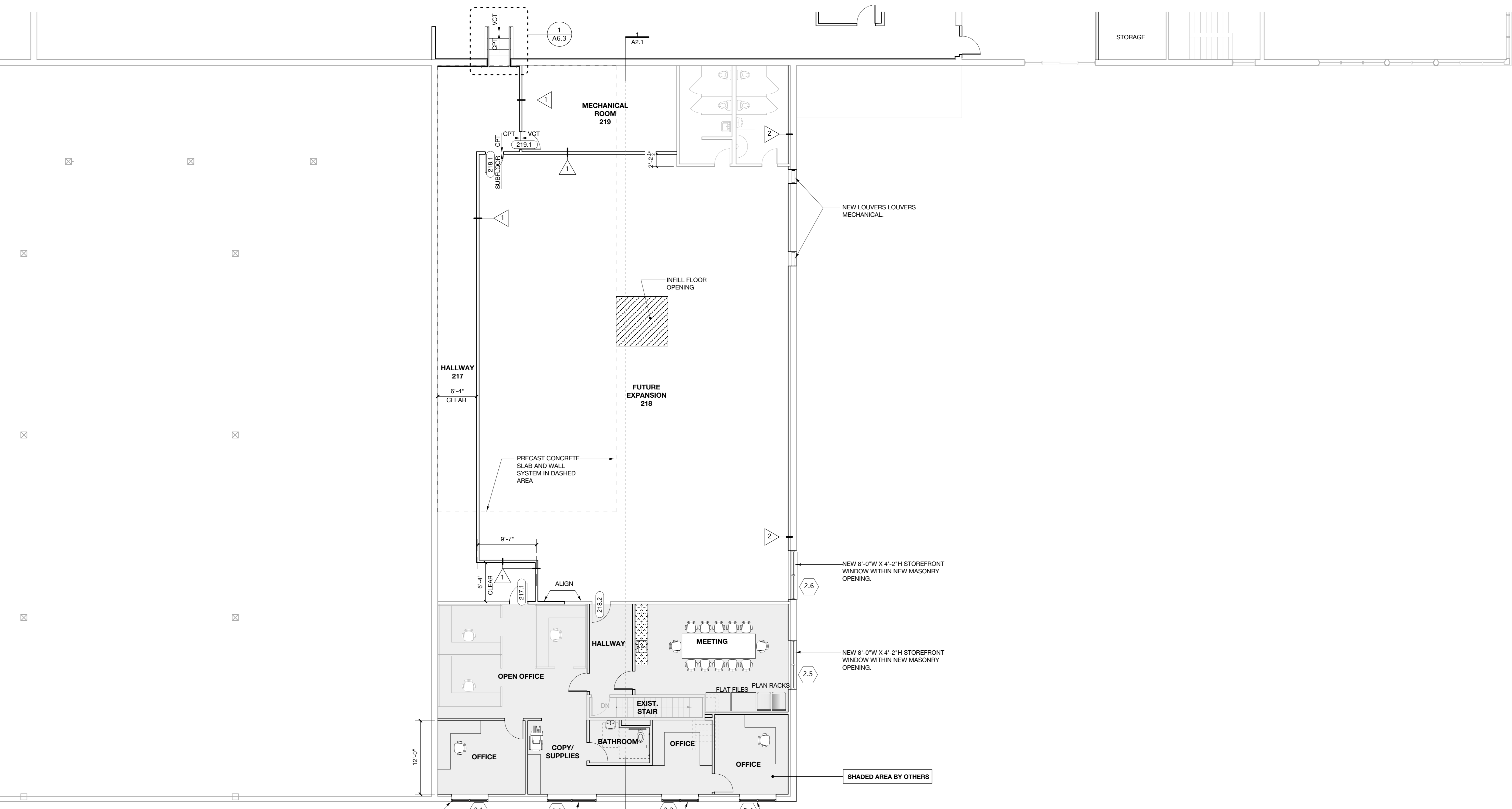
**REVIEW SET  
NOT FOR  
CONSTRUCTION**

Scale: 1/8" = 1'-0"

**SECOND FLOOR PROPOSED PLAN SOUTH SECTION**

**A1.2b**

March 12, 2018



NEW 6'-0"W X 5'-0"H STOREFRONT WINDOW WITHIN NEW MASONRY OPENING.  
REMOVE EXISTING WINDOW AND REPLACE WITH NEW STOREFRONT WINDOW WITHIN EXISTING MASONRY OPENING (8'-0"W X 5'-0"H)  
REMOVE EXISTING WINDOW AND REPLACE WITH NEW STOREFRONT WINDOW WITHIN EXISTING MASONRY OPENING (6'-0"W X 4'-0"H)  
NEW 6'-0"W X 5'-0"H STOREFRONT WINDOW WITHIN NEW MASONRY OPENING.  
NEW 6'-0"W X 4'-2"H STOREFRONT WINDOW WITHIN NEW MASONRY OPENING.  
NEW 8'-0"W X 4'-2"H STOREFRONT WINDOW WITHIN NEW MASONRY OPENING.  
NEW 8'-0"W X 4'-2"H STOREFRONT WINDOW WITHIN NEW MASONRY OPENING.  
SHADED AREA BY OTHERS

**SECOND FLOOR PROPOSED PLAN - SOUTH SECTION**

1/8" = 1'-0"

NEW WORK GENERAL NOTES		NEW WORK LEGEND	
1-	DIMENSIONS ARE TO CENTERLINE OF NEW PARTITIONS AND FACE OF EXISTING PARTITIONS OR EXISTING MASONRY UNLESS NOTED OTHERWISE.		CMU WALL / INFILL
			DRYWALL & METAL STUDS PARTITION
			CONCRETE PATCH
			MILLWORK (COUNTER / SHELVING)
			INDICATES WORK BY OTHERS (N.I.C)
			INDICATES WORK BY ADD ALTERNATE

NORTH

