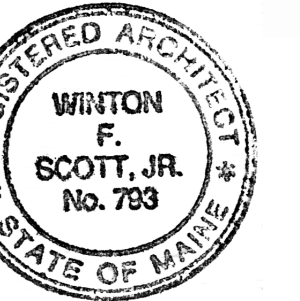


Winton Scott



**CITY OF PORTLAND
DEPARTMENT
HEADQUARTERS:**

**-Parks, Recreation &
Facilities
-Public Works**

RENOVATION PROJECT

212 Canco Road,
Portland

**REVIEW SET
NOT FOR
CONSTRUCTION**

Scale: 1/8" = 1'-0"

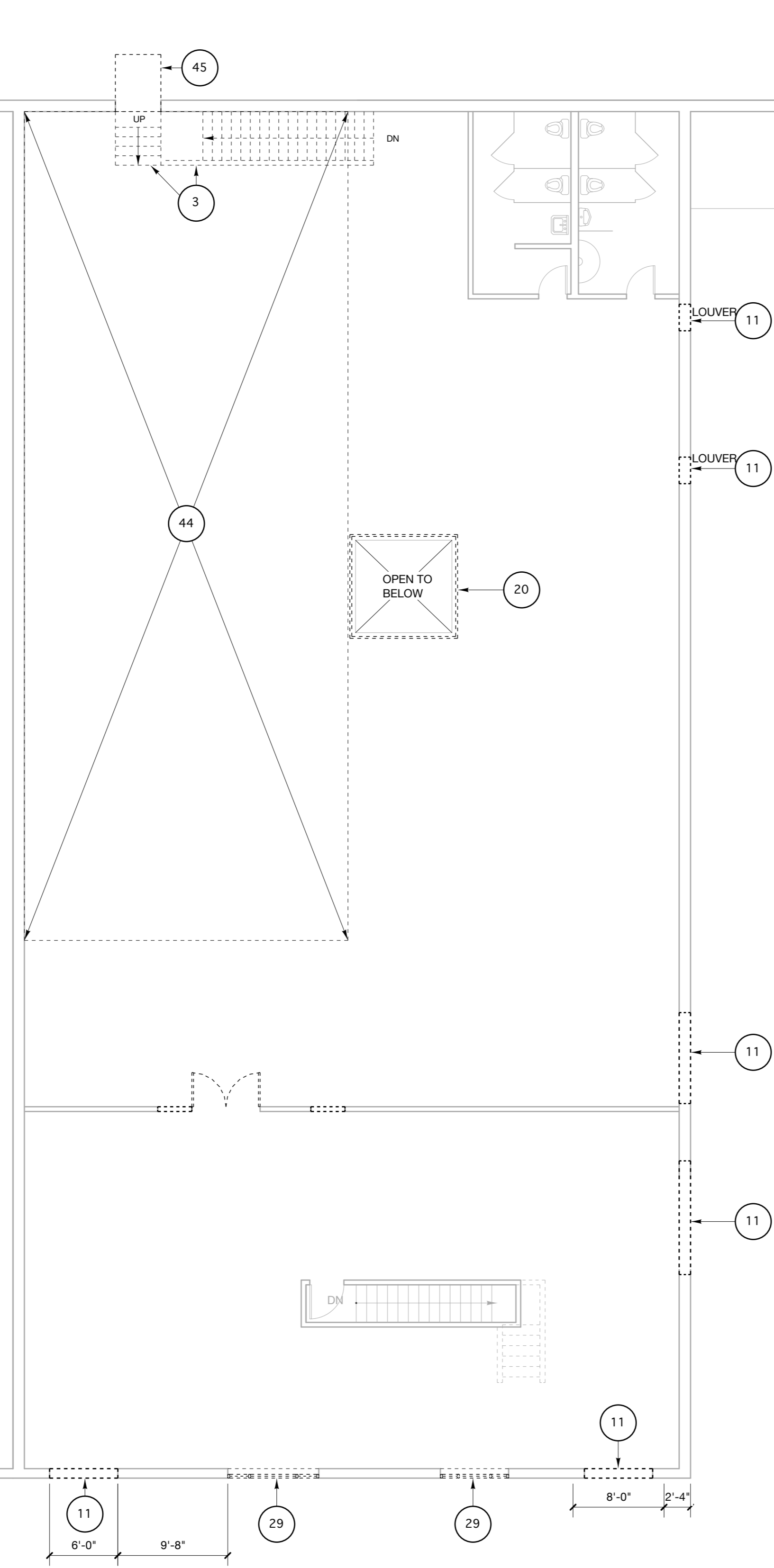
SECOND FLOOR
REMOVALS PLAN
SOUTH SECTION

D1.2b

March 12, 2018

REMOVALS NOTES

- 1- REMOVE EXISTING DRYWALL PARTITION AND ALL ASSOCIATED ELEMENTS INCLUDING BUT NOT LIMITED TO DOORS, FRAMES, ELECTRICAL OUTLETS, LIGHT SWITCHES, THERMOSTATS, WALL BASE, ETC.
- 2- REMOVE EXISTING PLUMBING FIXTURES AND RELATED PIPING COMPLETE.
- 3- REMOVE EXISTING WOOD STAIR COMPLETE.
- 4- REMOVE EXISTING COUNTER AND CABINETS COMPLETE.
- 5- REMOVE EXISTING DOOR AND FRAME AND PORTION OF MASONRY WALL IN PREPARATION FOR INSTALLATION OF NEW DOOR AND FRAME.
- 6- REMOVE EXISTING DRYWALL LOW PARTITION COMPLETE. EXISTING COLUMNS TO REMAIN.
- 7- REMOVE EXISTING DUCTWORK AND EQUIPMENT COMPLETE. VERIFY THAT IT IS NOT SERVING THE OCCUPIED SPACES.
- 8- REMOVE EXISTING STEEL COLUMN IN PREPARATION FOR NEW LAYOUT. PROVIDE SHORING AS NECESSARY.
- 9- REMOVE EXISTING WOOD POSTS IN PREPARATION FOR NEW LAYOUT. PROVIDE SHORING AS NECESSARY.
- 10- REMOVE PORTION OF EXISTING MASONRY WALL FOR NEW OPENING. PROVIDE SHORING AS NECESSARY.
- 11- REMOVE PORTION OF EXISTING MASONRY WALL IN PREPARATION FOR INSTALLATION OF NEW WINDOW.
- 12- REMOVE EXISTING OVERHEAD DOOR IN PREPARATION FOR INSTALLATION OF NEW WINDOW WITHIN THE EXISTING OPENING.
- 13- REMOVE EXISTING DOOR AND FRAME IN PREPARATION FOR WALL INFILL.
- 14- REMOVE EXISTING INTERIOR WINDOW AND WALL BELOW IN PREPARATION FOR INSTALLATION OF NEW DOOR AND FRAME.
- 15- REMOVE EXISTING DOOR AND FRAME IN PREPARATION FOR INSTALLATION OF NEW WINDOW.
- 16- REMOVE EXISTING CEILING TILES AND SUSPENSION SYSTEM COMPLETE.
- 17- SAW CUT EXISTING CONCRETE SLAB FOR NEW FOUNDATION / ELEVATOR WORK. SEE STRUCTURAL.
- 18- REMOVE EXISTING CARPET DOWN TO SUBFLOOR IN PREPARATION FOR INSTALLATION OF NEW FLOOR COVERING.
- 19- REMOVE EXISTING VCT DOWN TO SUBFLOOR IN PREPARATION FOR INSTALLATION OF NEW FLOOR COVERING.
- 20- REMOVE EXISTING GUARD IN PREPARATION FOR FLOOR OPENING INFILL.
- 21- REMOVE EXISTING PLYWOOD DOORS / PANELS COMPLETE BACK TO MASONRY OPENING.
- 22- REMOVE EXISTING CHAIN-LINKED FENCE DOORS COMPLETE, BACK TO MASONRY OPENING.
- 23- REMOVE EXISTING SEWER PUMP AND ALL ASSOCIATED PIPING COMPLETE.
- 24- SAW CUT EXIST. CONCRETE SLAB AS SHOWN ON PLUMBING DRAWINGS FOR NEW WASTE WATER LINE.
- 25- REMOVE EXISTING OVERHEAD COILING DOOR AND ALL ASSOCIATED HARDWARE COMPLETE.
- 26- REMOVE EXISTING WATER HEATER AND ALL ASSOCIATED PLUMBING AND EQUIPMENT COMPLETE.
- 27- REMOVE EXISTING TELECOM. WIRING AND PLYWOOD PANEL COMPLETE.
- 28- REMOVE EXISTING WOOD SLIDING DOOR, TRACK AND ALL ASSOCIATED HARDWARE COMPLETE.
- 29- REMOVE EXISTING WINDOW COMPLETE AND REPLACE WITH NEW WITHIN EXISTING MASONRY OPENING
- 30- REMOVE PORTION OF EXIST. CONCRETE STEPS IN REPARATION FOR INSTALLATION OF NEW RAMP.
- 31- REMOVE EXISTING WOOD PORCH & STAIRS COMPLETE.
- 32- CAREFULLY REMOVE EXISTING ACCESS STEEL STAIR AND RAILINGS IN PREPARATION FOR REUSE IN THIS PROJECT.
- 33- REMOVE PORTION OF MEZZANINE COMPLETE.(WOOD STRUCTURE) AS SHOWN.
- 34- REMOVE EXISTING DOOR IN PREPARATION FOR INSTALLATION OF NEW DOOR. EXISTING FRAME TO REMAIN AND BE REPAINTED.
- 35- REMOVE EXISTING CARPET DOWN TO SUBFLOOR IN PREPARATION FOR INSTALLATION OF NEW FLOOR FINISH.
- 36- REMOVE EXISTING RESILIENT FLOORING DOWN TO SUBFLOOR IN PREPARATION FOR INSTALLATION OF NEW FLOOR FINISH.
- 37- REMOVE EXISTING CONCRETE RAMP COMPLETE DOWN TO SUBFLOOR.
- 38- REMOVE EXISTING RAMP DOWN TO LOWER ELEVATION COMPLETE.
- 39- REMOVE EXISTING DOOR & FRAME IN PREPARATION FOR NEW DOOR & FRAME.
- 40- REMOVE AND TERMINATE EXIST. ELECTRICAL PANEL. PLEASE VERIFY CONNECTIONS WITH OWNER BEFORE REMOVAL.
- 41- CAREFULLY REMOVE EXIST. ACOUSTICAL CEILING TILES, SUSPENSION SYSTEM AND ALL ASSOCIATED ELEMENTS. SET ASIDE TILES IN GOOD CONDITION FOR REUSE IN THIS PROJECT.
- 42- REMOVE SUSPENDED CEILING TILES AND SUSPENSION SYSTEM COMPLETE.
- 43- REMOVE PORTION OF EXISTING MASONRY (SAW CUT) TO GET BACK TO ORIGINAL 10-FOOT OPENING IN PREPARATION FOR INSTALLATION OF NEW WINDOW.
- 44- REMOVE EXISTING STEEL JOISTS AND WOOD DECK IN PREPARATION FOR INSTALLATION OF NEW PRECAST FLOOR AND WALL SYSTEM FOR NEW VAULT.
- 45- REMOVE PORTION OF CMU WALL AND PORTION OF ROOF IN PREPARATION FOR ROOF RECONFIGURATION OVER NEW STAIR FROM MEZZANINE TO SECOND FLOOR OF SOUTH WING.
- 46- SAW CUT PORTION OF EXISTING CONCRETE SLAB IN REPARATION FOR INSTALLATION OF NEW SANITARY LINE AND ELECTRICAL CONDUIT. SEE ELECTRICAL & PLUMBING DRAWINGS



SECOND FLOOR REMOVALS PLAN - SOUTH SECTION

1/8" = 1'-0"

NORTH

