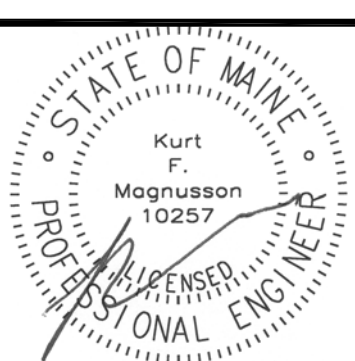
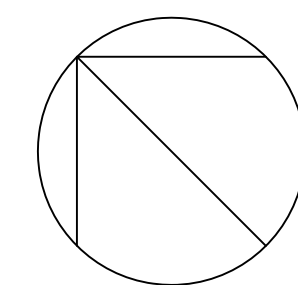




Winton Scott Architects  
5 Milk Street  
Portland, Maine 04101  
207 774 4811  
www.wintonscott.com

Architecture / Planning  
Preservation Architecture  
Interior Architecture

NORTH



City of Portland  
Public Facilities  
Operation  
Center

212 Conco Rd  
Portland, Maine

REVISIONS

ISSUED FOR CONSTRUCTION  
August 25, 2014

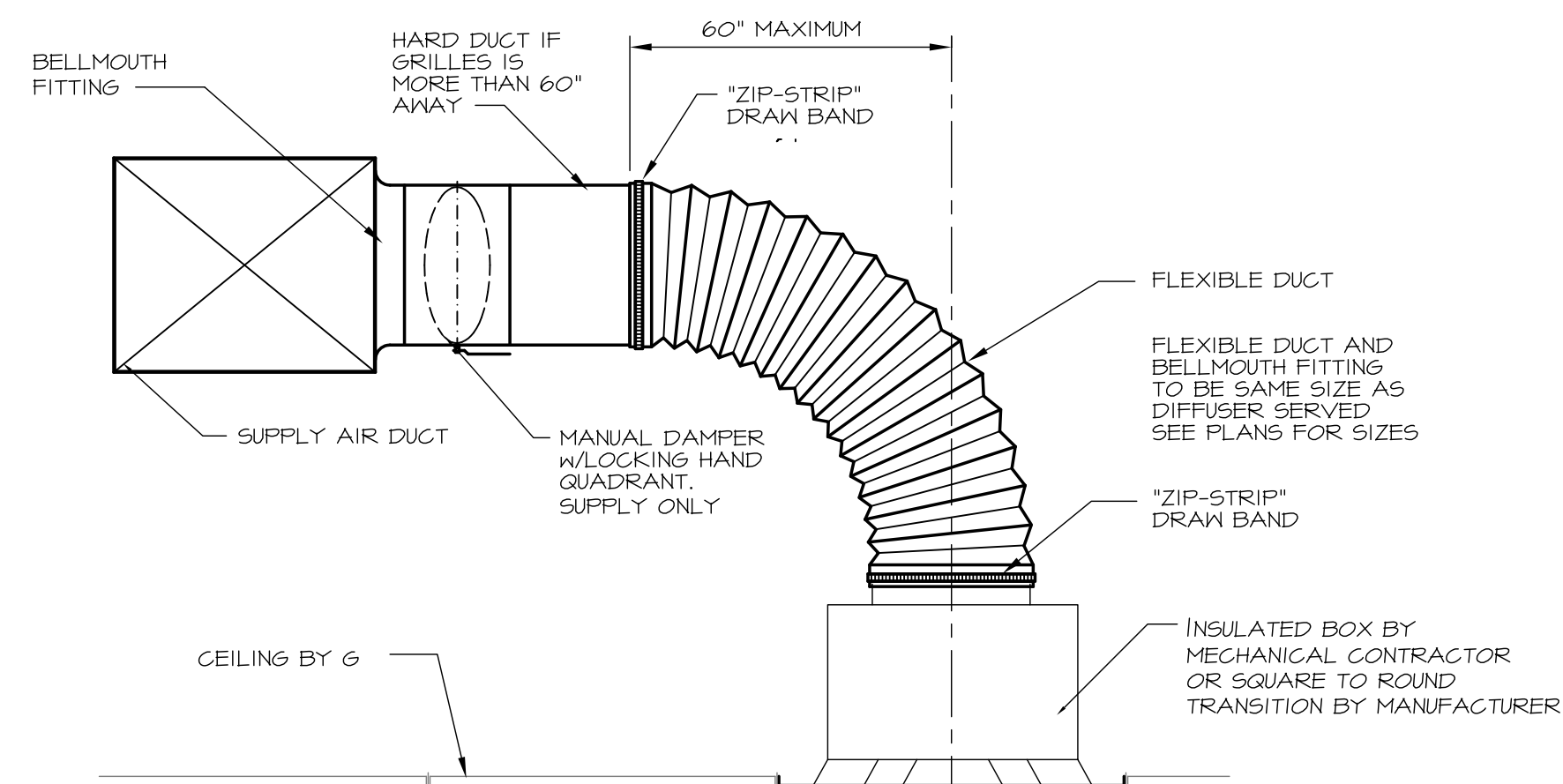
Core Area Ductwork  
Mechanical Details  
Mechanical Sections

Scale: 3/16" = 1'-0"

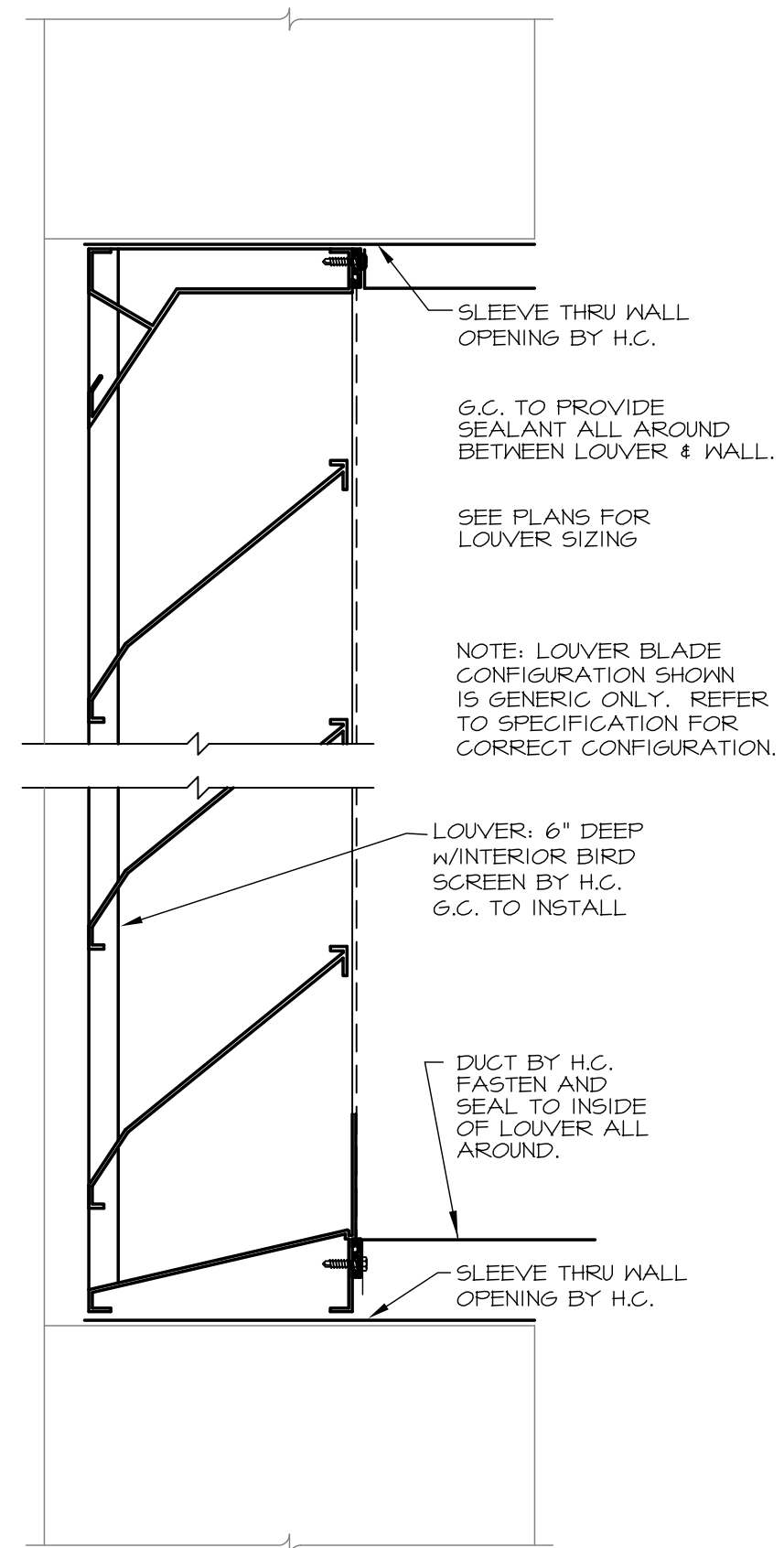
**MECHANICAL SYSTEMS ENGINEERS**  
ROYAL RIVER CENTER, UNIT #10B  
10 FOREST FALLS DRIVE  
YARMOUTH, MAINE 04096  
FACEBOOK: MECHANICAL SYSTEMS ENGINEERS  
207-846-1441  
M.S.E. Proj. 1424  
© COPYRIGHT 2014



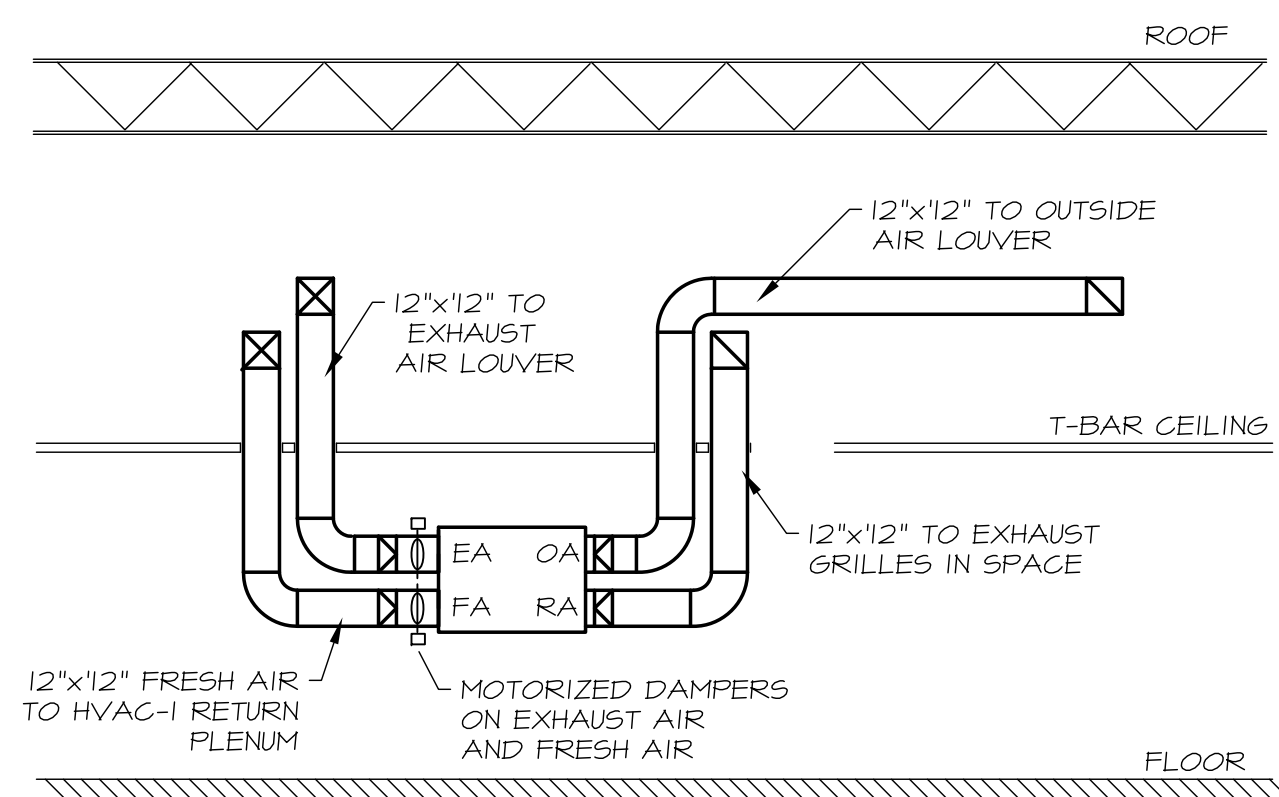
M2



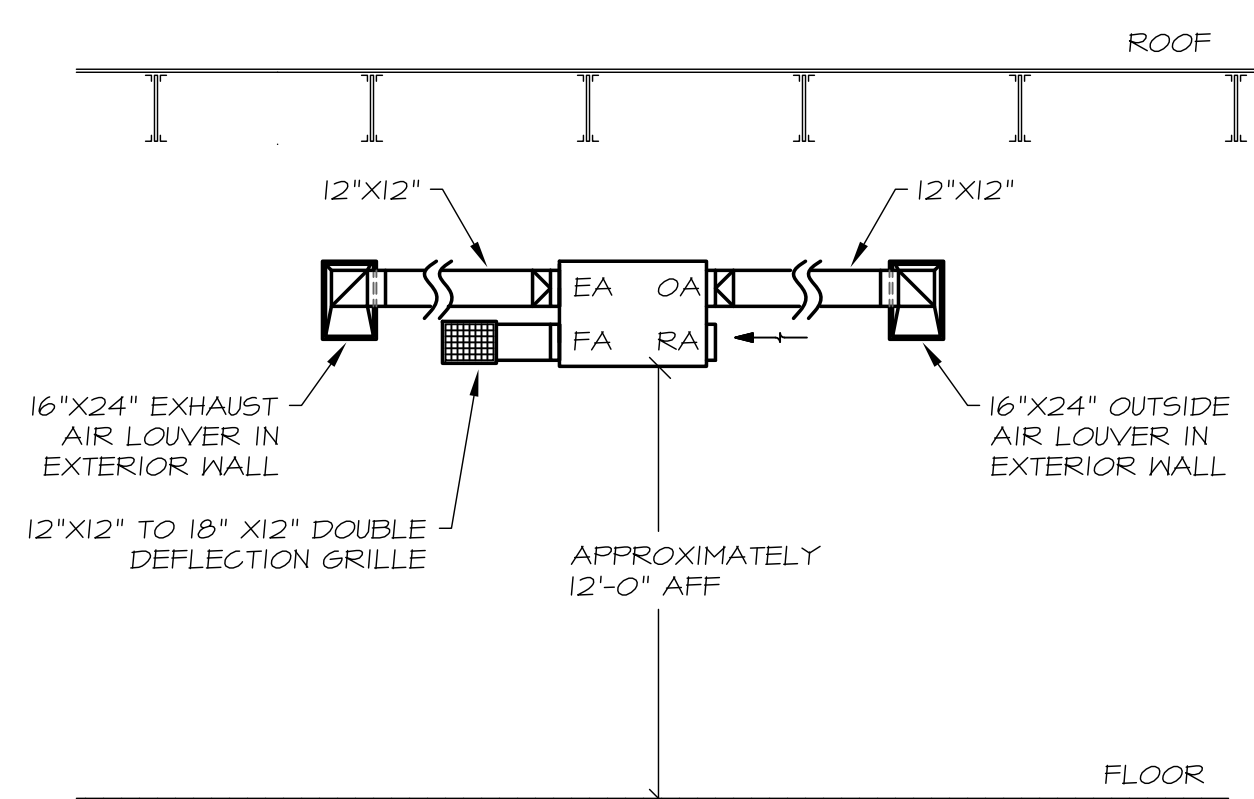
**5 FLEXIBLE DUCT & GRILLE CONNECTION DETAIL**  
NO SCALE



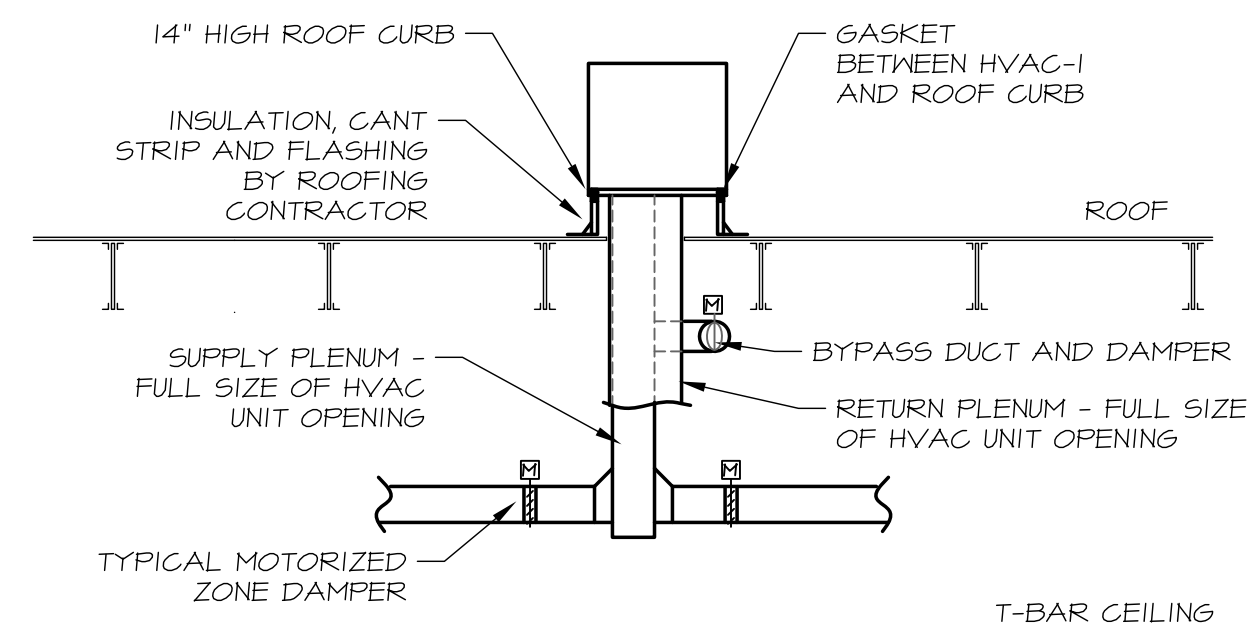
**6 EXTERIOR LOUVER DETAIL**  
NO SCALE



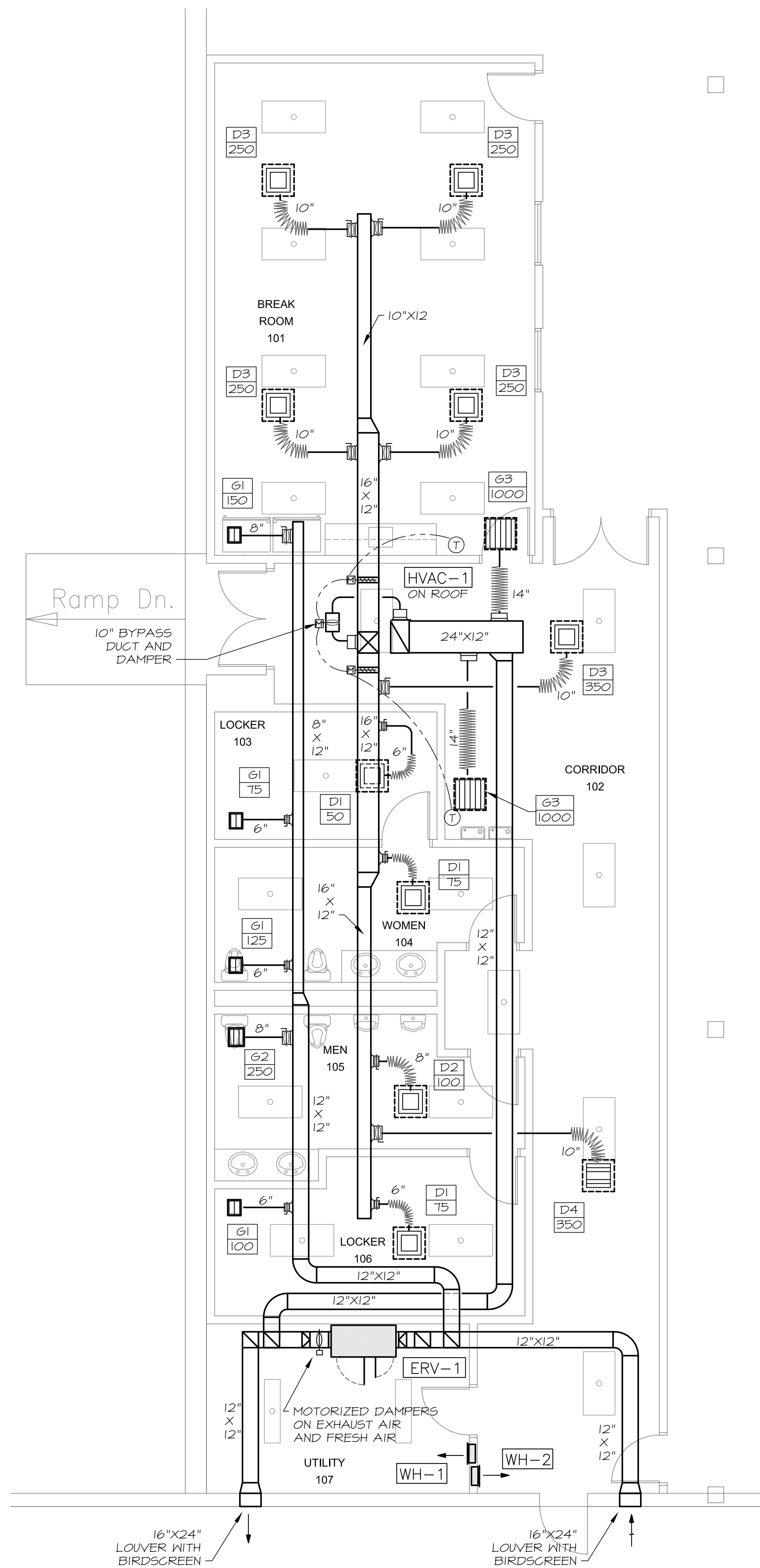
**2 SECTION THROUGH ERV-1**  
SCALE: 3/16" = 1'-0"



**3 SECTION THROUGH ERV-2,3&4**  
SCALE: 3/16" = 1'-0"



**4 SECTION THROUGH HVAC-1**  
SCALE: 3/16" = 1'-0"



**1 CORE AREA DUCTWORK PLAN**  
SCALE: 3/16" = 1'-0"

