



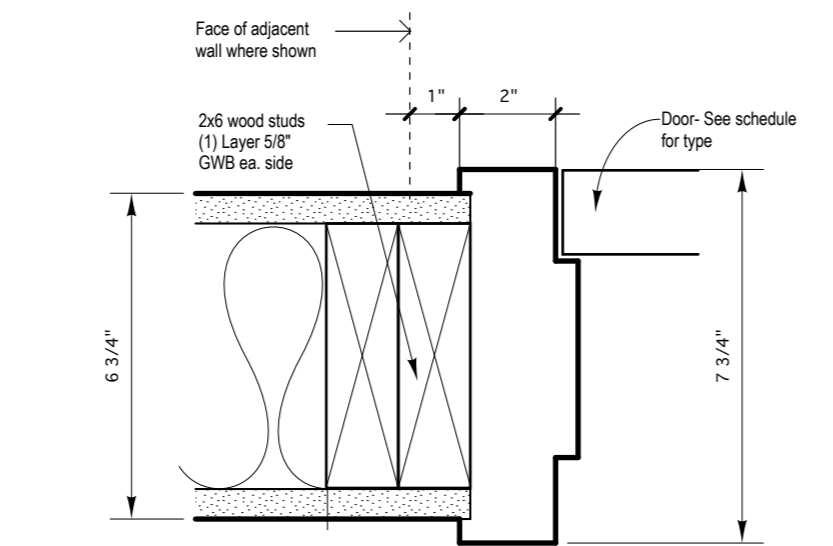
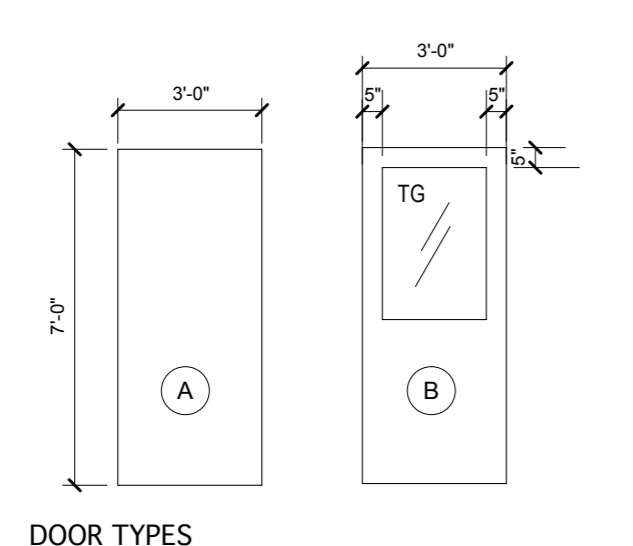
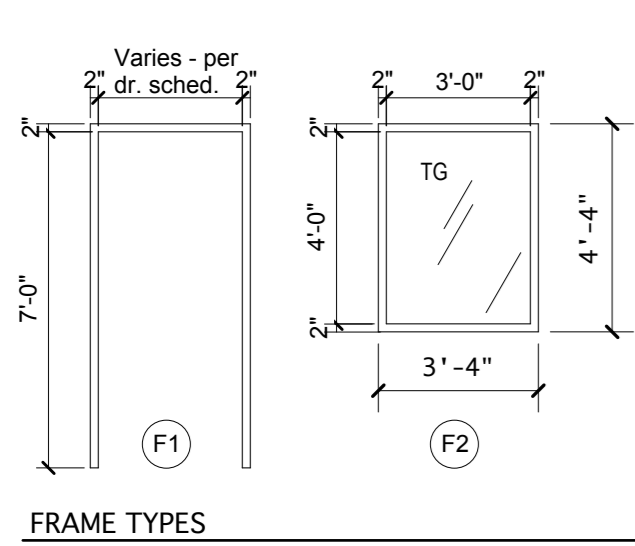
DOOR & FRAME SCHEDULE

General		Door		Frame		Details		Hardware		Label		Remarks		
Door No.	Size (W x H)	Thickness	Material	Finish	Type	Material	Finish	Type	Head	Jamb	Threshold	Hardware	Label	Remarks
101.1	3'-0" X 7'-0"	1 3/4"	HM	PNTD	B	HM	PNTD	F1	H1	J1	TYPE 1	HDWR 1	--	THRESHOLD-4" ALUMINUM ADA
101.2	3'-0" X 7'-0"	1 3/4"	HM	PNTD	B	HM	PNTD	F1	H1	J1	--	HDWR 1	--	--
101.3	3'-0" X 4'-0"	--	--	--	--	HM	PNTD	F2	H1 Sim	J1 Sim	--	--	--	*FIXED GLASS PANEL
101.4	3'-0" X 4'-0"	--	--	--	--	HM	PNTD	F2	H1 Sim	J1 Sim	--	--	--	*FIXED GLASS PANEL
102.1	PR 3'-0" X 7'-0"	1 3/4"	HM	PNTD	B	HM	PNTD	F1	H1	J1	--	HDWR 4	--	--
102.2	PR 3'-0" X 7'-0"	1 3/4"	HM	PNTD	B	HM	PNTD	F1	H1	J1	TYPE 1	HDWR 4	--	THRESHOLD-4" ALUMINUM ADA
102.3	3'-0" X 7'-0"	1 3/4"	HM	PNTD	B	HM	PNTD	F1	H1	J1	TYPE 1	HDWR 3	--	THRESHOLD-4" ALUMINUM ADA
102.4	3'-0" X 7'-0"	EXISTG	EXISTG	EXISTG	EXISTG	EXISTG	EXISTG	EXISTG	EXISTG	EXISTG	EXISTG	EXISTG	EXISTG	*EXISTING DOOR
103	3'-0" X 7'-0"	1 3/4"	HM	PNTD	A	HM	PNTD	F1	H1	J1	--	HDWR 5	--	--
104	3'-0" X 7'-0"	1 3/4"	HM	PNTD	A	HM	PNTD	F1	H1	J1	--	HDWR 5	--	--
105	3'-0" X 7'-0"	1 3/4"	HM	PNTD	A	HM	PNTD	F1	H1	J1	--	HDWR 5	--	--
106	3'-0" X 7'-0"	1 3/4"	HM	PNTD	A	HM	PNTD	F1	H1	J1	--	HDWR 5	--	--
107	3'-0" X 7'-0"	1 3/4"	HM	PNTD	A	HM	PNTD	F1	H1	J1	--	HDWR 2	--	--

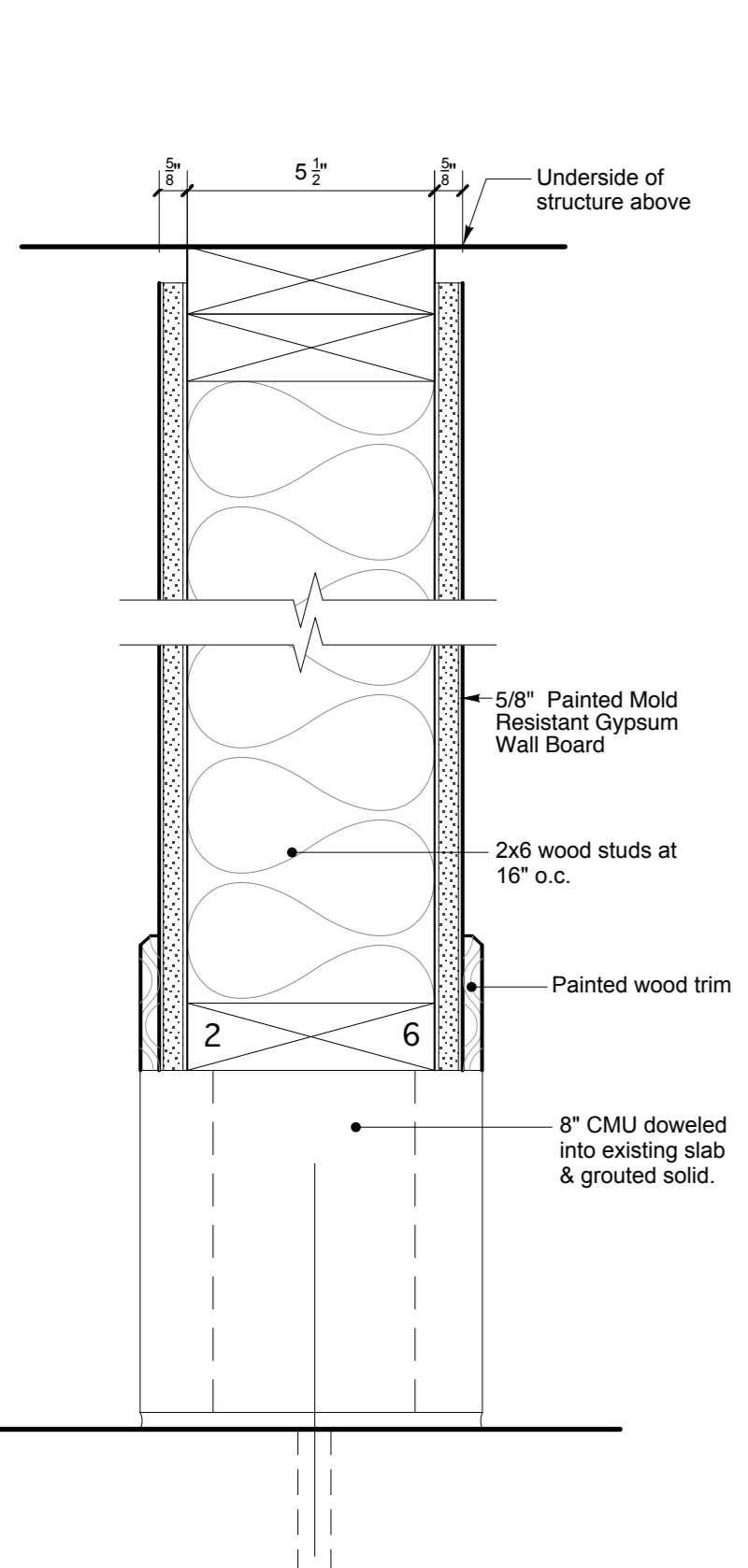
Hardware Sets:
 HDWR 1: Hinges, Closer, Silencers, Stop, Commercial heavy duty lockset w/ ADA lever handle- Office Function, Weatherstripping. Threshold at door 101.1 only.
 HDWR 2: Hinges, Silencers, Stop, Commercial Duty Lever Lockset w/ ADA lever handle - Supply Rm. Function.
 HDWR 3: Hinges, Closer, Exit Device, Pull, Silencers, Stop, Commercial heavy duty lockset w/ ADA lever handle- Entry Function, Weatherstripping & Threshold.
 HDWR 4: Hinges, Closers, Exit Devices, Coordinator, Astragal, Pulls, Silencers, Stops, Commercial heavy duty lockset w/ ADA lever handle- Entry Function, Weatherstripping. Threshold at door 102.2 only.
 HDWR 5: Hinges, Closer, Silencers, Pull, Push Plate, Stop

ABBREVIATIONS

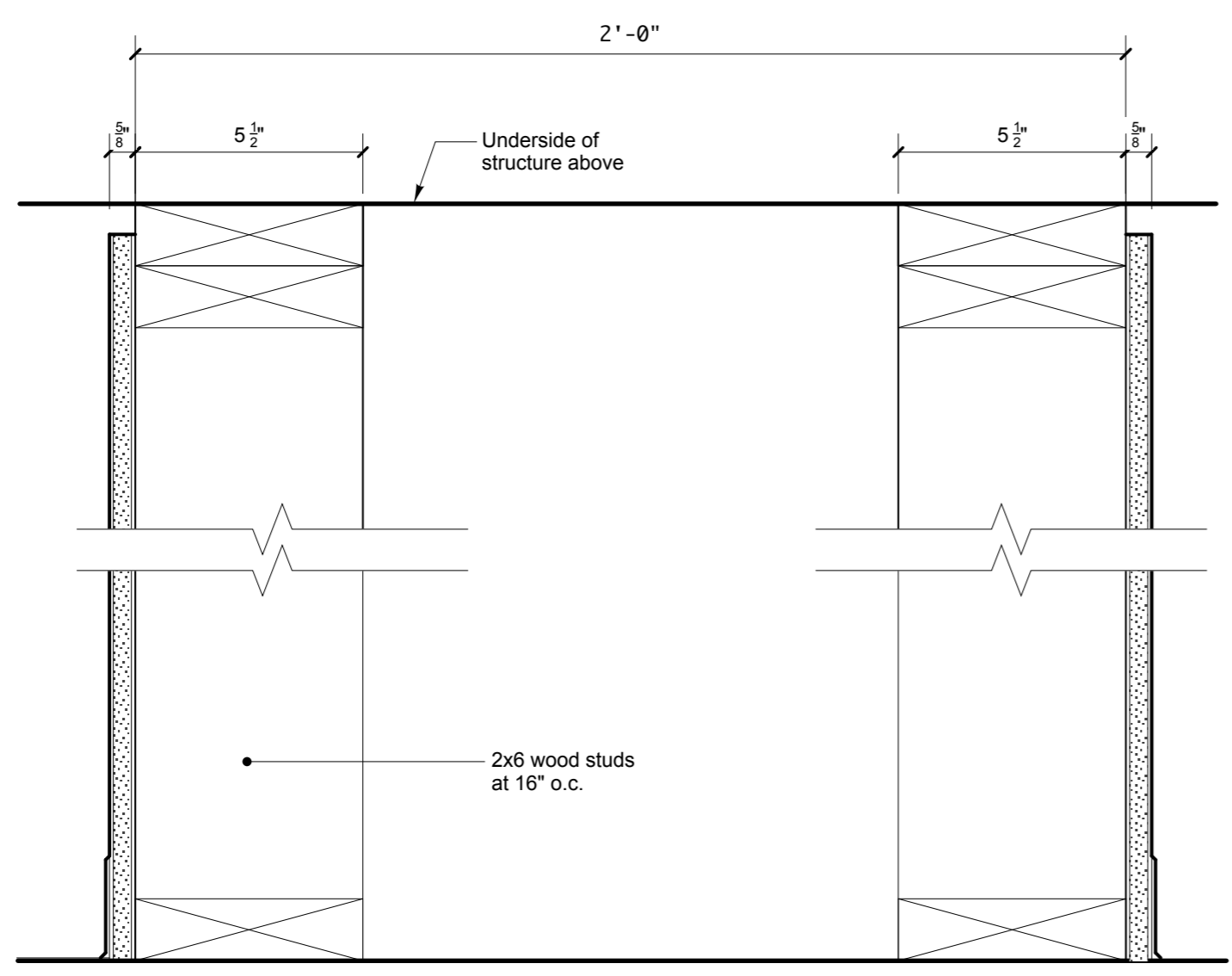
ALUM	Aluminum
SCND	Solid Core Wood Door
CLR. F.	Clear Finish
HM	Hollow Metal
CHM	Galvanized Hollow Mt.
PNTD.	Painted
F.F.	Factory Finish
HW	Hardware Set
TG	Tempered Glass



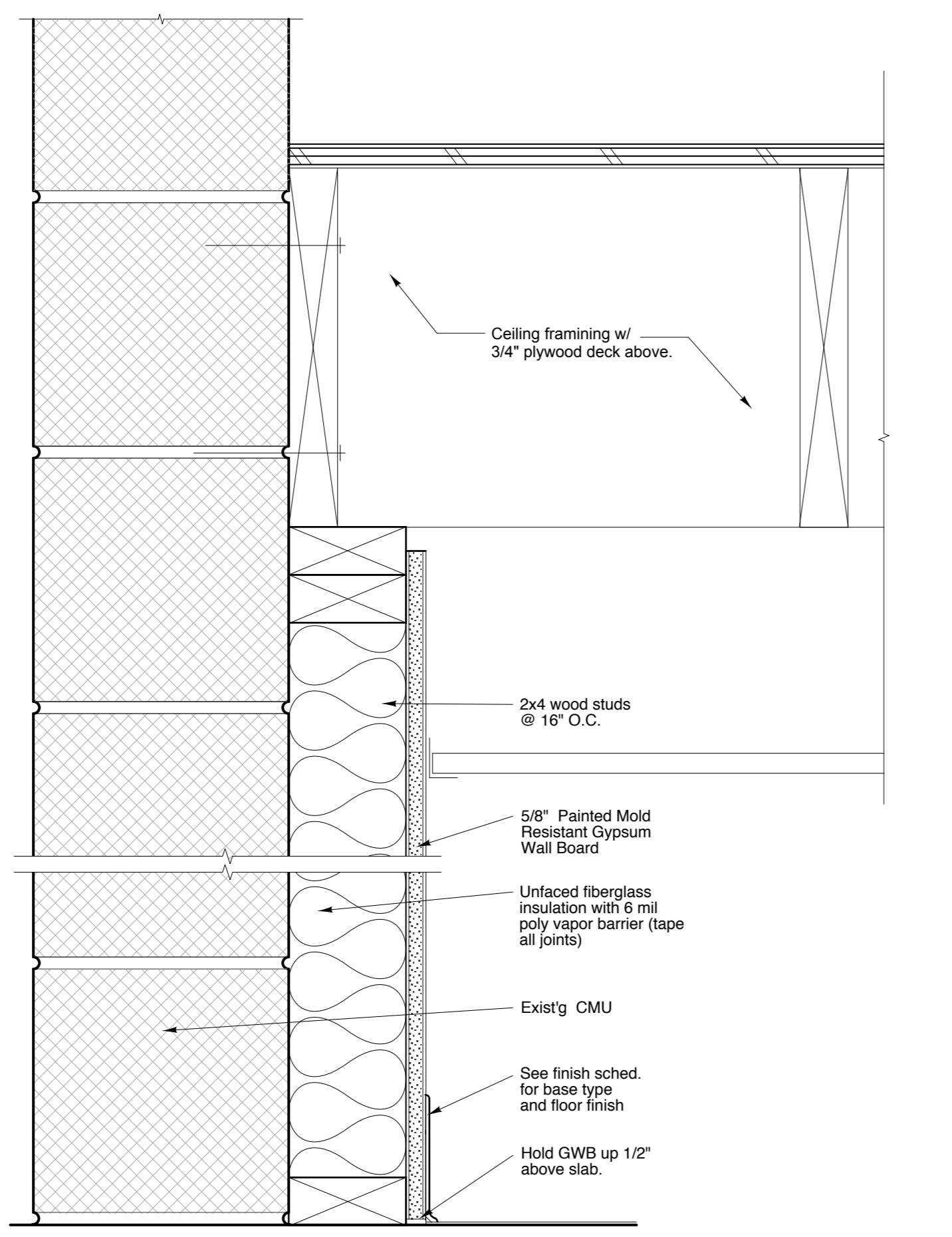
H1 J1 JAMB DETAIL. (Head Similar)



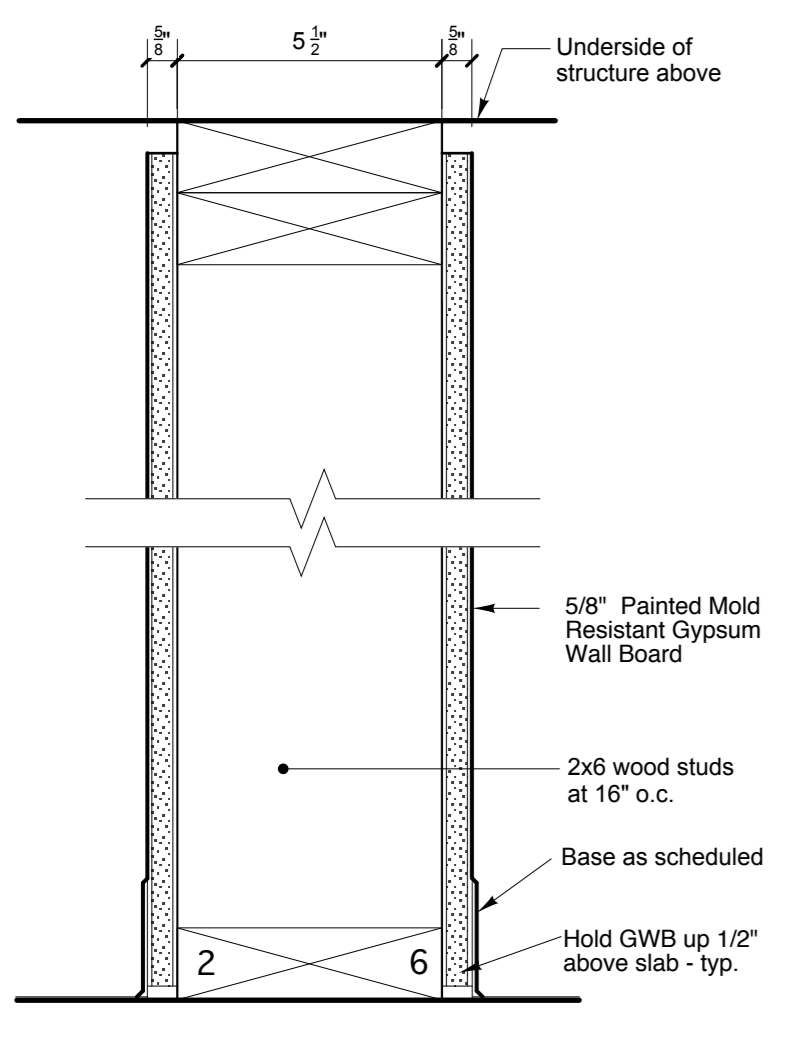
1 Typical Interior Partition - 2x6 Wood Studs As Shown



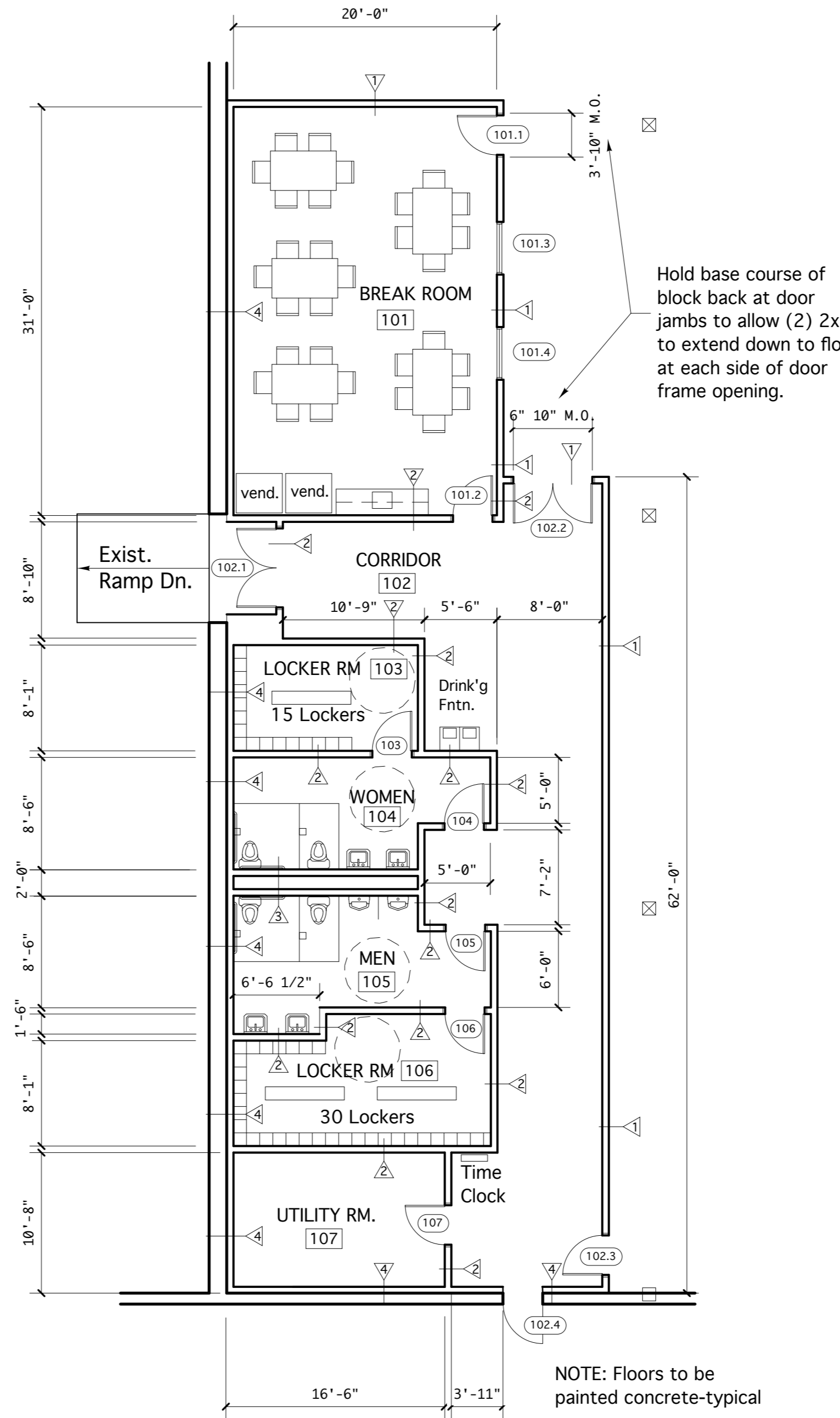
2 2x6 Wood Stud Chase Wall at Bathrooms As Shown



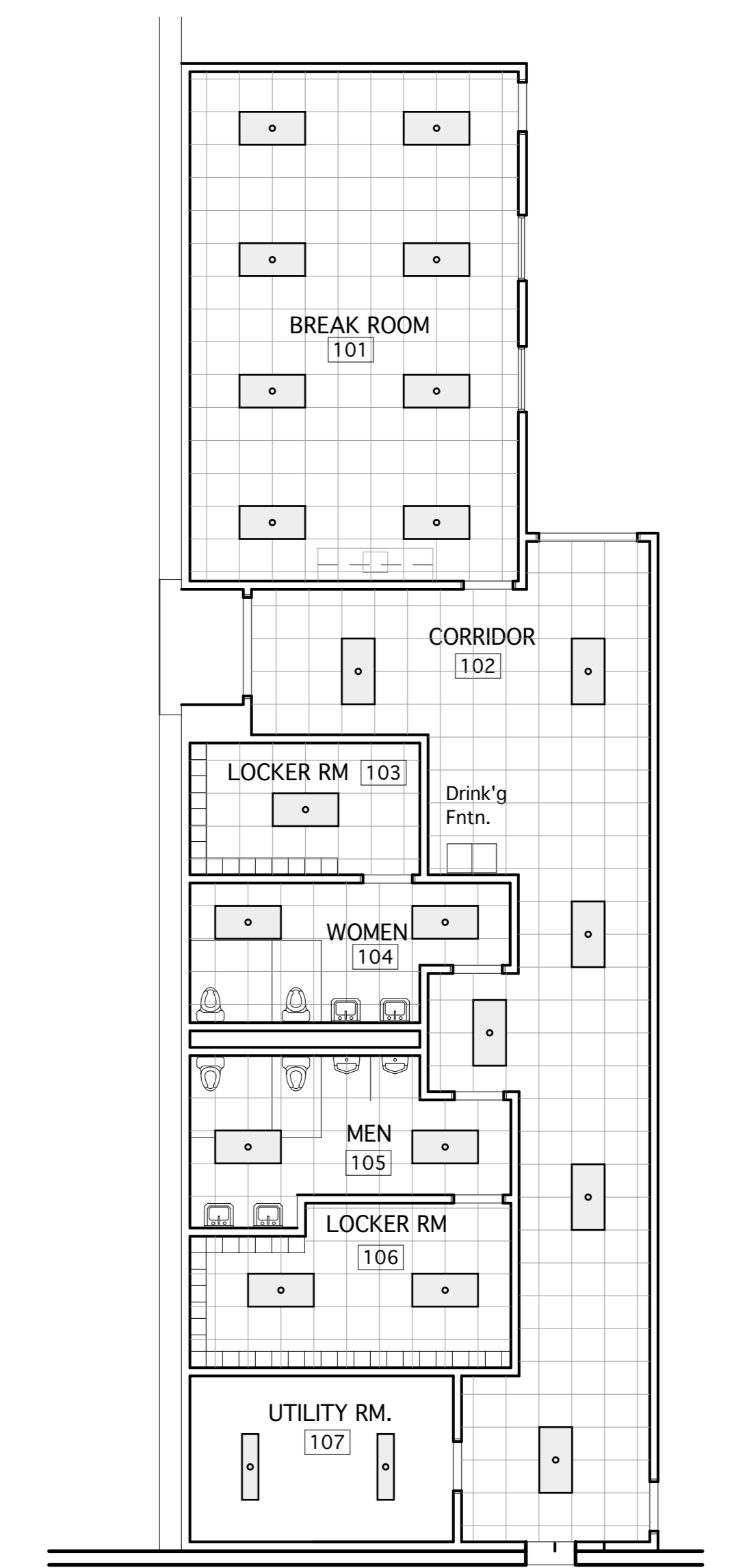
3 Existing CMU Partition w/ GWB Finish As Shown



4 Typical Interior Partition - 2x6 wood studs As Shown



FIRST FLOOR LAYOUT PLAN
1/8" = 1'-0"



FIRST FLOOR CEILING PLAN
1/8" = 1'-0"

- CEILING PLAN NOTES:**
- 2x4 Light Fixtures to be Lithonia GT8 General Purpose T8 Troffer Catalog # 2GT8232A12MVOLTADO PL.
 - 4' Utility Strip Fluorescents to be Lithonia C General Purpose Strip Catalog # TC232MVOLTADOPL.
 - Set all ceiling grids at +/- 8'-0". Ceiling ACT Tile to be: 2x2 Cortega Square Lay-in by Armstrong ACT Grid to be: 15/16" Armstrong Prelude.
 - See Electrical Plans for Life Safety Equip locations including fire alarm, emergency lighting and exit signs.

City of Portland
Public Facilities
Operation
Center

212 Canco Road
Portland, Maine

REVISIONS

PERMIT DRAWINGS
August 18, 2014

Enlarged Plan/ Ceiling
Plan/ Partition Types/
Door Schedule & Dtls.

Scale: As Noted