

City of Portland  
Public Facilities  
Operation  
Center

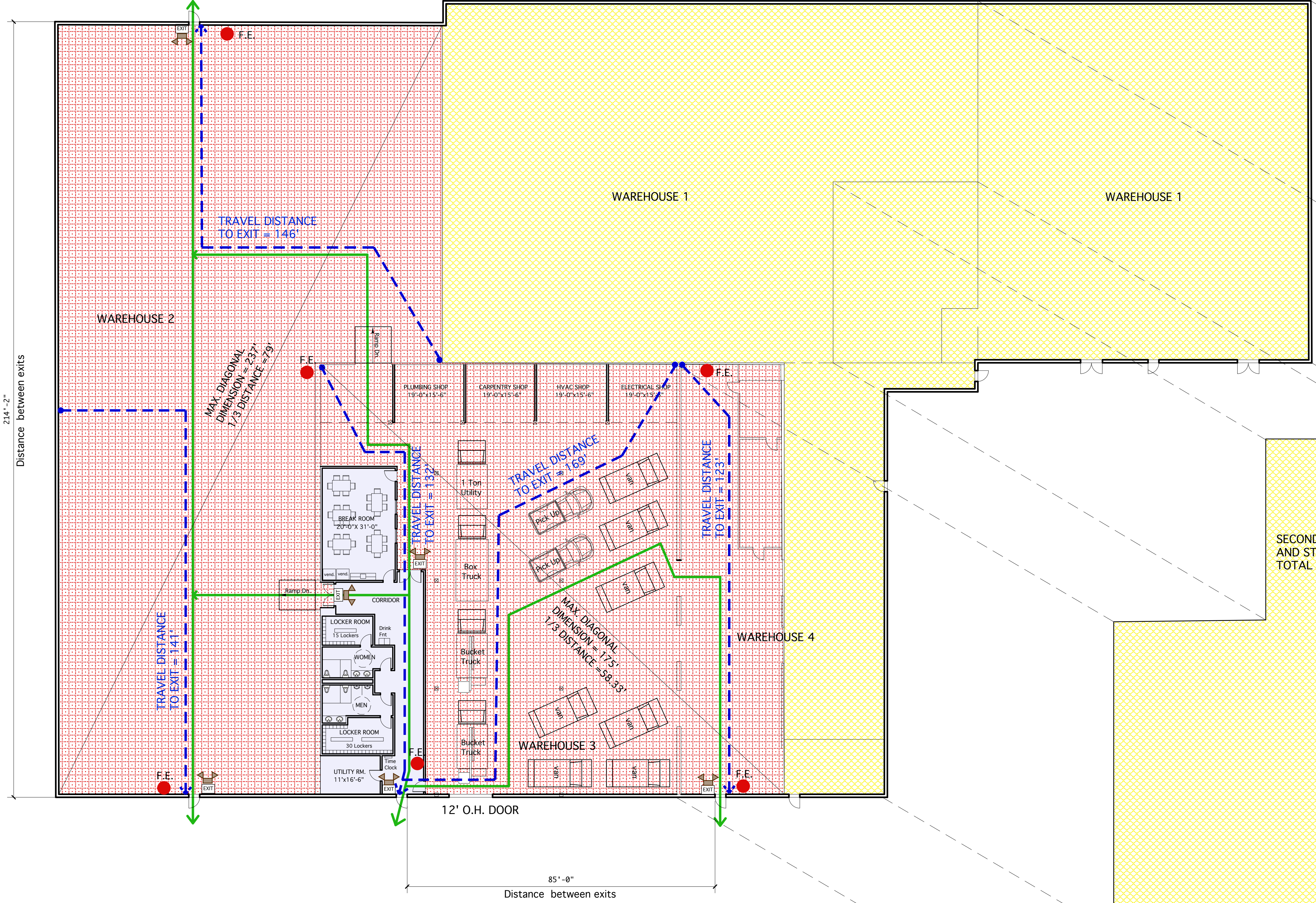
212 Canco Road  
Portland, Maine

REVISIONS

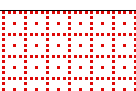
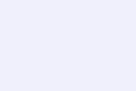
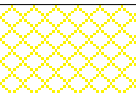
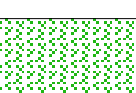




PERMIT DRAWINGS  
August 18, 2014

Life Safety Plan

Scale: As Noted



LEGEND

-  AREA CURRENTLY OCCUPIED BY CITY OF PORTLAND (POLICE AND FIRE DEPTS & BUILDING TRADES). 31,315 S.F.
-  AREA OF NEW INTERIOR FIT UP CONSTRUCTION 2,376 S.F.
-  AREAS OCCUPIED BY OTHER TENANTS. NO RENOVATION WORK PLANNED
-  EXIST'G OFFICE AREA OCCUPIED BY CITY OF PORTLAND NO RENOVATION WORK PLANNED.
-  EXIT SIGN/COMB EMERGENCY LIGHT
-  FIRE EXTINGUISHER LOCATION (REQUIRED EVERY 75')
-  TRAVEL DISTANCE TO EXIT DISCHARGE
-  PRIMARY EXIT PATH

FIRST FLOOR LAYOUT PLAN  
1/16" = 1'-0"

TOTAL BUILDING AREA FIRST FLOOR = 61,820 S.F.  
TOTAL BUILDING AREA SECOND FLOOR = 18,231 S.F.  
BUILDING TOTAL: 80,051 S.F.

214'-2"  
Distance between exits

12' O.H. DOOR  
85'-0"  
Distance between exits

SECOND FLOOR OFFICE AND STORAGE AREA TOTAL 18,231 s.f.

TRAVEL DISTANCE TO EXIT = 146'

MAX. DIAGONAL DIMENSION = 237'  
1/3 DISTANCE = 79'

TRAVEL DISTANCE TO EXIT = 132'

TRAVEL DISTANCE TO EXIT = 169'

TRAVEL DISTANCE TO EXIT = 123'

MAX. DIAGONAL DIMENSION = 173'  
1/3 DISTANCE = 58.25'

TRAVEL DISTANCE TO EXIT = 141'