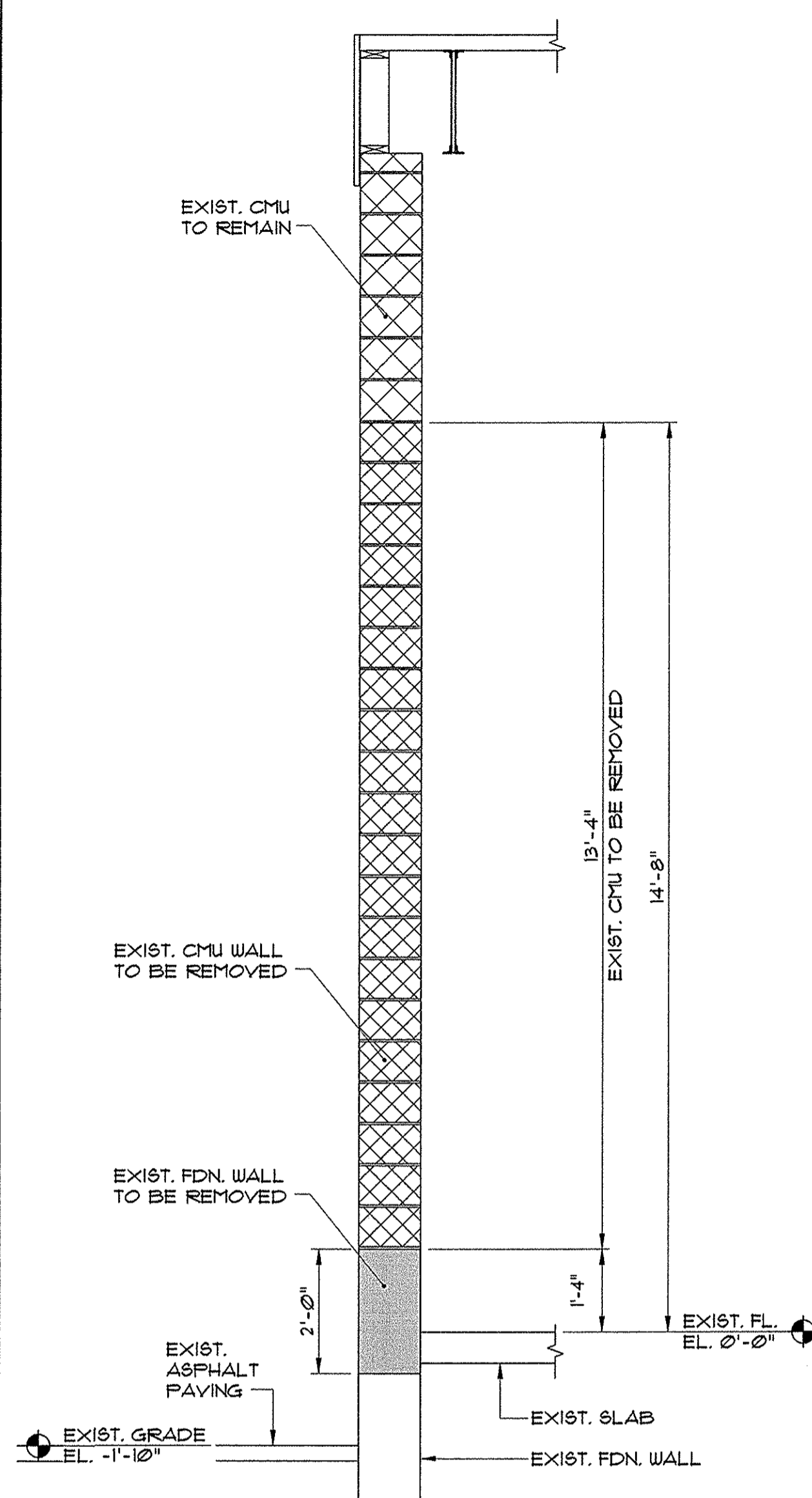
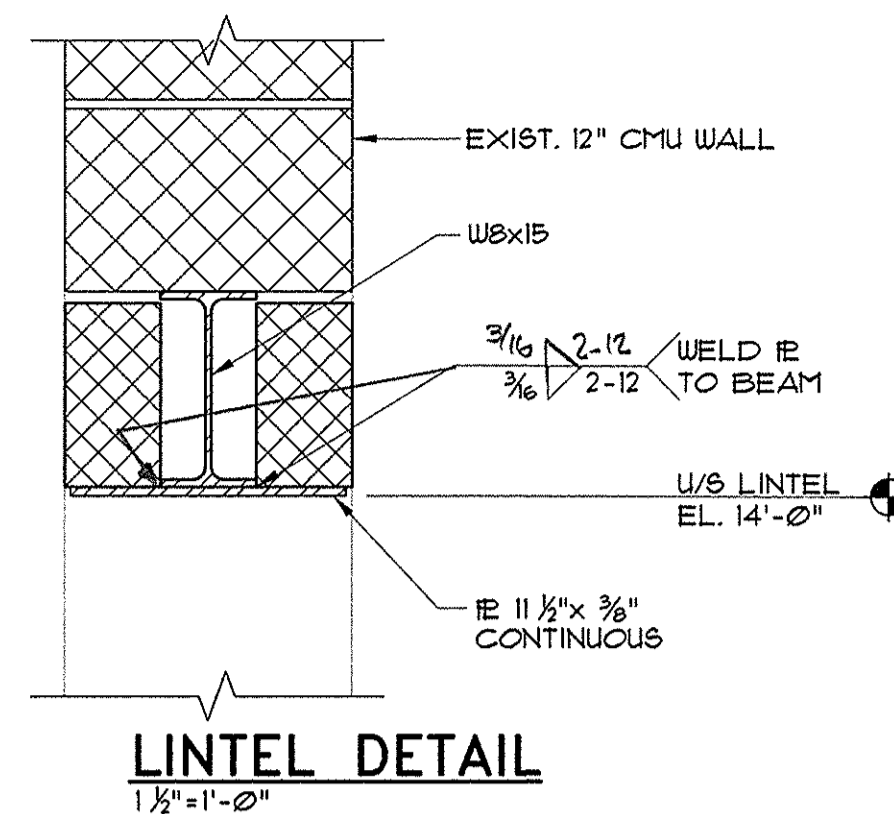


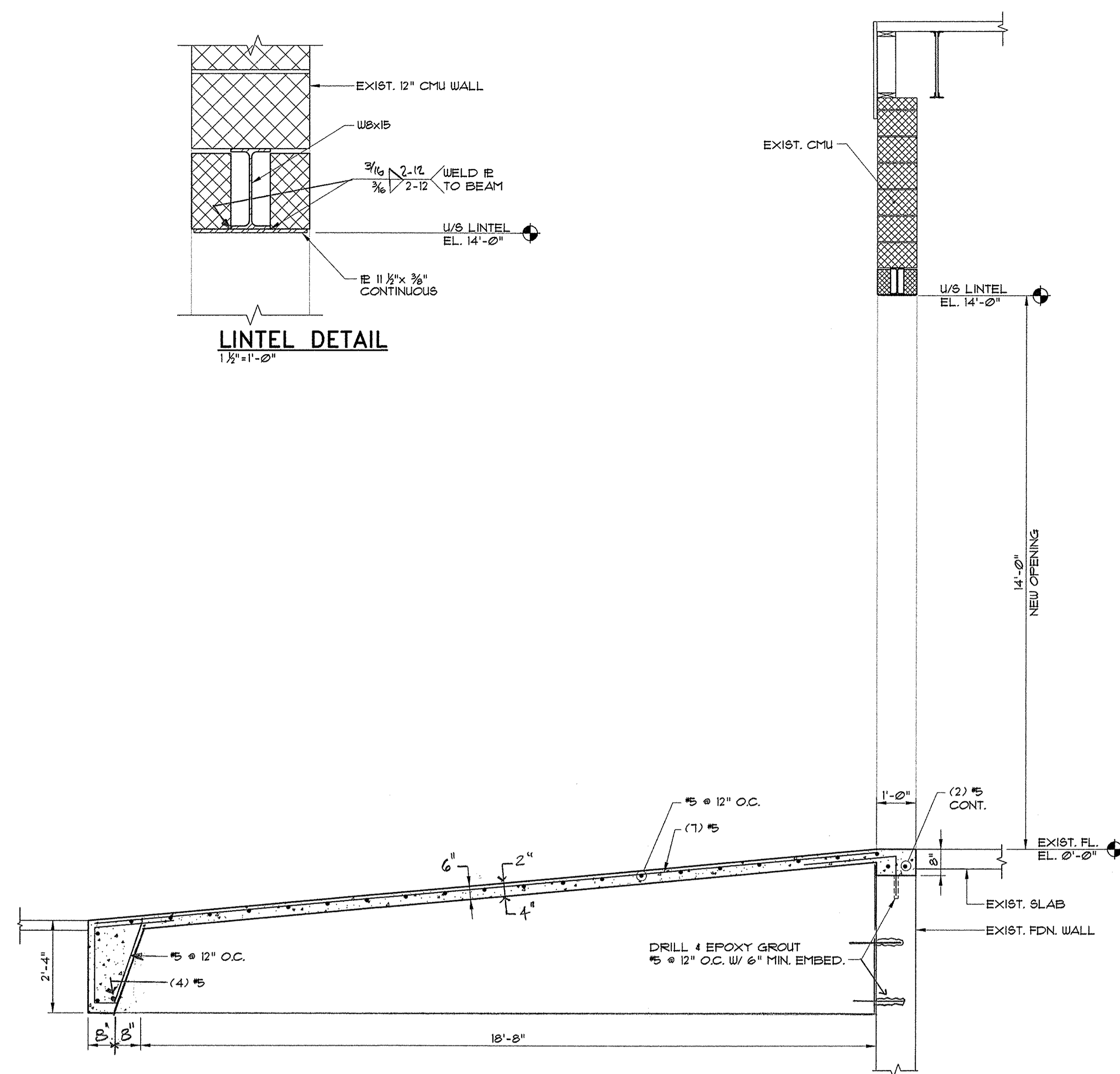
SITE PLAN
1"=40'



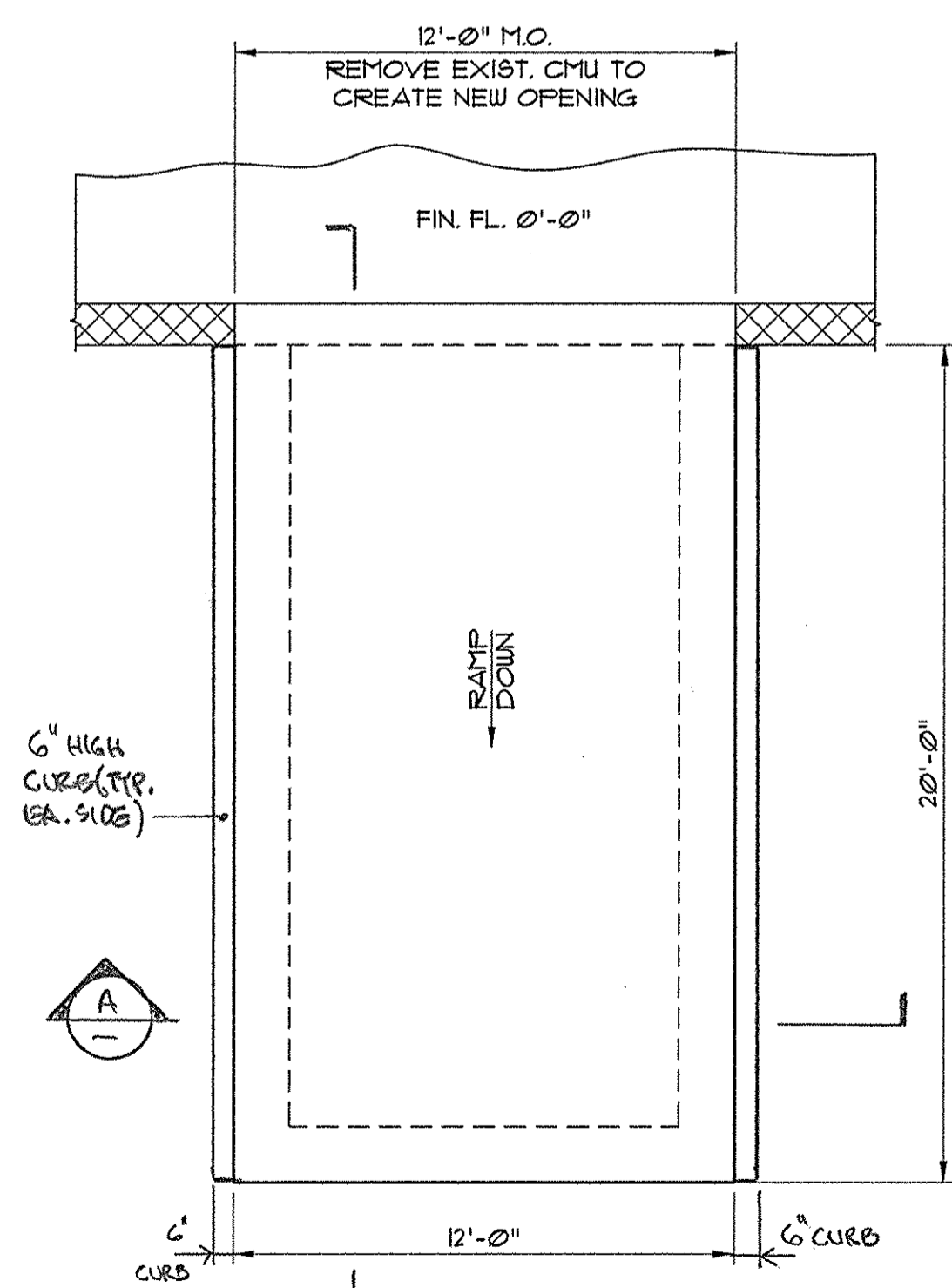
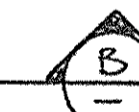
DEMOLITION SECTION
1/2"=1'-0"



LINTEL DETAIL
1 1/2"=1'-0"

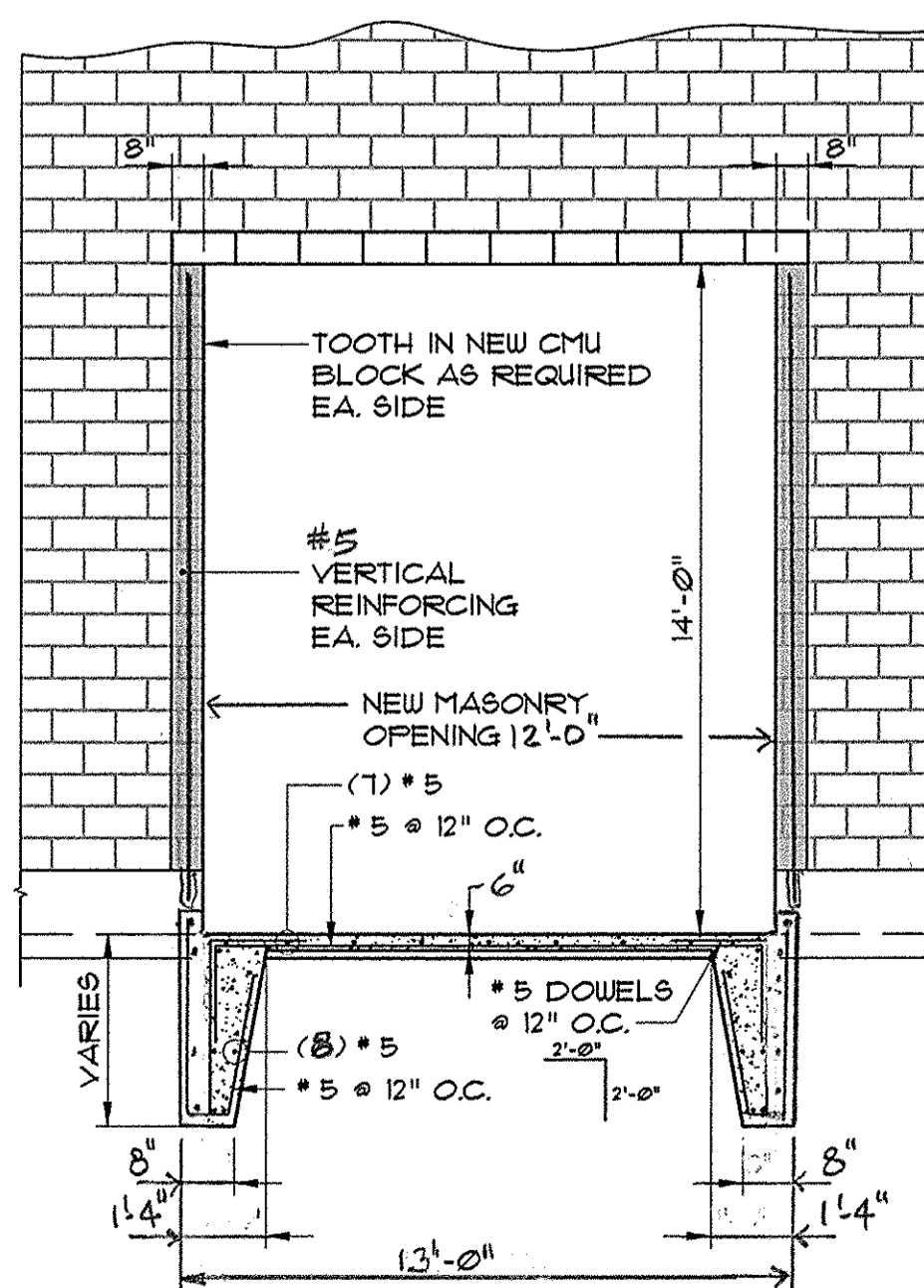


MODIFICATION SECTION
1/2"=1'-0"

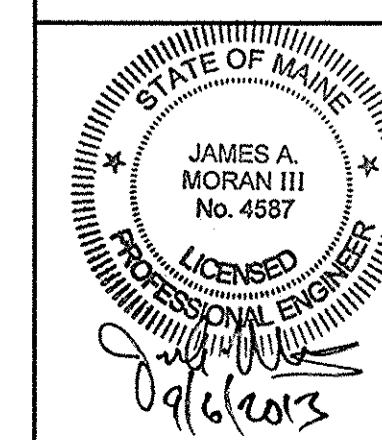


PLAN
1/2"=1'-0"

NOTE: REMOVE AND REPLACE BITUMINOUS PAVEMENT AS NECESSARY TO INSTALL NEW RAMP CONCRETE.



ELEVATION
1/4"=1'-0"



REV.	DATE	DESCRIPTION
NELSON & SMALL, INC. 212 CANCO ROAD OVERHEAD DOOR/RAMP PROJECT PINKHAM & GREER CONSULTING ENGINEERS 28 VANNAH AVENUE PORTLAND, MAINE SITE PLAN, RAMP PLAN SECTIONS & ELEVATIONS		
SCALE:	AS SHOWN	DRN BY: MJB
DATE:	SEPTEMBER 3, 2013	DESIGN BY: JAM III
PROJECT:	13351	CHK BY: JAM III

S1.1