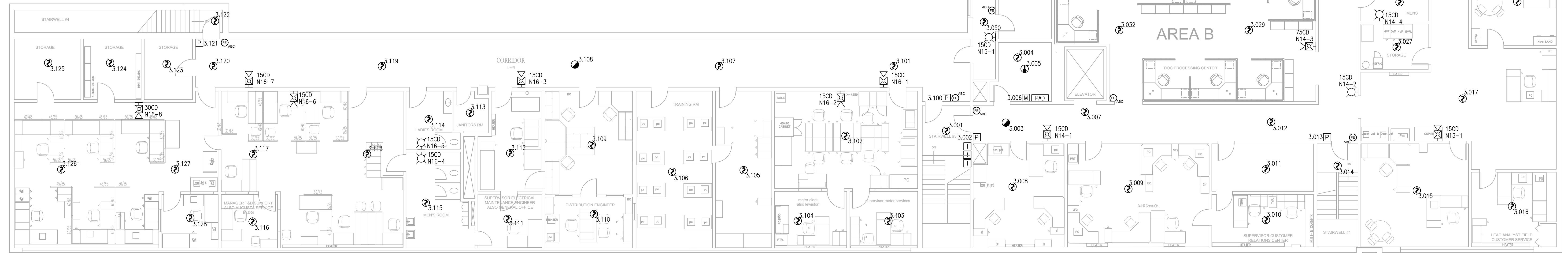


FIRE ALARM SYSTEM LAYOUT - 1ST FLOOR
SCALE: 1/8" = 1'

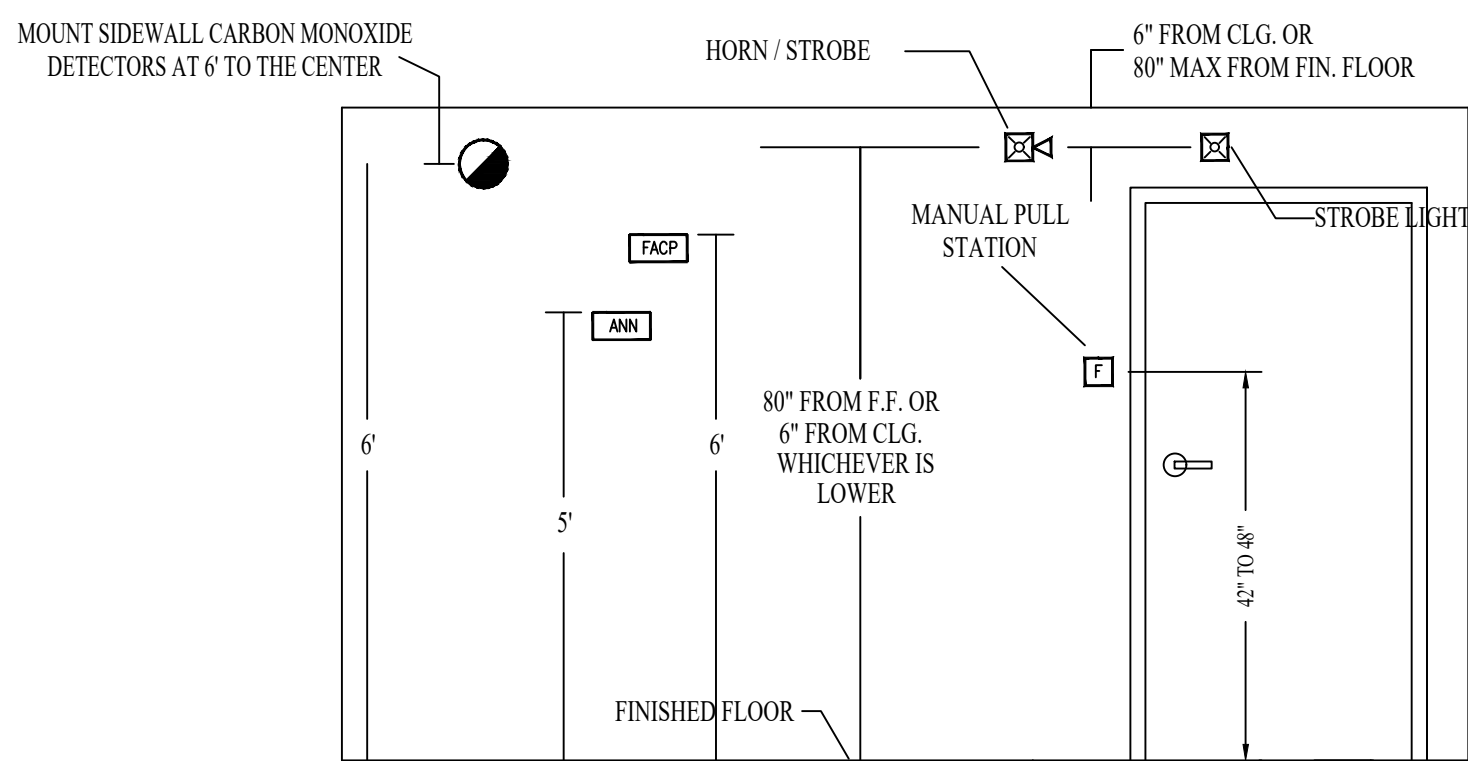


FIRE ALARM SYSTEM LAYOUT - 2ND FLOOR
SCALE: 1/8" = 1'

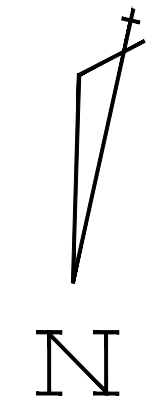
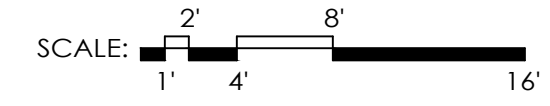
SYMBOL LEGEND			
ITEM NO.	SYMBOL	QTY. TOTAL	DESCRIPTION
1	○	235	STANDARD BASE (SIGA-SB)
2	●	10	SMOKE-CO COMBINATION DETECTOR (SIGA-PCD)
3	⬇	39	HEAT DETECTOR (SIGA-HRD)
4	⌈	10	LINE ISOLATOR (SIGA-IM)
5	EM	3	DUAL MONITOR MODULE (SIGA-C12)
6	M	4	MONITOR MODULE (SIGA-C11)
7	P	16	PULL STATION (SIGA-278)
8	EM	4	INPUT/OUTPUT MODULE (SIGA-CRH)
9	⊕	186	SMOKE-HEAT COMBINATION SYSTEM (SIGA-PHD)
10	SDS	7	DUCT DETECTOR (SIGA-SD)
11	EM	6	TEST SWITCH (SD-TRK)
12	HS-XX	41	HORN/STROBE (G1RF-HDVM)
13	HS-XX	24	HORN/STROBE (GCFR-HDVM)
14	HS-XX	28	STROBE (G1RF-WM)
15	HS-XX	6	STROBE (GCFR-WM)
16	ANN	1	ANNUNCIATOR (RLCD-CR)
17	FACP	1	FIRE ALARM CONTROL PANEL (01000R)
18	PAD	3	PAD PANEL (EBPS10A)

- GENERAL NOTES
- INSTALLATION PRACTICES SHALL COMPLY WITH NFPA 72, THE NATIONAL ELECTRIC CODE & CENTRAL MAINE POWER FIRE ALARM SPECIFICATION
 - ALL EXPOSED WIRING SHALL BE IN EMT PAINTED RED. CONCEALED WIRING ABOVE SUSPENDED CEILINGS SHALL BE FIRE ALARM MC. ALL FITTINGS AND JUNCTION COVERS SHALL BE PAINTED RED.
 - WIRES SHALL BE CHECKED FOR FAULT CONDITIONS (OPEN, SHORT, GROUND FAULT) BEFORE CONNECTING TO FIRE ALARM CONTROL EQUIPMENT. CONNECTIONS TO FIRE ALARM CONTROL EQUIPMENT SHALL BE HANDLED BY EASTERN FIRE.
 - WHERE USING SHIELDED CABLE DRAIN SHALL BE CONNECTED AS ONE CONTINUOUS PATHWAY PROTECTED WITHIN DEVICE SPLICES WITH ELECTRICAL TAPE OR AN APPROVED ALTERNATE METHOD AND ONLY CONNECTED THROUGH FINAL TERMINATIONS AT ORIGINATING CONTROL EQUIPMENT SUCH AS FACP OR REMOTE POWER EXTENDER.
 - ALL WIRING IS TO BE NEW. KEEP EXISTING FIRE ALARM SYSTEM OPERATIONAL UNTIL NEW SYSTEM IS COMPLETE AND FUNCTIONALLY TESTED.
 - EN GAUGE FIRE EXTINGUISHER MONITORING DEVICES MEASURE FOR OBSTRUCTIONS IN FRONT OF EXTINGUISHER. LOCATE HARDWARE AND SENSOR IN AREAS FREE OF OBSTRUCTIONS. CONSULT EASTERN FIRE IF LOCATIONS REFLECTED ON FLOOR PLANS PRESENT FORESEEABLE OBSTRUCTIONS.
 - HEAT DETECTORS IN AREAS EXPOSED TO THE ENVIRONMENT SHALL BE PROGRAMMED FOR FIXED TEMP 155° F ONLY. DETECTORS LOCATED IN CONTROLLED TEMPERATURE AREAS SHALL BE PROGRAMMED FOR RATE OF RISE DETECTION

- KEYED NOTES
- LOCATE CARBON MONOXIDE DETECTOR AT 6' ABOVE FF. AREA SMOKE OR HEAT DETECTION IS LOCATED AT THE CEILING LEVEL. DISABLE SMOKE SENSOR AND PROGRAM CARBON MONOXIDE SENSOR AS SUPERVISORY SIGNAL TO MAIN FACP.
 - ISOLATOR MODULES TO BE INSTALLED IN SINGLE FIRE ALARM TERMINAL CABINET WITH SUFFICIENT SPACE TO ACCOUNT FOR MODULES AND WIRING.



DEVICE ELEVATION DETAIL
NOT TO SCALE



DATE	REVISIONS	REQUIRED APPROVALS	CMP - PORTLAND SERVICE CENTER CANCO RD PORTLAND, ME	FIRE ALARM SYSTEM
9/13/16	PRELIMINARY DESIGN DRAWINGS - NOT FOR CONSTRUCTION	OWNER STATE FIRE MARSHAL LOCAL FIRE DEPARTMENT		EASTERN FIRE SERVICES, INC. AUBURN/LEWISTON INDUSTRIAL AIRPARK, AUBURN, MAINE 04210
9/20/16	REVISED PER OWNER COMMENTS - FACP & HEAT DETECTOR CHANGES	DRAWN BY CRM CHECKED BY BWB CONTRACTOR LICENSE #	JOB NUMBER 3511 SCALE AS SHOWN DATE 2/2/2017	
2/2/17	REVISED TO SHOW CHANGED DEVICES			