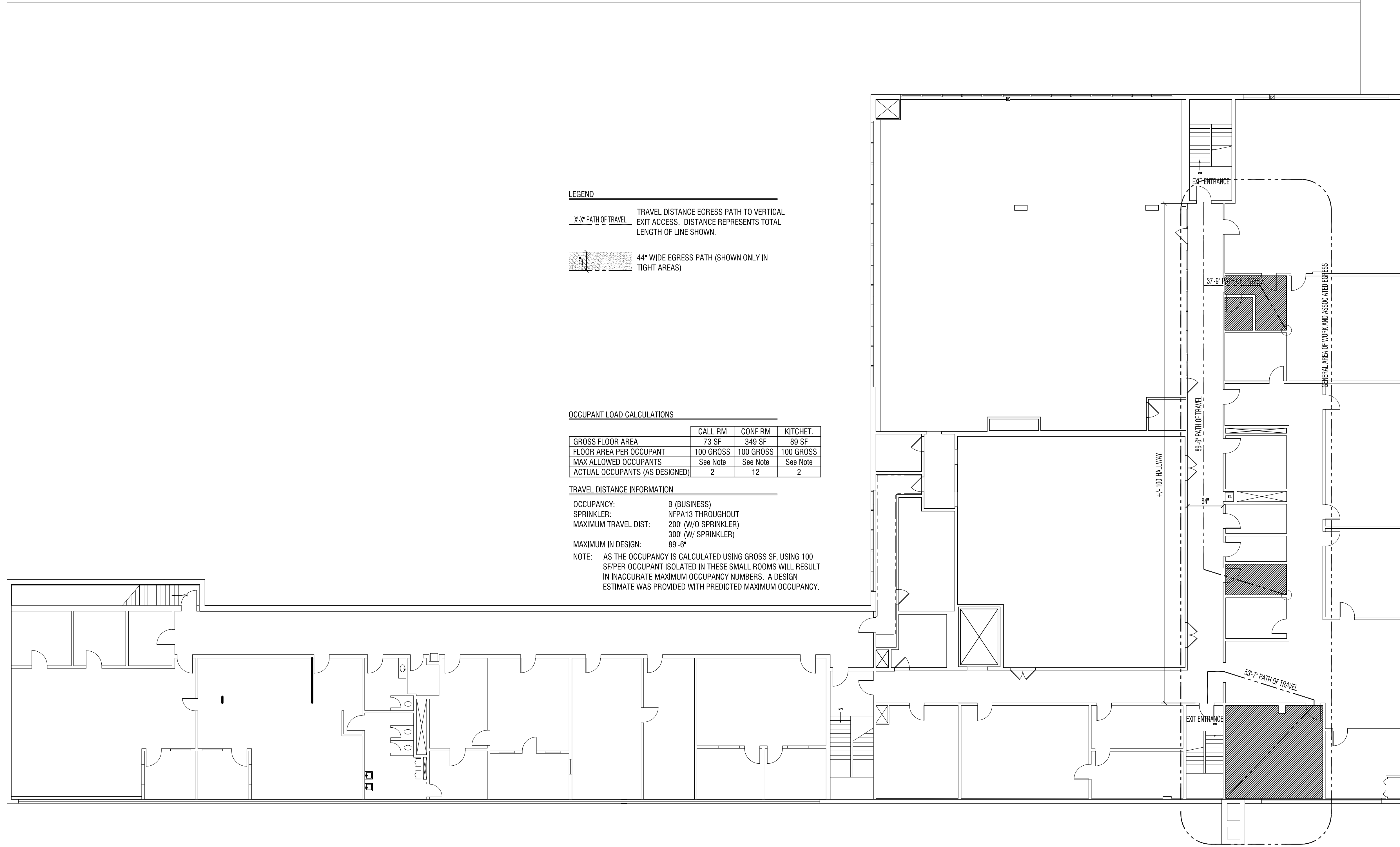


ARCH.D CADD Drawings, DO NOT REVISE MANUALLY.



LEGEND

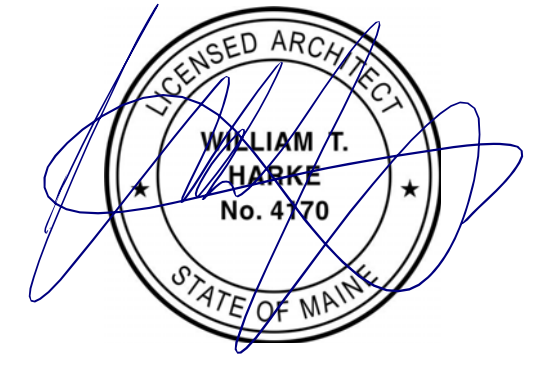
- X'-X\"/>**
- 44\"/>**

OCCUPANT LOAD CALCULATIONS

	CALL RM	CONF RM	KITCHET.
GROSS FLOOR AREA	73 SF	349 SF	89 SF
FLOOR AREA PER OCCUPANT	100 GROSS	100 GROSS	100 GROSS
MAX ALLOWED OCCUPANTS	See Note	See Note	See Note
ACTUAL OCCUPANTS (AS DESIGNED)	2	12	2

TRAVEL DISTANCE INFORMATION

OCCUPANCY: 8 (BUSINESS)
 SPRINKLER: NFPA13 THROUGHOUT
 MAXIMUM TRAVEL DIST: 200' (W/O SPRINKLER)
 300' (W/ SPRINKLER)
 MAXIMUM IN DESIGN: 89'-6"
 NOTE: AS THE OCCUPANCY IS CALCULATED USING GROSS SF, USING 100 SF/PER OCCUPANT ISOLATED IN THESE SMALL ROOMS WILL RESULT IN INACCURATE MAXIMUM OCCUPANCY NUMBERS. A DESIGN ESTIMATE WAS PROVIDED WITH PREDICTED MAXIMUM OCCUPANCY.



REV.	DESCRIPTION	DATE	BY	CK	APP	OWNER ENGINEER:	APPROVAL STAMP:	PE Stamp

DRAWING PREPARED BY:

LABELIA
Associates, LLC

ACCEPTED BY OE:

CMP ENGINEERING
CONFIDENTIAL, PROPRIETARY and TRADE SECRET INFORMATION
Property of CENTRAL MAINE POWER CO.

CENTRAL MAINE POWER

REV.	DATE	BY	DESCRIPTION	APP.	DATE
0.0A	04/27/2017	WITH	FOR PERMIT		

PORTLAND SERVICE CENTER
3RD FL RENOVATIONS-EGRESS ANALYSIS

SHEET 3 OF 8

PORTLAND - 162 CANCO ROAD **MAINE**

DR. WITH & JME

CK LABELLA

APP. --

DATE: --

SCALE: NOT APPLICABLE | FILE:0-001 PROJECT INFORMATION SHEET.DWG

G-002

REV. 0-0A