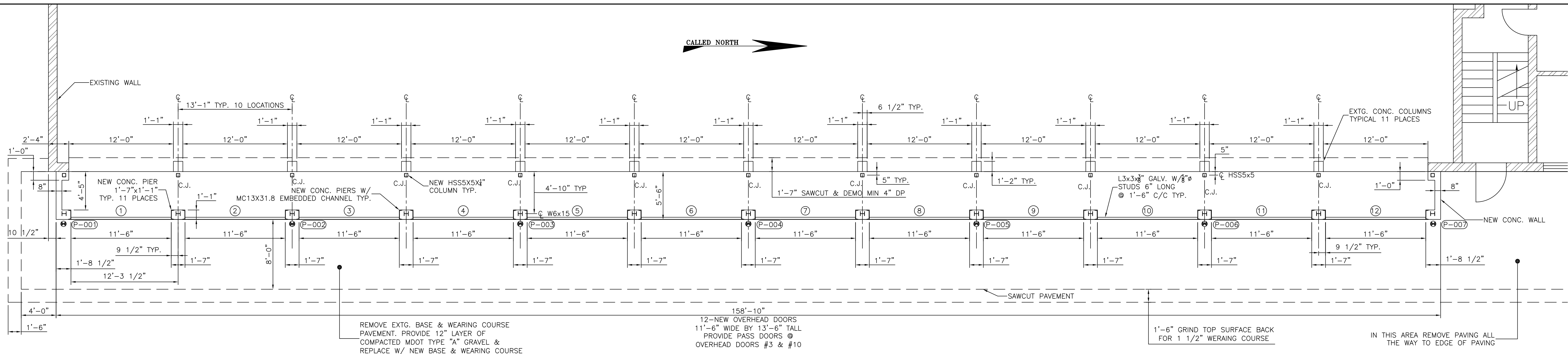


← CALLED NORTH →



NEW TRUCK BAY ADDITION PLAN VIEW

SCALE: 3/16" = 1'-0"

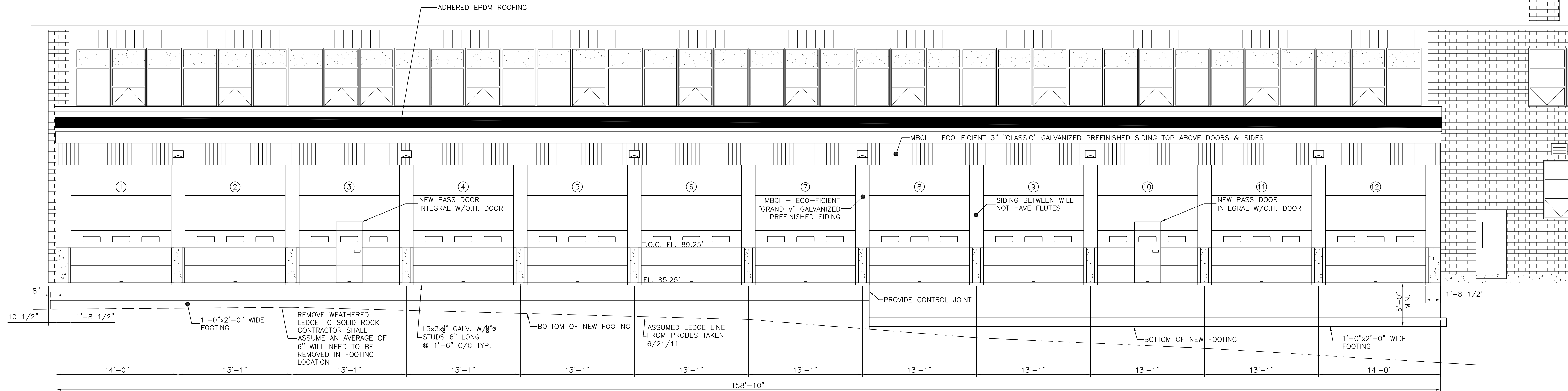
NOTE:
 CENTERLINE OF NEW PIERS SHALL BE PLACED @ CENTERLINE OF EXISTING PIERS HOWEVER CLEAR DISTANCE BETWEEN NEW PIERS SHALL BE 11'-6". CONTRACTOR SHALL LAYOUT NEW PIERS PRIOR TO START OF ANY WORK & NOTIFY OWNER OF ANY DIMENSION DISCREPANCIES.

REMOVE EXTG. BASE & WEARING COURSE PAVEMENT. PROVIDE 12" LAYER OF COMPACTED MDOT TYPE "A" GRAVEL & REPLACE W/ NEW BASE & WEARING COURSE

158'-10"
 12-NEW OVERHEAD DOORS
 11'-6" WIDE BY 13'-6" TALL
 PROVIDE PASS DOORS @ OVERHEAD DOORS #3 & #10

1'-6" GRIND TOP SURFACE BACK FOR 1 1/2" WEARING COURSE

IN THIS AREA REMOVE PAVING ALL THE WAY TO EDGE OF PAVING



NEW TRUCK DOCK ADDITION EAST ELEVATION

SCALE: 3/16" = 1'-0"

158'-10"
 12-NEW OVERHEAD DOORS
 11'-6" WIDE BY 13'-6" TALL
 PROVIDE PASS DOORS @ OVERHEAD DOORS #3 & #10

- NOTES:
- FIELD VERIFY ALL DIMENSIONS PRIOR TO ORDERING ANY MATERIALS. NOTIFY ENGINEER FOR RESOLUTION PRIOR TO BEGINNING ANY WORK.
 - NEW ADDITION ROOF DESIGN LOADS:
 SNOW LOAD = 50 PSF
 DRIFT SNOW LOAD = 58 PSF
 DEAD LOAD = 10 PSF
 - SHOP PRIME AND PAINT STRUCTURAL STEEL AS FOLLOWS:
 SURFACE PREP: SSPC-6 COMMERCIAL BLAST.
 PRIMER: ONE COAT DEVOE, CATHA-COAT 302H - REINFORCED INORGANIC ZINC PRIMER OR OWNER-APPROVED EQUAL. MINIMUM DFT = 2 MILS.
 TOP COAT: ONE COAT DEVOE, BAR RUST 235 MULTI-PURPOSE EPOXY COATING OR OWNER-APPROVED EQUAL. MINIMUM DFT = 4 MILS. COLOR BY OWNER.
 - ALL ELECTRICAL DEMOLITION & NEW CONSTRUCTION WILL BE BY OWNER'S ELECTRICAL CONTRACTOR

5. CONCRETE:
 f'c=4000 PSI
 SLUMP=2" TO 4" UNLESS SUPERPLASTICIZER IS USED
 MAX STONE SIZE=3/4"
 W/C RATIO=0.45
 AIR CONTENT%=6% +/- 1%
 COVER=3" UNLESS NOTED OTHERWISE
6. REINFORCING STEEL Fy=60,000 PSI

LEGEND

- (P-005) - TEST PROBES PERFORMED BY MAINE TEST BORINGS ON 6/21/11
- C.J. - CONTROL JOINT

This document and any attachments are considered:
BUSINESS CONFIDENTIAL
PROTECTED CRITICAL INFRASTRUCTURE INFORMATION

REFERENCE DRAWINGS	
51-36	LEDGE PLOT PLAN

NO.	REVISION	DATE	BY	CK	P. E. No.	P. E. No.
0	ISSUED FOR BID	07/11/11	JFB	DES	DES	6097

Professional Engineer Seal
 DANIEL E. SPAULDING
 No. 6097
 REGISTERED PROFESSIONAL ENGINEER

DESIGNED DES
 DRAWN JFB
 CHECKED DES
 APPROVED DES
 REVIEWED DES

2011 EAST TRUCK BAY EXTENSION
 PLAN & ELEVATION
 PORTLAND SERVICE CENTER

PORTLAND MAINE
 CENTRAL MAINE POWER COMPANY
 IBERDROLA SYSTEM ENGINEERING
 USA
 DATE: 03/16/2011
 SCALE: AS NOTED

742-64-001
 REV 0

NO.	REVISION	DATE	BY	CK	P. E.

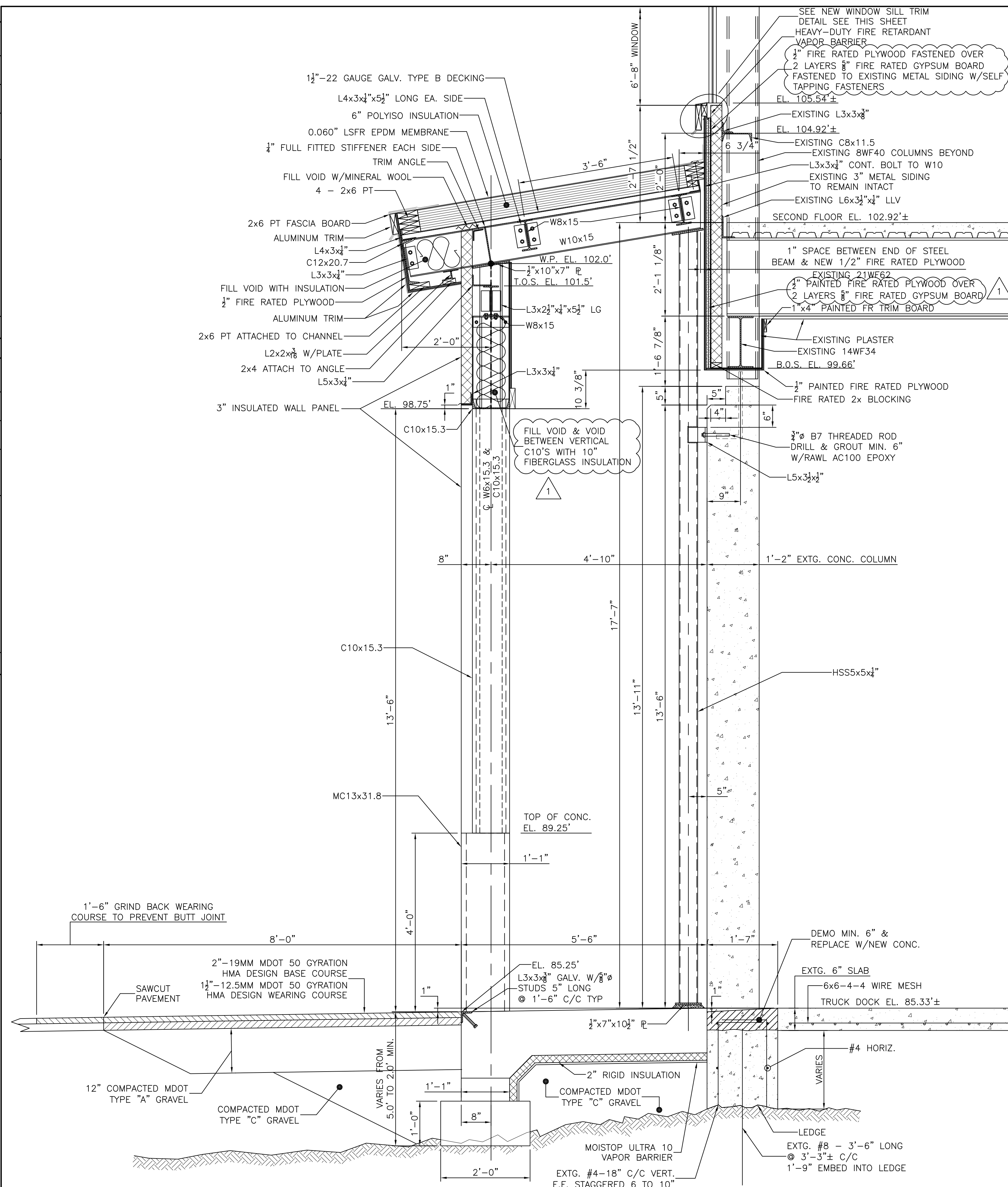
ENGINEERING CONSULTANT - LOGO - ADDRESS
 SPAULDING ENGINEERING
 AND CONSTRUCTION SERVICES, INC.
 WATERVILLE, MAINE
 24 COMMON STREET

THIS DRAWING SHALL BE REVISED ON THE CAD SYSTEM ONLY

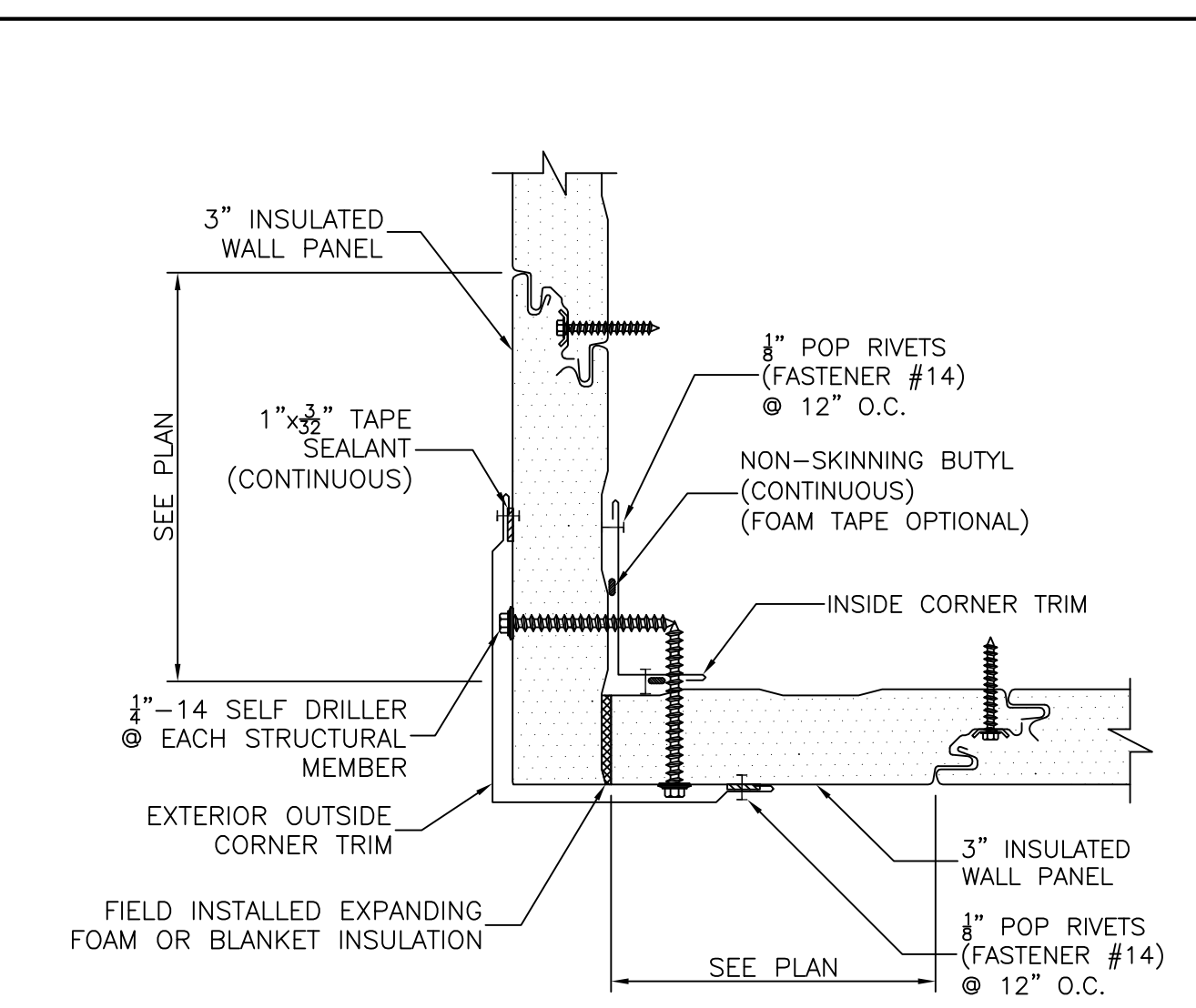
NO.	REVISION	DATE	BY	CK	P.E.

ENGINEERING CONSULTANT - LOGO - ADDRESS
SPAULDING ENGINEERING AND CONSTRUCTION SERVICES, INC.
 24 COMMON STREET
 WATERVILLE, MAINE

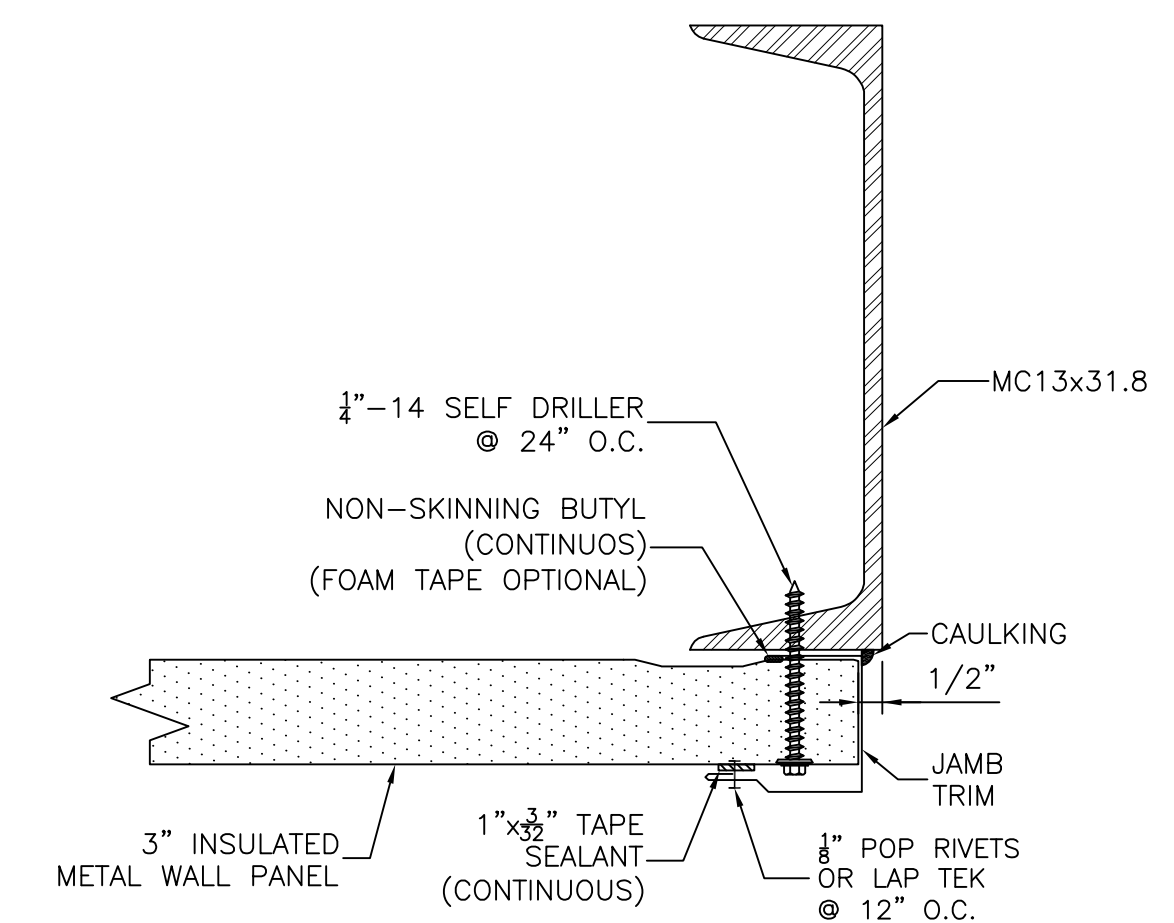
THIS DRAWING SHALL BE REVISED ON THE CADD SYSTEM ONLY



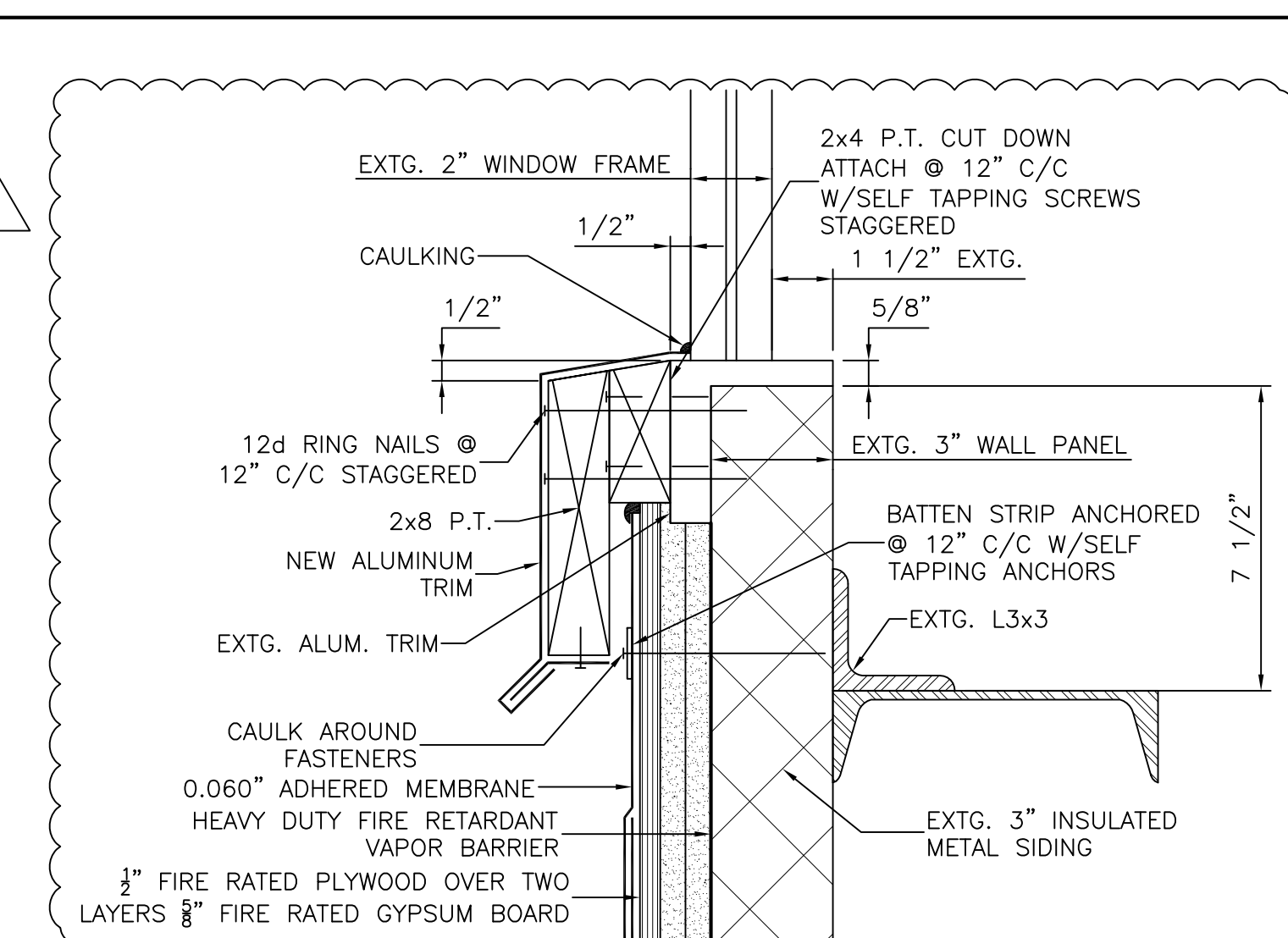
NEW CROSS SECTION
 SCALE: 3/4" = 1'-0"



INSULATED METAL WALL PANEL TYPICAL OUTSIDE CORNER DETAIL
 SCALE: N.T.S.



INSULATED METAL WALL PANEL TYPICAL DOOR JAMB DETAIL
 SCALE: N.T.S.



NEW TRIM DETAIL @ EXISTING WINDOWS
 SCALE: 3" = 7'-0"

This document and any attachments are considered:
BUSINESS CRITICAL
PROTECTED CRITICAL INFRASTRUCTURE INFORMATION

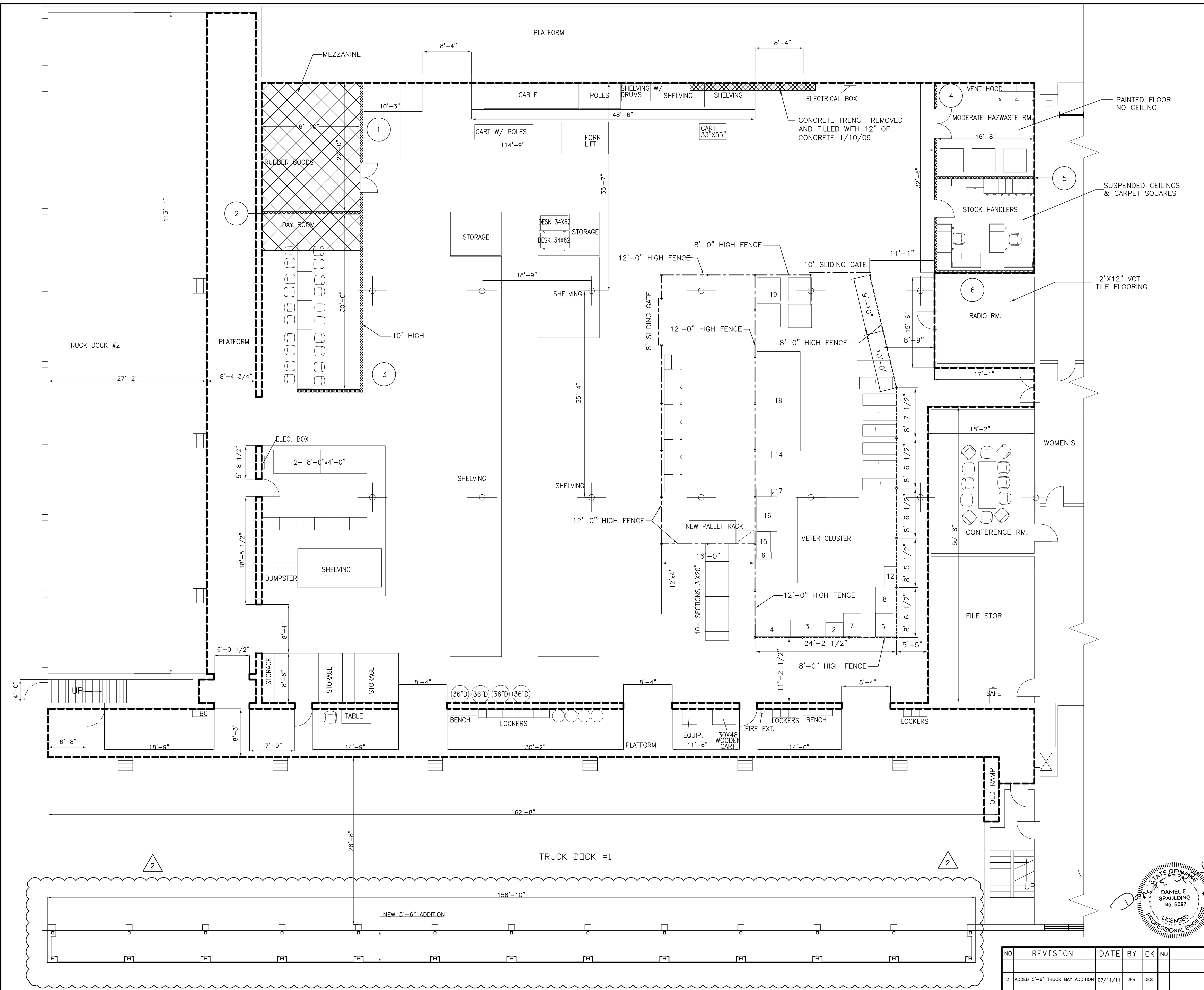
REFERENCE DRAWINGS	

DD-1

NO.	REVISION	DATE	BY	CK	P. E. SIMPLIFIED	P. E. No.
1	ADDED 2 LAYERS 5/8" GYPSUM BOARD & 10" FIBERGLASS INSULATION	07/19/2011	JFB	DES	DES	6097
0	ISSUED FOR BID	07/11/2011	JFB	DES	DES	6097

Professional Engineer Seal
 DANIEL E. SPAULDING
 No. 6097
 LICENSED PROFESSIONAL ENGINEER
 07/19/11

DESIGNED DES	2011 EAST TRUCK BAY EXTENSION NEW CROSS SECTION & DETAILS PORTLAND SERVICE BUILDING PORTLAND MAINE CENTRAL MAINE POWER COMPANY IBERDROLA SYSTEM ENGINEERING USA DATE: 3/16/2011 SCALE: AS NOTED	742-61-032 REV 1
DRAWN JFB		
CHECKED DES		
APPROVED DES		
REVIEWED		

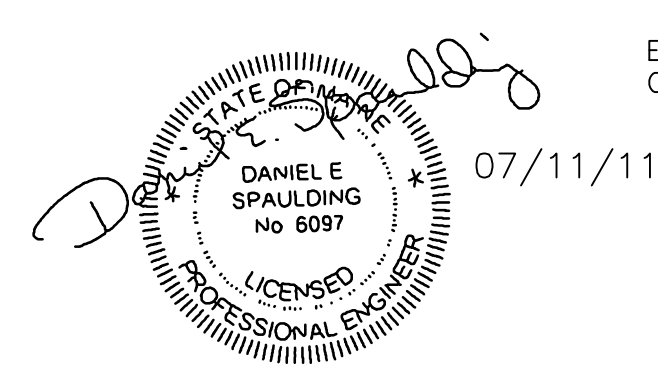
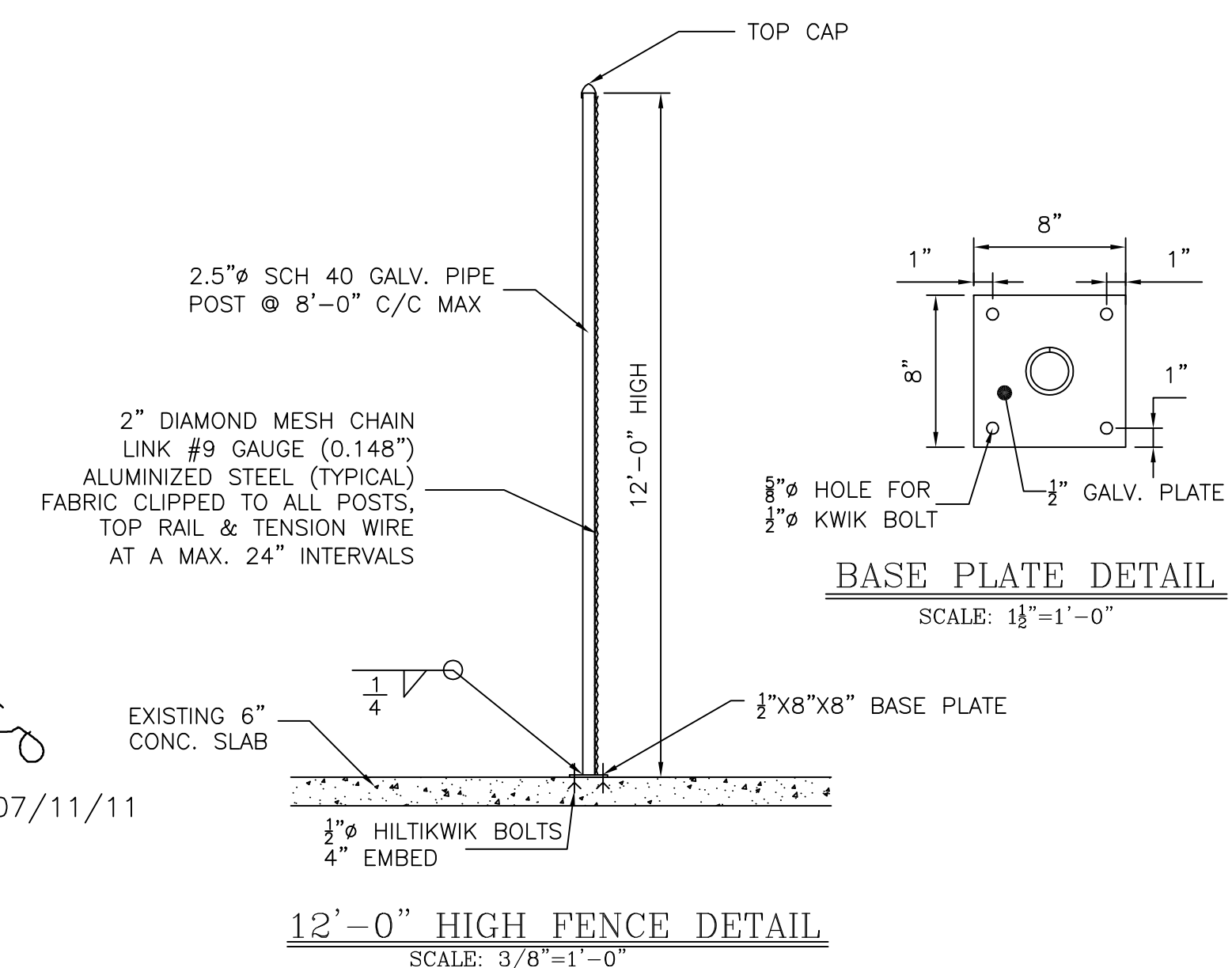


REPLACEMENT WALL SCHEDULE

WALL #	DESCRIPTION
1 RUBBER GOODS STORAGE AREA	NON-LOAD BEARING WALLS WITH FIRE RESISTANT 2X4 STUDS @ 16"O.C. WITH 1/2" FIRE RESISTANT PLYWOOD ON BOTH SIDES OF WALL STUDS. WALL HEIGHT APPROXIMATELY 8' WITH MEZZANINE ABOVE SUPPORTED BY STEEL FRAME WORK.
2 LINE CREW QUARTERS USED IN MORNING AND END OF DAY	NON-LOAD BEARING WALL WITH FIRE RESISTANT 2X4 STUDS @ 16"O.C. WITH 1/2" FIRE RESISTANT PLYWOOD ON BOTH SIDES OF WALL STUDS. APPROXIMATELY 10' IN HEIGHT. NO CEILING IS PLANNED FOR THIS AREA WHICH WILL BE OPEN TO THE WAREHOUSE INTERIOR.
3 STOCK HANDLERS OFFICE & HAZARDOUS WASTE ROOM	NON-LOAD BEARING WALL WITH STEEL-6" STUDS CWN 16 @ 24"O.C. WITH 1/2" FIRE RESISTANT PLYWOOD ON EXTERIOR AND INSIDE OF MODERATE HAZARDOUS WASTE STORAGE AND 5/8" TYPE X GYPSUM BOARD ON INSIDE OF STOCK HANDLERS OFFICE. APPROXIMATELY 26' WALL HEIGHT. SUSPENDED CEILING IN STOCK HANDLERS OFFICE.
4 STOCK HANDLER OFFICE	NON LOAD BEARING WALL WITH STEEL-6" STUDS CWN 16 @ 24"O.C. WITH 1/2" FIRE RESISTANT PLYWOOD ON EXTERIOR AND 5/8" TYPE X GYPSUM BOARD ON INSIDE OF ROOM. WALL HEIGHT APPROXIMATELY 26'.

NOTE: ALL AREAS WILL HAVE AN AUTOMATIC SPRINKLER SYSTEM.

- NEW FENCING
- EXISTING FENCING CUT DOWN TO 8'-0" HIGH
- WAREHOUSE, TRUCK BAY #1, TRUCK BAY #2, RUBBER GOODS, STOCK HANDLERS & MODERATE HAZWASTE ROOM CONCRETE FLOORS WERE COATED WITH AN EPOXY FLOOR SYSTEM IN 2007
- SURFACE PREP: WET GRINDING TO ACHIEVE ANICRI CSP-3 SURFACE PROFILE
- FLOOR SYSTEM: PORTECTIVE FLOORINGS & LININGS URE-CRETE 4410FS 1/4" MODERATE SLIP RESISTANT SCURRY TYPE TROWEL APPLIED FLOORING SYSTEM. WITH A 1000 CS SYSTEM GENERAL PURPOSE EPOXY FLOOR COATING @ 0.025" THICKNESS



NO	REVISION	DATE	BY	CK	NO	REVISION	DATE	BY	CK
2	ADDED 5'-6" TRUCK BAY ADDITION	07/11/11	JFB	DES					
1	RECORD DRAWING	2/6/08	JFB	DES					
0	ISSUED FOR CONSTRUCTION	10/08/07	JFB	DES					

SPaulding ENGINEERING AND CONSTRUCTION SERVICES, INC.
 24 COMMON STREET WATERVILLE, MAINE
 PORTLAND SERVICE BUILDING
 PCB REMEDIATION PROJECT
 WAREHOUSE & TRUCK BAY PLAN
 REPLACEMENT WALL CONFIGURATION & FENCE LAYOUT

CENTRAL MAINE POWER COMPANY
 ENGINEERING DEPARTMENT
 SCALE AS NOTED DATE 4/03/07

742-61-28

WAREHOUSE & TRUCK BAY PLAN
 SCALE: 1/8"=1'-0"

THIS DRAWING SHALL BE USED ONLY FOR THE SUBD. SYSTEM ONLY