

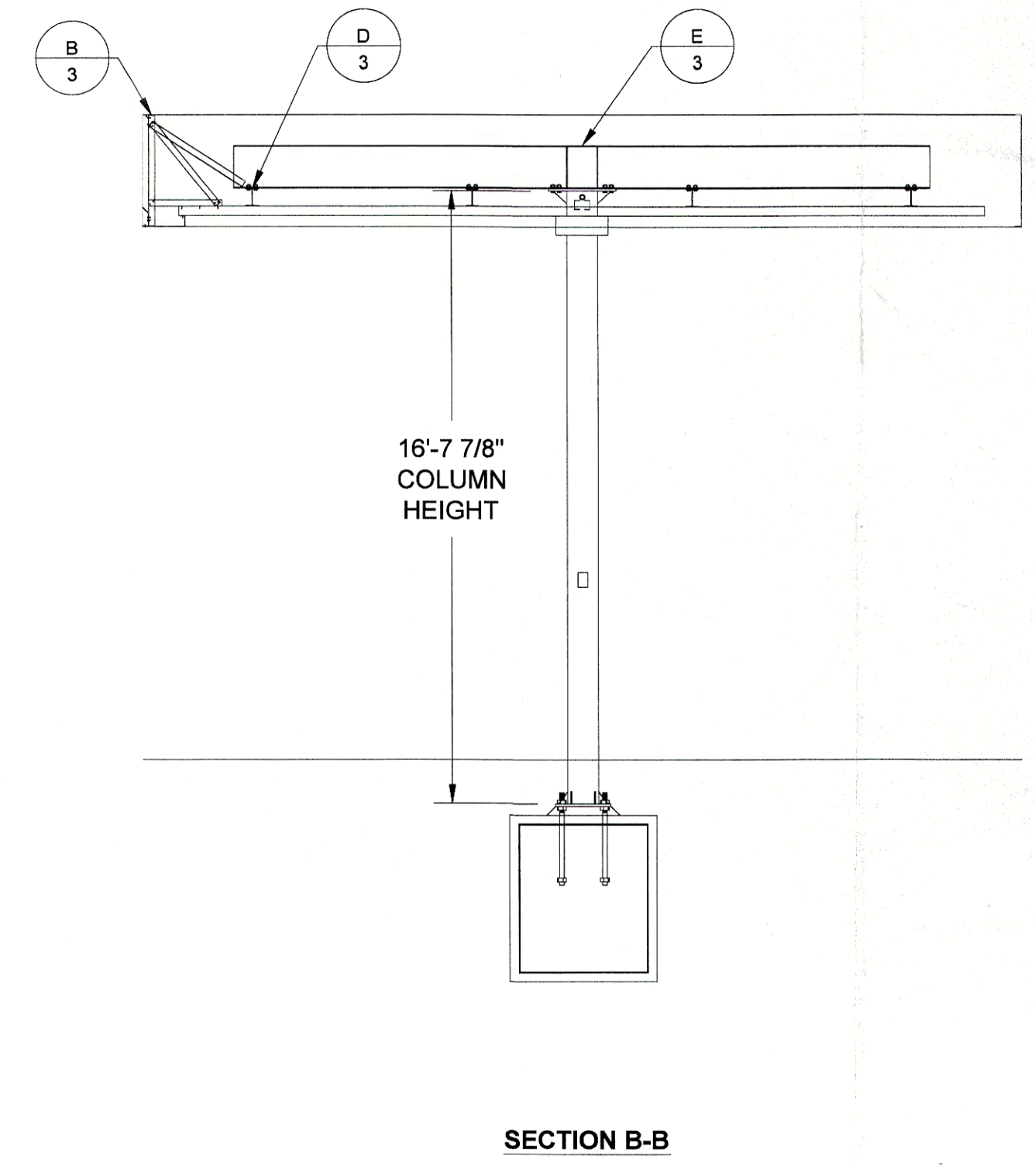
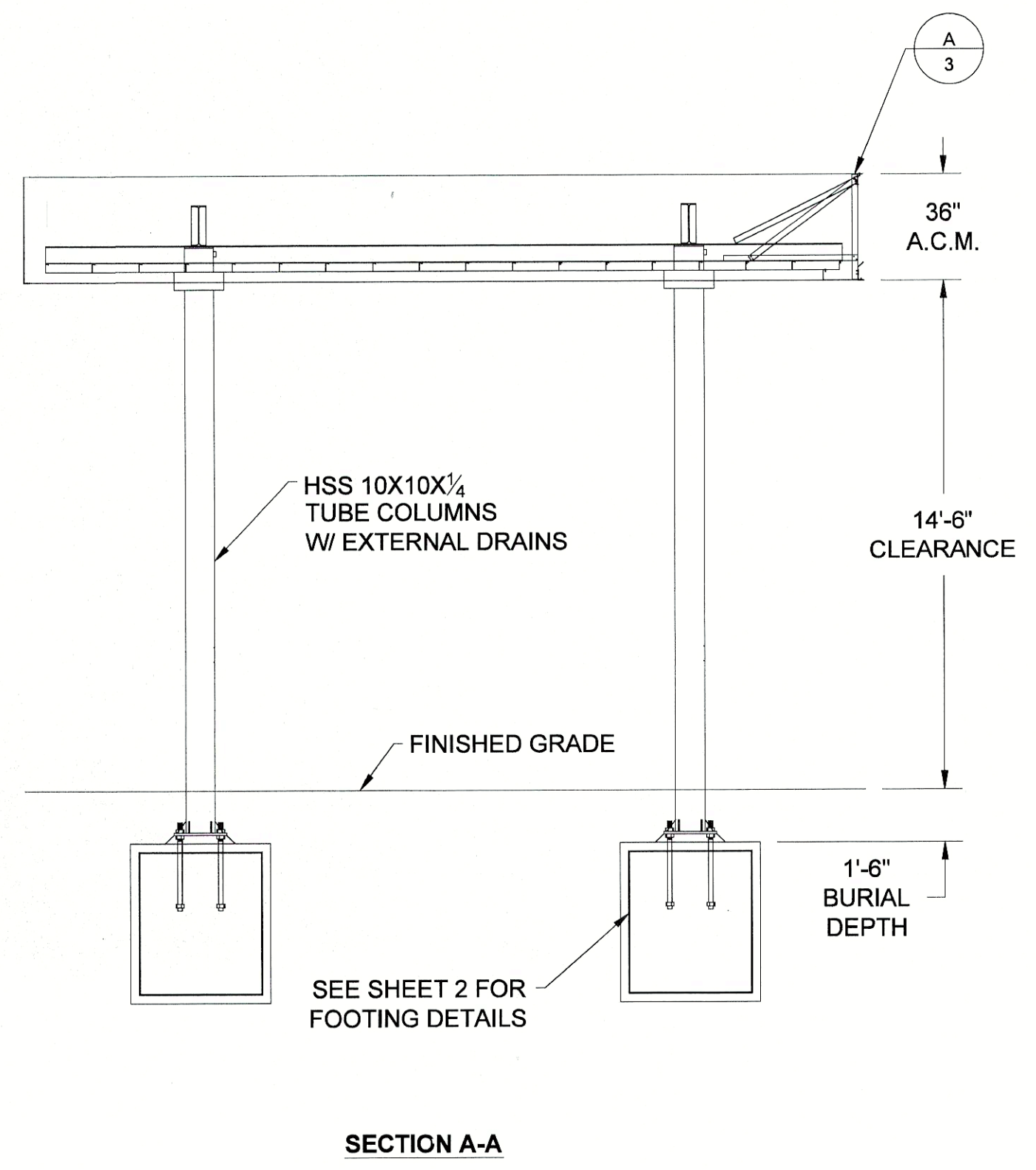
KEY:
 C 3 DETAIL LETTER
 3 SHEET

STEEL NOTES:

1. ALL DESIGN, FABRICATION AND ERECTION OF STRUCTURAL STEEL SHALL CONFORM TO THE LATEST AISC SPECIFICATIONS DESIGN, FABRICATION, AND ERECTION OF COLD FORMED STEEL SECTIONS SHALL CONFORM TO THE LATEST AISI SPECIFICATIONS.
2. STRUCTURAL MATERIALS:
 WIDE FLANGE SECTIONS - ASTM A992 OR A572 GR 50 (Fy = 50 KSI)
 ANGLES/CHANNELS- ASTM A36 (Fy = 36 KSI)
 HOLLOW STRUCTURAL SECTIONS (TUBE) - ASTM A500 GR B (Fy = 46 KSI)
 PIPE SECTIONS - ASTM A53, GR. B (Fy = 35 KSI)
 PLATES - ASTM A36 (Fy = 36 KSI)
 ROOF DECK - ASTM A853, GR. 40 (Fy = 40 KSI), GALVANIZED (G60) WITH BAKED ENAMEL FINISH
 STEEL OUTRIGGERS - ASTM A853 GR. CS (Fy = 25 KSI), GALVANIZED (G90) PER ASTM 924
 STRUCTURAL BOLTS - ASTM A325
 ANCHOR BOLTS - ASTM F1554 GR. 36; OR ASTM A307 MATERIAL (Fy = 36 KSI)
3. WELDING OF STRUCTURAL STEEL SHALL BE IN ACCORDANCE WITH LATEST ANSI/AWS D1.1.
4. FIELD CONNECTIONS SHALL BE BOLTED CONNECTIONS UNLESS SPECIFIED ON DRAWING.
5. ALL STRUCTURAL BOLTED CONNECTIONS SHALL USE ASTM 325 BOLTS. BOLTED JOINTS SHALL BE TIGHTENED TO SNUG TIGHT PER LATEST RCSC SPECIFICATION.
6. STRUCTURAL STEEL SHALL BE SHOP COATED WITH A GRAY-OXIDE RUST INHIBITIVE PRIMER, FIELD TOUCH-UP, FINISH PAINTING, AND MAINTENANCE SHALL BE THE RESPONSIBILITY OF THE OWNER (UNLESS OTHERWISE SPECIFIED).

SPECIFIED DESIGN LOADS:

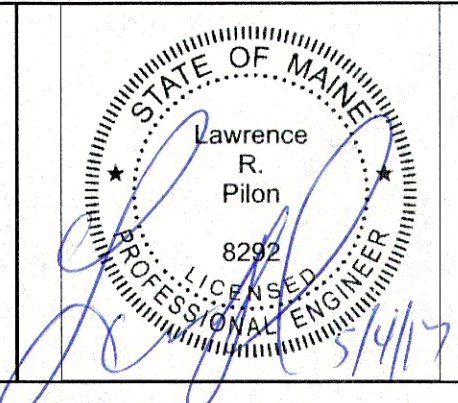
DESIGN LOADS PER 2015 INTERNATIONAL BUILDING CODE REQUIREMENTS:
 RISK CATEGORY II
 ROOF LIVE LOAD = 50 PSF
 FLAT ROOF SNOW LOAD = 50 PSF
 BASED ON GROUND SNOW LOAD = 50 PSF
 WIND LOADS:
 LATERAL = 25 PSF (USING 0.6W FOR ASD)
 UPLIFT = 20 PSF (USING 0.6W FOR ASD)
 BASED ON 120 MPH ULTIMATE WIND SPEED PER ASCE 7 EXPOSURE "B"
 DEAD LOADS:
 DECK / GUTTER / LIGHTS - 5 PSF
 FASCIA WT - 15 PLF
 STRUCTURAL STEEL - SELF WT
 CONCRETE - 145 PCF



AUSTIN MOHAWK & CO., LLC.
 2175 BEECHGROVE PLACE
 UTICA, NY 13501
 PHONE: 315.793.3000
 TOLL FREE: 1.800.765.3110
 FAX: 315.793.9370
 WEBSITE: www.austinmohawk.com
 E-MAIL: info@austinmohawk.com

CERTIFIED BY:

LAWRENCE R. PILON, PE
 51 MAPLEVIEW DRIVE
 PENNELLVILLE, NY 13132
 LICENSE # _____



JOB # -

QUOTE #
 Q0170490

DRAWING #
 17-039

24'-0" X 24'-0" X 2 COLUMN CANOPY

CUSTOMER:
 CUMBERLAND FARMS, INC.

LOCATION: PORTLAND, ME

SCALE: N.T.S. **DRAWN BY:** DBIII

DATE: 04.28.17 **SHEET:** 1 OF 3

Notice - Austin Mohawk & Co., LLC claims proprietary rights in the information disclosed on this drawing. It is issued in confidence for engineering information only and may not be used, in whole or in part, to manufacture anything whether or not shown hereon, reproduced or disclosed to anyone without direct written permission from Austin Mohawk LLC