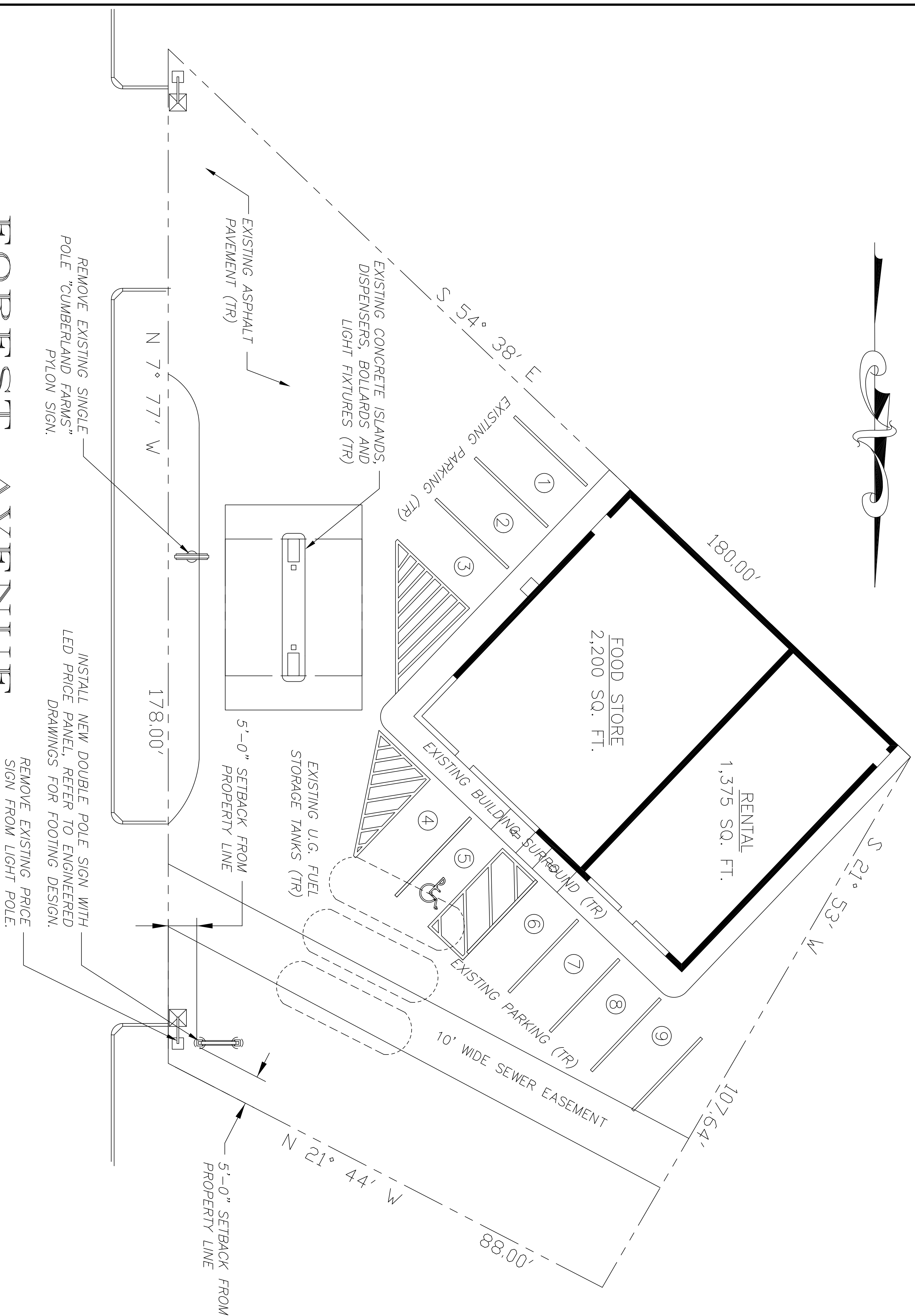


FOREST AVENUE



- ### GENERAL NOTES
1. PROPERTY LINE AND EXISTING SITE INFORMATION DIGITIZED FROM A PLAN ENTITLED "SITE PLAN" BY CUMBERLAND FARMS, INC. DRAWN SEPTEMBER 10, 2003. SCALE 1"=20'-0".
 2. IT IS THE RESPONSIBILITY OF THE CONTRACTOR TO REVIEW ALL OF THE DRAWINGS & SPECS ASSOCIATED WITH THIS PROJECT WORKSCOPE PRIOR TO THE INITIATION OF CONSTRUCTION. SHOULD THE CONTRACTOR FIND A CONFLICT WITH THE DOCUMENTS, RELATIVE TO THE SPECIFICATIONS OR APPLICABLE CODES, IT IS THE CONTRACTOR'S RESPONSIBILITY TO NOTIFY THE PROJECT ENGINEER BEFORE THE START OF CONSTRUCTION. FAILURE BY THE CONTRACTOR TO NOTIFY THE PROJECT ENGINEER SHALL CONSTITUTE ACCEPTANCE OF FULL RESPONSIBILITY BY THE CONTRACTOR TO COMPLETE THE SCOPE OF WORK AS DEFINED BY THE DRAWINGS AND IN FULL CONFORMANCE WITH LOCAL REGULATIONS AND CODES.
 3. ALL WORK SHALL CONFORM TO THE CITY OF PORTLAND, ME AND OSHA STANDARDS AND GUIDELINES ALONG WITH ALL OTHER APPLICABLE LOCAL, STATE, & FEDERAL REQUIREMENTS.
 4. LOCATION OF ALL EXISTING & PROPOSED SERVICES ARE APPROXIMATE AND MUST BE CONFIRMED INDEPENDENTLY WITH LOCAL UTILITY COMPANIES PRIOR TO COMMENCEMENT OF ANY CONSTRUCTION OR EXCAVATION. ALL UTILITY SERVICE CONNECTION POINTS SHALL BE CONFIRMED INDEPENDENTLY BY THE CONTRACTOR IN THE FIELD PRIOR TO THE COMMENCEMENT OF CONSTRUCTION.
 5. ALL UTILITY LOCATIONS ARE APPROXIMATE. IT IS THE RESPONSIBILITY OF THE CONTRACTOR TO LOCATE CONDUITS, PRODUCT PIPING, ETC. PRIOR TO COMMENCEMENT OF EXCAVATION OF ANY TYPE.
 6. ALL EXCAVATED UNSUITABLE MATERIAL MUST BE TRANSPORTED TO AN APPROVED DISPOSAL LOCATION.
 7. IT SHALL BE THE CONTRACTOR'S RESPONSIBILITY TO NOTIFY "DIG-SAFE" (1-888-344-7233) 72 HOURS PRIOR TO ANY EXCAVATION ON THIS SITE. CONTRACTOR SHALL ALSO NOTIFY THE LEE WATER AND SEWER DEPARTMENTS TO MARK OUT THEIR UTILITIES.
 8. THE LIMITS OF WORK SHALL BE CLEARLY MARKED IN THE FIELD PRIOR TO THE START OF CONSTRUCTION OR SITE CLEARING. CONTRACTOR IS RESPONSIBLE FOR PROVIDING ALL NECESSARY TRAFFIC SAFETY MEASURES AT ALL TIMES IN ACCORDANCE WITH ALL APPLICABLE REGULATIONS INCLUDING M.T.A. APPROVAL AND POLE DETAILS AS REQUIRED.
 9. CONTRACTOR IS RESPONSIBLE FOR ALL EXCAVATION TO BE PERFORMED IN ACCORDANCE WITH CURRENT OSHA STANDARDS, AS WELL AS ADDITIONAL PROVISIONS TO ASSURE STABILITY OF CONTIGUOUS STRUCTURES.
 10. IN CASE OF DISCREPANCIES BETWEEN PLANS, THE SITE PLAN WILL SUPERSEDE IN ALL CASES. NOTIFY CUMBERLAND FARMS, INC. PLANNING DEPARTMENT AT 508-270-1450 OF ANY CONFLICTS.
 11. ALL FEATURES NOT LABELED AS "NEW", "PROPOSED", OR "TO BE REMOVED" SHALL BE CONSIDERED TO BE "EXISTING TO REMAIN".

OWNER/OPERATOR: (day or night)
 CUMBERLAND GULF GROUP OF COMPANIES
 100 CROSSING BLVD.
 FRAMINGHAM, MA 01702
 (508) 270-1400

DATE	REV. BY	DESCRIPTIONS	REVISIONS
			16,198 SQUARE FEET
			.37 ACRES
			V# 0492
			Store# 5570
			Gas Station# 852101

1132-1144 Forest Avenue (US HWY 302)
 PORTLAND, MAINE

CUMBERLAND FARMS, INC.
 100 CROSSING BLVD.
 FRAMINGHAM, MA 01702

SCALE: 1" = 10'-0"
 DATE: 12/20/2010
 FILE: C10038SG.DWG
 DRAWN BY: C.A.P.
 CHECKED BY: M.P.

LOCATION OF NEW PYLON SIGN