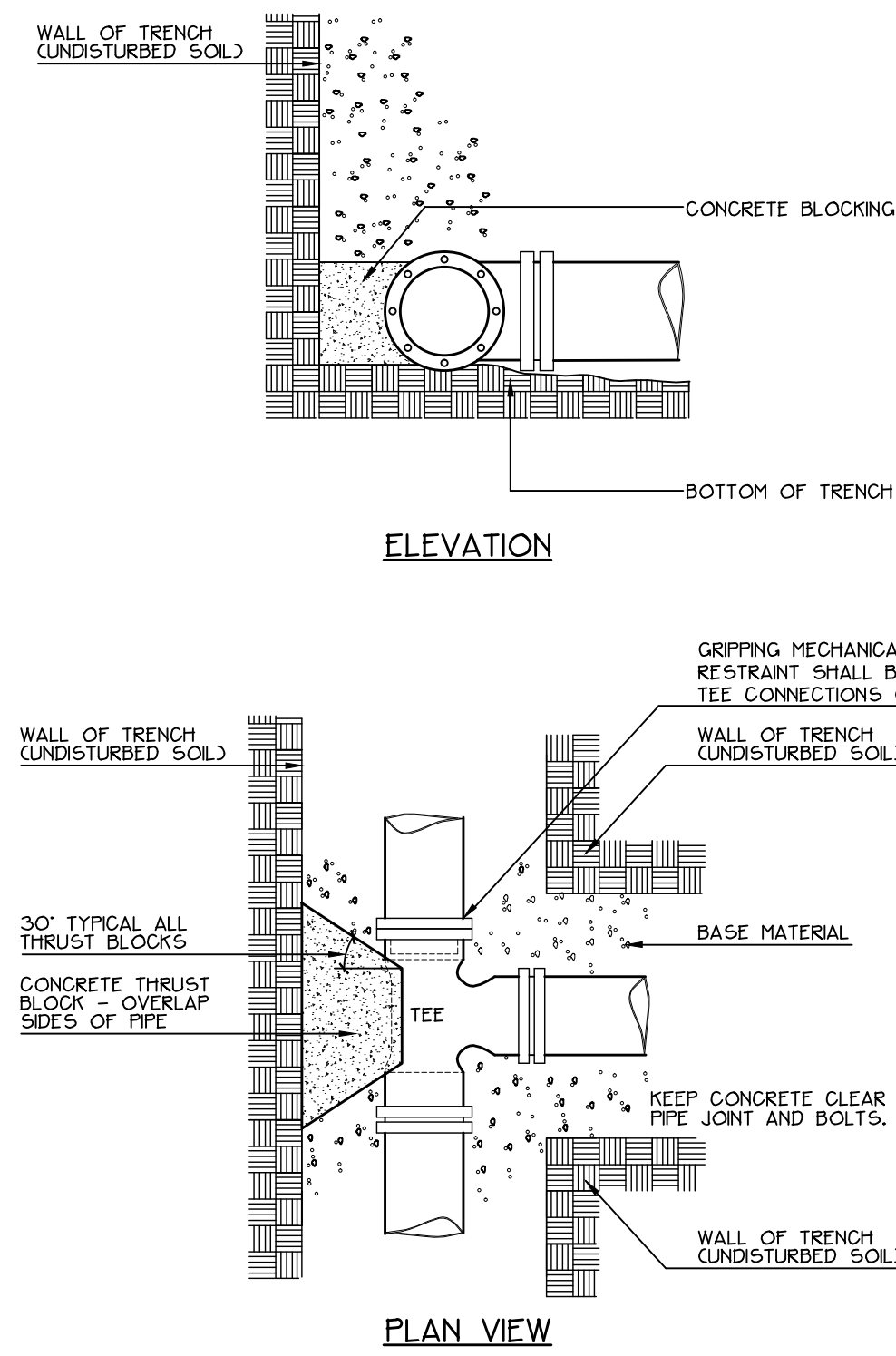


1 PORTLAND WATER DISTRICT PIPE TRENCH DETAIL

NOT TO SCALE

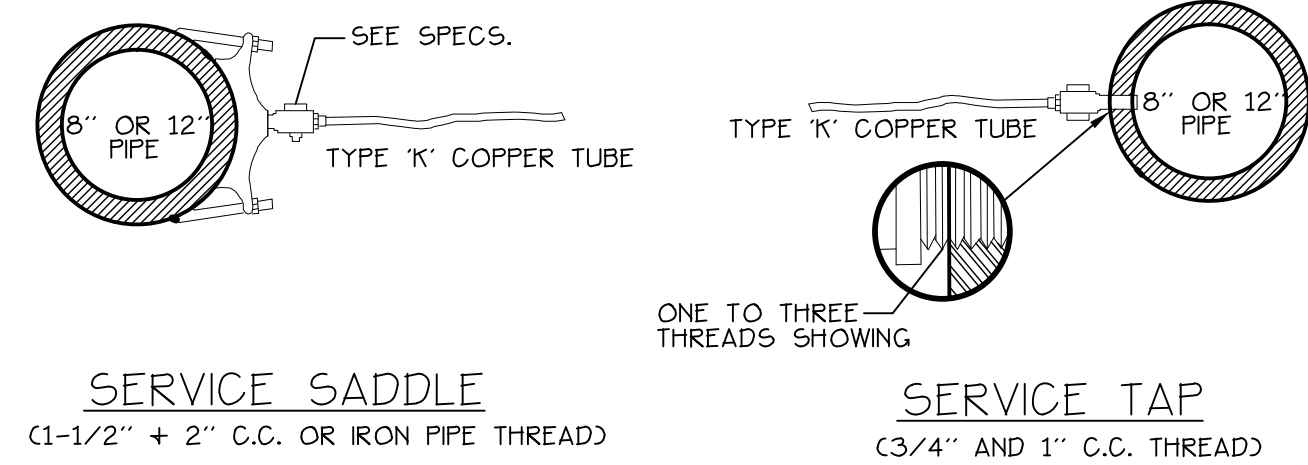


- INSTALL POLY BARRIER BETWEEN PIPE AND ALL THRUST BLOCKS.
- ANY MODIFICATION TO THRUST BLOCK SIZING OR PIPE RESTRAINT REVISIONS SHALL BE APPROVED IN WRITING BY THE LANDSCAPE ARCHITECT PRIOR TO IMPLEMENTATION IN THE FIELD.
- ANY WORK RELATING TO WATER PIPING OF DETAILS SHALL BE IN ACCORDANCE WITH THE PORTLAND WATER DISTRICT SPECIFICATIONS.

BEARING SURFACE REQUIRED IN SQUARE FEET					
PIPE SIZE	1/32 BEND	1/16 BEND	1/8 BEND	1/4 BEND	TEES/CAPS
6"	1.0	1.5	2.5	4.5	3.5
8"	1.5	2.5	4.5	8.0	5.5

5 STANDARD TEE BLOCKING

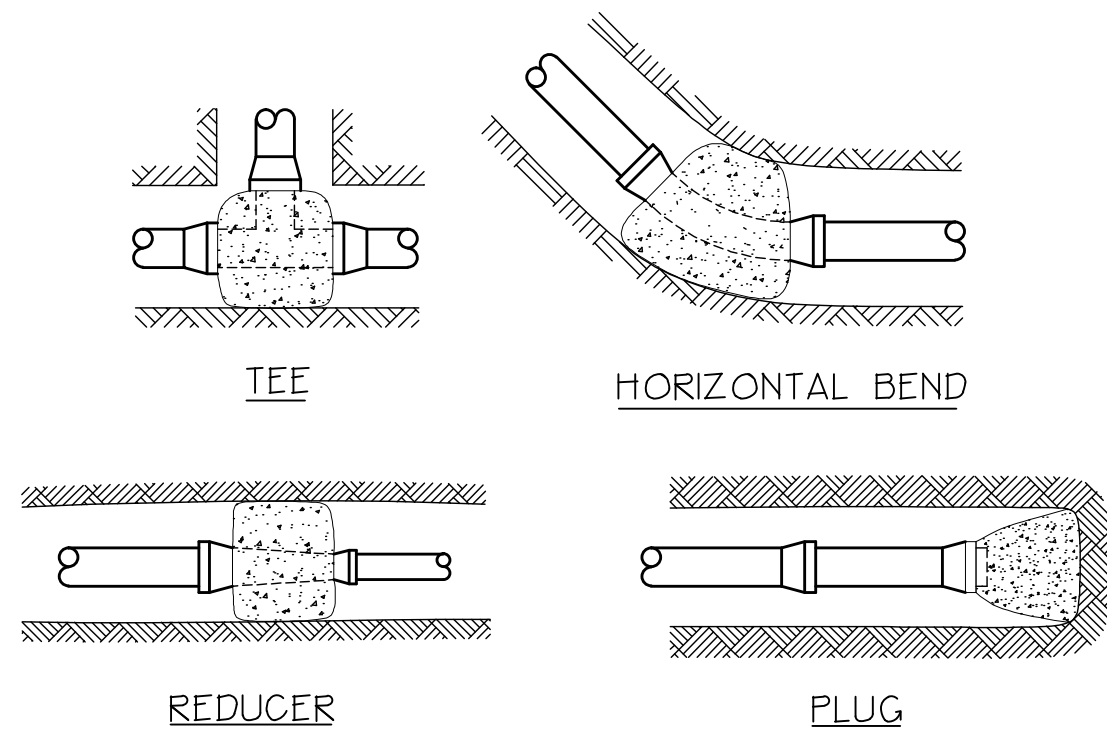
NOT TO SCALE



NOTE: SERVICE CONNECTIONS (DIRECT TAPS AND SERVICE CLAMPS) WILL BE INSTALLED SO THAT THE OUTLET IS AT AN ANGLE OF NOT MORE THAN 45° ABOVE THE HORIZONTAL. ALWAYS PUT A BEND OR 'GOOSENECK' IN THE SERVICE LINE PRIOR TO CONNECTING TO PROVIDE FLEXIBILITY AND 'GIVE' TO COUNTERACT THE EFFECTS OF A LOAD DUE TO SETTLEMENT OR EXPANSION AND/OR CONTRACTION (SEE DETAILS).

2 WATER MAIN SERVICE CONNECTIONS

NOT TO SCALE

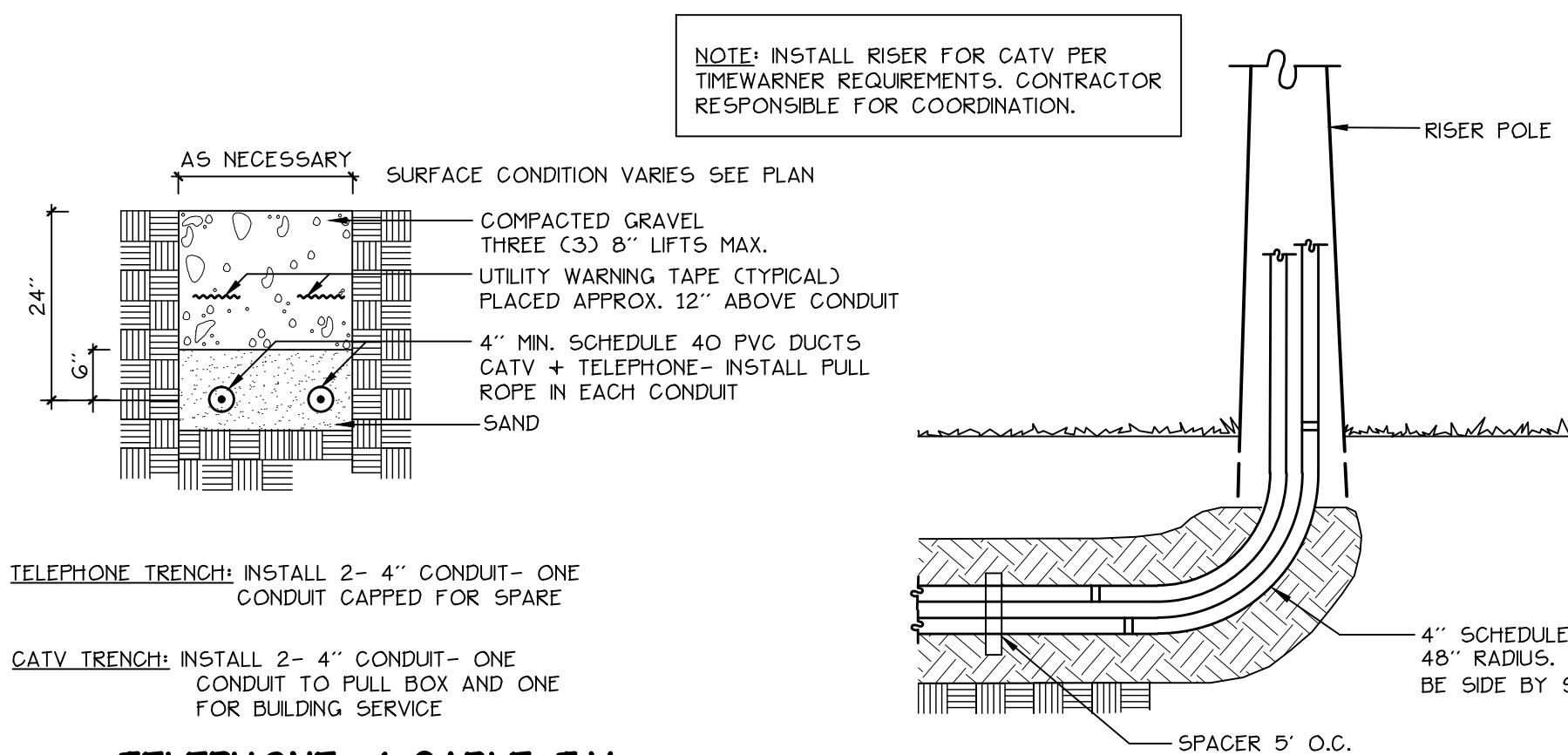


PIPE SIZE (IN)	BEARING SURFACE, SQ. FT.			
	TEE	90°	45°	22 1/2°
2	1.0	1.0	1.0	1.0
3	1.0	1.0	1.0	1.0
4	1.2	1.0	1.0	1.0
6	2.6	1.4	1.0	1.0
8	4.6	2.5	1.4	1.0
10	7.2	3.9	2.0	1.0
12	10.4	5.6	2.8	1.5
14	14.2	7.7	3.9	2.0
16	18.5	10.0	5.0	2.5
18	23.4	12.7	6.4	3.3

ANCHOR ALL 1/16, 1/8 + 1/4 BENDS. ANCHOR ALL TEES W/ BRANCH LARGER THAN 6". PLACE CONCRETE AGAINST UNDISTURBED EARTH OR COMPACTED FILL.

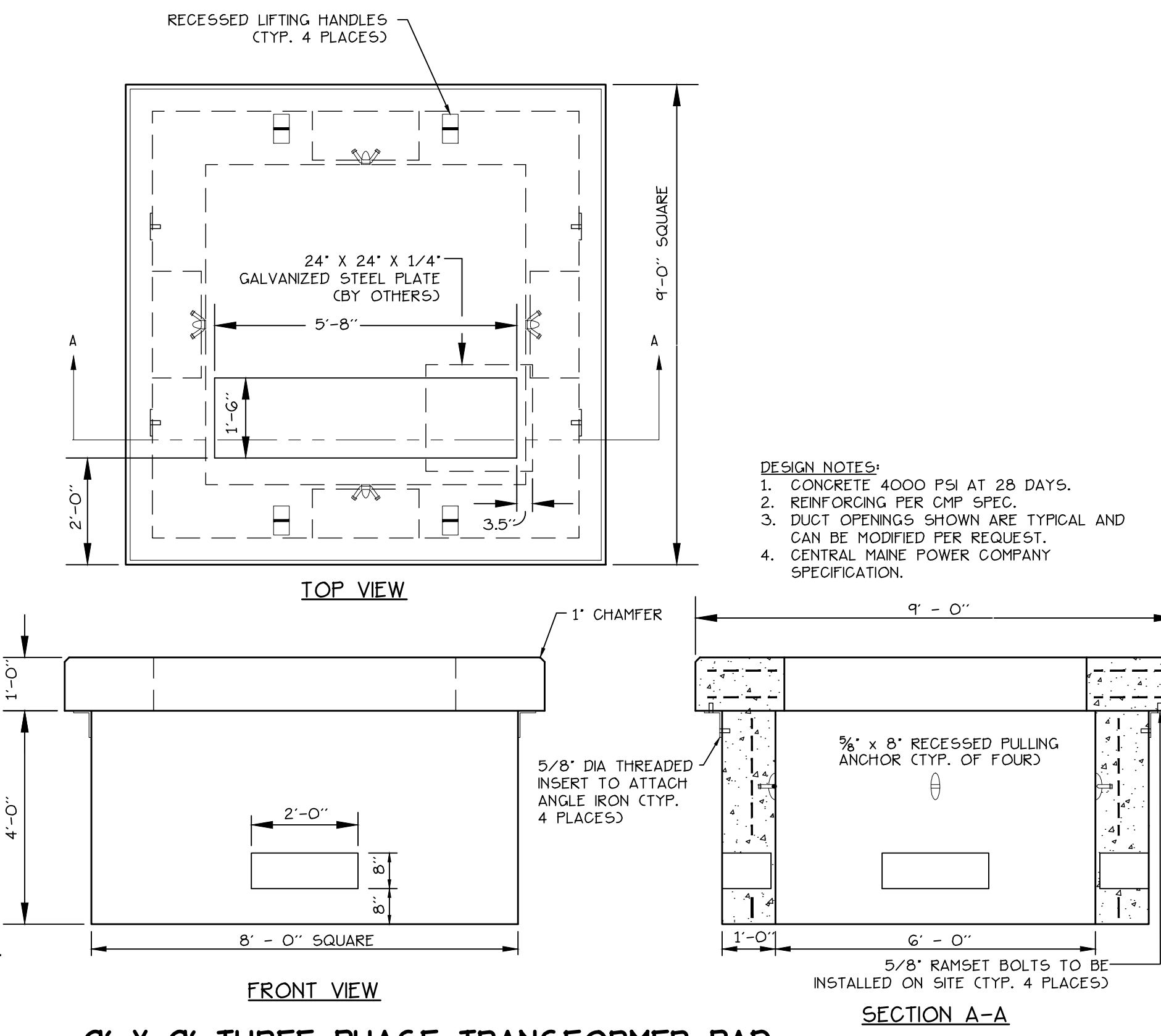
3 WATER MAIN ANCORAGE DETAILS

NOT TO SCALE



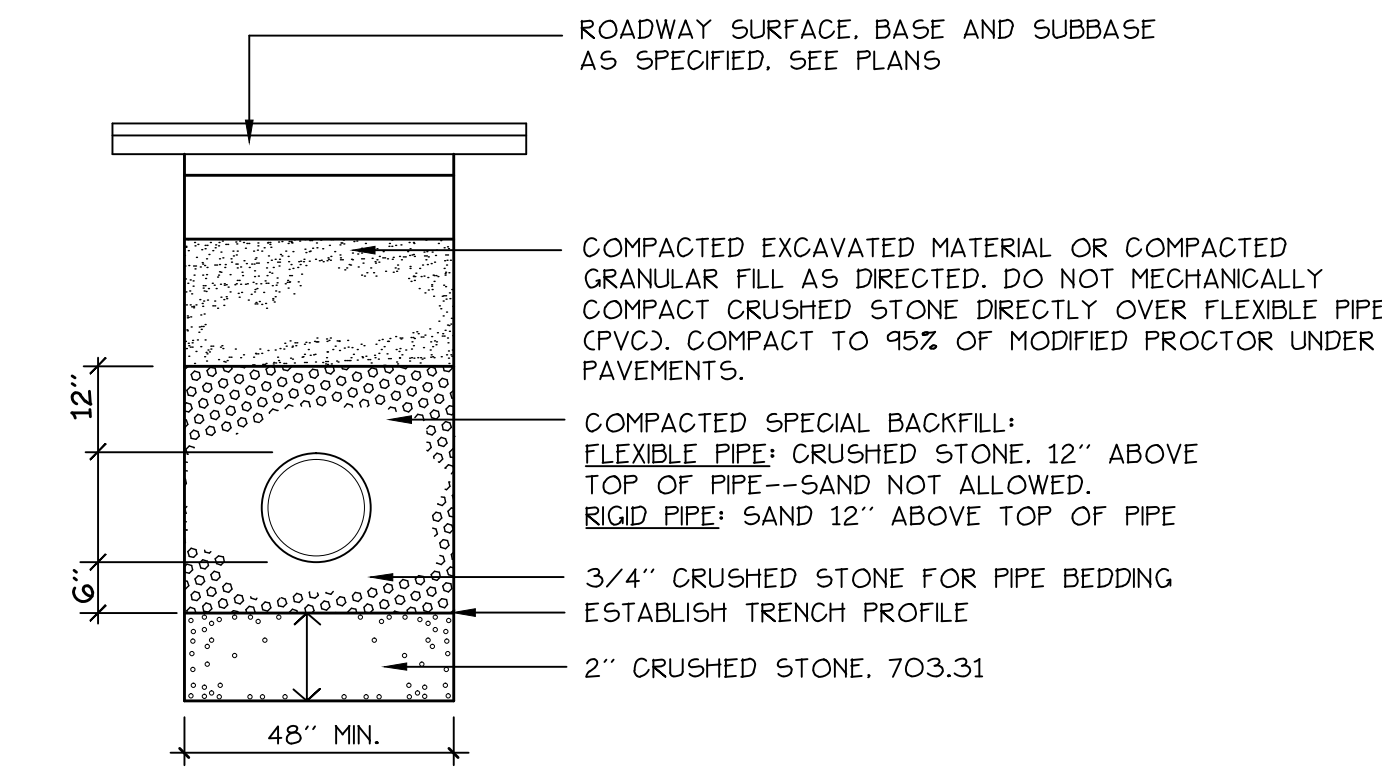
4 TELEPHONE / CABLE T.V.

NOT TO SCALE



6 9' X 9' THREE PHASE TRANSFORMER PAD (750 - 2000 KVA)

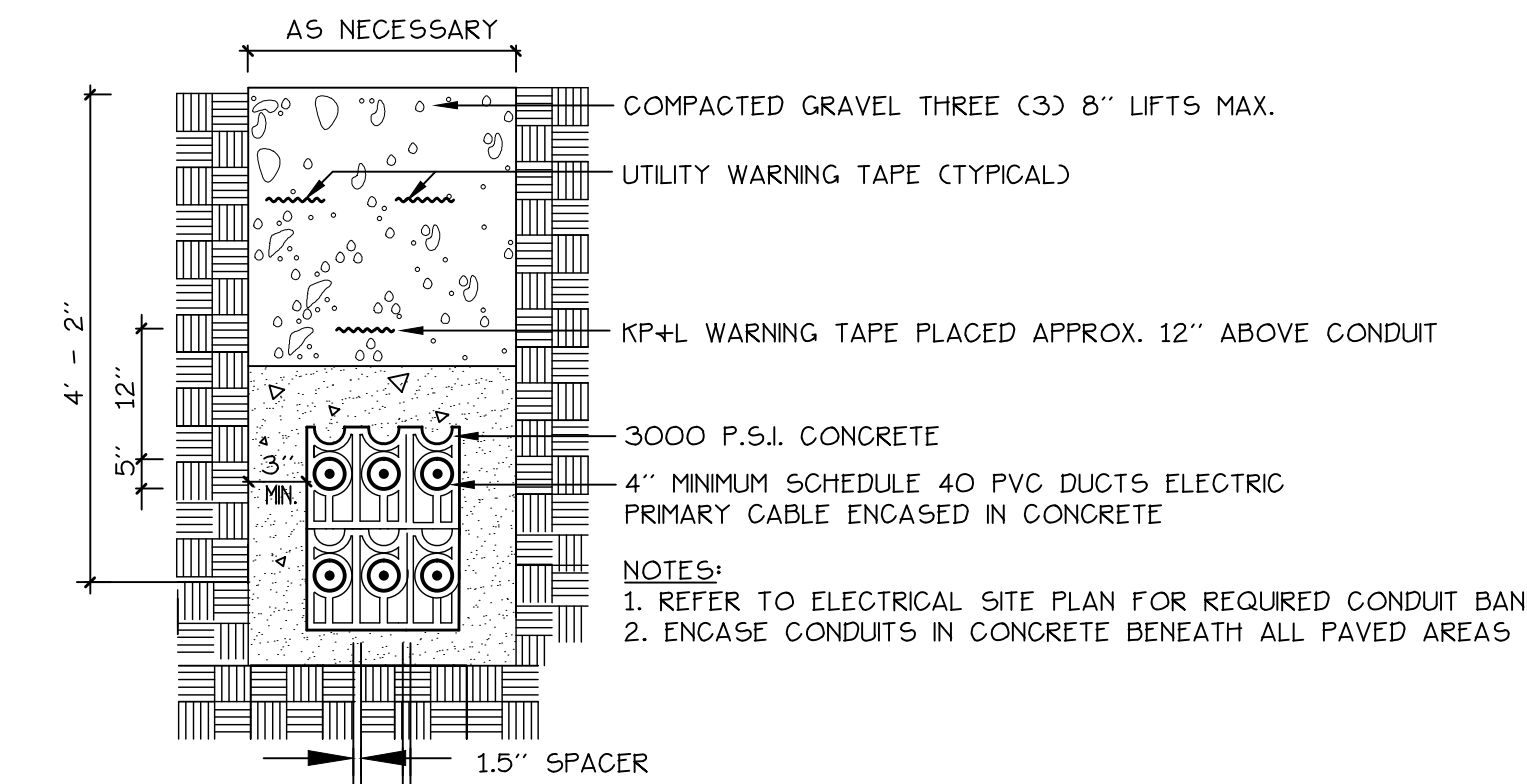
NOT TO SCALE



- NOTES:
- ANY ALTERNATE TRENCHING METHODS SHALL BE APPROVED IN ADVANCE BY THE CITY.
 - ALL TRENCH DIMENSIONS SHALL BE IN CONFORMANCE WITH THE CITY OF PORTLAND'S DETAIL FIGURE I-12 OF THE TECHNICAL AND DESIGN STANDARDS AND GUIDELINES.

7 PIPE TRENCH DETAIL

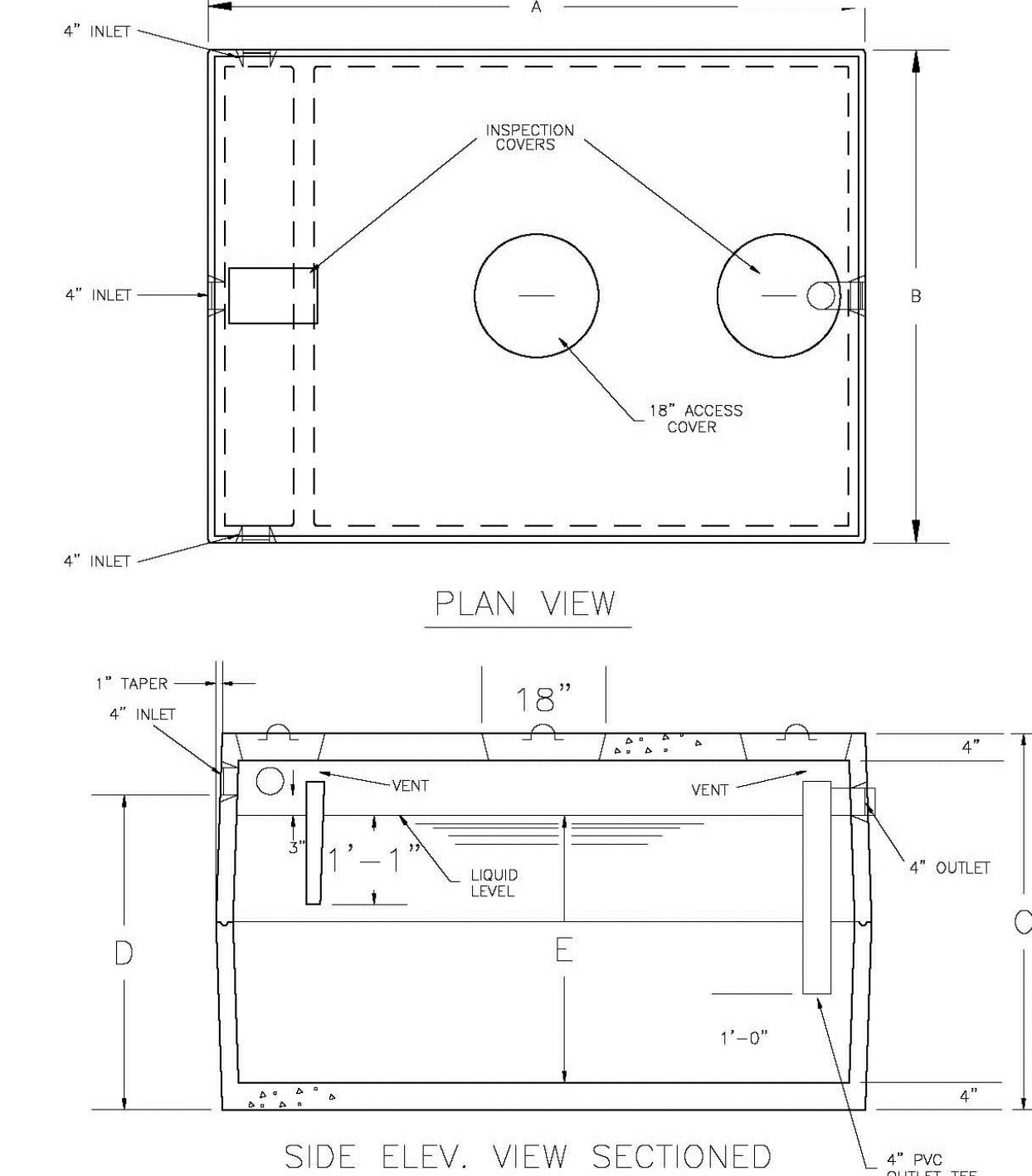
NOT TO SCALE



8 ELECTRIC TRENCH

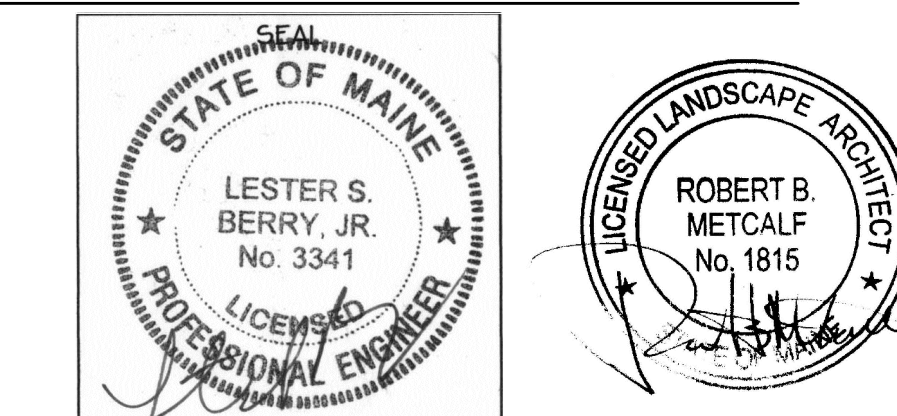
NOT TO SCALE

ITEM NO.	STD.	H.D.	GALLON CAPACITY	DESIGN DATA & GENERAL NOTES					
				A	B	C	D	E	
1	GT	2000	2,000	10'-6"	6'-4"	6'-2"	5'-3"	4'-8"	APPROX. WEIGHT 12,140 LBS.
2	GT	2000-HD	2,000	10'-6"	6'-4"	6'-2"	5'-3"	4'-8"	CONCRETE: 4,000 PSI @ 28 DAYS. CEMENT: PORTLAND TYPE I OR III PER ASTM C150.
3									REINFORCING: FIBERS.
4									DESIGN LOADING: H-10
5									CONSTRUCTION JOINT: SEALED W/ ASPHALT
6									HEAVY-DUTY TANK TOPS REINFORCED W/ 5/8" ROD @ 12" O.C. EACH WAY.



9 REPLACEMENT 2000 GALLON GREASE TRAP

NOT TO SCALE



Prepared For:
 Owner:
 Home For The Aged
 777 Stevens Avenue
 Portland, Maine 04103
 Tel.: 207-797-7710
 Applicant:
 The Park Danforth
 777 Stevens Avenue
 Portland, Maine 04103
 Tel.: 207-797-7710
 Prepared By:
 MITCHELL & ASSOCIATES
 Landscape Architects
 The Staples School
 70 Center Street
 Portland, Maine 04101
 Tel.: 207-774-4427

The Park Danforth
 Portland, Maine
 777 Stevens Avenue

Date:
 OCTOBER 17, 2014
 Issued For:
 PERMITTING
 Revisions:
 NOV. 25, 2014: Per City of Portland Staff Review Comments
 JAN. 5, 2015: Per City of Portland Staff Review Comments
 APR. 10, 2015: Amended Site Plan and Subdivision Plan

Reproduction or reuse of this document without the expressed written consent of Mitchell & Associates is prohibited.
 © 2015
 Title:
 SITE DETAILS
 Scale: AS SHOWN
 North:
 Sheet No.:
L6.3