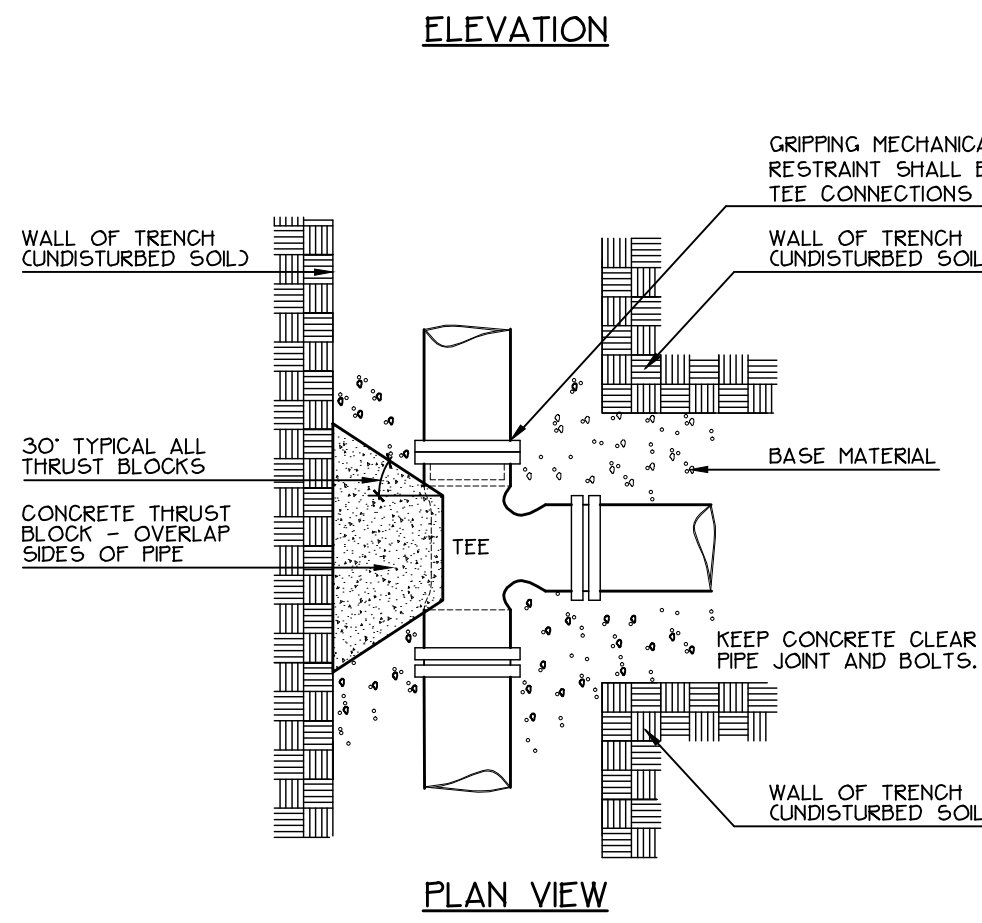
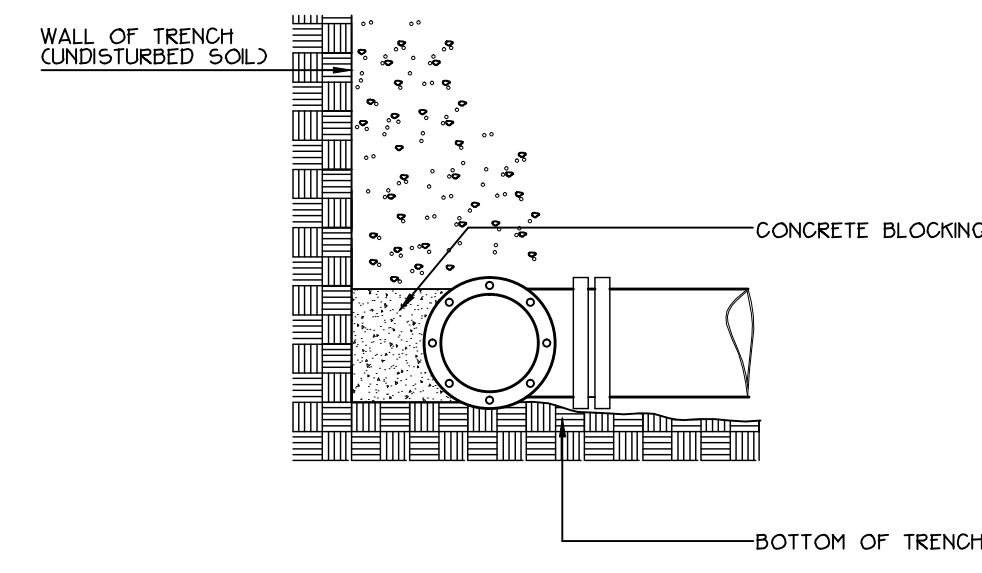


**1 PORTLAND WATER DISTRICT PIPE TRENCH DETAIL**

1/6.3 NOT TO SCALE

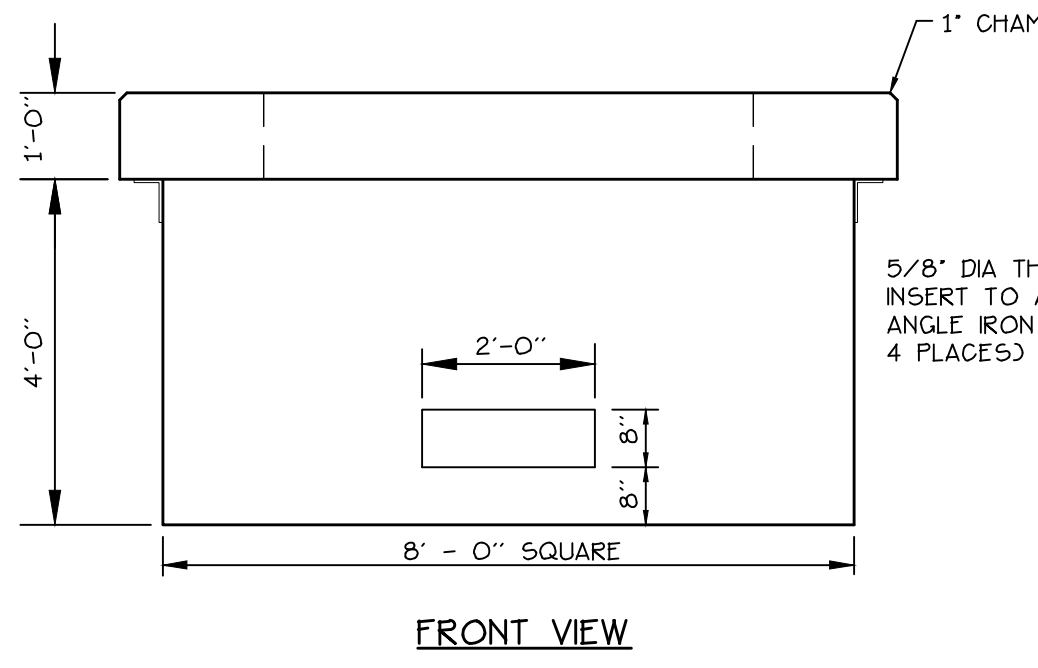
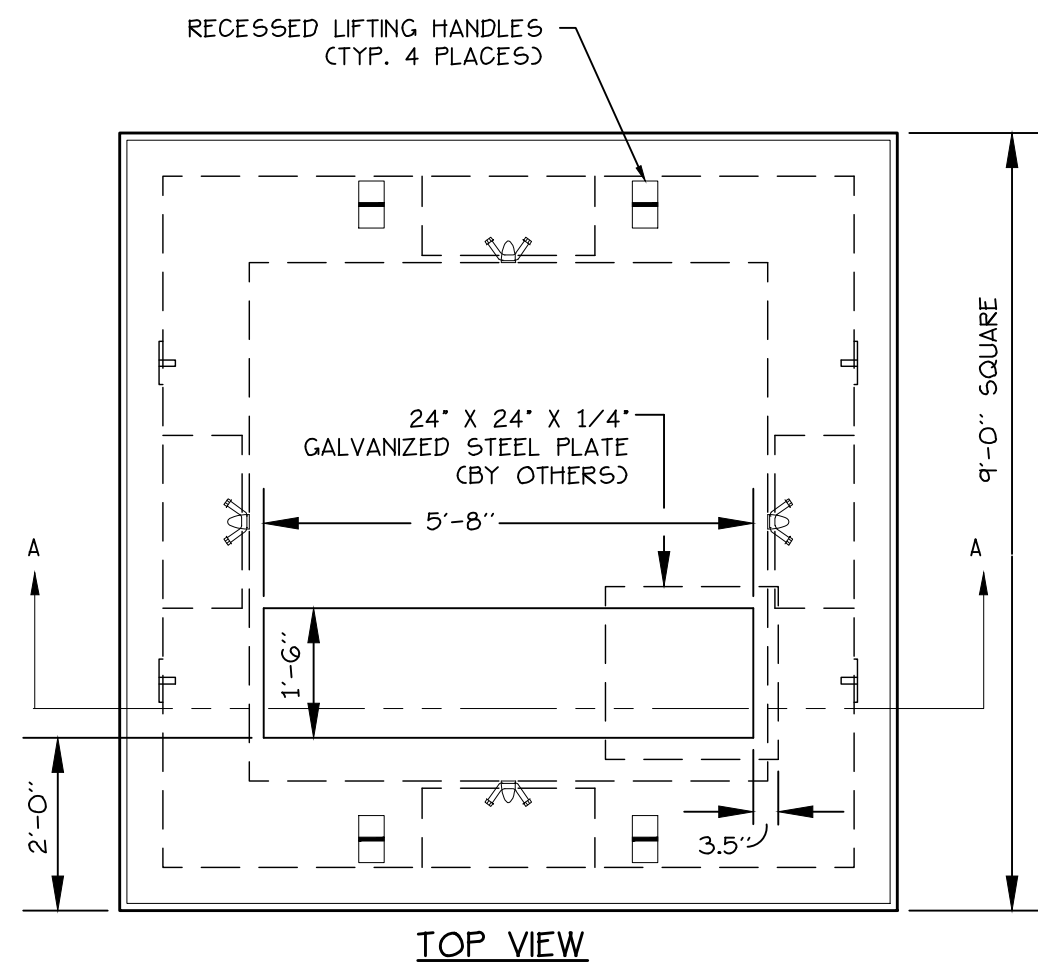


1. INSTALL POLY BARRIER BETWEEN PIPE AND ALL THRUST BLOCKS.
2. ANY MODIFICATION TO THRUST BLOCK SIZING OR PIPE RESTRAINT REVISIONS SHALL BE APPROVED IN WRITING BY THE LANDSCAPE ARCHITECT PRIOR TO IMPLEMENTATION IN THE FIELD.
3. ANY WORK RELATING TO WATER PIPING OF DETAILS SHALL BE IN ACCORDANCE WITH THE PORTLAND WATER DISTRICT SPECIFICATIONS.

BEARING SURFACE REQUIRED IN SQUARE FEET					
PIPE SIZE	1/32 BEND	1/16 BEND	1/8 BEND	1/4 BEND	TEES/CAPS
6"	1.0	1.5	2.5	4.5	3.5
8"	1.5	2.5	4.5	8.0	5.5

**5 STANDARD TEE BLOCKING**

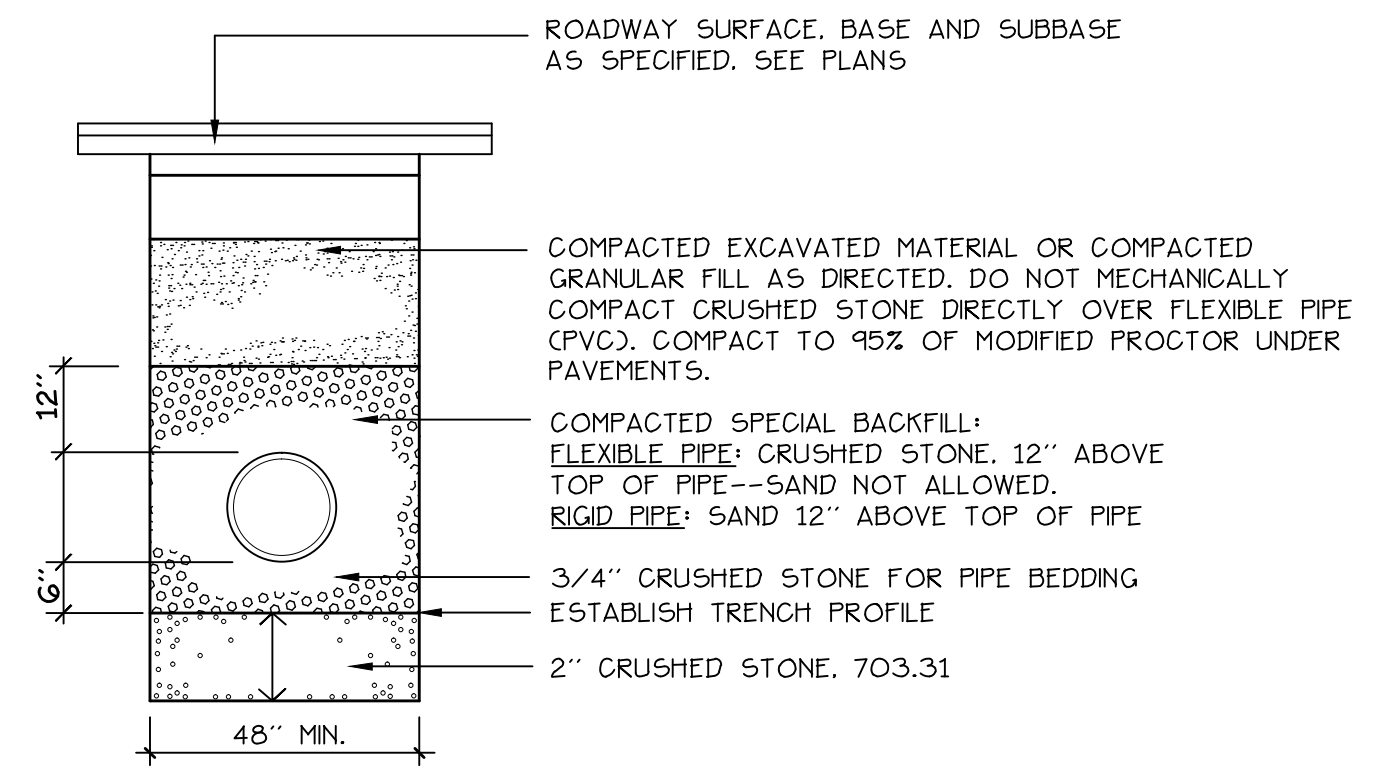
1/6.3 NOT TO SCALE



- DESIGN NOTES:**
1. CONCRETE 4000 PSI AT 28 DAYS.
  2. REINFORCING PER CMP SPEC.
  3. DUCT OPENINGS SHOWN ARE TYPICAL AND CAN BE MODIFIED PER REQUEST.
  4. CENTRAL MAINE POWER COMPANY SPECIFICATION.

**6 9' X 9' THREE PHASE TRANSFORMER PAD (750 - 2000 KVA)**

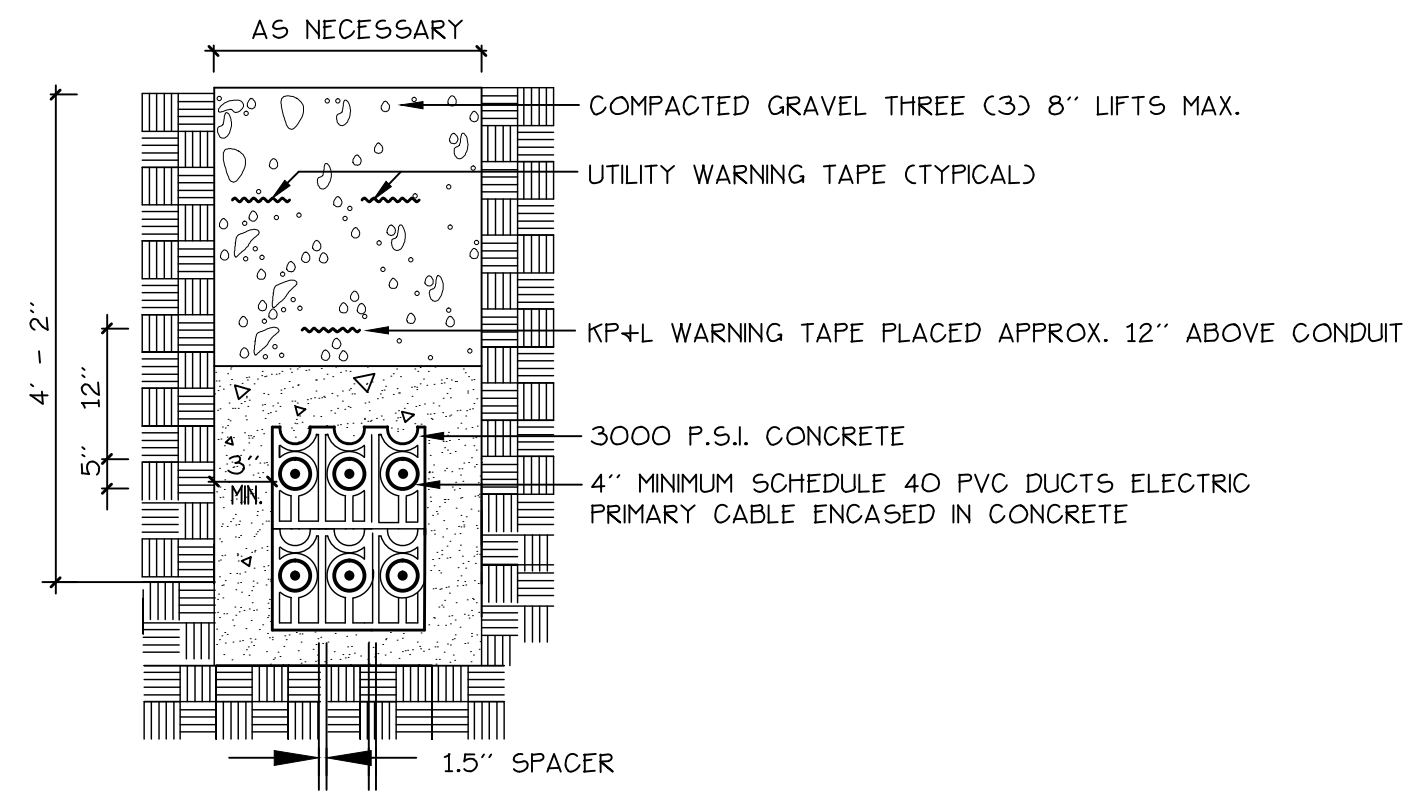
1/6.3 NOT TO SCALE



- NOTES:**
1. ANY ALTERNATE TRENCHING METHODS SHALL BE APPROVED IN ADVANCE BY THE CITY.
  2. ALL TRENCH DIMENSIONS SHALL BE IN CONFORMANCE WITH THE CITY OF PORTLAND'S DETAIL FIGURE I-12 OF THE TECHNICAL AND DESIGN STANDARDS AND GUIDELINES.

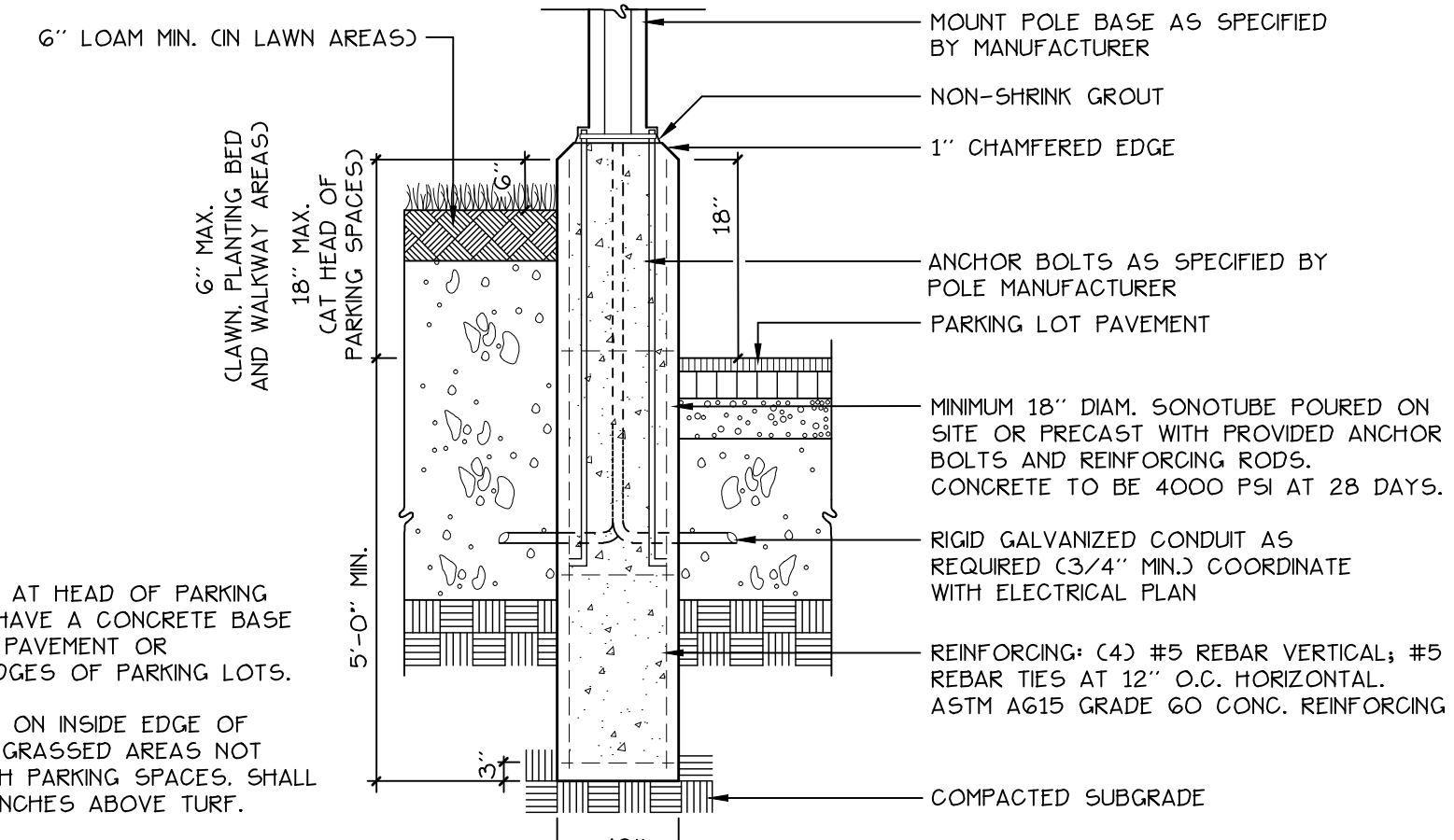
**7 PIPE TRENCH DETAIL**

1/6.3 NOT TO SCALE



**8 ELECTRIC TRENCH**

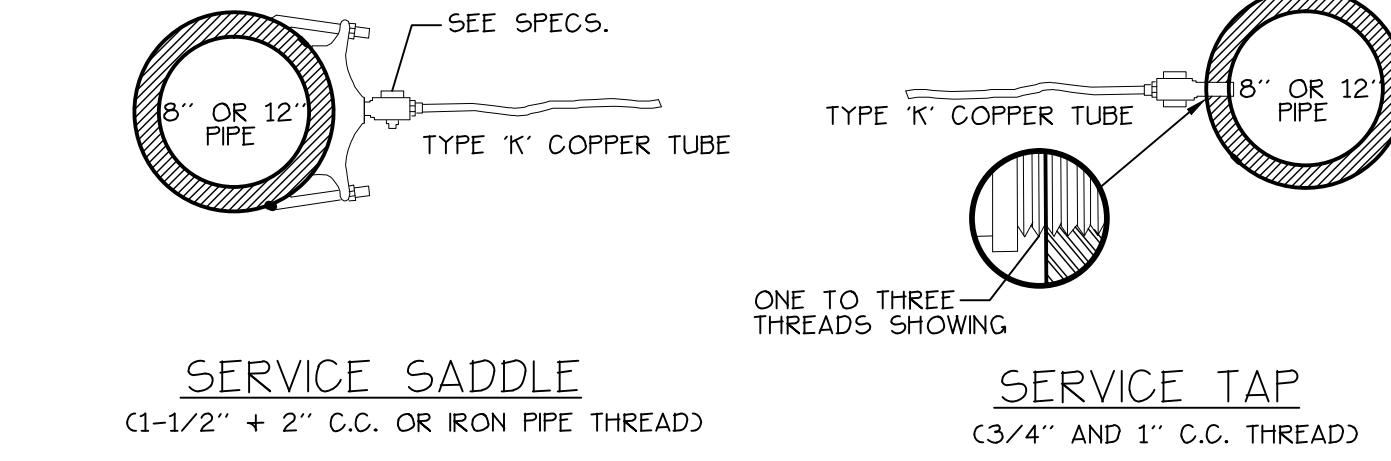
1/6.3 NOT TO SCALE



- NOTES:**
1. POLES MOUNTED AT HEAD OF PARKING SPACES SHALL HAVE A CONCRETE BASE SET 18" ABOVE PAVEMENT OR UNPROTECTED EDGES OF PARKING LOTS.
  2. POLES MOUNTED ON INSIDE EDGE OF SIDEWALKS AND GRASSED AREAS NOT ASSOCIATED WITH PARKING SPACES, SHALL BE MOUNTED 6 INCHES ABOVE TURF.

**9 CONCRETE LIGHT POLE BASE**

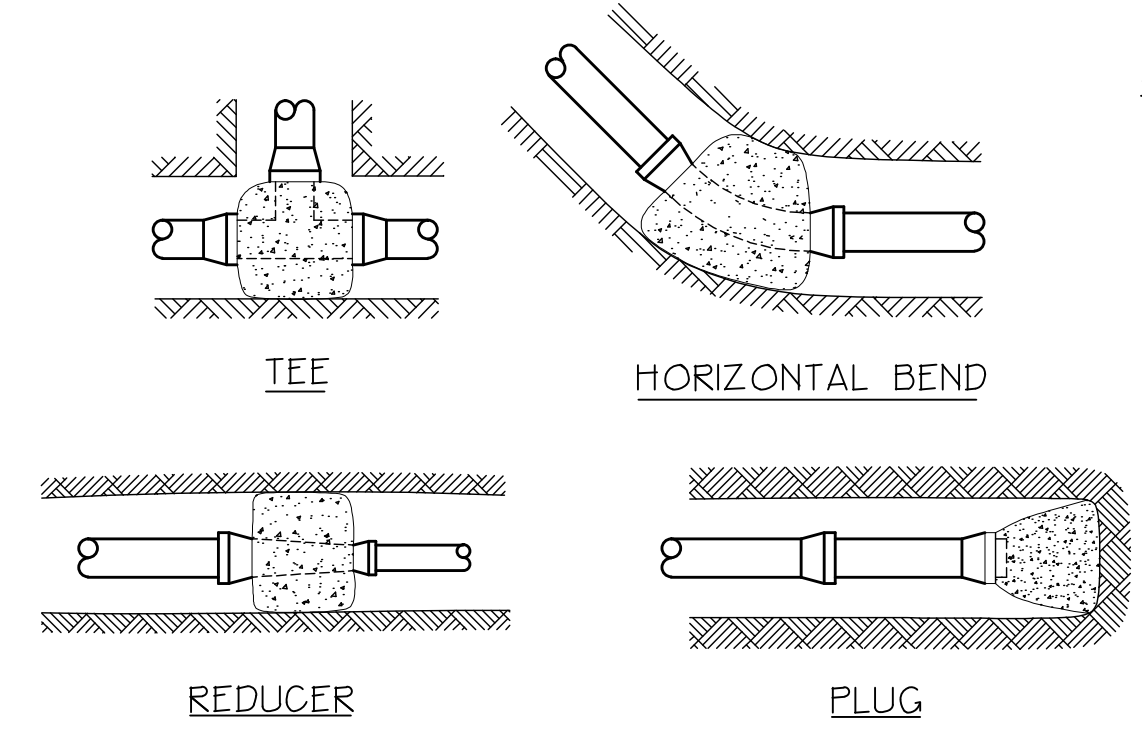
1/6.3 NOT TO SCALE



**NOTE:** SERVICE CONNECTIONS (DIRECT TAPS AND SERVICE CLAMPS) WILL BE INSTALLED SO THAT THE OUTLET IS AT AN ANGLE OF NOT MORE THAN 45° ABOVE THE HORIZONTAL. ALWAYS PUT A BEND OR 'GOOSENECK' IN THE SERVICE LINE PRIOR TO CONNECTING TO PROVIDE FLEXIBILITY AND 'GIVE' TO COUNTERACT THE EFFECTS OF A LOAD DUE TO SETTLEMENT OR EXPANSION AND/OR CONTRACTION (SEE DETAILS).

**2 WATER MAIN SERVICE CONNECTIONS**

1/6.3 NOT TO SCALE

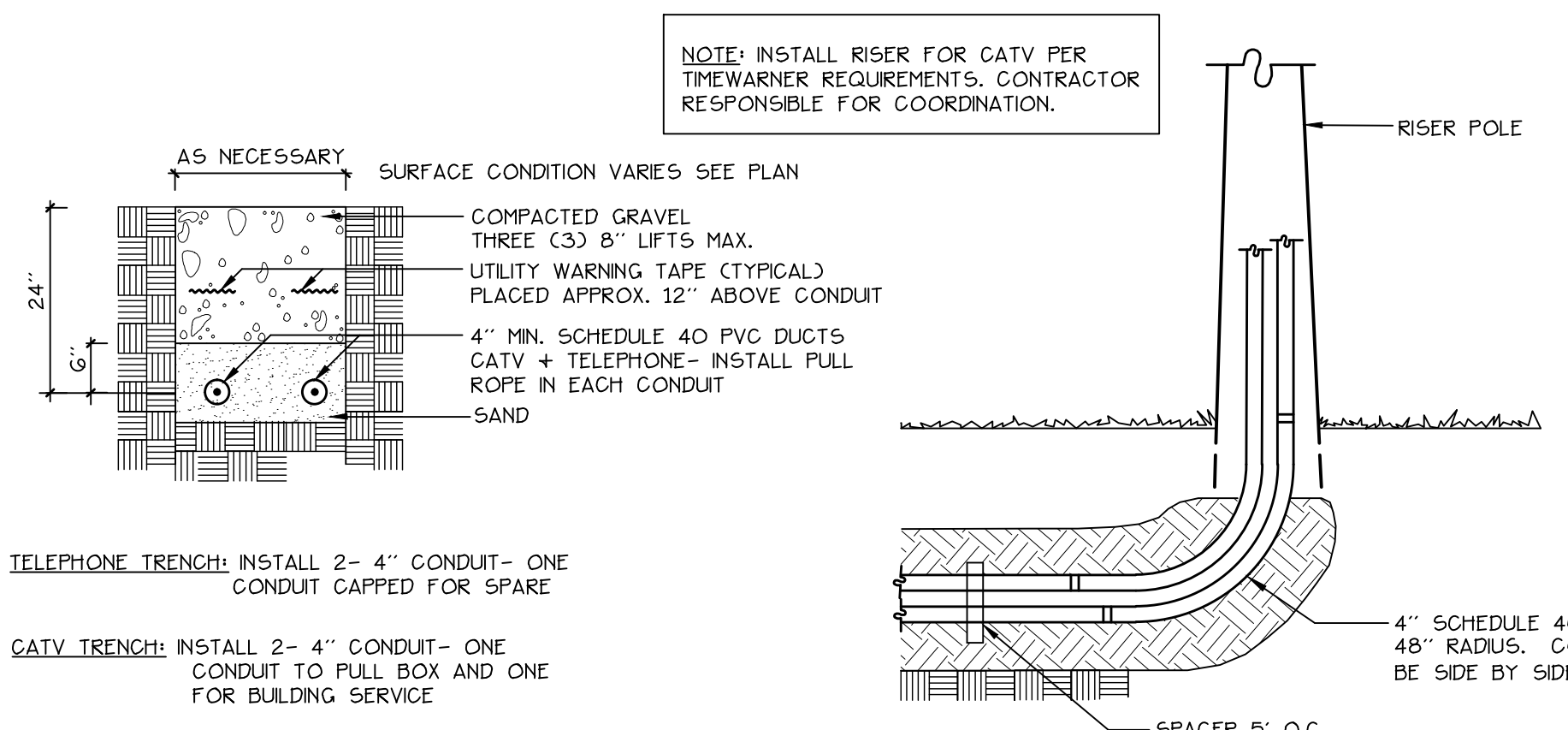


PIPE SIZE (IN)	TEE	90	45	22	1/2	11	1/4
2	1.0	1.0	1.0	1.0			
3	1.0	1.0	1.0	1.0			
4	1.2	1.0	1.0	1.0			
6	2.6	1.4	1.0	1.0			
8	4.6	2.5	1.4	1.0			
10	7.2	3.9	2.0	1.0			
12	10.4	5.6	2.8	1.5			
14	14.2	7.7	3.9	2.0			
16	18.5	10.0	5.0	2.5			
18	23.4	12.7	6.4	3.3			

ANCHOR ALL 1/16, 1/8 + 1/4 BENDS. ANCHOR ALL TEES W/ BRANCH LARGER THAN 6". PLACE CONCRETE AGAINST UNDISTURBED EARTH OR COMPACTED FILL.

**3 WATER MAIN ANCORAGE DETAILS**

1/6.3 NOT TO SCALE



**NOTE:** INSTALL RISER FOR CATV PER TIMEWARNER REQUIREMENTS. CONTRACTOR RESPONSIBLE FOR COORDINATION.

**4 TELEPHONE / CABLE T.V.**

1/6.3 NOT TO SCALE

Prepared For:  
 Owner:  
 Home For The Aged  
 777 Stevens Avenue  
 Portland, Maine 04103  
 Tel.: 207-797-7710  
 Applicant:  
 The Park Danforth  
 777 Stevens Avenue  
 Portland, Maine 04103  
 Tel.: 207-797-7710  
 Prepared By:  
 MITCHELL & ASSOCIATES  
 Landscape Architects  
 The Staples School  
 70 Center Street  
 Portland, Maine 04101  
 Tel.: 207-774-4427

The Park Danforth  
 Portland, Maine  
 777 Stevens Avenue

Date:  
OCTOBER 17, 2014

Issued For:  
PERMITTING

Revisions:  
NOV. 25, 2014: Per City of Portland Staff Review Comments

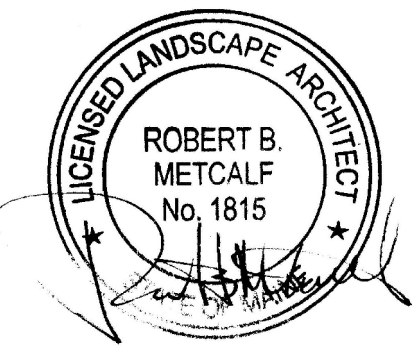
Reproduction or reuse of this document without the expressed written consent of Mitchell & Associates is prohibited.  
© 2014

Title:  
SITE DETAILS

Scale: AS SHOWN

North: Sheet No.:

**L6.3**



P:\Projects\Drawings\2014\Drawings - 1884-281-11-13 DETAILS.dwg msh 1/25/2014 2:28 PM