

PLANT LIST

KEY	QTY	BOTANICAL NAME	COMMON NAME	SIZE
<b>TREES</b>				
A. FAR	5	ACER FREEMANI 'ARMSTRONG'	ARMSTRONG MAPLE	2.5" CAL
A. GRI	3	ACER GRISEUM	PAPERBARK MAPLE	2.5" CAL
C. JAP	3	CERCIDIPHYLLUM JAPONICUM	KATSURA TREE	2.5" CAL
C. KOU	7	CORNUS KOUSA	KOUSA DOGWOOD	2.5" CAL
C. KOW	1	CORNUS KOUSA 'WOLF EYES'	VARIEGATED KOUSA DOGWOOD	2" CAL
F. SYL	1	FAGUS SYLVATICA 'TRICOLOR'	TRICOLOR BEECH	2.5" CAL
M. ROR	12	MALUS 'ROYAL RAINDROPS'	ROYAL RAINDROPS FLOWERING CRAB	1.75" CAL
T. COR	7	TILIA CORDATA 'GREENSPIRE'	GREENSPIRE LINDEN	2.5" CAL
S. PSE	1	STEWARTIA PSEUDOCAMELLIA	JAPANESE STEWARTIA	#15
T. OCC	6	THUJA OCCIDENTALIS 'DOUGLASH'	DOUGLAS ARBORVITAE	4-5' HT.
T. OGG	8	THUJA OCCIDENTALIS 'GOLDEN GLOBE'	GLOBE ARBORVITAE	#3
U. AVF	6	ULMUS AMERICANA 'VALLEY FORGE'	VALLEY FORGE ELM	2.5" CAL
<b>SHRUBS</b>				
A. FIR	11	AZALEA 'FIRESTAR'	EVERGREEN FIRESTAR AZALEA	#3
C. ALN	6	CLETHRA ALNIFOLIA 'SIXTEEN CANDLES'	SIXTEEN CANDLES SUMMERSWEET	#3
D. BUR	9	DAPHNE BURKWOODI 'CAROL MACKIE'	CAROL MACKIE DAPHNE	#3
F. GAR	6	FOTHERGILLA GARDENII	DWARF BOTTLEBRUSH	#3
H. MAC	28	HYDRANGEA MACROPHYLLA 'ENDLESS SUMMER'	ENDLESS SUMMER HYDRANGEA	#3
H. PAN	1	HYDRANGEA PANICULATA 'LITTLE QUICKFIRE'	QUICKFIRE HYDRANGEA	#3
J. COM	4	JUNIFER COMMUNIS 'REFANDA'	REFANDA JUNIPER	#3
J. VIR	6	JUNIFER VIRGINIANA 'GREY OWL'	GREY OWL JUNIPER	#3
M. DDB	15	MICROBIOTA DECUSSATA 'DREW'S BLUE'	DREW'S BLUE CARPET CYPRESS	#3
P. JAP	3	PIERIS JAPONICA 'MT FIRE'	MT FIRE ANDROMEDA	#3
R. KNO	12	ROSE 'KNOCK OUT'	KNOCK OUT ROSE	#3
R. BUB	7	RHODODENDRON 'BUBBLEGUM'	BUBBLEGUM RHODODENDRON	#3
R. OLM	24	RHODODENDRON 'OLGA MEZITT'	OLGA MEZITT RHODODENDRON	#3
S. FAT	6	SYRINGA PATULA 'MISS KIM'	MISS KIM LILAC	4-5' HT.

GENERAL PLANTING NOTES

- CALL DIG-SAFE (1-888-344-7233) PRIOR TO BEGINNING WORK. THE LANDSCAPE CONTRACTOR IS ADVISED OF THE PRESENCE OF UNDERGROUND UTILITIES AND SHALL VERIFY THE EXISTENCE AND LOCATION OF SAME BEFORE COMMENCING AND DIGGING OPERATIONS. THE LANDSCAPE CONTRACTOR SHALL REPLACE OR REPAIR UTILITIES PAVING, WALKS, CURBING, ETC. DAMAGED IN PERFORMANCE OF THIS JOB AT NO ADDITIONAL COST TO OWNER.
- CONTRACTOR SHALL THOROUGHLY FAMILIARIZE HIMSELF WITH ALL SITE CONDITIONS PRIOR TO CONSTRUCTION BIDDING.
- DO NOT SCALE FROM DRAWINGS. ANY OMISSIONS IN DIMENSIONING SHALL BE REPORTED IMMEDIATELY TO THE LANDSCAPE ARCHITECT. ANY DISCREPANCIES BETWEEN DRAWINGS, DETAILS, NOTES AND SPECS SHALL BE IMMEDIATELY REPORTED TO THE LANDSCAPE ARCHITECT FOR FURTHER DIRECTION AND RESOLUTION BEFORE ANY ADDITIONAL WORK PROCEEDS.
- PROVIDE SMOOTH TRANSITION WHERE NEW WORK MEETS EXISTING CONDITIONS.
- CONTRACTOR SHALL FURNISH AND PLACE 12 INCHES OF LOAM IN ALL SHRUB BEDS, 30 INCHES IN ALL TREE PITS, AND 6 INCHES UNDER ALL TURF AREAS. THE LANDSCAPE CONTRACTOR SHALL COORDINATE SUBGRADE PREPARATION WITH THE GENERAL CONTRACTOR PRIOR TO PLACING LOAM.
- ALL PLANT MATERIAL INSTALLED SHALL MEET THE SPECIFICATIONS OF "AMERICAN STANDARDS FOR NURSERY STOCK BY THE AMERICAN ASSOCIATION OF NURSERYMEN" LATEST EDITION.
- ALL PLANT MATERIAL SHALL BE FREE FROM INSECTS AND DISEASE.
- ALL PLANTING SHALL BE DONE IN ACCORDANCE WITH ACCEPTABLE HORTICULTURAL PRACTICES. THIS IS TO INCLUDE PROPER PLANTING MIX, PLANT BED AND TREE PIT PREPARATION, PRUNING, STAKING OR GUYING, WRAPPING, SPRAYING, FERTILIZATION, PLANTING AND ADEQUATE MAINTENANCE UNTIL ACCEPTANCE FROM THE OWNER.
- ALL GRASS, OTHER VEGETATION AND DEBRIS SHALL BE REMOVED FROM ALL PLANTING AREAS PRIOR TO PLANTING.
- EXISTING TREES TO BE PRESERVED SHALL BE PROTECTED DURING CONSTRUCTION AND SHALL BE THE RESPONSIBILITY OF THE GENERAL CONTRACTOR.
- ALL SHRUB BEDS AND TREE PITS SHALL BE MULCHED WITH 3" CLEAN SHREDDED BLACK MULCH (DO NOT EXCEED 3" DEPTH).
- ANY DEVIATION FROM THE LANDSCAPE PLAN, INCLUDING PLANT LOCATION, SELECTION, SIZE, QUANTITY, OR CONDITION SHALL BE REVIEWED AND APPROVED BY THE OWNER AND LANDSCAPE ARCHITECT (AND MUNICIPAL AUTHORITY, IF APPLICABLE) PRIOR TO INSTALLATION ON SITE.
- WHERE INDICATED ON PLAN, PLANTING SOIL MIXTURE FOR GROUND COVER AND PERENNIAL BED AREAS SHALL CONSIST OF FOUR PARTS TOPSOIL, TWO PARTS SPHAGNUM PEAT MOSS, AND ONE PART HORTICULTURAL PERLITE BY VOLUME. PEAT MOSS MAY BE SUBSTITUTED WITH WELL-ROTTED OR DEHYDRATED MANURE OR COMPOST. ROTOTILL BEDS TO A DEPTH OF 8 INCHES.
- DAMAGE TO EXISTING SITE IMPROVEMENTS DURING INSTALLATION OF LANDSCAPE MATERIAL SHALL BE THE RESPONSIBILITY OF THE LANDSCAPE CONTRACTOR.

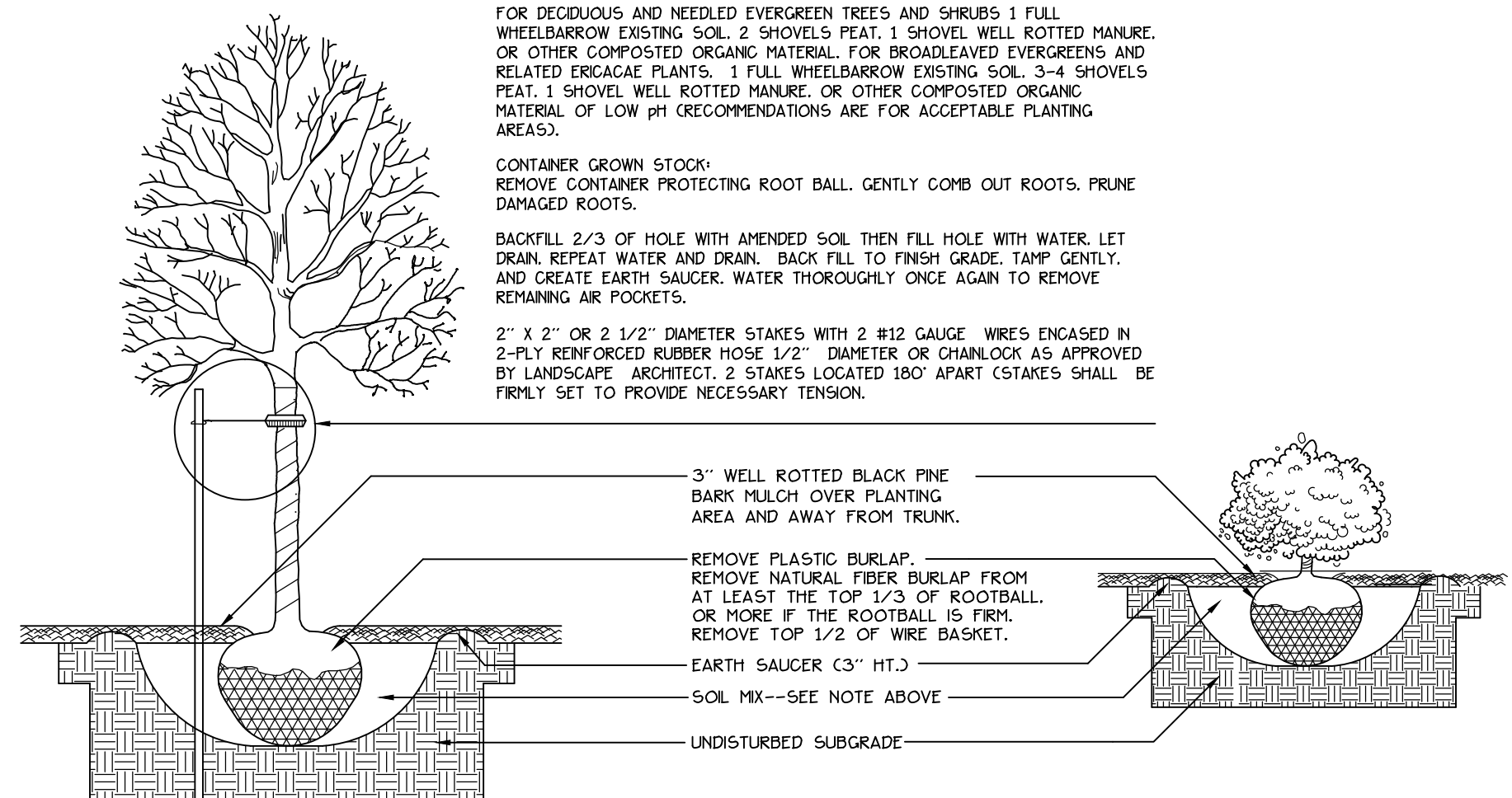
NOTES:  
 DIG HOLE AT LEAST 2 TIMES THE WIDTH OF ROOT BALL AND AS DEEP AS THE ROOT BALL (NO DEEPER). SET ROOT BALL CENTERED, WITH TOP AT GROUND LEVEL OR SLIGHTLY HIGHER, CORRECT HOLE DEPTH AS NEEDED.

FOR DECIDUOUS AND NEEDLED EVERGREEN TREES AND SHRUBS 1 FULL WHEELBARROW EXISTING SOIL, 2 SHOVELS PEAT, 1 SHOVEL WELL ROTTED MANURE, OR OTHER COMPOSTED ORGANIC MATERIAL FOR BROADLEAVED EVERGREENS AND RELATED ERICACEAE PLANTS, 1 FULL WHEELBARROW EXISTING SOIL, 3-4 SHOVELS PEAT, 1 SHOVEL WELL ROTTED MANURE, OR OTHER COMPOSTED ORGANIC MATERIAL OF LOW pH (RECOMMENDATIONS ARE FOR ACCEPTABLE PLANTING AREAS).

CONTAINER GROWN STOCK:  
 REMOVE CONTAINER PROTECTING ROOT BALL, GENTLY COMB OUT ROOTS, PRUNE DAMAGED ROOTS.

BACKFILL 2/3 OF HOLE WITH AMENDED SOIL, THEN FILL HOLE WITH WATER, LET DRAIN, REPEAT WATER AND DRAIN, BACK FILL TO FINISH GRADE, TAMP GENTLY, AND CREATE EARTH SAUCER, WATER THOROUGHLY ONCE AGAIN TO REMOVE REMAINING AIR POCKETS.

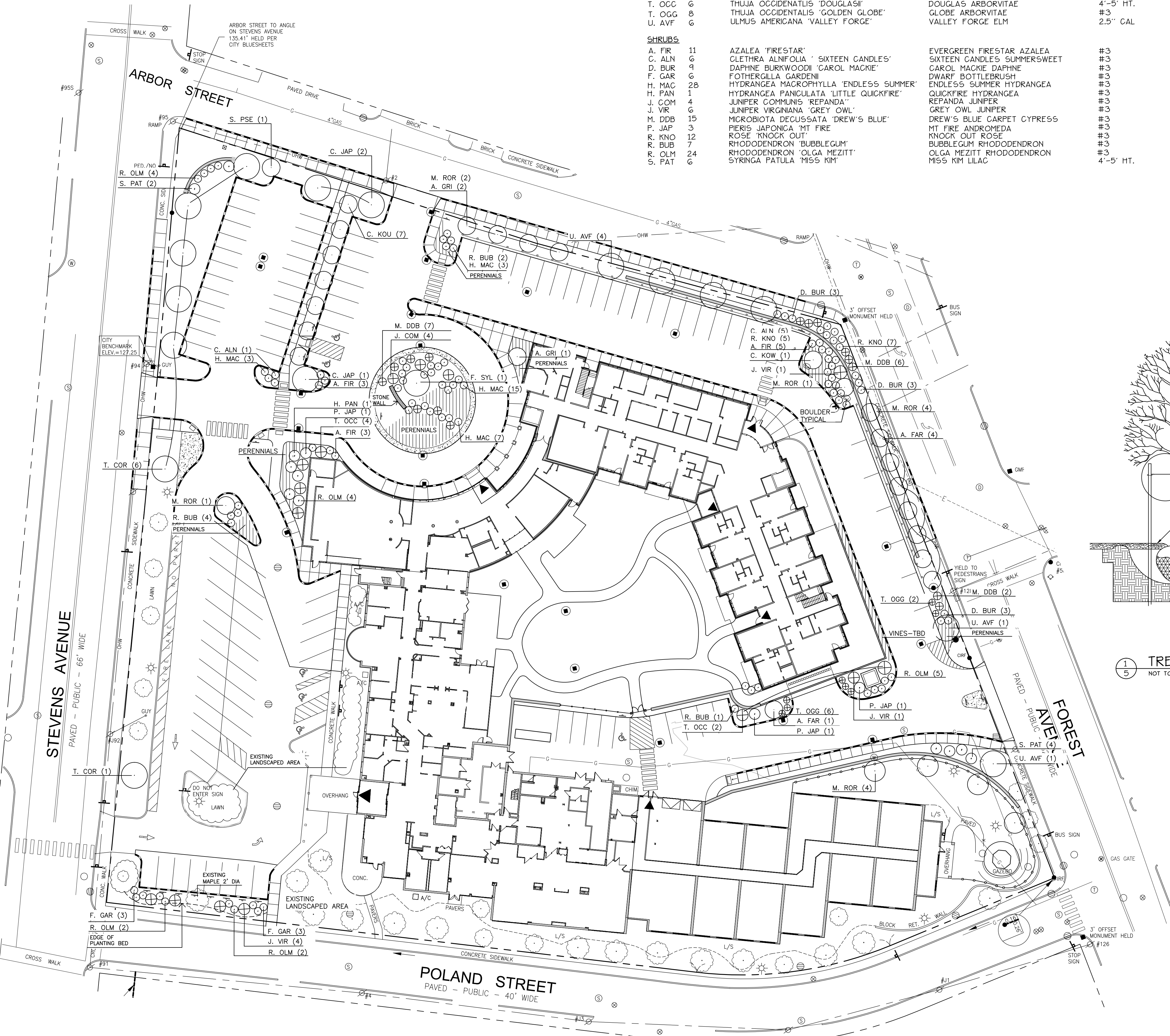
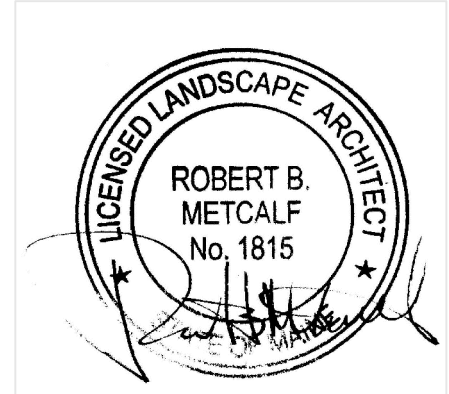
2" x 2" OR 2 1/2" DIAMETER STAKES WITH 2 #12 GAUGE WIRES ENGAGED IN 2-PLY REINFORCED RUBBER HOSE 1/2" DIAMETER OR CHAINLOCK AS APPROVED BY LANDSCAPE ARCHITECT, 2 STAKES LOCATED 180° APART (STAKES SHALL BE FIRMLY SET TO PROVIDE NECESSARY TENSION).



1 5 TREE AND SHRUB INSTALLATION NOT TO SCALE

LEGEND

	EXISTING	PROPOSED
PROPERTY LINE		
GRANITE MONUMENT		
CATCHBASIN		
MANHOLE		
HYDRANT		
UTILITY POLE		
WATER VALVE		
TELEPHONE		
OVERHEAD WIRES		
CHP CABLE LINES		
CLEAN OUT		
CURB		
FENCE		
SIGN		
DECIDUOUS TREE		
EVERGREEN TREE		



Prepared For:  
 Owner:  
 Home For The Aged  
 777 Stevens Avenue  
 Portland, Maine 04103  
 Tel.: 207-797-7710

Applicant:  
 The Park Danforth  
 777 Stevens Avenue  
 Portland, Maine 04103  
 Tel.: 207-797-7710

Prepared By:  
 MITCHELL & ASSOCIATES  
 Landscape Architects  
 The Staples School  
 70 Center Street  
 Portland, Maine 04101  
 Tel.: 207-774-4427

The Park Danforth  
 Portland, Maine  
 777 Stevens Avenue

Date:  
 OCTOBER 17, 2014

Issued For:  
 PERMITTING

Revisions:

Reproduction or reuse of this document without the expressed written consent of Mitchell & Associates is prohibited. © 2014

Title:  
 PLANTING PLAN

Scale: 1"=30'

North:

Sheet No.:  
**L5.0**