

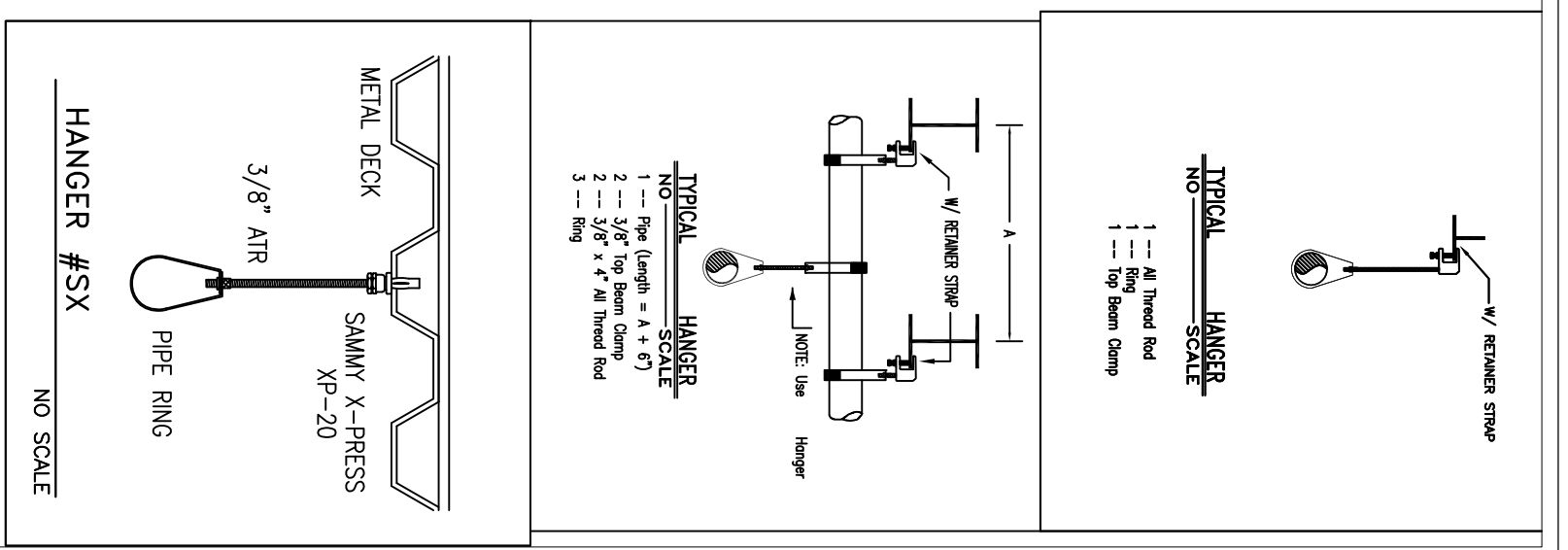


5TH FLOOR PLAN
1/8" = 1'-0"

ROOF FRAMING PLAN
1/8" = 1'-0"

NOTES:
1. 3X18 INDOOR SPAN DIRECTION OF 3X18 GALV ROOF DECK (3 SPAN MIN.)
2. 1.6890 TOP OF STEEL EL. 881'11.58" U.N.O. BY (3X-X7)
3. 1.6890 GALV ROOF DECK (3 SPAN MIN.)
TOS = 104.6 (UOM)

HYDRAULIC NOTE
SYSTEM HEIGHT
THIS SYSTEM IS HYDRAULICALLY EQUIVALENT TO LIGHT MEDIUM RESIDENTIAL.
- ROOF AREA = 1100 SQ. FT.
- AT 805 FT. HEIGHTS = 100 PSF
- 2007 DSM
- 1.58 SQ. FT./NO.
- 1.27 PSI SAFETY MARGIN EXISTS AT INCL.
- K=3.6
- K=3.6
11 HOURS
OCCUPANCY



PLANS PREPARED BY:
BRIAN BENDON
NICET LEVEL 3 CERT #0758334

THESE PLANS ARE SUBJECT TO MINOR DEVIATIONS, DUE TO CORRECTION AND/OR FIELD CONDITIONS, NOT AFFECTING SCOPE OF WORK OR CODE COMPLIANCE.

SCALE 1/8"=1'-0"

WATER SUPPLY DATA

Static pressure	62	psi
Residual pressure	40	psi
Location	See Site Plan	gpm
Elevation	1025.14	Time 11:00 AM
Date	10-25-14	Time 11:00 AM
Information by:	Portland Water Dept.	

SPRINKLERS

From This Sheet	148	From This Job	See Sheet 1
Symbol	REGULATED SPRINKLER WITH GLASS GLOBE (RA142)	Description	REGULATED SPRINKLER WITH GLASS GLOBE (RA142)
48	REGULATED SPRINKLER WITH GLASS GLOBE (RA144)		REGULATED SPRINKLER WITH GLASS GLOBE (RA144)
58	REGULATED SPRINKLER WITH GLASS GLOBE (RA150)		REGULATED SPRINKLER WITH GLASS GLOBE (RA150)

DRIVING

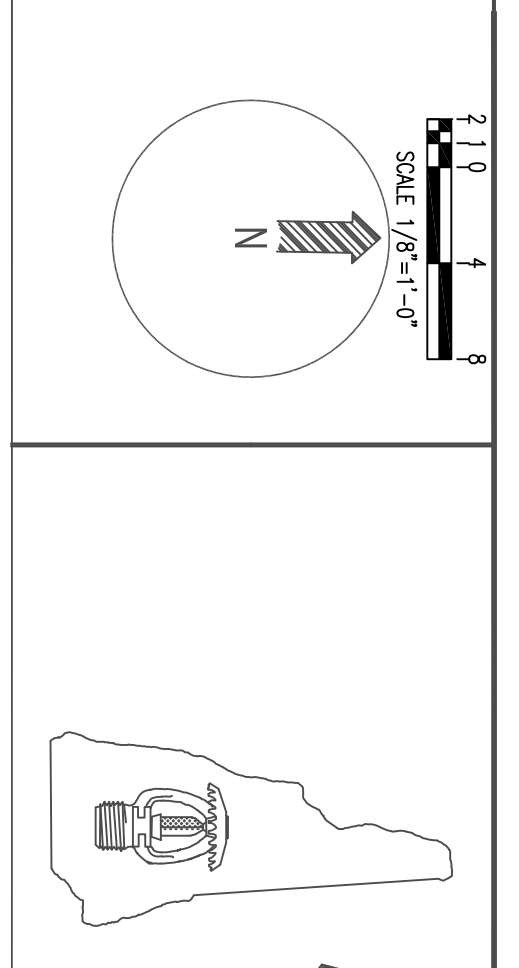
Sheet	9, Level 5
Contract No.	47373NH
Drawn By	Bendon
Scale	1/8" = 1'-0"
Date	2-12-16
Approved by	ME BENDON

Project:
The Park Danforth Expansion & Renovation
777 Stevens Ave.
Portland, ME 04103

Contractor:
PC Construction
788 Stevens Ave.
Portland, ME 04103

FIRE PROTECTION ENGINEER'S STAMP

FP 9 OF 11



Hampshire
FIRE PROTECTION
8 NORTH WENTWORTH AVENUE, LEONCONCENNY, NH 03025
PH: (603) 432-8221 FAX: (603) 434-3194
WEBSITE: HAMPSHIREFC.COM
MSS VERMONT CERTIFIED