



HYDRAULIC NOTE
 SYSTEM FRICTION CALCULATED TO
 LIGHT RATED ROOF SPRINKLER
 - RELIEF AREA = 500 SQ. FT. (ACE OR REDUCION)
 AT BOB F. REQUIREMENTS = 100 GPM
 - 150.0 GPM
 - 148.50 FT/HO
 - 3.30
 - 3.30
 8 HEADS
 CALCULATED

1ST FLOOR PLAN
 1/8" = 1'-0"

LEVEL 2 FRAMING PLAN
 1/8" = 1'-0"

- NOTES:**
 1/8" = 1'-0"
- INDICATES SPAN DIRECTION OF 5 1/2" NOMINAL WEIGHT CONC. SLAB ON CMU
 - REG. GALV. COMPOSITE DECK W/6x4 W/14 W/F. 4 W/W.F. (2 1/2" CONC. FILL OVER 3")
 - TOP OF STEEL EL. 139'-4 1/8" U.N.O. BY (A-X-X7)
 - T.O.S. = 11'-2 1/2" (U.N.O.)

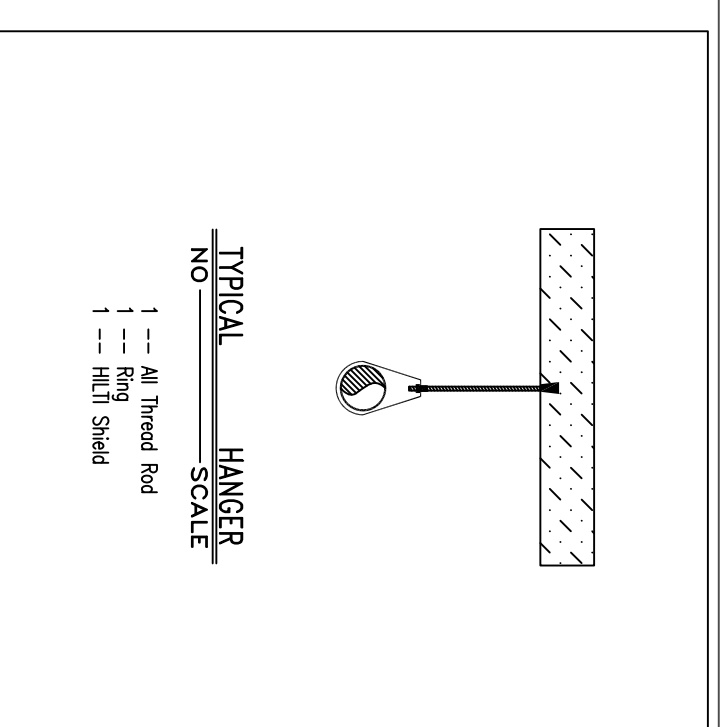
SEE THE EDGE OF SLAB
 FOLLOWING ANGLE TYPE
 THIS LEVEL, U.N.O.

PIPE SIZE TYPICAL TO 5TH FLOOR
 SEE SHEET 9

PLANS PREPARED BY:
 BRIAN BENOIT
 NICET LEVEL 3 CERT. #0759334

THESE PLANS ARE SUBJECT TO MINOR
 DEVIATIONS, DUE TO COORDINATION AND/OR
 FIELD CONDITIONS, NOT AFFECTING SCOPE OF
 WORK OR CODE COMPLIANCE.

SCALE 1/8" = 1'-0"



SCALE 1/8" = 1'-0"

Hampshire
 FIRE PROTECTION

8 NORTH WENTWORTH AVENUE LEONCONGERRI, NH 03253
 PH: (603) 432-8221 FAX: (603) 434-3194
 WEBSITE: HAMPSHIREFC.COM
 MMS VERMONT CERTIFIED

WATER SUPPLY DATA

Static pressure	62	psi
Frictional pressure	60	psi
Loss	292	gpm
Location	See Site Plan	
Elevation	43	Time 10 AM
Date	10-25-14	Refined Water Dept.
Information by	Refined Water Dept.	

SPRINKLERS

From This Sheet	148	Direction	FROM THE JOB, SEE SHEET 1
Symbol	RELIABLE 4.175 IN. SOLID GLASS GLOBE SPRINKLER 200 (RAT142)		
146	RELIABLE 4.175 IN. B.S.P. (1.5" TRIS. GLOBE) (RAT144)		

DRIVING

Sheet	5, Ground Level C
Contract No.	47373CH1
Drawn By	Benoit
Scale	1/8" = 1'-0"
Date	2-12-16
Approved by	ME SPMO

REVISIONS

NO.	DATE	DESCRIPTION
1		
2		
3		
4		
5		
6		
7		

Project: The Park Danforth Expansion & Renovation
 777 Stevens Ave.
 Portland, ME 04103

Contractor:
 PC Construction
 788 Stevens Ave.
 Portland, ME 04103

FIRE PROTECTION ENGINEER'S STAMP

FP 5 OF 11