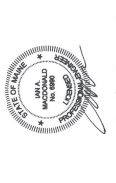


AVALLEE BRENSINGER ARCHITECTS
 95 Dow Street, Suite 400, Westbrook, ME 04090
 TEL: 603.633.2222 FAX: 603.633.2223 www.abrpa.com

Allied Engineering
 National Division of Electrical Contracting
 148 Vermont Street
 Portland, Maine 04108
 TEL: 603.771.2200
 FAX: 603.771.2201 www.aes.com



GRAPHIC SCALE
 1" = 12'
 0 1 2

The Park, Danforth

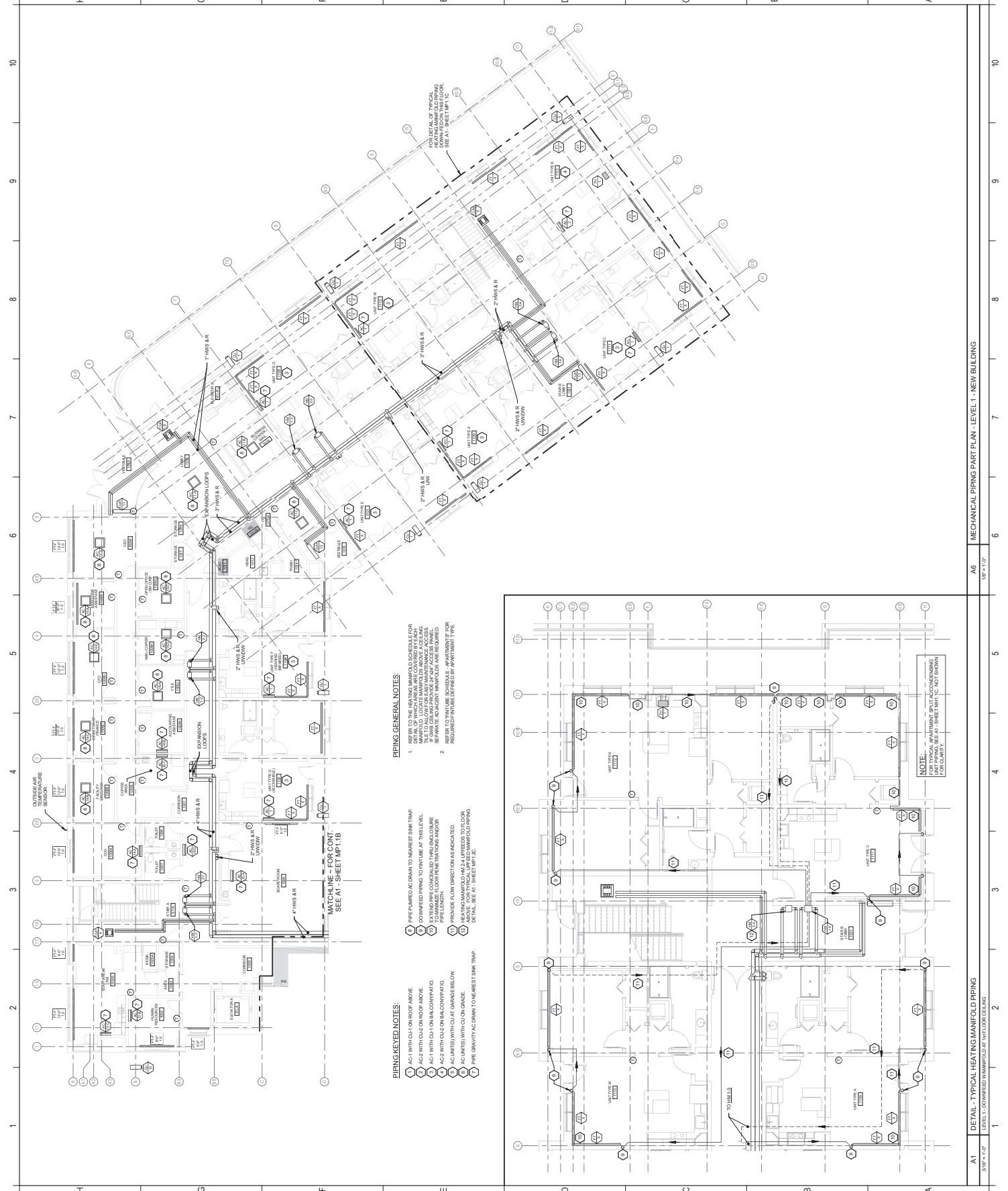
The Park Danforth -
 777 Stevens Avenue,
 Portland, ME, 04103

777 Stevens Ave, Portland, ME, 04103

| NO. | DESCRIPTION | DATE |
|-----|-------------|------|
| | | |
| | | |
| | | |
| | | |
| | | |
| | | |
| | | |
| | | |
| | | |
| | | |



| | |
|---|-----------------|
| CONTRACT: MECHANICAL PIPING PART PLAN -LEVEL 1- NEW BUILDING | |
| DRAWN BY: | ERB |
| PROJECT NO: | 220640 |
| DATE: | 08/02/2010 |
| REVISED: | OCTOBER 1, 2010 |
| SCALE: | AS SHOWN |
| MP1.1C | |
| Project Name: COMPLIANCE SET <small>CONTRACTOR SHALL OBTAIN NECESSARY PERMITS AND APPROVALS FROM APPLICABLE AGENCIES.</small> | |



PIPING GENERAL NOTES:

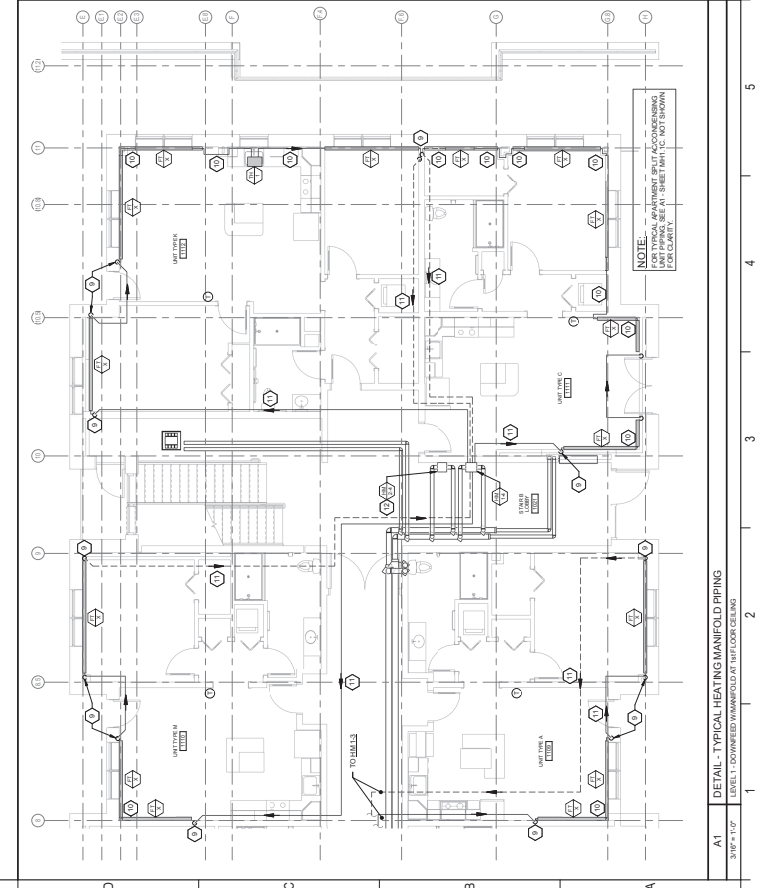
1. EXPANSION LOOPS SHALL BE PROVIDED FOR ALL PIPING SUBJECT TO THE DETAIL OF WHICH AREAS ARE COVERED BY EACH NOTE TO ALLOW FOR ANY MAINTENANCE ACCESS. REFER TO THE MECHANICAL SCHEDULE, APARTMENT FLOOR PLAN FOR TYPICAL MANIFOLD AND VALVE REQUIRED. REQUIRED INTUBES DEFINED BY APARTMENT TYPE.
2. REFER TO THE MECHANICAL SCHEDULE, APARTMENT FLOOR PLAN FOR TYPICAL MANIFOLD AND VALVE REQUIRED.

PIPING KEYED NOTES:

- 1. PIPE HANGERS AC DOWN TO NEAREST SINK TRAP.
- 2. DOWNWARD PIPING TO INTUBES AT THIS LEVEL.
- 3. DOWNWARD PIPING TO INTUBES AT THIS LEVEL TO MAINTAIN FLOOR FINISH ELEVATION ABOVE PIPE LENGTH.
- 4. PROVIDE FLOW DIRECTION AS INDICATED.
- 5. AC DOWN IS WITH CO. AT GRADE BELOW.
- 6. AC DOWN IS WITH CO. ON GRADE.
- 7. PIPE GRAVITY AC DOWN TO NEAREST SINK TRAP. DETAIL SEE AT - SHEET MP1.1C.

MATCHLINE - FOR CONT.
 SEE AT - SHEET MP1.1B

NOTE:
 FOR TYPICAL APARTMENT SPLIT ACCORDING TO UNIT PLAN. SEE AT - SHEET MP1.1C. NOT SHOWN FOR CLARITY.



| | | | |
|---------------|--|--------------|--|
| A1 | DETAIL - TYPICAL HEATING MANIFOLD AT THE FLOOR CEILING | AG | MECHANICAL PIPING PART PLAN - LEVEL 1 - NEW BUILDING |
| 3/16" = 1'-0" | | 1/8" = 1'-0" | |