

J. VALLEE BREININGER ARCHITECTS
 155 Dow Street, Suite 400, Manchester, NH 03109
 PH: 603.822.5450, FAX: 603.822.7283, www.JBRA.com



Allied Engineering
 Inc.
 148 Vermont Street
 Portland, Maine 04108
 P: 603.721.2200
 F: 603.721.2200
 www.alliedeng.com



The Park Danforth

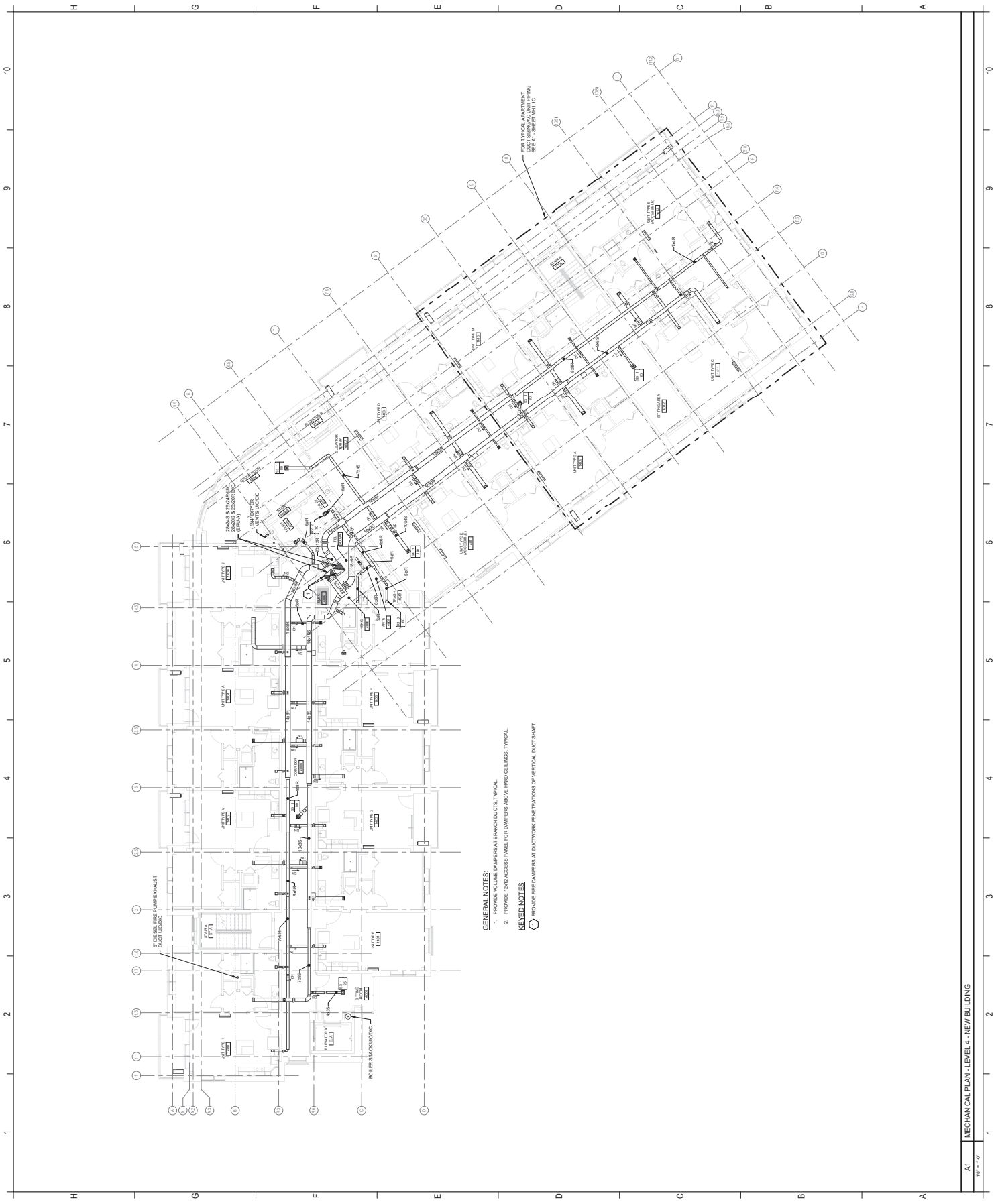
The Park Danforth -
 777 Stevens Avenue,
 Portland, ME, 04103

777 Stevens Ave, Portland, ME, 04103

NO.	DESCRIPTION	DATE
1.	ADDENDUM NO. 2	2015.05.25
2.	ADDENDUM NO. 4	2015.07.09



CONTRACT:	
MECHANICAL PLAN - LEVEL 4 - NEW BUILDING	
DRAWN BY:	REV:
PROJECT NO:	020640
DATE:	08/02/15
REVISION:	OCTOBER 16, 2015
SCALE:	AS SHOWN
MH1.4C	
Project Title	
COMFORMANCE SET	
COPYRIGHT © 2015 BY ALLIED ENGINEERING, INC. PORTLAND, ME. ALL RIGHTS RESERVED.	



- GENERAL NOTES**
1. PROVIDE VOLUME DAMPERS AT BRANCH DUCTS, TYPICAL.
 2. PROVIDE 12x12 ACCESS PANEL FOR DAMPERS ABOVE HANG CEILING, TYPICAL.
- KEYED NOTES**
- PROVIDE FIRE DAMPERS AT DUCTWORK PENETRATIONS OF VERTICAL DUCT SHAFT.