

Field Report

The Park Danforth **Project No:** 13-059-00
Portland ME **Field Report No:** 18

To: Mark Donovan **Time of Visit:** 8:00 AM
 PC Construction **Date of Visit:** 9/13/2016
 131 Presumpscot Street **Weather:** Sunny, Clear, 70F
 Portland ME

Submitted by: Kim McCarthy **Copies:**
Present: Scott Timmons (LBA), Kim McCarthy (LBA) Ron Norton Construction Management Consultin
Andrew Pires PC Construction
Kemp Carey PC Construction

Item	Description	Status:
------	-------------	---------

18.01	<u>WORK IN PROGRESS</u>	Observation
--------------	--------------------------------	-------------

Exterior

- a. Masonry continuing along Arbor Street elevation
- b. Curtainwall and Storefront installation ongoing
- c. Connector Steel Framing appears to have been placed.
- d. Connector Roof decking underway.
- e. Weather Barrier ongoing at end of West wing
- f. Roofing metal panel ongoing
- g. Connector grading work ongoing
- h. Balcony railing installation
- i. Level 5 roof deck roofing installation underway.

Tower Interior

- j. Casework installation underway through level 1
- k. Finish floor installation ongoing through level 2
- l. Finish ceiling paint, slab moisture mitigation, and corridor ceiling grid and drywall soffit ongoing through level 3
- m. Interior door installation, prime painting, and wood millwork ongoing through level 4
- n. Interior drywall, apartment ceiling installation, and MEP rough ins ongoing through level 5

Connector and Main Street:

- o. Spray fireproofing underway (connector)
- p. Partition framework in Main Street renovation area underway.

Item	Description	Status:
18.02	Verify installed finish flooring remains properly protected. See image B P18 of 19	CM follow up
18.03	Sealant should return to window frame and not leave a gap. See image A P 17 of 19	Correct Work
18.04	Deficiencies in mortar are visible. Correct work per specification section 04 20 00-3.01. See image B P17 of 19	Correct Work
18.05	Repair and/or replace any damaged casework. See image a P 18 of 19	Correct Work
18.06	Precast concrete balcony patch does not match samples previously submitted. See image A P19 of 19	Correct Work
18.07	At locations where the exterior brick intersects a precast balcony, add another brick course and seal gap to balcony. See image A P19 of 19	Correct Work

Attached Sketches:



New tower construction from Forest Ave at Arbor Street

A



New tower construction at end of West wing looking south east

B



New tower construction west wing (courtyard side)

A



New tower construction east wing (courtyard side)

B



New tower construction east wing over garage entrance

A



New tower construction east wing garage entrance

B



Connector construction, entry side

A



Connector construction, courtyard side

B



Main Street renovations

A



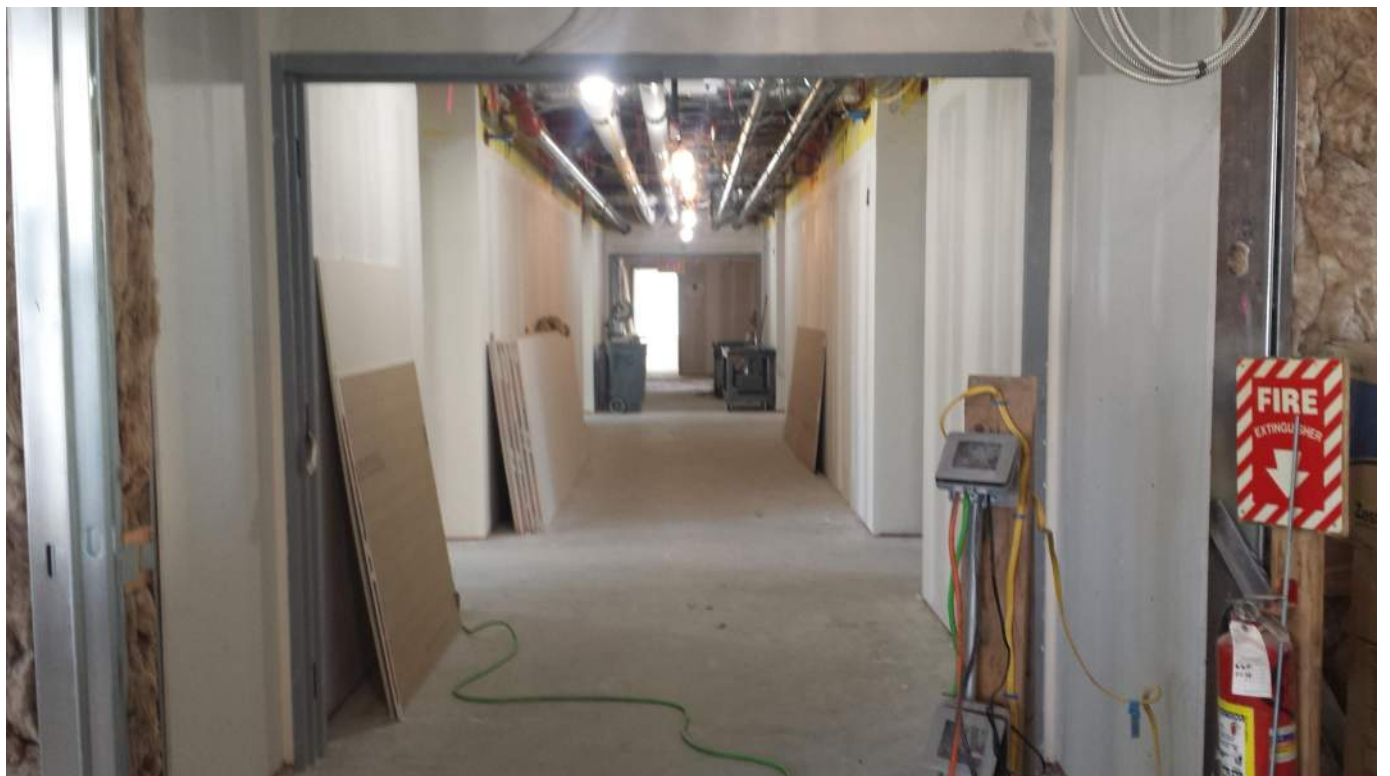
Main Street Renovations

B



New tower construction level 1 west wing corridor

A



New tower construction level 1 east wing corridor

B



Level 1 typical unit progress (unit 1111 shown)

A



Level 1 typical unit progress (unit 1111 shown)

B



New tower construction level 2 corridor east wing

A



New tower construction level 2 corridor west wing

B



Level 2 typical unit progress (unit 1210 shown)

A



Level 2 typical unit progress (unit 1210 shown)

B



New tower construction level 3 west wing

A



New tower construction level 3 east wing

B



Level 3 typical unit progress (unit 1301 shown)

A



Level 3 typical unit progress (unit 1301 shown)

B



New tower construction level 4 east wing

A



New tower construction level 4 west wing

B



Level 4 typical unit progress (unit 1411 shown)

A



New tower construction at end of West wing looking south east

B



New tower construction level 5 west wing

A



New tower construction level 5 east wing

B



Level 5 typical unit progress (unit 1501 shown)

A



Level 5 typical unit progress (unit 1501 shown)

B



Level 5 community roof deck

A



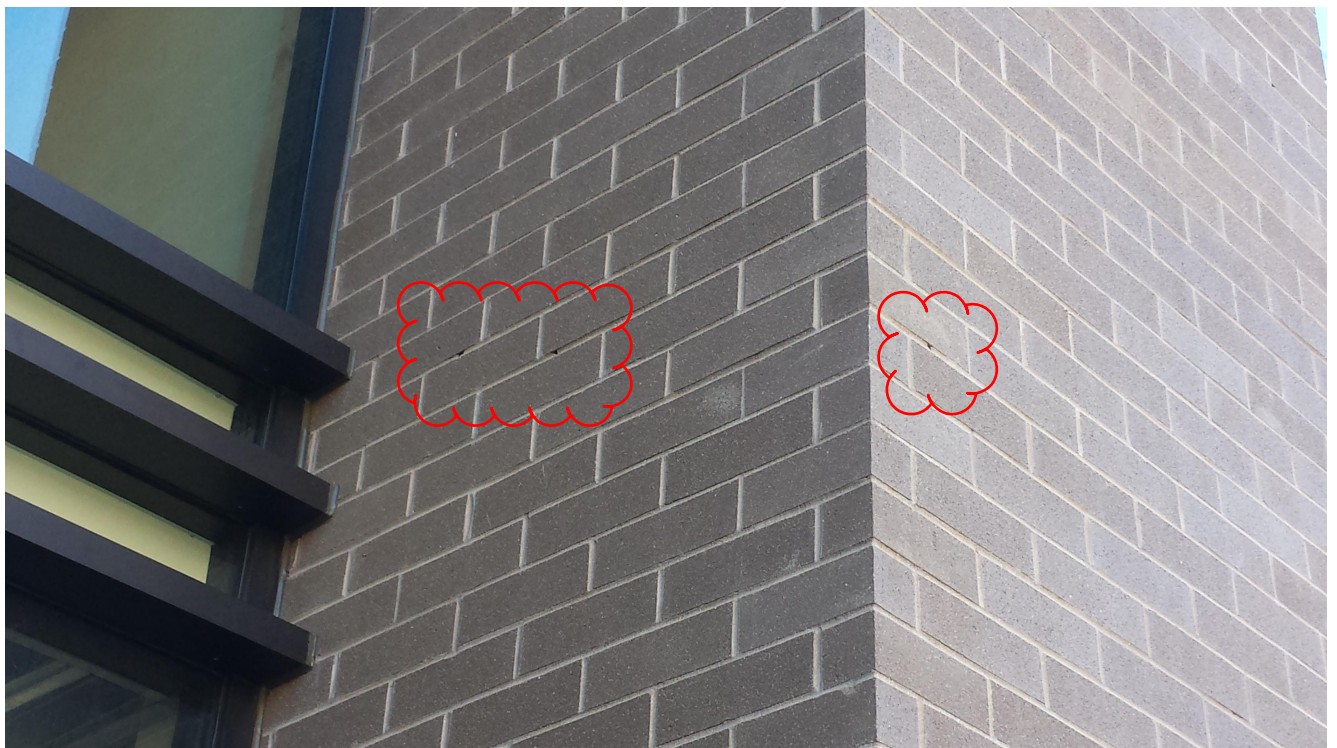
Level 5 community room

B



Reference item 18.03

A



Reference item 18.04

B



Reference item 18.05

A



Reference item 18.02

B

