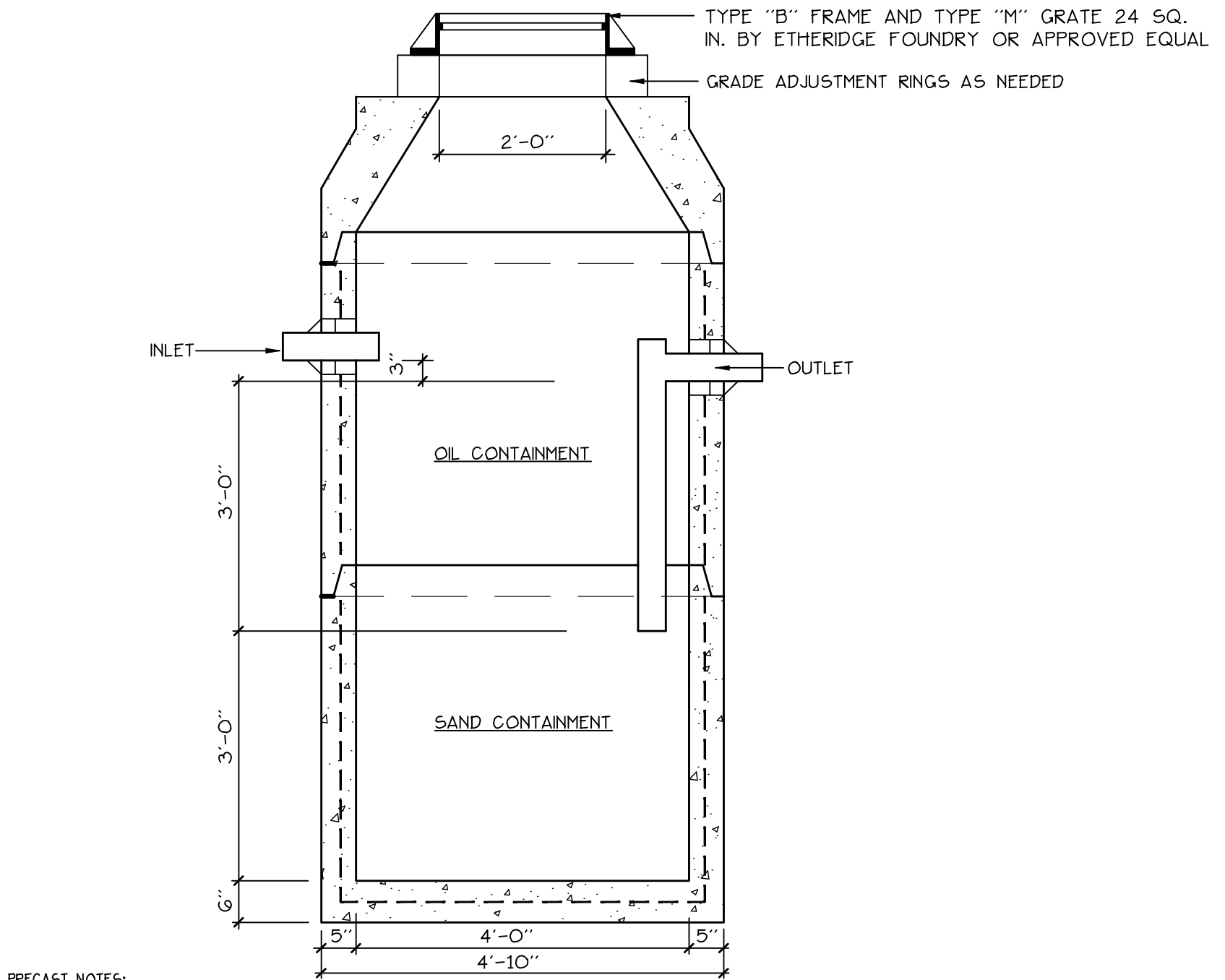


	A	B	C	D	E	F	G
LG 1+2	2.5'	4'+4"	13'	122.10	120.60	117.93	115.96
LG 3+4	2.5'	4'+4"	13'	120.39	118.89	116.22	114.22
LG 5+6	2.5'	4'+4"	13'	122.13	120.63	117.96	115.96
LG 8,9,10+11	3.0'	4'+4"+4'+4"	22'	119.81	118.31	115.64	112.64
LG 13+14	2.5'	4'+4"	13'	117.03	115.53	112.86	110.86
LG 15,16+17	3.0'	4'+4"+4"	18'	116.58	115.08	112.46	109.00
DW1	2.5'	4'	9'	124.90	123.15	120.74	117.74
DW2	2.5'	4'	9'	124.90	123.15	120.74	117.74
DW3	2.5'	4'	9'	124.90	123.15	120.74	117.74

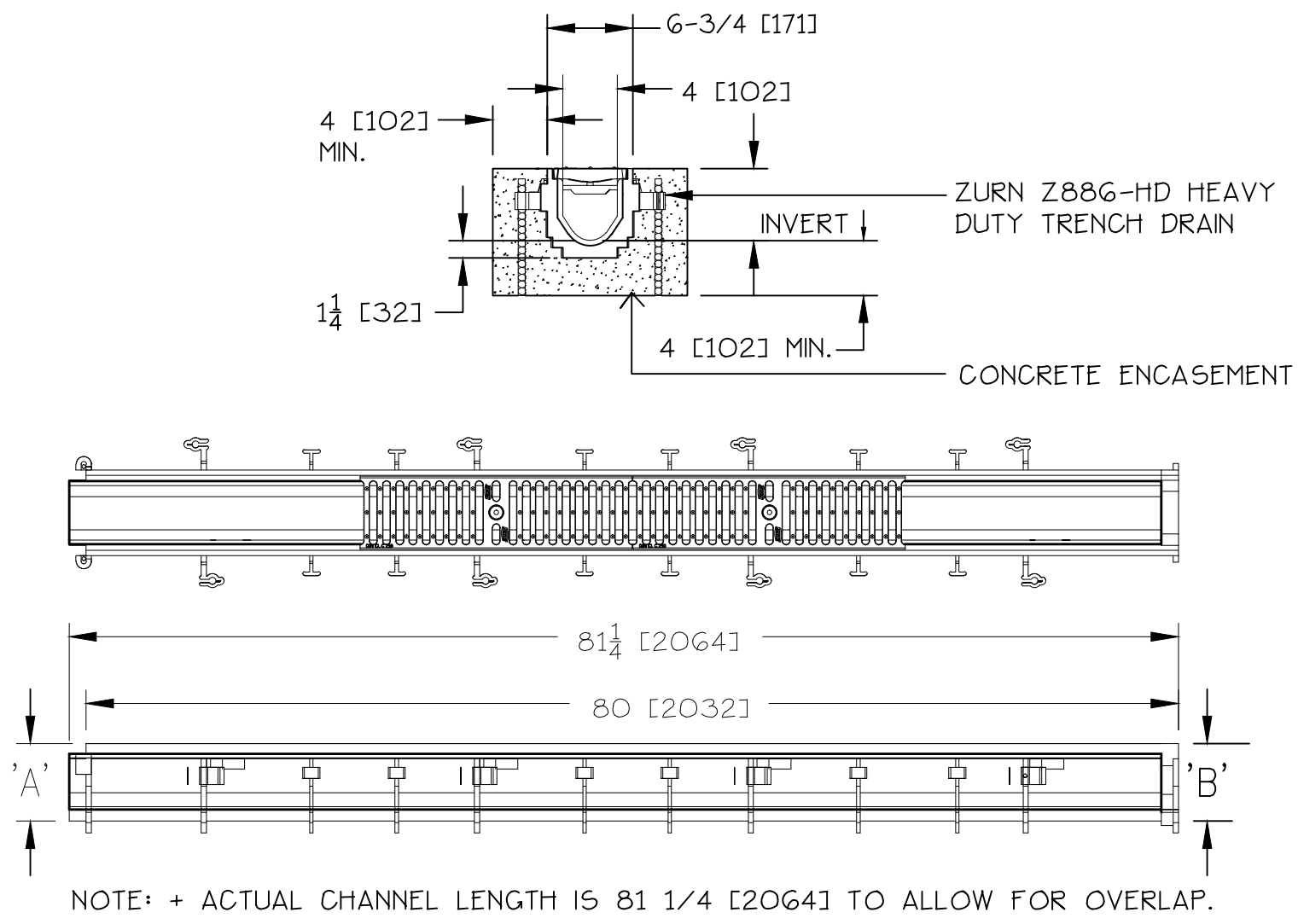
NOTE: SUBSURFACE SOIL CONDITIONS TO BE INSPECTED BY SITE EVALUATOR TO CONFIRM PENETRATION OF HARDPAN LAYER.

1 LG.2 PRECAST CONCRETE LEACHING GALLEY / DRY WELL
NOT TO SCALE



- PRECAST NOTES:**
1. CONCRETE 4000 PSI IN 28 DAYS.
 2. CONE SECTION IS FIBER REINFORCED CONCRETE.
 3. DESIGNED TO CONFORM TO A.S.T.M. C-478.
 4. ALL MANHOLE MATERIAL MEETS H-20 LOADING REQUIREMENTS.
 5. JOINTS SEALED WITH BUTYL RUBBER JOINT SEALANT AASHTO M-19
 6. ALL PIPE BOOT TO HAVE FLEXIBLE WATERIGHT BOOT AS A.S.T.M. C-923
 7. EXTERIOR TO RECEIVE DAMP PROOF COATING.
 8. SEE PROJECT MANUAL FOR CAST IRON FRAMES AND GRATES.
 9. PRODUCT ITEM #G-11) MANUFACTURED BY PRECAST CONCRETE PRODUCTS ON MAINE, INC. (207-729-1628) OR APPROVED EQUAL.

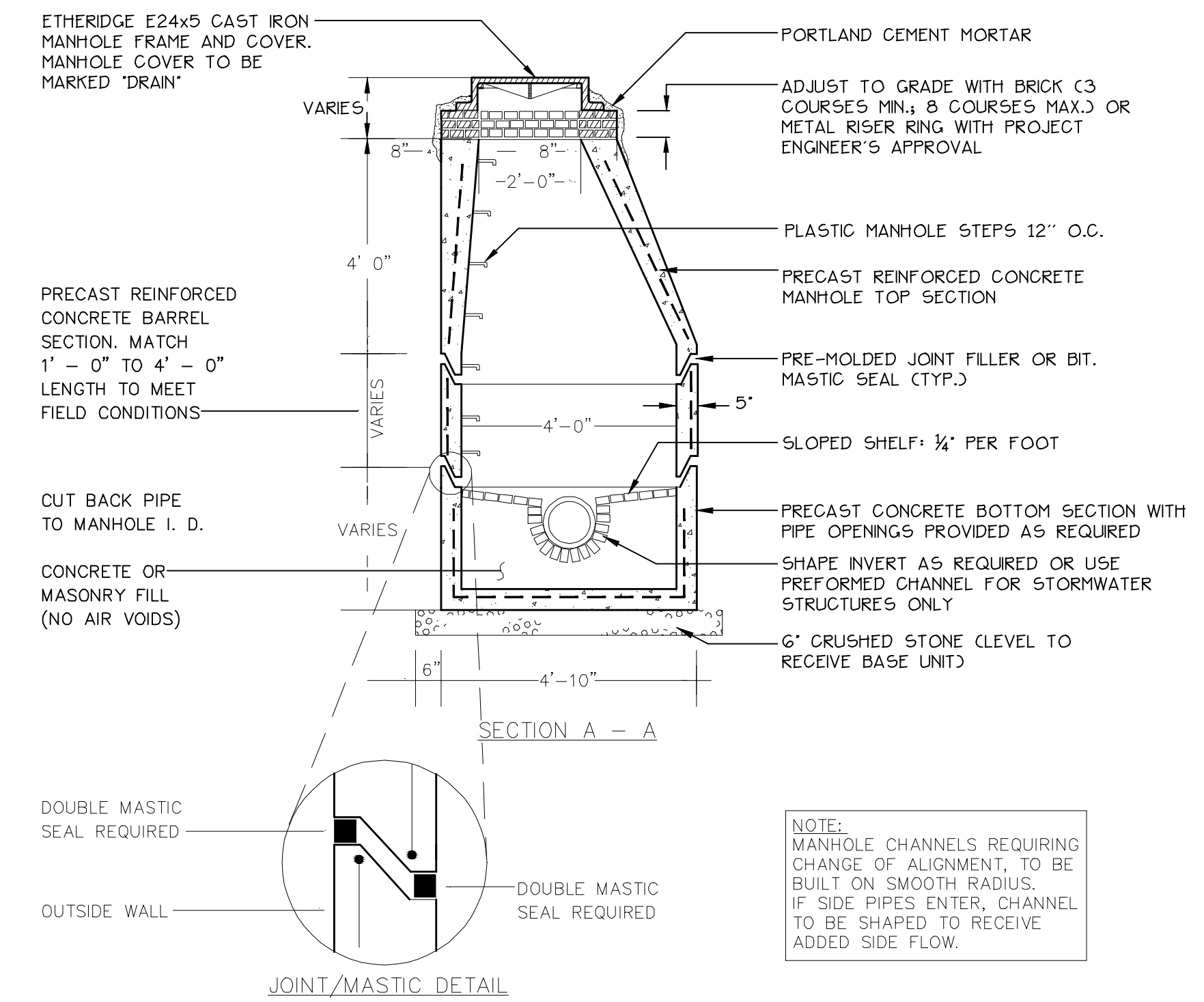
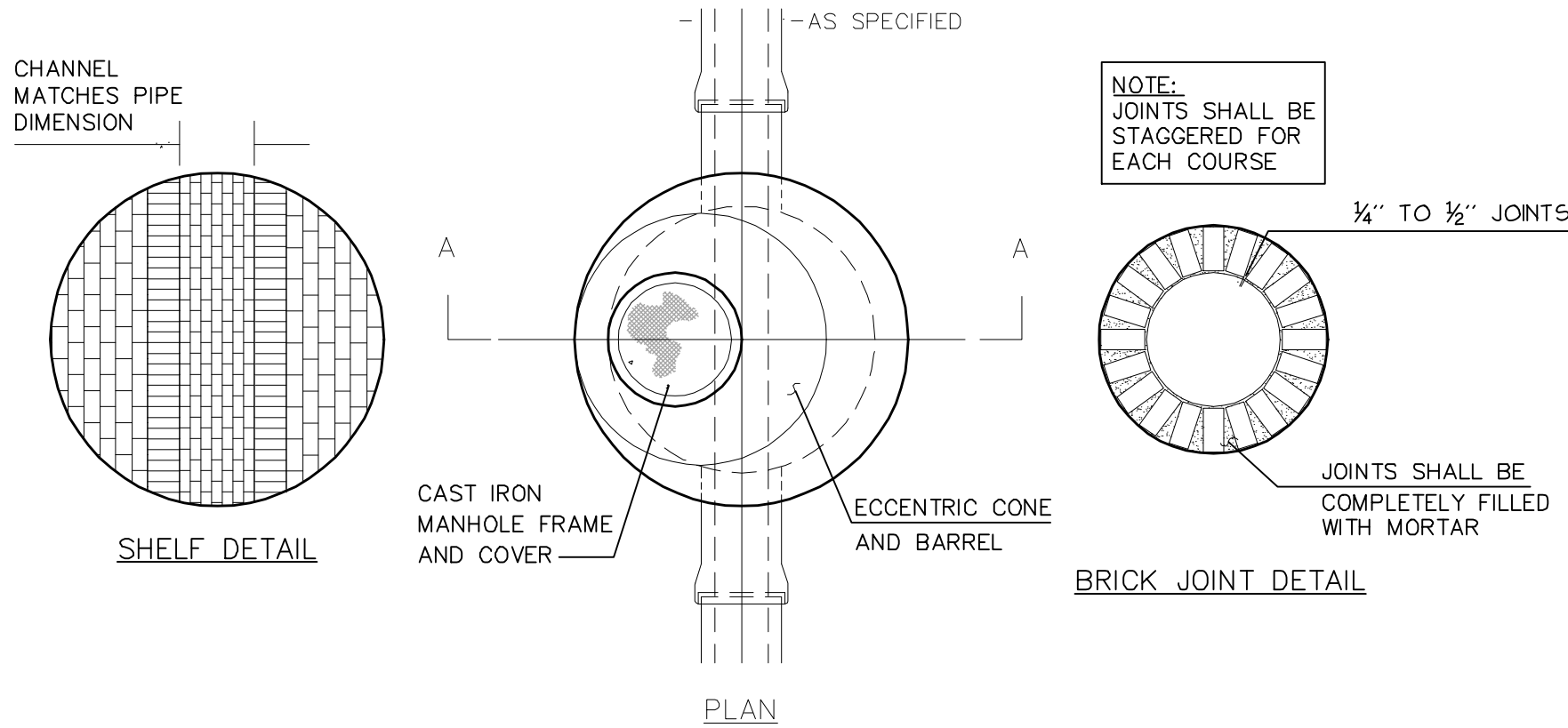
2 LG.2 PRECAST OIL AND WATER SEPARATOR
NOT TO SCALE



3 LG.2 TRENCH DRAIN DETAIL
NOT TO SCALE

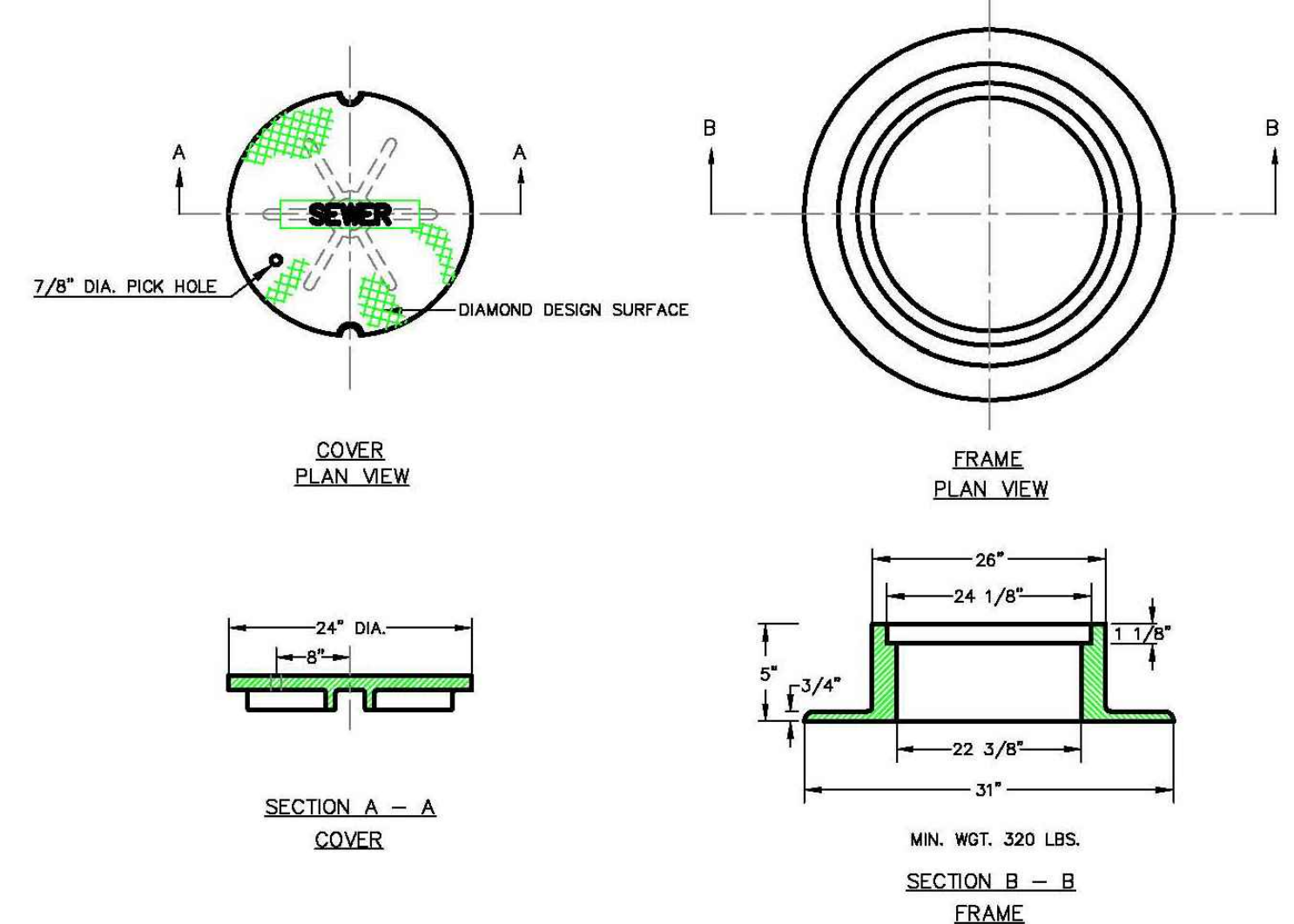
GENERAL NOTES FOR MANHOLES AND CATCH BASINS

1. ALL CONCRETE SHALL HAVE A MINIMUM ULTIMATE COMPRESSIVE STRENGTH OF 4000 PSI PER SQ. INCH AT THE END OF 28 DAYS, UNLESS OTHERWISE NOTED.
2. MANHOLES MAY BE CONSTRUCTED OF PRECAST REINFORCED CONCRETE, OR CAST IN PLACE.
3. PRECAST REINFORCED CONE BARREL MANUFACTURED PER ASTM SPEC. C-478.
4. ALL STORM AND SEWER MANHOLE COVERS SHALL BE SOLID AND SHALL HAVE ONE 7/8\"/>

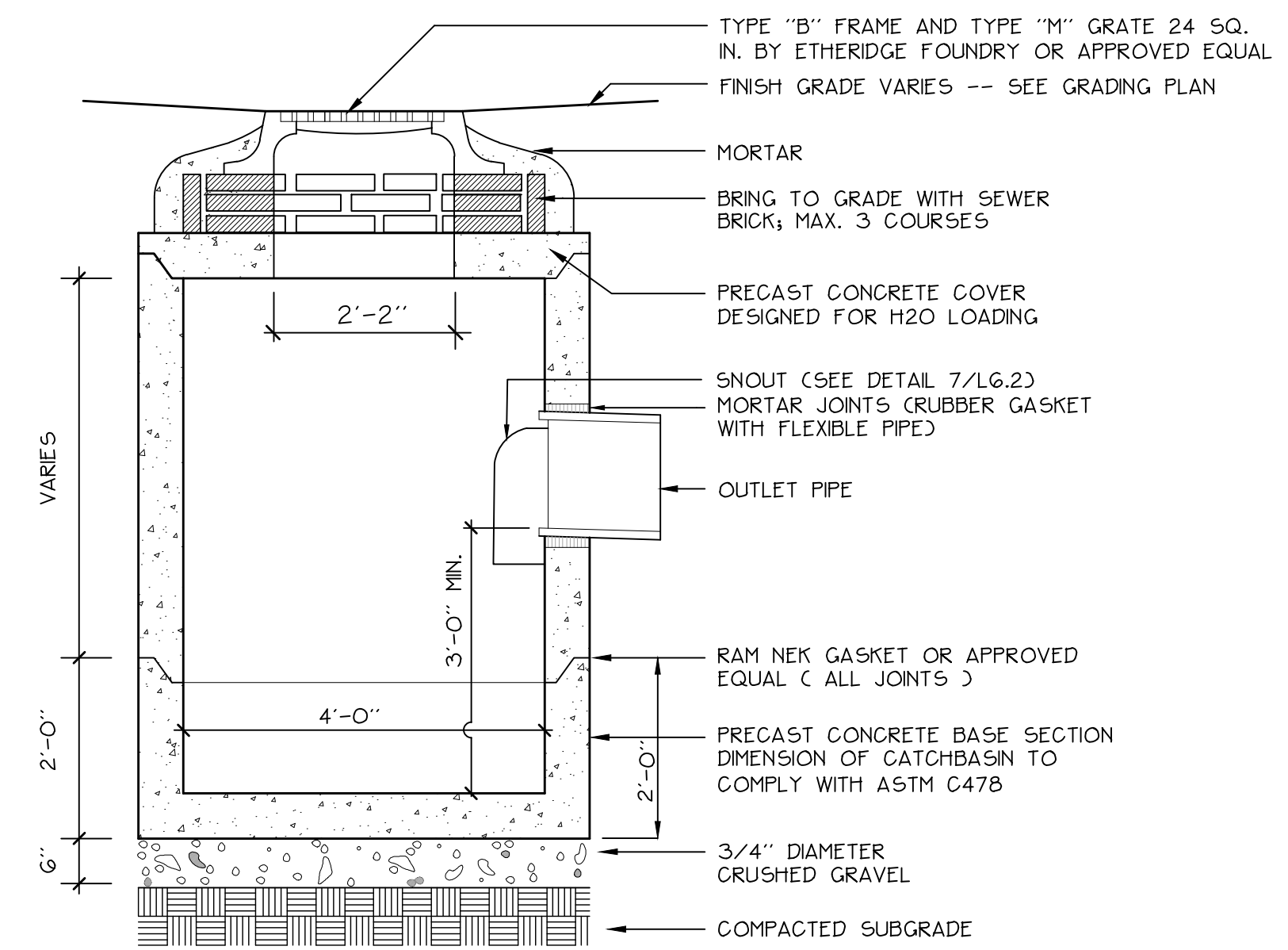


4 LG.2 PRE-CAST CONCRETE MANHOLE
NOT TO SCALE

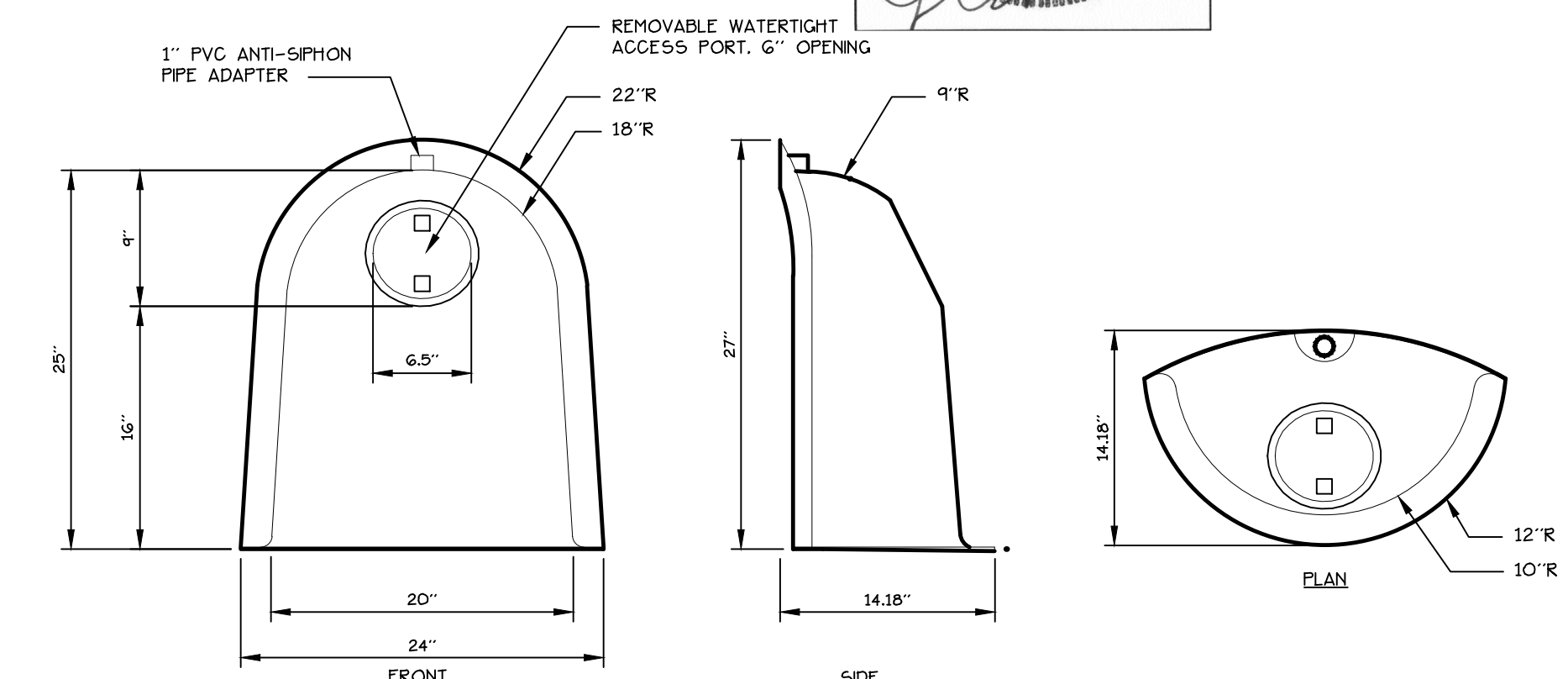
NOTE:
ALL MANHOLE COVERS SHALL BE SOLID AND SHALL HAVE ONE 7/8\"/>



5 LG.2 CAST IRON MANHOLE COVER AND FRAME
NOT TO SCALE



6 LG.2 PRECAST CONCRETE CATCHBASIN
NOT TO SCALE



7 LG.2 THE SNOOT CALL CATCHBASIN DRAINAGE STRUCTURES
NOT TO SCALE

Prepared For:
Owner:
Home For The Aged
777 Stevens Avenue
Portland, Maine 04103
Tel.: 207-797-7710

Applicant:
The Park Danforth
777 Stevens Avenue
Portland, Maine 04103
Tel.: 207-797-7710

Prepared By:
MITCHELL & ASSOCIATES
Landscape Architects
The Staples School
70 Center Street
Portland, Maine 04101
Tel.: 207-774-4427

The Park Danforth
Portland, Maine
777 Stevens Avenue

Date:
OCTOBER 17, 2014

Issued For:
CONSTRUCTION

Revisions:
NOV. 25, 2014: Per City of Portland Staff Review Comments
JAN. 5, 2015: Per City of Portland Staff Review Comments
APR. 10, 2015: Amended Site Plan and Subdivision Plan
OCT. 16, 2015: 100% Construction Documents

Reproduction or reuse of this document without the expressed written consent of Mitchell & Associates is prohibited.
© 2015

Title:
SITE DETAILS

Scale: AS SHOWN

North:

Sheet No.:
L6.2

I:\Projects\Danforth\DWG\LG.2 PRECAST OIL AND WATER SEPARATOR.dwg 10/16/2014 4:10 PM