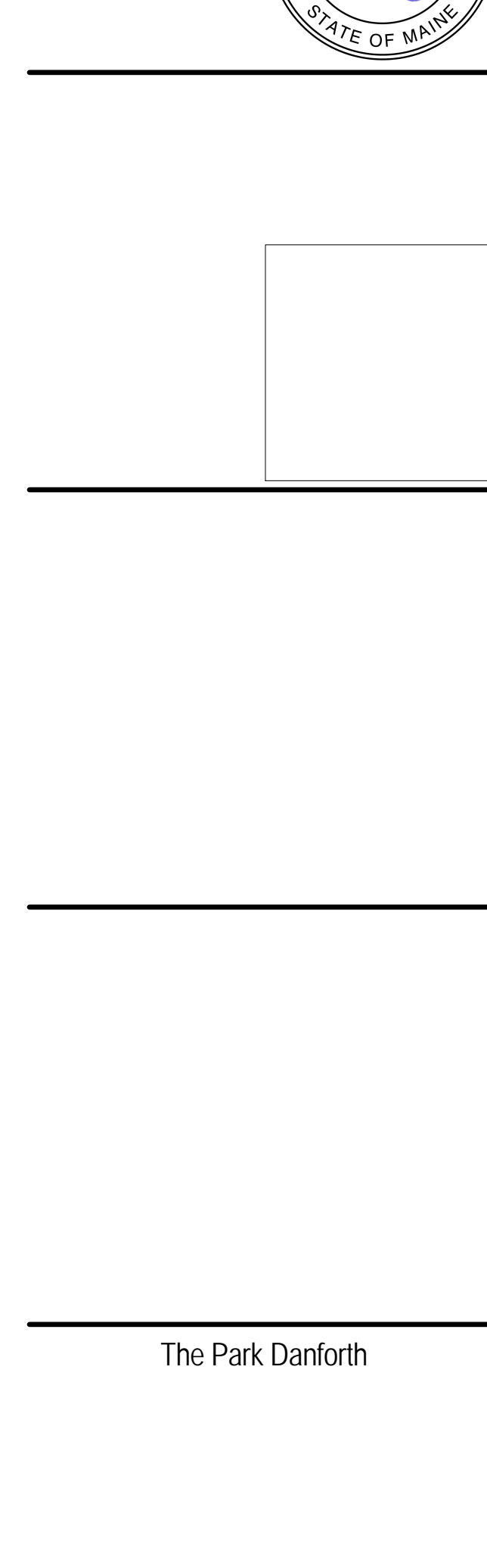
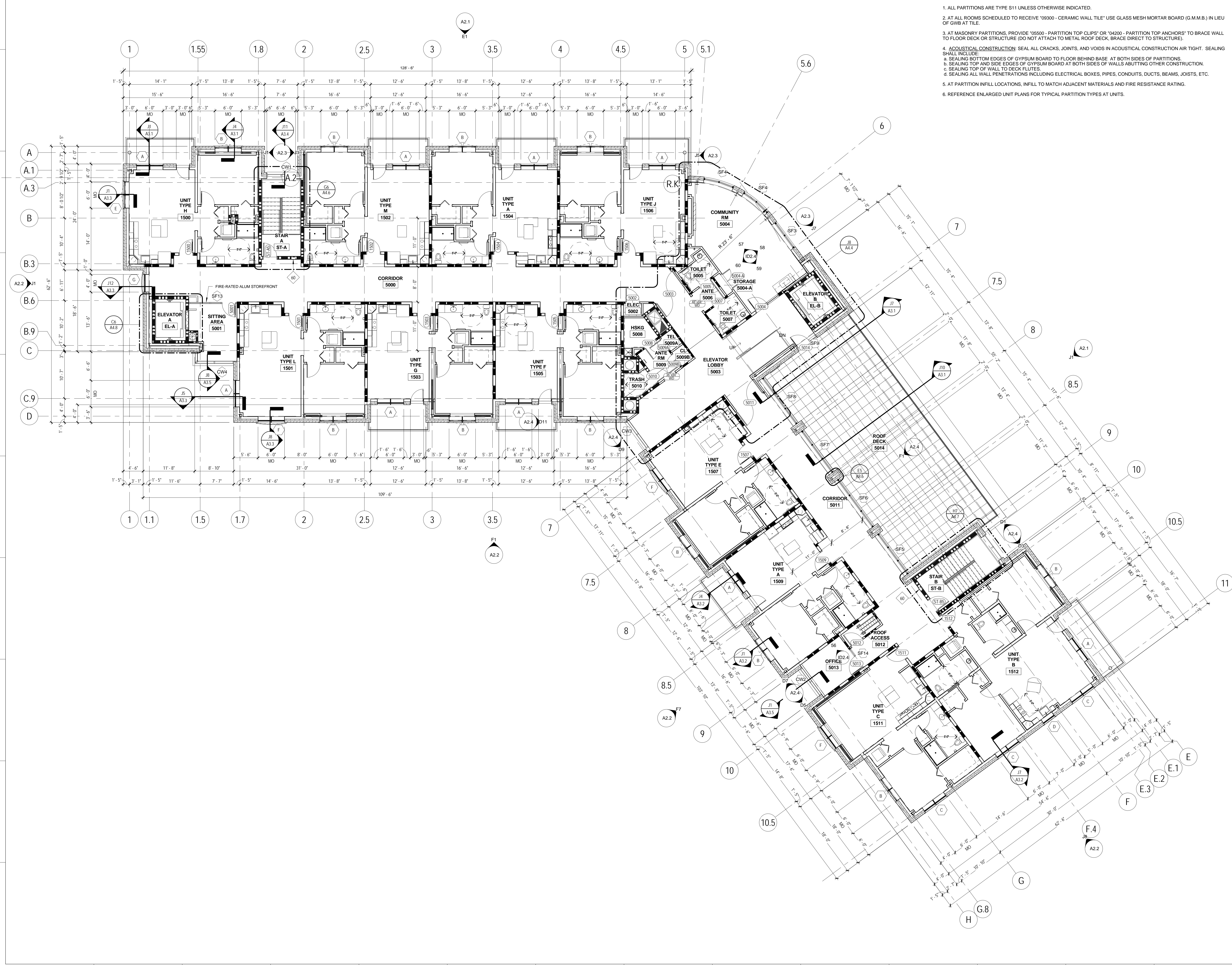
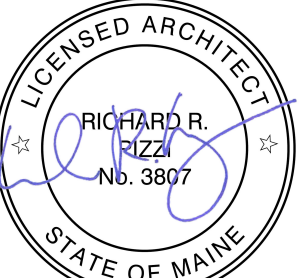


GENERAL PARTITION NOTES

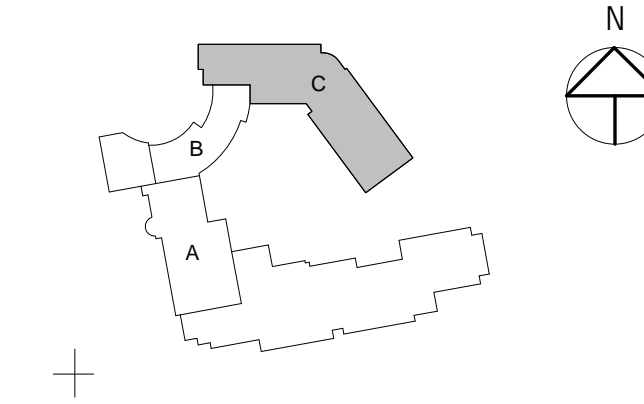
- ALL PARTITIONS ARE TYPE S11 UNLESS OTHERWISE INDICATED.
- AT ALL ROOMS SCHEDULED TO RECEIVE "09300 - CERAMIC WALL TILE" USE GLASS MESH MORTAR BOARD (G.M.M.B.) IN LIEU OF GWB AT TILE.
- AT MASONRY PARTITIONS, PROVIDE "05500 - PARTITION TOP CLIPS" OR "04200 - PARTITION TOP ANCHORS" TO BRACE WALL TO FLOOR DECK OR STRUCTURE. (DO NOT ATTACH TO METAL ROOF DECK, BRACE DIRECT TO STRUCTURE).
- ACOUSTICAL CONSTRUCTION: SEAL ALL CRACKS, JOINTS, AND VOIDS IN ACOUSTICAL CONSTRUCTION AIR TIGHT. SEALING SHALL INCLUDE:
 - SEALING BOTTOM EDGES OF GYPSUM BOARD TO FLOOR BEHIND BASE AT BOTH SIDES OF PARTITIONS.
 - SEALING TOP AND SIDE EDGES OF GYPSUM BOARD AT BOTH SIDES OF WALLS ABUTTING OTHER CONSTRUCTION.
 - SEALING TOP OF WALL TO DECK FLUTES.
 - SEALING ALL WALL PENETRATIONS INCLUDING ELECTRICAL BOXES, PIPES, CONDUITS, DUCTS, BEAMS, JOISTS, ETC.
- AT PARTITION INFILL LOCATIONS, INFILL TO MATCH ADJACENT MATERIALS AND FIRE RESISTANCE RATING.
- REFERENCE ENLARGED UNIT PLANS FOR TYPICAL PARTITION TYPES AT UNITS.



RENOVATIONS AND ADDITIONS

777 Stevens Ave
Portland, ME 04103

NO.	DESCRIPTION	DATE



CONTENT:
LEVEL 5 FLOOR PLAN - NEW BUILDING

DRAWN BY: SMT
PROJECT NO: 13-059-00
DATE: 06/05/2015
REVISED: 10/16/2015
SCALE: 1/8" = 1' - 0"

A1.5

Project Phase
CONFORMANCE SET

COPYRIGHT © 2015 BY LAVALLEE BRENSINGER PROFESSIONAL ASSOCIATION. ALL RIGHTS RESERVED. NO REPRODUCTION WITHOUT PERMISSION.