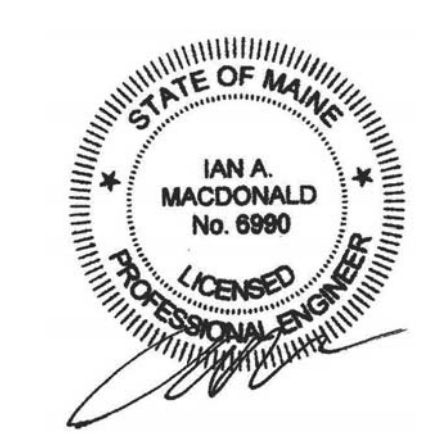


160 Veranda Street  
 Portland, Maine 04103  
 T: 207.221.2240  
 F: 207.221.2246  
 Web: www.allied-eng.com

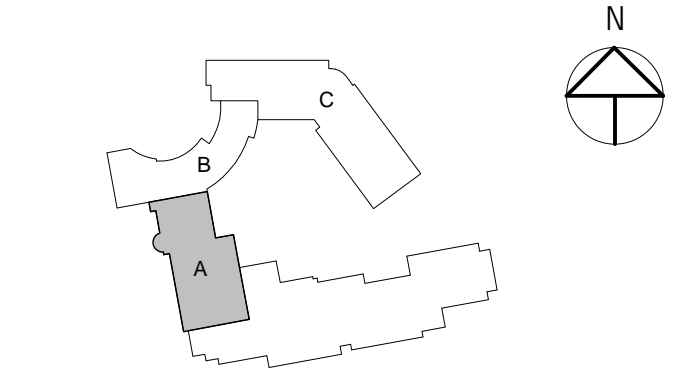


Graphic Scale: 1" = 10' 0"

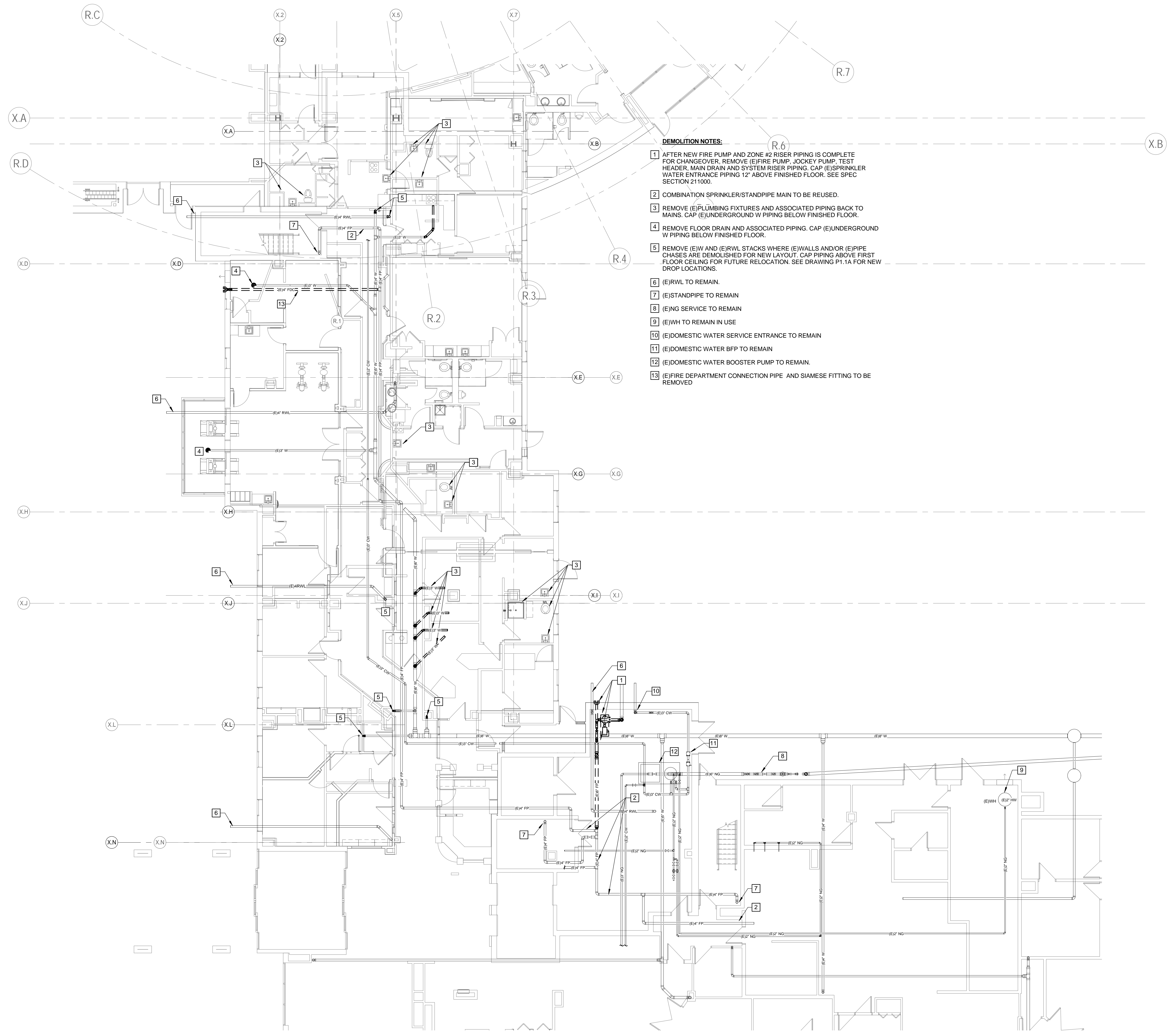
The Park Danforth

777 Stevens Ave, Portland, ME, 04103

NO.	DESCRIPTION	DATE



CONTENT:	
PLUMBING - DEMOLITION LEVEL 1 - MAIN STREET	
DRAWN BY:	SGH
PROJECT NO.:	
DATE:	06/05/2015
REVISED:	
SCALE:	AS NOTED
<b>PD1.1A</b>	
Project Phase 100% CONSTRUCTION DOCUMENTS	
<small>COPYRIGHT © 2014 BY LAVALLEE BRENSINGER PROFESSIONAL ASSOCIATION. ALL RIGHTS RESERVED. NO REPRODUCTION WITHOUT PERMISSION.</small>	



- DEMOLITION NOTES:**
- 1 AFTER NEW FIRE PUMP AND ZONE #2 RISER PIPING IS COMPLETE FOR CHANGEOVER, REMOVE (E)FIRE PUMP, JOCKEY PUMP, TEST HEADER, MAIN DRAIN AND SYSTEM RISER PIPING, CAP (E)SPRINKLER WATER ENTRANCE PIPING 12" ABOVE FINISHED FLOOR. SEE SPEC SECTION 211000.
  - 2 COMBINATION SPRINKLER/STANDPIPE MAIN TO BE REUSED.
  - 3 REMOVE (E)PLUMBING FIXTURES AND ASSOCIATED PIPING BACK TO MAINS. CAP (E)UNDERGROUND W PIPING BELOW FINISHED FLOOR.
  - 4 REMOVE FLOOR DRAIN AND ASSOCIATED PIPING. CAP (E)UNDERGROUND W PIPING BELOW FINISHED FLOOR.
  - 5 REMOVE (E)W AND (E)RWL STACKS WHERE (E)WALLS AND/OR (E)PIPE CHASES ARE DEMOLISHED FOR NEW LAYOUT. CAP PIPING ABOVE FIRST FLOOR CEILING FOR FUTURE RELOCATION. SEE DRAWING P1.1A FOR NEW DROP LOCATIONS.
  - 6 (E)RWL TO REMAIN.
  - 7 (E)STANDPIPE TO REMAIN
  - 8 (E)NG SERVICE TO REMAIN
  - 9 (E)WH TO REMAIN IN USE
  - 10 (E)DOMESTIC WATER SERVICE ENTRANCE TO REMAIN
  - 11 (E)DOMESTIC WATER BFP TO REMAIN
  - 12 (E)DOMESTIC WATER BOOSTER PUMP TO REMAIN.
  - 13 (E)FIRE DEPARTMENT CONNECTION PIPE AND SIAMESE FITTING TO BE REMOVED

06/05/2015 9:26:57 AM N:\Projects\2015\141018 - Park Danforth\00 Drawing Files - REVIT\2015\141018.rvt

A1 PLUMBING PART PLAN - DEMOLITION - LEVEL 1 - MAIN STREET

1/8" = 1'-0"