

160 Veranda Street
 Portland, Maine 04103
 T: 207.221.2240
 F: 207.221.2246
 Web: www.allied-eng.com

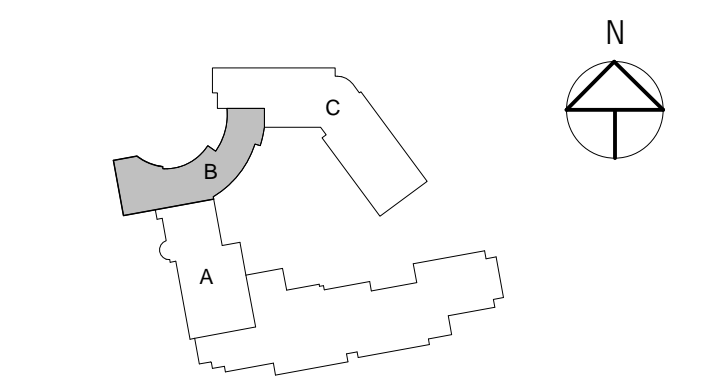


Graphic Scale: 1" = 10' 0"

The Park Danforth

777 Stevens Ave, Portland, ME, 04103

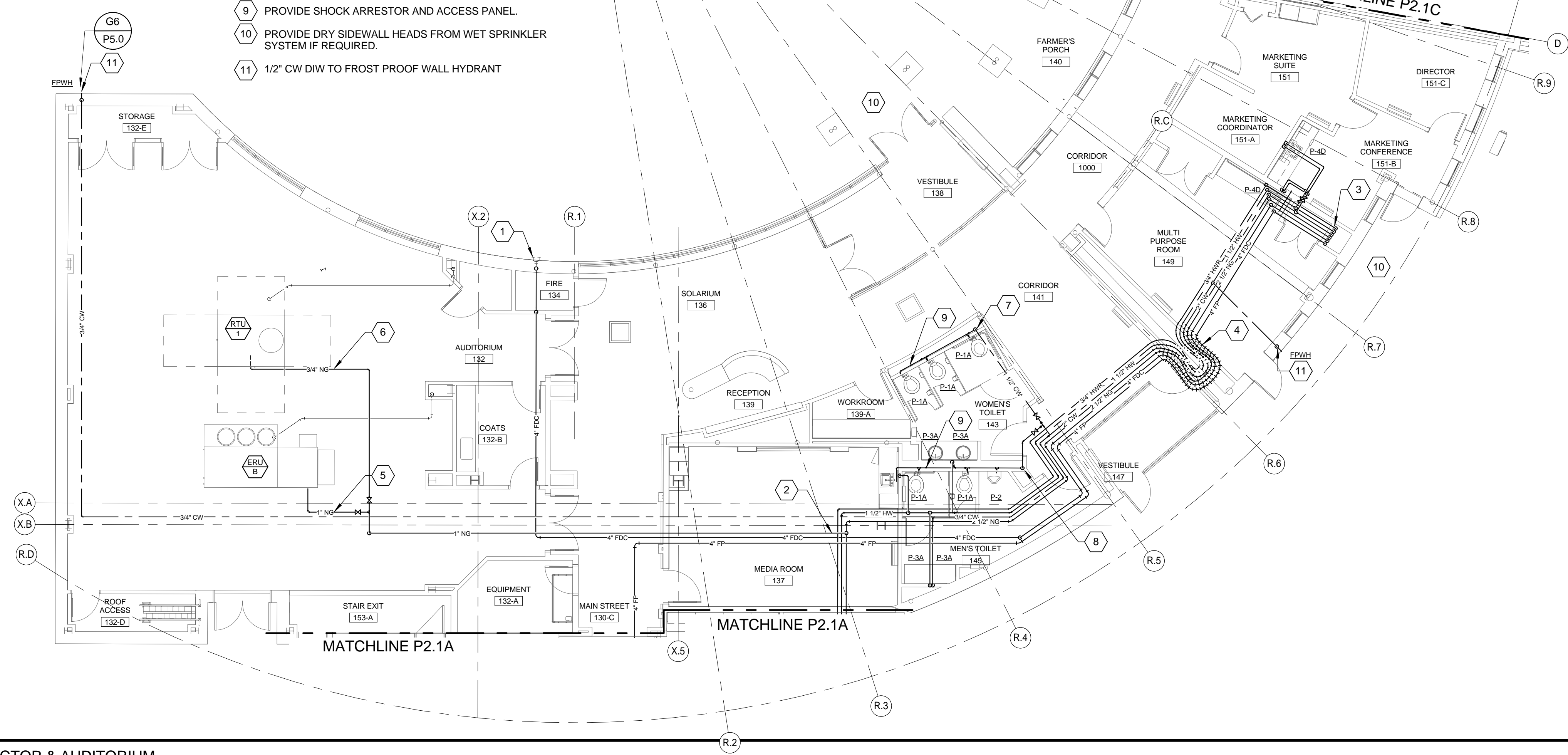
NO.	DESCRIPTION	DATE
1	Addendum No. 2	2015-06-25



CONTENT: PLUMBING - SUPPLY LEVEL 1 AUDITORIUM & CONNECTOR AND PLUMBING SCHEDULES	
DRAWN BY:	SGH
PROJECT NO.:	
DATE:	06/05/2015
REVISED:	
SCALE:	AS NOTED
P2.1B	
Project Phase 100% CONSTRUCTION DOCUMENTS	
COPYRIGHT © 2014 BY LAVALLEE BRENSINGER PROFESSIONAL ASSOCIATION. ALL RIGHTS RESERVED. NO REPRODUCTION WITHOUT PERMISSION.	

KEYED NOTES:

- 1 4" STORZ FIRE DEPARTMENT CONNECTION COORDINATE WITH PORTLAND FIRE DEPARTMENT
- 2 ROUTE NG ON ROOF.
- 3 3/4" HWR, 1 1/2" HW, 2" CW, 3" NG, 4" FDC & FP PIPING FROM BOILER ROOM BELOW. SEE DRAWING P2.1A FOR CONTINUATION.
- 4 PROVIDE FLEX JOINTS AT BUILDING EXPANSION JOINT LOCATED ALONG COLUMN R.6; SEE SPEC 220516.
- 5 1" NG TO ERU-B, 200 MBH
- 6 3/4" NG TO RTU-1, 160 MBH
- 7 1 1/2" CW DN, 1" CW TO P-1A AND P-1A
- 8 1 1/2" CW DN, 1" CW TO P-1A AND P-1A, 3/4" CW TO P-2 AND 1/2" CW TO P-8.
- 9 PROVIDE SHOCK ARRESTOR AND ACCESS PANEL.
- 10 PROVIDE DRY SIDEWALL HEADS FROM WET SPRINKLER SYSTEM IF REQUIRED.
- 11 1/2" CW DIW TO FROST PROOF WALL HYDRANT



E1 PLUMBING PART PLAN - SUPPLY - LEVEL 1 - CONNECTOR & AUDITORIUM

1/8" = 1'-0"

TAG	DESCRIPTION	BRANCH SIZES					NOTES
		CW	HW	VENT	WASTE	NAT. GAS	
P-1A	WATER CLOSET-FLUSH VALVE, WALL MOUNT	1"	---	1-1/2"	3"	---	ACCESSIBLE
P-1B	WATER CLOSET - TANK TYPE, FLOOR MOUNT	1/2"	---	1-1/2"	3"	---	ACCESSIBLE
P-2	URINAL	3/4"	---	1-1/2"	2"	---	ACCESSIBLE
P-3A	LAVATORY, COUNTER MOUNT, METERED FAUCET	3/8"	3/8"	1-1/2"	1-1/2"	---	ACCESSIBLE
P-3B	LAVATORY, INTEGRAL WITH COUNTER - APARTMENTS	3/8"	3/8"	1-1/2"	1-1/2"	---	---
P-3C	LAVATORY, COUNTER MOUNT	3/8"	3/8"	1-1/2"	1-1/2"	---	ACCESSIBLE
P-4A	KITCHEN SINK W/ RESIDENTIAL DISHWASHER (DW)	1/2"	1/2"	1-1/2"	1-1/2"	---	ACCESSIBLE, SEE DETAIL D4 ON P5.0
P-4B	KITCHEN SINK W/ RESIDENTIAL DISHWASHER (DW)	1/2"	1/2"	1-1/2"	1-1/2"	---	SEE DETAIL D4 ON P5.0
P-4C	STAINLESS STEEL COUNTER SINK	1/2"	1/2"	1-1/2"	1-1/2"	---	WITH FAUCET SPRAY
P-4D	STAINLESS STEEL COUNTER SINK	1/2"	1/2"	1-1/2"	1-1/2"	---	LESS FAUCET SPRAY
P-4E	STAINLESS STEEL COUNTER SINK RM128-A	1/2"	1/2"	1-1/2"	1-1/2"	---	ACCESSIBLE, WRIST BLADE HANDLES
P-4F	STAINLESS STEEL COUNTER SINK LAUNDRY RM 3005	1/2"	1/2"	1-1/2"	1-1/2"	---	WRIST BLADE HANDLES
P-4G	STAINLESS STEEL SINK, ACTIVITY RM 137	1/2"	1/2"	1-1/2"	1-1/2"	---	DEEP SINK WITH SOLIDS SEPARATOR
P-5A	TRANSFER SHOWER, LESS SEAT	1/2"	1/2"	1-1/2"	2"	---	ACCESSIBLE
P-5B	36X36 SHOWER	1/2"	1/2"	1-1/2"	2"	---	---
P-5C	ROLL IN SHOWER, LESS SEAT	1/2"	1/2"	1-1/2"	2"	---	ACCESSIBLE
P-5D	30x60 SHOWER	1/2"	1/2"	1-1/2"	2"	---	---
P-6	24X24 MOP RECEPTOR	1/2"	1/2"	1-1/2"	3"	---	PROVIDE CHECK VALVES AT WATER INLETS
BFS-1	BOTTLE FILLING STATION	1/2"	---	1-1/2"	1-1/2"	---	---
W	CLOTHES WASHER - DOMESTIC STANDPIPE	1/2"	1/2"	1-1/2"	2"	---	---
FPWH	FROST PROOF WALL HYDRANT	3/4"	---	---	---	---	---
HB	HOSE BIBB	1/2"	---	---	---	---	---
EW-1	EYE WASH/DRENCH HOSE - WALL MOUNTED	1/2"	1/2"	---	---	---	WITH TMV-2, DRAINS TO P-6
FD-1	HEAVY DUTY FLOOR DRAIN	1/2"	---	2"	4"	---	SEE 221119 FOR FLOOR DRAIN TYPES
FD-2	HEAVY DUTY FLOOR DRAIN	1/2"	---	1-1/2"	3"	---	SEE 221119 FOR FLOOR DRAIN TYPES
FD-3	LIGHT DUTY FLOOR DRAIN	1/2"	---	1-1/2"	2"	---	SEE 221119 FOR FLOOR DRAIN TYPES
FS-1	FLOOR SINK	1/2"	---	2"	3"	---	SEE 221119 FOR FLOOR DRAIN TYPES
RD-1	LARGE AREA ROOF DRAIN	---	---	---	---	---	SEE P1.3C FOR SIZES
RD-2	SMALL AREA ROOF DRAIN	---	---	---	---	---	SEE P1.3C FOR SIZES
RD-3	LARGE AREA ROOF DRAIN WITH PROMENADE TOP	---	---	---	---	---	SEE P1.1A FOR SIZES
RD-4	SMALL AREA ROOF DRAIN WITH PROMENADE TOP	---	---	---	---	---	SEE P1.1A FOR SIZES
RD-5	SCUPPER ROOF DRAIN	---	---	---	---	---	SEE P1.1C FOR SIZES
RD-6	COMBINATION PRIMARY AND OVERFLOW ROOF DRAIN	---	---	---	---	---	SEE P1.1B FOR SIZES
RD-7	RAIN SINK - RETRO	---	---	---	---	---	---
FIXTURES BELOW PROVIDED BY OTHERS, ROUGH-INS BY PLUMBING CONTRACTOR							
P-7	SALON SHAMPOO SINK	1/2"	1/2"	1-1/2"	1-1/2"	---	PROVIDE HAIR INTERCEPTOR UNDER COUNTER
3	SODA SYSTEM	1/2"	---	1-1/2"	2"	---	FLOOR SINK INDIRECT WASTE
13	RANGE	---	---	---	3/4"	80 MBH	---
15	OVEN	---	---	---	3/4"	80 MBH	---
16	RANGE	---	---	---	3/4"	80 MBH	---
17	CHARBROILER	---	---	---	3/4"	75 MBH	---
21	WORK COUNTER WITH SINK	1/2"	1/2"	1-1/2"	1-1/2"	---	---
27	DROP IN SODA AND ICE DISPENSER	1/2"	---	1-1/2"	2"	---	(2) 3/4" INDIRECT WASTE TO FLOOR SINK
30	REFRIGERATED DISPLAY CASE	---	---	1-1/2"	2"	---	1" INDIRECT WASTE TO FLOOR SINK
39	WATER AND ICE DISPENSER WITH FILTER	1/4"	---	---	---	---	---
42	UNDER COUNTER ICE MAKER & WATER FILTER	3/8"	---	1-1/2"	2"	---	3/8" INDIRECT WASTE TO FLOOR SINK
44	UNDER COUNTER GLASS WASHER	---	1/2"	---	---	---	1" INDIRECT WASTE TO FLOOR SINK

TAG	SERVES	MAKE & MODEL	TYPE	GPM	HEAD	ELECTRICAL		SUMP	NOTES
						MOTOR HP	VOLTS/PH (60 Hz.)		
RCP-1	DHW RECIRC	TACO IL 0013	IN LINE	8	27	1/6	115/1	---	NOTE 1, 3/4" X 3/4" INLET/DISCH
SP-1	ELEV SUMP	ZOELLER MODEL V162	SUBMERSIBLE	74	37	0.5	115/1	SEE S1.0C	NOTE 2, NOTE 3.

NOTES:
 1. POWER SUPPLY TO STARTER/CONTACTOR AND DISC SWITCH BY DIV 26. WIRE PUMP IN SERIES WITH AN IMMERSION AQUASTAT, WIRING FROM SWITCH TO AQUASTAT AND PUMP BY DIV 23.
 2. PLUG CONNECTIONS, COORDINATE LOCATION OF GFI OUTLETS.
 3. PROVIDE OIL SMART SYSTEM

TAG	MFR / MODEL	ENT. CW °F	TEMP RISE DELTA °F	ENTERING BOILER WATER °F	LEAVING BOILER WATER °F	BOILER WATER DELTA-T	BOILER GPM	BOILER WATER HEAD LOSS	BOILER HEAT INPUT BTUH	BOILER HWS TEMP TO DHW	RECOVERY RATE, GPH	STORAGE CAPACITY GALLONS	COLD WATER INLET	HOT WATER OUTLET	BOILER SUPPLY/RETURN CONN	HEIGHT	DIA	WEIGHT SHIP'G
DHW-1	MESSMANN 300V	40	100	158	132	26	13.2	3.4'	171,600	176 °F	203	119	1-1/4"	1-1/4"	1-1/4"	89"	36"	245 LB.
DHW-2	MESSMANN 300V	40	100	158	132	26	13.2	3.4'	171,600	176 °F	203	119	1-1/4"	1-1/4"	1-1/4"	89"	36"	245 LB.

MARK	MANUFACTURER	SYSTEM FLOW	NO PUMPS	FLOW EA. PUMP GPM	BOOST EA. PUMP FT	TEMP °F	PRESSURE TRANSMITTER SETPOINT PSIG	SKID-MOUNTED TANK	ELECTRICAL MOTOR						
									POWER EACH	PHASE	VOLT	MAX RPM	DISCONNECT SWITCH	STARTERS	REMARKS
BP-1	CANARIIS DS-150-35	150 GPM	2	75	81	50	65	CANARIIS MODEL FXA500, ASME, 132 GAL.	(2) @ 3 HP	3	208	1750	FURN. W/PUMP	FURN. W/PUMP	BOTH PUMPS CAN RUN

A1 PLUMBING SCHEDULES

NOT TO SCALE

N:\Projects\2015\1011\1018 - Park Danforth\1018 - Park Danforth\1018.dwg - REVIT 2015\1018.rvt
 06/20/15 9:16:24 AM