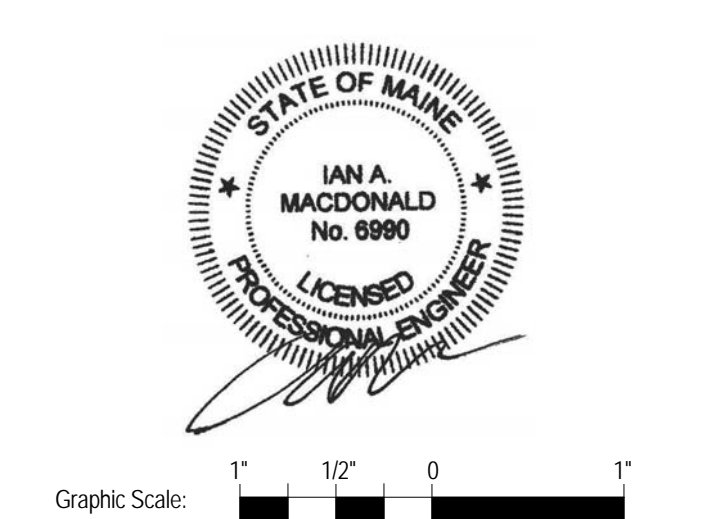


160 Veranda Street  
 Portland, Maine 04103  
 T: 207.221.2240  
 F: 207.221.2246  
 Web: www.allied-eng.com

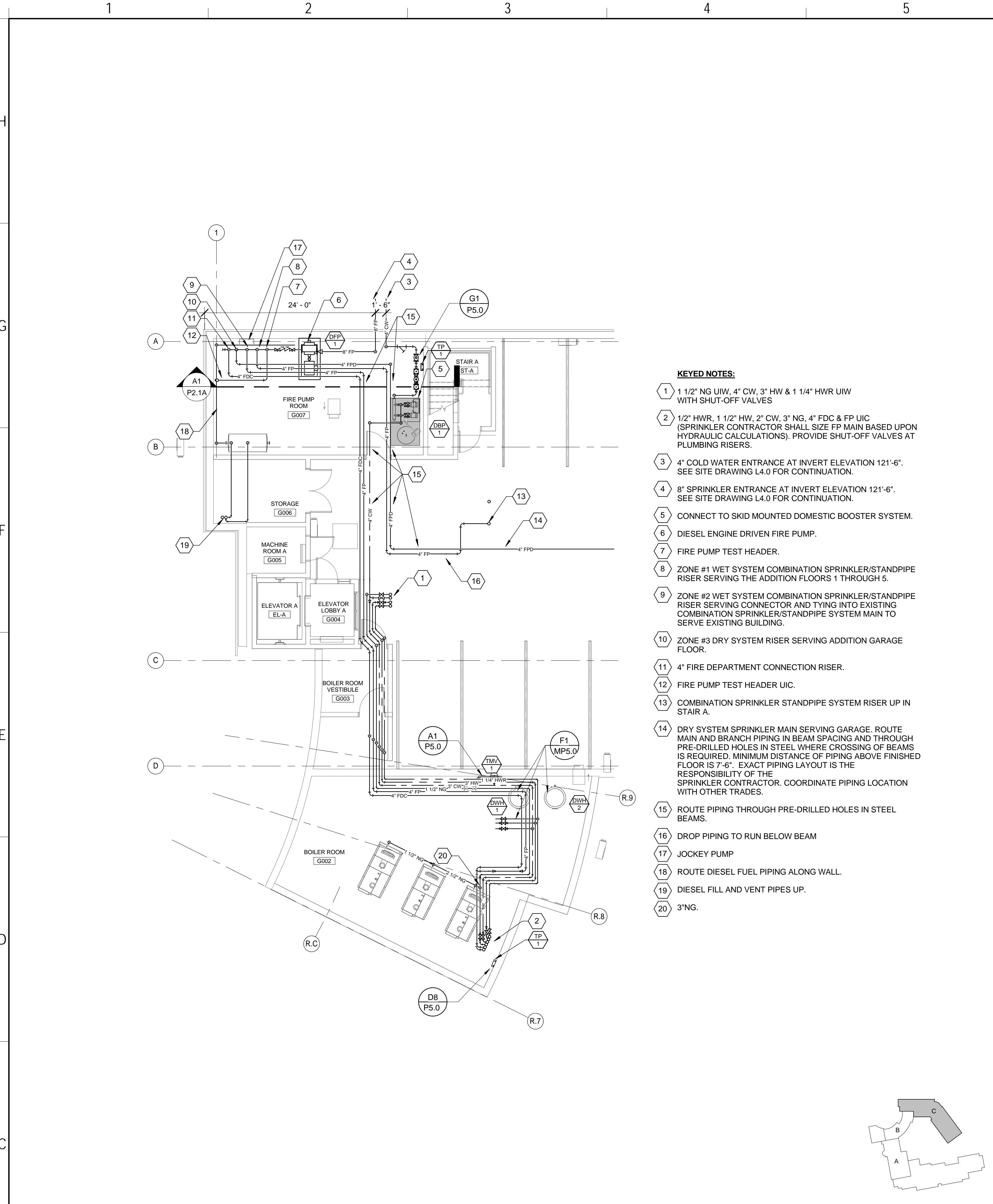


Graphic Scale: 1" = 10' 0"

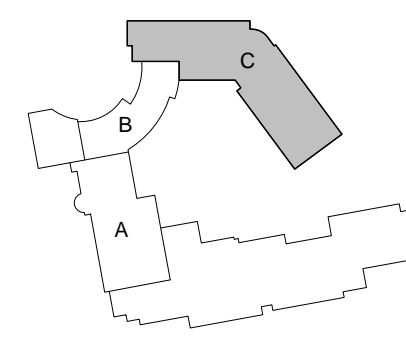
The Park Danforth

777 Stevens Ave, Portland, ME, 04103

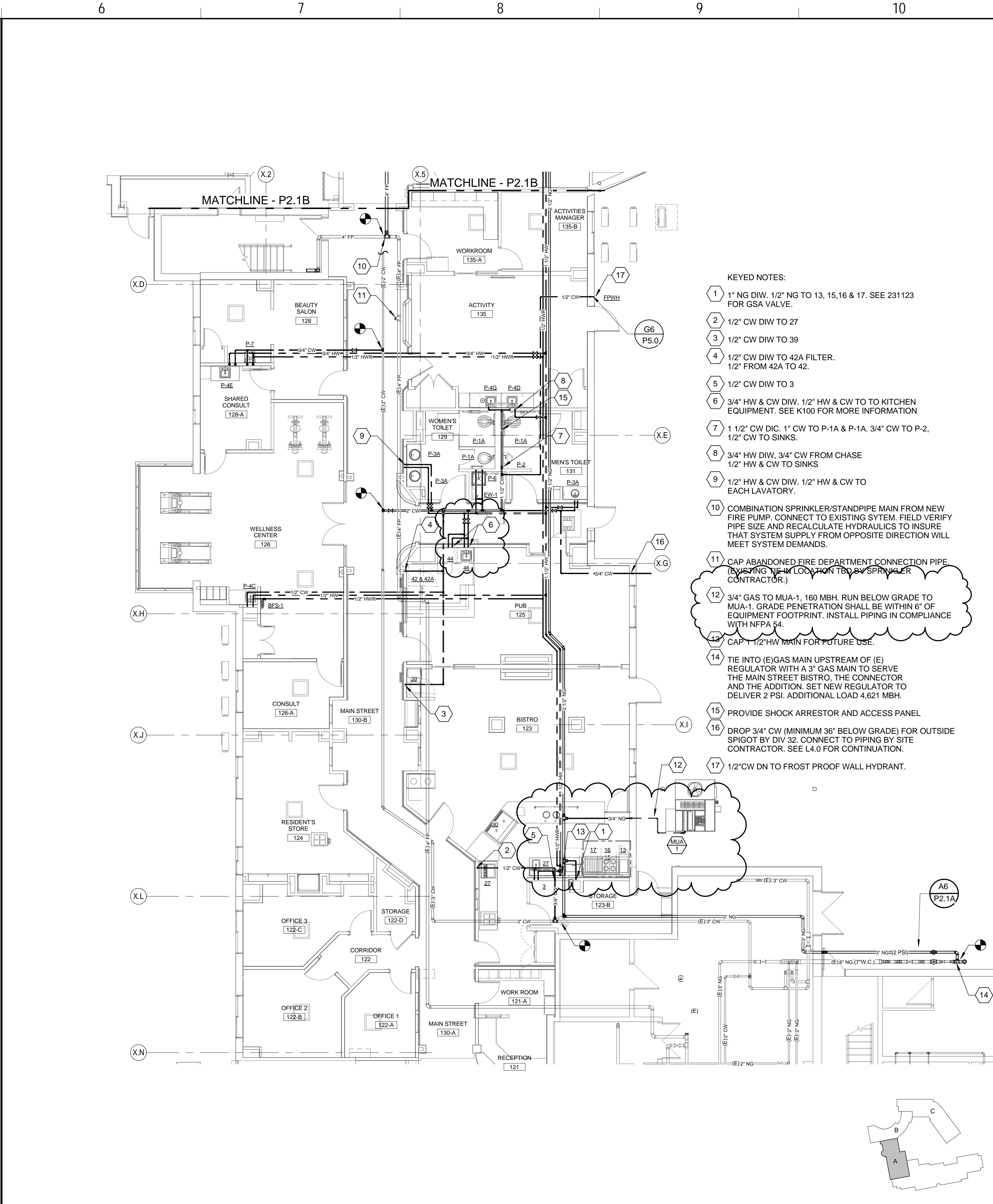
NO.	DESCRIPTION	DATE
1	Addendum No 2	2015-06-25



- KEYED NOTES:**
- 1 1/2" NG UW, 4" CW, 3" HW & 1 1/4" HWR UW WITH SHUT-OFF VALVES
  - 2 1/2" HWR, 1 1/2" HW, 2" CW, 3" NG, 4" FDC & FP UIC (SPRINKLER CONTRACTOR SHALL SIZE FP MAIN BASED UPON HYDRAULIC CALCULATIONS). PROVIDE SHUT-OFF VALVES AT PLUMBING RISERS.
  - 3 4" COLD WATER ENTRANCE AT INVERT ELEVATION 121'-6". SEE SITE DRAWING L4.0 FOR CONTINUATION.
  - 4 8" SPRINKLER ENTRANCE AT INVERT ELEVATION 121'-6". SEE SITE DRAWING L4.0 FOR CONTINUATION.
  - 5 CONNECT TO SKID MOUNTED DOMESTIC BOOSTER SYSTEM.
  - 6 DIESEL ENGINE DRIVEN FIRE PUMP.
  - 7 FIRE PUMP TEST HEADER.
  - 8 ZONE #1 WET SYSTEM COMBINATION SPRINKLER/STANDPIPE RISER SERVING THE ADDITION FLOORS 1 THROUGH 5.
  - 9 ZONE #2 WET SYSTEM COMBINATION SPRINKLER/STANDPIPE RISER SERVING CONNECTOR AND TYING INTO EXISTING COMBINATION SPRINKLER/STANDPIPE SYSTEM MAIN TO SERVE EXISTING BUILDING.
  - 10 ZONE #3 DRY SYSTEM RISER SERVING ADDITION GARAGE FLOOR.
  - 11 4" FIRE DEPARTMENT CONNECTION RISER.
  - 12 FIRE PUMP TEST HEADER UIC.
  - 13 COMBINATION SPRINKLER STANDPIPE SYSTEM RISER UP IN STAIR A.
  - 14 DRY SYSTEM SPRINKLER MAIN SERVING GARAGE. ROUTE MAIN AND BRANCH PIPING IN BEAM SPACING AND THROUGH PRE-DRILLED HOLES IN STEEL WHERE CROSSING OF BEAMS IS REQUIRED. MINIMUM DISTANCE OF PIPING ABOVE FINISHED FLOOR IS 7'-6". EXACT PIPING LAYOUT IS THE RESPONSIBILITY OF THE SPRINKLER CONTRACTOR. COORDINATE PIPING LOCATION WITH OTHER TRADES.
  - 15 ROUTE PIPING THROUGH PRE-DRILLED HOLES IN STEEL BEAMS.
  - 16 DROP PIPING TO RUN BELOW BEAM
  - 17 JOCKEY PUMP
  - 18 ROUTE DIESEL FUEL PIPING ALONG WALL.
  - 19 DIESEL FILL AND VENT PIPES UP.
  - 20 3"NG.

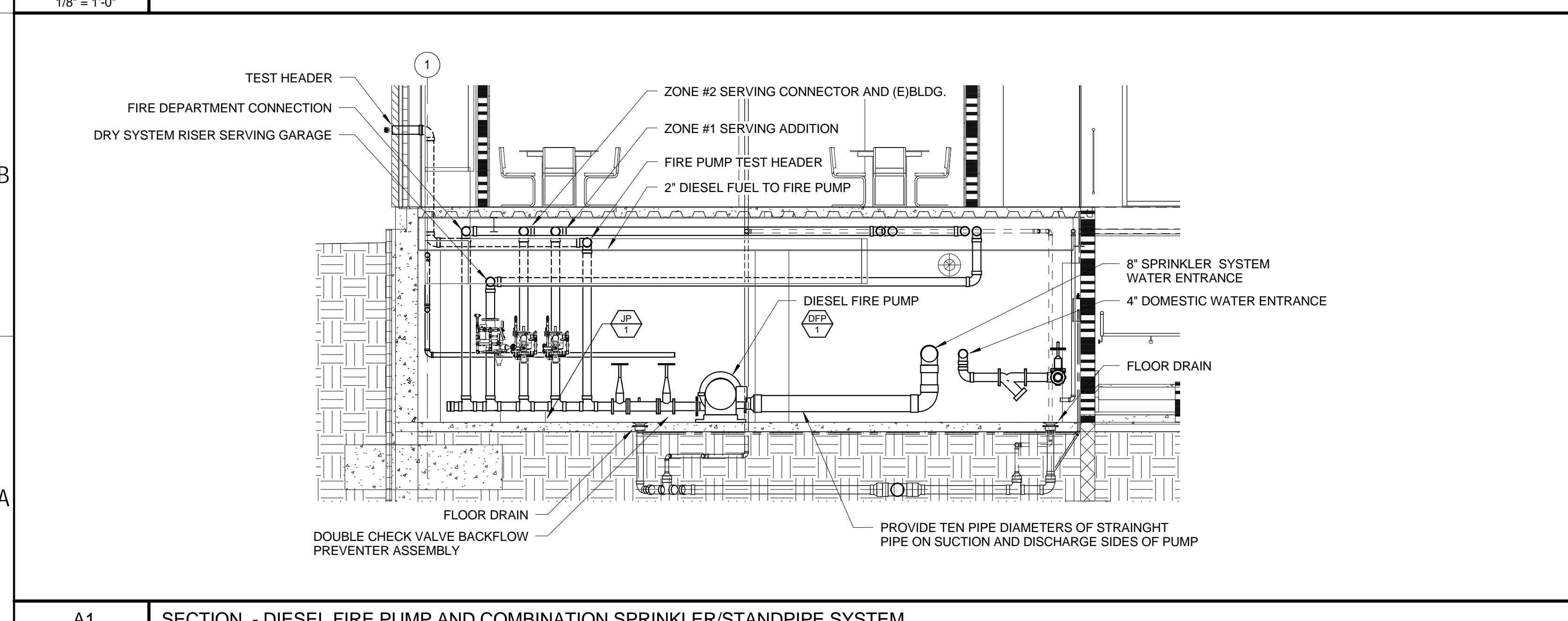


C1 PLUMBING PART PLAN - SUPPLY - GARAGE LEVEL - NEW BUILDING  
 1/8" = 1'-0"

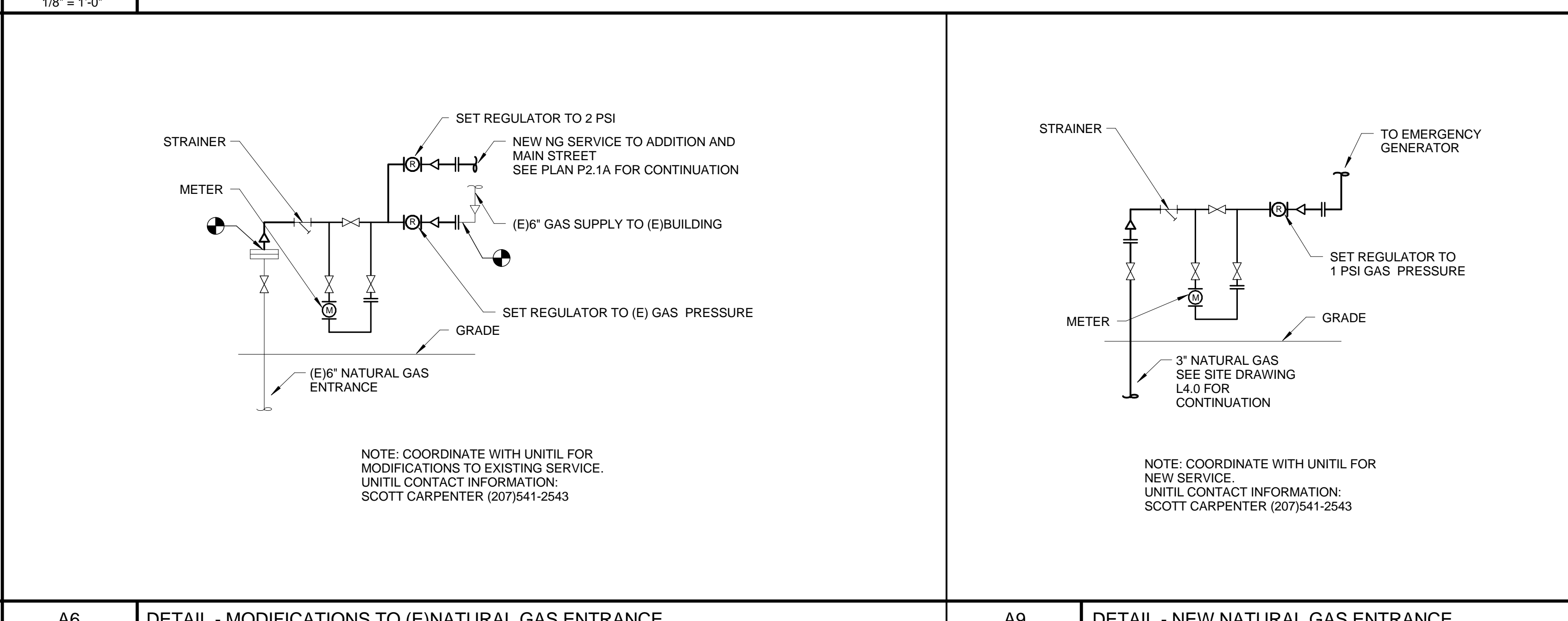


- KEYED NOTES:**
- 1 1" NG DIW, 1/2" NG TO 13, 15, 16 & 17. SEE 231123 FOR GSA VALVE.
  - 2 1/2" CW DIW TO 29
  - 3 1/2" CW DIW TO 37
  - 4 1/2" CW DIW TO 42A FILTER. 1/2" FROM 42A TO 42.
  - 5 1/2" CW DIW TO 3
  - 6 3/4" HW & CW DIW. 1/2" HW & CW TO TO KITCHEN EQUIPMENT. SEE K100 FOR MORE INFORMATION
  - 7 1 1/2" CW DIC. 1" CW TO P-1A & P-1A. 3/4" CW TO P-2. 1/2" CW TO SINKS.
  - 8 3/4" HW DIW, 3/4" CW FROM CHASE 1/2" HW & CW TO SINKS
  - 9 1/2" HW & CW DIW. 1/2" HW & CW TO EACH LAVATORY.
  - 10 COMBINATION SPRINKLER/STANDPIPE MAIN FROM NEW FIRE PUMP. CONNECT TO EXISTING SYSTEM. FIELD VERIFY PIPE SIZE AND RECALCULATE HYDRAULICS TO INSURE THAT SYSTEM SUPPLY FROM OPPOSITE DIRECTION WILL MEET SYSTEM DEMANDS.
  - 11 CAP ABANDONED FIRE DEPARTMENT CONNECTION PIPE (VERIFY THE LOCATION TO BY SPRINKLER CONTRACTOR.)
  - 12 3/4" GAS TO MJA-1, 160 MBH. RUN BELOW GRADE TO MJA-1. GRADE PENETRATION SHALL BE WITHIN 6" OF EQUIPMENT FOOTPRINT. INSTALL PIPING IN COMPLIANCE WITH NFPA 54.
  - 13 CAP 1 1/2" HW MAIN FOR FUTURE USE.
  - 14 TIE INTO (E) GAS MAIN UPSTREAM OF (E) REGULATOR WITH A 3" GAS MAIN TO SERVE THE MAIN STREET BISTRO. THE CONNECTOR AND THE ADDITION. SET NEW REGULATOR TO DELIVER 2 PSI. ADDITIONAL LOAD 4,621 MBH.
  - 15 PROVIDE SHOCK ARRESTOR AND ACCESS PANEL
  - 16 DROP 3/4" CW (MINIMUM 36" BELOW GRADE) FOR OUTSIDE SPIGOT BY DIV 32. CONNECT TO PIPING BY SITE CONTRACTOR. SEE L4.0 FOR CONTINUATION.
  - 17 1/2" CW DN TO FROST PROOF WALL HYDRANT.

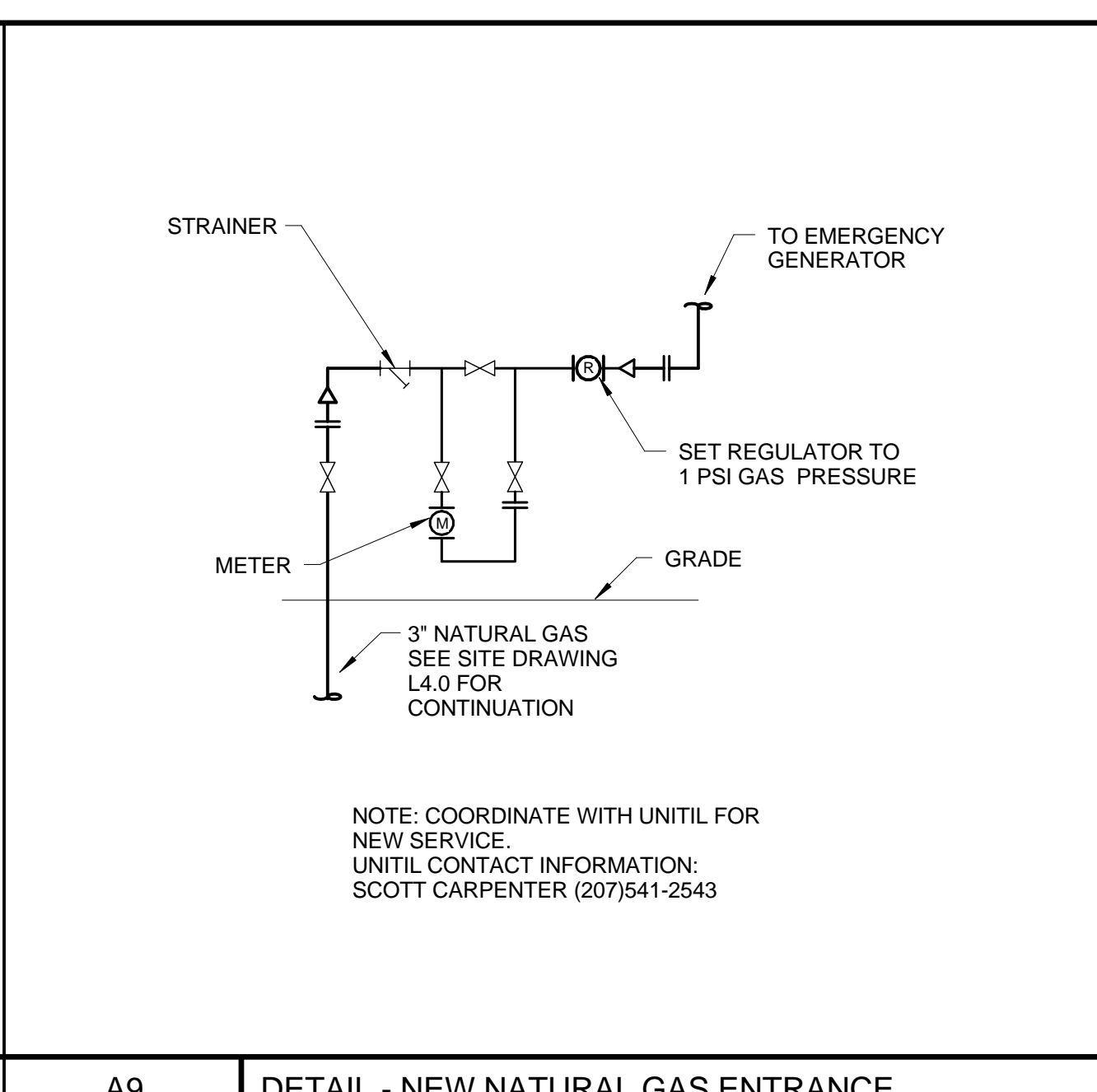
C6 PLUMBING PART PLAN - SUPPLY - LEVEL 1 - MAIN STREET  
 1/8" = 1'-0"



A1 SECTION - DIESEL FIRE PUMP AND COMBINATION SPRINKLER/STANDPIPE SYSTEM  
 1/4" = 1'-0"



A6 DETAIL - MODIFICATIONS TO (E) NATURAL GAS ENTRANCE  
 NO SCALE



A9 DETAIL - NEW NATURAL GAS ENTRANCE  
 NO SCALE

CONTENT:  
 PLUMBING - SUPPLY  
 GARAGE LEVEL - NEW BUILDING  
 AND LEVEL 1 - MAIN STREET

DRAWN BY: SGH

PROJECT NO: 2015-06-25

DATE: 06/25/2015

REVISED:

SCALE: AS NOTED

**P2.1A**

Project Phase  
 100% CONSTRUCTION DOCUMENTS

COPYRIGHT © 2014 BY LAVALLEE BRENSINGER PROFESSIONAL ASSOCIATION. ALL RIGHTS RESERVED. NO REPRODUCTION WITHOUT PERMISSION.

02/20/15 9:14:52 AM N:\Projects\2015\1010108 - Park Danforth\1010108 - Revit\2015\1010108.rvt