

160 Veranda Street  
 Portland, Maine 04103  
 T: 207.221.2240  
 F: 207.221.2246  
 Web: www.allied-eng.com

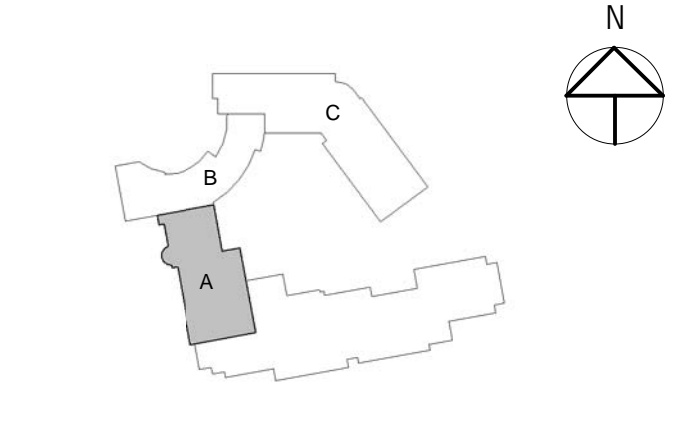


Graphic Scale: 1" = 10' 0"

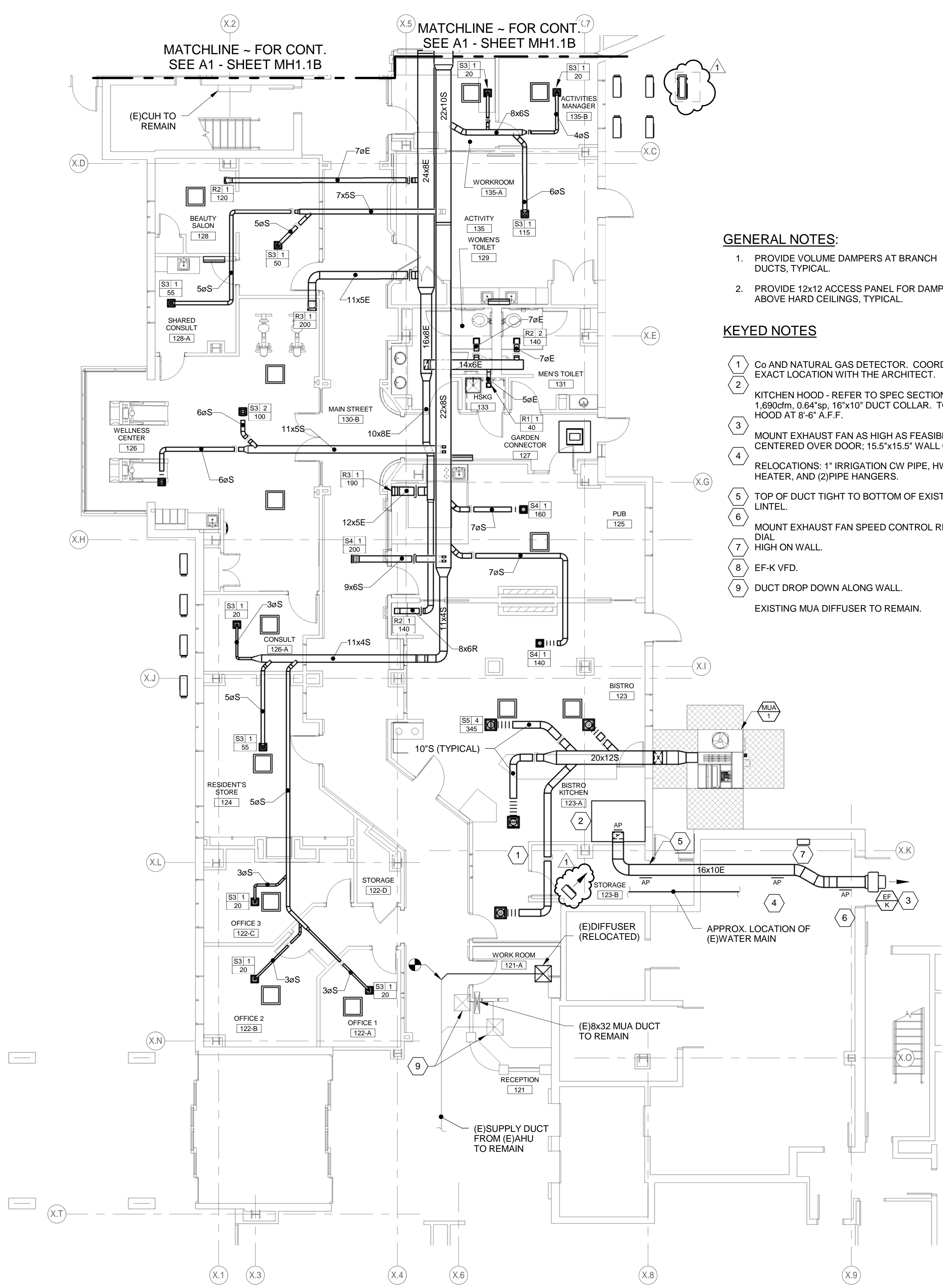
The Park Danforth

777 Stevens Ave, Portland, ME, 04103

NO.	DESCRIPTION	DATE
1	Addendum No. 2	2015-06-25



CONTENT: MECHANICAL PART PLAN - LEVEL 1 - MAIN STREET	
DRAWN BY:	REW
PROJECT NO.:	-
DATE:	06/05/2015
REVISED:	-
SCALE:	AS NOTED
<b>MH1.1A</b>	
Project Phase 100% CONSTRUCTION DOCUMENTS	
<small>COPYRIGHT © 2014 BY LAVALLEE BRENSINGER PROFESSIONAL ASSOCIATION. ALL RIGHTS RESERVED. NO REPRODUCTION WITHOUT PERMISSION.</small>	



**GENERAL NOTES:**

1. PROVIDE VOLUME DAMPERS AT BRANCH DUCTS, TYPICAL.
2. PROVIDE 12x12 ACCESS PANEL FOR DAMPERS ABOVE HARD CEILINGS, TYPICAL.

**KEYED NOTES**

- 1 Co AND NATURAL GAS DETECTOR. COORDINATE EXACT LOCATION WITH THE ARCHITECT.
- 2 KITCHEN HOOD - REFER TO SPEC SECTION 233113. 1,690cfm, 0.64" sp. 16"x10" DUCT COLLAR. TOP OF HOOD AT 8'-6" A.F.F.
- 3 MOUNT EXHAUST FAN AS HIGH AS FEASIBLE. CENTERED OVER DOOR. 15.5"x15.5" WALL OPENING.
- 4 RELOCATIONS: 1" IRRIGATION CW PIPE, HW UNIT HEATER, AND (2) PIPE HANGERS.
- 5 TOP OF DUCT TIGHT TO BOTTOM OF EXISTING LINTEL.
- 6 MOUNT EXHAUST FAN SPEED CONTROL REMOTE DIAL HIGH ON WALL.
- 7 EF-K VFD.
- 8 DUCT DROP DOWN ALONG WALL.
- 9 EXISTING MUA DIFFUSER TO REMAIN.

6/29/2015 8:51:13 AM N:\Projects\2015\161-0108 - Park Danforth\100 Drawing Files - REV\17 2015\161-0108.rvt