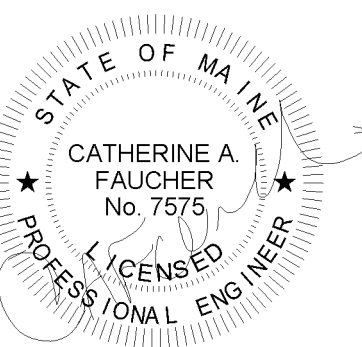


160 Veranda Street
 Portland, Maine 04103
 T: 207.231.2349
 F: 207.231.2346
 Web: www.allied-eng.com

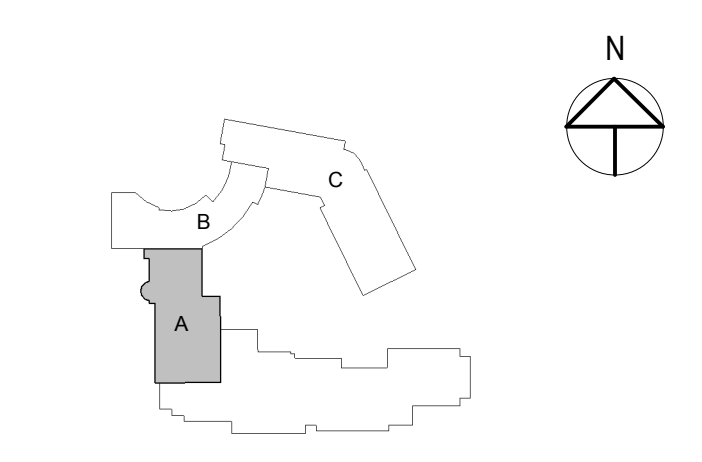


Graphic Scale: 1" = 0' 10" 0' 11" 1"

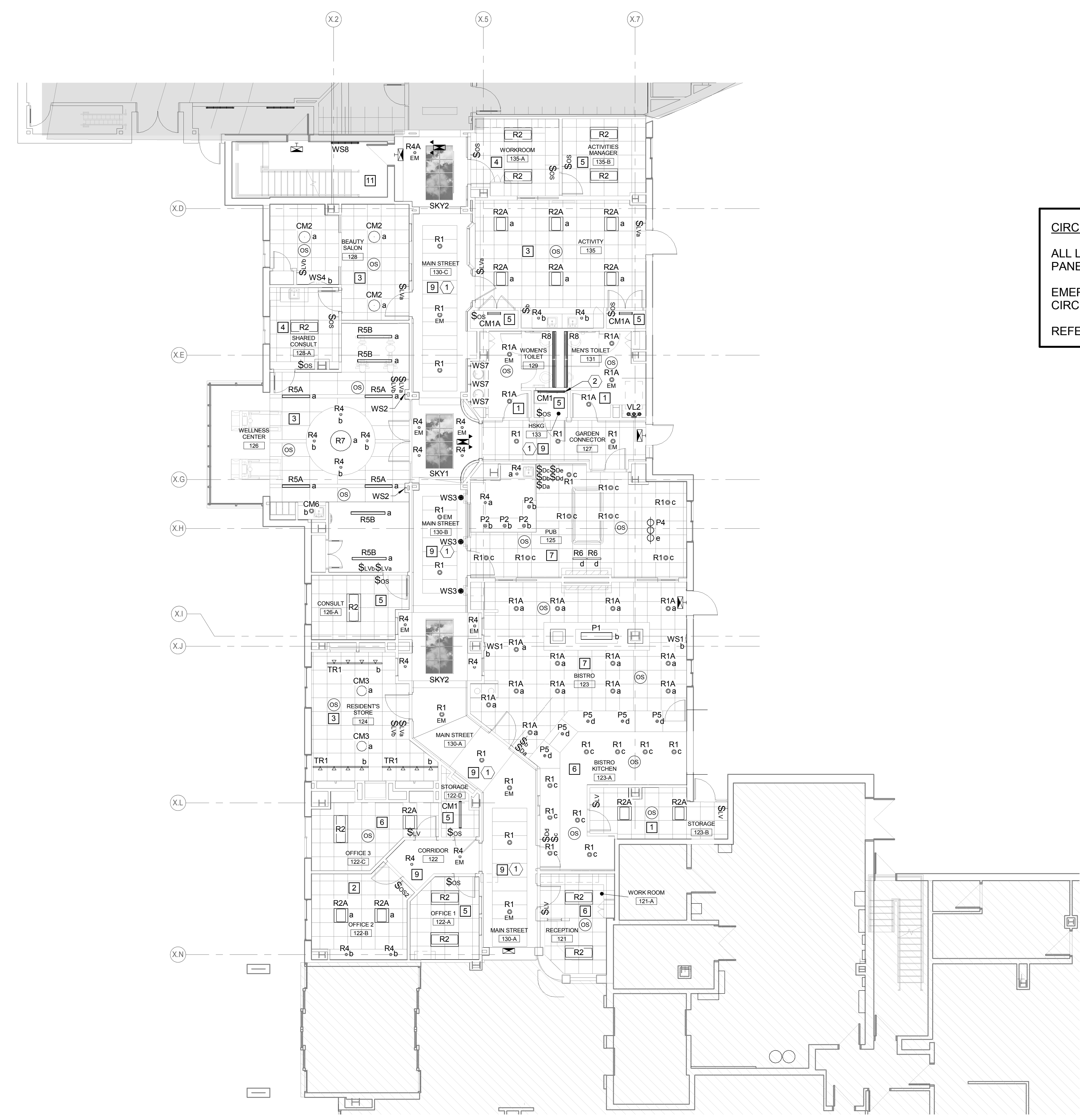
The Park Danforth

777 Stevens Ave, Portland, ME, 04103

NO.	DESCRIPTION	DATE
1	Addendum No 2	2015-06-25



CONTENT:	
LEVEL 1 - MAIN STREET LIGHTING PLAN	
DRAWN BY:	Author
PROJECT NO:	-
DATE:	06/05/2015
REVISED:	
SCALE:	AS NOTED
EL1.1A	
Project Phase	
100% CONSTRUCTION DOCUMENTS	
COPYRIGHT © 2014 BY LAVALLEE BRENSINGER PROFESSIONAL ASSOCIATION. ALL RIGHTS RESERVED. NO REPRODUCTION WITHOUT PERMISSION.	



CIRCUITING NOTES
 ALL LIGHTING ON THIS SHEET SHALL BE CIRCUITED TO PANEL MN1 UNO.
 EMERGENCY LIGHTING ON THIS SHEET SHALL BE CIRCUITED TO PANEL GE1.
 REFER TO PANEL SCHEDULES

ENTIRE SHEET ISSUED

- ① LIGHTING SHALL BE CIRCUITED TO PANEL GN1. REFER TO PANEL SCHEDULES.
- ② WALL MOUNT LIGHT FIXTURE AT 7'-6"

- 1 LIGHTING CONTROL SHALL BE AUTO ON/AUTO OFF CEILING SENSOR(S) (NO DETAIL).
- 2 LIGHTING CONTROL SHALL BE DUAL-CIRCUIT SWITCHING WITH 2-BUTTON OCCUPANCY SENSOR - SEE DETAIL A1/EL5.1
- 3 LIGHTING CONTROL SHALL BE DUAL-CIRCUIT SWITCHING WITH AUTO OFF VIA CEILING SENSOR(S) - SEE DETAIL A3/EL5.1
- 4 LIGHTING CONTROL SHALL BE AUTO ON/AUTO OFF WALL SENSOR SWITCH WIRED FOR 3-WAY OPERATION - SEE DETAIL A3/EL5.1
- 5 LIGHTING CONTROL SHALL BE MANUAL ON/AUTO OFF WALL SENSOR SWITCH - SEE DETAIL B4/EL5.1
- 6 LIGHTING CONTROL SHALL BE MANUAL ON/AUTO OFF VIA CEILING SENSOR(S) - SEE DETAIL D1/EL5.1
- 7 LIGHTING CONTROL SHALL BE AUTO ON/AUTO OFF VIA CEILING SENSORS WITH 0-10V DIMMING CONNECTED TO LOAD SIDE OF OCCUPANCY SENSOR RELAY - SEE DETAIL B1/EL5.1
- 8 EMERGENCY SHUNT RELAY CONNECTION DIAGRAM - SEE DETAIL D4/EL5.1
- 9 LIGHTING CONTROLLED FROM LIGHTING CONTROL PANEL - REFER TO LIGHTING CONTROL PANEL SCHEDULES. EMERGENCY LIGHTING SHALL OPERATE CONTINUOUSLY, UNO.
- 10 LIGHTING CONTROL SHALL BE MANUAL ON/MANUAL OFF VIA WALL SWITCHES.
- 11 STAIRWAY LIGHTING SHALL OPERATE CONTINUOUSLY
- 12 PROVIDE EMERGENCY SHUNT RELAY TO BYPASS LIGHTING CONTROLS AND FORCE EMERGENCY LIGHTING ON UPON LOSS OF NORMAL POWER - SEE DETAIL D4/EL5.1.
- 13 LIGHTING SHALL OPERATE AT 50% OUTPUT WHEN SPACE IS UNOCCUPIED AND SHALL BRIGHTEN TO FULL OUTPUT UPON ACTIVATION OF FIXTURE-MOUNTED DIMMING OCCUPANCY SENSORS.
- 14 LIGHTING SHALL OPERATE CONTINUOUSLY

6/29/2015 10:08:13 AM N:\Projects\2014\14018 - Park Danforth\0 Drawing Files - REV\1 2015\14018E.dwg