

PLANT SCHEDULE

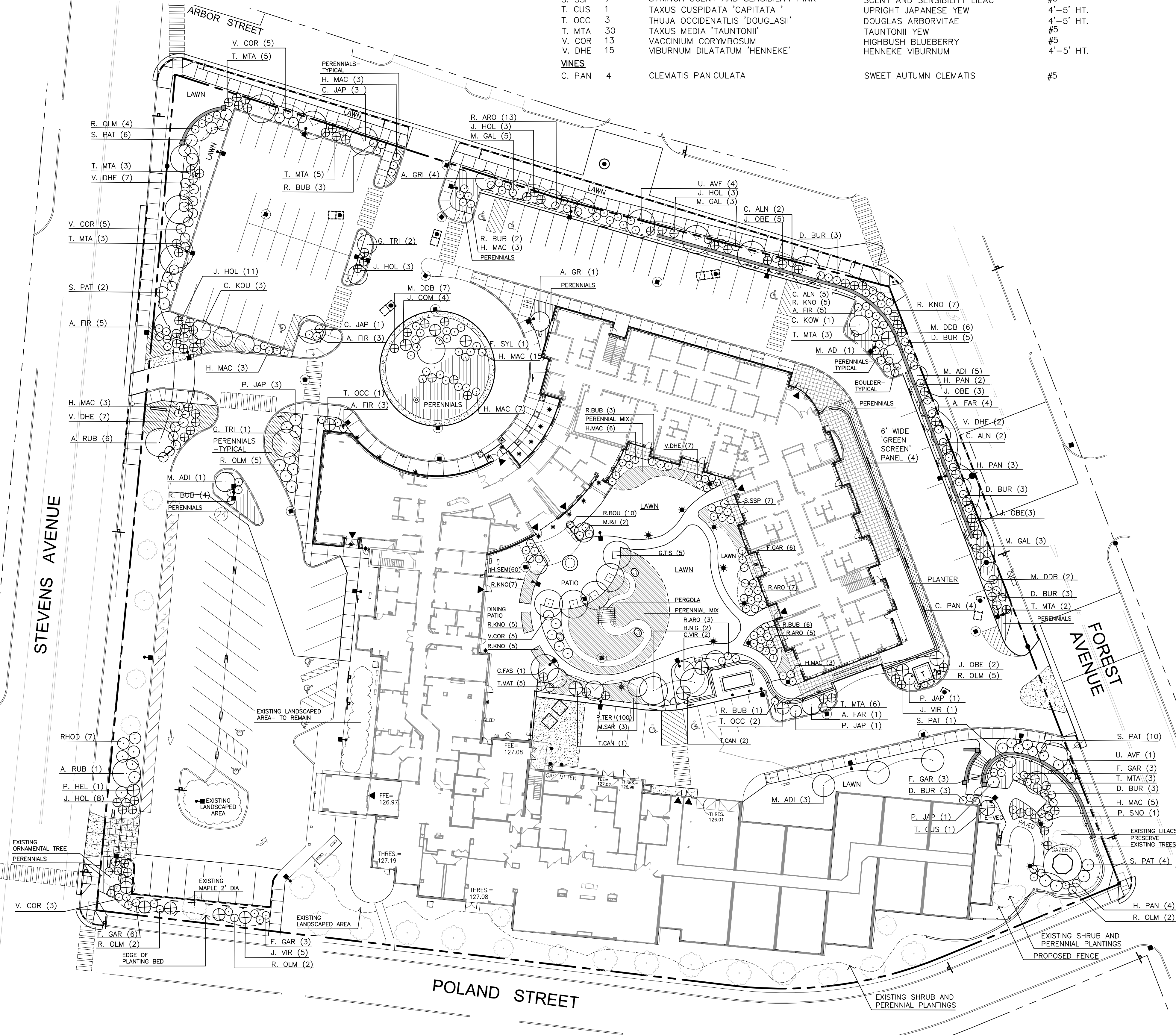
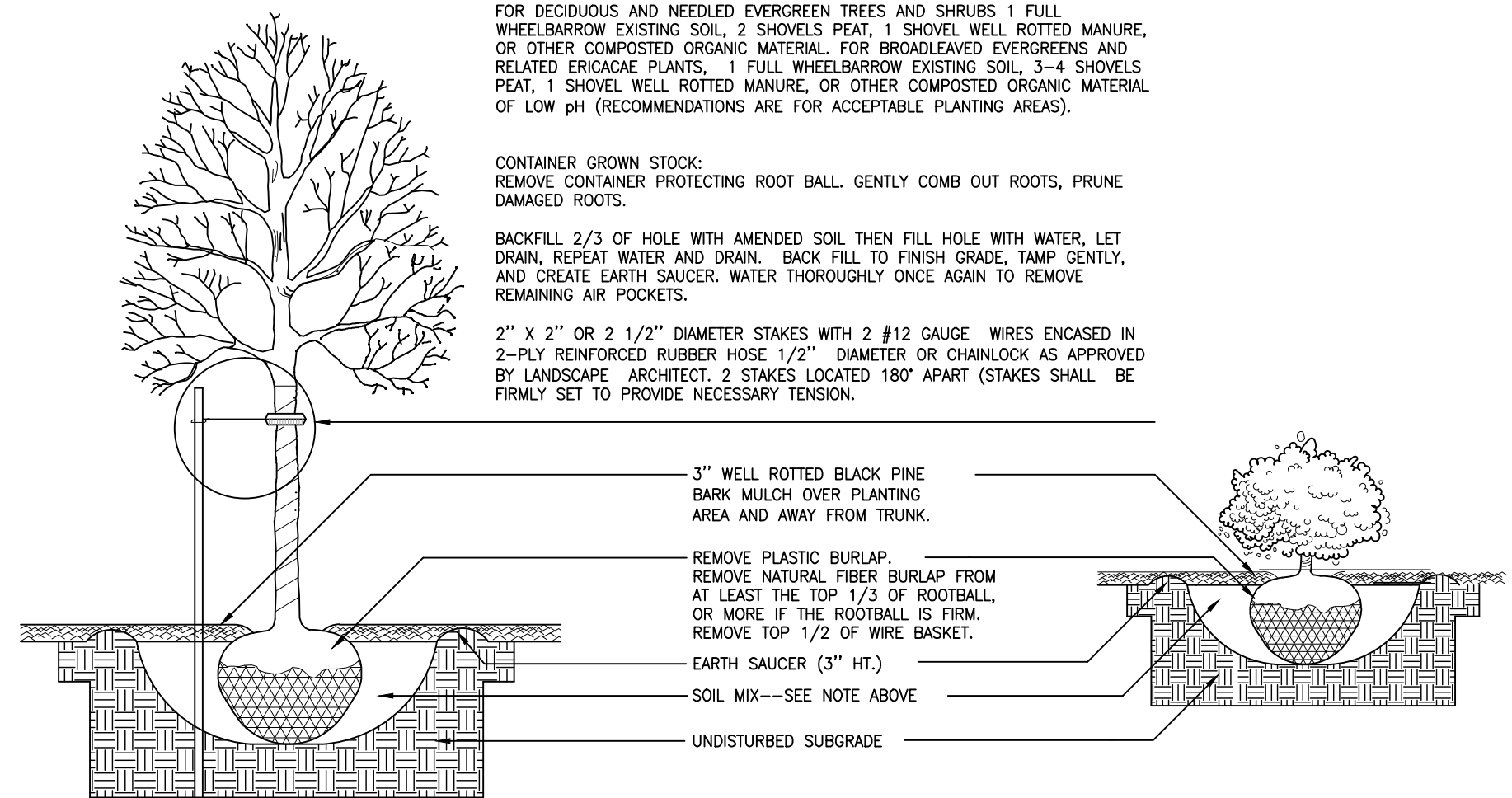
KEY	QTY	BOTANICAL NAME	COMMON NAME	SIZE
TREES				
A. FAR	5	ACER FREEMANII 'ARMSTRONG'	ARMSTRONG MAPLE	2.5" CAL
A. GRI	5	ACER GRISEUM	PAPERBARK MAPLE	2.5" CAL
A. RUB	7	ACER RUBRUM 'KARPICK'	'KARPICK' RED MAPLE	2.5" CAL
B. NIG	2	BETULA NIGRA	HERITAGE RIVER BIRCH	12'-14" CLUMP
C. FAS	1	CARPINUS 'FASTIGIATE'	EUROPEAN HORN BEAM	2" CAL
C. JAP	5	CERCIDIPHYLLUM JAPONICUM	KATSURA TREE	2.5" CAL
C. KOU	3	CORNUS KOUSA	KOUSA DOGWOOD	2.5" CAL
C. KOW	1	CORNUS KOUSA 'WOLF EYES'	VARIEGATED KOUSA DOGWOOD	2" CAL
C. VIR	2	CRATAGUS VIRIDIS 'WINTER KING'	WINTER KING HAWTHORNE	1.75" CAL
F. SYL	1	FAGUS SYLVATICA 'TRICOLOR'	TRICOLOR BEECH	2.5" CAL
G. TIS	5	GLEDITSIA TRIACANTHOS 'INERMIS'	HONEYLOCUST 'STREET KEEPER'	2" CAL
G. TRI	3	GLEDITSIA TRIACANTHOS VAR. 'INERMIS 'HALKA'	THORNLESS HONEYLOCUST	2" CAL
M. ADI	12	MALUS 'ADIRONDACK'	ADIRONDACK FLOWERING CRAB	2" CAL
M. RJ	4	MALUS 'RED JADE'	RED JADE FLOWERING CRAB	1.5" CAL
M. SAR	3	MALUS 'CANDYMINT SARGENT'	CANDYMINT SARGENT FLOWERING CRAB	1.5" CAL
P. SNO	1	PRUNUS SNOFOZAM	SNOW FOUNTAIN WEEPING CHERRY	2" CAL
T. CAN	3	TSUGA CANADENSIS	HEMLOCK	5" HT.
U. AVF	5	ULMUS AMERICANA 'VALLEY FORGE'	VALLEY FORGE ELM	2.5" CAL

KEY	QTY	BOTANICAL NAME	COMMON NAME	SIZE
SHRUBS				
A. FIR	16	AZALEA 'FIRESTAR'	EVERGREEN FIRESTAR AZALEA	#5
C. ALN	9	CLETHRA ALNIFOLIA 'SIXTEEN CANDLES'	SIXTEEN CANDLES SUMMERSWEET	#5
D. BUR	18	DAPHNE BURKWOODII 'CAROL MACKIE'	CAROL MACKIE DAPHNE	#5
F. GAR	21	FOTHERGILLA GARDENII	DWARF BOTTLEBRUSH	#5
H. MAC	41	HYDRANGEA MACROPHYLLA 'ENDLESS SUMMER'	ENDLESS SUMMER HYDRANGEA	#5
H. PAN	9	HYDRANGEA PANICULATA 'QUICKFIRE'	QUICKFIRE HYDRANGEA	#5
J. COM	4	JUNIPER COMMUNIS 'REPANDA'	REPANDA JUNIPER	#5
J. HOL	25	JUNIPER 'HOLGER'	HOLGER JUNIPER	#5
J. OBE	15	JUNIPER CHINESIS 'OBELISK'	OBELISK JUNIPER	#5
J. VIR	6	JUNIPER VIRGINIANA 'GREY OWL'	GREY OWL JUNIPER	#5
M. DDB	18	MICROBIOTA DECUSSATA 'DREW'S BLUE'	DREW'S BLUE CARPET CYPRESS	#5
M. GAL	11	MYRICA GALE	SWEETGALE	#5
P. JAP	13	PIERIS JAPONICA 'MT FIRE'	MT FIRE ANDROMEDA	#5
P. TER	100	PACHYSANDRA TERMANALIS	PACHYSANDRA	#3
R. ARO	13	RHUS AROMATICA 'LOW GRO'	LOW-GRO SUMAC	#5
R. BOU	10	RHODODENDRON 'BOULE DE NEIGE'	'BOULE DE NEIGE' RHODODENDRON	#5
R. BUB	10	RHODODENDRON 'BUBBLEGUM'	BUBBLEGUM RHODODENDRON	#5
R. KNO	12	RHODODENDRON 'KNOCK OUT'	KNOCK OUT RHODODENDRON	#5
R. OLM	18	RHODODENDRON 'OLGA MEZITT'	OLGA MEZITT RHODODENDRON	#5
R. PAT	17	SYRINGA PATULA 'MISS KIM'	MISS KIM LILAC	4'-5" HT.
S. SSP	7	SYRINGA SCENT AND SENSIBILITY PINK	SCENT AND SENSIBILITY LILAC	#3
T. CUS	1	TAXUS CUSPIDATA 'CAPITATA'	UPRIGHT JAPANESE YEW	4'-5" HT.
T. OCC	3	THUJA OCCIDENTALIS 'DOUGLASII'	DOUGLAS ARBORVITAE	4'-5" HT.
T. MTA	30	TAXUS MEDIA 'TAUNTONII'	TAUNTONII YEW	#5
V. COR	13	VACCINIUM CORYMBOSUM	HIGHBUSH BLUEBERRY	#5
V. DHE	15	VIBURNUM DILATATUM 'HENNEKE'	HENNEKE VIBURNUM	4'-5" HT.
VINES				
C. PAN	4	CLEMATIS PANICULATA	SWEET AUTUMN CLEMATIS	#5

GENERAL PLANTING NOTES

- CALL DIG-SAFE (1-888-344-7233) PRIOR TO BEGINNING WORK. THE LANDSCAPE CONTRACTOR IS ADVISED OF THE PRESENCE OF UNDERGROUND UTILITIES AND SHALL VERIFY THE EXISTENCE AND LOCATION OF SAME BEFORE COMMENCING ANY DIGGING OPERATIONS. THE LANDSCAPE CONTRACTOR SHALL REPLACE OR REPAIR UTILITIES PAVING, WALKS, CURBING, ETC. DAMAGED IN PERFORMANCE OF THIS JOB AT NO ADDITIONAL COST TO OWNER.
- CONTRACTOR SHALL THOROUGHLY FAMILIARIZE HIMSELF WITH ALL SITE CONDITIONS PRIOR TO CONSTRUCTION BIDDING.
- DO NOT SCALE FROM DRAWINGS. ANY OMISSIONS IN DIMENSIONING SHALL BE REPORTED IMMEDIATELY TO THE LANDSCAPE ARCHITECT. ANY DISCREPANCIES BETWEEN DRAWINGS, DETAILS, NOTES AND SPECS SHALL BE IMMEDIATELY REPORTED TO THE LANDSCAPE ARCHITECT FOR FURTHER DIRECTION AND RESOLUTION BEFORE ANY ADDITIONAL WORK PROCEEDS.
- PROVIDE SMOOTH TRANSITION WHERE NEW WORK MEETS EXISTING CONDITIONS.
- CONTRACTOR SHALL FURNISH AND PLACE 12 INCHES OF LOAM IN ALL SHRUB BEDS, 30 INCHES IN ALL TREE PITS, AND 6 INCHES UNDER ALL TURF AREAS. THE LANDSCAPE CONTRACTOR SHALL COORDINATE SUBGRADE PREPARATION WITH THE GENERAL CONTRACTOR PRIOR TO PLACING LOAM.
- ALL PLANT MATERIAL INSTALLED SHALL MEET THE SPECIFICATIONS OF "AMERICAN STANDARDS FOR NURSERY STOCK BY THE AMERICAN ASSOCIATION OF NURSERYMEN" LATEST EDITION.
- ALL PLANT MATERIAL SHALL BE FREE FROM INSECTS AND DISEASE.
- ALL PLANTING SHALL BE DONE IN ACCORDANCE WITH ACCEPTABLE HORTICULTURAL PRACTICES. THIS IS TO INCLUDE PROPER PLANTING MIX, PLANT BED AND TREE PIT PREPARATION, PRUNING, STAKING OR GUYING, WRAPPING, SPRAYING, FERTILIZATION, PLANTING AND ADEQUATE MAINTENANCE UNTIL ACCEPTANCE FROM THE OWNER.
- ALL GRASS, OTHER VEGETATION AND DEBRIS SHALL BE REMOVED FROM ALL PLANTING AREAS PRIOR TO PLANTING.
- EXISTING TREES TO BE PRESERVED SHALL BE PROTECTED DURING CONSTRUCTION AND SHALL BE THE RESPONSIBILITY OF THE GENERAL CONTRACTOR.
- ALL SHRUB BEDS AND TREE PITS SHALL BE MULCHED WITH 3" CLEAN SHREDDED BLACK MULCH (DO NOT EXCEED 3" DEPTH).
- ANY DEVIATION FROM THE LANDSCAPE PLAN, INCLUDING PLANT LOCATION, SELECTION, SIZE, QUANTITY, OR CONDITION SHALL BE REVIEWED AND APPROVED BY THE OWNER AND LANDSCAPE ARCHITECT (AND MUNICIPAL AUTHORITY, IF APPLICABLE) PRIOR TO INSTALLATION ON SITE.
- WHERE INDICATED ON PLAN, PLANTING SOIL MIXTURE FOR GROUND COVER AND PERENNIAL BED AREAS SHALL CONSIST OF FOUR PARTS TOPSOIL, TWO PARTS SPHAGNUM PEAT MOSS, AND ONE PART HORTICULTURAL PERLITE BY VOLUME. PEAT MOSS MAY BE SUBSTITUTED WITH WELL-ROTTED OR DEHYDRATED MANURE OR COMPOST. ROTOTILL BEDS TO A DEPTH OF 8 INCHES.
- DAMAGE TO EXISTING SITE IMPROVEMENTS DURING INSTALLATION OF LANDSCAPE MATERIAL SHALL BE THE RESPONSIBILITY OF THE LANDSCAPE CONTRACTOR.

NOTES:
 DIG HOLE AT LEAST 2 TIMES THE WIDTH OF ROOT BALL AND AS DEEP AS THE ROOT BALL (NO DEEPER). SET ROOT BALL CENTERED WITH TOP AT GROUND LEVEL OR SLIGHTLY HIGHER. CORRECT HOLE DEPTH AS NEEDED.
 FOR DECIDUOUS AND NEEDLED EVERGREEN TREES AND SHRUBS 1 FULL WHEELBARROW EXISTING SOIL, 2 SHOVELS PEAT, 1 SHOVEL WELL ROTTED MANURE, OR OTHER COMPOSTED ORGANIC MATERIAL. FOR BROADLEAVED EVERGREENS AND RELATED ERICACEAE PLANTS, 1 FULL WHEELBARROW EXISTING SOIL, 3-4 SHOVELS PEAT, 1 SHOVEL WELL ROTTED MANURE, OR OTHER COMPOSTED ORGANIC MATERIAL OF LOW pH (RECOMMENDATIONS ARE FOR ACCEPTABLE PLANTING AREAS).
 CONTAINER GROWN STOCK: REMOVE CONTAINER PROTECTING ROOT BALL. GENTLY COMB OUT ROOTS, PRUNE DAMAGED ROOTS.
 BACKFILL 2/3 OF HOLE WITH AMENDED SOIL THEN FILL HOLE WITH WATER, LET DRAIN, REPEAT WATER AND DRAIN. BACK FILL TO FINISH GRADE, TAMP GENTLY, AND CREATE EARTH SAUCER. WATER THOROUGHLY ONCE AGAIN TO REMOVE REMAINING AIR POCKETS.
 2" x 2" OR 2 1/2" DIAMETER STAKES WITH 2 #12 GAUGE WIRES ENCASED IN 2-PLY REINFORCED RUBBER HOSE 1/2" DIAMETER OR CHAINLOCK AS APPROVED BY LANDSCAPE ARCHITECT. 2 STAKES LOCATED 180° APART (STAKES SHALL BE FIRMLY SET TO PROVIDE NECESSARY TENSION).



LEGEND

	EXISTING	PROPOSED
PROPERTY LINE	[Symbol]	[Symbol]
GRANITE MONUMENT	[Symbol]	[Symbol]
CATCHBASIN	[Symbol]	[Symbol]
MANHOLE	[Symbol]	[Symbol]
HYDRANT	[Symbol]	[Symbol]
UTILITY POLE	[Symbol]	[Symbol]
WATER VALVE	[Symbol]	[Symbol]
TELEPHONE	[Symbol]	[Symbol]
OVERHEAD WIRES	[Symbol]	[Symbol]
CMP CABLE LINES	[Symbol]	[Symbol]
CLEAN OUT	[Symbol]	[Symbol]
CURB	[Symbol]	[Symbol]
FENCE	[Symbol]	[Symbol]
SIGN	[Symbol]	[Symbol]
DECIDUOUS TREE	[Symbol]	[Symbol]
EVERGREEN TREE	[Symbol]	[Symbol]
WALL MOUNTED LIGHT	[Symbol]	[Symbol]

Prepared For:
 Owner:
 Home For The Aged
 777 Stevens Avenue
 Portland, Maine 04103
 Tel.: 207-797-7710
 Applicant:
 The Park Danforth
 777 Stevens Avenue
 Portland, Maine 04103
 Tel.: 207-797-7710
 Prepared By:
MITCHELL & ASSOCIATES
 Landscape Architects
 The Staples School
 70 Center Street
 Portland, Maine 04101
 Tel.: 207-797-4427

The Park Danforth
 777 Stevens Avenue
 Portland, Maine

Date: OCTOBER 17, 2014

Issued For: PERMITTING

Revisions:
 NOV. 25, 2014: Per City of Portland Staff Review Comments
 JAN. 5, 2015: Per City of Portland Staff Review Comments
 APR. 10, 2015: Amended Site Plan and Subdivision Plan
 JUNE 17, 2015: For Pricing

Reproduction or reuse of this document without the expressed written consent of Mitchell & Associates is prohibited. © 2015

Title: **PLANTING PLAN**

Scale: 1"=30'
 0 10 20 30 60 ft.

North: [Symbol]
 Sheet No.: **L5.0**

