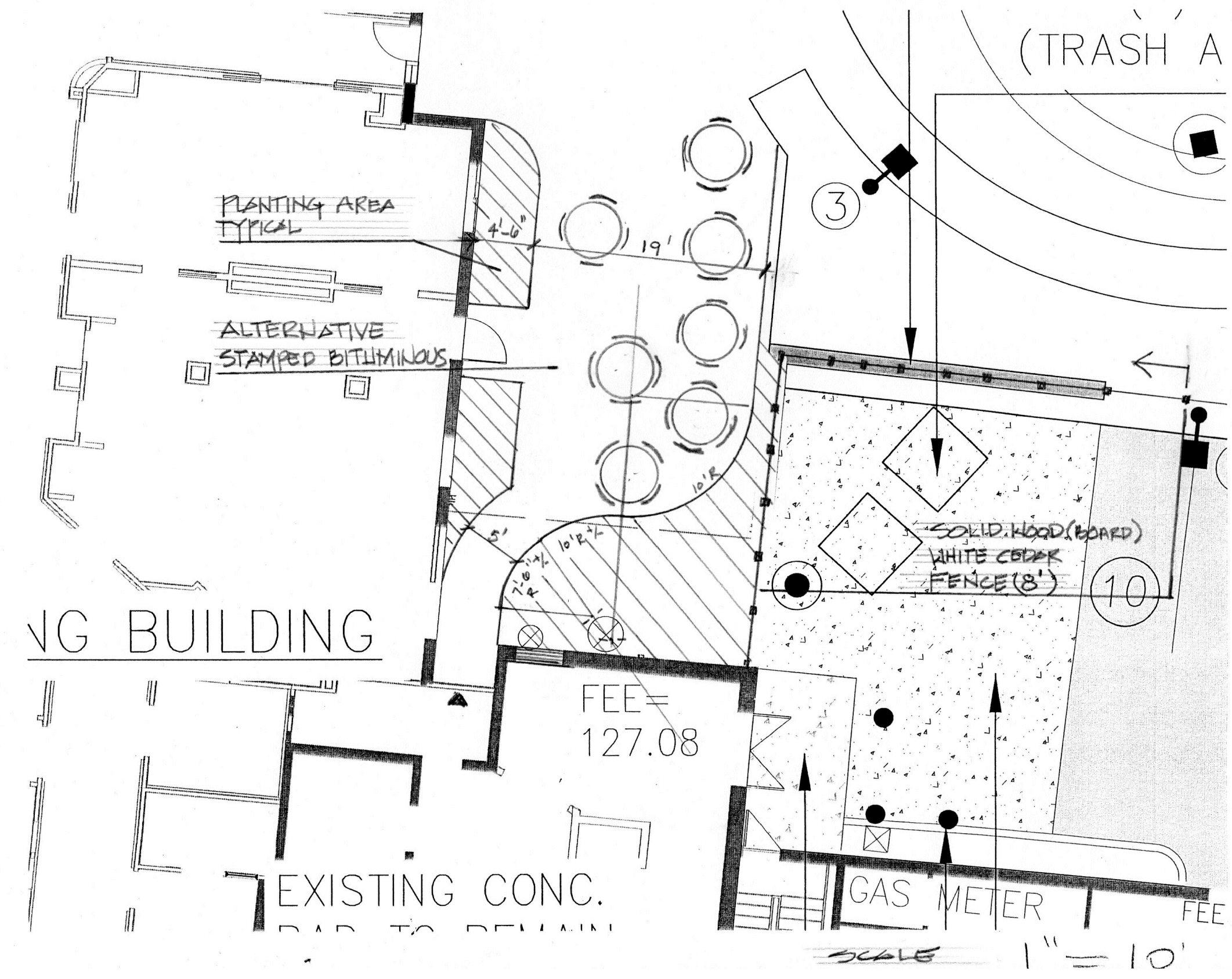
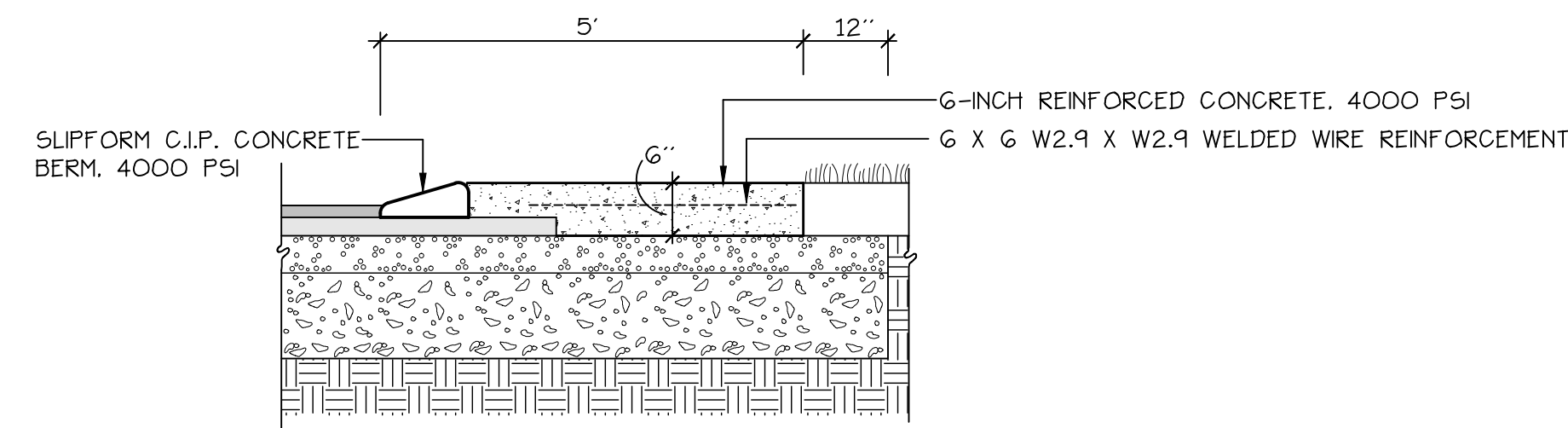


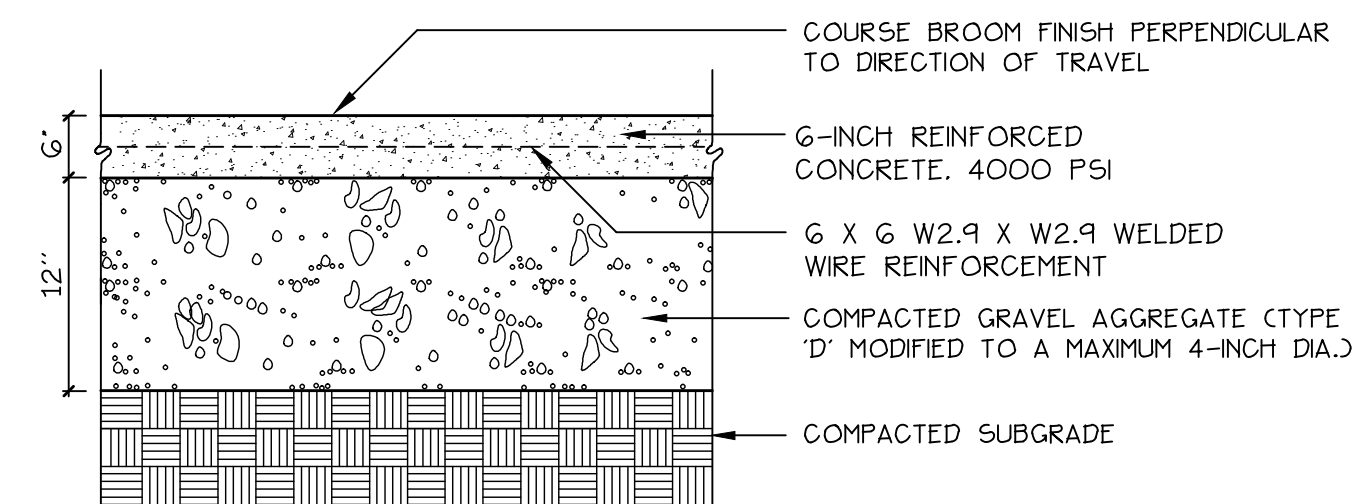
1 FOREST AVENUE ENTRANCE TRAFFIC ISLAND
NOT TO SCALE



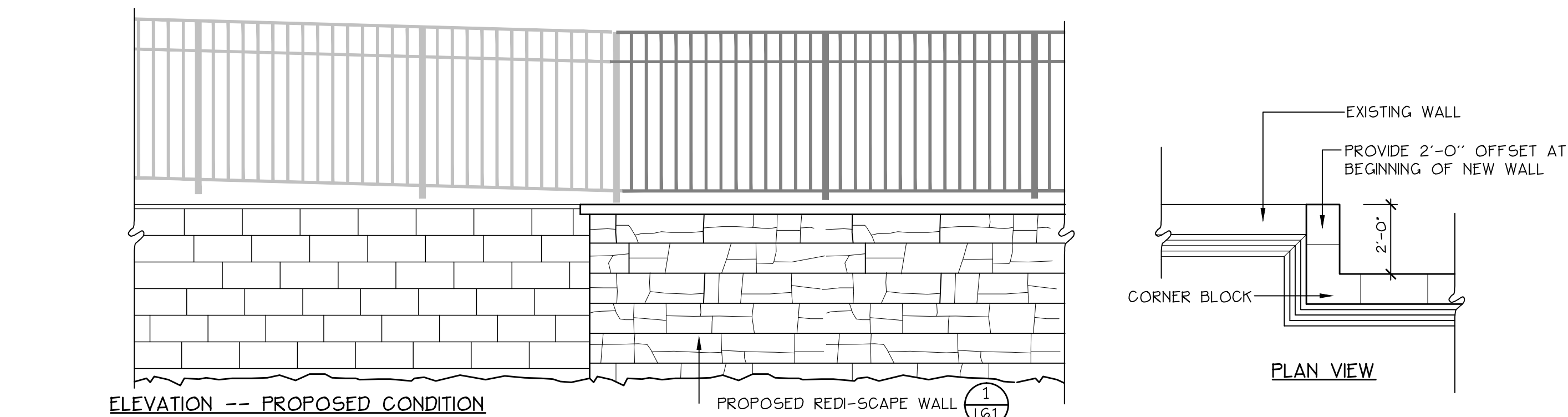
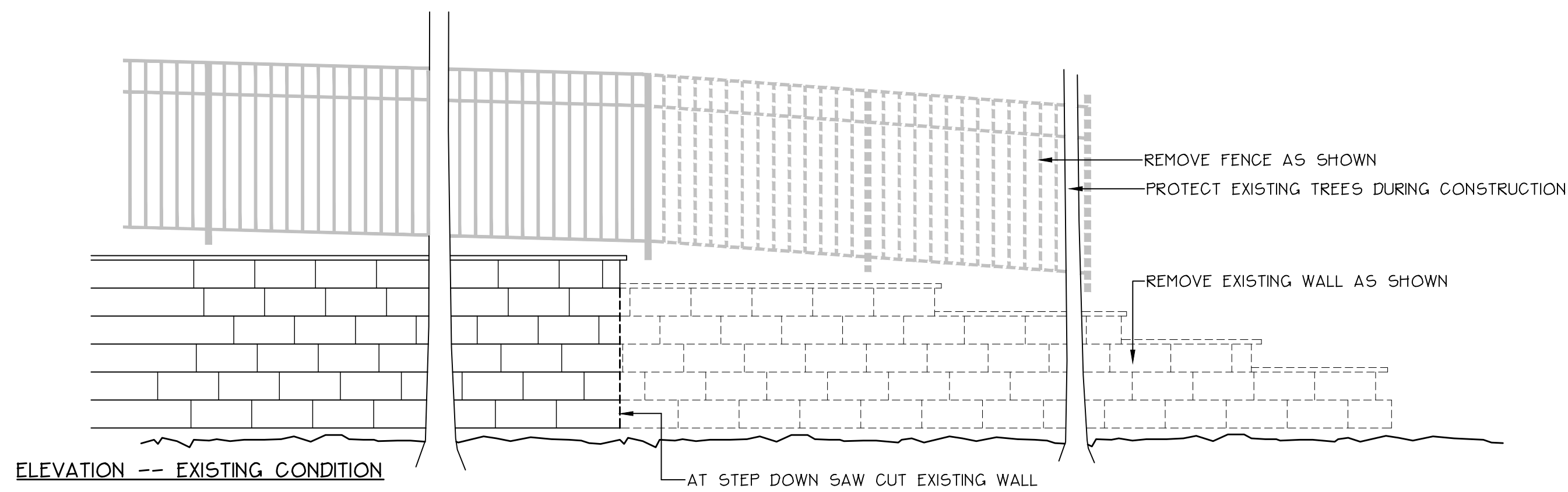
4 ADD ALTERNATE NO. 4: PATIO IMPROVEMENTS
NOT TO SCALE



2 STEVENS AVENUE ENTRANCE: MOUNTABLE CONCRETE EDGE
NOT TO SCALE



5 CONCRETE PAD (DUMPSTER AND GENERATOR)
NOT TO SCALE



3 STEVENS AVENUE ENTRANCE: MOUNTABLE CONCRETE EDGE
NOT TO SCALE

Prepared For:
Owner:
Home For The Aged
777 Stevens Avenue
Portland, Maine 04103
Tel.: 207-797-7710
Applicant:
The Park Danforth
777 Stevens Avenue
Portland, Maine 04103
Tel.: 207-797-7710
Prepared By:
MITCHELL & ASSOCIATES
Landscape Architects
The Staples School
70 Center Street
Portland, Maine 04101
Tel.: 207-774-4427

The Park Danforth
Portland, Maine
777 Stevens Avenue

Date:
OCTOBER 17, 2014

Issued For:
PERMITTING

Revisions:
NOV. 25, 2014: Per City of Portland Staff Review Comments
JAN. 5, 2015: Per City of Portland Staff Review Comments
MAR. 25, 2015: Site Pricing Set

Reproduction or reuse of this document without the expressed written consent of Mitchell & Associates is prohibited.
© 2015

Title:
SITE DETAILS

Scale: AS SHOWN

North: Sheet No.:

L6.4

