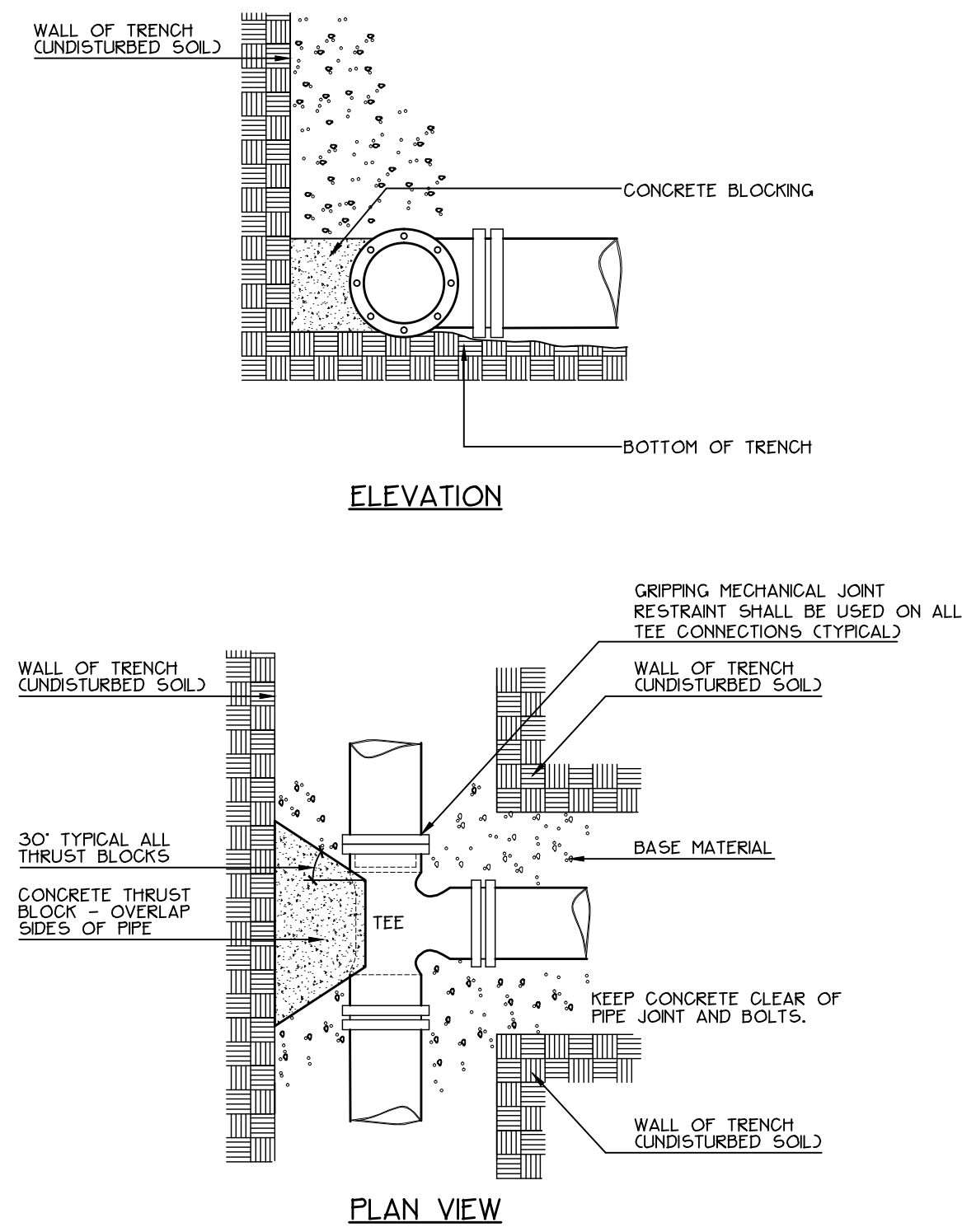


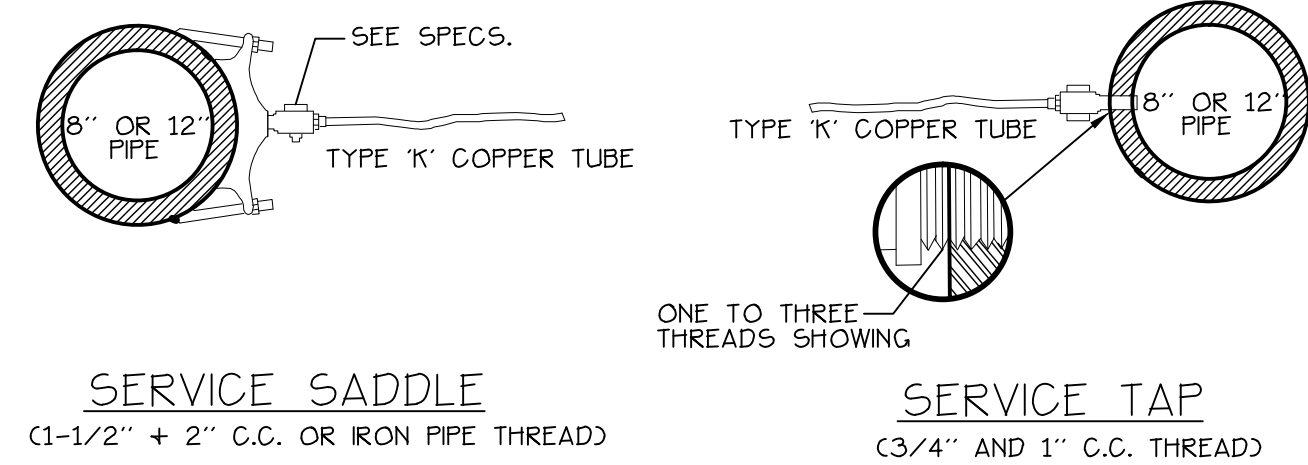
1 PORTLAND WATER DISTRICT PIPE TRENCH DETAIL
NOT TO SCALE



1. INSTALL POLY BARRIER BETWEEN PIPE AND ALL THRUST BLOCKS.
2. ANY MODIFICATION TO THRUST BLOCK SIZING OR PIPE RESTRAINT REVISIONS SHALL BE APPROVED IN WRITING BY THE LANDSCAPE ARCHITECT PRIOR TO IMPLEMENTATION IN THE FIELD.
3. ANY WORK RELATING TO WATER PIPING OF DETAILS SHALL BE IN ACCORDANCE WITH THE PORTLAND WATER DISTRICT SPECIFICATIONS.

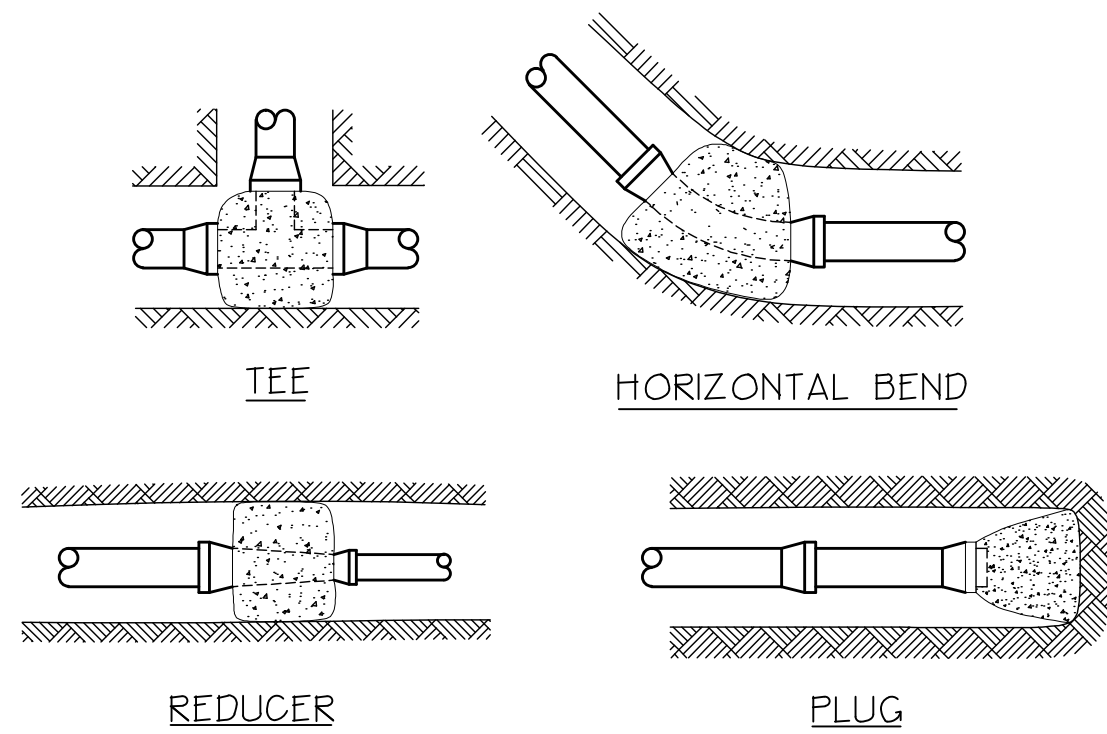
BEARING SURFACE REQUIRED IN SQUARE FEET					
PIPE SIZE	1/32 BEND	1/16 BEND	1/8 BEND	1/4 BEND	TEES/CAPS
6"	1.0	1.5	2.5	4.5	3.5
8"	1.5	2.5	4.5	8.0	5.5

5 STANDARD TEE BLOCKING
NOT TO SCALE



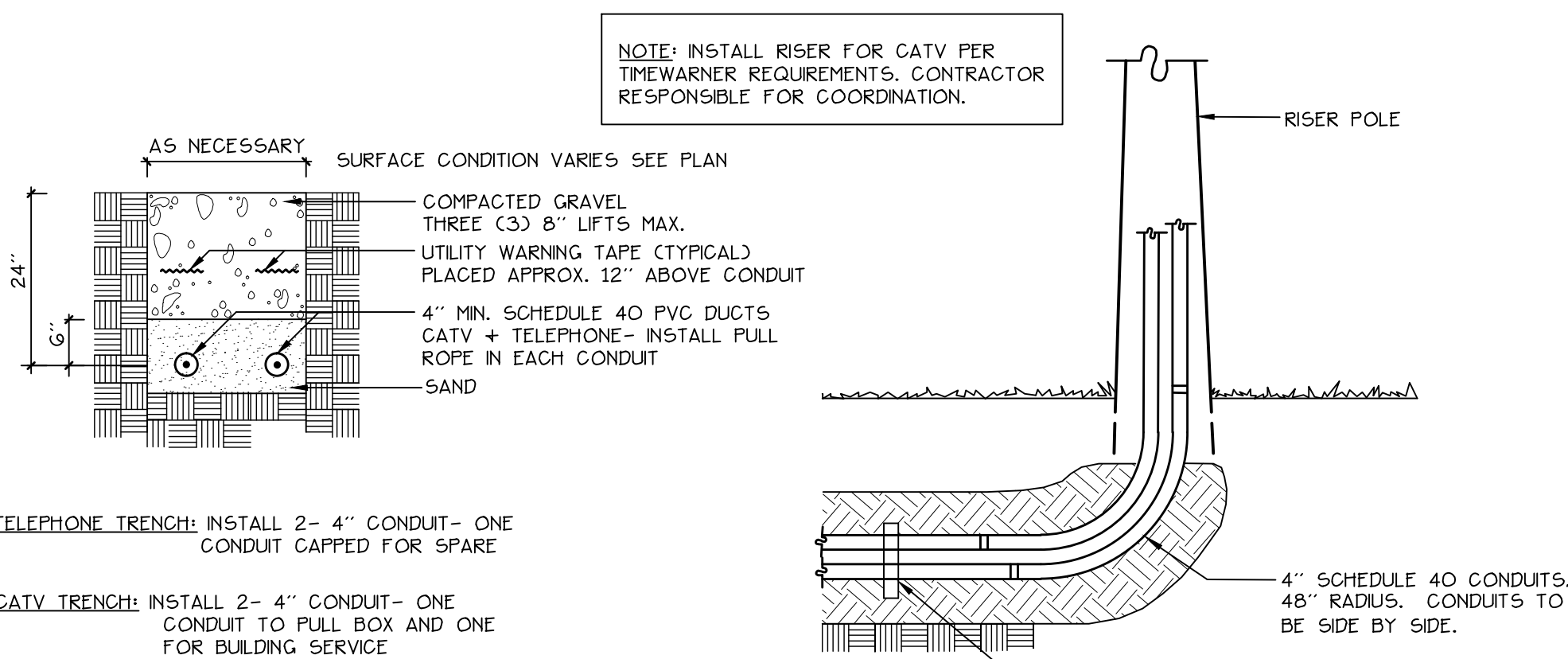
NOTE: SERVICE CONNECTIONS (DIRECT TAPS AND SERVICE CLAMPS) WILL BE INSTALLED SO THAT THE OUTLET IS AT AN ANGLE OF NOT MORE THAN 45° ABOVE THE HORIZONTAL. ALWAYS PUT A BEND OR 'GOOSENECK' IN THE SERVICE LINE PRIOR TO CONNECTING TO PROVIDE FLEXIBILITY AND 'GIVE' TO COUNTERACT THE EFFECTS OF A LOAD DUE TO SETTLEMENT OR EXPANSION AND/OR CONTRACTION (SEE DETAILS).

2 WATER MAIN SERVICE CONNECTIONS
NOT TO SCALE

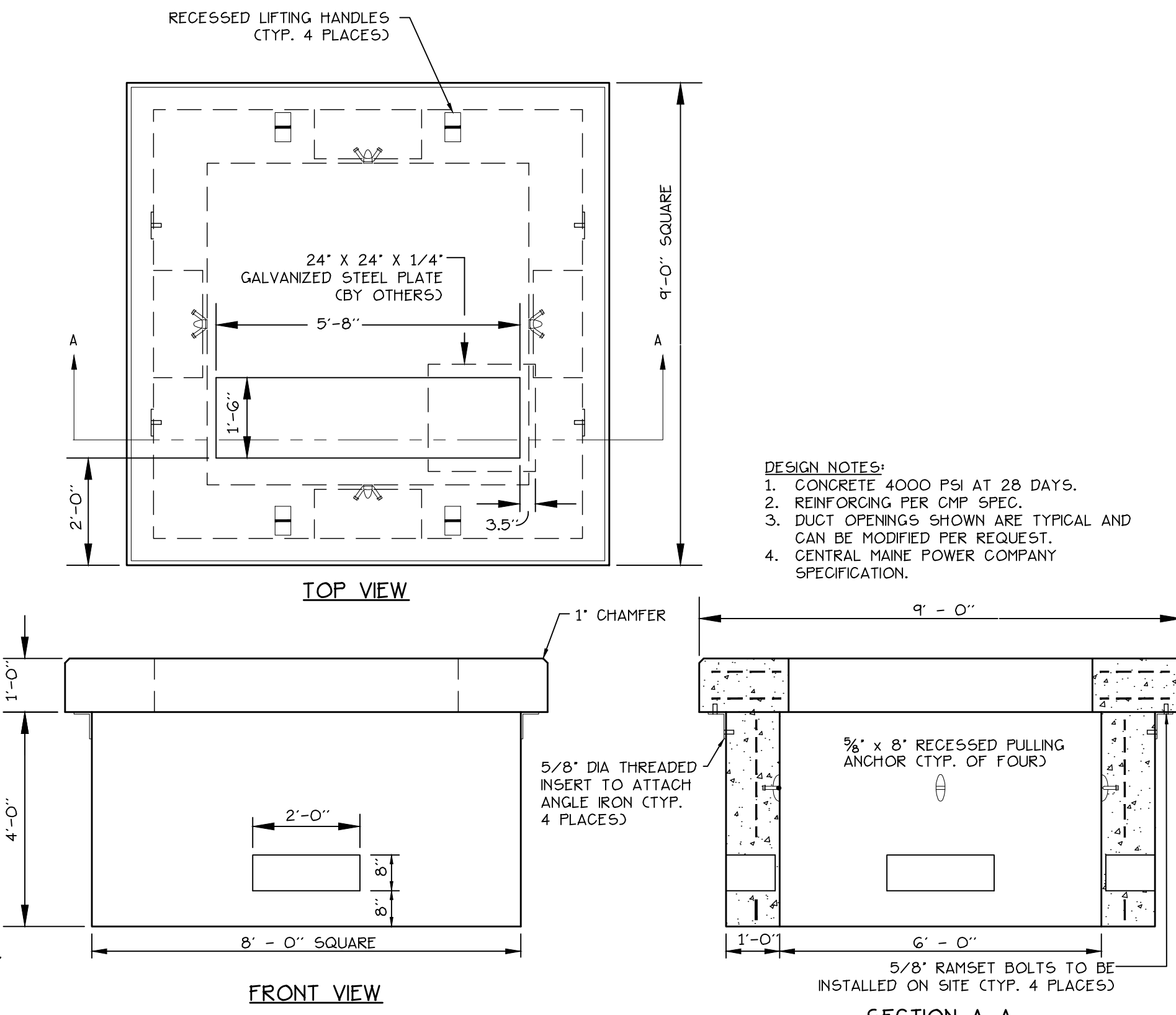


ANCHOR ALL 1/16, 1/8 + 1/4 BENDS. ANCHOR ALL TEES W/ BRANCH LARGER THAN 6". PLACE CONCRETE AGAINST UNDISTURBED EARTH OR COMPACTED FILL.

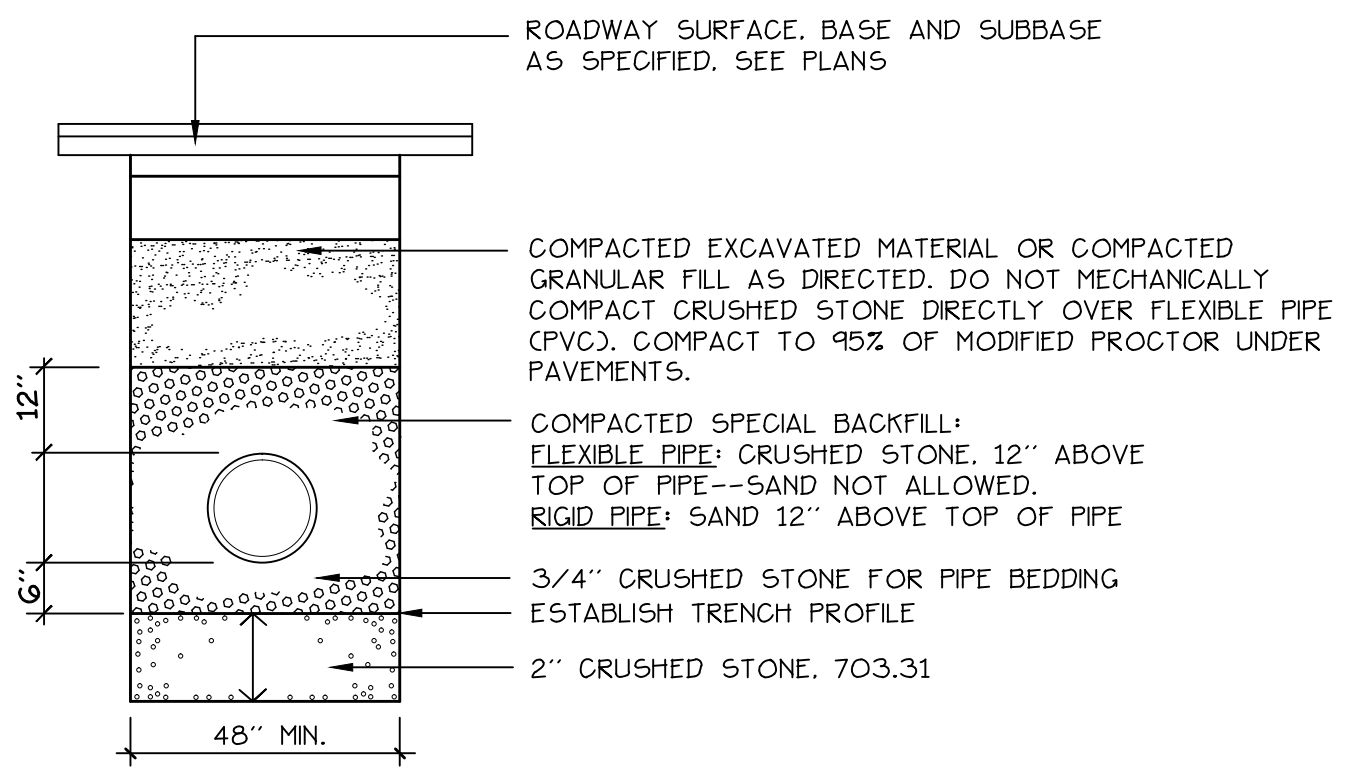
3 WATER MAIN ANCORAGE DETAILS
NOT TO SCALE



4 TELEPHONE / CABLE T.V.
NOT TO SCALE

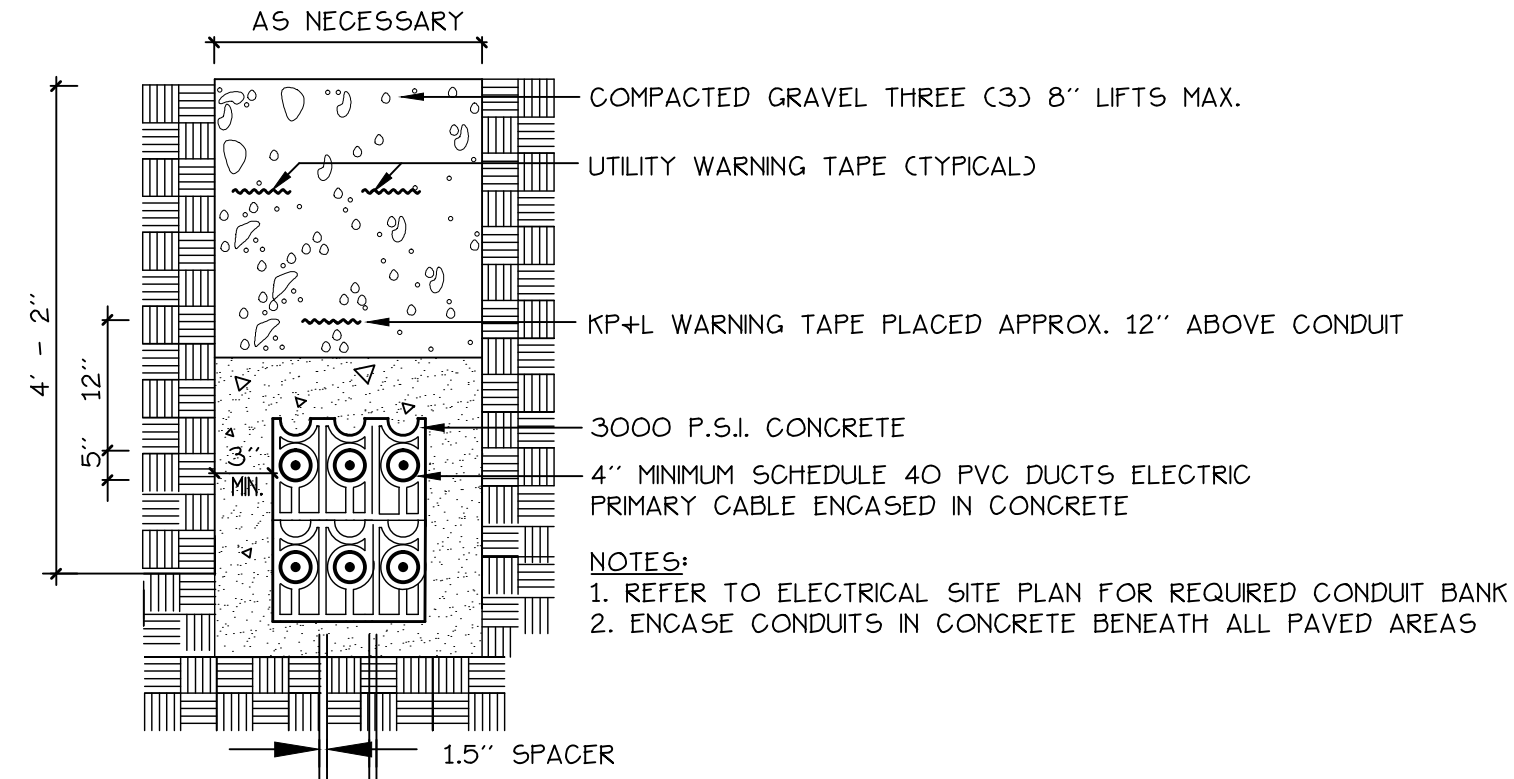


6 9' X 9' THREE PHASE TRANSFORMER PAD (750 - 2000 KVA)
NOT TO SCALE



- NOTES:
1. ANY ALTERNATE TRENCHING METHODS SHALL BE APPROVED IN ADVANCE BY THE CITY.
 2. ALL TRENCH DIMENSIONS SHALL BE IN CONFORMANCE WITH THE CITY OF PORTLAND'S DETAIL FIGURE I-12 OF THE TECHNICAL AND DESIGN STANDARDS AND GUIDELINES.

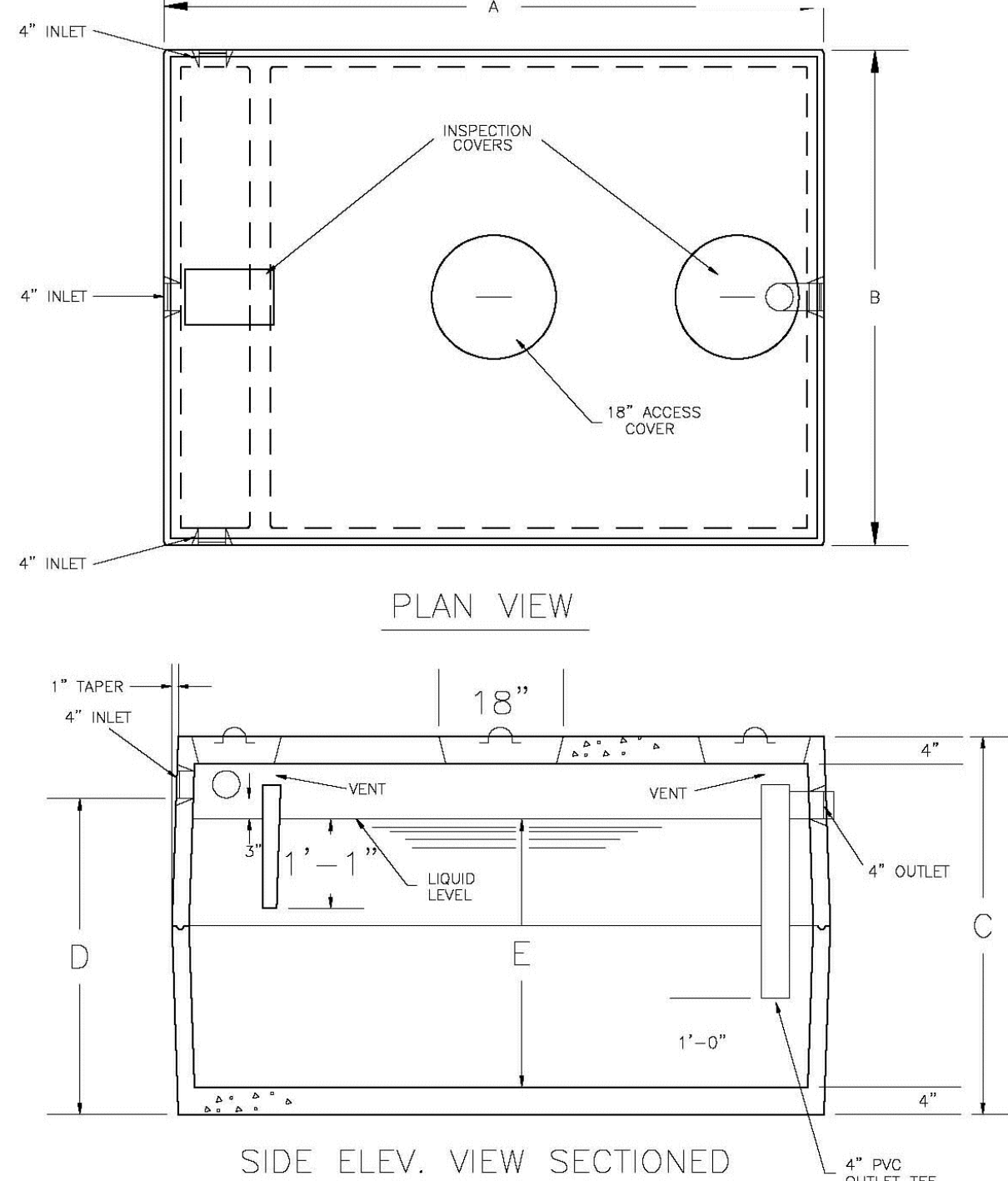
7 PIPE TRENCH DETAIL
NOT TO SCALE



8 ELECTRIC TRENCH
NOT TO SCALE

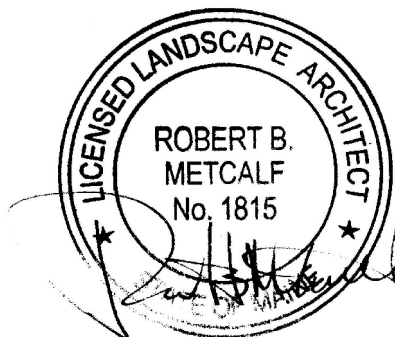
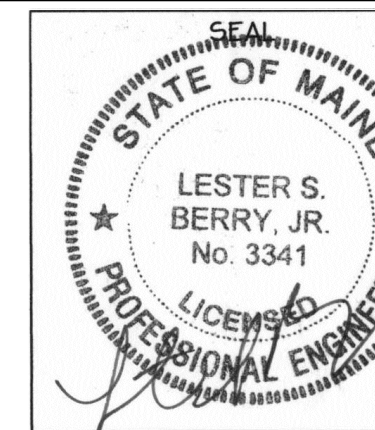
ITEM NO.		GALLON CAPACITY					APPROX. WEIGHT		DESIGN DATA & GENERAL NOTES	
STD.	H.D.	A	B	C	D	E				
GT 2000	GT 2000-HD	10'-6"	6'-4"	6'-2"	5'-3"	4'-8"	12,140	12,140	1) CONCRETE: 4,000 PSI @ 28 DAYS. CEMENT: PORTLAND TYPE I OR III PER ASTM C150.	
									2) REINFORCING: FIBERS.	
									3) DESIGN LOADING: H-10	
									4) CONSTRUCTION JOINT: SEALED W/ ASPHALT	
									5) HEAVY-DUTY TANK TOPS REINFORCED W/ 5/8" ROD @ 12" O.C. EACH WAY.	

NOTE: FOR HEAVY DUTY (HD) TANKS, ADD 6" TO DIMENSIONS IN COLUMN C AND 3" TO THOSE IN COLUMN-D



9 REPLACEMENT 2000 GALLON GREASE TRAP
NOT TO SCALE

NOT TO SCALE



Prepared For:
Owner:
Home For The Aged
777 Stevens Avenue
Portland, Maine 04103
Tel.: 207-797-7710

Applicant:
The Park Danforth
777 Stevens Avenue
Portland, Maine 04103
Tel.: 207-797-7710

Prepared By:
MITCHELL & ASSOCIATES
Landscape Architects
The Staples School
70 Center Street
Portland, Maine 04101
Tel.: 207-774-4427

The Park Danforth
Portland, Maine
777 Stevens Avenue

Date:
OCTOBER 17, 2014

Issued For:
PERMITTING

Revisions:
NOV. 25, 2014: Per City of Portland Staff Review Comments
JAN. 5, 2015: Per City of Portland Staff Review Comments
MAR. 25, 2015: Site Pricing Set

Reproduction or reuse of this document without the expressed written consent of Mitchell & Associates is prohibited.
© 2015

Title:
SITE DETAILS

Scale: AS SHOWN

North: Sheet No.:

L6.3